

NHS Data Model and Dictionary



Type:	Data Dictionary Change Notice
Reference:	1699
Version No:	1.0
Subject:	Retirement of KC53: Adult Screening Programmes - Cervical Screening
Effective Date:	Immediate
Reason for Change:	Retirement of out of date content
Publication Date:	5 April 2019

Background:

As part of the ongoing work to implement a new version of the NHS Data Model and Dictionary, a review of legacy and out of date data sets contained within the NHS Data Model and Dictionary has been carried out.

A number of data sets are out of date and have been identified for retirement from the NHS Data Model and Dictionary. Note that the relevant Data Set Change Notices (DSCNs) have been reviewed and withdrawn where appropriate.

This Data Dictionary Change Notice (DDCN) retires the Central Return Form KC53: Adult Screening Programmes - Cervical Screening and supporting definitions from the NHS Data Model and Dictionary.

To view a demonstration on "How to Read an NHS Data Model and Dictionary Change Request", visit the NHS Data Model and Dictionary help pages at: https://www.datadictionary.nhs.uk/Flash_Files/changerequest.htm.

Note: if the web page does not open, please copy the link and paste into the web browser.

Summary of changes:

Diagrams

[SERVICE REQUEST DIAGRAM](#)

Changed Diagram

Supporting Information

[COMMUNITY](#)

Changed Description

[KC53 1 \(RETIRED\)](#) renamed from [KC53 1](#)

Changed Name, status to Retired, Description

<u>KC53 10 (RETIRED)</u> renamed from <u>KC53 10</u>	Changed Name, status to Retired, Description
<u>KC53 2 (RETIRED)</u> renamed from <u>KC53 2</u>	Changed Name, status to Retired, Description
<u>KC53 3 (RETIRED)</u> renamed from <u>KC53 3</u>	Changed Name, status to Retired, Description
<u>KC53 4 (RETIRED)</u> renamed from <u>KC53 4</u>	Changed Name, status to Retired, Description
<u>KC53 5 (RETIRED)</u> renamed from <u>KC53 5</u>	Changed Name, status to Retired, Description
<u>KC53 6 (RETIRED)</u> renamed from <u>KC53 6</u>	Changed Name, status to Retired, Description
<u>KC53 7 (RETIRED)</u> renamed from <u>KC53 7</u>	Changed Name, status to Retired, Description
<u>KC53 8 (RETIRED)</u> renamed from <u>KC53 8</u>	Changed Name, status to Retired, Description
<u>KC53 9 (RETIRED)</u> renamed from <u>KC53 9</u>	Changed Name, status to Retired, Description
<u>SCREENING RESULT SENT DATE (RETIRED)</u> renamed from <u>SCREENING RESULT SENT DATE</u>	Changed Name, status to Retired, Description
<u>SCREENING TEST INVITATION (RETIRED)</u> renamed from <u>SCREENING TEST INVITATION</u>	Changed Name, status to Retired, Description

Class Definitions

<u>APPOINTMENT OFFER</u>	Changed Attributes, Description
<u>HEALTH PROGRAMME</u>	Changed Attributes
<u>PERSON IN PROGRAMME</u>	Changed Attributes

Attribute Definitions

<u>ACTIVITY DATE TYPE</u>	Changed Description
<u>CERVICAL SCREENING RECALL INTERVAL (RETIRED)</u> renamed from <u>CERVICAL SCREENING RECALL INTERVAL</u>	Changed Name, status to Retired, Description
<u>CYTOLOGY SCREENING ACTION TYPE (RETIRED)</u> renamed from <u>CYTOLOGY SCREENING ACTION TYPE</u>	Changed Name, status to Retired, Description
<u>INVITATION TYPE (RETIRED)</u> renamed from <u>INVITATION TYPE</u>	Changed Name, status to Retired, Description
<u>OPPORTUNISTIC SCREENING TYPE (RETIRED)</u> renamed from <u>OPPORTUNISTIC SCREENING TYPE</u>	Changed Name, status to Retired, Description
<u>RESULT SENT DIRECT (RETIRED)</u> renamed from <u>RESULT SENT DIRECT</u>	Changed Name, status to Retired, Description

[SCREENING STATUS \(RETIRED\)](#) renamed
from [SCREENING STATUS](#)

Changed Name, status to
Retired, Description

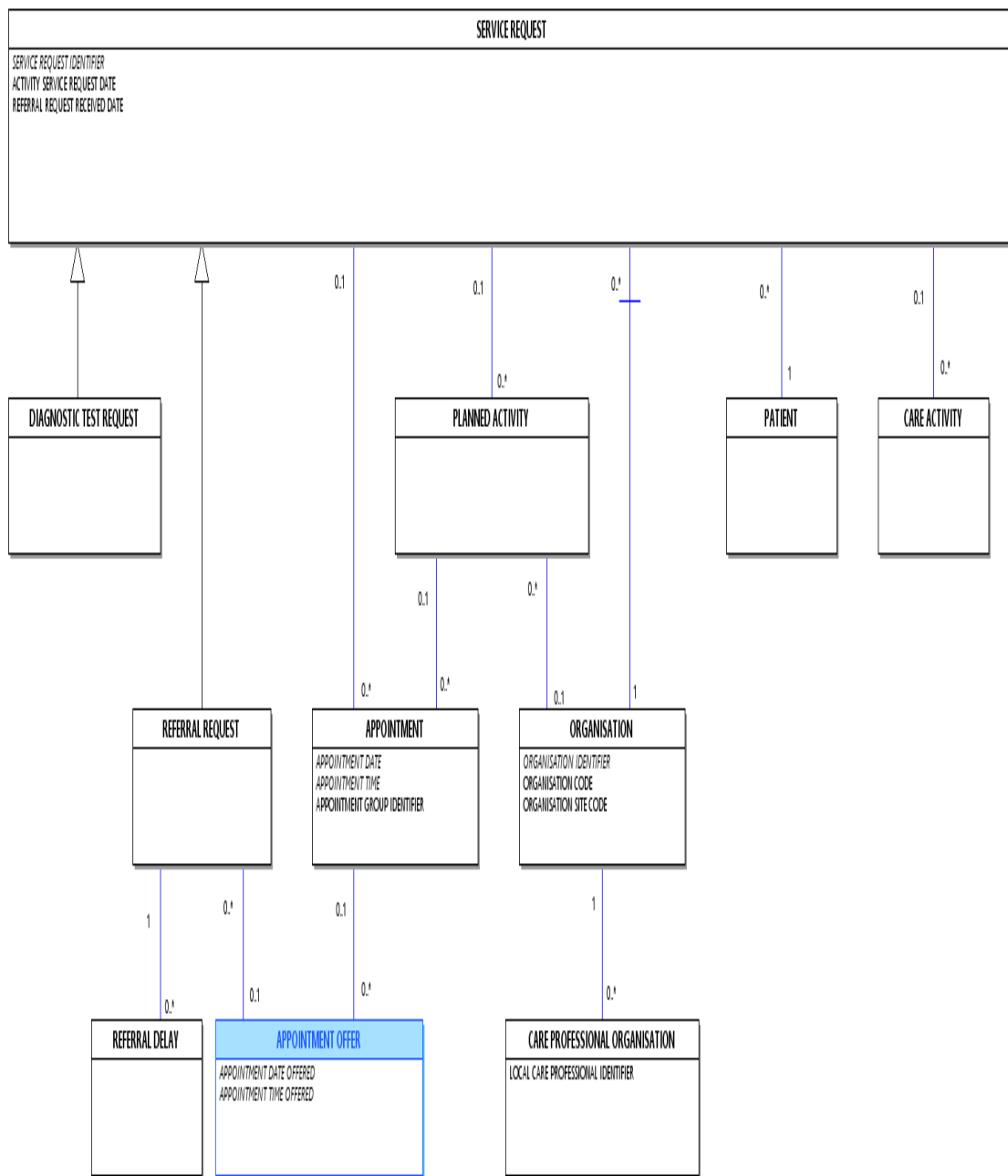
Date: 5 April 2019

Sponsor: Nicholas Oughtibridge, Head of Business and Operational Delivery, NHS Digital

Note: New text is shown with a blue background. Deleted text is crossed out. Retired text is shown in grey. Within the Diagrams deleted classes and relationships are red, changed items are blue and new items are green.

SERVICE REQUEST DIAGRAM

Change to Diagram: Changed Diagram



COMMUNITY

Change to Supporting Information: Changed Description

[KC53](#)

[Adult Screening Programmes – Cervical Screening](#)

[KC65](#)

[Colposcopy Clinics: Referrals, Treatments and Outcomes](#)

KC53 1 (RETIRED)_ renamed from KC53 1

Change to Supporting Information: Changed Name, status to Retired, Description

This item has been retired from the NHS Data Model and Dictionary.

The last live version of this item is available in the March 2019 release of the NHS Data Model and Dictionary.

Access to this version can be obtained by emailing information.standards@nhs.net with "NHS Data Model and Dictionary - Archive Request" in the email subject line.

KC53 1 (RETIRED)_ renamed from KC53 1

Change to Supporting Information: Changed Name, status to Retired, Description

Central Return Form Guidance

[KC53: Adult Screening Programmes: Cervical Screening](#)

~~This return is in development by the NHS Cancer Screening Programme, therefore the information should not be used.~~

~~For further information on National Cervical Screening, please see the [NHS Digital website](#).~~

Contextual Overview

- ~~The [Department of Health and Social Care](#), NHS Cervical Screening Programme (NHSCSP) and [Strategic Health Authorities](#) require information from [Primary Care Trusts](#) on Cervical Screening.~~
- ~~The information helps to monitor the process of achieving the Government's target to reduce the incidence of invasive cervical cancer and to ensure that the screening programme is managed effectively. It is used to monitor coverage by the cervical screening programme of the eligible [Primary Care Trust](#) responsible population.~~
- ~~Information on the return is also used in Public Expenditure Survey (PES) negotiations, resource allocation to the NHS and Departmental accountability.~~
- ~~Information based on the KC53 return is published annually by the Department in the Statistical Bulletin '*Cervical Screening Programme*'.~~

Completing Return KC53: Cervical Screening Programme

- ~~The Cervical [Screening Programme](#) is a programme to deliver services within a 'structured framework' to a defined target population, planned by a [Primary Care](#)~~

~~[Trust](#). The services provided to the population under this programme may be carried out by one or more [Health Care Providers](#) - [NHS Trust](#), general medical practitioner (GMP), private or voluntary organisation or any combination of these.~~

- ~~Information on Cervical Screening should be readily available from the call and recall service's computerised call and recall system.~~
- ~~The return requires the [ORGANISATION_CODE](#) and [ORGANISATION_NAME](#) of the [Primary Care Trust](#). It requires information about women ([PERSONS](#)) on the lists of GPs in the [Primary Care Trust](#) and women from the unregistered population who live in the geographical area for which the [Primary Care Trust](#) is responsible at 31 March. It is completed annually and submitted within two months of this date.~~

~~KC53 1 (RETIRED)_ renamed from KC53 1~~

~~Change to Supporting Information: Changed Name, status to Retired, Description~~

- ~~Changed Name from Data_Dictionary.Messages.Central_Return_Forms.Community.KC53.kc53_1 to Retired.Data_Dictionary.Messages.Central_Return_Forms.Community.KC53.kc53_1~~
- ~~Retired kc53 1~~
- ~~Changed Description~~

~~KC53 10 (RETIRED)_ renamed from KC53 10~~

~~Change to Supporting Information: Changed Name, status to Retired, Description~~

This item has been retired from the NHS Data Model and Dictionary.

The last live version of this item is available in the March 2019 release of the NHS Data Model and Dictionary.

Access to this version can be obtained by emailing information.standards@nhs.net with "NHS Data Model and Dictionary - Archive Request" in the email subject line.

~~KC53 10 (RETIRED)_ renamed from KC53 10~~

~~Change to Supporting Information: Changed Name, status to Retired, Description~~

Central Return Form Guidance

KC53: Adult Screening Programmes: Cervical Screening

~~This return is in development by the NHS Cancer Screening Programme, therefore the information should not be used.~~

~~For further information on National Cervical Screening, please see the [NHS Digital website](#).~~

~~Part F: Cervical Screening Programme – Test Recall/Status of women following most severe screening result in the year~~

- ~~• This part of the return collects information about the action taken following a woman's most severe test result in a year.~~
- ~~• The women included are those who have had a [Screening Test](#) and are aged 20 to 64. The age is derived from the [PERSON BIRTH DATE](#).~~
- ~~• The data are based on the results of the woman's most severe test in the year and relate to [Screening Tests](#) with a [SCREENING TEST DATE](#) between 1 April – 31 March. Classifications are those of [CYTOLOGY RESULT TYPE](#) of a [Request for Pathology Investigation](#) and are in accordance with the categories shown in box 22 of HMR 101/5 Request/Report for Cervical or Vaginal Cytology.~~

~~A [Request for Pathology Investigation](#) is a [DIAGNOSTIC TEST REQUEST](#) where the [DIAGNOSTIC TEST REQUEST TYPE](#) is National Code 'Request for Pathology Investigation.'~~

~~Woman's most severe test result in the year~~

- ~~• This is classified by the following [CYTOLOGY RESULT TYPES](#):~~
 - ~~**Inadequate** (cat. 1)~~
 - ~~**Negative** (cat. 2)~~
 - ~~**Mild dyskaryosis** (cat. 3)~~
 - ~~**Severe dyskaryosis** (cat. 4)~~
 - ~~**Severe dyskaryosis/?invasive carcinoma** (cat. 5)~~
 - ~~**?Glandular neoplasia** (cat. 6)~~
 - ~~**Moderate dyskaryosis** (cat. 7)~~
 - ~~**Borderline changes** (cat. 8)~~
- ~~• The return requires a count of the [CYTOLOGY SCREENING ACTION TYPE](#) against each [CYTOLOGY RESULT TYPE](#). The actions are classified into:~~
 - ~~**Normal (A)** - *Standard Primary Care Trust recall interval (Normal) (A)*~~
 - ~~**Suspend (S)** - *Refer for medical assessment or under medical treatment (Suspend) (S)*~~
 - ~~**Repeat (R)** - *Repeat at interval specified (R)*~~

- The actions are based on result codes 1 to 8 from HMR 101/5, the operational document used by most [Laboratories](#) for coding the results of cervical smears.

KC53 10 (RETIRED) renamed from KC53 10

Change to Supporting Information: Changed Name, status to Retired, Description

- Changed Name from Data_Dictionary.Messages.Central_Return_Forms.Community.KC53.kc53_10 to Retired.Data_Dictionary.Messages.Central_Return_Forms.Community.KC53.kc53_10
- Retired kc53 10
- Changed Description

KC53 2 (RETIRED) renamed from KC53 2

Change to Supporting Information: Changed Name, status to Retired, Description

This item has been retired from the NHS Data Model and Dictionary.

The last live version of this item is available in the March 2019 release of the NHS Data Model and Dictionary.

Access to this version can be obtained by emailing information.standards@nhs.net with "NHS Data Model and Dictionary - Archive Request" in the email subject line.

KC53 2 (RETIRED) renamed from KC53 2

Change to Supporting Information: Changed Name, status to Retired, Description

Central Return Form Guidance

[KC53: Adult Screening Programmes: Cervical Screening](#)

~~This return is in development by the NHS Cancer Screening Programme, therefore the information should not be used.~~

~~For further information on National Cervical Screening, please see the [NHS Digital website](#).~~

~~Part A: Cervical Screening Programme – Status of PCT Responsible Population~~

~~Part A1~~

- ~~Part A1 of KC53 requires information on the routine recall interval in force in the [Primary Care Trust](#) for the [Screening Programme](#). This is the [CERVICAL SCREENING RECALL INTERVAL](#).~~

~~A [Screening Programme](#) is a [HEALTH PROGRAMME](#) where the [HEALTH PROGRAMME TYPE](#) is National Code 'Screening Programme'.~~

Part A2

- Part A2 of KC53 requires information on the SCREENING STATUS of the Screening Population – the number of women in Primary Care Trusts responsible population at 31 March.

Screening Population is a HEALTH PROGRAMME POPULATION where the HEALTH PROGRAMME TYPE 06 'Screening Programme'.

~~Age of woman at 31 March (column 1)~~

- The age bands are derived from the PERSON BIRTH DATE:

~~Under 20 (line 0001)~~

~~20-24 (line 0002)~~

~~25-29 (line 0003)~~

~~30-34 (line 0004)~~

~~35-39 (line 0005)~~

~~40-44 (line 0006)~~

~~45-49 (line 0007)~~

~~50-54 (line 0008)~~

~~55-59 (line 0009)~~

~~60-64 (line 0010)~~

~~65-69 (line 0011)~~

~~70-74 (line 0012)~~

~~75-79 (line 0013)~~

~~80 & over (line 0014)~~

~~Number of women resident in Primary Care Trust responsible population (column 2)~~

- This is the total number of women of all ages derived from the registers maintained by the Primary Care Trust to ensure compatibility with the other data recorded on the return.

~~The responsible population includes:~~

- all patients on the lists of the GPs in the Primary Care Trust;

~~and~~

- the unregistered population who live within the geographical area for which the Primary Care Trust is responsible.

~~Number of women recorded as having recall ceased (columns 3, 4 and 5)~~

- These columns do not include women with the SCREENING STATUS classification of *Recall suspended*.

- Column 3 counts women in the [Screening Programme](#) with the [SCREENING STATUS](#) classification of *Recall ceased – clinical reasons*. Women no longer eligible for screening due to removal of the cervix are included.

- Column 4 counts the number of women with the [SCREENING STATUS](#) classification of *Recall ceased – age reasons*, and column 5 counts those with the classification of *Recall ceased – other reasons*.

Eligible population (column 6)

- This is calculated by subtracting the number of women in column 3 (i.e. women with the [SCREENING STATUS](#) classification of *Recall ceased – clinical reasons*) from the number in column 2 (i.e. the [Primary Care Trust](#) responsible population).

Number of women whose most recent test was no more than 5 years ago (column 7)

- This is calculated from the addition of columns (2) to (5) in part A3.

Coverage (%) – less than 5 years since last adequate test (column 8)

- This is calculated from columns (6) and (7) in Part A2.

Target Age Group (25-64) (line 0015)

- This counts the number of women in the [Screening Programme](#) aged between 25 and 64 on 31 March (sum of lines 0003 to 0010). Coverage of the [Screening Programme](#) is based on women aged 25 to 64, and not on the NHS Cervical Screening Programme's target population of women aged 20 to 64 who are eligible to receive screening test invitations.

Total all ages (line 9999)

- This is the total for all age groups counted in lines 0001 to 0014 for each category of women.

KC53 2 (RETIRED) renamed from KC53 2

Change to Supporting Information: Changed Name, status to Retired, Description

- Changed Name from Data_Dictionary.Messages.Central_Return_Forms.Community.KC53.kc53_2 to Retired.Data_Dictionary.Messages.Central_Return_Forms.Community.KC53.kc53_2
- Retired kc53 2
- Changed Description

KC53 3 (RETIRED) renamed from KC53 3

Change to Supporting Information: Changed Name, status to Retired, Description

This item has been retired from the NHS Data Model and Dictionary.

The last live version of this item is available in the March 2019 release of the NHS Data Model and Dictionary.

Access to this version can be obtained by emailing information.standards@nhs.net with "NHS Data Model and Dictionary - Archive Request" in the email subject line.

KC53 3 (RETIRED) renamed from KC53 3

Change to Supporting Information: Changed Name, status to Retired, Description

Central Return Form Guidance

KC53: Adult Screening Programmes: Cervical Screening

~~This return is in development by the NHS Cancer Screening Programme, therefore the information should not be used.~~

~~For further information on National Cervical Screening, please see the [NHS Digital website](#).~~

~~Part A3: Cervical Screening Programme – Screening Status of Eligible Women at 31 March YYYY~~

- ~~This part of the return collects information specifically about the number of women screened by time since their last test. It includes all women who have had a [Screening Test](#) at any time during their life, even if the test was not part of a call and recall system, but was taken opportunistically. It does not include inadequate tests.~~

~~Age of women at 31 March (column 1)~~

- ~~The age bands are derived from the [PERSON BIRTH DATE](#).~~

~~Under 20 (line 0001)~~

~~20-24 (line 0002)~~

~~25-29 (line 0003)~~

~~30-34 (line 0004)~~

~~35-39 (line 0005)~~

~~40-44 (line 0006)~~

~~45-49 (line 0007)~~

~~50-54 (line 0008)~~

~~55-59 (line 0009)~~

~~60-64 (line 0010)~~

~~65-69 (line 0011)~~

~~70-74 (line 0012)~~

~~75-79 (line 0013)~~

~~80 & over (line 0014)~~

~~Number of women whose most recent adequate test was in last 1.5 years (column 2)~~

~~Number of women whose most recent adequate test was more than 1.5 years but no more than 3 years ago (column 3)~~

~~Number of women whose most recent adequate test was more than 3 years but no more than 3.5 years ago (column 4)~~

~~Number of women whose most recent adequate test was more than 3.5 years but no more than 5 years ago (column 5)~~

~~Number of women whose most recent adequate test was more than 5 years but no more than 10 years ago (column 6)~~

~~Number of women whose most recent adequate test was more than 10 years but no more than 15 years ago (column 7)~~

~~Number of women whose most recent adequate test was more than 15 years ago (column 8)~~

- The [SCREENING TEST DATE](#) should be used to derive the count of women tested in the time periods required by the return.

~~Women called but no adequate smear (column 9)~~

- This is a count of the number of women who have been invited at any time in their lives but have no adequate smear.

~~Women called but never attended (column 10)~~

- This is a count of the number of women who have been invited at any time in their lives but have never attended.

~~Number of women with no cytology record (column 11)~~

- This is a count of women in the [Primary Care Trust](#) responsible population with no cervical screening history.

The responsible population includes:

- all patients on the lists of the GPs in the [Primary Care Trust](#);
- and
- the unregistered population who live within the geographical area for which the [Primary Care Trust](#) is responsible.

~~Target Age Group (25-64) (line 0015)~~

- This counts the number of women in the [Screening Programme](#) aged between 25 and 64 on 31 March (sum of lines 0003 to 0010). Coverage of the [Screening Programme](#) is based on women aged 25 to 64, and not on the NHS Cervical Screening Programme's target population of women aged 20 to 64 who are eligible to receive [Screening Test Invitations](#).

A ~~Screening Programme~~ is a ~~HEALTH PROGRAMME~~ where the ~~HEALTH PROGRAMME TYPE~~ is National Code '~~Screening Programme~~'.

~~Total all ages (line 0000)~~

- ~~This is the total for all age groups counted in lines 0001 to 0014 for each category of women.~~

~~KC53 3 (RETIRED)_ renamed from KC53 3~~

~~Change to Supporting Information: Changed Name, status to Retired, Description~~

- ~~Changed Name from Data_Dictionary.Messages.Central_Return_Forms.Community.KC53.kc53_3 to Retired.Data_Dictionary.Messages.Central_Return_Forms.Community.KC53.kc53_3~~
- ~~Retired kc53 3~~
- ~~Changed Description~~

~~KC53 4 (RETIRED)_ renamed from KC53 4~~

~~Change to Supporting Information: Changed Name, status to Retired, Description~~

~~This item has been retired from the NHS Data Model and Dictionary.~~

~~The last live version of this item is available in the March 2019 release of the NHS Data Model and Dictionary.~~

~~Access to this version can be obtained by emailing information.standards@nhs.net with "NHS Data Model and Dictionary - Archive Request" in the email subject line.~~

~~KC53 4 (RETIRED)_ renamed from KC53 4~~

~~Change to Supporting Information: Changed Name, status to Retired, Description~~

~~Central Return Form Guidance~~

~~[KC53: Adult Screening Programmes: Cervical Screening](#)~~

~~This return is in development by the NHS Cancer Screening Programme, therefore the information should not be used.~~

~~For further information on National Cervical Screening, please see the [NHS Digital website](#).~~

~~Part B: Cervical Screening Programme - Number of Women Invited~~

- ~~Part B of KC53 requires age banded data on the number of women invited for screening, the number invited relates to [Screening Test Invitations](#) with an~~

APPOINTMENT DATE OFFERED between 1 April and 31 March. This date does not necessarily relate to a due date in the year – e.g. the Screening Test could be set to take place outside this period. Where a woman is invited on more than one occasion in the year, the last invitation is recorded on KC53.

A Screening Test Invitation is an APPOINTMENT associated with an APPOINTMENT OFFER for a Screening Test.

Age of woman at 31 March (column 1)

- The age bands are derived from the PERSON BIRTH DATE.

Under 20 (line 0001)

20-24 (line 0002)

25-29 (line 0003)

30-34 (line 0004)

35-39 (line 0005)

40-44 (line 0006)

45-49 (line 0007)

50-54 (line 0008)

55-59 (line 0009)

60-64 (line 0010)

65-69 (line 0011)

70-74 (line 0012)

75 & over (line 0013)

Call (column 2)

- A count of the number of women invited for their first screen i.e. those who have never been screened before. The INVITATION TYPE of the Screening Test Invitation will have the classification *First call*.

Routine recall (column 3)

- A count of the number of women invited for screening in the year as a result of a routine recall for screening. These women will have had a previous negative result and been recalled after the usual interval (3 to 5 years). The INVITATION TYPE of the Screening Test Invitation will have the classification *Routine recall*.

Surveillance (column 4)

- A count of the number of women invited for early screening because of a previous abnormal screening result or following treatment for cervical abnormalities. The INVITATION TYPE of the Screening Test Invitation will have the classification *Repeat in less than three years for surveillance*.

Abnormality (column 5)

- A count of the number of women invited for early screening because their last smear showed some abnormality and a repeat was advised. The [INVITATION TYPE](#) of the [Screening Test Invitation](#) will have the classification *Repeat in less than three years because of abnormality*.

~~Inadequate smear (column 6)~~

- A count of the number of women invited for screening because their last smear was inadequate. The [INVITATION TYPE](#) of the [Screening Test Invitation](#) will have either the classification *Repeat in less than three years because of inadequate smear*, or the classification *Technical recall (inadequate test)*.

~~Target age group (line 0014)~~

- This counts the number of women in the [Screening Programme](#) aged between 20 and 64 on 31 March (sum of lines 0002 to 0010).

A [Screening Programme](#) is a [HEALTH PROGRAMME](#) where the [HEALTH PROGRAMME TYPE](#) is National Code '*Screening Programme*'.

~~Total all ages (line 9999)~~

- This is the total for all age groups counted in lines 0001 to 0013 for each [INVITATION TYPE](#).

KC53 4 (RETIRED) renamed from KC53 4

Change to Supporting Information: Changed Name, status to Retired, Description

- Changed Name from Data_Dictionary.Messages.Central_Return_Forms.Community.KC53.kc53_4 to Retired.Data_Dictionary.Messages.Central_Return_Forms.Community.KC53.kc53_4
- Retired kc53 4
- Changed Description

KC53 5 (RETIRED) renamed from KC53 5

Change to Supporting Information: Changed Name, status to Retired, Description

This item has been retired from the NHS Data Model and Dictionary.

The last live version of this item is available in the March 2019 release of the NHS Data Model and Dictionary.

Access to this version can be obtained by emailing information.standards@nhs.net with "NHS Data Model and Dictionary - Archive Request" in the email subject line.

Change to Supporting Information: Changed Name, status to Retired, Description

Central Return Form Guidance

[KC53: Adult Screening Programmes: Cervical Screening](#)

~~This return is in development by the NHS Cancer Screening Programme, therefore the information should not be used.~~

~~For further information on National Cervical Screening, please see the [NHS Digital website](#).~~

~~Part C1: Cervical Screening Programme – Number of Women Tested – by Age~~

- ~~Part C1 of KC53 requires data on the women screened in the year, by invitation or opportunistically. The number screened relates to [Screening Tests](#) with a [SCREENING TEST DATE](#) between 1 April and 31 March. Where a woman is screened more than once in the year, for whatever reason, her [INVITATION TYPE](#) at her first [SCREENING TEST DATE](#) in the review period is to be recorded.~~

~~Call (column 2)~~

- ~~A count of the number of women screened in the year as a result of a first call for screening within 12 months of the original invitation. These women will not have been screened before. The [INVITATION TYPE](#) of the [Screening Test Invitation](#) will have the classification *First call*.~~

~~A [Screening Test Invitation](#) is an [APPOINTMENT](#) associated with an [APPOINTMENT OFFER](#) for a [Screening Test](#).~~

~~Routine recall (column 3)~~

- ~~A count of the number of women screened in the year as a result of a routine recall for screening within 12 months of the recall invitation. These women will have had a previous negative result and been recalled after the usual interval (3 to 5 years). The [INVITATION TYPE](#) of the [Screening Test Invitation](#) will have the classification *Routine recall*.~~

~~Surveillance (column 4)~~

- ~~A count of the number of women screened in the year as a result of a non-routine recall for screening within 12 months of the recall invitation. The [INVITATION TYPE](#) of the [Screening Test Invitation](#) will have the classification *Repeat in less than 3 years for surveillance*.~~

~~Abnormality (column 5)~~

- A count of the number of women screened in the year as a result of a non-routine recall for screening within 12 months of the recall invitation. These women will usually have had a recent mildly abnormal smear. The INVITATION TYPE of the Screening Test Invitation will have the classification *Repeat in less than 3 years because of abnormality*.

Inadequate smear (column 6)

- Enter the number of women screened in the year as a result of a technical recall within 12 months of the recall invitation. The INVITATION TYPE of the Screening Test Invitation will have either the classification *Repeat in less than 3 years because of inadequate smear* or the classification *Technical recall (inadequate test)*.

While recall suspended (column 7)

- A count of the number of women screened in the year who were suspended from the call and recall system at the time of their SCREENING TEST DATE. These women will have had a Screening Test with the OPPORTUNISTIC SCREENING TYPE classification of *'screened while recall suspended'*.

While recall ceased (column 8)

- A count of the number of women screened opportunistically in the year who were ceased from the call and recall system at the time of their SCREENING TEST DATE. These women will have had a Screening Test with the OPPORTUNISTIC SCREENING TYPE classification of *'screened while recall ceased'*.

Not Invited by Programme (column 9)

- A count of the number of women screened opportunistically during the year. This includes all women whose Recall Status was "No action", "GP not informed", "GP informed", "ZZZ GP" and those women whose Recall Status was "Final non-responder" where the initial invitation was generated more than 12 months ago. These women will have had a Screening Test with the OPPORTUNISTIC SCREENING TYPE classification of *'not invited by programme'*.

Target age group (line 0014)

- This counts the number of women in the Screening Programme aged between 20 and 64 on 31 March (sum of lines 0002 to 0010).

Total all women (line 9999)

- This is the total for all age groups counted in lines 0001 to 0013 for each INVITATION TYPE or women who have had a Screening Test with the OPPORTUNISTIC SCREENING TYPE recorded.

KC53 5 (RETIRED)_ renamed from KC53 5

Change to Supporting Information: Changed Name, status to Retired, Description

- Changed Name from Data_Dictionary.Messages.Central_Return_Forms.Community.KC53.kc53_5 to Retired.Data_Dictionary.Messages.Central_Return_Forms.Community.KC53.kc53_5
 - Retired kc53 5
 - Changed Description
-

KC53 6 (RETIRED)_ renamed from KC53 6

Change to Supporting Information: Changed Name, status to Retired, Description

This item has been retired from the NHS Data Model and Dictionary.

The last live version of this item is available in the March 2019 release of the NHS Data Model and Dictionary.

Access to this version can be obtained by emailing information.standards@nhs.net with "NHS Data Model and Dictionary - Archive Request" in the email subject line.

KC53 6 (RETIRED)_ renamed from KC53 6

Change to Supporting Information: Changed Name, status to Retired, Description

Central Return Form Guidance

[KC53: Adult Screening Programmes: Cervical Screening](#)

~~This return is in development by the NHS Cancer Screening Programme, therefore the information should not be used.~~

~~For further information on National Cervical Screening, please see the [NHS Digital website](#).~~

~~Part C2: Cervical Screening Programme – Number of Women Tested – by Result~~

- ~~• Part C2 of KC53 requires data on the women aged 20–64 screened in the year, by invitation or opportunistically. The number screened relates to [Screening Tests](#) with a [SCREENING TEST DATE](#) between 1 April and 31 March. Where a woman is screened more than once in the year, for whatever reason, her [INVITATION TYPE](#) at her first [SCREENING TEST DATE](#) in the review period is to be recorded.~~

~~Call (column 2)~~

- ~~• A count of the number of women screened in the year as a result of a first call for screening within 12 months of the original invitation. These women will not have been~~

screened before. The INVITATION TYPE of the Screening Test Invitation will have the classification *First call*.

A Screening Test Invitation is an APPOINTMENT associated with an APPOINTMENT OFFER for a Screening Test.

~~Routine recall (column 3)~~

- ~~• A count of the number of women screened in the year as a result of a routine recall for screening within 12 months of the recall invitation. These women will have had a previous negative result and been recalled after the usual interval (3 to 5 years). The INVITATION TYPE of the Screening Test Invitation will have the classification *Routine recall*.~~

~~Surveillance (column 4)~~

- ~~• A count of the number of women screened in the year as a result of a non-routine recall for screening within 12 months of the recall invitation. The INVITATION TYPE of the Screening Test Invitation will have the classification *Repeat in less than 3 years for surveillance*.~~

~~Abnormality (column 5)~~

- ~~• A count of the number of women screened in the year as a result of a non-routine recall for screening within 12 months of the recall invitation. These women will usually have had a recent mildly abnormal smear. The INVITATION TYPE of the Screening Test Invitation will have the classification *Repeat in less than 3 years because of abnormality*.~~

~~Inadequate smear (column 6)~~

- ~~• Enter the number of women screened in the year as a result of a technical recall within 12 months of the recall invitation. The INVITATION TYPE of the Screening Test Invitation will have either the classification *Repeat in less than 3 years because of inadequate smear* or the classification *Technical recall (inadequate test)*.~~

~~While recall suspended (column 7)~~

- ~~• A count of the number of women screened in the year who were suspended from the call and recall system at the time of their SCREENING TEST DATE. These women will have had a Screening Test with the OPPORTUNISTIC SCREENING TYPE classification of '*screened while recall suspended*'.~~

~~While recall ceased (column 8)~~

- ~~• A count of the number of women screened opportunistically in the year who were ceased from the call and recall system at the time of their SCREENING TEST DATE.~~

These women will have had a [Screening Test](#) with the [OPPORTUNISTIC SCREENING TYPE](#) classification of '*screened while recall ceased*'.

Not Invited by Programme (column 9)

- A count of the number of women screened opportunistically during the year. This includes all women whose Recall Status was "No action", "GP not informed", "GP informed", "ZZZ GP" and those women whose Recall Status was "Final non-responder" where the initial invitation was generated more than 12 months ago. These women will have had a [Screening Test](#) with the [OPPORTUNISTIC SCREENING TYPE](#) classification of '*not invited by programme*'.

Result of test

- This is classified by the following [CYTOLOGY RESULT TYPES](#):
Inadequate (cat. 1) (line 0001)
Negative (cat. 2) (line 0002)
Borderline changes (cat. 8) (line 0003)
Mild dyskaryosis (cat. 3) (line 0004)
Moderate dyskaryosis (cat. 7) (line 0005)
Severe dyskaryosis (cat. 4) (line 0006)
Severe dyskaryosis/?invasive carcinoma (cat. 5) (line 0007)
?Glandular neoplasia (cat. 6) (line 0008)

Total women tested aged 20-64 (line 9999)

- This counts the number of women in the [Screening Programme](#) aged between 20 and 64 on 31 March (sum of lines 0001 to 0008).

A [Screening Programme](#) is a [HEALTH PROGRAMME](#) where the [HEALTH PROGRAMME TYPE](#) is National Code '*Screening Programme*'.

KC53 6 (RETIRED) renamed from KC53 6

Change to Supporting Information: Changed Name, status to Retired, Description

- Changed Name from Data_Dictionary.Messages.Central_Return_Forms.Community.KC53.kc53_6 to Retired.Data_Dictionary.Messages.Central_Return_Forms.Community.KC53.kc53_6
- Retired kc53 6
- Changed Description

KC53 7 (RETIRED) renamed from KC53 7

Change to Supporting Information: Changed Name, status to Retired, Description

This item has been retired from the NHS Data Model and Dictionary.

The last live version of this item is available in the March 2019 release of the NHS Data Model and Dictionary.

Access to this version can be obtained by emailing information.standards@nhs.net with "NHS Data Model and Dictionary - Archive Request" in the email subject line.

KC53 7 (RETIRED) renamed from KC53 7

Change to Supporting Information: Changed Name, status to Retired, Description

Central Return Form Guidance

[KC53: Adult Screening Programmes: Cervical Screening](#)

~~This return is in development by the NHS Cancer Screening Programme, therefore the information should not be used.~~

~~For further information on National Cervical Screening, please see the [NHS Digital website](#).~~

~~Part C3: Cervical Screening Programme – Number of Tests – by Result~~

- ~~Part C3 of KC53 requires data on all tests in the review period, not limited to the target age group 20 – 64, by invitation or opportunistically. The number screened relates to [Screening Tests](#) with a [SCREENING TEST DATE](#) between 1 April and 31 March. Where a woman is screened more than once in the year, for whatever reason, her [INVITATION TYPE](#) at her first [SCREENING TEST DATE](#) in the review period is to be recorded.~~

~~Call (column 2)~~

- ~~A count of the number of tests in the year as a result of a first call for screening within 12 months of the original invitation. These women will not have been screened before. The [INVITATION TYPE](#) of the [Screening Test Invitation](#) will have the classification *First call*.~~

~~A [Screening Test Invitation](#) is an [APPOINTMENT](#) associated with an [APPOINTMENT OFFER](#) for a [Screening Test](#).~~

~~Routine recall (column 3)~~

- ~~A count of the number of tests in the year as a result of a routine recall for screening within 12 months of the recall invitation. These women will have had a previous negative result and been recalled after the usual interval (3 to 5 years). The [INVITATION TYPE](#) of the [Screening Test Invitation](#) will have the classification *Routine recall*.~~

~~Surveillance (column 4)~~

- A count of the number of tests in the year as a result of a non-routine recall for screening within 12 months of the recall invitation. The [INVITATION TYPE](#) of the [Screening Test Invitation](#) will have the classification *Repeat in less than 3 years for surveillance*.

Abnormality (column 5)

- A count of the number of tests in the year as a result of a non-routine recall for screening within 12 months of the recall invitation. These women will usually have had a recent mildly abnormal smear. The [INVITATION TYPE](#) of the [Screening Test Invitation](#) will have the classification *Repeat in less than 3 years because of abnormality*.

Inadequate smear (column 6)

- Enter the number of tests in the year as a result of a technical recall within 12 months of the recall invitation. The [INVITATION TYPE](#) of the [Screening Test Invitation](#) will have either the classification *Repeat in less than 3 years because of inadequate smear* or the classification *Technical recall (inadequate test)*.

While recall suspended (column 7)

- A count of the number of tests in the year of women who were suspended from the call and recall system at the time of their [SCREENING TEST DATE](#). These women will have had a [Screening Test](#) with the [OPPORTUNISTIC SCREENING TYPE](#) classification of *'Screened while recall suspended'*

While recall ceased (column 8)

- A count of the number of tests in the year of women who were ceased from the call and recall system at the time of their [SCREENING TEST DATE](#). These women will have had a [Screening Test](#) with the [OPPORTUNISTIC SCREENING TYPE](#) classification of *'screened while recall ceased'*.

Not Invited by Programme (column 9)

- A count of the number of opportunistic tests during the year. This includes all women whose Recall Status was "No action", "GP not informed", "GP informed", "ZZZ GP" and those women whose Recall Status was "Final non-responder" where the initial invitation was generated more than 12 months ago. These women will have had a [Screening Test](#) with the [OPPORTUNISTIC SCREENING TYPE](#) classification *'not invited by programme'*.

Result of test

- This is classified by the following [CYTOLOGY RESULT TYPES](#):
Inadequate (cat. 1) (line 0001)
Negative (cat. 2) (line 0002)

~~Borderline changes (cat. 8) (line 0003)~~
~~Mild dyskaryosis (cat. 3) (line 0004)~~
~~Moderate dyskaryosis (cat. 7) (line 0005)~~
~~Severe dyskaryosis (cat. 4) (line 0006)~~
~~Severe dyskaryosis/?invasive carcinoma (cat. 5) (line 0007)~~
~~?Glandular neoplasia (cat. 6) (line 0008)~~

~~Total all results (line 9999)~~

- This counts the number of tests in the [Screening Programme](#) for all age groups on 31 March (sum of lines 0001 to 0008).

A [Screening Programme](#) is a [HEALTH PROGRAMME](#) where the [HEALTH PROGRAMME TYPE](#) is National Code '*Screening Programme*'.

KC53 7 (RETIRED) renamed from **KC53 7**

Change to Supporting Information: Changed Name, status to Retired, Description

- Changed Name from Data_Dictionary.Messages.Central_Return_Forms.Community.KC53.kc53_7 to Retired.Data_Dictionary.Messages.Central_Return_Forms.Community.KC53.kc53_7
- Retired kc53 7
- Changed Description

KC53 8 (RETIRED) renamed from **KC53 8**

Change to Supporting Information: Changed Name, status to Retired, Description

This item has been retired from the NHS Data Model and Dictionary.

The last live version of this item is available in the March 2019 release of the NHS Data Model and Dictionary.

Access to this version can be obtained by emailing information.standards@nhs.net with "NHS Data Model and Dictionary - Archive Request" in the email subject line.

KC53 8 (RETIRED) renamed from **KC53 8**

Change to Supporting Information: Changed Name, status to Retired, Description

Central Return Form Guidance

[KC53: Adult Screening Programmes: Cervical Screening](#)

~~This return is in development by the NHS Cancer Screening Programme, therefore the information should not be used.~~

~~For further information on National Cervical Screening, please see the [NHS Digital website](#).~~

~~Part D: Cervical Screening Programme – Result of Test~~

- ~~Part D of KC53 requires age-banded data on the most severe results of cervical screening tests recorded during the year. It does not include inadequate tests. Where a woman has only one smear tested in the year which turns out to be inadequate, or more than one, all of which are inadequate, no entry is required.~~
- ~~The data are based on the results of the woman's most severe test in the year and relate to [Screening Tests](#) with a [SCREENING TEST DATE](#) between 1 April – 31 March. Classifications are those of [CYTOLOGY RESULT TYPES](#) of a [Request for Pathology Investigation](#) and are in accordance with the categories shown in box 22 of HMR 101/5 Request/Report for Cervical or Vaginal Cytology.~~

~~A [Request for Pathology Investigation](#) is a [DIAGNOSTIC TEST REQUEST](#) where the [DIAGNOSTIC TEST REQUEST TYPE](#) is National Code 'Request for Pathology Investigation.'~~

~~Negative (column 2)~~

- ~~A count of the number of women with a [CYTOLOGY RESULT TYPE](#) classification of *Negative (cat. 2)*.~~

~~Borderline (column 3)~~

- ~~A count of the number of women whose most severe [CYTOLOGY RESULT TYPE](#) classification was *Borderline changes (cat. 8)* .~~

~~Mild dyskaryosis (column 4)~~

- ~~A count of the number of women whose most severe [CYTOLOGY RESULT TYPE](#) classification was *Mild dyskaryosis (column 4)* .~~

~~Moderate dyskaryosis (column 5)~~

- ~~A count of the number of women whose most severe [CYTOLOGY RESULT TYPE](#) classification was *Moderate dyskaryosis (cat. 7)*.~~

~~Severe dyskaryosis (column 6)~~

- ~~A count of the number of women whose most severe [CYTOLOGY RESULT TYPE](#) classification was *Severe dyskaryosis (cat. 4)*.~~

~~Severe dyskaryosis/?invasive carcinoma (column 7)~~

- A count of the number of women whose most severe CYTOLOGY RESULT TYPE classification was *Severe dyskaryosis/?invasive carcinoma (cat. 5)*.

~~?Glandular neoplasia (column 8)~~

- A count of the number of women whose most severe CYTOLOGY RESULT TYPE classification was *?Glandular neoplasia (cat. 6)*.

~~Target age group (line 0014)~~

- This counts the number of women in the Screening Programme aged between 20 and 64 on 31 March (sum of lines 0002 to 0010).

~~A Screening Programme is a HEALTH PROGRAMME where the HEALTH PROGRAMME TYPE is National Code 'Screening Programme'.~~

~~Total all ages (line 9999)~~

- This is the total for all age groups counted in lines 0001 to 0013 for each CYTOLOGY RESULT TYPE classification.

KC53 8 (RETIRED) renamed from KC53 8

Change to Supporting Information: Changed Name, status to Retired, Description

- Changed Name from Data_Dictionary.Messages.Central_Return_Forms.Community.KC53.kc53_8 to Retired.Data_Dictionary.Messages.Central_Return_Forms.Community.KC53.kc53_8
- Retired kc53 8
- Changed Description

KC53 9 (RETIRED) renamed from KC53 9

Change to Supporting Information: Changed Name, status to Retired, Description

This item has been retired from the NHS Data Model and Dictionary.

The last live version of this item is available in the March 2019 release of the NHS Data Model and Dictionary.

Access to this version can be obtained by emailing information.standards@nhs.net with "NHS Data Model and Dictionary - Archive Request" in the email subject line.

KC53 9 (RETIRED) renamed from KC53 9

Change to Supporting Information: Changed Name, status to Retired, Description

Central Return Form Guidance

KC53: Adult Screening Programmes: Cervical Screening

~~This return is in development by the NHS Cancer Screening Programme, therefore the information should not be used.~~

~~For further information on National Cervical Screening, please see the [NHS Digital website](#).~~

~~Part E: Cervical Screening Programme – Notification of Result – Waiting Times~~

- ~~This part of the return requires information on the length of time elapsing between a woman taking a smear test and when notification of the result is sent to her by the call and recall service. The national standard to be achieved is that women should be advised in writing of the result of their test four weeks from the date the test was taken. The information is used to monitor the performance of [Screening Programmes](#) and [Laboratories](#).~~

~~A [Screening Programme](#) is a [HEALTH PROGRAMME](#) where the [HEALTH PROGRAMME TYPE](#) is National Code '[Screening Programme](#)'.~~

- ~~The return also collects information on those instances where the letter is sent directly by the [Laboratory](#) or by some other agency instead of by the call and recall service.~~
- ~~The return counts all tests and not just those tests with the most severe result. It includes only smears taken as part of a NHS [Screening Programme](#).~~

~~Number of weeks between date smear is taken and date result is sent from the call and recall service~~

- ~~This is the number of weeks between the [SCREENING TEST DATE](#) and the [Screening Result Sent Date](#) of the [Screening Test](#), where the [RESULT SENT DIRECT](#) indicator is Yes.~~

~~[Screening Result Sent Date](#) is the same as attribute [ACTIVITY DATE](#) where [ACTIVITY DATE TYPE](#) is National Code '[Screening Result Sent Date](#)'.~~

- ~~They are sub-divided into the following time periods:~~

- ~~Less than or equal to four weeks (line 0001)~~
- ~~> 4 weeks up to 6 weeks (line 0002)~~
- ~~> 6 weeks up to 8 weeks (line 0003)~~
- ~~> 8 weeks up to 10 weeks (line 0004)~~
- ~~> 10 weeks up to 12 weeks (line 0005)~~
- ~~> Over 12 weeks (line 0006)~~

~~Number of tests (column 2)~~

- This counts the number of [Screening Tests](#) where results were sent from the call and recall service for each time period.

Total (line 0007)

- This is the total of [Screening Tests](#) for all time periods counted in lines 0001 to 0006.

Letter not sent by the call and recall service (line 0008)

- This counts the number of [Screening Tests](#) where the [RESULT SENT DIRECT](#) indicator is *No*, indicating that the result was not sent by the call and recall service.

KC53 9 (RETIRED)_ renamed from KC53 9

Change to Supporting Information: Changed Name, status to Retired, Description

- Changed Name from Data_Dictionary.Messages.Central_Return_Forms.Community.KC53.kc53_9 to Retired.Data_Dictionary.Messages.Central_Return_Forms.Community.KC53.kc53_9
- Retired kc53 9
- Changed Description

SCREENING RESULT SENT DATE (RETIRED)_ renamed from SCREENING RESULT SENT DATE

Change to Supporting Information: Changed Name, status to Retired, Description

[Screening Result Sent Date](#) is an [ACTIVITY DATE TIME](#). **This item has been retired from the NHS Data Model and Dictionary.**

The date on which the result of a cervical smear is sent from the call and recall service. **The last live version of this item is available in the March 2019 release of the NHS Data Model and Dictionary.**

Access to this version can be obtained by emailing information.standards@nhs.net with "NHS Data Model and Dictionary - Archive Request" in the email subject line.

SCREENING RESULT SENT DATE (RETIRED)_ renamed from SCREENING RESULT SENT DATE

Change to Supporting Information: Changed Name, status to Retired, Description

- Changed Name from Data_Dictionary.NHS_Business_Definitions.S.Screening_Result_Sent_Date to Retired.Data_Dictionary.NHS_Business_Definitions.S.Screening_Result_Sent_Date
- Retired Screening Result Sent Date
- Changed Description

SCREENING TEST INVITATION (RETIRED) renamed from SCREENING TEST INVITATION

Change to Supporting Information: Changed Name, status to Retired, Description

[Screening Test Invitation](#) is an [APPOINTMENT](#). This item has been retired from the NHS Data Model and Dictionary.

An invitation to a [PERSON IN PROGRAMME](#) who is to be given a [Screening Test](#) as part of a planned [Screening Programme](#). The last live version of this item is available in the March 2019 release of the NHS Data Model and Dictionary.

Access to this version can be obtained by emailing information.standards@nhs.net with "NHS Data Model and Dictionary - Archive Request" in the email subject line.

SCREENING TEST INVITATION (RETIRED) renamed from SCREENING TEST INVITATION

Change to Supporting Information: Changed Name, status to Retired, Description

- Changed Name from Data_Dictionary.NHS_Business_Definitions.S.Screening_Test_Invitation to Retired.Data_Dictionary.NHS_Business_Definitions.S.Screening_Test_Invitation
- Retired Screening Test Invitation
- Changed Description

APPOINTMENT OFFER

Change to Class: Changed Attributes, Description

A record of the [APPOINTMENT DATE OFFERED](#) and [APPOINTMENT TIME OFFERED](#) for an [APPOINTMENT](#) to a [PATIENT](#) and the date and time that the offer or request was made.

For a [Screening Test](#) the [INVITATION TYPE](#) should be recorded.

More than one [APPOINTMENT OFFER](#) can be made to a [PATIENT](#) for an [APPOINTMENT](#).

When a [PATIENT](#) accepts an [APPOINTMENT OFFER](#), the [APPOINTMENT DATE OFFERED](#) and [APPOINTMENT TIME OFFERED](#) of the offer becomes the [APPOINTMENT DATE](#) and [APPOINTMENT TIME](#) of the [APPOINTMENT](#).

Where more than one [APPOINTMENT OFFER](#) has been made for an [APPOINTMENT](#) and one has been accepted all the other offers for the same [APPOINTMENT](#) should be marked as refused.

[APPOINTMENT ACCEPTED DATE](#) records when an [APPOINTMENT OFFER](#) was accepted

APPOINTMENT OFFER

Change to Class: Changed Attributes, Description

Attributes of this Class are:

K APPOINTMENT DATE OFFERED
K APPOINTMENT TIME OFFERED
APPOINTMENT ACCEPTED DATE
INVITATION OFFER DATE SENT
~~INVITATION TYPE~~
REASONABLE OFFER INDICATOR

HEALTH PROGRAMME

Change to Class: Changed Attributes

Attributes of this Class are:

BREAST SCREENING AGE GROUP FOR KC62 PARTS 1 TO 3
BREAST SCREENING AGE GROUP FOR KC62 PARTS 4 TO 5
BREAST SCREENING AGE GROUP FOR KC63
BREAST SCREENING READING TYPE
~~CERVICAL SCREENING RECALL INTERVAL~~
HEALTH PROGRAMME TYPE
IMMUNISATION AGE GROUP
IMMUNISATION PROGRAMME TYPE

PERSON IN PROGRAMME

Change to Class: Changed Attributes

Attributes of this Class are:

BREAST SCREENING CALL STATUS
~~SCREENING STATUS~~

ACTIVITY DATE TYPE

Change to Attribute: Changed Description

The type of date that defines the usage with regard to the [ACTIVITY](#).

An [ACTIVITY](#) may have many dates associated with it but may only have one date of a particular type.

National Codes:

- 001 Angiogram Date (Retired July 2012)
- 002 [Arrival Date At Accident and Emergency Department](#)
- 003 Breast Assessment Date (Retired 1 January 2013)
- 004 Cancer Dental Assessment Date (Retired September 2018)
- 005 Colorectal or Stoma Nurse Seen Date (Retired 1 January 2013)
- 006 Coronary Angiography Date (Retired July 2012)
- 007 Care Programme Approach Review Date (Retired September 2018)
- 008 Date Biopsy Taken (Retired 01 April 2014)
- 009 [Discharge Date](#)
- 010 [Discharge Ready Date](#)
- 011 [End Date](#)
- 012 Event Date (Retired July 2012)
- 013 Expected Delivery Date (Retired September 2012)
- 014 [First Antenatal Assessment Date](#)
- 015 Full Postnatal Examination Date (Retired September 2012)
- 016 Initial Patient Contact Date (Retired July 2012)
- 017 Investigation Transfer Date (Retired July 2012)
- 018 Intrauterine Device Application Date (Retired September 2012)
- 019 Intrauterine Device Fitted Date (Retired September 2012)
- 020 Last Dosage Date (Retired April 2019)
- 021 Mental Health Care Assessment Date (Retired September 2012)
- 022 Miscarriage Date (Retired September 2012)
- 023 Pathology Result Due Date (Retired April 2019)
- 024 [Patient Informed Biopsy Result Date](#)
- 025 Patient Informed Of Outcome Date (Retired September 2012)
- 026 Smoking Quit Date (Retired October 2017)
- 027 Review Planned Date (Retired 01 April 2014)
- 028 Screening Result Date (Retired 01 April 2014)
- 029 [Screening Result Sent Date](#)
- 029 [Screening Result Sent Date \(Retired April 2019\)](#)
- 030 Specialist Palliative Care Date (Retired 01 April 2014)
- 031 [Start Date](#)
- 032 Cancer Symptoms First Noted Date (Retired September 2018)
- 033 Attendance Date (Retired September 2018)
- 034 [Clinical Intervention Date](#)
- 035 Immunisation Completion Date (Retired 01 September 2015)

036 Clinical Status Assessment Date (Retired September 2018)
037 Dose Given Date (Retired September 2012)
038 Test Date (Retired September 2012)
039 Contact Date (Retired September 2018)
040 Appointment Date (Retired September 2018)
041 Primary Procedure Date (Retired September 2018)
042 Second Operation Date (Retired 01 April 2014)
043 Speech and Language Assessment Date (Retired September 2018)
044 Third Operation Date (Retired 01 April 2014)
045 Date First Seen (Retired September 2018)
046 Statutory Assessment Date (Retired 01 January 2016)
047 Screening Test Date (Retired September 2018)
048 Genitourinary Care Contact Date (Retired January 2014)
049 [Consultant Upgrade Date](#)
101 Referral Closure Date (Community Care) (Retired 01 September 2015)
102 Discharge Letter Issued Date (Community Care) (Retired 01 September 2015)
103 Systemic Anti-Cancer Therapy Administration Date (Retired September 2018)
104 [Procedure Date](#)
105 Immunisation Date (Retired September 2018)
106 Antenatal Appointment Date (Retired 1 April 2019)
107 Antenatal Booking Appointment Date (Retired September 2018)
108 [Pregnancy First Contact Date](#)
109 Screening Test Information Given Date (Retired 1 April 2019)
110 [Assessment Date For Transplant Suitability](#)
111 [Accident and Emergency Initial Assessment Date](#)
112 [Accident and Emergency Date Seen For Treatment](#)
113 [Accident and Emergency Attendance Conclusion Date](#)
114 [Accident and Emergency Departure Date](#)
115 Clinical Assessment Date (Retired September 2018)
116 Imaging or Radiodiagnostic Event Date (Retired September 2018)
117 [Neonatal Critical Care Daily Care Date](#)
118 Two Year Neonatal Outcomes Assessment Date (Retired September 2018)
119 Date of Pregnancy Outcome (Current Fetus) (Retired 1 April 2019)
120 Neonatal Critical Incident Date (Retired 1 April 2019)
121 American Joint Committee on Cancer Stage Date (Retired September 2018)
122 Ann Arbor Stage Date (Retired September 2018)
123 Barcelona Clinic Liver Cancer Stage Date (Retired September 2018)
124 Binet Stage Date (Retired September 2018)
125 Chang Staging System Stage Date (Retired September 2018)
126 Clinical Stage Date (Pancreatic Cancer) (Retired September 2018)
127 Final Figo Stage Date (Retired September 2018)
128 Holistic Needs Assessment Completed Date (Retired September 2018)

- 129 Intergroup Rhabdomyosarcoma Study Post Surgical Group Date (Retired September 2018)
- 130 International Neuroblastoma Staging System Date (Retired 01 April 2017)
- 131 Myeloma International Staging System Stage Date (Retired September 2018)
- 132 Modified Dukes Stage Date (Retired September 2018)
- 133 [Multidisciplinary Team Discussion Date \(Cancer\)](#)
- 134 [Multidisciplinary Team Meeting Date \(Cancer\)](#)
- 135 Murphy St Jude Stage Date (Retired September 2018)
- 136 Rai Stage Date (Retired 01 April 2017)
- 137 Retinoblastoma Assessment Date (Retired September 2018)
- 138 TNM Stage Grouping Date (Final Pretreatment) (Retired September 2018)
- 139 TNM Stage Grouping Date (Integrated) (Retired September 2018)
- 140 Wilms Tumour Stage Date (Retired September 2018)
- 141 [Care Contact Cancellation Date](#)
- 142 [Care Contact Date](#)
- 143 Child Protection Plan End Date (Retired September 2018)
- 144 Child Protection Plan Start Date (Retired September 2018)
- 145 [Discharge Letter Issued Date \(Mental Health and Community Care\)](#)
- 146 Health Visitor First Antenatal Visit Date (Retired September 2018)
- 147 Infant Physical Examination Date (Retired September 2018)
- 148 Onward Referral Date (Retired September 2018)
- 149 [Referral Closure Date](#)
- 150 [Referral Rejection Date](#)
- 151 [Replacement Appointment Booked Date](#)
- 152 [Replacement Appointment Date Offered](#)
- 153 Service Discharge Date (Retired September 2018)
- 154 Date of Restrictive Intervention (Retired 01 April 2019)
- 155 [Indirect Activity Date](#)
- 156 Mental Health Crisis Plan Creation Date (Retired 01 April 2017)
- 157 Mental Health Crisis Plan Last Updated Date (Retired 01 April 2017)
- 158 [Care Plan Agreed Date](#)
- 159 [Care Plan Creation Date](#)
- 160 [Care Plan Implementation Date](#)
- 161 [Care Plan Last Updated Date](#)
- 162 Five Forensic Pathways Assessment Date (Retired September 2018)
- 163 International Neuroblastoma Risk Group Staging System Stage Date (Retired September 2018)
- 164 Stage Grouping Date (Testicular Cancer) (Retired September 2018)
- 165 [Emergency Care Arrival Date](#)
- 166 [Emergency Care Initial Assessment Date](#)
- 167 [Emergency Care Date Seen For Treatment](#)
- 168 [Emergency Care Attendance Conclusion Date](#)

- 169 [Emergency Care Departure Date](#)
- 170 Injury Date (Retired September 2018)
- 171 Referred To Service Assessment Date (Retired September 2018)
- 172 Intended Smoking Quit Date (Moved to [PLANNED ACTIVITY DATE TYPE](#) September 2018)
- 173 [Cancer Transformation Agreed Date \(Primary Cancer Pathway\)](#)
- 174 [Cancer Progression Agreed Date \(Primary Cancer Pathway\)](#)
- 175 [Clinical Trial Decision Date](#)
- 176 Treatment Start Date (Cancer) (Retired September 2018)
- 177 Cancer Faster Diagnosis Pathway End Date (Retired September 2018)
- 178 Cancer Referral To Treatment Period Start Date (Retired September 2018)
- 179 Cancer Treatment Period Start Date (Retired September 2018)
- 180 [Observable Entity Date](#)

Note: This list is not in alphabetical order.

CERVICAL SCREENING RECALL INTERVAL (RETIRED)_ renamed from CERVICAL SCREENING RECALL INTERVAL

Change to Attribute: Changed Name, status to Retired, Description

The interval in use for the recall of residents for cervical screening. **This item has been retired from the NHS Data Model and Dictionary.**

Classification: **The last live version of this item is available in the March 2019 release of the NHS Data Model and Dictionary.**

- a. ~~5 years~~
- b. ~~4 years~~
- c. ~~3 years~~
- d. ~~3 and 5 years mixed~~
- e. ~~Other~~

Access to this version can be obtained by emailing information.standards@nhs.net with "NHS Data Model and Dictionary - Archive Request" in the email subject line.

CERVICAL SCREENING RECALL INTERVAL (RETIRED)_ renamed from CERVICAL SCREENING RECALL INTERVAL

Change to Attribute: Changed Name, status to Retired, Description

- Changed Name from Data_Dictionary.Attributes.C.Ce.CERVICAL_SCREENING_RECALL_INTERVAL to Retired.Data_Dictionary.Attributes.C.CERVICAL_SCREENING_RECALL_INTERVAL
- Retired CERVICAL SCREENING RECALL INTERVAL
- Changed Description

CYTOLOGY SCREENING ACTION TYPE (RETIRED)_ renamed from CYTOLOGY SCREENING ACTION TYPE

Change to Attribute: Changed Name, status to Retired, Description

The action recommended as a consequence of a Cytology [Screening Test](#). This item has been retired from the NHS Data Model and Dictionary.

Classification: The last live version of this item is available in the March 2019 release of the NHS Data Model and Dictionary.

- a. Standard [Primary Care Trust](#) recall interval (Normal) (A)
- b. Repeat at interval specified (R)
- c. Refer for medical assessment or under medical treatment (Suspend) (S)
- d. Make no change to recall date (H)

References:

GP Health Authority Information Flows 1996.

[Department of Health and Social Care Form KC53: Adult Screening Programmes: Cervical Screening](#) Access to this version can be obtained by emailing information.standards@nhs.net with "NHS Data Model and Dictionary - Archive Request" in the email subject line.

CYTOLOGY SCREENING ACTION TYPE (RETIRED)_ renamed from CYTOLOGY SCREENING ACTION TYPE

Change to Attribute: Changed Name, status to Retired, Description

- Changed Name from Data_Dictionary.Attributes.C.Cy.CYTOLOGY_SCREENING_ACTION_TYPE to Retired.Data_Dictionary.Attributes.C.CYTOLOGY_SCREENING_ACTION_TYPE
- Retired CYTOLOGY SCREENING ACTION TYPE
- Changed Description

INVITATION TYPE (RETIRED)_ renamed from INVITATION TYPE

Change to Attribute: Changed Name, status to Retired, Description

The type of invitation for screening sent to a [PERSON](#). This item has been retired from the NHS Data Model and Dictionary.

Classification: The last live version of this item is available in the March 2019 release of the NHS Data Model and Dictionary.

- a. First call
- b. Routine recall
- c. Repeat in less than three years for surveillance
- d. Repeat in less than three years because of abnormality
- e. Repeat in less than three years because of inadequate smear
- f. Technical recall (inadequate test)

Access to this version can be obtained by emailing information.standards@nhs.net with "NHS Data Model and Dictionary - Archive Request" in the email subject line.

INVITATION TYPE (RETIRED) renamed from INVITATION TYPE

Change to Attribute: Changed Name, status to Retired, Description

- Changed Name from Data_Dictionary.Attributes.I.Int.INVITATION_TYPE to Retired.Data_Dictionary.Attributes.I.INVITATION_TYPE
- Retired INVITATION TYPE
- Changed Description

OPPORTUNISTIC SCREENING TYPE (RETIRED) renamed from OPPORTUNISTIC SCREENING TYPE

Change to Attribute: Changed Name, status to Retired, Description

The type of opportunistic screening that has led to a [Screening Test](#) being carried out opportunistically, i.e. not as a result of a [Screening Test Invitation](#). This item has been retired from the NHS Data Model and Dictionary.

Classification: The last live version of this item is available in the March 2019 release of the NHS Data Model and Dictionary.

- a. Screened while recall suspended
- b. Screened while recall ceased
- c. Not invited by programme

Access to this version can be obtained by emailing information.standards@nhs.net with "NHS Data Model and Dictionary - Archive Request" in the email subject line.

OPPORTUNISTIC SCREENING TYPE (RETIRED)_ renamed from OPPORTUNISTIC SCREENING TYPE

Change to Attribute: Changed Name, status to Retired, Description

- Changed Name from Data_Dictionary.Attributes.O.OPPORTUNISTIC_SCREENING_TYPE to Retired.Data_Dictionary.Attributes.O.OPPORTUNISTIC_SCREENING_TYPE
 - Retired OPPORTUNISTIC SCREENING TYPE
 - Changed Description
-

RESULT SENT DIRECT (RETIRED)_ renamed from RESULT SENT DIRECT

Change to Attribute: Changed Name, status to Retired, Description

~~An indicator of whether the cervical cytology result letter is sent directly to the [PATIENT](#) by the call and recall service.~~ **This item has been retired from the NHS Data Model and Dictionary.**

***Classification:* The last live version of this item is available in the March 2019 release of the NHS Data Model and Dictionary.**

- a. ~~Yes~~
- b. ~~No~~

Access to this version can be obtained by emailing information.standards@nhs.net with "NHS Data Model and Dictionary - Archive Request" in the email subject line.

RESULT SENT DIRECT (RETIRED)_ renamed from RESULT SENT DIRECT

Change to Attribute: Changed Name, status to Retired, Description

- Changed Name from Data_Dictionary.Attributes.R.Resp.RESULT_SENT_DIRECT to Retired.Data_Dictionary.Attributes.R.RESULT_SENT_DIRECT
 - Retired RESULT SENT DIRECT
 - Changed Description
-

SCREENING STATUS (RETIRED)_ renamed from SCREENING STATUS

Change to Attribute: Changed Name, status to Retired, Description

~~An indication of the call status of the [PATIENT](#) in a [Screening Programme](#).~~ **This item has been retired from the NHS Data Model and Dictionary.**

***Classification:* The last live version of this item is available in the March 2019 release of the NHS Data Model and Dictionary.**

- a. First call
- b. ~~Routine recall~~
- c. ~~Non-routine/early recall advised~~
- d. Final non-responder
- e. ~~Recall suspended~~
- f. ~~Recall ceased – clinical reasons~~
- g. ~~Recall ceased – age reasons~~
- h. ~~Recall ceased – other reasons~~

Access to this version can be obtained by emailing information.standards@nhs.net with "NHS Data Model and Dictionary - Archive Request" in the email subject line.

SCREENING STATUS (RETIRED) renamed from SCREENING STATUS

Change to Attribute: Changed Name, status to Retired, Description

- Changed Name from Data_Dictionary.Attributes.S.Scr.SCREENING_STATUS to Retired.Data_Dictionary.Attributes.S.SCREENING_STATUS
- Retired SCREENING STATUS
- Changed Description

For enquiries about this Change Request, please email information.standards@nhs.net

