

# NHS Data Model and Dictionary



**Type:** Data Dictionary Change Notice  
**Reference:** 1698  
**Version No:** 1.0  
**Subject:** Retirement of Edifact Items  
**Effective Date:** Immediate  
**Reason for Change:** Retirement of out of date content  
**Publication Date:** 5 April 2019

## Background:

As part of the ongoing work to implement a new version of the NHS Data Model and Dictionary, a review of legacy and out of date data sets contained within the NHS Data Model and Dictionary has been carried out.

A number of data sets are out of date and have been identified for retirement from the NHS Data Model and Dictionary. Note that the relevant Data Set Change Notices (DSCNs) have been reviewed and withdrawn where appropriate.

This Data Dictionary Change Notice (DDCN) retires the items referencing Edifact Messages that are no longer used in the NHS Data Model and Dictionary.

To view a demonstration on "How to Read an NHS Data Model and Dictionary Change Request", visit the NHS Data Model and Dictionary help pages at: [https://www.datadictionary.nhs.uk/Flash\\_Files/changerequest.htm](https://www.datadictionary.nhs.uk/Flash_Files/changerequest.htm).

Note: if the web page does not open, please copy the link and paste into the web browser.

## Summary of changes:

### Diagrams

<a href="#">ADDRESS DIAGRAM</a>	Changed Diagram
<a href="#">APPOINTMENT DIAGRAM</a>	Changed Diagram
<a href="#">RADIOTHERAPY DIAGRAM</a>	Changed Diagram

### Supporting Information

<a href="#">DRUG TREATMENT (RETIRED)</a> renamed from <a href="#">DRUG TREATMENT</a>	Changed Name, Description, status to Retired
<a href="#">INFECTON CULTURE</a>	Changed Description
<a href="#">LAST DOSAGE DATE (RETIRED)</a> renamed from <a href="#">LAST DOSAGE DATE</a>	Changed Name, Description, status to Retired
<a href="#">LAST DOSAGE TIME (RETIRED)</a> renamed from <a href="#">LAST DOSAGE TIME</a>	Changed Name, Description, status to Retired
<a href="#">PATHOLOGY DEPARTMENT</a>	Changed Description

<a href="#">PATHOLOGY LABORATORY INVESTIGATION</a>	Changed Description
<a href="#">PATHOLOGY LABORATORY SERVICE REPORT</a>	Changed Description
<a href="#">PATHOLOGY RESULT DUE DATE (RETIRED)</a> renamed from <a href="#">PATHOLOGY RESULT DUE DATE</a>	Changed Name, Description, status to Retired
<a href="#">PATHOLOGY RESULT DUE TIME (RETIRED)</a> renamed from <a href="#">PATHOLOGY RESULT DUE TIME</a>	Changed Name, Description, status to Retired
<a href="#">RADIOLOGY DEPARTMENT</a>	Changed Description
<a href="#">RADIOLOGY INVESTIGATION PLAN (RETIRED)</a> renamed from <a href="#">RADIOLOGY INVESTIGATION PLAN</a>	Changed Name, Description, status to Retired
<a href="#">RADIOLOGY SERVICE REPORT (RETIRED)</a> renamed from <a href="#">RADIOLOGY SERVICE REPORT</a>	Changed Name, Description, status to Retired

### **Class Definitions**

<a href="#">ACTIVITY</a>	Changed Attributes
<a href="#">CLINICAL INTERVENTION</a>	Changed Attributes
<a href="#">CLINICAL INVESTIGATION RESULT ITEM</a>	Changed Attributes, Relationships
<a href="#">CLINICAL INVESTIGATION SERVICE PROVIDER (RETIRED)</a> renamed from <a href="#">CLINICAL INVESTIGATION SERVICE PROVIDER</a>	Changed Name, Attributes, Relationships, Description, status to Retired
<a href="#">DIAGNOSTIC TEST REQUEST</a>	Changed Attributes
<a href="#">PATHOLOGY INVESTIGATION TYPE (RETIRED)</a> renamed from <a href="#">PATHOLOGY INVESTIGATION TYPE</a>	Changed Name, Attributes, Relationships, Description, status to Retired
<a href="#">PLANNED ACTIVITY</a>	Changed Attributes
<a href="#">REFERENCE LIMIT (RETIRED)</a> renamed from <a href="#">REFERENCE LIMIT</a>	Changed Name, Attributes, Description, status to Retired
<a href="#">SAMPLE</a>	Changed Attributes, Description
<a href="#">SERVICE ORDER (RETIRED)</a> renamed from <a href="#">SERVICE ORDER</a>	Changed Name, Attributes, Relationships, Description, status to Retired

### **Attribute Definitions**

<a href="#">ACTIVITY DATE TYPE</a>	Changed Description
<a href="#">ACTIVITY TIME TYPE</a>	Changed Description
<a href="#">AMOUNT OF SAMPLE COLLECTED (RETIRED)</a> renamed from <a href="#">AMOUNT OF SAMPLE COLLECTED</a>	Changed Name, Description, status to Retired
<a href="#">ANATOMICAL ORIGIN OF SAMPLE (RETIRED)</a> renamed from <a href="#">ANATOMICAL ORIGIN OF SAMPLE</a>	Changed Name, Description, status to Retired
<a href="#">ARITHMETIC COMPARATOR (RETIRED)</a> renamed from <a href="#">ARITHMETIC COMPARATOR</a>	Changed Name, Description, status to Retired
<a href="#">ASSISTANCE ARRANGED (RETIRED)</a> renamed from <a href="#">ASSISTANCE ARRANGED</a>	Changed Name, Description, status to Retired
<a href="#">ASSISTANCE ARRANGEMENT RESPONSIBILITY (RETIRED)</a> renamed from <a href="#">ASSISTANCE ARRANGEMENT RESPONSIBILITY</a>	Changed Name, Description, status to Retired

<a href="#"><u>ASSISTANCE REQUIRED (RETIRED)</u></a> renamed from <a href="#"><u>ASSISTANCE REQUIRED</u></a>	Changed Name, Description, status to Retired
<a href="#"><u>ASSISTANCE TYPE (RETIRED)</u></a> renamed from <a href="#"><u>ASSISTANCE TYPE</u></a>	Changed Name, Description, status to Retired
<a href="#"><u>BREAST FEEDING INDICATOR (RETIRED)</u></a> renamed from <a href="#"><u>BREAST FEEDING INDICATOR</u></a>	Changed Name, Description, status to Retired
<a href="#"><u>CLINICAL INTERVENTION TYPE</u></a>	Changed Description
<a href="#"><u>CLINICAL SERVICE PROVIDER TYPE (RETIRED)</u></a> renamed from <a href="#"><u>CLINICAL SERVICE PROVIDER TYPE</u></a>	Changed Name, Description, status to Retired
<a href="#"><u>DEVIATING RESULT INDICATOR (RETIRED)</u></a> renamed from <a href="#"><u>DEVIATING RESULT INDICATOR</u></a>	Changed Name, Description, status to Retired
<a href="#"><u>DRUG ADMINISTRATION DURATION (RETIRED)</u></a> renamed from <a href="#"><u>DRUG ADMINISTRATION DURATION</u></a>	Changed Name, Description, status to Retired
<a href="#"><u>DRUG ADMINISTRATION STATUS (RETIRED)</u></a> renamed from <a href="#"><u>DRUG ADMINISTRATION STATUS</u></a>	Changed Name, Description, status to Retired
<a href="#"><u>DRUG DAYS SUPPLY (RETIRED)</u></a> renamed from <a href="#"><u>DRUG DAYS SUPPLY</u></a>	Changed Name, Description, status to Retired
<a href="#"><u>DRUG DOSAGE AND ADMIN SPECIFICATION (RETIRED)</u></a> renamed from <a href="#"><u>DRUG DOSAGE AND ADMIN SPECIFICATION</u></a>	Changed Name, Description, status to Retired
<a href="#"><u>DRUG IDENTIFICATION (RETIRED)</u></a> renamed from <a href="#"><u>DRUG IDENTIFICATION</u></a>	Changed Name, Description, status to Retired
<a href="#"><u>DRUG INFORMATION COMMENT (RETIRED)</u></a> renamed from <a href="#"><u>DRUG INFORMATION COMMENT</u></a>	Changed Name, Description, status to Retired
<a href="#"><u>DRUG INFORMATION TYPE (RETIRED)</u></a> renamed from <a href="#"><u>DRUG INFORMATION TYPE</u></a>	Changed Name, Description, status to Retired
<a href="#"><u>DRUG QUANTITY SUPPLIED (RETIRED)</u></a> renamed from <a href="#"><u>DRUG QUANTITY SUPPLIED</u></a>	Changed Name, Description, status to Retired
<a href="#"><u>EXPECTED DELAY BEFORE ACTIVITY UNIT (RETIRED)</u></a> renamed from <a href="#"><u>EXPECTED DELAY BEFORE ACTIVITY UNIT</u></a>	Changed Name, Description, status to Retired
<a href="#"><u>EXPECTED DELAY BEFORE ACTIVITY VALUE (RETIRED)</u></a> renamed from <a href="#"><u>EXPECTED DELAY BEFORE ACTIVITY VALUE</u></a>	Changed Name, Description, status to Retired
<a href="#"><u>INFECTION RISK (RETIRED)</u></a> renamed from <a href="#"><u>INFECTION RISK</u></a>	Changed Name, Description, status to Retired
<a href="#"><u>INVESTIGATION RESULT DATE</u></a>	Changed Description
<a href="#"><u>INVESTIGATION RESULT TEXT (RETIRED)</u></a> renamed from <a href="#"><u>INVESTIGATION RESULT TEXT</u></a>	Changed Name, Description, status to Retired
<a href="#"><u>INVESTIGATION RESULT TIME (RETIRED)</u></a> renamed from <a href="#"><u>INVESTIGATION RESULT TIME</u></a>	Changed Name, Description, status to Retired
<a href="#"><u>NUMERICAL VALUE (RETIRED)</u></a> renamed from <a href="#"><u>NUMERICAL VALUE</u></a>	Changed Name, Description, status to Retired
<a href="#"><u>PATHOLOGY INVESTIGATION PRIORITY (RETIRED)</u></a> renamed from <a href="#"><u>PATHOLOGY INVESTIGATION PRIORITY</u></a>	Changed Name, Description, status to Retired
<a href="#"><u>PATHOLOGY SPECIALTY (RETIRED)</u></a> renamed from <a href="#"><u>PATHOLOGY SPECIALTY</u></a>	Changed Name, Description, status to Retired
<a href="#"><u>PLANNED ACTIVITY DESCRIPTION (RETIRED)</u></a> renamed from <a href="#"><u>PLANNED ACTIVITY DESCRIPTION</u></a>	Changed Name, Description, status to Retired
<a href="#"><u>PLANNED ACTIVITY IDENTIFIER</u></a> renamed from <a href="#"><u>PLANNED ACTIVITY SEQUENCE NUMBER</u></a>	Changed Name, Description

<a href="#"><u>PROCEED IF MENSTRUAL PERIOD OVERDUE FLAG (RETIRED)</u></a> renamed from <a href="#"><u>PROCEED IF MENSTRUAL PERIOD OVERDUE FLAG</u></a>	Changed Name, Description, status to Retired
<a href="#"><u>RADIOLOGICAL RESULT VERIFIED DATE (RETIRED)</u></a> renamed from <a href="#"><u>RADIOLOGICAL RESULT VERIFIED DATE</u></a>	Changed Name, Description, status to Retired
<a href="#"><u>RADIOLOGICAL RESULT VERIFIED TIME (RETIRED)</u></a> renamed from <a href="#"><u>RADIOLOGICAL RESULT VERIFIED TIME</u></a>	Changed Name, Description, status to Retired
<a href="#"><u>RADIOLOGY APPOINTMENT REQUIRED (RETIRED)</u></a> renamed from <a href="#"><u>RADIOLOGY APPOINTMENT REQUIRED</u></a>	Changed Name, Description, status to Retired
<a href="#"><u>RADIOLOGY INVESTIGATION PLAN STATUS (RETIRED)</u></a> renamed from <a href="#"><u>RADIOLOGY INVESTIGATION PLAN STATUS</u></a>	Changed Name, Description, status to Retired
<a href="#"><u>RADIOLOGY INVESTIGATION PREV INDICATOR (RETIRED)</u></a> renamed from <a href="#"><u>RADIOLOGY INVESTIGATION PREV INDICATOR</u></a>	Changed Name, Description, status to Retired
<a href="#"><u>RADIOLOGY INVESTIGATION STATUS REASON (RETIRED)</u></a> renamed from <a href="#"><u>RADIOLOGY INVESTIGATION STATUS REASON</u></a>	Changed Name, Description, status to Retired
<a href="#"><u>RADIOLOGY PROCEDURE EARLIEST DATE (RETIRED)</u></a> renamed from <a href="#"><u>RADIOLOGY PROCEDURE EARLIEST DATE</u></a>	Changed Name, Description, status to Retired
<a href="#"><u>RADIOLOGY PROCEDURE LATEST DATE (RETIRED)</u></a> renamed from <a href="#"><u>RADIOLOGY PROCEDURE LATEST DATE</u></a>	Changed Name, Description, status to Retired
<a href="#"><u>RADIOLOGY PROCEDURE PRIORITY (RETIRED)</u></a> renamed from <a href="#"><u>RADIOLOGY PROCEDURE PRIORITY</u></a>	Changed Name, Description, status to Retired
<a href="#"><u>RADIOLOGY PROCEDURE REQUESTED DATE (RETIRED)</u></a> renamed from <a href="#"><u>RADIOLOGY PROCEDURE REQUESTED DATE</u></a>	Changed Name, Description, status to Retired
<a href="#"><u>RADIOLOGY PROCEDURE REQUESTED TIME (RETIRED)</u></a> renamed from <a href="#"><u>RADIOLOGY PROCEDURE REQUESTED TIME</u></a>	Changed Name, Description, status to Retired
<a href="#"><u>RADIOLOGY SERVICE ORDER ISSUE DATE (RETIRED)</u></a> renamed from <a href="#"><u>RADIOLOGY SERVICE ORDER ISSUE DATE</u></a>	Changed Name, Description, status to Retired
<a href="#"><u>RADIOLOGY SERVICE ORDER ISSUE TIME (RETIRED)</u></a> renamed from <a href="#"><u>RADIOLOGY SERVICE ORDER ISSUE TIME</u></a>	Changed Name, Description, status to Retired
<a href="#"><u>REFERENCE LIMIT LOWER QUANTITY (RETIRED)</u></a> renamed from <a href="#"><u>REFERENCE LIMIT LOWER QUANTITY</u></a>	Changed Name, Description, status to Retired
<a href="#"><u>REFERENCE LIMIT POPULATION DESCRIPTION (RETIRED)</u></a> renamed from <a href="#"><u>REFERENCE LIMIT POPULATION DESCRIPTION</u></a>	Changed Name, Description, status to Retired
<a href="#"><u>REFERENCE LIMIT UNIT OF MEASURE (RETIRED)</u></a> renamed from <a href="#"><u>REFERENCE LIMIT UNIT OF MEASURE</u></a>	Changed Name, Description, status to Retired
<a href="#"><u>REFERENCE LIMIT UPPER QUANTITY (RETIRED)</u></a> renamed from <a href="#"><u>REFERENCE LIMIT UPPER QUANTITY</u></a>	Changed Name, Description, status to Retired
<a href="#"><u>RESULT ITEM STATUS (RETIRED)</u></a> renamed from <a href="#"><u>RESULT ITEM STATUS</u></a>	Changed Name, Description, status to Retired
<a href="#"><u>SAMPLE COLLECTION DATE</u></a>	Changed Description
<a href="#"><u>SAMPLE COLLECTION PERIOD END DATE (RETIRED)</u></a> renamed from <a href="#"><u>SAMPLE COLLECTION PERIOD END DATE</u></a>	Changed Name, Description, status to Retired
<a href="#"><u>SAMPLE COLLECTION PERIOD END TIME (RETIRED)</u></a> renamed from <a href="#"><u>SAMPLE COLLECTION PERIOD END TIME</u></a>	Changed Name, Description, status to Retired

<a href="#"><u>SAMPLE COLLECTION PROCEDURE (RETIRED)</u></a> renamed from <a href="#"><u>SAMPLE COLLECTION PROCEDURE</u></a>	Changed Name, Description, status to Retired
<a href="#"><u>SAMPLE COLLECTION TIME</u></a>	Changed Description
<a href="#"><u>SAMPLE HANDLING WARNING (RETIRED)</u></a> renamed from <a href="#"><u>SAMPLE HANDLING WARNING</u></a>	Changed Name, Description, status to Retired
<a href="#"><u>SAMPLE IDENTIFIER FOR PROVIDER (RETIRED)</u></a> renamed from <a href="#"><u>SAMPLE IDENTIFIER FOR PROVIDER</u></a>	Changed Name, Description, status to Retired
<a href="#"><u>SAMPLE IDENTIFIER FOR REQUESTER (RETIRED)</u></a> renamed from <a href="#"><u>SAMPLE IDENTIFIER FOR REQUESTER</u></a>	Changed Name, Description, status to Retired
<a href="#"><u>SAMPLE RECEIPT DATE</u></a>	Changed Description
<a href="#"><u>SAMPLE RECEIPT TIME (RETIRED)</u></a> renamed from <a href="#"><u>SAMPLE RECEIPT TIME</u></a>	Changed Name, Description, status to Retired
<a href="#"><u>SAMPLE TYPE (RETIRED)</u></a> renamed from <a href="#"><u>SAMPLE TYPE</u></a>	Changed Name, Description, status to Retired
<a href="#"><u>SAMPLE UNIT OF MEASURE (RETIRED)</u></a> renamed from <a href="#"><u>SAMPLE UNIT OF MEASURE</u></a>	Changed Name, Description, status to Retired
<a href="#"><u>SEDATION REQUIRED INDICATOR (RETIRED)</u></a> renamed from <a href="#"><u>SEDATION REQUIRED INDICATOR</u></a>	Changed Name, Description, status to Retired
<a href="#"><u>SERVICE ORDER IDENTIFIER (RETIRED)</u></a> renamed from <a href="#"><u>SERVICE ORDER IDENTIFIER</u></a>	Changed Name, Description, status to Retired
<a href="#"><u>TRANSPORT TYPE FOR SAMPLE COLLECTED (RETIRED)</u></a> renamed from <a href="#"><u>TRANSPORT TYPE FOR SAMPLE COLLECTED</u></a>	Changed Name, Description, status to Retired
<a href="#"><u>UNIT OF MEASUREMENT</u></a>	Changed Description

**Date:** 5 April 2019

**Sponsor:** Nicholas Oughtibridge, Head of Business and Operational Delivery, NHS Digital

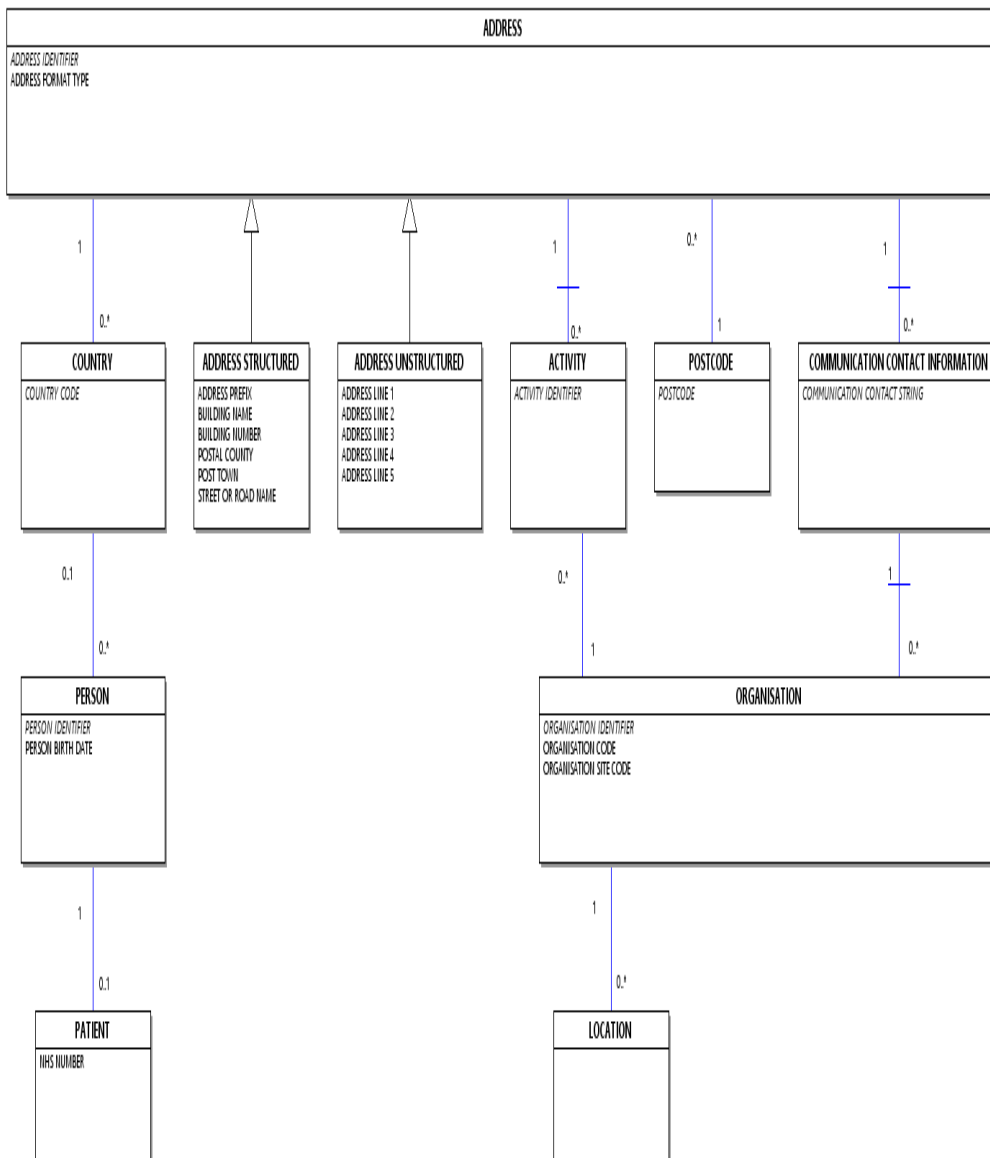
**Note:** New text is shown with a blue background. Deleted text is crossed out. Retired text is shown in grey. Within the Diagrams deleted classes and relationships are red, changed items are blue and new items are green.

---

## ADDRESS DIAGRAM

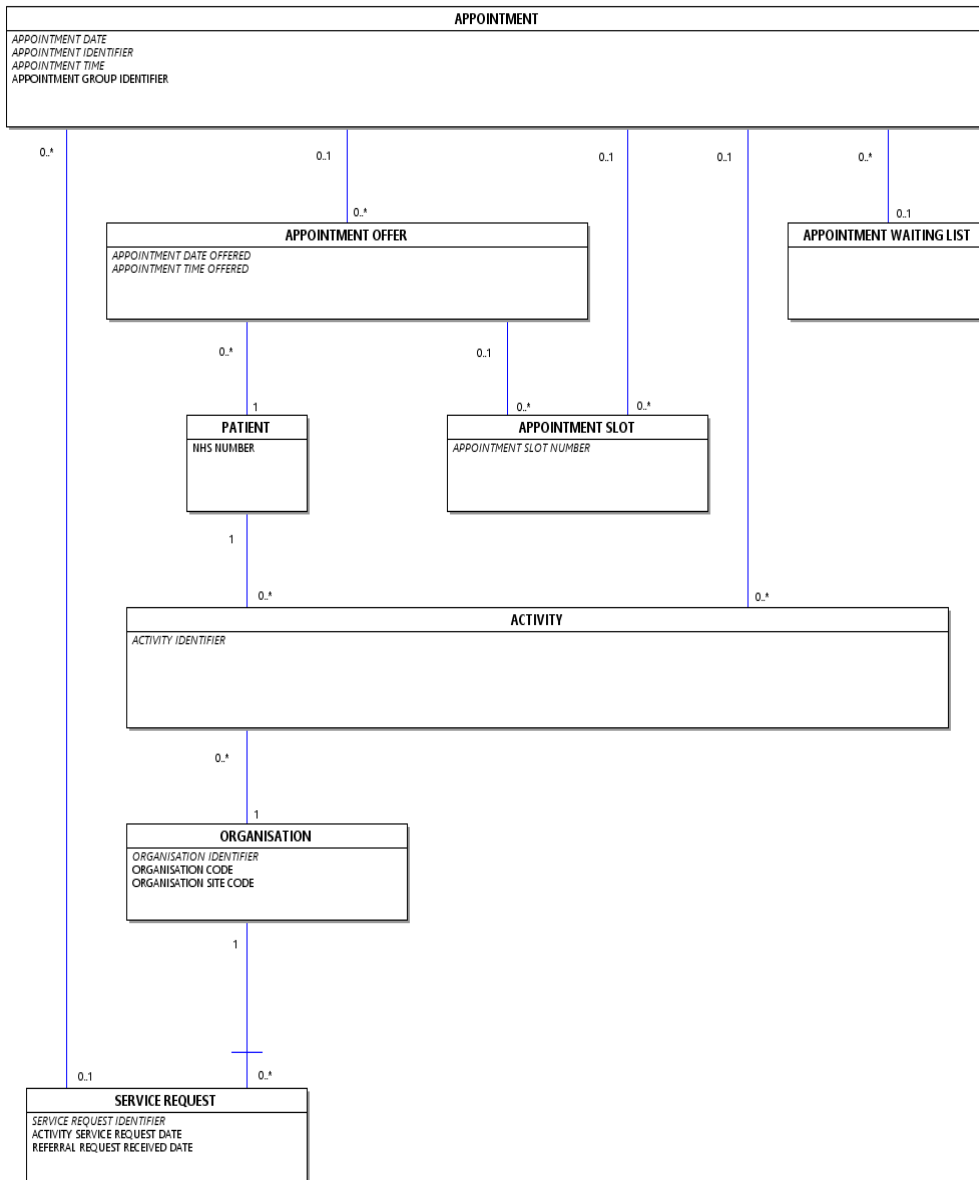
---

Change to Diagram: Changed Diagram



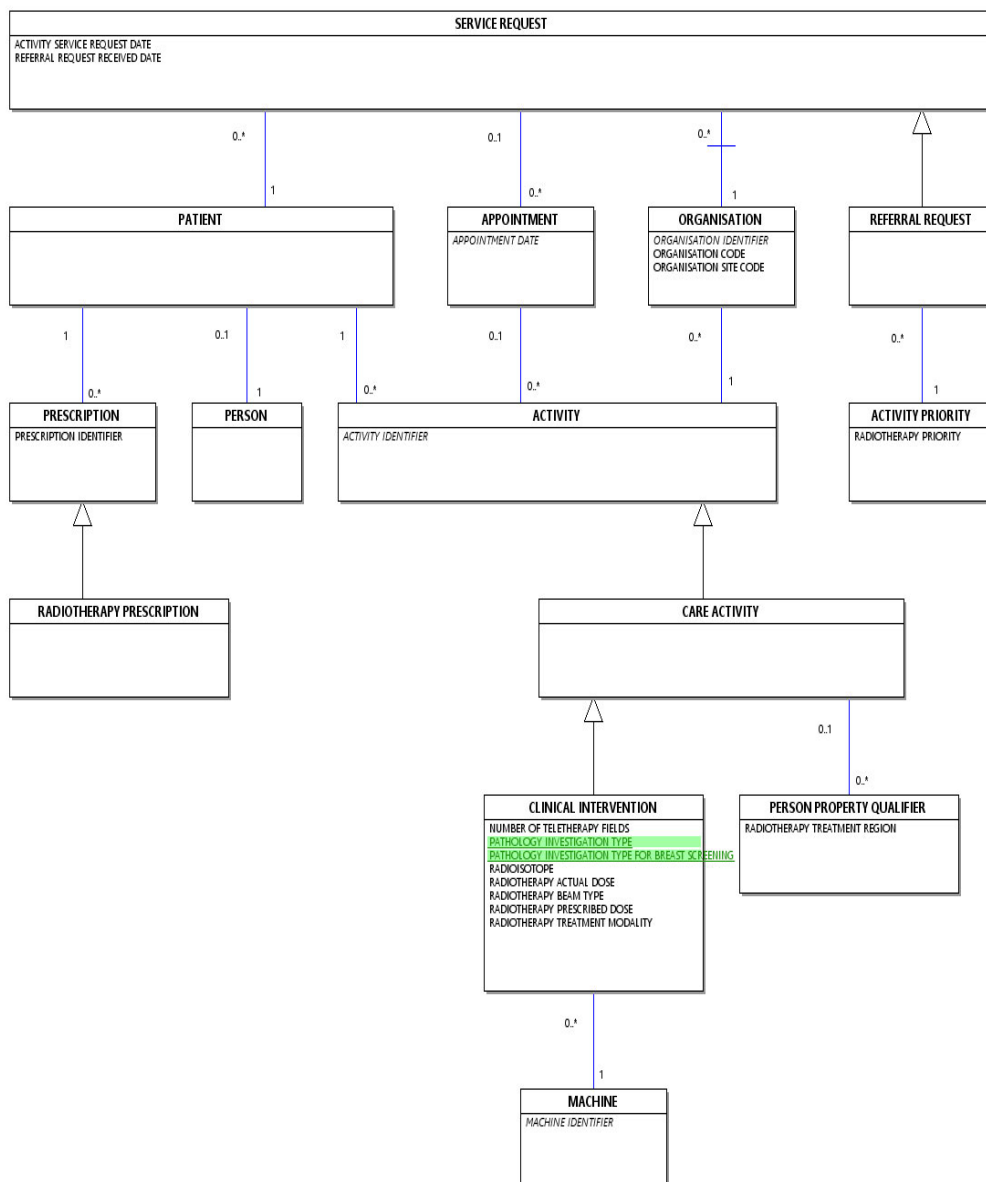
# APPOINTMENT DIAGRAM

Change to Diagram: Changed Diagram



## RADIOTHERAPY DIAGRAM

Change to Diagram: Changed Diagram



## DRUG TREATMENT (RETIRED) renamed from DRUG TREATMENT

Change to Supporting Information: Changed Name, Description, status to Retired

[Drug Treatment](#) is a [CLINICAL INTERVENTION](#). This item has been retired from the NHS Data Model and Dictionary.

Information about a [PATIENT](#)'s previous, planned or current treatment, as part of a substance or chemical compound for the prevention, alleviation or treatment of a medical condition or to which the [PATIENT](#) has a hypersensitivity. The last live version of this item is available in the March 2019 release of the NHS Data Model and Dictionary.

References: The version 1.1 NHS Standard EDIFACT Messages for Pathology Requests and Reports, 2004



~~The Version 1.0 Trial NHS Standard EDIFACT Messages for GP Hospital Communications – 17.5.95~~  
**Access to this version can be obtained by emailing [information.standards@nhs.net](mailto:information.standards@nhs.net) with "NHS Data Model and Dictionary - Archive Request" in the email subject line.**

---

#### DRUG TREATMENT (RETIRED) renamed from DRUG TREATMENT

---

Change to Supporting Information: Changed Name, Description, status to Retired

- Changed Name from Data\_Dictionary.NHS\_Business\_Definitions.D.Drug\_Treatment to Retired.Data\_Dictionary.NHS\_Business\_Definitions.D.Drug\_Treatment
- Changed Description
- Retired Drug Treatment

---

#### INFECTION CULTURE

---

Change to Supporting Information: Changed Description

An [Infection Culture](#) is a [Clinical Investigation](#).

~~An [Infection Culture](#) is a [Pathology Laboratory Investigation](#) which tests for microbial growth in a [SAMPLE](#) of bodily fluid (such as urine, blood or cerebrospinal fluid) taken from by a [PATIENT](#). An [Infection Culture](#) is a test that checks for microbial growth in a [SAMPLE](#) of bodily fluid (such as urine, blood or cerebrospinal fluid) taken from a [PATIENT](#).~~

---

#### LAST DOSAGE DATE (RETIRED) renamed from LAST DOSAGE DATE

---

Change to Supporting Information: Changed Name, Description, status to Retired

~~[Last Dosage Date](#) is an [ACTIVITY DATE TIME](#). This item has been retired from the NHS Data Model and Dictionary.~~

~~The date of the last dose of a [Drug Treatment](#). The last live version of this item is available in the March 2019 release of the NHS Data Model and Dictionary.~~

#### References:

~~The Version 1.1 NHS Standard EDIFACT Messages for Pathology Requests and Reports, 2001~~

~~The Version 1.0 Trial NHS Standard EDIFACT Messages for GP Hospital Communications – 17.5.95~~  
**Access to this version can be obtained by emailing [information.standards@nhs.net](mailto:information.standards@nhs.net) with "NHS Data Model and Dictionary - Archive Request" in the email subject line.**

---

#### LAST DOSAGE DATE (RETIRED) renamed from LAST DOSAGE DATE

---

Change to Supporting Information: Changed Name, Description, status to Retired

- Changed Name from Data\_Dictionary.NHS\_Business\_Definitions.L.Last\_Dosage\_Date to Retired.Data\_Dictionary.NHS\_Business\_Definitions.L.Last\_Dosage\_Date

- Changed Description
- Retired Last Dosage Date

---

#### LAST DOSAGE TIME (RETIRED)\_ renamed from LAST DOSAGE TIME

---

Change to Supporting Information: Changed Name, Description, status to Retired

[Last Dosage Time](#) is an [ACTIVITY DATE TIME](#). This item has been retired from the NHS Data Model and Dictionary.

The time of the last dose of a [Drug Treatment](#). The last live version of this item is available in the March 2019 release of the NHS Data Model and Dictionary.

#### References:

The Version 1.1 NHS Standard EDIFACT Messages for Pathology Requests and Reports, 2001  
The Version 1.0 Trial NHS Standard EDIFACT Messages for GP Hospital Communications - 17.5.95  
Access to this version can be obtained by emailing [information.standards@nhs.net](mailto:information.standards@nhs.net) with "NHS Data Model and Dictionary - Archive Request" in the email subject line.

---

#### LAST DOSAGE TIME (RETIRED)\_ renamed from LAST DOSAGE TIME

---

Change to Supporting Information: Changed Name, Description, status to Retired

- Changed Name from Data\_Dictionary.NHS\_Business\_Definitions.L.Last\_Dosage\_Time to Retired.Data\_Dictionary.NHS\_Business\_Definitions.L.Last\_Dosage\_Time
- Changed Description
- Retired Last Dosage Time

---

#### PATHOLOGY DEPARTMENT

---

Change to Supporting Information: Changed Description

A [Pathology Department](#) is a [Department](#).

A [Pathology Department](#) is a unit which is managed as a separate entity by a [CONSULTANT](#) or non-medical scientist of equivalent standing which deals with [DIAGNOSTIC TEST REQUESTS](#) for pathology.

The [Pathology Department](#) may consist of one or more [Pathology Laboratories](#) that may be located on one or more sites and process investigations within more than one [PATHOLOGY SPECIALTY](#). The [Pathology Department](#) may consist of one or more [Pathology Laboratories](#) that may be located on one or more sites.

A [Pathology Department](#) may carry out [Post Mortems](#).

This item is not referenced in a data set in the NHS Data Model and Dictionary. It has been retained to ensure the modelling is consistent.

## PATHOLOGY LABORATORY INVESTIGATION

---

Change to Supporting Information: Changed Description

A [Pathology Laboratory Investigation](#) is a [Clinical Investigation](#).

~~A [Pathology Laboratory Investigation](#) is a single (laboratory) service resulting from a [DIAGNOSTIC TEST REQUEST](#), to be carried out in respect of a specified subject of investigation that leads to the production of one or more results.~~  
A [Pathology Laboratory Investigation](#) is a single (Laboratory) service resulting from a [DIAGNOSTIC TEST REQUEST](#), to be carried out in respect of a specified subject of investigation that leads to the production of one or more results.

References: ~~The version 1.1 NHS Standard EDIFACT Messages for Pathology Requests and Reports, 2004~~This item is not referenced in a data set in the NHS Data Model and Dictionary. It has been retained to ensure the modelling is consistent.

---

## PATHOLOGY LABORATORY SERVICE REPORT

---

Change to Supporting Information: Changed Description

[Pathology Laboratory Service Report](#) is a [SERVICE REPORT](#). A [Pathology Laboratory Service Report](#) is a [SERVICE REPORT](#).

~~A single [Pathology Laboratory Service Report](#), as it is issued by a laboratory service provider.~~  
A [Pathology Laboratory Service Report](#) is a report relating to a [CLINICAL INVESTIGATION RESULT ITEM](#) issued by a [Laboratory](#).

---

## PATHOLOGY RESULT DUE DATE (RETIRED) renamed from PATHOLOGY RESULT DUE DATE

---

Change to Supporting Information: Changed Name, Description, status to Retired

[Pathology Result Due Date](#) is an [ACTIVITY DATE TIME](#). **This item has been retired from the NHS Data Model and Dictionary.**

~~The date by which a requester wishes to receive the result(s) of a [Pathology Laboratory Investigation](#).~~  
**The last live version of this item is available in the March 2019 release of the NHS Data Model and Dictionary.**

References:

~~The Version 1.1 NHS Standard EDIFACT Messages for Pathology Requests and Reports, 2004~~**Access to this version can be obtained by emailing [information.standards@nhs.net](mailto:information.standards@nhs.net) with "NHS Data Model and Dictionary - Archive Request" in the email subject line.**

---

## PATHOLOGY RESULT DUE DATE (RETIRED) renamed from PATHOLOGY RESULT DUE DATE

---

Change to Supporting Information: Changed Name, Description, status to Retired

- Changed Name from Data\_Dictionary.NHS\_Business\_Definitions.P.Pathology\_Result\_Due\_Date to Retired.Data\_Dictionary.NHS\_Business\_Definitions.P.Pathology\_Result\_Due\_Date
- Changed Description
- Retired Pathology Result Due Date

---

**PATHOLOGY RESULT DUE TIME (RETIRED)** renamed from **PATHOLOGY RESULT DUE TIME**

---

Change to Supporting Information: Changed Name, Description, status to Retired

[Pathology Result Due Time](#) is an [ACTIVITY DATE TIME](#). This item has been retired from the NHS Data Model and Dictionary.

The time by which a requester wishes to receive the result(s) of a [Pathology Laboratory Investigation](#). The last live version of this item is available in the March 2019 release of the NHS Data Model and Dictionary.

References:

The Version 1.1 NHS Standard EDIFACT Messages for Pathology Requests and Reports, 2004 Access to this version can be obtained by emailing [information.standards@nhs.net](mailto:information.standards@nhs.net) with "NHS Data Model and Dictionary - Archive Request" in the email subject line.

---

**PATHOLOGY RESULT DUE TIME (RETIRED)** renamed from **PATHOLOGY RESULT DUE TIME**

---

Change to Supporting Information: Changed Name, Description, status to Retired

- Changed Name from Data\_Dictionary.NHS\_Business\_Definitions.P.Pathology\_Result\_Due\_Time to Retired.Data\_Dictionary.NHS\_Business\_Definitions.P.Pathology\_Result\_Due\_Time
- Changed Description
- Retired Pathology Result Due Time

---

**RADIOLOGY DEPARTMENT**

---

Change to Supporting Information: Changed Description

A [Radiology Department](#) is a [Department](#).

A [Radiology Department](#) is a unit based in one or more [LOCATIONS](#) which is managed as a separate entity by a [CONSULTANT](#) or non-medical scientist of equivalent standing in the [MAIN SPECIALTY](#) of radiology which deals with requests for radiological or isotope procedures.

A [Radiology Department](#) may produce [Radiology Investigation Plans](#), perform [Imaging or Radiodiagnostic Events](#) and provide radiology investigation result items. A Radiology Department may perform [Imaging or Radiodiagnostic Events](#) and provide radiology [CLINICAL INVESTIGATION RESULT ITEMS](#).

This item is not referenced in a data set in the NHS Data Model and Dictionary. It has been retained to ensure the modelling is consistent.

---

**RADIOLOGY INVESTIGATION PLAN (RETIRED)** renamed from RADIOLOGY INVESTIGATION PLAN

---

Change to Supporting Information: Changed Name, Description, status to Retired

[Radiology Investigation Plan](#) is a [PLANNED ACTIVITY](#). This item has been retired from the NHS Data Model and Dictionary.

A plan made by a radiology service provider related to the undertaking of a radiology investigation on a [PATIENT](#). The last live version of this item is available in the March 2019 release of the NHS Data Model and Dictionary.

References:

The Version 1.0 Trial NHS Standard EDIFACT Messages for Radiology Requests and Reports, 14.3.95. Access to this version can be obtained by emailing [information.standards@nhs.net](mailto:information.standards@nhs.net) with "NHS Data Model and Dictionary - Archive Request" in the email subject line.

---

**RADIOLOGY INVESTIGATION PLAN (RETIRED)** renamed from RADIOLOGY INVESTIGATION PLAN

---

Change to Supporting Information: Changed Name, Description, status to Retired

- Changed Name from Data\_Dictionary.NHS\_Business\_Definitions.R.Radiology\_Investigation\_Plan to Retired.Data\_Dictionary.NHS\_Business\_Definitions.R.Radiology\_Investigation\_Plan
- Changed Description
- Retired Radiology Investigation Plan

---

**RADIOLOGY SERVICE REPORT (RETIRED)** renamed from RADIOLOGY SERVICE REPORT

---

Change to Supporting Information: Changed Name, Description, status to Retired

A [Radiology Service Report](#) is a [SERVICE REPORT](#). This item has been retired from the NHS Data Model and Dictionary.

A [Radiology Service Report](#) is the report of the results of, or plans, for radiology [Clinical Investigations](#) pertaining to a single [PATIENT](#), submitted by a radiology service provider to a radiology service requester. The last live version of this item is available in the March 2019 release of the NHS Data Model and Dictionary.

Access to this version can be obtained by emailing [information.standards@nhs.net](mailto:information.standards@nhs.net) with "NHS Data Model and Dictionary - Archive Request" in the email subject line.

---

**RADIOLOGY SERVICE REPORT (RETIRED)** renamed from RADIOLOGY SERVICE REPORT

---

---

Change to Supporting Information: Changed Name, Description, status to Retired

- Changed Name from Data\_Dictionary.NHS\_Business\_Definitions.R.Radiology\_Service\_Report to Retired.Data\_Dictionary.NHS\_Business\_Definitions.R.Radiology\_Service\_Report
- Changed Description
- Retired Radiology Service Report

---

## ACTIVITY

---

Change to Class: Changed Attributes

*Attributes of this Class are:*

K           ACTIVITY IDENTIFIER  
~~EXPECTED DELAY BEFORE ACTIVITY UNIT~~  
~~EXPECTED DELAY BEFORE ACTIVITY VALUE~~

---

## CLINICAL INTERVENTION

---

Change to Class: Changed Attributes

*Attributes of this Class are:*

ABDOMINAL XRAY PERFORMED REASON  
ABDOMINAL XRAY PERFORMED TO INVESTIGATE ABDOMINAL SIGNS INDICATOR  
ABLATIVE THERAPY TYPE  
ACCIDENT AND EMERGENCY INVESTIGATION  
ACCIDENT AND EMERGENCY TREATMENT  
ADDITIONAL UNPLANNED PROCEDURE REQUIRED INDICATOR  
ADJUNCTIVE THERAPY TYPE  
ANAESTHETIC METHOD TYPE FOR DIALYSIS ACCESS CONSTRUCTION  
ANAESTHETIC TYPE FOR JOINT REPLACEMENT  
ANTI CANCER REGIMEN NUMBER  
ANTIRETROVIRAL THERAPY DRUG REGIMEN GROUP CODE  
ANTIRETROVIRAL THERAPY HOME DELIVERY INDICATOR  
ARTERIOVENOUS GRAFT MATERIAL TYPE  
ARTHROPLASTY REVISION TYPE FOR HIP KNEE AND ANKLE REPLACEMENT  
ARTHROPLASTY REVISION TYPE FOR SHOULDER AND ELBOW REPLACEMENT  
ASA PHYSICAL STATUS CLASSIFICATION SYSTEM CODE  
ASSOCIATED PROCEDURE TYPE FOR ANKLE REPLACEMENT  
BIOLOGICAL GLENOID RESURFACING TYPE FOR SHOULDER REPLACEMENT  
BIOPSY TYPE FOR CENTRAL NERVOUS SYSTEM TUMOURS  
BLOOD FLOW RATE  
BLOOD TRANSFUSION PRODUCT TYPE  
BLOOD TRANSFUSION TYPE  
BLOOD TRANSFUSION UNITS TRANSFUSED  
BONE GRAFT INDICATOR FOR JOINT REPLACEMENT  
BONE GRAFT SOURCE FOR JOINT REPLACEMENT  
BONE GRAFT STRUCTURE FOR JOINT REPLACEMENT

BONE GRAFT TYPE FOR REVISION ANKLE REPLACEMENT  
BRACHYTHERAPY TYPE  
BREAST ASSESSMENT OUTCOME  
BREAST SCREENING TEST OUTCOME  
CANCER CARE SETTING FOR TREATMENT  
CANCER IMAGING MODALITY  
CANCER IMAGING OUTCOME  
CANCER TREATMENT MODALITY  
CARDIOPULMONARY EXERCISE TEST TYPE  
CEMENT REMOVAL INDICATOR FOR JOINT REPLACEMENT  
CHEMICAL THROMBOPROPHYLAXIS REGIME TYPE FOR JOINT REPLACEMENT  
CHEMO RADIATION INDICATOR  
CHEMOTHERAPY ACTUAL DOSE  
CHEST DRAIN IN SITU INDICATOR  
CLINICAL INTERVENTION TEXT STRING  
CLINICAL INTERVENTION TYPE  
COLPOSCOPY PRIME PROCEDURE TYPE  
CO MORBIDITY ADJUSTMENT INDICATOR  
COMPLICATION TYPE FOR RENAL DIALYSIS ACCESS  
COMPONENT REMOVAL INDICATOR FOR JOINT REPLACEMENT  
COMPUTER GUIDED SURGERY INDICATOR FOR JOINT REPLACEMENT  
CONTINUOUS INFUSION OF PULMONARY VASODILATOR RECEIVED INDICATOR  
CONTINUOUS POSITIVE AIRWAY PRESSURE DELIVERY MODE  
CONTRACEPTION METHOD STATUS  
CYTOLOGY SCREENING ACTION TYPE  
DEINFIBULATION UNDERTAKEN REASON  
DELIVERED IN WATER INDICATOR  
DELIVERY INSTRUMENT TYPE  
DIEPOXYBUTANE TEST RESULT  
~~DRUG ADMINISTRATION DURATION~~  
~~DRUG ADMINISTRATION STATUS~~  
~~DRUG DAYS SUPPLY~~  
~~DRUG DOSAGE AND ADMIN SPECIFICATION~~  
~~DRUG IDENTIFICATION~~  
~~DRUG INFORMATION COMMENT~~  
~~DRUG INFORMATION TYPE~~  
~~DRUG QUANTITY SUPPLIED~~  
DRUG REGIMEN ACRONYM  
DRUG TREATMENT INTENT  
ENDOSCOPIC OR RADIOLOGICAL COMPLICATION TYPE  
ENDOSCOPIC PROCEDURE TYPE  
ENTERAL FEEDING METHOD  
ENTERAL FEED TYPE GIVEN  
EXCISION TYPE FOR CENTRAL NERVOUS SYSTEM TUMOURS  
FIRST ANTIRETROVIRAL THERAPY IN THE UNITED KINGDOM INDICATOR

FIRST DEFINITIVE TREATMENT PROVIDED  
FIXATION TYPE FOR ELBOW REPLACEMENT  
FIXATION TYPE FOR SHOULDER REPLACEMENT  
FORMULA MILK OR MILK FORTIFIER TYPE  
FRACTION NUMBER  
GERMLINE GENETIC TEST TYPE OFFERED  
HIP JOINT SURGERY PATIENT POSITION  
HUMAN PAPILLOMAVIRUS VACCINATION DOSE GIVEN  
IMAGE GUIDED SURGERY INDICATOR  
IMAGING ANATOMICAL SITE  
IMAGING OR RADIODIAGNOSTIC EVENT INDICATION CODE FOR RENAL CARE  
INFECTION CULTURE TEST INDICATOR  
INTERVENTION SESSION TYPE FOR STOP SMOKING  
INTERVENTION SETTING TYPE FOR STOP SMOKING  
INTRAPARTUM ANTIBIOTICS GIVEN INDICATOR  
INTRAVESICAL CHEMOTHERAPY RECEIVED INDICATOR  
INTRAVESICAL IMMUNOTHERAPY RECEIVED INDICATOR  
JOINT REPLACEMENT PATIENT PROCEDURE PERFORMED INDICATOR  
JOINT REPLACEMENT REVISION REASON CODE FOR ANKLE  
JOINT REPLACEMENT REVISION REASON CODE FOR ELBOW  
JOINT REPLACEMENT REVISION REASON CODE FOR HIP  
JOINT REPLACEMENT REVISION REASON CODE FOR KNEE  
JOINT REPLACEMENT REVISION REASON CODE FOR SHOULDER  
KIDNEY TRANSPLANTED CODE  
LABOUR FIRST STAGE LENGTH  
LABOUR OR DELIVERY ONSET METHOD  
LABOUR SECOND STAGE LENGTH  
LAPAROTOMY FOR NECROTISING ENTEROCOLITIS INDICATION CODE  
LINER REMOVAL INDICATOR FOR JOINT REPLACEMENT  
LIVER CANCER SURVEILLANCE SCAN INDICATOR  
LIVER SURGERY PERFORMED TYPE  
LIVER TRANSARTERIAL EMBOLISATION MATERIAL INJECTION TYPE  
LIVER TRANSARTERIAL EMBOLISATION OF HEPATOCELLULAR CARCINOMA  
INDICATOR  
MARGIN INVOLVED INDICATION CODE  
MATERNAL CRITICAL INCIDENT TYPE  
MECHANICAL THROMBOPROPHYLAXIS REGIME TYPE FOR JOINT REPLACEMENT  
MECONIUM PRESENT IN LIQUOR INDICATOR  
MINIMALLY INVASIVE SURGERY INDICATOR FOR JOINT REPLACEMENT  
MORE THAN THREE RECTAL WASHOUTS RECEIVED INDICATOR  
NEOADJUVANT THERAPY INDICATOR  
NEONATAL RESUSCITATION METHOD FOR NATIONAL NEONATAL DATA SET  
NEPHRECTOMY TYPE  
NEURODEVELOPMENTAL ASSESSMENT ALREADY TAKEN INDICATOR  
NEWBORN HEARING SCREENING TEST TYPE



NITRIC OXIDE GIVEN INDICATOR  
NUMBER OF TELETHERAPY FIELDS  
OBSERVATION SCHEME IN USE  
OPPORTUNISTIC SCREENING TYPE  
ORGAN OR TISSUE UNSUITABLE ORGAN CODE RENAL TRANSPLANT  
PARENTAL CONSENT TO ADMINISTER VITAMIN K INDICATOR  
PARENTAL CONSENT TO POST MORTEM INDICATOR  
PARENTERAL NUTRITION RECEIVED INDICATOR  
~~PATHOLOGY INVESTIGATION PRIORITY~~  
PATHOLOGY INVESTIGATION TYPE  
PATHOLOGY INVESTIGATION TYPE FOR BREAST SCREENING  
PATHOLOGY RESULT REPORTED DATE  
PATIENT DIAGNOSIS TREATMENT PROVIDED INDICATION CODE FOR SEXUAL  
HEALTH SERVICE  
PATIENT PROCEDURE PERFORMED INDICATOR  
PATIENT PROCEDURE TYPE FOR PRIMARY ANKLE REPLACEMENT  
PATIENT PROCEDURE TYPE FOR PRIMARY ELBOW REPLACEMENT  
PATIENT PROCEDURE TYPE FOR PRIMARY HIP REPLACEMENT  
PATIENT PROCEDURE TYPE FOR PRIMARY KNEE REPLACEMENT  
PATIENT PROCEDURE TYPE FOR PRIMARY SHOULDER REPLACEMENT  
PATIENT PROCEDURE TYPE FOR REVISION ANKLE REPLACEMENT  
PATIENT PROCEDURE TYPE FOR REVISION ELBOW REPLACEMENT  
PATIENT PROCEDURE TYPE FOR REVISION HIP REPLACEMENT  
PATIENT PROCEDURE TYPE FOR REVISION KNEE REPLACEMENT  
PATIENT PROCEDURE TYPE FOR REVISION SHOULDER REPLACEMENT  
PATIENT SPECIFIC INSTRUMENTS INDICATOR FOR SHOULDER OR KNEE  
REPLACEMENT  
PATIENT TREATED TO CHILDRENS CANCER AND LEUKAEMIA GROUP  
GUIDELINES INDICATOR  
PERITONEAL DIALYSIS CATHETER INSERTION TECHNIQUE  
PERITONEAL DIALYSIS CATHETER TYPE  
PERITONEAL DIALYSIS TREATMENT REGIME  
PLANE OF SURGICAL EXCISION TYPE  
PLANNED TREATMENT CHANGE REASON  
POST MORTEM CARRIED OUT INDICATOR  
POST MORTEM CONFIRMED NECROTISING ENTEROCOLITIS DIAGNOSIS  
INDICATOR  
POST MORTEM TYPE  
PRETREATMENT PROSTATE BIOPSY TECHNIQUE TYPE  
PREVIOUS BONY INFECTION INDICATOR OF TIBIA OR HINDFOOT FOR ANKLE  
REPLACEMENT  
PREVIOUS FRACTURE OF INDEX JOINT INDICATOR FOR ANKLE REPLACEMENT  
PREVIOUS INDEX JOINT SURGERY TYPE FOR ANKLE REPLACEMENT  
PREVIOUS SURGERY TYPE FOR SHOULDER REPLACEMENT  
PRIMARY INDUCTION CHEMOTHERAPY FAILURE INDICATOR  
PRINCIPAL DIAGNOSTIC IMAGING TYPE

PROCEDURE RENAL DIALYSIS ACCESS REPAIR OR REVISION TYPE  
PROCEDURE SCHEME IN USE  
PROCEDURE SIDE RENAL DIALYSIS ACCESS CONSTRUCTION CODE  
PROCEDURE SITE RENAL DIALYSIS ACCESS CONSTRUCTION CODE  
PROSTATE NERVE SPARING SURGERY TYPE  
RADICAL PROSTATECTOMY MARGIN STATUS  
RADIOISOTOPE  
RADIOTHERAPY ACTUAL DOSE  
RADIOTHERAPY BEAM TYPE  
RADIOTHERAPY INTENT  
RADIOTHERAPY PRESCRIBED DOSE  
RADIOTHERAPY TREATMENT MODALITY  
REGIONAL ANAESTHETIC TECHNIQUE FOR CANCER  
RELAPSE METHOD DETECTION TYPE  
REMOVAL REASON TYPE FOR DIALYSIS ACCESS  
RENAL DIALYSIS ACCESS TYPE  
RENAL DIALYSIS SCHEDULE TYPE  
RENAL TRANSPLANT FAILURE CAUSE CODE  
RENAL TREATMENT MODALITY CHANGE REASON CODE  
RENAL TREATMENT MODALITY CODE  
RENAL TREATMENT PRIMARY SUPERVISION CODE  
REPLOGLE TUBE IN SITU INDICATOR  
RESPIRATORY SUPPORT DEVICE TYPE FOR NATIONAL NEONATAL DATA SET  
RESPIRATORY SUPPORT MODE FOR NATIONAL NEONATAL DATA SET  
RESULT SENT DIRECT  
RETINOPATHY OF PREMATURITY SCREENING OUTCOME STATUS CODE  
REVISION PROCEDURE TYPE FOR ANKLE REPLACEMENT  
REVISION PROCEDURE TYPE FOR ELBOW REPLACEMENT  
REVISION PROCEDURE TYPE FOR HIP REPLACEMENT  
REVISION PROCEDURE TYPE FOR KNEE REPLACEMENT  
REVISION PROCEDURE TYPE FOR SHOULDER REPLACEMENT  
ROTATOR CUFF CONDITION FOR SHOULDER REPLACEMENT  
ROTATOR CUFF REPAIRED INDICATOR FOR SHOULDER REPLACEMENT  
ROTATOR CUFF REPAIR TYPE FOR SHOULDER REPLACEMENT  
SARCOMA SURGICAL MARGIN  
SENTINEL LYMPH NODE BIOPSY TYPE  
SIGNIFICANT MATERNAL PYREXIA IN LABOUR INDICATOR  
STEM CELL INFUSION DONOR TYPE  
STEM CELL INFUSION SOURCE CODE  
STEM CELL TRANSPLANT CONDITIONING REGIMEN  
STEROIDS GIVEN DURING PREGNANCY TO MATURE FETAL LUNGS INDICATOR  
STOMA PRESENT INDICATOR  
SURFACTANT GIVEN INDICATOR  
SURGICAL ACCESS TYPE  
SURGICAL APPROACH FOR PRIMARY HIP REPLACEMENT

SURGICAL APPROACH FOR PRIMARY KNEE REPLACEMENT  
 SURGICAL APPROACH FOR PRIMARY OR REVISION ANKLE REPLACEMENT  
 SURGICAL APPROACH FOR PRIMARY OR REVISION ELBOW REPLACEMENT  
 SURGICAL APPROACH FOR PRIMARY OR REVISION SHOULDER REPLACEMENT  
 SURGICAL APPROACH FOR REVISION HIP REPLACEMENT  
 SURGICAL APPROACH FOR REVISION KNEE REPLACEMENT  
 SURGICAL COMPLICATION TYPE  
 SURGICAL PALLIATION TYPE  
 SURVEILLANCE TECHNIQUE DIALYSIS TYPE  
 SYSTEMIC ANTI CANCER THERAPY DRUG ROUTE OF ADMINISTRATION  
 SYSTEMIC ANTI CANCER THERAPY PROGRAMME NUMBER  
 SYSTEMIC ANTI CANCER THERAPY REGIMEN MODIFICATION INDICATOR  
 THERAPY TYPE FOR IMPROVING ACCESS TO PSYCHOLOGICAL THERAPIES  
 TRACHEOSTOMY TUBE IN SITU INDICATOR  
 TREATMENT TYPE FOR NECROTISING ENTEROCOLITIS  
 TREATMENT TYPE FOR PATENT DUCTUS ARTERIOSUS  
 UNTOWARD INTRAOPERATIVE EVENT CODE FOR ANKLE REPLACEMENT  
 UNTOWARD INTRAOPERATIVE EVENT CODE FOR ELBOW REPLACEMENT  
 UNTOWARD INTRAOPERATIVE EVENT CODE FOR HIP REPLACEMENT  
 UNTOWARD INTRAOPERATIVE EVENT CODE FOR KNEE REPLACEMENT  
 UNTOWARD INTRAOPERATIVE EVENT CODE FOR SHOULDER REPLACEMENT  
 VASCULAR LINE TYPE IN SITU  
 VISUAL INSPECTION CONFIRMED NECROTISING ENTEROCOLITIS DURING  
 LAPAROTOMY INDICATOR  
 VITAMIN K ADMINISTERED INDICATOR  
 VITAMIN K ROUTE OF ADMINISTRATION

---

**CLINICAL INVESTIGATION RESULT ITEM**

---

Change to Class: Changed Attributes, Relationships

*Attributes of this Class are:*

K INVESTIGATION RESULT DATE  
 K ~~INVESTIGATION RESULT TIME~~  
 ABNORMALITY DETECTED INDICATOR  
 ACUTE MYELOID LEUKAEMIA RISK FACTORS  
 ALK 1 STATUS  
 ANKLE DORSIFLEXION CODE FOR PRIMARY ANKLE REPLACEMENT  
 ANKLE PLANTARFLEXION CODE FOR PRIMARY ANKLE REPLACEMENT  
~~ARITHMETIC COMPARATOR~~  
 BIOPSY REFERRAL OUTCOME  
 BREAST BIOPSY REFERRAL OUTCOME  
 BREAST CANCER HISTOLOGICAL TYPE  
 BREAST SCREENING MAMMOGRAPHY OUTCOME CODE  
 CALCULATED CREATININE CLEARANCE TYPE

CANCER VASCULAR OR LYMPHATIC INVASION  
CENTRAL TONE STATUS  
CERVICAL GLANDULAR INTRAEPITHELIAL NEOPLASIA PRESENCE AND GRADE  
CERVICAL NODE STATUS  
CHLAMYDIA TEST RESULT  
CLINICAL ASSESSMENT RESULT CODE FOR BREAST CANCER  
CLINICAL INVESTIGATION ITEM TYPE  
CLINICAL INVESTIGATION ITEM UNIT OF MEASURE  
CLINICAL INVESTIGATION RESULT ANALYSED DATE  
CLINICAL INVESTIGATION RESULT CODE FOR RENAL CARE  
CLINICAL INVESTIGATION RESULT CODE FOR RENAL TRANSPLANT  
CLINICAL INVESTIGATION RESULT RECEIVED DATE  
CLINICAL INVESTIGATION RESULT VALUE  
CONDITION SEEN IN ABDOMEN DURING XRAY  
CYSTIC PERIVENTRICULAR LEUKOMALACIA OBSERVED DURING CRANIAL  
ULTRASOUND SCAN INDICATOR  
CYTOGENETIC ABNORMALITY RISK GROUP  
CYTOGENETIC ANALYSIS CODE  
CYTOGENETIC PRESENCE TYPE FOR RHABDOMYOSARCOMA  
CYTOGENETIC RISK CODE  
CYTOGENETIC RISK GROUP FOR PAEDIATRIC MOLECULAR GENETIC  
ABNORMALITIES  
CYTOLOGY RESULT TYPE  
D29 BONE MARROW TEST RESULT  
DEGREES OF FIXED FLEXION DEFORMITY FOR PRIMARY KNEE REPLACEMENT  
DEGREES OF FLEXION RANGE FOR PRIMARY KNEE REPLACEMENT  
DETRUSOR MUSCLE PRESENCE INDICATION CODE  
~~DEVIATING RESULT INDICATOR~~  
DIPSTICK TEST RESULT CODE  
EPIDERMAL GROWTH FACTOR RECEPTOR MUTATIONAL STATUS  
EXCISION MARGIN INDICATION CODE  
FINDING SCHEME IN USE  
GENETIC CONFIRMATION INDICATOR  
GRADE OF DIFFERENTIATION  
GRADE OF DIFFERENTIATION FOR COLORECTAL  
HAEMOGLOBINOPATHY INVESTIGATION RESULT CODE FOR NATIONAL  
NEONATAL DATA SET  
HbA1C ASSAY MEASUREMENT METHOD  
HEPATITIS B INFECTION INDICATION CODE  
HEPATITIS C INFECTION INDICATION CODE  
HEPATOMEGALY INDICATOR  
HORMONE EXPRESSION TYPE  
INTRAVENTRICULAR HAEMORRHAGE GRADE  
INVASIVE CANCER SPECIAL TYPE INDICATOR  
INVESTIGATION EXAMINATION RESULT

~~INVESTIGATION RESULT TEXT~~  
INVESTIGATION RUBELLA RESULT INDICATOR  
KARYOTYPE TEST OUTCOME  
LACTATE DEHYDROGENASE LEVEL  
LYMPH NODE STATUS  
MEASURED GLOMERULAR FILTRATION RATE TYPE CODE  
METASTASIS EXTENT CODE  
NEWBORN BLOOD SPOT TEST OUTCOME STATUS  
NEWBORN HEARING AUDIOLOGY OUTCOME  
NEWBORN HEARING SCREENING OUTCOME  
NUMBER OF FETUSES  
~~NUMERICAL VALUE~~  
OBSERVATION VALUE  
PAEDIATRIC MYELODYSPLASIA CLINICAL FINDINGS  
PATHOLOGICAL RISK CLASSIFICATION CODE AFTER NEPHRECTOMY  
PATHOLOGICAL RISK CLASSIFICATION CODE AFTER PREOPERATIVE  
CHEMOTHERAPY  
PERSON BLOOD GROUP  
PERSON RHESUS FACTOR  
PHYSIOLOGICAL MEASUREMENT INDICATION CODE FOR ELECTROCARDIOGRAM  
PORENCEPHALIC CYST VISIBLE DURING CRANIAL ULTRASOUND SCAN  
INDICATOR  
PREOPERATIVE THERAPY RESPONSE TYPE  
~~RADIOLOGICAL RESULT VERIFIED DATE~~  
~~RADIOLOGICAL RESULT VERIFIED TIME~~  
RESULT ITEM STATUS  
RETINOPATHY OF PREMATURETY CLOCK HOURS MAXIMUM STAGE  
RETINOPATHY OF PREMATURETY MAXIMUM ZONE  
RETINOPATHY OF PREMATURETY PLUS DISEASE STATUS  
RETINOPATHY OF PREMATURETY STAGE  
RISK GROUP ALLOCATION FOR ACUTE LYMPHOBLASTIC LEUKAEMIA  
S CATEGORY CODE  
SENTINEL LYMPH NODE BIOPSY OUTCOME  
SERUM CALCIUM CONCENTRATION CORRECTION CODE  
SITUATION SCHEME IN USE  
SPECIMEN NATURE  
SPLEEN BELOW COSTAL MARGIN  
SPLENOMEGALY INDICATOR  
SUBTALAR JOINT MOVEMENT CODE FOR PRIMARY ANKLE REPLACEMENT  
TIBIA HINDFOOT ALIGNMENT CODE FOR PRIMARY ANKLE REPLACEMENT  
TUMOUR NECROSIS  
VENTRICULAR DILATION DIAGNOSED DURING CRANIAL ULTRASOUND SCAN  
INDICATOR  
VISUAL ACUITY OR FIELD TEST RESULT

## CLINICAL INVESTIGATION RESULT ITEM

---

Change to Class: Changed Attributes, Relationships

*Each CLINICAL INVESTIGATION RESULT ITEM*

- K must be provided by one and only one CLINICAL INTERVENTION
  - may be related to one or more CLINICAL INVESTIGATION RESULT ITEM
  - may be related from one CLINICAL INVESTIGATION RESULT ITEM
  - ~~may be related to one or more CLINICAL INVESTIGATION SERVICE PROVIDER~~
  - may be classified as one and only one CODED CLINICAL ENTRY
  - ~~may be qualified by one or more REFERENCE LIMIT~~
  - may be qualified by one or more UNIT OF MEASUREMENT
- 

## CLINICAL INVESTIGATION SERVICE PROVIDER (RETIRED)\_ renamed from CLINICAL INVESTIGATION SERVICE PROVIDER

---

Change to Class: Changed Name, Attributes, Relationships, Description, status to Retired

~~Healthcare professional or [Organisation](#) associated with producing a [CLINICAL INVESTIGATION RESULT ITEM](#).~~ **This item has been retired from the NHS Data Model and Dictionary.**

References:

~~The Version 1.0 Trial NHS Standard EDIFACT Messages for Radiology Requests and Reports, 14.3.95 The Version 1.1 NHS Standard EDIFACT Messages for Pathology Requests and Reports, 2004~~ **The last live version of this item is available in the March 2019 release of the NHS Data Model and Dictionary.**

**Access to this version can be obtained by emailing [information.standards@nhs.net](mailto:information.standards@nhs.net) with "NHS Data Model and Dictionary - Archive Request" in the email subject line.**

---

## CLINICAL INVESTIGATION SERVICE PROVIDER (RETIRED)\_ renamed from CLINICAL INVESTIGATION SERVICE PROVIDER

---

Change to Class: Changed Name, Attributes, Relationships, Description, status to Retired

*Attributes of this Class are:*

~~CLINICAL SERVICE PROVIDER TYPE~~

**This class has no attributes.**

---

## CLINICAL INVESTIGATION SERVICE PROVIDER (RETIRED)\_ renamed from CLINICAL INVESTIGATION SERVICE PROVIDER

---

Change to Class: Changed Name, Attributes, Relationships, Description, status to Retired

*Each CLINICAL INVESTIGATION SERVICE PROVIDER*

- K ~~must be related to one and only one CLINICAL INVESTIGATION RESULT ITEM~~
- K ~~must be related to one and only one CARE PROFESSIONAL~~

K or must be related to one and only one ORGANISATION

---

#### CLINICAL INVESTIGATION SERVICE PROVIDER (RETIRED) renamed from CLINICAL INVESTIGATION SERVICE PROVIDER

---

Change to Class: Changed Name, Attributes, Relationships, Description, status to Retired

- Changed Name from Data\_Dictionary.Classes.C.CLINICAL\_INVESTIGATION\_SERVICE\_PROVIDER to Retired.Data\_Dictionary.Classes.C.CLINICAL\_INVESTIGATION\_SERVICE\_PROVIDER
  - Changed Attributes
  - Changed Relationships
  - Changed Description
  - Retired CLINICAL INVESTIGATION SERVICE PROVIDER
- 

#### DIAGNOSTIC TEST REQUEST

---

Change to Class: Changed Attributes

*Attributes of this Class are:*

DIAGNOSTIC TEST REQUEST DATE  
DIAGNOSTIC TEST REQUEST RECEIVED DATE  
DIAGNOSTIC TEST REQUEST TYPE  
~~PATHOLOGY SPECIALTY~~  
PATIENT SOURCE SETTING TYPE FOR DIAGNOSTIC IMAGING  
~~RADIOLOGY APPOINTMENT REQUIRED~~  
~~RADIOLOGY INVESTIGATION PREV INDICATOR~~  
~~RADIOLOGY PROCEDURE EARLIEST DATE~~  
~~RADIOLOGY PROCEDURE LATEST DATE~~  
~~RADIOLOGY PROCEDURE PRIORITY~~  
~~RADIOLOGY PROCEDURE REQUESTED DATE~~  
~~RADIOLOGY PROCEDURE REQUESTED TIME~~  
SMEAR SOURCE TYPE

---

#### PATHOLOGY INVESTIGATION TYPE (RETIRED) renamed from PATHOLOGY INVESTIGATION TYPE

---

Change to Class: Changed Name, Attributes, Relationships, Description, status to Retired

Pathology investigations carried out. **This item has been retired from the NHS Data Model and Dictionary.**

**The last live version of this item is available in the March 2019 release of the NHS Data Model and Dictionary.**

**Access to this version can be obtained by emailing [information.standards@nhs.net](mailto:information.standards@nhs.net) with "NHS Data Model and Dictionary - Archive Request" in the email subject line.**

---

---

**PATHOLOGY INVESTIGATION TYPE (RETIRED)\_ renamed from PATHOLOGY INVESTIGATION TYPE**

---

Change to Class: Changed Name, Attributes, Relationships, Description, status to Retired

*Attributes of this Class are:*

~~K~~ ~~PATHOLOGY INVESTIGATION TYPE~~  
~~PATHOLOGY INVESTIGATION TYPE FOR BREAST SCREENING~~

*This class has no attributes.*

---

---

**PATHOLOGY INVESTIGATION TYPE (RETIRED)\_ renamed from PATHOLOGY INVESTIGATION TYPE**

---

Change to Class: Changed Name, Attributes, Relationships, Description, status to Retired

~~Each PATHOLOGY INVESTIGATION TYPE~~

~~may be a classifier of one or more DIAGNOSTIC TEST REQUEST~~

~~may be a classifier of one or more REFERRAL REQUEST~~

---

---

**PATHOLOGY INVESTIGATION TYPE (RETIRED)\_ renamed from PATHOLOGY INVESTIGATION TYPE**

---

Change to Class: Changed Name, Attributes, Relationships, Description, status to Retired

- Changed Name from Data\_Dictionary.Classes.P.PATHOLOGY\_INVESTIGATION\_TYPE to Retired.Data\_Dictionary.Classes.P.PATHOLOGY\_INVESTIGATION\_TYPE
  - Changed Attributes
  - Changed Relationships
  - Changed Description
  - Retired PATHOLOGY INVESTIGATION TYPE
- 

---

**PLANNED ACTIVITY**

---

Change to Class: Changed Attributes

*Attributes of this Class are:*

~~K~~ ~~PLANNED ACTIVITY SEQUENCE NUMBER~~  
**K** **PLANNED ACTIVITY IDENTIFIER**  
~~DECISION TO TREAT DATE~~  
~~FIRST DEFINITIVE TREATMENT PLANNED~~  
~~FURTHER ASSESSMENT TYPE FOR NHS HEALTH CHECK~~  
~~INTENDED PROCEDURE STATUS~~  
~~PLANNED CANCER TREATMENT TYPE~~  
~~PLANNED SERVICE DESCRIPTION~~  
~~RADIOLOGY INVESTIGATION PLAN STATUS~~  
~~RADIOLOGY INVESTIGATION STATUS REASON~~

---

---

**REFERENCE LIMIT (RETIRED)\_ renamed from REFERENCE LIMIT**

---

Change to Class: Changed Name, Attributes, Description, status to Retired



Identifies, for a reference population, the upper and lower reference values of numeric quantities. **This item has been retired from the NHS Data Model and Dictionary.**

**References:**

~~The Version 1.1 NHS Standard EDIFACT Messages for Pathology Requests and Reports, 2001~~

~~The Version 1.0 Trial NHS Standard EDIFACT Messages for GP Hospital Communications – 17.5.95~~  
**The last live version of this item is available in the March 2019 release of the NHS Data Model and Dictionary.**

**Access to this version can be obtained by emailing [information.standards@nhs.net](mailto:information.standards@nhs.net) with "NHS Data Model and Dictionary - Archive Request" in the email subject line.**

---

**REFERENCE LIMIT (RETIRED)\_ renamed from REFERENCE LIMIT**

---

Change to Class: Changed Name, Attributes, Description, status to Retired

*Attributes of this Class are:*

- K REFERENCE LIMIT LOWER QUANTITY
- K REFERENCE LIMIT UNIT OF MEASURE
- K REFERENCE LIMIT UPPER QUANTITY
- REFERENCE LIMIT POPULATION DESCRIPTION

*This class has no attributes.*

---

**REFERENCE LIMIT (RETIRED)\_ renamed from REFERENCE LIMIT**

---

Change to Class: Changed Name, Attributes, Description, status to Retired

- Changed Name from Data\_Dictionary.Classes.R.REFERENCE\_LIMIT to Retired.Data\_Dictionary.Classes.R.REFERENCE\_LIMIT
- Changed Attributes
- Changed Description
- Retired REFERENCE LIMIT

---

**SAMPLE**

---

Change to Class: Changed Attributes, Description

One or more parts taken from a system and intended to provide information on that system or on a subsystem or to provide a basis for a decision on either of these.

The system from which a [SAMPLE](#) is taken may be a subject of investigation or may itself be a [SAMPLE](#). The [SAMPLE](#) is assumed to be representative of the system. The term specimen is sometimes used with the same meaning. The system may be human or non-human.

**References:**

~~The version 1.1 NHS Standard EDIFACT Messages for Pathology Requests and Reports, 2001~~

---

## SAMPLE

---

Change to Class: Changed Attributes, Description

*Attributes of this Class are:*

K SAMPLE COLLECTION DATE  
K SAMPLE COLLECTION TIME  
~~AMOUNT OF SAMPLE COLLECTED~~  
~~ANATOMICAL ORIGIN OF SAMPLE~~  
~~CLINICAL SIGN OBSERVED AT SAMPLE COLLECTION~~  
~~SAMPLE COLLECTION PERIOD END DATE~~  
~~SAMPLE COLLECTION PERIOD END TIME~~  
~~SAMPLE COLLECTION PROCEDURE~~  
~~SAMPLE HANDLING WARNING~~  
~~SAMPLE IDENTIFIER FOR PROVIDER~~  
~~SAMPLE IDENTIFIER FOR REQUESTER~~  
~~SAMPLE RECEIPT DATE~~  
~~SAMPLE RECEIPT TIME~~  
~~SAMPLE TYPE~~  
~~SAMPLE TYPE FOR NATIONAL NEONATAL DATA SET~~  
~~SAMPLE UNIT OF MEASURE~~  
~~SPECIMEN TYPE FOR CHLAMYDIA TESTING~~  
~~TRANSPORT TYPE FOR SAMPLE COLLECTED~~

---

**SERVICE ORDER (RETIRED)** renamed from **SERVICE ORDER**

---

Change to Class: Changed Name, Attributes, Relationships, Description, status to Retired

Each instance of a [SERVICE ORDER](#) carries the information common to one or more requested investigation(s) which are requested on the same occasion. **This item has been retired from the NHS Data Model and Dictionary.**

References:

The Version 1.0 Trial NHS Standard EDIFACT Messages for Radiology Requests and Reports, 14.3.95 **The last live version of this item is available in the March 2019 release of the NHS Data Model and Dictionary.**

**Access to this version can be obtained by emailing [information.standards@nhs.net](mailto:information.standards@nhs.net) with "NHS Data Model and Dictionary - Archive Request" in the email subject line.**

---

**SERVICE ORDER (RETIRED)** renamed from **SERVICE ORDER**

---

Change to Class: Changed Name, Attributes, Relationships, Description, status to Retired

*Attributes of this Class are:*

K SERVICE ORDER IDENTIFIER

~~ASSISTANCE ARRANGED~~  
~~ASSISTANCE ARRANGEMENT RESPONSIBILITY~~  
~~ASSISTANCE REQUIRED~~  
~~ASSISTANCE TYPE~~  
~~BREAST FEEDING INDICATOR~~  
~~INFECTION RISK~~  
~~PROCEED IF MENSTRUAL PERIOD OVERDUE FLAG~~  
~~RADIOLOGY SERVICE ORDER ISSUE DATE~~  
~~RADIOLOGY SERVICE ORDER ISSUE TIME~~  
~~SEDATION REQUIRED INDICATOR~~

*This class has no attributes.*

---

**SERVICE ORDER (RETIRED)\_ renamed from SERVICE ORDER**

---

Change to Class: Changed Name, Attributes, Relationships, Description, status to Retired

~~Each SERVICE ORDER~~

~~may be information common to one or more DIAGNOSTIC TEST REQUEST~~

---

**SERVICE ORDER (RETIRED)\_ renamed from SERVICE ORDER**

---

Change to Class: Changed Name, Attributes, Relationships, Description, status to Retired

- Changed Name from Data\_Dictionary.Classes.S.SERVICE\_ORDER to Retired.Data\_Dictionary.Classes.S.SERVICE\_ORDER
- Changed Attributes
- Changed Relationships
- Changed Description
- Retired SERVICE ORDER

---

**ACTIVITY DATE TYPE**

---

Change to Attribute: Changed Description

The type of date that defines the usage with regard to the [ACTIVITY](#).

An [ACTIVITY](#) may have many dates associated with it but may only have one date of a particular type.

*National Codes:*

- 001 Angiogram Date (Retired July 2012)
- 002 [Arrival Date At Accident and Emergency Department](#)
- 003 Breast Assessment Date (Retired 1 January 2013)
- 004 Cancer Dental Assessment Date (Retired September 2018)
- 005 Colorectal or Stoma Nurse Seen Date (Retired 1 January 2013)
- 006 Coronary Angiography Date (Retired July 2012)
- 007 Care Programme Approach Review Date (Retired September 2018)
- 008 Date Biopsy Taken (Retired 01 April 2014)

009 [Discharge Date](#)  
010 [Discharge Ready Date](#)  
011 [End Date](#)  
012 Event Date (Retired July 2012)  
013 Expected Delivery Date (Retired September 2012)  
014 [First Antenatal Assessment Date](#)  
015 Full Postnatal Examination Date (Retired September 2012)  
016 Initial Patient Contact Date (Retired July 2012)  
017 Investigation Transfer Date (Retired July 2012)  
018 Intrauterine Device Application Date (Retired September 2012)  
019 Intrauterine Device Fitted Date (Retired September 2012)  
020 [Last Dosage Date](#)  
020 [Last Dosage Date \(Retired April 2019\)](#)  
021 Mental Health Care Assessment Date (Retired September 2012)  
022 Miscarriage Date (Retired September 2012)  
023 [Pathology Result Due Date](#)  
023 [Pathology Result Due Date \(Retired April 2019\)](#)  
024 [Patient Informed Biopsy Result Date](#)  
025 Patient Informed Of Outcome Date (Retired September 2012)  
026 Smoking Quit Date (Retired October 2017)  
027 Review Planned Date (Retired 01 April 2014)  
028 Screening Result Date (Retired 01 April 2014)  
029 [Screening Result Sent Date](#)  
030 Specialist Palliative Care Date (Retired 01 April 2014)  
031 [Start Date](#)  
032 Cancer Symptoms First Noted Date (Retired September 2018)  
033 Attendance Date (Retired September 2018)  
034 [Clinical Intervention Date](#)  
035 Immunisation Completion Date (Retired 01 September 2015)  
036 Clinical Status Assessment Date (Retired September 2018)  
037 Dose Given Date (Retired September 2012)  
038 Test Date (Retired September 2012)  
039 Contact Date (Retired September 2018)  
040 Appointment Date (Retired September 2018)  
041 Primary Procedure Date (Retired September 2018)  
042 Second Operation Date (Retired 01 April 2014)  
043 Speech and Language Assessment Date (Retired September 2018)  
044 Third Operation Date (Retired 01 April 2014)  
045 Date First Seen (Retired September 2018)  
046 Statutory Assessment Date (Retired 01 January 2016)  
047 Screening Test Date (Retired September 2018)  
048 Genitourinary Care Contact Date (Retired January 2014)  
049 [Consultant Upgrade Date](#)  
101 Referral Closure Date (Community Care) (Retired 01 September 2015)  
102 Discharge Letter Issued Date (Community Care) (Retired 01 September 2015)  
103 Systemic Anti-Cancer Therapy Administration Date (Retired September 2018)  
104 [Procedure Date](#)

- 105 Immunisation Date (Retired September 2018)
- 106 Antenatal Appointment Date (Retired 1 April 2019)
- 107 Antenatal Booking Appointment Date (Retired September 2018)
- 108 [Pregnancy First Contact Date](#)
- 109 Screening Test Information Given Date (Retired 1 April 2019)
- 110 [Assessment Date For Transplant Suitability](#)
- 111 [Accident and Emergency Initial Assessment Date](#)
- 112 [Accident and Emergency Date Seen For Treatment](#)
- 113 [Accident and Emergency Attendance Conclusion Date](#)
- 114 [Accident and Emergency Departure Date](#)
- 115 Clinical Assessment Date (Retired September 2018)
- 116 Imaging or Radiodiagnostic Event Date (Retired September 2018)
- 117 [Neonatal Critical Care Daily Care Date](#)
- 118 Two Year Neonatal Outcomes Assessment Date (Retired September 2018)
- 119 Date of Pregnancy Outcome (Current Fetus) (Retired 1 April 2019)
- 120 Neonatal Critical Incident Date (Retired 1 April 2019)
- 121 American Joint Committee on Cancer Stage Date (Retired September 2018)
- 122 Ann Arbor Stage Date (Retired September 2018)
- 123 Barcelona Clinic Liver Cancer Stage Date (Retired September 2018)
- 124 Binet Stage Date (Retired September 2018)
- 125 Chang Staging System Stage Date (Retired September 2018)
- 126 Clinical Stage Date (Pancreatic Cancer) (Retired September 2018)
- 127 Final Figo Stage Date (Retired September 2018)
- 128 Holistic Needs Assessment Completed Date (Retired September 2018)
- 129 Intergroup Rhabdomyosarcoma Study Post Surgical Group Date (Retired September 2018)
- 130 International Neuroblastoma Staging System Date (Retired 01 April 2017)
- 131 Myeloma International Staging System Stage Date (Retired September 2018)
- 132 Modified Dukes Stage Date (Retired September 2018)
- 133 [Multidisciplinary Team Discussion Date \(Cancer\)](#)
- 134 [Multidisciplinary Team Meeting Date \(Cancer\)](#)
- 135 Murphy St Jude Stage Date (Retired September 2018)
- 136 Rai Stage Date (Retired 01 April 2017)
- 137 Retinoblastoma Assessment Date (Retired September 2018)
- 138 TNM Stage Grouping Date (Final Pretreatment) (Retired September 2018)
- 139 TNM Stage Grouping Date (Integrated) (Retired September 2018)
- 140 Wilms Tumour Stage Date (Retired September 2018)
- 141 [Care Contact Cancellation Date](#)
- 142 [Care Contact Date](#)
- 143 Child Protection Plan End Date (Retired September 2018)
- 144 Child Protection Plan Start Date (Retired September 2018)
- 145 [Discharge Letter Issued Date \(Mental Health and Community Care\)](#)
- 146 Health Visitor First Antenatal Visit Date (Retired September 2018)
- 147 Infant Physical Examination Date (Retired September 2018)
- 148 Onward Referral Date (Retired September 2018)
- 149 [Referral Closure Date](#)
- 150 [Referral Rejection Date](#)

- 151 [Replacement Appointment Booked Date](#)
- 152 [Replacement Appointment Date Offered](#)
- 153 Service Discharge Date (Retired September 2018)
- 154 Date of Restrictive Intervention (Retired 01 April 2019)
- 155 [Indirect Activity Date](#)
- 156 Mental Health Crisis Plan Creation Date (Retired 01 April 2017)
- 157 Mental Health Crisis Plan Last Updated Date (Retired 01 April 2017)
- 158 [Care Plan Agreed Date](#)
- 159 [Care Plan Creation Date](#)
- 160 [Care Plan Implementation Date](#)
- 161 [Care Plan Last Updated Date](#)
- 162 Five Forensic Pathways Assessment Date (Retired September 2018)
- 163 International Neuroblastoma Risk Group Staging System Stage Date (Retired September 2018)
- 164 Stage Grouping Date (Testicular Cancer) (Retired September 2018)
- 165 [Emergency Care Arrival Date](#)
- 166 [Emergency Care Initial Assessment Date](#)
- 167 [Emergency Care Date Seen For Treatment](#)
- 168 [Emergency Care Attendance Conclusion Date](#)
- 169 [Emergency Care Departure Date](#)
- 170 Injury Date (Retired September 2018)
- 171 Referred To Service Assessment Date (Retired September 2018)
- 172 Intended Smoking Quit Date (Moved to [PLANNED ACTIVITY DATE TYPE](#) September 2018)
- 173 [Cancer Transformation Agreed Date \(Primary Cancer Pathway\)](#)
- 174 [Cancer Progression Agreed Date \(Primary Cancer Pathway\)](#)
- 175 [Clinical Trial Decision Date](#)
- 176 Treatment Start Date (Cancer) (Retired September 2018)
- 177 Cancer Faster Diagnosis Pathway End Date (Retired September 2018)
- 178 Cancer Referral To Treatment Period Start Date (Retired September 2018)
- 179 Cancer Treatment Period Start Date (Retired September 2018)
- 180 [Observable Entity Date](#)

Note: This list is not in alphabetical order.

---

**ACTIVITY TIME TYPE**

---

Change to Attribute: Changed Description

The type of time that defines the usage with regard to the [ACTIVITY](#).

An [ACTIVITY](#) may have many times associated with it but may only have one time of a particular type.

*National Codes:*

- 50 [Accident and Emergency Attendance Conclusion Time](#)
- 51 [Accident and Emergency Departure Time](#)
- 52 [Accident and Emergency Initial Assessment Time](#)
- 53 [Accident and Emergency Time Seen For Treatment](#)
- 54 Arrival At Hospital Time (Retired April 2012)
- 55 ARRIVAL TIME (Retired April 2012)
- 56 [End Time](#)
- 57 Event Time (Retired July 2012)
- 58 Initial Patient Contact Time (Retired July 2012)
- 59 [Last Dosage Time](#)
- 60 [Pathology Result Due Time](#)
- 59 [Last Dosage Time \(Retired April 2019\)](#)
- 60 [Pathology Result Due Time \(Retired April 2019\)](#)
- 61 [Start Time](#)
- 62 Theatre Case Time In To Theatre Suite (Retired September 2012)
- 63 Theatre Case Time Out Of Theatre (Retired September 2012)
- 64 Theatre Case Time Out Of Theatre Suite (Retired September 2012)
- 65 Time Seen (Retired September 2018)
- 66 Discharge Ready Time (Retired April 2012)
- 67 [Arrival Time At Accident and Emergency Department](#)
- 68 Arrival Time For Transport Requests (Retired September 2015)
- 69 [Discharge Time](#)
- 70 [Clinical Intervention Time](#)
- 71 [Care Contact Time](#)
- 72 [Indirect Activity Time](#)
- 73 Service Discharge Time (Retired September 2018)
- 74 [Referral Closure Time](#)
- 75 Onward Referral Time (Retired September 2018)
- 76 [Emergency Care Arrival Time](#)
- 77 [Emergency Care Initial Assessment Time](#)
- 78 [Emergency Care Time Seen For Treatment](#)
- 79 [Emergency Care Attendance Conclusion Time](#)
- 80 [Emergency Care Departure Time](#)
- 81 Injury Time (Retired September 2018)
- 82 Referred To Service Assessment Time (Retired September 2018)
- 83 [Procedure Time](#)
- 84 [Care Plan Agreed Time](#)
- 85 [Care Plan Creation Time](#)
- 86 [Care Plan Last Updated Time](#)
- 87 [Referral Rejection Time](#)
- 88 [Observable Entity Time](#)

Note: This list is not in alphabetical order.

---

**AMOUNT OF SAMPLE COLLECTED (RETIRED)\_ renamed from AMOUNT OF SAMPLE COLLECTED**

---

Change to Attribute: Changed Name, Description, status to Retired

~~Numerical value of amount of [SAMPLE](#).~~ **This item has been retired from the NHS Data Model and Dictionary.**

References:

~~The Version 1.1 NHS Standard EDIFACT Messages for Pathology Requests and Reports, 2004~~ **The last live version of this item is available in the March 2019 release of the NHS Data Model and Dictionary.**

**Access to this version can be obtained by emailing [information.standards@nhs.net](mailto:information.standards@nhs.net) with "NHS Data Model and Dictionary - Archive Request" in the email subject line.**

---

**AMOUNT OF SAMPLE COLLECTED (RETIRED)** renamed from **AMOUNT OF SAMPLE COLLECTED**

---

Change to Attribute: Changed Name, Description, status to Retired

- Changed Name from Data\_Dictionary.Attributes.A.Age.AMOUNT\_OF\_SAMPLE\_COLLECTED to Retired.Data\_Dictionary.Attributes.A.AMOUNT\_OF\_SAMPLE\_COLLECTED
- Changed Description
- Retired AMOUNT OF SAMPLE COLLECTED

---

**ANATOMICAL ORIGIN OF SAMPLE (RETIRED)** renamed from **ANATOMICAL ORIGIN OF SAMPLE**

---

Change to Attribute: Changed Name, Description, status to Retired

~~The location, in as much detail as is appropriate, where in, on or about the body a [SAMPLE](#) is collected from.~~ **This item has been retired from the NHS Data Model and Dictionary.**

References:

~~The Version 1.1 NHS Standard EDIFACT Messages for Pathology Requests and Reports, 2004~~ **The last live version of this item is available in the March 2019 release of the NHS Data Model and Dictionary.**

**Access to this version can be obtained by emailing [information.standards@nhs.net](mailto:information.standards@nhs.net) with "NHS Data Model and Dictionary - Archive Request" in the email subject line.**

---

**ANATOMICAL ORIGIN OF SAMPLE (RETIRED)** renamed from **ANATOMICAL ORIGIN OF SAMPLE**

---

Change to Attribute: Changed Name, Description, status to Retired

- Changed Name from Data\_Dictionary.Attributes.A.Ana.ANATOMICAL\_ORIGIN\_OF\_SAMPLE to Retired.Data\_Dictionary.Attributes.A.ANATOMICAL\_ORIGIN\_OF\_SAMPLE
- Changed Description
- Retired ANATOMICAL ORIGIN OF SAMPLE

---

**ARITHMETIC COMPARATOR (RETIRED)** renamed from **ARITHMETIC COMPARATOR**

---



Change to Attribute: Changed Name, Description, status to Retired

Qualifier for ~~NUMERICAL VALUE~~. This item has been retired from the NHS Data Model and Dictionary.

**Classification:** The last live version of this item is available in the March 2019 release of the NHS Data Model and Dictionary.

- a. Approximately
- b. Equal to
- c. Greater than or equal to
- d. Greater than
- e. Less than
- f. Less than or equal to

References:

~~The Version 1.1 NHS Standard EDIFACT Messages for Pathology Requests and Reports, 2001~~  
~~The Version 1.0 Trial NHS Standard EDIFACT Messages for GP Hospital Communications – 17.5.95~~  
Access to this version can be obtained by emailing [information.standards@nhs.net](mailto:information.standards@nhs.net) with "NHS Data Model and Dictionary - Archive Request" in the email subject line.

---

ARITHMETIC COMPARATOR (RETIRED) renamed from ARITHMETIC COMPARATOR

---

Change to Attribute: Changed Name, Description, status to Retired

- Changed Name from Data\_Dictionary.Attributes.A.Ar.ARITHMETIC\_COMPARATOR to Retired.Data\_Dictionary.Attributes.A.ARITHMETIC\_COMPARATOR
- Changed Description
- Retired ARITHMETIC COMPARATOR

---

ASSISTANCE ARRANGED (RETIRED) renamed from ASSISTANCE ARRANGED

---

Change to Attribute: Changed Name, Description, status to Retired

Indication of whether assistance has been arranged for the subject of a radiology ~~SERVICE ORDER~~. This item has been retired from the NHS Data Model and Dictionary.

**Classification:** The last live version of this item is available in the March 2019 release of the NHS Data Model and Dictionary.

- a. Yes
- b. No

References:

~~The Version 1.0 Trial NHS Standard EDIFACT Messages for Radiology Requests and Reports, 14.3.95~~  
Access to this version can be obtained by emailing [information.standards@nhs.net](mailto:information.standards@nhs.net) with "NHS Data Model and Dictionary - Archive Request" in the email subject line.

---

**ASSISTANCE ARRANGED (RETIRED)\_ renamed from ASSISTANCE ARRANGED**

---

Change to Attribute: Changed Name, Description, status to Retired

- Changed Name from Data\_Dictionary.Attributes.A.Ar.ASSISTANCE\_ARRANGED to Retired.Data\_Dictionary.Attributes.A.ASSISTANCE\_ARRANGED
- Changed Description
- Retired ASSISTANCE ARRANGED

---

**ASSISTANCE ARRANGEMENT RESPONSIBILITY (RETIRED)\_ renamed from ASSISTANCE ARRANGEMENT RESPONSIBILITY**

---

Change to Attribute: Changed Name, Description, status to Retired

Identification of whose responsibility it is to arrange assistance for the subject of a radiology [SERVICE ORDER](#). **This item has been retired from the NHS Data Model and Dictionary.**

**Classification:** **The last live version of this item is available in the March 2019 release of the NHS Data Model and Dictionary.**

- a. ~~Service provider~~
- b. ~~Service requester~~

**References:**

~~The Version 1.0 Trial NHS Standard EDIFACT Messages for Radiology Requests and Reports, 14.3.95~~ **Access to this version can be obtained by emailing [information.standards@nhs.net](mailto:information.standards@nhs.net) with "NHS Data Model and Dictionary - Archive Request" in the email subject line.**

---

**ASSISTANCE ARRANGEMENT RESPONSIBILITY (RETIRED)\_ renamed from ASSISTANCE ARRANGEMENT RESPONSIBILITY**

---

Change to Attribute: Changed Name, Description, status to Retired

- Changed Name from Data\_Dictionary.Attributes.A.Ar.ASSISTANCE\_ARRANGEMENT\_RESPONSIBILITY to Retired.Data\_Dictionary.Attributes.A.ASSISTANCE\_ARRANGEMENT\_RESPONSIBILITY
- Changed Description
- Retired ASSISTANCE ARRANGEMENT RESPONSIBILITY

---

**ASSISTANCE REQUIRED (RETIRED)\_ renamed from ASSISTANCE REQUIRED**

---

Change to Attribute: Changed Name, Description, status to Retired

Indication of whether a [PATIENTS](#) condition and/or circumstances mean that assistance is required to take him/her to and from a [Radiology Department](#). **This item has been retired from the NHS Data Model and Dictionary.**

**Classification:** **The last live version of this item is available in the March 2019 release of the NHS Data Model and Dictionary.**

- a. Yes
- b. No
- c. Unknown

References:

The Version 1.0 Trial NHS Standard EDIFACT Messages for Radiology Requests and Reports, 14.3.95 Access to this version can be obtained by emailing [information.standards@nhs.net](mailto:information.standards@nhs.net) with "NHS Data Model and Dictionary - Archive Request" in the email subject line.

---

**ASSISTANCE REQUIRED (RETIRED)** renamed from ASSISTANCE REQUIRED

---

Change to Attribute: Changed Name, Description, status to Retired

- Changed Name from Data\_Dictionary.Attributes.A.Ar.ASSISTANCE\_REQUIRED to Retired.Data\_Dictionary.Attributes.A.ASSISTANCE\_REQUIRED
- Changed Description
- Retired ASSISTANCE REQUIRED

---

**ASSISTANCE TYPE (RETIRED)** renamed from ASSISTANCE TYPE

---

Change to Attribute: Changed Name, Description, status to Retired

Type of assistance required or arranged for a [PATIENT](#) whose condition and/or circumstances mean that assistance is required to take him/her to and from the [Radiology Department](#). This item has been retired from the NHS Data Model and Dictionary.

**Classification:** The last live version of this item is available in the March 2019 release of the NHS Data Model and Dictionary.

- a. Car 1
- b. Tail lift
- c. Car 2
- d. Stretcher
- e. Pram
- f. Incubator
- g. Trolley
- h. Walking
- i. Chair
- j. Bed
- k. Unknown

References:

The Version 1.0 Trial NHS Standard EDIFACT Messages for Radiology Requests and Reports, 14.3.95 Access to this version can be obtained by emailing [information.standards@nhs.net](mailto:information.standards@nhs.net) with "NHS Data Model and Dictionary - Archive Request" in the email subject line.

---

#### ASSISTANCE TYPE (RETIRED)\_ renamed from ASSISTANCE TYPE

---

Change to Attribute: Changed Name, Description, status to Retired

- Changed Name from Data\_Dictionary.Attributes.A.Ar.ASSISTANCE\_TYPE to Retired.Data\_Dictionary.Attributes.A.ASSISTANCE\_TYPE
  - Changed Description
  - Retired ASSISTANCE TYPE
- 

#### BREAST FEEDING INDICATOR (RETIRED)\_ renamed from BREAST FEEDING INDICATOR

---

Change to Attribute: Changed Name, Description, status to Retired

An indication of whether or not a female is known to be breast feeding or not. **This item has been retired from the NHS Data Model and Dictionary.**

**Classification:** The last live version of this item is available in the March 2019 release of the NHS Data Model and Dictionary.

- a. Known to be breast feeding
- b. Known not to be breast feeding
- c. Unknown

#### References:

The Version 1.0 Trial NHS Standard EDIFACT Messages for Radiology Requests and Reports, 14.3.95 **Access to this version can be obtained by emailing [information.standards@nhs.net](mailto:information.standards@nhs.net) with "NHS Data Model and Dictionary - Archive Request" in the email subject line.**

---

#### BREAST FEEDING INDICATOR (RETIRED)\_ renamed from BREAST FEEDING INDICATOR

---

Change to Attribute: Changed Name, Description, status to Retired

- Changed Name from Data\_Dictionary.Attributes.B.Bre.BREAST\_FEEDING\_INDICATOR to Retired.Data\_Dictionary.Attributes.B.BREAST\_FEEDING\_INDICATOR
  - Changed Description
  - Retired BREAST FEEDING INDICATOR
- 

#### CLINICAL INTERVENTION TYPE

---

Change to Attribute: Changed Description

The type of [CLINICAL INTERVENTION](#).

#### National Codes:

- 01 Anaesthetic Service (Retired November 2013)
- 02 [Anti-Cancer Drug Cycle](#)
- 03 Anti-Cancer Drug Fraction (Retired 1 January 2013)
- 04 [Anti-Cancer Drug Programme](#)
- 05 [Anti-Cancer Drug Regimen](#)

- 06 [Brachytherapy Treatment Course](#)
- 07 Contraceptive Service (Retired November 2013)
- 08 Dental Haemorrhage Service (Retired November 2013)
- 09 Dental Treatment (Retired 01 April 2014)
- 10 Drug Dosage and Administration (Retired 1 January 2013)
- 44 [Drug Treatment](#)
- 11 [Drug Treatment \(Retired April 2019\)](#)
- 12 Emergency Treatment Service (Retired November 2013)
- 13 Endocrine Therapy (Retired 1 January 2013)
- 14 [Fraction](#)
- 15 [Primary Hip Replacement Surgery](#)
- 16 [Imaging or Radiodiagnostic Event](#)
- 17 [Immunisation Dose Given](#)
- 18 [Joint Replacement Surgery](#)
- 19 [Primary Knee Replacement Surgery](#)
- 20 [Labour and Delivery](#)
- 21 Lithotripsy Course Attendance (Retired 1 April 2014)
- 22 Maternity Medical Service (Retired November 2013)
- 23 Minor Surgery Procedure (Retired November 2013)
- 24 Pathology Laboratory Investigation (Retired January 2015)
- 25 [Patient Procedure](#)
- 26 [Post Mortem](#)
- 27 [Radiotherapy Treatment Course](#)
- 28 Screening Test (Retired November 2013)
- 29 Teletherapy Treatment Course (Retired 1 April 2014)
- 30 Test Of Immunity (Retired November 2013)
- 31 Therapy After Discharge (Retired July 2012)
- 32 [Thromboprophylaxis Regime](#)
- 33 Unsealed Source Treatment Course (Retired 1 April 2014)
- 34 Vaccination Service (Retired November 2013)
- 35 Vasectomy Performed (Retired November 2013)
- 36 [Clinical Investigation](#)
- 37 [Systemic Anti-Cancer Drug Cycle](#)
- 38 [Systemic Anti-Cancer Drug Programme](#)
- 39 [Systemic Anti-Cancer Drug Regimen](#)
- 40 [Chemotherapy](#)
- 41 [Cytotoxic Chemotherapy](#)
- 42 [Hormone Therapy](#)
- 43 [Immunotherapy](#)
- 44 Diagnostic Imaging (Retired January 2015)
- 45 6 - 8 Week Physical Examination (Retired January 2015)
- 46 Ultrasound Scan In Pregnancy (Retired January 2015)
- 47 Newborn Physical Examination (Retired January 2015)
- 48 [Biological Therapy](#)
- 49 [Brachytherapy](#)
- 50 [Chemoradiotherapy](#)
- 51 [Cryotherapy](#)

- 52 [High Intensity Focused Ultrasound](#)
- 53 [Hyperbaric Oxygen Therapy](#)
- 54 [Laser Treatment](#)
- 55 [Light Therapy](#)
- 56 [Photodynamic Therapy](#)
- 57 [Proton Therapy](#)
- 58 [Psoralen and Ultraviolet A Therapy](#)
- 59 [Radiofrequency Ablation](#)
- 60 [Radioisotope Therapy](#)
- 61 [Radiosurgery](#)
- 62 [Radiotherapy](#)
- 63 [Teletherapy](#)
- 64 Tissue Typing (Retired January 2015)
- 65 [Blood Transfusion](#)
- 66 [Renal Dialysis](#)
- 67 [Antiretroviral Therapy](#)
- 68 [Drug Regimen](#)
- 69 [Ablative Therapy](#)
- 70 [Laparoscopy](#)
- 71 [Primary Ankle Replacement Surgery](#)
- 72 [Revision Ankle Replacement Surgery](#)
- 73 [Primary Elbow Replacement Surgery](#)
- 74 [Revision Elbow Replacement Surgery](#)
- 75 [Revision Hip Replacement Surgery](#)
- 76 [Revision Knee Replacement Surgery](#)
- 77 [Primary Shoulder Replacement Surgery](#)
- 78 [Revision Shoulder Replacement Surgery](#)
- 79 [Oxygen Therapy](#)
- 80 [Therapeutic Hypothermia](#)
- 81 [Parenteral Nutrition](#)
- 82 [Enteral Feeding](#)
- 83 [Radiotherapy Exposure](#)
- 84 Mental Health Treatment (Retired 01 January 2016)
- 85 [Restrictive Intervention](#)
- 86 [Adjunctive Therapy](#)

---

**CLINICAL SERVICE PROVIDER TYPE (RETIRED)** renamed from **CLINICAL SERVICE PROVIDER TYPE**

---

Change to Attribute: Changed Name, Description, status to Retired

Role of a service provider in connection with the associated [CLINICAL INVESTIGATION RESULT ITEM](#). This item has been retired from the NHS Data Model and Dictionary.

**National Codes:** The last live version of this item is available in the March 2019 release of the NHS Data Model and Dictionary.

- 01 Person responsible for performing work

- 02 Performing laboratory
- 03 Reporting author
- 04 Second reporting author
- 05 Verifier

References:

The Version 1.1 NHS Standard EDIFACT Messages for Pathology Requests and Reports, 2001 The Version 1.0 Trial NHS Standard EDIFACT Messages for Radiology Requests and Reports, 14.3.95 Access to this version can be obtained by emailing [information.standards@nhs.net](mailto:information.standards@nhs.net) with "NHS Data Model and Dictionary - Archive Request" in the email subject line.

**CLINICAL SERVICE PROVIDER TYPE (RETIRED)\_ renamed from CLINICAL SERVICE PROVIDER TYPE**

Change to Attribute: Changed Name, Description, status to Retired

- Changed Name from Data\_Dictionary.Attributes.C.Cla.CLINICAL\_SERVICE\_PROVIDER\_TYPE to Retired.Data\_Dictionary.Attributes.C.CLINICAL\_SERVICE\_PROVIDER\_TYPE
- Changed Description
- Retired CLINICAL SERVICE PROVIDER TYPE

**DEVIATING RESULT INDICATOR (RETIRED)\_ renamed from DEVIATING RESULT INDICATOR**

Change to Attribute: Changed Name, Description, status to Retired

Indicator of degree of deviation from reference values of a measurement result in a [CLINICAL INVESTIGATION RESULT ITEM](#). This item has been retired from the NHS Data Model and Dictionary.

**Classification:** The last live version of this item is available in the March 2019 release of the NHS Data Model and Dictionary.

- a. Normal
- b. Abnormal
- c. Below low reference limit
- d. Significantly below low reference limit
- e. Above high reference limit
- f. Significantly above high reference limit

References:

The Version 1.1 NHS Standard EDIFACT Messages for Pathology Requests and Reports, 2001 Access to this version can be obtained by emailing [information.standards@nhs.net](mailto:information.standards@nhs.net) with "NHS Data Model and Dictionary - Archive Request" in the email subject line.

**DEVIATING RESULT INDICATOR (RETIRED)\_ renamed from DEVIATING RESULT INDICATOR**

Change to Attribute: Changed Name, Description, status to Retired

- Changed Name from Data\_Dictionary.Attributes.D.Den.DEVIATING\_RESULT\_INDICATOR to Retired.Data\_Dictionary.Attributes.D.DEVIATING\_RESULT\_INDICATOR
- Changed Description
- Retired DEVIATING RESULT INDICATOR

---

**DRUG ADMINISTRATION DURATION (RETIRED)\_ renamed from DRUG ADMINISTRATION DURATION**

---

Change to Attribute: Changed Name, Description, status to Retired

The length of time that the party issuing the drug intends the drug to be taken. **This item has been retired from the NHS Data Model and Dictionary.**

**References:**

The Version 1.0 Trial NHS Standard EDIFACT Messages for GP-Hospital Communications 17.5.95 **The last live version of this item is available in the March 2019 release of the NHS Data Model and Dictionary.**

**Access to this version can be obtained by emailing [information.standards@nhs.net](mailto:information.standards@nhs.net) with "NHS Data Model and Dictionary - Archive Request" in the email subject line.**

---

**DRUG ADMINISTRATION DURATION (RETIRED)\_ renamed from DRUG ADMINISTRATION DURATION**

---

Change to Attribute: Changed Name, Description, status to Retired

- Changed Name from Data\_Dictionary.Attributes.D.Drug.DRUG\_ADMINISTRATION\_DURATION to Retired.Data\_Dictionary.Attributes.D.DRUG\_ADMINISTRATION\_DURATION
- Changed Description
- Retired DRUG ADMINISTRATION DURATION

---

**DRUG ADMINISTRATION STATUS (RETIRED)\_ renamed from DRUG ADMINISTRATION STATUS**

---

Change to Attribute: Changed Name, Description, status to Retired

The context of the Drug Treatment. **This item has been retired from the NHS Data Model and Dictionary.**

**Classification:** **The last live version of this item is available in the March 2019 release of the NHS Data Model and Dictionary.**

- Reported
- Recommended but not prescribed
- Prescribed but not dispensed
- Prescribed and dispensed
- Ceased (pre-existing prescription stopped)
- Recommendation to prescribe
- Recommendation to cease
- Patient advised to take
- Patient advised to cease



References: **Access to this version can be obtained by emailing [information.standards@nhs.net](mailto:information.standards@nhs.net) with "NHS Data Model and Dictionary - Archive Request" in the email subject line.**

~~The Version 1.0 Trial NHS Standard EDIFACT Messages for GP Hospital Communications – 17.5.95~~

---

#### **DRUG ADMINISTRATION STATUS (RETIRED)\_ renamed from DRUG ADMINISTRATION STATUS**

---

Change to Attribute: Changed Name, Description, status to Retired

- Changed Name from Data\_Dictionary.Attributes.D.Drug.DRUG\_ADMINISTRATION\_STATUS to Retired.Data\_Dictionary.Attributes.D.DRUG\_ADMINISTRATION\_STATUS
- Changed Description
- Retired DRUG ADMINISTRATION STATUS

---

#### **DRUG DAYS SUPPLY (RETIRED)\_ renamed from DRUG DAYS SUPPLY**

---

Change to Attribute: Changed Name, Description, status to Retired

~~The number of days supply as part of the [Drug Treatment](#).~~ **This item has been retired from the NHS Data Model and Dictionary.**

References:

~~The Version 1.0 Trial NHS Standard EDIFACT Messages for GP Hospital Communications – 17.5.95~~ **The last live version of this item is available in the March 2019 release of the NHS Data Model and Dictionary.**

**Access to this version can be obtained by emailing [information.standards@nhs.net](mailto:information.standards@nhs.net) with "NHS Data Model and Dictionary - Archive Request" in the email subject line.**

---

#### **DRUG DAYS SUPPLY (RETIRED)\_ renamed from DRUG DAYS SUPPLY**

---

Change to Attribute: Changed Name, Description, status to Retired

- Changed Name from Data\_Dictionary.Attributes.D.Drug.DRUG\_DAYS\_SUPPLY to Retired.Data\_Dictionary.Attributes.D.DRUG\_DAYS\_SUPPLY
- Changed Description
- Retired DRUG DAYS SUPPLY

---

#### **DRUG DOSAGE AND ADMIN SPECIFICATION (RETIRED)\_ renamed from DRUG DOSAGE AND ADMIN SPECIFICATION**

---

Change to Attribute: Changed Name, Description, status to Retired

~~Information which, together with the [DRUG IDENTIFICATION](#), provides a full specification of a [Drug Treatment](#).~~ **This item has been retired from the NHS Data Model and Dictionary.**

References:

~~The Version 1.0 Trial NHS Standard EDIFACT Messages for GP Hospital Communications –~~

~~17.5.95~~ **The last live version of this item is available in the March 2019 release of the NHS Data Model and Dictionary.**

**Access to this version can be obtained by emailing [information.standards@nhs.net](mailto:information.standards@nhs.net) with "NHS Data Model and Dictionary - Archive Request" in the email subject line.**

---

**DRUG DOSAGE AND ADMIN SPECIFICATION (RETIRED)\_ renamed from DRUG DOSAGE AND ADMIN SPECIFICATION**

---

Change to Attribute: Changed Name, Description, status to Retired

- Changed Name from Data\_Dictionary.Attributes.D.Drug.DRUG\_DOSAGE\_AND\_ADMIN\_SPECIFICATION to Retired.Data\_Dictionary.Attributes.D.DRUG\_DOSAGE\_AND\_ADMIN\_SPECIFICATION
- Changed Description
- Retired DRUG DOSAGE AND ADMIN SPECIFICATION

---

**DRUG IDENTIFICATION (RETIRED)\_ renamed from DRUG IDENTIFICATION**

---

Change to Attribute: Changed Name, Description, status to Retired

~~Either a brand identification or the generic identification of a drug. It may also identify the form of presentation (for example, tablets, inhaler, patch).~~ **This item has been retired from the NHS Data Model and Dictionary.**

References:

~~The Version 1.0 Trial NHS Standard EDIFACT Messages for GP Hospital Communications~~  
~~17.5.95~~ **The last live version of this item is available in the March 2019 release of the NHS Data Model and Dictionary.**

**Access to this version can be obtained by emailing [information.standards@nhs.net](mailto:information.standards@nhs.net) with "NHS Data Model and Dictionary - Archive Request" in the email subject line.**

---

**DRUG IDENTIFICATION (RETIRED)\_ renamed from DRUG IDENTIFICATION**

---

Change to Attribute: Changed Name, Description, status to Retired

- Changed Name from Data\_Dictionary.Attributes.D.Drug.DRUG\_IDENTIFICATION to Retired.Data\_Dictionary.Attributes.D.DRUG\_IDENTIFICATION
- Changed Description
- Retired DRUG IDENTIFICATION

---

**DRUG INFORMATION COMMENT (RETIRED)\_ renamed from DRUG INFORMATION COMMENT**

---

Change to Attribute: Changed Name, Description, status to Retired

~~To convey any unstructured comment about the [Drug Treatment](#) such as why a drug was prescribed.~~ **This item has been retired from the NHS Data Model and Dictionary.**

References:

~~The Version 1.0 Trial NHS Standard EDIFACT Messages for GP Hospital Communications 17.5.95~~  
**The last live version of this item is available in the March 2019 release of the NHS Data Model and Dictionary.**

**Access to this version can be obtained by emailing [information.standards@nhs.net](mailto:information.standards@nhs.net) with "NHS Data Model and Dictionary - Archive Request" in the email subject line.**

---

**DRUG INFORMATION COMMENT (RETIRED)\_ renamed from DRUG INFORMATION COMMENT**

---

Change to Attribute: Changed Name, Description, status to Retired

- Changed Name from Data\_Dictionary.Attributes.D.Drug.DRUG\_INFORMATION\_COMMENT to Retired.Data\_Dictionary.Attributes.D.DRUG\_INFORMATION\_COMMENT
- Changed Description
- Retired DRUG INFORMATION COMMENT

---

**DRUG INFORMATION TYPE (RETIRED)\_ renamed from DRUG INFORMATION TYPE**

---

Change to Attribute: Changed Name, Description, status to Retired

~~Information which describes the context of the drug information such as drug hypersensitivity information or treatment information.~~  
**This item has been retired from the NHS Data Model and Dictionary.**

~~Classification:~~  
**The last live version of this item is available in the March 2019 release of the NHS Data Model and Dictionary.**

- a. ~~Drug hypersensitivity information~~
- b. ~~Drug treatment Information~~

References:

~~The Version 1.0 Trial NHS Standard EDIFACT Messages for GP Hospital Communications 17.5.95~~  
**Access to this version can be obtained by emailing [information.standards@nhs.net](mailto:information.standards@nhs.net) with "NHS Data Model and Dictionary - Archive Request" in the email subject line.**

---

**DRUG INFORMATION TYPE (RETIRED)\_ renamed from DRUG INFORMATION TYPE**

---

Change to Attribute: Changed Name, Description, status to Retired

- Changed Name from Data\_Dictionary.Attributes.D.Drug.DRUG\_INFORMATION\_TYPE to Retired.Data\_Dictionary.Attributes.D.DRUG\_INFORMATION\_TYPE
- Changed Description
- Retired DRUG INFORMATION TYPE

---

**DRUG QUANTITY SUPPLIED (RETIRED)\_ renamed from DRUG QUANTITY SUPPLIED**

---

Change to Attribute: Changed Name, Description, status to Retired

The amount of drug supplied as part of a [Drug Treatment](#). **This item has been retired from the NHS Data Model and Dictionary.**

References:

The Version 1.0 Trial NHS Standard EDIFACT Messages for GP Hospital Communications—47.5.95 **The last live version of this item is available in the March 2019 release of the NHS Data Model and Dictionary.**

**Access to this version can be obtained by emailing [information.standards@nhs.net](mailto:information.standards@nhs.net) with "NHS Data Model and Dictionary - Archive Request" in the email subject line.**

---

**DRUG QUANTITY SUPPLIED (RETIRED)\_ renamed from DRUG QUANTITY SUPPLIED**

---

Change to Attribute: Changed Name, Description, status to Retired

- Changed Name from Data\_Dictionary.Attributes.D.Drug.DRUG\_QUANTITY\_SUPPLIED to Retired.Data\_Dictionary.Attributes.D.DRUG\_QUANTITY\_SUPPLIED
- Changed Description
- Retired DRUG QUANTITY SUPPLIED

---

**EXPECTED DELAY BEFORE ACTIVITY UNIT (RETIRED)\_ renamed from EXPECTED DELAY BEFORE ACTIVITY UNIT**

---

Change to Attribute: Changed Name, Description, status to Retired

The unit of the expected delay before an [ACTIVITY](#) can be performed. For example, weeks. **This item has been retired from the NHS Data Model and Dictionary.**

References:

The Version 1.0 Trial NHS Standard EDIFACT Messages for GP Hospital Communications—47.5.95 **The last live version of this item is available in the March 2019 release of the NHS Data Model and Dictionary.**

**Access to this version can be obtained by emailing [information.standards@nhs.net](mailto:information.standards@nhs.net) with "NHS Data Model and Dictionary - Archive Request" in the email subject line.**

---

**EXPECTED DELAY BEFORE ACTIVITY UNIT (RETIRED)\_ renamed from EXPECTED DELAY BEFORE ACTIVITY UNIT**

---

Change to Attribute: Changed Name, Description, status to Retired

- Changed Name from Data\_Dictionary.Attributes.E.Ex.EXPECTED\_DELAY\_BEFORE\_ACTIVITY\_UNIT to Retired.Data\_Dictionary.Attributes.E.EXPECTED\_DELAY\_BEFORE\_ACTIVITY\_UNIT
- Changed Description
- Retired EXPECTED DELAY BEFORE ACTIVITY UNIT

**EXPECTED DELAY BEFORE ACTIVITY VALUE (RETIRED)\_ renamed from EXPECTED DELAY BEFORE ACTIVITY VALUE**

---

Change to Attribute: Changed Name, Description, status to Retired

~~The numerical value of the expected delay before an [ACTIVITY](#) can be performed. For example 5 (where the [EXPECTED DELAY BEFORE ACTIVITY UNIT](#) is weeks).~~ **This item has been retired from the NHS Data Model and Dictionary.**

**References:**

~~The Version 1.0 Trial NHS Standard EDIFACT Messages for GP-Hospital Communications 17.5.95~~ **The last live version of this item is available in the March 2019 release of the NHS Data Model and Dictionary.**

**Access to this version can be obtained by emailing [information.standards@nhs.net](mailto:information.standards@nhs.net) with "NHS Data Model and Dictionary - Archive Request" in the email subject line.**

---

**EXPECTED DELAY BEFORE ACTIVITY VALUE (RETIRED)\_ renamed from EXPECTED DELAY BEFORE ACTIVITY VALUE**

---

Change to Attribute: Changed Name, Description, status to Retired

- Changed Name from Data\_Dictionary.Attributes.E.Ex.EXPECTED\_DELAY\_BEFORE\_ACTIVITY\_VALUE to Retired.Data\_Dictionary.Attributes.E.EXPECTED\_DELAY\_BEFORE\_ACTIVITY\_VALUE
  - Changed Description
  - Retired EXPECTED DELAY BEFORE ACTIVITY VALUE
- 

**INFECTION RISK (RETIRED)\_ renamed from INFECTION RISK**

---

Change to Attribute: Changed Name, Description, status to Retired

~~Indication of whether the subject of a radiology [SERVICE ORDER](#) is known to carry a risk of infection.~~ **This item has been retired from the NHS Data Model and Dictionary.**

~~**Classification:**~~ **The last live version of this item is available in the March 2019 release of the NHS Data Model and Dictionary.**

- a. ~~Known to carry infection~~
- b. ~~No known risk of infection~~

**References:**

~~The Version 1.0 Trial NHS Standard EDIFACT Messages for Radiology Requests and Reports, 14.3.95~~ **Access to this version can be obtained by emailing [information.standards@nhs.net](mailto:information.standards@nhs.net) with "NHS Data Model and Dictionary - Archive Request" in the email subject line.**

---

**INFECTION RISK (RETIRED)\_ renamed from INFECTION RISK**

---

Change to Attribute: Changed Name, Description, status to Retired

- Changed Name from Data\_Dictionary.Attributes.I.In.INFECTION\_RISK to Retired.Data\_Dictionary.Attributes.I.INFECTION\_RISK
- Changed Description
- Retired INFECTION RISK

---

#### INVESTIGATION RESULT DATE

---

Change to Attribute: Changed Description

~~The date on which an investigation was concluded e.g. the date the result was authorised.~~ The date on which an investigation was concluded e.g. the **DATE** the result was authorised.

#### References:

~~The Version 1.1 NHS Standard EDIFACT Messages for Pathology Requests and Reports, 2001~~

~~The Version 1.0 Trial NHS Standard EDIFACT Messages for GP Hospital Communications—17.5.95~~

---

#### INVESTIGATION RESULT TEXT (RETIRED)\_ renamed from INVESTIGATION RESULT TEXT

---

Change to Attribute: Changed Name, Description, status to Retired

~~The result of a clinical investigation expressed in text form. For example, 'negative', 'heavy growth of E Coli', 'opacity near right hilum seen on previous film confirmed as artefact'.~~ **This item has been retired from the NHS Data Model and Dictionary.**

#### References:

~~The Version 1.0 Trial NHS Standard EDIFACT Messages for GP Hospital Communications—17.5.95~~ **The last live version of this item is available in the March 2019 release of the NHS Data Model and Dictionary.**

**Access to this version can be obtained by emailing [information.standards@nhs.net](mailto:information.standards@nhs.net) with "NHS Data Model and Dictionary - Archive Request" in the email subject line.**

---

#### INVESTIGATION RESULT TEXT (RETIRED)\_ renamed from INVESTIGATION RESULT TEXT

---

Change to Attribute: Changed Name, Description, status to Retired

- Changed Name from Data\_Dictionary.Attributes.I.Int.INVESTIGATION\_RESULT\_TEXT to Retired.Data\_Dictionary.Attributes.I.INVESTIGATION\_RESULT\_TEXT
- Changed Description
- Retired INVESTIGATION RESULT TEXT

---

#### INVESTIGATION RESULT TIME (RETIRED)\_ renamed from INVESTIGATION RESULT TIME

---

Change to Attribute: Changed Name, Description, status to Retired

~~The time at which an investigation was concluded e.g. the time the result was authorised.~~ **This item has been retired from the NHS Data Model and Dictionary.**

References:

~~The Version 1.1 NHS Standard EDIFACT Messages for Pathology Requests and Reports, 2001  
The Version 1.0 Trial NHS Standard EDIFACT Messages for GP Hospital Communications—  
17.5.95~~ **The last live version of this item is available in the March 2019 release of the NHS Data Model and Dictionary.**

**Access to this version can be obtained by emailing [information.standards@nhs.net](mailto:information.standards@nhs.net) with "NHS Data Model and Dictionary - Archive Request" in the email subject line.**

---

**INVESTIGATION RESULT TIME (RETIRED)** renamed from INVESTIGATION RESULT TIME

---

Change to Attribute: Changed Name, Description, status to Retired

- Changed Name from Data\_Dictionary.Attributes.I.Int.INVESTIGATION\_RESULT\_TIME to Retired.Data\_Dictionary.Attributes.I.INVESTIGATION\_RESULT\_TIME
- Changed Description
- Retired INVESTIGATION RESULT TIME

---

**NUMERICAL VALUE (RETIRED)** renamed from NUMERICAL VALUE

---

Change to Attribute: Changed Name, Description, status to Retired

~~Numerical value of amount for a [CLINICAL INVESTIGATION RESULT ITEM](#).~~ **This item has been retired from the NHS Data Model and Dictionary.**

References:

~~The Version 1.1 NHS Standard EDIFACT Messages for Pathology Requests and Reports, 2001  
The Version 1.0 Trial NHS Standard EDIFACT Messages for GP Hospital Communications—  
17.5.95~~ **The last live version of this item is available in the March 2019 release of the NHS Data Model and Dictionary.**

**Access to this version can be obtained by emailing [information.standards@nhs.net](mailto:information.standards@nhs.net) with "NHS Data Model and Dictionary - Archive Request" in the email subject line.**

---

**NUMERICAL VALUE (RETIRED)** renamed from NUMERICAL VALUE

---

Change to Attribute: Changed Name, Description, status to Retired

- Changed Name from Data\_Dictionary.Attributes.N.No.NUMERICAL\_VALUE to Retired.Data\_Dictionary.Attributes.N.NUMERICAL\_VALUE
- Changed Description
- Retired NUMERICAL VALUE

---

**PATHOLOGY INVESTIGATION PRIORITY (RETIRED)** renamed from PATHOLOGY INVESTIGATION PRIORITY

---

Change to Attribute: Changed Name, Description, status to Retired

To specify the reporting priority of a [Pathology Laboratory Investigation](#) as indicated by the requester in a laboratory service order. **This item has been retired from the NHS Data Model and Dictionary.**

**Classification:** **The last live version of this item is available in the March 2019 release of the NHS Data Model and Dictionary.**

- a. Very urgent
- b. Urgent
- c. Routine

References:

The Version 1.1 NHS Standard EDIFACT Messages for Pathology Requests and Reports, 2004 **Access to this version can be obtained by emailing [information.standards@nhs.net](mailto:information.standards@nhs.net) with "NHS Data Model and Dictionary - Archive Request" in the email subject line.**

---

**PATHOLOGY INVESTIGATION PRIORITY (RETIRED)** renamed from **PATHOLOGY INVESTIGATION PRIORITY**

---

Change to Attribute: Changed Name, Description, status to Retired

- Changed Name from Data\_Dictionary.Attributes.P.PATHOLOGY\_INVESTIGATION\_PRIORITY to Retired.Data\_Dictionary.Attributes.P.PATHOLOGY\_INVESTIGATION\_PRIORITY
- Changed Description
- Retired PATHOLOGY INVESTIGATION PRIORITY

---

**PATHOLOGY SPECIALTY (RETIRED)** renamed from **PATHOLOGY SPECIALTY**

---

Change to Attribute: Changed Name, Description, status to Retired

A breakdown of the type of work which may be carried out in a [Pathology Department](#). This is used to classify a [DIAGNOSTIC TEST REQUEST](#). **This item has been retired from the NHS Data Model and Dictionary.**

**Classification:** **The last live version of this item is available in the March 2019 release of the NHS Data Model and Dictionary.**

- a. Chemical pathology
- b. General pathology
- c. Haematology
- d. Histopathology, cytology and neuropathology
- e. Immunopathology
- f. Medical microbiology
- g. Cyto-genetics

**Access to this version can be obtained by emailing [information.standards@nhs.net](mailto:information.standards@nhs.net) with "NHS Data Model and Dictionary - Archive Request" in the email subject line.**



---

**PATHOLOGY SPECIALTY (RETIRED)\_ renamed from PATHOLOGY SPECIALTY**

---

Change to Attribute: Changed Name, Description, status to Retired

- Changed Name from Data\_Dictionary.Attributes.P.PATHOLOGY\_SPECIALTY to Retired.Data\_Dictionary.Attributes.P.PATHOLOGY\_SPECIALTY
  - Changed Description
  - Retired PATHOLOGY SPECIALTY
- 

**PLANNED ACTIVITY DESCRIPTION (RETIRED)\_ renamed from PLANNED ACTIVITY DESCRIPTION**

---

Change to Attribute: Changed Name, Description, status to Retired

~~Any comment or information relating to the [PLANNED ACTIVITY](#).~~ **This item has been retired from the NHS Data Model and Dictionary.**

**References:**

~~The Version 1.0 Trial NHS Standard EDIFACT Messages for GP-Hospital Communications – 17.5.95~~ **The last live version of this item is available in the March 2019 release of the NHS Data Model and Dictionary.**

**Access to this version can be obtained by emailing [information.standards@nhs.net](mailto:information.standards@nhs.net) with "NHS Data Model and Dictionary - Archive Request" in the email subject line.**

---

**PLANNED ACTIVITY DESCRIPTION (RETIRED)\_ renamed from PLANNED ACTIVITY DESCRIPTION**

---

Change to Attribute: Changed Name, Description, status to Retired

- Changed Name from Data\_Dictionary.Attributes.P.Pha.PLANNED\_ACTIVITY\_DESCRIPTION to Retired.Data\_Dictionary.Attributes.P.PLANNED\_ACTIVITY\_DESCRIPTION
  - Changed Description
  - Retired PLANNED ACTIVITY DESCRIPTION
- 

**PLANNED ACTIVITY IDENTIFIER\_ renamed from PLANNED ACTIVITY SEQUENCE NUMBER**

---

Change to Attribute: Changed Name, Description

~~A sequential number generated to make a [PLANNED ACTIVITY](#) unique.~~ **A unique identifier for a [PLANNED ACTIVITY](#).**

**This item is not referenced in a data set in the NHS Data Model and Dictionary. It has been retained to ensure the modelling is consistent.**

---

**PLANNED ACTIVITY IDENTIFIER\_ renamed from PLANNED ACTIVITY SEQUENCE NUMBER**

---

Change to Attribute: Changed Name, Description

- Changed Name from  
Data\_Dictionary.Attributes.P.Pha.PLANNED\_ACTIVITY\_SEQUENCE\_NUMBER to  
Data\_Dictionary.Attributes.P.Pha.PLANNED\_ACTIVITY\_IDENTIFIER
- Changed Description

**PROCEED IF MENSTRUAL PERIOD OVERDUE FLAG (RETIRED)\_** renamed from **PROCEED IF MENSTRUAL PERIOD OVERDUE FLAG**

Change to Attribute: Changed Name, Description, status to Retired

Indicator to a service provider that, if at the time of attendance, a [PATIENT](#) confirms that her menstrual period is overdue, whether the examination should continue or not. **This item has been retired from the NHS Data Model and Dictionary.**

Note: this information is required if the [PATIENT](#) is female, menstrual and of appropriate age. **The last live version of this item is available in the March 2019 release of the NHS Data Model and Dictionary.**

**Classification:** Access to this version can be obtained by emailing [information.standards@nhs.net](mailto:information.standards@nhs.net) with "NHS Data Model and Dictionary - Archive Request" in the email subject line.

- a. Yes
- b. No

References:

~~The Version 1.0 Trial NHS Standard EDIFACT Messages for Radiology Requests and Reports, 14.3.95~~

**PROCEED IF MENSTRUAL PERIOD OVERDUE FLAG (RETIRED)\_** renamed from **PROCEED IF MENSTRUAL PERIOD OVERDUE FLAG**

Change to Attribute: Changed Name, Description, status to Retired

- Changed Name from  
Data\_Dictionary.Attributes.P.Prio.PROCEED\_IF\_MENSTRUAL\_PERIOD\_OVERDUE\_FLAG to  
Retired.Data\_Dictionary.Attributes.P.PROCEED\_IF\_MENSTRUAL\_PERIOD\_OVERDUE\_FLAG
- Changed Description
- Retired PROCEED IF MENSTRUAL PERIOD OVERDUE FLAG

**RADIOLOGICAL RESULT VERIFIED DATE (RETIRED)\_** renamed from **RADIOLOGICAL RESULT VERIFIED DATE**

Change to Attribute: Changed Name, Description, status to Retired

The date when a [CLINICAL INVESTIGATION RESULT ITEM](#) was verified. **This item has been retired from the NHS Data Model and Dictionary.**

References:

~~The Version 1.0 Trial NHS Standard EDIFACT Messages for Radiology Requests and Reports,~~

~~14.3.95~~ **The last live version of this item is available in the March 2019 release of the NHS Data Model and Dictionary.**

**Access to this version can be obtained by emailing [information.standards@nhs.net](mailto:information.standards@nhs.net) with "NHS Data Model and Dictionary - Archive Request" in the email subject line.**

---

**RADIOLOGICAL RESULT VERIFIED DATE (RETIRED)** renamed from RADIOLOGICAL RESULT VERIFIED DATE

---

Change to Attribute: Changed Name, Description, status to Retired

- Changed Name from Data\_Dictionary.Attributes.R.RADIOLOGICAL\_RESULT\_VERIFIED\_DATE to Retired.Data\_Dictionary.Attributes.R.RADIOLOGICAL\_RESULT\_VERIFIED\_DATE
- Changed Description
- Retired RADIOLOGICAL RESULT VERIFIED DATE

---

**RADIOLOGICAL RESULT VERIFIED TIME (RETIRED)** renamed from RADIOLOGICAL RESULT VERIFIED TIME

---

Change to Attribute: Changed Name, Description, status to Retired

~~The time when a [CLINICAL INVESTIGATION RESULT ITEM](#) was verified.~~ **This item has been retired from the NHS Data Model and Dictionary.**

References:

~~The Version 1.0 Trial NHS Standard EDIFACT Messages for Radiology Requests and Reports, 14.3.95~~ **The last live version of this item is available in the March 2019 release of the NHS Data Model and Dictionary.**

**Access to this version can be obtained by emailing [information.standards@nhs.net](mailto:information.standards@nhs.net) with "NHS Data Model and Dictionary - Archive Request" in the email subject line.**

---

**RADIOLOGICAL RESULT VERIFIED TIME (RETIRED)** renamed from RADIOLOGICAL RESULT VERIFIED TIME

---

Change to Attribute: Changed Name, Description, status to Retired

- Changed Name from Data\_Dictionary.Attributes.R.RADIOLOGICAL\_RESULT\_VERIFIED\_TIME to Retired.Data\_Dictionary.Attributes.R.RADIOLOGICAL\_RESULT\_VERIFIED\_TIME
- Changed Description
- Retired RADIOLOGICAL RESULT VERIFIED TIME

---

**RADIOLOGY APPOINTMENT REQUIRED (RETIRED)** renamed from RADIOLOGY APPOINTMENT REQUIRED

---

Change to Attribute: Changed Name, Description, status to Retired

~~Indicator to a service provider that an [APPOINTMENT](#) is required to be made for a radiology investigation.~~ **This item has been retired from the NHS Data Model and Dictionary.**

**Classification:** The last live version of this item is available in the March 2019 release of the NHS Data Model and Dictionary.

- a. Yes
- b. No

**References:**

The Version 1.0 Trial NHS Standard EDIFACT Messages for Radiology Requests and Reports, 44.3.95 Access to this version can be obtained by emailing [information.standards@nhs.net](mailto:information.standards@nhs.net) with "NHS Data Model and Dictionary - Archive Request" in the email subject line.

---

**RADIOLOGY APPOINTMENT REQUIRED (RETIRED)\_ renamed from RADIOLOGY APPOINTMENT REQUIRED**

---

Change to Attribute: Changed Name, Description, status to Retired

- Changed Name from Data\_Dictionary.Attributes.R.RADIOLOGY\_APPOINTMENT\_REQUIRED to Retired.Data\_Dictionary.Attributes.R.RADIOLOGY\_APPOINTMENT\_REQUIRED
- Changed Description
- Retired RADIOLOGY APPOINTMENT REQUIRED

---

**RADIOLOGY INVESTIGATION PLAN STATUS (RETIRED)\_ renamed from RADIOLOGY INVESTIGATION PLAN STATUS**

---

Change to Attribute: Changed Name, Description, status to Retired

The status of a [Radiology Investigation Plan](#). This item has been retired from the NHS Data Model and Dictionary.

**Classification:** The last live version of this item is available in the March 2019 release of the NHS Data Model and Dictionary.

- a. Request accepted: investigation planned
- b. Request rejected
- c. Investigation postponed

**References:**

The Version 1.0 Trial NHS Standard EDIFACT Messages for Radiology Requests and Reports, 44.3.95 Access to this version can be obtained by emailing [information.standards@nhs.net](mailto:information.standards@nhs.net) with "NHS Data Model and Dictionary - Archive Request" in the email subject line.

---

**RADIOLOGY INVESTIGATION PLAN STATUS (RETIRED)\_ renamed from RADIOLOGY INVESTIGATION PLAN STATUS**

---

Change to Attribute: Changed Name, Description, status to Retired

- Changed Name from Data\_Dictionary.Attributes.R.RADIOLOGY\_INVESTIGATION\_PLAN\_STATUS to Retired.Data\_Dictionary.Attributes.R.RADIOLOGY\_INVESTIGATION\_PLAN\_STATUS

- Changed Description
- Retired RADIOLOGY INVESTIGATION PLAN STATUS

---

**RADIOLOGY INVESTIGATION PREV INDICATOR (RETIRED)\_ renamed from RADIOLOGY INVESTIGATION PREV INDICATOR**

---

Change to Attribute: Changed Name, Description, status to Retired

Indication of whether a previous radiology investigation is known to have been conducted on the subject of a radiology [SERVICE ORDER](#). **This item has been retired from the NHS Data Model and Dictionary.**

**Classification:** **The last live version of this item is available in the March 2019 release of the NHS Data Model and Dictionary.**

- a. Yes
- b. No
- c. Unknown

**References:**

The Version 1.0 Trial NHS Standard EDIFACT Messages for Radiology Requests and Reports, 14.3.95 **Access to this version can be obtained by emailing [information.standards@nhs.net](mailto:information.standards@nhs.net) with "NHS Data Model and Dictionary - Archive Request" in the email subject line.**

---

**RADIOLOGY INVESTIGATION PREV INDICATOR (RETIRED)\_ renamed from RADIOLOGY INVESTIGATION PREV INDICATOR**

---

Change to Attribute: Changed Name, Description, status to Retired

- Changed Name from Data\_Dictionary.Attributes.R.RADIOLOGY\_INVESTIGATION\_PREV\_INDICATOR to Retired.Data\_Dictionary.Attributes.R.RADIOLOGY\_INVESTIGATION\_PREV\_INDICATOR
- Changed Description
- Retired RADIOLOGY INVESTIGATION PREV INDICATOR

---

**RADIOLOGY INVESTIGATION STATUS REASON (RETIRED)\_ renamed from RADIOLOGY INVESTIGATION STATUS REASON**

---

Change to Attribute: Changed Name, Description, status to Retired

The reason why a [Radiology Investigation Plan](#) was rejected or postponed. **This item has been retired from the NHS Data Model and Dictionary.**

**Classification:** **The last live version of this item is available in the March 2019 release of the NHS Data Model and Dictionary.**

- a. Not clinically justified
- b. Procedure not available
- c. Procedure already performed
- d. Patient pregnant

References:

The Version 1.0 Trial NHS Standard EDIFACT Messages for Radiology Requests and Reports, 14.3.95 **Access to this version can be obtained by emailing [information.standards@nhs.net](mailto:information.standards@nhs.net) with "NHS Data Model and Dictionary - Archive Request" in the email subject line.**

---

**RADIOLOGY INVESTIGATION STATUS REASON (RETIRED)\_ renamed from RADIOLOGY INVESTIGATION STATUS REASON**

---

Change to Attribute: Changed Name, Description, status to Retired

- Changed Name from Data\_Dictionary.Attributes.R.RADIOLOGY\_INVESTIGATION\_STATUS\_REASON to Retired.Data\_Dictionary.Attributes.R.RADIOLOGY\_INVESTIGATION\_STATUS\_REASON
- Changed Description
- Retired RADIOLOGY INVESTIGATION STATUS REASON

---

**RADIOLOGY PROCEDURE EARLIEST DATE (RETIRED)\_ renamed from RADIOLOGY PROCEDURE EARLIEST DATE**

---

Change to Attribute: Changed Name, Description, status to Retired

~~The date on or after which the requester wishes the investigation to be conducted in a [DIAGNOSTIC TEST REQUEST](#).~~ **This item has been retired from the NHS Data Model and Dictionary.**

References:

The Version 1.0 Trial NHS Standard EDIFACT Messages for Radiology Requests and Reports, 14.3.95 **The last live version of this item is available in the March 2019 release of the NHS Data Model and Dictionary.**

**Access to this version can be obtained by emailing [information.standards@nhs.net](mailto:information.standards@nhs.net) with "NHS Data Model and Dictionary - Archive Request" in the email subject line.**

---

**RADIOLOGY PROCEDURE EARLIEST DATE (RETIRED)\_ renamed from RADIOLOGY PROCEDURE EARLIEST DATE**

---

Change to Attribute: Changed Name, Description, status to Retired

- Changed Name from Data\_Dictionary.Attributes.R.RADIOLOGY\_PROCEDURE\_EARLIEST\_DATE to Retired.Data\_Dictionary.Attributes.R.RADIOLOGY\_PROCEDURE\_EARLIEST\_DATE
- Changed Description
- Retired RADIOLOGY PROCEDURE EARLIEST DATE

---

**RADIOLOGY PROCEDURE LATEST DATE (RETIRED)\_ renamed from RADIOLOGY PROCEDURE LATEST DATE**

---

Change to Attribute: Changed Name, Description, status to Retired

~~The date by which the requester wishes the investigation to have been conducted in a [DIAGNOSTIC TEST REQUEST](#).~~ **This item has been retired from the NHS Data Model and Dictionary.**

References:

~~The Version 1.0 Trial NHS Standard EDIFACT Messages for Radiology Requests and Reports, 14.3.95~~ **The last live version of this item is available in the March 2019 release of the NHS Data Model and Dictionary.**

**Access to this version can be obtained by emailing [information.standards@nhs.net](mailto:information.standards@nhs.net) with "NHS Data Model and Dictionary - Archive Request" in the email subject line.**

---

**RADIOLOGY PROCEDURE LATEST DATE (RETIRED)\_ renamed from RADIOLOGY PROCEDURE LATEST DATE**

---

Change to Attribute: Changed Name, Description, status to Retired

- Changed Name from Data\_Dictionary.Attributes.R.RADIOLOGY\_PROCEDURE\_LATEST\_DATE to Retired.Data\_Dictionary.Attributes.R.RADIOLOGY\_PROCEDURE\_LATEST\_DATE
- Changed Description
- Retired RADIOLOGY PROCEDURE LATEST DATE

---

**RADIOLOGY PROCEDURE PRIORITY (RETIRED)\_ renamed from RADIOLOGY PROCEDURE PRIORITY**

---

Change to Attribute: Changed Name, Description, status to Retired

~~Priority indicated by the requester of a radiology investigation in a [DIAGNOSTIC TEST REQUEST](#).~~ **This item has been retired from the NHS Data Model and Dictionary.**

~~Classification:~~ **The last live version of this item is available in the March 2019 release of the NHS Data Model and Dictionary.**

- a. ~~Very urgent~~
- b. ~~Urgent~~
- c. ~~Routine~~
- d. ~~Within 24 hours~~
- e. ~~Within 1 week~~
- f. ~~Within 2 weeks~~

References:

~~The Version 1.0 Trial NHS Standard EDIFACT Messages for Radiology Requests and Reports, 14.3.95~~ **Access to this version can be obtained by emailing [information.standards@nhs.net](mailto:information.standards@nhs.net) with "NHS Data Model and Dictionary - Archive Request" in the email subject line.**

---

**RADIOLOGY PROCEDURE PRIORITY (RETIRED)\_ renamed from RADIOLOGY PROCEDURE PRIORITY**

---

Change to Attribute: Changed Name, Description, status to Retired

- Changed Name from Data\_Dictionary.Attributes.R.RADIOLOGY\_PROCEDURE\_PRIORITY to Retired.Data\_Dictionary.Attributes.R.RADIOLOGY\_PROCEDURE\_PRIORITY
- Changed Description
- Retired RADIOLOGY PROCEDURE PRIORITY

---

**RADIOLOGY PROCEDURE REQUESTED DATE (RETIRED)\_ renamed from RADIOLOGY PROCEDURE REQUESTED DATE**

---

Change to Attribute: Changed Name, Description, status to Retired

The date on which the requester wishes the investigation to be conducted in a [DIAGNOSTIC TEST REQUEST](#). **This item has been retired from the NHS Data Model and Dictionary.**

**References:**

~~The Version 1.0 Trial NHS Standard EDIFACT Messages for Radiology Requests and Reports, 14.3.95~~ **The last live version of this item is available in the March 2019 release of the NHS Data Model and Dictionary.**

**Access to this version can be obtained by emailing [information.standards@nhs.net](mailto:information.standards@nhs.net) with "NHS Data Model and Dictionary - Archive Request" in the email subject line.**

---

**RADIOLOGY PROCEDURE REQUESTED DATE (RETIRED)\_ renamed from RADIOLOGY PROCEDURE REQUESTED DATE**

---

Change to Attribute: Changed Name, Description, status to Retired

- Changed Name from Data\_Dictionary.Attributes.R.RADIOLOGY\_PROCEDURE\_REQUESTED\_DATE to Retired.Data\_Dictionary.Attributes.R.RADIOLOGY\_PROCEDURE\_REQUESTED\_DATE
- Changed Description
- Retired RADIOLOGY PROCEDURE REQUESTED DATE

---

**RADIOLOGY PROCEDURE REQUESTED TIME (RETIRED)\_ renamed from RADIOLOGY PROCEDURE REQUESTED TIME**

---

Change to Attribute: Changed Name, Description, status to Retired

The time at which the requester wishes the investigation to be conducted in a [DIAGNOSTIC TEST REQUEST](#). **This item has been retired from the NHS Data Model and Dictionary.**

**References:**

~~The Version 1.0 Trial NHS Standard EDIFACT Messages for Radiology Requests and Reports, 14.3.95~~ **The last live version of this item is available in the March 2019 release of the NHS Data Model and Dictionary.**

**Access to this version can be obtained by emailing [information.standards@nhs.net](mailto:information.standards@nhs.net) with "NHS Data Model and Dictionary - Archive Request" in the email subject line.**

---



**RADIOLOGY PROCEDURE REQUESTED TIME (RETIRED)\_ renamed from RADIOLOGY PROCEDURE REQUESTED TIME**

---

Change to Attribute: Changed Name, Description, status to Retired

- Changed Name from Data\_Dictionary.Attributes.R.RADIOLOGY\_PROCEDURE\_REQUESTED\_TIME to Retired.Data\_Dictionary.Attributes.R.RADIOLOGY\_PROCEDURE\_REQUESTED\_TIME
  - Changed Description
  - Retired RADIOLOGY PROCEDURE REQUESTED TIME
- 

**RADIOLOGY SERVICE ORDER ISSUE DATE (RETIRED)\_ renamed from RADIOLOGY SERVICE ORDER ISSUE DATE**

---

Change to Attribute: Changed Name, Description, status to Retired

The date when a radiology [SERVICE ORDER](#) was issued. **This item has been retired from the NHS Data Model and Dictionary.**

**References:**

The Version 1.0 Trial NHS Standard EDIFACT Messages for Radiology Requests and Reports, 44.3.95 **The last live version of this item is available in the March 2019 release of the NHS Data Model and Dictionary.**

**Access to this version can be obtained by emailing [information.standards@nhs.net](mailto:information.standards@nhs.net) with "NHS Data Model and Dictionary - Archive Request" in the email subject line.**

---

**RADIOLOGY SERVICE ORDER ISSUE DATE (RETIRED)\_ renamed from RADIOLOGY SERVICE ORDER ISSUE DATE**

---

Change to Attribute: Changed Name, Description, status to Retired

- Changed Name from Data\_Dictionary.Attributes.R.RADIOLOGY\_SERVICE\_ORDER\_ISSUE\_DATE to Retired.Data\_Dictionary.Attributes.R.RADIOLOGY\_SERVICE\_ORDER\_ISSUE\_DATE
  - Changed Description
  - Retired RADIOLOGY SERVICE ORDER ISSUE DATE
- 

**RADIOLOGY SERVICE ORDER ISSUE TIME (RETIRED)\_ renamed from RADIOLOGY SERVICE ORDER ISSUE TIME**

---

Change to Attribute: Changed Name, Description, status to Retired

The time when a radiology [SERVICE ORDER](#) was issued. **This item has been retired from the NHS Data Model and Dictionary.**

**References:**

The Version 1.0 Trial NHS Standard EDIFACT Messages for Radiology Requests and Reports, 44.3.95 **The last live version of this item is available in the March 2019 release of the NHS Data Model and Dictionary.**

Access to this version can be obtained by emailing [information.standards@nhs.net](mailto:information.standards@nhs.net) with "NHS Data Model and Dictionary - Archive Request" in the email subject line.

---

**RADIOLOGY SERVICE ORDER ISSUE TIME (RETIRED)**\_ renamed from **RADIOLOGY SERVICE ORDER ISSUE TIME**

---

Change to Attribute: Changed Name, Description, status to Retired

- Changed Name from Data\_Dictionary.Attributes.R.RADIOLOGY\_SERVICE\_ORDER\_ISSUE\_TIME to Retired.Data\_Dictionary.Attributes.R.RADIOLOGY\_SERVICE\_ORDER\_ISSUE\_TIME
- Changed Description
- Retired RADIOLOGY SERVICE ORDER ISSUE TIME

---

**REFERENCE LIMIT LOWER QUANTITY (RETIRED)**\_ renamed from **REFERENCE LIMIT LOWER QUANTITY**

---

Change to Attribute: Changed Name, Description, status to Retired

~~Specifies the lower value given for a [REFERENCE LIMIT](#) in the reporting of a [CLINICAL INVESTIGATION RESULT ITEM](#).~~ **This item has been retired from the NHS Data Model and Dictionary.**

References:

~~The Version 1.1 NHS Standard EDIFACT Messages for Pathology Requests and Reports, 2001  
The Version 1.0 Trial NHS Standard EDIFACT Messages for GP Hospital Communications – 17.5.95~~ **The last live version of this item is available in the March 2019 release of the NHS Data Model and Dictionary.**

Access to this version can be obtained by emailing [information.standards@nhs.net](mailto:information.standards@nhs.net) with "NHS Data Model and Dictionary - Archive Request" in the email subject line.

---

**REFERENCE LIMIT LOWER QUANTITY (RETIRED)**\_ renamed from **REFERENCE LIMIT LOWER QUANTITY**

---

Change to Attribute: Changed Name, Description, status to Retired

- Changed Name from Data\_Dictionary.Attributes.R.Red.REFERENCE\_LIMIT\_LOWER\_QUANTITY to Retired.Data\_Dictionary.Attributes.R.REFERENCE\_LIMIT\_LOWER\_QUANTITY
- Changed Description
- Retired REFERENCE LIMIT LOWER QUANTITY

---

**REFERENCE LIMIT POPULATION DESCRIPTION (RETIRED)**\_ renamed from **REFERENCE LIMIT POPULATION DESCRIPTION**

---

Change to Attribute: Changed Name, Description, status to Retired

~~Specifies the population group for which values given for a [REFERENCE LIMIT](#), in the reporting of a [CLINICAL INVESTIGATION RESULT ITEM](#), apply.~~ **This item has been retired from the NHS Data Model and Dictionary.**

References:

~~The Version 1.1 NHS Standard EDIFACT Messages for Pathology Requests and Reports, 2001~~  
~~The Version 1.0 Trial NHS Standard EDIFACT Messages for GP Hospital Communications – 17.5.95~~  
**The last live version of this item is available in the March 2019 release of the NHS Data Model and Dictionary.**

**Access to this version can be obtained by emailing [information.standards@nhs.net](mailto:information.standards@nhs.net) with "NHS Data Model and Dictionary - Archive Request" in the email subject line.**

---

**REFERENCE LIMIT POPULATION DESCRIPTION (RETIRED)\_ renamed from REFERENCE LIMIT POPULATION DESCRIPTION**

---

Change to Attribute: Changed Name, Description, status to Retired

- Changed Name from Data\_Dictionary.Attributes.R.Red.REFERENCE\_LIMIT\_POPULATION\_DESCRIPTION to Retired.Data\_Dictionary.Attributes.R.REFERENCE\_LIMIT\_POPULATION\_DESCRIPTION
- Changed Description
- Retired REFERENCE LIMIT POPULATION DESCRIPTION

---

**REFERENCE LIMIT UNIT OF MEASURE (RETIRED)\_ renamed from REFERENCE LIMIT UNIT OF MEASURE**

---

Change to Attribute: Changed Name, Description, status to Retired

~~The identification of the unit of measurement for a [REFERENCE LIMIT](#).~~  
**This item has been retired from the NHS Data Model and Dictionary.**

References:

~~The Version 1.1 NHS Standard EDIFACT Messages for Pathology Requests and Reports, 2001~~  
~~The Version 1.0 Trial NHS Standard EDIFACT Messages for GP Hospital Communications – 17.5.95~~  
**The last live version of this item is available in the March 2019 release of the NHS Data Model and Dictionary.**

**Access to this version can be obtained by emailing [information.standards@nhs.net](mailto:information.standards@nhs.net) with "NHS Data Model and Dictionary - Archive Request" in the email subject line.**

---

**REFERENCE LIMIT UNIT OF MEASURE (RETIRED)\_ renamed from REFERENCE LIMIT UNIT OF MEASURE**

---

Change to Attribute: Changed Name, Description, status to Retired

- Changed Name from Data\_Dictionary.Attributes.R.Red.REFERENCE\_LIMIT\_UNIT\_OF\_MEASURE to Retired.Data\_Dictionary.Attributes.R.REFERENCE\_LIMIT\_UNIT\_OF\_MEASURE
- Changed Description
- Retired REFERENCE LIMIT UNIT OF MEASURE

---

**REFERENCE LIMIT UPPER QUANTITY (RETIRED)\_ renamed from REFERENCE LIMIT UPPER QUANTITY**

---

Change to Attribute: Changed Name, Description, status to Retired

Specifies the upper value given for a [REFERENCE LIMIT](#) in the reporting of a [CLINICAL INVESTIGATION RESULT ITEM](#). **This item has been retired from the NHS Data Model and Dictionary.**

**References:**

The Version 1.1 NHS Standard EDIFACT Messages for Pathology Requests and Reports, 2004  
The Version 1.0 Trial NHS Standard EDIFACT Messages for GP Hospital Communications – 17.5.95  
**The last live version of this item is available in the March 2019 release of the NHS Data Model and Dictionary.**

**Access to this version can be obtained by emailing [information.standards@nhs.net](mailto:information.standards@nhs.net) with "NHS Data Model and Dictionary - Archive Request" in the email subject line.**

---

**REFERENCE LIMIT UPPER QUANTITY (RETIRED)** renamed from **REFERENCE LIMIT UPPER QUANTITY**

---

Change to Attribute: Changed Name, Description, status to Retired

- Changed Name from Data\_Dictionary.Attributes.R.Red.REFERENCE\_LIMIT\_UPPER\_QUANTITY to Retired.Data\_Dictionary.Attributes.R.REFERENCE\_LIMIT\_UPPER\_QUANTITY
- Changed Description
- Retired REFERENCE LIMIT UPPER QUANTITY

---

**RESULT ITEM STATUS (RETIRED)** renamed from **RESULT ITEM STATUS**

---

Change to Attribute: Changed Name, Description, status to Retired

Indication of the status of a [CLINICAL INVESTIGATION RESULT ITEM](#). **This item has been retired from the NHS Data Model and Dictionary.**

**Classification:** **The last live version of this item is available in the March 2019 release of the NHS Data Model and Dictionary.**

- a. Final (complete) result
- b. Preliminary (Interim) result
- c. Test not available
- d. Unspecified

**References:**

The Version 1.1 NHS Standard EDIFACT Messages for Pathology Requests and Reports, 2004  
**Access to this version can be obtained by emailing [information.standards@nhs.net](mailto:information.standards@nhs.net) with "NHS Data Model and Dictionary - Archive Request" in the email subject line.**

---

**RESULT ITEM STATUS (RETIRED)** renamed from **RESULT ITEM STATUS**

---

Change to Attribute: Changed Name, Description, status to Retired

- Changed Name from Data\_Dictionary.Attributes.R.Resp.RESULT\_ITEM\_STATUS to Retired.Data\_Dictionary.Attributes.R.RESULT\_ITEM\_STATUS
- Changed Description
- Retired RESULT ITEM STATUS

---

#### SAMPLE COLLECTION DATE

---

Change to Attribute: Changed Description

The date that a [SAMPLE](#) collection takes place or the start of a period for [SAMPLE](#) collection.

References:

~~The Version 1.1 NHS Standard EDIFACT Messages for Pathology Requests and Reports, 2001~~

---

#### SAMPLE COLLECTION PERIOD END DATE (RETIRED)\_ renamed from SAMPLE COLLECTION PERIOD END DATE

---

Change to Attribute: Changed Name, Description, status to Retired

Date on which a period of [SAMPLE](#) collection ends. **This item has been retired from the NHS Data Model and Dictionary.**

References:

~~The Version 1.1 NHS Standard EDIFACT Messages for Pathology Requests and Reports, 2001~~ **The last live version of this item is available in the March 2019 release of the NHS Data Model and Dictionary.**

**Access to this version can be obtained by emailing [information.standards@nhs.net](mailto:information.standards@nhs.net) with "NHS Data Model and Dictionary - Archive Request" in the email subject line.**

---

#### SAMPLE COLLECTION PERIOD END DATE (RETIRED)\_ renamed from SAMPLE COLLECTION PERIOD END DATE

---

Change to Attribute: Changed Name, Description, status to Retired

- Changed Name from Data\_Dictionary.Attributes.S.SAMPLE\_COLLECTION\_PERIOD\_END\_DATE to Retired.Data\_Dictionary.Attributes.S.SAMPLE\_COLLECTION\_PERIOD\_END\_DATE
- Changed Description
- Retired SAMPLE COLLECTION PERIOD END DATE

---

#### SAMPLE COLLECTION PERIOD END TIME (RETIRED)\_ renamed from SAMPLE COLLECTION PERIOD END TIME

---

Change to Attribute: Changed Name, Description, status to Retired

Time at which a period of [SAMPLE](#) collection ends. **This item has been retired from the NHS Data Model and Dictionary.**

References:

~~The Version 1.1 NHS Standard EDIFACT Messages for Pathology Requests and Reports, 2004~~  
**The last live version of this item is available in the March 2019 release of the NHS Data Model and Dictionary.**

**Access to this version can be obtained by emailing [information.standards@nhs.net](mailto:information.standards@nhs.net) with "NHS Data Model and Dictionary - Archive Request" in the email subject line.**

---

**SAMPLE COLLECTION PERIOD END TIME (RETIRED)\_ renamed from SAMPLE COLLECTION PERIOD END TIME**

---

Change to Attribute: Changed Name, Description, status to Retired

- Changed Name from Data\_Dictionary.Attributes.S.SAMPLE\_COLLECTION\_PERIOD\_END\_TIME to Retired.Data\_Dictionary.Attributes.S.SAMPLE\_COLLECTION\_PERIOD\_END\_TIME
- Changed Description
- Retired SAMPLE COLLECTION PERIOD END TIME

---

**SAMPLE COLLECTION PROCEDURE (RETIRED)\_ renamed from SAMPLE COLLECTION PROCEDURE**

---

Change to Attribute: Changed Name, Description, status to Retired

~~Procedure directly associated with collection of a [SAMPLE](#) from the subject of investigation.~~  
**This item has been retired from the NHS Data Model and Dictionary.**

References:

~~The Version 1.1 NHS Standard EDIFACT Messages for Pathology Requests and Reports, 2004~~  
**The last live version of this item is available in the March 2019 release of the NHS Data Model and Dictionary.**

**Access to this version can be obtained by emailing [information.standards@nhs.net](mailto:information.standards@nhs.net) with "NHS Data Model and Dictionary - Archive Request" in the email subject line.**

---

**SAMPLE COLLECTION PROCEDURE (RETIRED)\_ renamed from SAMPLE COLLECTION PROCEDURE**

---

Change to Attribute: Changed Name, Description, status to Retired

- Changed Name from Data\_Dictionary.Attributes.S.SAMPLE\_COLLECTION\_PROCEDURE to Retired.Data\_Dictionary.Attributes.S.SAMPLE\_COLLECTION\_PROCEDURE
- Changed Description
- Retired SAMPLE COLLECTION PROCEDURE

---

**SAMPLE COLLECTION TIME**

---

Change to Attribute: Changed Description

~~Time at which a [SAMPLE](#) collection takes place or a period for sample collection begins.~~  
**The time at which a [SAMPLE](#) collection takes place or a period for sample collection begins.**

References:

The Version 1.1 NHS Standard EDIFACT Messages for Pathology Requests and Reports, 2001

---

**SAMPLE HANDLING WARNING (RETIRED)** renamed from **SAMPLE HANDLING WARNING**

---

Change to Attribute: Changed Name, Description, status to Retired

Warning of dangers that a **SAMPLE** presents to those who may come into contact with it. **This item has been retired from the NHS Data Model and Dictionary.**

**Classification:** **The last live version of this item is available in the March 2019 release of the NHS Data Model and Dictionary.**

- a. Sample (known to be) infectious
- b. Sample (known to be) not infectious
- c. Sample infection risk unknown

References:

The Version 1.1 NHS Standard EDIFACT Messages for Pathology Requests and Reports, 2001 **Access to this version can be obtained by emailing [information.standards@nhs.net](mailto:information.standards@nhs.net) with "NHS Data Model and Dictionary - Archive Request" in the email subject line.**

---

**SAMPLE HANDLING WARNING (RETIRED)** renamed from **SAMPLE HANDLING WARNING**

---

Change to Attribute: Changed Name, Description, status to Retired

- Changed Name from Data\_Dictionary.Attributes.S.SAMPLE\_HANDLING\_WARNING to Retired.Data\_Dictionary.Attributes.S.SAMPLE\_HANDLING\_WARNING
  - Changed Description
  - Retired SAMPLE HANDLING WARNING
- 

**SAMPLE IDENTIFIER FOR PROVIDER (RETIRED)** renamed from **SAMPLE IDENTIFIER FOR PROVIDER**

---

Change to Attribute: Changed Name, Description, status to Retired

Identification of a **SAMPLE** by the (**Laboratory**) service provider. **This item has been retired from the NHS Data Model and Dictionary.**

References:

The Version 1.1 NHS Standard EDIFACT Messages for Pathology Requests and Reports, 2001 **The last live version of this item is available in the March 2019 release of the NHS Data Model and Dictionary.**

**Access to this version can be obtained by emailing [information.standards@nhs.net](mailto:information.standards@nhs.net) with "NHS Data Model and Dictionary - Archive Request" in the email subject line.**

---

---

**SAMPLE IDENTIFIER FOR PROVIDER (RETIRED)** renamed from **SAMPLE IDENTIFIER FOR PROVIDER**

---

Change to Attribute: Changed Name, Description, status to Retired

- Changed Name from Data\_Dictionary.Attributes.S.SAMPLE\_IDENTIFIER\_FOR\_PROVIDER to Retired.Data\_Dictionary.Attributes.S.SAMPLE\_IDENTIFIER\_FOR\_PROVIDER
- Changed Description
- Retired SAMPLE IDENTIFIER FOR PROVIDER

---

**SAMPLE IDENTIFIER FOR REQUESTER (RETIRED)** renamed from **SAMPLE IDENTIFIER FOR REQUESTER**

---

Change to Attribute: Changed Name, Description, status to Retired

Identification of a [SAMPLE](#) by the ([Laboratory](#)) service requester. **This item has been retired from the NHS Data Model and Dictionary.**

**References:**

~~The Version 1.1 NHS Standard EDIFACT Messages for Pathology Requests and Reports, 2001~~ **The last live version of this item is available in the March 2019 release of the NHS Data Model and Dictionary.**

**Access to this version can be obtained by emailing [information.standards@nhs.net](mailto:information.standards@nhs.net) with "NHS Data Model and Dictionary - Archive Request" in the email subject line.**

---

**SAMPLE IDENTIFIER FOR REQUESTER (RETIRED)** renamed from **SAMPLE IDENTIFIER FOR REQUESTER**

---

Change to Attribute: Changed Name, Description, status to Retired

- Changed Name from Data\_Dictionary.Attributes.S.SAMPLE\_IDENTIFIER\_FOR\_REQUESTER to Retired.Data\_Dictionary.Attributes.S.SAMPLE\_IDENTIFIER\_FOR\_REQUESTER
- Changed Description
- Retired SAMPLE IDENTIFIER FOR REQUESTER

---

**SAMPLE RECEIPT DATE**

---

Change to Attribute: Changed Description

The date of receipt of a [SAMPLE](#) by a [Laboratory](#).

**References:**

~~The Version 1.1 NHS Standard EDIFACT Messages for Pathology Requests and Reports, 2001.~~

---

**SAMPLE RECEIPT TIME (RETIRED)** renamed from **SAMPLE RECEIPT TIME**

---

Change to Attribute: Changed Name, Description, status to Retired

Time of receipt of a [SAMPLE](#) by a [Laboratory](#). **This item has been retired from the NHS Data Model and Dictionary.**



References:

~~The Version 1.1 NHS Standard EDIFACT Messages for Pathology Requests and Reports, 2001.~~ **The last live version of this item is available in the March 2019 release of the NHS Data Model and Dictionary.**

**Access to this version can be obtained by emailing [information.standards@nhs.net](mailto:information.standards@nhs.net) with "NHS Data Model and Dictionary - Archive Request" in the email subject line.**

---

**SAMPLE RECEIPT TIME (RETIRED)\_ renamed from SAMPLE RECEIPT TIME**

---

Change to Attribute: Changed Name, Description, status to Retired

- Changed Name from Data\_Dictionary.Attributes.S.SAMPLE\_RECEIPT\_TIME to Retired.Data\_Dictionary.Attributes.S.SAMPLE\_RECEIPT\_TIME
- Changed Description
- Retired SAMPLE RECEIPT TIME

---

**SAMPLE TYPE (RETIRED)\_ renamed from SAMPLE TYPE**

---

Change to Attribute: Changed Name, Description, status to Retired

~~Coded identification of type of [SAMPLE](#). Example(s): urine, blood, sputum, swab, synovial fluid.~~ **This item has been retired from the NHS Data Model and Dictionary.**

References:

~~The Version 1.1 NHS Standard EDIFACT Messages for Pathology Requests and Reports, 2001~~ **The last live version of this item is available in the March 2019 release of the NHS Data Model and Dictionary.**

**Access to this version can be obtained by emailing [information.standards@nhs.net](mailto:information.standards@nhs.net) with "NHS Data Model and Dictionary - Archive Request" in the email subject line.**

---

**SAMPLE TYPE (RETIRED)\_ renamed from SAMPLE TYPE**

---

Change to Attribute: Changed Name, Description, status to Retired

- Changed Name from Data\_Dictionary.Attributes.S.SAMPLE\_TYPE to Retired.Data\_Dictionary.Attributes.S.SAMPLE\_TYPE
- Changed Description
- Retired SAMPLE TYPE

---

**SAMPLE UNIT OF MEASURE (RETIRED)\_ renamed from SAMPLE UNIT OF MEASURE**

---

Change to Attribute: Changed Name, Description, status to Retired

~~The identification of the unit of measurement for a [SAMPLE](#).~~ **This item has been retired from the NHS Data Model and Dictionary.**

References:

~~The Version 1.1 NHS Standard EDIFACT Messages for Pathology Requests and Reports, 2001~~  
~~The Version 1.0 Trial NHS Standard EDIFACT Messages for GP-Hospital Communications – 17.5.95~~  
**The last live version of this item is available in the March 2019 release of the NHS Data Model and Dictionary.**

**Access to this version can be obtained by emailing [information.standards@nhs.net](mailto:information.standards@nhs.net) with "NHS Data Model and Dictionary - Archive Request" in the email subject line.**

---

**SAMPLE UNIT OF MEASURE (RETIRED)\_ renamed from SAMPLE UNIT OF MEASURE**

---

Change to Attribute: Changed Name, Description, status to Retired

- Changed Name from Data\_Dictionary.Attributes.S.SAMPLE\_UNIT\_OF\_MEASURE to Retired.Data\_Dictionary.Attributes.S.SAMPLE\_UNIT\_OF\_MEASURE
- Changed Description
- Retired SAMPLE UNIT OF MEASURE

---

**SEDATION REQUIRED INDICATOR (RETIRED)\_ renamed from SEDATION REQUIRED INDICATOR**

---

Change to Attribute: Changed Name, Description, status to Retired

Indication of whether sedation is required for the subject of a radiology [SERVICE ORDER](#) at the time of the examination. **This item has been retired from the NHS Data Model and Dictionary.**

**Classification:** **The last live version of this item is available in the March 2019 release of the NHS Data Model and Dictionary.**

- a. Yes
- b. No

References:

~~The Version 1.0 Trial NHS Standard EDIFACT Messages for Radiology Requests and Reports, 14.3.95~~  
**Access to this version can be obtained by emailing [information.standards@nhs.net](mailto:information.standards@nhs.net) with "NHS Data Model and Dictionary - Archive Request" in the email subject line.**

---

**SEDATION REQUIRED INDICATOR (RETIRED)\_ renamed from SEDATION REQUIRED INDICATOR**

---

Change to Attribute: Changed Name, Description, status to Retired

- Changed Name from Data\_Dictionary.Attributes.S.Scr.SEDATION\_REQUIRED\_INDICATOR to Retired.Data\_Dictionary.Attributes.S.SEDATION\_REQUIRED\_INDICATOR
- Changed Description
- Retired SEDATION REQUIRED INDICATOR

---

**SERVICE ORDER IDENTIFIER (RETIRED)\_ renamed from SERVICE ORDER IDENTIFIER**

---

Change to Attribute: Changed Name, Description, status to Retired

The unique identifier of a [SERVICE ORDER](#) as allocated by the requester of the service. **This item has been retired from the NHS Data Model and Dictionary.**

**The last live version of this item is available in the March 2019 release of the NHS Data Model and Dictionary.**

**Access to this version can be obtained by emailing [information.standards@nhs.net](mailto:information.standards@nhs.net) with "NHS Data Model and Dictionary - Archive Request" in the email subject line.**

---

**SERVICE ORDER IDENTIFIER (RETIRED)\_** renamed from **SERVICE ORDER IDENTIFIER**

---

Change to Attribute: Changed Name, Description, status to Retired

- Changed Name from Data\_Dictionary.Attributes.S.Ser.SERVICE\_ORDER\_IDENTIFIER to Retired.Data\_Dictionary.Attributes.S.SERVICE\_ORDER\_IDENTIFIER
- Changed Description
- Retired SERVICE ORDER IDENTIFIER

---

**TRANSPORT TYPE FOR SAMPLE COLLECTED (RETIRED)\_** renamed from **TRANSPORT TYPE FOR SAMPLE COLLECTED**

---

Change to Attribute: Changed Name, Description, status to Retired

Means by which a [SAMPLE](#) is to reach the [Laboratory](#). **This item has been retired from the NHS Data Model and Dictionary.**

**Classification:** **The last live version of this item is available in the March 2019 release of the NHS Data Model and Dictionary.**

- a. ~~Established transport system~~
- b. ~~Patient delivering sample~~
- c. ~~Patient attending laboratory~~
- d. ~~Doctor delivering sample~~
- e. ~~Public postal service~~

**References:**

The Version 1.1 NHS Standard EDIFACT Messages for Pathology Requests and Reports, 2004 **Access to this version can be obtained by emailing [information.standards@nhs.net](mailto:information.standards@nhs.net) with "NHS Data Model and Dictionary - Archive Request" in the email subject line.**

---

**TRANSPORT TYPE FOR SAMPLE COLLECTED (RETIRED)\_** renamed from **TRANSPORT TYPE FOR SAMPLE COLLECTED**

---

Change to Attribute: Changed Name, Description, status to Retired

- Changed Name from Data\_Dictionary.Attributes.T.Tran.TRANSPORT\_TYPE\_FOR\_SAMPLE\_COLLECTED to Retired.Data\_Dictionary.Attributes.T.TRANSPORT\_TYPE\_FOR\_SAMPLE\_COLLECTED

- Changed Description
- Retired TRANSPORT TYPE FOR SAMPLE COLLECTED

---

## UNIT OF MEASUREMENT

---

Change to Attribute: Changed Description

The unit of measurement.

### *National Codes:*

- |    |   |
|----|---|
| 01 | Millimoles per litre (mmol/L)             |
| 02 | Micromoles per litre (µmol/L)             |
| 03 | Micrograms per litre (µg/L)               |
| 04 | Micrograms per millimole (µg/mmol)        |
| 05 | Microgram albumin per hour (µg/ml/hr)     |
| 06 | Microgram albumin per minute (µg/min)     |
| 07 | Microgram albumin per 24 hours (µg/24hr)  |
| 08 | Number (Retired September 2013)           |
| 09 | Percentage (%)                            |
| 10 | Kilograms (kg)                            |
| 11 | Metres (m)                                |
| 12 | Picograms (pg)                            |
| 13 | Square Metres (m <sup>2</sup> )           |
| 14 | Millilitres per Minute (ml/min)           |
| 15 | Millimetres of mercury (mmHg)             |
| 16 | Litres (l)                                |
| 17 | Beats per minute (bpm)                    |
| 18 | Centimetres (cm)                          |
| 19 | Milligrams (mg)                           |
| 20 | Millilitres (ml)                          |
| 21 | Minutes                                   |
| 22 | Celsius (°C)                              |
| 23 | Millimetres (mm)                          |
| 24 | Grams per decilitre (g/dl)                |
| 25 | Grams per litre (g/l)                     |
| 26 | Milligrams per litre (mg/l)               |
| 27 | Nanograms per millilitre (ng/ml)          |
| 28 | International Units per litre (IU/L)      |
| 29 | Decilitres (d/l)                          |
| 30 | Square Millimetres (mm <sup>2</sup> )     |
| 31 | Millilitres (ml) (Retired September 2013) |
| 32 | Grays (Gy)                                |
| 33 | International Units per kilogram (IU/kg)  |
| 34 | Grams (g)                                 |
| 35 | Kilocalories (kcal)                       |
| 36 | Millimoles (mmol)                         |

- 37 Millimoles per mole (mmol/mol)
- 38 Picomoles per litre (pmol/L)
- 39 Milligrams per millimole (mg/mmol)
- 40 Nanograms per litre (ng/l)
- 41 Micrograms per millilitre ( $\mu\text{g/ml}$ )
- 42 Millimetres of water ( $\text{mmH}^2\text{O}$ )
- 43 Cubic Millimetres ( $\text{mm}^3$ )
- 44 Litres per week per 1.73 metres squared ( $\text{l/week}/1.73^2$ )
- 45 Millilitres per Minute divided by 1.73 Square Metres ( $\text{ml/min}/1.73\text{m}^2$ )
- 46 number times ten raised to the power of nine per litre ( $\times 10^9/\text{l}$ )
- 47 5 Millimetres Squared
- 48 Grams per kilogram per day (g/kg/day)
- 49 Kilopascals (KPa)
- 50 Femtolitres (fl)
- 51 Megavolts
- 52 5 Millimetres Squared

**References:**

~~The Version 1.1 NHS Standard EDIFACT Messages for Pathology Requests and Reports, 2001~~

~~The Version 1.0 Trial NHS Standard EDIFACT Messages for GP Hospital Communications – 17.5.95~~

---

For enquiries about this Change Request, please email [information.standards@nhs.net](mailto:information.standards@nhs.net)

