

# NHS Data Model and Dictionary



**Type:** Change Request  
**Reference:** 1499  
**Version No:** 1.0  
**Subject:** Retirement of NHS Health Checks Data Set  
**Effective Date:** Immediate  
**Reason for Change:** Retirement of Data Set  
**Publication Date:** 17 April 2019

## Background:

As part of the ongoing work to implement a new version of the NHS Data Model and Dictionary, a review of legacy and out of date data sets contained within the NHS Data Model and Dictionary has been carried out.

A number of data sets are out of date and have been identified for retirement from the NHS Data Model and Dictionary. Note that the associated Data Coordination Board (DCB) Information Standard will not be retired at this stage.

This Change Request retires the NHS Health Checks Data Set and associated definitions not used in any other data set from the NHS Data Model and Dictionary.

To view a demonstration on "How to Read an NHS Data Model and Dictionary Change Request", visit the NHS Data Model and Dictionary help pages at: [http://www.datadictionary.nhs.uk/Flash\\_Files/changerequest.htm](http://www.datadictionary.nhs.uk/Flash_Files/changerequest.htm).

Note: if the web page does not open, please copy the link and paste into the web browser.

## Summary of changes:

### Diagrams

[PRESCRIBING AND DISPENSING DIAGRAM](#)

Changed Diagram

### Data Set

[NHS HEALTH CHECKS DATA SET \(RETIRED\)](#) renamed from [NHS HEALTH CHECKS DATA SET](#)

Changed status to Retired, Name, Description

### Supporting Information

[BRIEF INTERVENTION \(RETIRED\)](#) renamed from [BRIEF INTERVENTION](#)

Changed status to Retired, Name, Description

[CARDIOVASCULAR DISEASE RISK CALCULATOR \(RETIRED\)](#) renamed from [CARDIOVASCULAR DISEASE RISK CALCULATOR](#)

Changed status to Retired, Name, Description

[CLINICAL DATA SETS MENU](#)

Changed Description

[CLINICAL DATA SETS MESSAGE DOCUMENTATION](#)

Changed Description

[CLINICAL DATA SETS MESSAGE DOCUMENTATION MENU](#)

Changed Description

[NHS HEALTH CHECK ASSESSMENT \(RETIRED\)](#) renamed from [NHS HEALTH CHECK ASSESSMENT](#)

Changed status to Retired, Name, Description

[NHS HEALTH CHECK PROGRAMME \(RETIRED\)](#) renamed from [NHS HEALTH CHECK PROGRAMME](#)

Changed status to Retired, Name, Description

[SIGNPOSTING \(RETIRED\)](#) renamed from [SIGNPOSTING](#)

Changed status to Retired, Name, Description

[SURVEILLANCE PROGRAMME \(RETIRED\)](#) renamed from [SURVEILLANCE PROGRAMME](#)

Changed status to Retired, Name, Description

[SURVEILLANCE PROGRAMME STAGE \(RETIRED\)](#) renamed from [SURVEILLANCE PROGRAMME STAGE](#)

Changed status to Retired, Name, Description

[XML SCHEMA TRUD DOWNLOAD](#)

Changed Description

### Class Definitions

[ACTIVITY GROUP](#)

Changed Attributes

[APPOINTMENT](#)

Changed Attributes

[CARE CONTACT](#)

Changed Attributes

[HEALTH PROGRAMME POPULATION \(RETIRED\)](#) renamed from [HEALTH PROGRAMME POPULATION](#)

Changed Relationships, Attributes, status to Retired, Name, Description

[PATIENT DIAGNOSIS](#)

Changed Attributes

[PERSON PHYSICAL ACTIVITY LEVEL](#)

Changed Attributes

[PLANNED ACTIVITY](#)

Changed Attributes

[PRESCRIPTION](#)

Changed Attributes

[REFERRAL REQUEST](#)

Changed Attributes

## Attribute Definitions

<a href="#">ASSESSMENT TOOL TYPE</a>	Changed Description
<a href="#">BRIEF INTERVENTION PROVIDED INDICATOR (RETIRED)</a> renamed from <a href="#">BRIEF INTERVENTION PROVIDED INDICATOR</a>	Changed status to Retired, Name, Description
<a href="#">BRIEF INTERVENTION TYPE FOR NHS HEALTH CHECK (RETIRED)</a> renamed from <a href="#">BRIEF INTERVENTION TYPE FOR NHS HEALTH CHECK</a>	Changed status to Retired, Name, Description
<a href="#">CARE CONTACT TYPE</a>	Changed Description
<a href="#">DECISION TO UNDERTAKE FURTHER ASSESSMENT INDICATOR (RETIRED)</a> renamed from <a href="#">DECISION TO UNDERTAKE FURTHER ASSESSMENT INDICATOR</a>	Changed status to Retired, Name, Description
<a href="#">FURTHER ASSESSMENT TYPE FOR NHS HEALTH CHECK (RETIRED)</a> renamed from <a href="#">FURTHER ASSESSMENT TYPE FOR NHS HEALTH CHECK</a>	Changed status to Retired, Name, Description
<a href="#">HEALTH PROGRAMME TYPE</a>	Changed Description
<a href="#">INFORMATION AND ADVICE TYPE PROVIDED FOR NHS HEALTH CHECK (RETIRED)</a> renamed from <a href="#">INFORMATION AND ADVICE TYPE PROVIDED FOR NHS HEALTH CHECK</a>	Changed status to Retired, Name, Description
<a href="#">INVITATION OFFER SENT INDICATOR (RETIRED)</a> renamed from <a href="#">INVITATION OFFER SENT INDICATOR</a>	Changed status to Retired, Name, Description
<a href="#">PATIENT DIAGNOSIS TYPE FOR NHS HEALTH CHECK (RETIRED)</a> renamed from <a href="#">PATIENT DIAGNOSIS TYPE FOR NHS HEALTH CHECK</a>	Changed status to Retired, Name, Description
<a href="#">PHYSICAL ACTIVITY LEVEL (RETIRED)</a> renamed from <a href="#">PHYSICAL ACTIVITY LEVEL</a>	Changed status to Retired, Name, Description
<a href="#">PRESCRIPTION PROVIDED INDICATOR (RETIRED)</a> renamed from <a href="#">PRESCRIPTION PROVIDED INDICATOR</a>	Changed status to Retired, Name, Description
<a href="#">PRESCRIPTION TYPE PROVIDED FOR NHS HEALTH CHECK (RETIRED)</a> renamed from <a href="#">PRESCRIPTION TYPE PROVIDED FOR NHS HEALTH CHECK</a>	Changed status to Retired, Name, Description
<a href="#">REFERRAL REQUEST ACCEPTANCE INDICATOR (RETIRED)</a> renamed from <a href="#">REFERRAL REQUEST ACCEPTANCE INDICATOR</a>	Changed status to Retired, Name, Description
<a href="#">REFERRAL REQUEST SERVICE TYPE FOR NHS HEALTH CHECK (RETIRED)</a> renamed from <a href="#">REFERRAL REQUEST SERVICE TYPE FOR NHS HEALTH CHECK</a>	Changed status to Retired, Name, Description
<a href="#">SIGNPOSTING TO SERVICE INDICATOR (RETIRED)</a> renamed from <a href="#">SIGNPOSTING TO SERVICE INDICATOR</a>	Changed status to Retired, Name, Description
<a href="#">SIGNPOSTING TO SERVICE TYPE FOR NHS HEALTH CHECK (RETIRED)</a> renamed from <a href="#">SIGNPOSTING TO SERVICE TYPE FOR NHS HEALTH CHECK</a>	Changed status to Retired, Name, Description
<a href="#">SMOKING STATUS</a>	Changed Description
<a href="#">TARGET POPULATION (RETIRED)</a> renamed from <a href="#">TARGET POPULATION</a>	Changed status to Retired, Name, Description

## Data Elements

<a href="#">ACTIVITY LOCATION TYPE CODE (NHS HEALTH CHECK) (RETIRED)</a> renamed from <a href="#">ACTIVITY LOCATION TYPE CODE (NHS HEALTH CHECK)</a>	Changed status to Retired, Name, Description
<a href="#">AGE AT ATTENDANCE DATE</a>	Changed Description
<a href="#">BRIEF INTERVENTION PROVIDED INDICATOR (PHYSICAL ACTIVITY BRIEF) (RETIRED)</a> renamed from <a href="#">BRIEF INTERVENTION PROVIDED INDICATOR (PHYSICAL ACTIVITY BRIEF)</a>	Changed linked Attribute, status to Retired, Name, Description
<a href="#">CARDIOVASCULAR DISEASE RISK SCORE (RETIRED)</a> renamed from <a href="#">CARDIOVASCULAR DISEASE RISK SCORE</a>	Changed linked Attribute, status to Retired, Name, Description
<a href="#">ELIGIBLE POPULATION TOTAL (NHS HEALTH CHECK) (RETIRED)</a> renamed from <a href="#">ELIGIBLE POPULATION TOTAL (NHS HEALTH CHECK)</a>	Changed status to Retired, Name, Description
<a href="#">FURTHER ASSESSMENT REQUIRED INDICATOR (DIABETES ASSESSMENT) (RETIRED)</a> renamed from <a href="#">FURTHER ASSESSMENT REQUIRED INDICATOR (DIABETES ASSESSMENT)</a>	Changed linked Attribute, status to Retired, Name, Description
<a href="#">FURTHER ASSESSMENT REQUIRED INDICATOR (FASTING CHOLESTEROL ASSESSMENT) (RETIRED)</a> renamed from <a href="#">FURTHER ASSESSMENT REQUIRED INDICATOR (FASTING CHOLESTEROL ASSESSMENT)</a>	Changed linked Attribute, status to Retired, Name, Description
<a href="#">FURTHER ASSESSMENT REQUIRED INDICATOR (HYPERTENSION ASSESSMENT) (RETIRED)</a> renamed from <a href="#">FURTHER ASSESSMENT REQUIRED INDICATOR (HYPERTENSION ASSESSMENT)</a>	Changed linked Attribute, status to Retired, Name, Description
<a href="#">FURTHER ASSESSMENT REQUIRED INDICATOR (IMPAIRED FASTING GLYCAEMIA IMPAIRED GLUCOSE TOLERANCE LIFESTYLE MANAGEMENT) (RETIRED)</a> renamed from <a href="#">FURTHER ASSESSMENT REQUIRED INDICATOR (IMPAIRED FASTING GLYCAEMIA IMPAIRED GLUCOSE TOLERANCE LIFESTYLE MANAGEMENT)</a>	Changed linked Attribute, status to Retired, Name, Description
<a href="#">FURTHER ASSESSMENT REQUIRED INDICATOR (SERUM CREATININE ASSESSMENT) (RETIRED)</a> renamed from <a href="#">FURTHER ASSESSMENT REQUIRED INDICATOR (SERUM CREATININE ASSESSMENT)</a>	Changed linked Attribute, status to Retired, Name, Description
<a href="#">INFORMATION AND ADVICE PROVIDED INDICATOR (GENERAL LIFESTYLE ADVICE) (RETIRED)</a> renamed from <a href="#">INFORMATION AND ADVICE PROVIDED INDICATOR (GENERAL LIFESTYLE ADVICE)</a>	Changed linked Attribute, status to Retired, Name, Description
<a href="#">INFORMATION AND ADVICE PROVIDED INDICATOR (STOP SMOKING ADVICE) (RETIRED)</a> renamed from <a href="#">INFORMATION AND ADVICE PROVIDED INDICATOR (STOP SMOKING ADVICE)</a>	Changed linked Attribute, status to Retired, Name, Description
<a href="#">INFORMATION AND ADVICE PROVIDED INDICATOR (WEIGHT MANAGEMENT ADVICE) (RETIRED)</a> renamed from <a href="#">INFORMATION AND ADVICE PROVIDED INDICATOR (WEIGHT MANAGEMENT ADVICE)</a>	Changed linked Attribute, status to Retired, Name, Description
<a href="#">INVITATION OFFER SENT INDICATOR (NHS HEALTH CHECK) (RETIRED)</a> renamed from <a href="#">INVITATION OFFER SENT INDICATOR (NHS HEALTH CHECK)</a>	Changed linked Attribute, status to Retired, Name, Description

<a href="#">LOWER LAYER SUPER OUTPUT AREA (PERSON RESIDENCE)</a>		Changed linked Attribute, status to Retired, Name, Description
<a href="#">LOWER LAYER SUPER OUTPUT AREA (RESIDENCE) (RETIRED)</a> renamed from <a href="#">LOWER LAYER SUPER OUTPUT AREA (RESIDENCE)</a>		Changed Description
<a href="#">ORGANISATION CODE (NHS HEALTH CHECK PROVIDER) (RETIRED)</a> renamed from <a href="#">ORGANISATION CODE (NHS HEALTH CHECK PROVIDER)</a>		Changed status to Retired, Name, Description
<a href="#">PATIENT DIAGNOSIS INDICATOR (CHRONIC KIDNEY DISEASE STAGE 3) (RETIRED)</a> renamed from <a href="#">PATIENT DIAGNOSIS INDICATOR (CHRONIC KIDNEY DISEASE STAGE 3)</a>		Changed linked Attribute, status to Retired, Name, Description
<a href="#">PATIENT DIAGNOSIS INDICATOR (CHRONIC KIDNEY DISEASE STAGE 4) (RETIRED)</a> renamed from <a href="#">PATIENT DIAGNOSIS INDICATOR (CHRONIC KIDNEY DISEASE STAGE 4)</a>		Changed linked Attribute, status to Retired, Name, Description
<a href="#">PATIENT DIAGNOSIS INDICATOR (CHRONIC KIDNEY DISEASE STAGE 5) (RETIRED)</a> renamed from <a href="#">PATIENT DIAGNOSIS INDICATOR (CHRONIC KIDNEY DISEASE STAGE 5)</a>		Changed linked Attribute, status to Retired, Name, Description
<a href="#">PATIENT DIAGNOSIS INDICATOR (HYPERTENSION) (RETIRED)</a> renamed from <a href="#">PATIENT DIAGNOSIS INDICATOR (HYPERTENSION)</a>		Changed linked Attribute, status to Retired, Name, Description
<a href="#">PATIENT DIAGNOSIS INDICATOR (NON DIABETIC HYPERGLYCAEMIA) (RETIRED)</a> renamed from <a href="#">PATIENT DIAGNOSIS INDICATOR (NON DIABETIC HYPERGLYCAEMIA)</a>		Changed linked Attribute, status to Retired, Name, Description
<a href="#">PATIENT DIAGNOSIS INDICATOR (TYPE 2 DIABETES) (RETIRED)</a> renamed from <a href="#">PATIENT DIAGNOSIS INDICATOR (TYPE 2 DIABETES)</a>		Changed linked Attribute, status to Retired, Name, Description
<a href="#">PHYSICAL ACTIVITY LEVEL (RETIRED)</a> renamed from <a href="#">PHYSICAL ACTIVITY LEVEL</a>		Changed linked Attribute, status to Retired, Name, Description
<a href="#">PRESCRIPTION PROVIDED INDICATOR (ANTI-HYPERTENSIVES) (RETIRED)</a> renamed from <a href="#">PRESCRIPTION PROVIDED INDICATOR (ANTI-HYPERTENSIVES)</a>		Changed linked Attribute, status to Retired, Name, Description
<a href="#">PRESCRIPTION PROVIDED INDICATOR (STATINS) (RETIRED)</a> renamed from <a href="#">PRESCRIPTION PROVIDED INDICATOR (STATINS)</a>		Changed linked Attribute, status to Retired, Name, Description
<a href="#">REFERRAL TO SERVICE ACCEPTANCE INDICATOR (PHYSICAL ACTIVITY SERVICE) (RETIRED)</a> renamed from <a href="#">REFERRAL TO SERVICE ACCEPTANCE INDICATOR (PHYSICAL ACTIVITY SERVICE)</a>		Changed linked Attribute, status to Retired, Name, Description
<a href="#">REFERRAL TO SERVICE ACCEPTANCE INDICATOR (STOP SMOKING SERVICE) (RETIRED)</a> renamed from <a href="#">REFERRAL TO SERVICE ACCEPTANCE INDICATOR (STOP SMOKING SERVICE)</a>		Changed linked Attribute, status to Retired, Name, Description
<a href="#">REFERRAL TO SERVICE ACCEPTANCE INDICATOR (WEIGHT MANAGEMENT SERVICE) (RETIRED)</a> renamed from <a href="#">REFERRAL TO SERVICE ACCEPTANCE INDICATOR (WEIGHT MANAGEMENT SERVICE)</a>		Changed linked Attribute, status to Retired, Name, Description
<a href="#">SIGNPOSTING TO SERVICE INDICATOR (PHYSICAL ACTIVITY SERVICE) (RETIRED)</a> renamed from <a href="#">SIGNPOSTING TO SERVICE INDICATOR (PHYSICAL ACTIVITY SERVICE)</a>		Changed linked Attribute, status to Retired, Name, Description
<a href="#">SIGNPOSTING TO SERVICE INDICATOR (STOP SMOKING SERVICE) (RETIRED)</a> renamed from <a href="#">SIGNPOSTING TO SERVICE INDICATOR (STOP SMOKING SERVICE)</a>		Changed linked Attribute, status to Retired, Name, Description
<a href="#">SIGNPOSTING TO SERVICE INDICATOR (WEIGHT MANAGEMENT SERVICE) (RETIRED)</a> renamed from <a href="#">SIGNPOSTING TO SERVICE INDICATOR (WEIGHT MANAGEMENT SERVICE)</a>		Changed linked Attribute, status to Retired, Name, Description
<a href="#">SMOKING STATUS CODE</a>		Changed Description
<a href="#">TOTAL CHOLESTEROL HIGH DENSITY LIPOPROTEIN RATIO (RETIRED)</a> renamed from <a href="#">TOTAL CHOLESTEROL HIGH DENSITY LIPOPROTEIN RATIO</a>		Changed status to Retired, Name, Description
<a href="#">TOTAL CHOLESTEROL LEVEL (RETIRED)</a> renamed from <a href="#">TOTAL CHOLESTEROL LEVEL</a>		Changed status to Retired, Name, Description
<b><u>XML Schema Constraint</u></b>		
<a href="#">NHS HEALTH CHECKS DATA SET XML SCHEMA CONSTRAINTS (RETIRED)</a> renamed from <a href="#">NHS HEALTH CHECKS DATA SET XML SCHEMA CONSTRAINTS</a>		Changed status to Retired, Name, Description

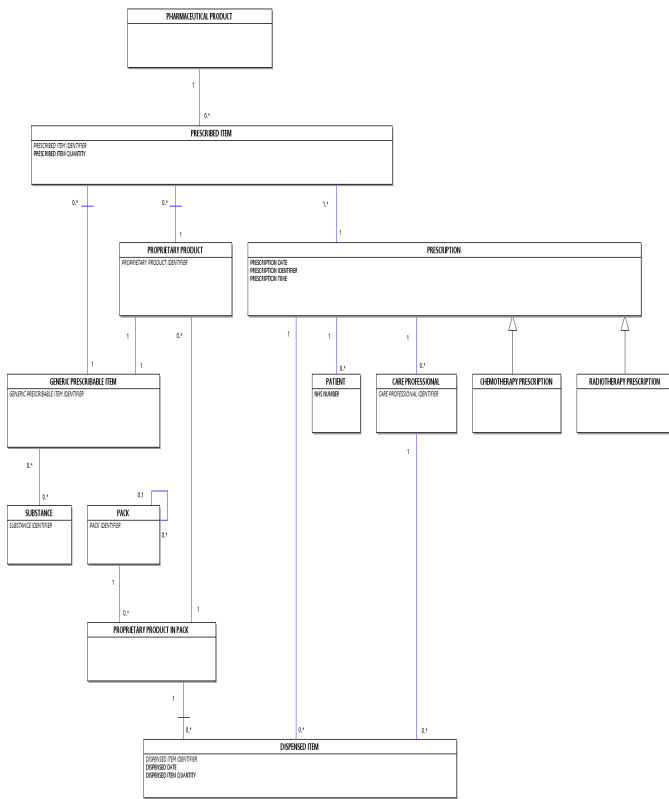
**Date:** 17 April 2019

**Sponsor:** Nicholas Oughtibridge, Head of Business and Operational Delivery, NHS Digital

**Note:** New text is shown with a blue background. Deleted text is crossed out. Retired text is shown in grey. Within the Diagrams deleted classes and relationships are red, changed items are blue and new items are green.

**PRESCRIBING AND DISPENSING DIAGRAM**

Change to Diagram: Changed Diagram



**NHS HEALTH CHECKS DATA SET (RETIRED), renamed from NHS HEALTH CHECKS DATA SET**

Change to Data Set: Changed status to Retired, Name, Description

[NHS Health Checks Data Set Overview](#) The NHS Health Checks Data Set has been retired from the NHS Data Model and Dictionary as at March 2019.

The Mandatory or Required (M/R) column indicates the recommendation for the inclusion of data: The last live version of this item is available in the March 2019 release of the NHS Data Model and Dictionary.

- M = Mandatory: this data element is mandatory and the technical process (e.g. submission of the data set, production of output etc) cannot be completed without this data element being present
- R = Required: NHS business processes cannot be delivered without this data element.

For guidance on downloading the XML Schema, see [XML Schema TRUD Download](#). Access to this version can be obtained by emailing [information.standards@nhs.net](mailto:information.standards@nhs.net) with "NHS Data Model and Dictionary - Archive Request" in the email subject line.

For guidance on the XML Schema constraints, see the [NHS Health Checks Data Set XML Schema Constraints](#).

Reporting Period Details: To carry the details of the reporting period and the eligible population.	
M/R	Data-Set-Data-Elements
M	<a href="#">REPORTING PERIOD START DATE</a>
M	<a href="#">REPORTING PERIOD END DATE</a>
M	<a href="#">ELIGIBLE POPULATION TOTAL (NHS HEALTH CHECK)</a>
Organisation Details: To carry the details of the provider and commissioner organisations for the NHS Health Check.	
M/R	Data-Set-Data-Elements
M	<a href="#">ORGANISATION CODE (NHS HEALTH CHECK PROVIDER)</a>
M	<a href="#">ORGANISATION CODE (CODE OF COMMISSIONER)</a>
Person Demographics: To carry the demographic details of the person.	
M/R	Data-Set-Data-Elements
M	<a href="#">LOWER LAYER SUPER OUTPUT AREA (RESIDENCE)</a>
M	<a href="#">AGE AT ATTENDANCE DATE</a>
M	<a href="#">PERSON GENDER CODE CURRENT</a>
M	<a href="#">ETHNIC CATEGORY</a>

Health Check Person Record: To carry the details of the person's NHS Health Check invitation.	
M/R	Data Set-Data Elements
R	<a href="#">INVITATION OFFER SENT INDICATOR (NHS HEALTH CHECK)</a>
Health Check Person Assessment: To carry the details of the person's NHS Health Check Assessment.	
M/R	Data Set-Data Elements
M	<a href="#">ACTIVITY LOCATION TYPE CODE (NHS HEALTH CHECK)</a>
M	<a href="#">BODY MASS INDEX</a>
M	<a href="#">BLOOD PRESSURE SITTING</a>
M	<a href="#">TOTAL CHOLESTEROL HIGH DENSITY LIPOPROTEIN RATIO</a>
M	<a href="#">TOTAL CHOLESTEROL LEVEL</a>
M	<a href="#">PHYSICAL ACTIVITY LEVEL</a>
M	<a href="#">SMOKING STATUS CODE</a>
M	<a href="#">CARDIOVASCULAR DISEASE RISK SCORE</a>
Health Check Information and Advice: To carry the details of information and advice provided at an NHS Health Check Assessment.	
M/R	Data Set-Data Elements
R	<a href="#">INFORMATION AND ADVICE PROVIDED INDICATOR (GENERAL LIFESTYLE ADVICE)</a>
R	<a href="#">INFORMATION AND ADVICE PROVIDED INDICATOR (STOP SMOKING ADVICE)</a>
R	<a href="#">INFORMATION AND ADVICE PROVIDED INDICATOR (WEIGHT MANAGEMENT ADVICE)</a>
Health Check Brief Interventions Provided: To carry the details of brief interventions provided at an NHS Health Check Assessment.	
M/R	Data Set-Data Elements
R	<a href="#">BRIEF INTERVENTION PROVIDED INDICATOR (PHYSICAL ACTIVITY BRIEF)</a>
Health Check Signposting: To carry the details of signposting to services provided at an NHS Health Check Assessment.	
M/R	Data Set-Data Elements
R	<a href="#">SIGNPOSTING TO SERVICE INDICATOR (PHYSICAL ACTIVITY SERVICE)</a>
R	<a href="#">SIGNPOSTING TO SERVICE INDICATOR (STOP SMOKING SERVICE)</a>
R	<a href="#">SIGNPOSTING TO SERVICE INDICATOR (WEIGHT MANAGEMENT SERVICE)</a>
Health Check Referrals: To carry the details of referrals for services made at an NHS Health Check Assessment.	
M/R	Data Set-Data Elements
R	<a href="#">REFERRAL TO SERVICE ACCEPTANCE INDICATOR (PHYSICAL ACTIVITY SERVICE)</a>
R	<a href="#">REFERRAL TO SERVICE ACCEPTANCE INDICATOR (STOP SMOKING SERVICE)</a>
R	<a href="#">REFERRAL TO SERVICE ACCEPTANCE INDICATOR (WEIGHT MANAGEMENT SERVICE)</a>
Health Check Further Assessments Required: To carry the details of further assessments required following an NHS Health Check Assessment.	
M/R	Data Set-Data Elements
R	<a href="#">FURTHER ASSESSMENT REQUIRED INDICATOR (DIABETES ASSESSMENT)</a>
R	<a href="#">FURTHER ASSESSMENT REQUIRED INDICATOR (SERUM CREATININE ASSESSMENT)</a>
R	<a href="#">FURTHER ASSESSMENT REQUIRED INDICATOR (HYPERTENSION ASSESSMENT)</a>
R	<a href="#">FURTHER ASSESSMENT REQUIRED INDICATOR (FASTING CHOLESTEROL ASSESSMENT)</a>
R	<a href="#">FURTHER ASSESSMENT REQUIRED INDICATOR (IMPAIRED FASTING GLYCAEMIA IMPAIRED GLUCOSE TOLERANCE LIFESTYLE MANAGEMENT)</a>
Health Check Prescriptions: To carry the details of the prescriptions provided as a result of an NHS Health Check Assessment.	
M/R	Data Set-Data Elements
R	<a href="#">PRESCRIPTION PROVIDED INDICATOR (STATINS)</a>
R	<a href="#">PRESCRIPTION PROVIDED INDICATOR (ANTI HYPERTENSIVES)</a>
Health Check Diagnosis: To carry the details of the diagnosis provided as a result of an NHS Health Check Assessment.	
M/R	Data Set-Data Elements
R	<a href="#">PATIENT DIAGNOSIS INDICATOR (CHRONIC KIDNEY DISEASE STAGE 3)</a>
R	<a href="#">PATIENT DIAGNOSIS INDICATOR (CHRONIC KIDNEY DISEASE STAGE 4)</a>
R	<a href="#">PATIENT DIAGNOSIS INDICATOR (CHRONIC KIDNEY DISEASE STAGE 5)</a>
R	<a href="#">PATIENT DIAGNOSIS INDICATOR (TYPE 2 DIABETES)</a>
R	<a href="#">PATIENT DIAGNOSIS INDICATOR (HYPERTENSION)</a>
R	<a href="#">PATIENT DIAGNOSIS INDICATOR (NON DIABETIC HYPERGLYCAEMIA)</a>

**NHS HEALTH CHECKS DATA SET (RETIRED), renamed from NHS HEALTH CHECKS DATA SET**

Change to Data Set: Changed status to Retired, Name, Description

- Retired NHS Health Checks Data Set
- Changed Name from Data\_Dictionary.Messages.Clinical\_Data\_Sets.Data\_Sets.NHS\_Health\_Checks\_Data\_Set to Retired.Data\_Dictionary.Messages.Clinical\_Data\_Sets.NHS\_Health\_Checks\_Data\_Set
- Changed Description

BRIEF INTERVENTION (RETIRED), renamed from BRIEF INTERVENTION

---

Change to Supporting Information: Changed status to Retired, Name, Description

A [Brief Intervention](#) is a short structured technique aimed at helping people change their lifestyles for the better. **This item has been retired from the NHS Data Model and Dictionary.**

For example, as part of an [NHS Health Check Assessment](#) a [Brief Intervention](#) for smoking would consist of: **The last live version of this item is available in the March 2019 release of the NHS Data Model and Dictionary.**

- asking and recording the [PATIENT](#)'s [SMOKING STATUS](#)
- advising the [PATIENT](#) of the benefits of stopping smoking and acting upon the [PATIENT](#)'s response

The approach used in [Brief Interventions](#) is evidence based. **Access to this version can be obtained by emailing [information.standards@nhs.net](mailto:information.standards@nhs.net) with "NHS Data Model and Dictionary - Archive Request" in the email subject line.**

---

BRIEF INTERVENTION (RETIRED), renamed from BRIEF INTERVENTION

---

Change to Supporting Information: Changed status to Retired, Name, Description

- Retired Brief Intervention
  - Changed Name from `Data_Dictionary.NHS_Business_Definitions.B.Brief_Intervention` to `Retired.Data_Dictionary.NHS_Business_Definitions.B.Brief_Intervention`
  - Changed Description
- 

CARDIOVASCULAR DISEASE RISK CALCULATOR (RETIRED), renamed from CARDIOVASCULAR DISEASE RISK CALCULATOR

---

Change to Supporting Information: Changed status to Retired, Name, Description

The [Cardiovascular Disease Risk Calculator](#) is an [ASSESSMENT TOOL](#). **This item has been retired from the NHS Data Model and Dictionary.**

The [Cardiovascular Disease Risk Calculator](#) is used to calculate the [PATIENT](#)'s risk of developing cardiovascular disease. **The last live version of this item is available in the March 2019 release of the NHS Data Model and Dictionary.**

The [CARDIOVASCULAR DISEASE RISK SCORE](#) from the [Cardiovascular Disease Risk Calculator](#) is calculated using a number of factors including: **Access to this version can be obtained by emailing [information.standards@nhs.net](mailto:information.standards@nhs.net) with "NHS Data Model and Dictionary - Archive Request" in the email subject line.**

- Age
- [ETHNIC CATEGORY](#)
- [SMOKING STATUS](#)
- [Blood Pressure](#)
- [Body Mass Index](#)

The [CARDIOVASCULAR DISEASE RISK SCORE](#) is expressed as a percentage to two decimal places.

For further information on the [Cardiovascular Disease Risk Calculator](#), see the [ClinRisk Website](#).

---

CARDIOVASCULAR DISEASE RISK CALCULATOR (RETIRED), renamed from CARDIOVASCULAR DISEASE RISK CALCULATOR

---

Change to Supporting Information: Changed status to Retired, Name, Description

- Retired Cardiovascular Disease Risk Calculator
  - Changed Name from `Data_Dictionary.NHS_Business_Definitions.C.Cardiovascular_Disease_Risk_Calculator` to `Retired.Data_Dictionary.NHS_Business_Definitions.C.Cardiovascular_Disease_Risk_Calculator`
  - Changed Description
- 

CLINICAL DATA SETS MENU

---

Change to Supporting Information: Changed Description

- [Message Documentation](#)
- [Cancer Outcomes and Services](#)
- [Chlamydia Testing Activity](#)
- [Community Services](#)
- [Diagnostic Imaging](#)
- [Female Genital Mutilation](#)
- [GUMCAD Sexually Transmitted Infection Surveillance System](#)
- [HIV and AIDS Reporting](#)
- [Improving Access to Psychological Therapies](#)
- [Maternity Services](#)
- [Mental Health Services](#)

- [National Cancer Waiting Times Monitoring](#)
- [National Neonatal](#)
- [National Renal](#)
- [NHS Health Checks](#)
- [Radiotherapy](#)
- [Sexual and Reproductive Health Activity](#)
- [Systemic Anti-Cancer Therapy](#)

---

#### CLINICAL DATA SETS MESSAGE DOCUMENTATION

---

Change to Supporting Information: Changed Description

**XML Schema Download:**

- [XML Schema TRUD Download](#)

**XML Schema Constraints:**

- [Cancer Outcomes and Services Data Set XML Schema Constraints](#)
- [Diagnostic Imaging Data Set XML Schema Constraints](#)
- [HIV and AIDS Reporting Data Set XML Schema Constraints](#)
- [NHS Health Checks Data Set XML Schema Constraints](#)
- [Systemic Anti-Cancer Therapy Data Set XML Schema Constraints](#)

**Data Set Constraints:**

- [Maternity Services Data Set Constraints](#)
- [Mental Health Services Data Set Constraints](#)

---

#### CLINICAL DATA SETS MESSAGE DOCUMENTATION MENU

---

Change to Supporting Information: Changed Description

[Clinical Data Sets Menu](#)

**XML Schema Download:**

- [XML Schema TRUD Download](#)

**XML Schema Constraints:**

- [Cancer Outcomes and Services](#)
- [Diagnostic Imaging](#)
- [HIV and AIDS](#)
- [NHS Health Checks](#)
- [Systemic Anti-Cancer Therapy](#)

**Data Set Constraints:**

- [Maternity Services](#)
- [Mental Health Services](#)

---

#### NHS HEALTH CHECK ASSESSMENT (RETIRED), renamed from NHS HEALTH CHECK ASSESSMENT

---

Change to Supporting Information: Changed status to Retired, Name, Description

An [NHS Health Check Assessment](#) is a [CARE CONTACT](#). **This item has been retired from the NHS Data Model and Dictionary.**

The assessment may include a number of tests and measurements covering height, weight, family history, [SMOKING STATUS](#), [Blood Pressure](#), cholesterol and glucose levels. Each [PATIENT](#)'s risk of heart attack, stroke or developing diabetes or kidney disease will be determined. **The last live version of this item is available in the March 2019 release of the NHS Data Model and Dictionary.**

The results of tests performed at the [NHS Health Check Assessment](#) will determine the individually tailored advice given to the [PATIENT](#) on how to manage or lower those risks. It may result in a [Signposting](#) or referral to [SERVICES](#) such as [Stop Smoking Services](#) and Weight Management Programmes. The [CARE PROFESSIONAL](#) undertaking the [NHS Health Check Assessment](#) may also decide that further assessments for conditions such as diabetes or hypertension are necessary. **Access to this version can be obtained by emailing [information.standards@nhs.net](mailto:information.standards@nhs.net) with "NHS Data Model and Dictionary - Archive Request" in the email subject line.**

An [NHS Health Check Assessment](#) may be carried out in a variety of venues and settings, including pharmacies, community centres and outreach clinics as well as [General Medical Practitioner Practices](#).

---

#### NHS HEALTH CHECK ASSESSMENT (RETIRED), renamed from NHS HEALTH CHECK ASSESSMENT

---

Change to Supporting Information: Changed status to Retired, Name, Description

- Retired NHS Health Check Assessment
- Changed Name from Data\_Dictionary.NHS\_Business\_Definitions.N.NHS\_Health\_Check\_Assessment to Retired.Data\_Dictionary.NHS\_Business\_Definitions.N.NHS\_Health\_Check\_Assessment

- Changed Description

---

**NHS HEALTH CHECK PROGRAMME (RETIRED)**, renamed from NHS HEALTH CHECK PROGRAMME

---

Change to Supporting Information: Changed status to Retired, Name, Description

An [NHS Health Check Programme](#) is a type of [Surveillance Programme](#). **This item has been retired from the NHS Data Model and Dictionary.**

An [NHS Health Check Programme](#) identifies eligible participants between the ages of 40 and 74 in England that have not been diagnosed previously with diabetes, hypertension, chronic heart disease or kidney disease. It provides an assessment of their risk of developing these conditions in order to support, reduce or manage that risk through individually tailored advice. **The last live version of this item is available in the March 2019 release of the NHS Data Model and Dictionary.**

It identifies people requiring an [NHS Health Check Assessment](#) to ensure those who are deemed at risk of developing conditions are provided with appropriate information, advice and treatment, in order to improve the management of their health and quality of life. **Access to this version can be obtained by emailing [information.standards@nhs.net](mailto:information.standards@nhs.net) with "NHS Data Model and Dictionary - Archive Request" in the email subject line.**

---

**NHS HEALTH CHECK PROGRAMME (RETIRED)**, renamed from NHS HEALTH CHECK PROGRAMME

---

Change to Supporting Information: Changed status to Retired, Name, Description

- Retired NHS Health Check Programme
- Changed Name from Data\_Dictionary.NHS\_Business\_Definitions.N.NHS\_Health\_Check\_Programme to Retired.Data\_Dictionary.NHS\_Business\_Definitions.N.NHS\_Health\_Check\_Programme
- Changed Description

---

**SIGNPOSTING (RETIRED)**, renamed from SIGNPOSTING

---

Change to Supporting Information: Changed status to Retired, Name, Description

[Signposting](#) is the process of directing a [PERSON](#) to a suitable local [SERVICE](#). **This item has been retired from the NHS Data Model and Dictionary.**

**The last live version of this item is available in the March 2019 release of the NHS Data Model and Dictionary.**

**Access to this version can be obtained by emailing [information.standards@nhs.net](mailto:information.standards@nhs.net) with "NHS Data Model and Dictionary - Archive Request" in the email subject line.**

---

**SIGNPOSTING (RETIRED)**, renamed from SIGNPOSTING

---

Change to Supporting Information: Changed status to Retired, Name, Description

- Retired Signposting
- Changed Name from Data\_Dictionary.NHS\_Business\_Definitions.S.Signposting to Retired.Data\_Dictionary.NHS\_Business\_Definitions.S.Signposting
- Changed Description

---

**SURVEILLANCE PROGRAMME (RETIRED)**, renamed from SURVEILLANCE PROGRAMME

---

Change to Supporting Information: Changed status to Retired, Name, Description

[Surveillance Programme](#) is a [HEALTH PROGRAMME](#). **This item has been retired from the NHS Data Model and Dictionary.**

A programme delivered to individuals and directed towards the identification of a range of possible disorders or health problems which can be treated, or their adverse consequences reduced, more effectively by earlier, rather than later, intervention. The broad objective is the general oversight of health or monitoring of development which involves assessment of a selected group of the population by means of practical and uniform observations and measurements which can be applied rapidly. **The last live version of this item is available in the March 2019 release of the NHS Data Model and Dictionary.**

**Access to this version can be obtained by emailing [information.standards@nhs.net](mailto:information.standards@nhs.net) with "NHS Data Model and Dictionary - Archive Request" in the email subject line.**

---

**SURVEILLANCE PROGRAMME (RETIRED)**, renamed from SURVEILLANCE PROGRAMME

---

Change to Supporting Information: Changed status to Retired, Name, Description

- Retired Surveillance Programme
- Changed Name from Data\_Dictionary.NHS\_Business\_Definitions.S.Surveillance\_Programme to Retired.Data\_Dictionary.NHS\_Business\_Definitions.S.Surveillance\_Programme
- Changed Description

---

**SURVEILLANCE PROGRAMME STAGE (RETIRED)**, renamed from SURVEILLANCE PROGRAMME STAGE

---



Change to Supporting Information: Changed status to Retired, Name, Description

[Surveillance Programme Stage](#) is a stage in a [Surveillance Programme](#). **This item has been retired from the NHS Data Model and Dictionary.**

Each [Surveillance Programme Stage](#) occurs at a predetermined interval at which observations or measurements are made. A stage may involve more than one contact with the individual being monitored. **The last live version of this item is available in the March 2019 release of the NHS Data Model and Dictionary.**

**Access to this version can be obtained by emailing [information.standards@nhs.net](mailto:information.standards@nhs.net) with "NHS Data Model and Dictionary - Archive Request" in the email subject line.**

---

#### SURVEILLANCE PROGRAMME STAGE (RETIRED), renamed from SURVEILLANCE PROGRAMME STAGE

---

Change to Supporting Information: Changed status to Retired, Name, Description

- Retired Surveillance Programme Stage
- Changed Name from `Data_Dictionary.NHS_Business_Definitions.S.Surveillance_Programme_Stage` to `Retired.Data_Dictionary.NHS_Business_Definitions.S.Surveillance_Programme_Stage`
- Changed Description

---

#### XML SCHEMA TRUD DOWNLOAD

---

Change to Supporting Information: Changed Description

#### Background:

XML Schemas and Release Notes can be downloaded from [Technology Reference Data Update Distribution \(TRUD\)](#).

In order to access the XML Schemas and Release Notes on [Technology Reference Data Update Distribution \(TRUD\)](#), users will be required to:

- Create a [TRUD](#) account at: [TRUD: Account Creation](#) (if an account does not currently exist. This only has to be done once to access any XML Schema)
- Log into [TRUD](#) at: [TRUD: Log in](#)
- Access [NHS Data Model and Dictionary: DD XML Schemas](#) and subscribe to the XML Schema to be downloaded
- Accept the licence and request the subscription (an email will be sent immediately to confirm that the request has been accepted and the files can be downloaded, which avoids any delays)
- Once the "Subscription accepted" email has been received, download the zip file from [NHS Data Model and Dictionary: DD XML Schemas](#).

Once an XML Schema has been added to [TRUD](#), users who have subscribed to that item will be automatically notified by email of any updates to that area, for example, new versions, retirements etc.

#### XML Schema Download:

XML Schemas and Release Notes for the following Data Sets in the NHS Data Model and Dictionary can be downloaded from [Technology Reference Data Update Distribution \(TRUD\)](#) at: [NHS Data Model and Dictionary: DD XML Schemas](#).

- [Cancer Outcomes and Services Data Set \(COSDS\)](#)
- [Community Services Data Set \(CSDS\)](#)
- [Commissioning Data Set \(CDS\) V6-2](#)
- [Commissioning Data Set \(CDS\) V6-2-1](#)
- [Commissioning Data Set \(CDS\) V6-2-2](#)
- [CDS V6-2-2 Type 011 - Emergency Care Commissioning Data Set](#)
- [Diagnostic Imaging Data Set \(DIDS\)](#)
- [HIV and AIDS Reporting Data Set \(HARS\)](#)
- [Information Sharing to Tackle Violence Minimum Data Set \(ISTVDS\)](#)
- [Maternity Services Data Set \(MSDS\)](#)
- [National Cancer Waiting Times Monitoring Data Set \(NCWTMS\)](#)
- [NHS Health Checks Data Set \(NHSHC\)](#)
- [Systemic Anti-Cancer Therapy Data Set \(SACT\)](#)

For supplementary information on the XML Schema Publication and Download, see the [NHS Data Model and Dictionary Service](#) part of the [NHS Digital](#) website at: [Policies: XML Schema Publication and Download guidance](#).

---

#### ACTIVITY GROUP

---

Change to Class: Changed Attributes

*Attributes of this Class are:*

- A and E PATIENT GROUP
- ACTIVITY GROUP TYPE
- ADMISSION METHOD
- CANCER OR SYMPTOMATIC BREAST REFERRAL PATIENT STATUS
- CANCER TRANSFER REASON FOR INTER PROVIDER TRANSFER
- CANCER TREATMENT INTENT
- CARER RESIDENT INDICATION CODE FOR NATIONAL NEONATAL DATA SET

CHILDREN TEENAGERS AND YOUNG ADULTS AGE CATEGORY  
COMMUNITY TREATMENT ORDER END REASON  
CONTINUITY OF CARER PATHWAY INDICATOR  
DAUGHTER BORN AT THIS ENCOUNTER INDICATOR  
~~DECISION TO UNDERTAKE FURTHER ASSESSMENT INDICATOR~~  
DELIVERY PLACE CHANGE REASON  
DISCHARGE DESTINATION  
DISCHARGED TO HOSPITAL AT HOME SERVICE INDICATOR  
DISCHARGE METHOD  
DISCHARGE REASON FOR MOTHER MATERNITY SERVICES  
ESTIMATED DATE OF DELIVERY  
FIRST REGULAR DAY OR NIGHT ADMISSION  
HOLISTIC NEEDS ASSESSMENT POINT OF PATHWAY FOR CANCER  
IMPROVING ACCESS TO PSYCHOLOGICAL THERAPIES CARE SPELL END CODE  
IMPROVING ACCESS TO PSYCHOLOGICAL THERAPIES OPT IN DATE  
IMPROVING ACCESS TO PSYCHOLOGICAL THERAPIES STEPPED CARE INTENSITY DELIVERED  
LENGTH OF STAY ADJUSTMENT  
LENGTH OF STAY ADJUSTMENT REASON  
MATERNAL CRITICAL INCIDENT INDICATOR  
MENTAL HEALTH ABSOLUTE DISCHARGE RESPONSIBILITY  
MENTAL HEALTH CONDITIONAL DISCHARGE END REASON  
MENTAL HEALTH DELAYED DISCHARGE ATTRIBUTABLE TO INDICATION CODE  
MENTAL HEALTH DELAYED DISCHARGE REASON  
MONITORING INTENT  
NEONATAL LEVEL OF CARE  
NHS CONTINUING HEALTHCARE COMMISSIONED SERVICES INDICATOR  
NHS CONTINUING HEALTHCARE REFERRAL EXCEEDING 28 DAYS TIME BAND CATEGORY  
NHS CONTINUING HEALTHCARE TYPE  
NON SMOKING CONFIRMATION STATUS AT 4 WEEKS  
OPERATION FUNDING FOR NATIONAL JOINT REGISTRY  
OUTCOME AT 4 WEEK FOLLOW UP FOR STOP SMOKING  
PALLIATIVE CARE SPECIALIST SEEN INDICATOR  
PALLIATIVE TREATMENT REASON CODE FOR UPPER GASTROINTESTINAL  
PATIENT ATTENDANCE SYMPTOMATIC INDICATOR FOR SEXUAL HEALTH SERVICE  
PATIENT CLASSIFICATION  
PATIENT RECEIVING ONE TO ONE NURSING CARE INDICATOR  
PHARMACOTHERAPY STOP SMOKING AID RECEIVED  
PLANNED DELIVERY SETTING CHANGE REASON  
PREGNANCY OUTCOME  
PREGNANCY OUTCOME CODE  
PSYCHIATRIC PATIENT STATUS  
SOURCE OF ADMISSION

---

**APPOINTMENT**

---

Change to Class: Changed Attributes

*Attributes of this Class are:*

K APPOINTMENT DATE  
K APPOINTMENT IDENTIFIER  
K APPOINTMENT TIME  
APPOINTMENT CANCELLED DATE  
APPOINTMENT FIRST ATTENDANCE  
APPOINTMENT GROUP IDENTIFIER  
APPOINTMENT TYPE  
APPOINTMENT TYPE FOR IMPROVING ACCESS TO PSYCHOLOGICAL THERAPIES  
ATTENDED OR DID NOT ATTEND  
DID NOT ATTEND REASON  
~~INVITATION OFFER SENT INDICATOR~~  
UNIQUE BOOKING REFERENCE NUMBER CONVERTED

---

**CARE CONTACT**

---

Change to Class: Changed Attributes

*Attributes of this Class are:*

A and E ATTENDANCE CATEGORY  
A and E INITIAL ASSESSMENT TRIAGE CATEGORY

A and E STREAM  
ACCIDENT AND EMERGENCY ARRIVAL MODE  
ACCIDENT AND EMERGENCY ATTENDANCE DISPOSAL  
~~BRIEF INTERVENTION PROVIDED INDICATOR~~  
~~BRIEF INTERVENTION TYPE FOR NHS HEALTH CHECK~~  
CARE CONTACT CANCELLATION REASON  
CARE CONTACT SUBJECT  
CARE CONTACT TYPE  
CARE PROGRAMME APPROACH REVIEW ABUSE QUESTION ASKED INDICATOR  
CHILD DIFFICULT TO TEST REASON  
CLINICAL NURSE SPECIALIST INDICATION CODE  
CLINIC ATTENDANCE PURPOSE CODE FOR HIV  
CONSULTATION TYPE  
DIETARY ADVICE REASON CODE  
EMERGENCY CARE ATTENDANCE CATEGORY  
FACE TO FACE COMMUNICATION MODE  
FIRST ATTENDANCE  
GROUP THERAPY INDICATOR  
INFORMATION AND ADVICE PROVIDED INDICATOR  
INFORMATION AND ADVICE TYPE PROVIDED FOR FEMALE GENITAL MUTILATION  
~~INFORMATION AND ADVICE TYPE PROVIDED FOR NHS HEALTH CHECK~~  
INITIAL CONTACT INDICATOR  
INITIAL DIAGNOSIS CARE SETTING OR SERVICE FOR HIV  
LATE ANTENATAL BOOKING APPOINTMENT REASON  
MEDICAL STAFF TYPE SEEING PATIENT  
MENTAL HEALTH PREDICTION AND DETECTION INDICATOR  
MULTIPROFESSIONAL OR MULTIDISCIPLINARY INDICATION CODE  
NEW HIV DIAGNOSIS IN UNITED KINGDOM INDICATOR  
OTHER PERSON IN ATTENDANCE AT CARE CONTACT  
OUTCOME OF ATTENDANCE  
PATIENT HIV CARE STATUS  
POST EXPOSURE PROPHYLAXIS INDICATOR  
PRE EXPOSURE PROPHYLAXIS INDICATOR  
PSYCHIATRIC CARE INDICATOR FOR HIV  
~~SIGNPOSTING TO SERVICE INDICATOR~~  
~~SIGNPOSTING TO SERVICE TYPE FOR NHS HEALTH CHECK~~  
SKIN TO SKIN CONTACT INDICATOR  
TWO YEAR NEONATAL OUTCOMES ASSESSMENT NOT CARRIED OUT REASON

---

HEALTH PROGRAMME POPULATION (RETIRED) renamed from HEALTH PROGRAMME POPULATION

Change to Class: Changed Relationships, Attributes, status to Retired, Name, Description

The population targeted for a given [HEALTH PROGRAMME](#). This item has been retired from the NHS Data Model and Dictionary.

**The last live version of this item is available in the March 2019 release of the NHS Data Model and Dictionary.**

**Access to this version can be obtained by emailing [information.standards@nhs.net](mailto:information.standards@nhs.net) with "NHS Data Model and Dictionary - Archive Request" in the email subject line.**

---

HEALTH PROGRAMME POPULATION (RETIRED) renamed from HEALTH PROGRAMME POPULATION

Change to Class: Changed Relationships, Attributes, status to Retired, Name, Description

*Attributes of this Class are:*

TARGET POPULATION

*This class has no attributes.*

---

HEALTH PROGRAMME POPULATION (RETIRED) renamed from HEALTH PROGRAMME POPULATION

Change to Class: Changed Relationships, Attributes, status to Retired, Name, Description

~~Each HEALTH PROGRAMME POPULATION~~

~~K must be the target of one and only one HEALTH PROGRAMME~~

---

HEALTH PROGRAMME POPULATION (RETIRED) renamed from HEALTH PROGRAMME POPULATION

Change to Class: Changed Relationships, Attributes, status to Retired, Name, Description

- Changed Relationships
- Changed Attributes
- Retired HEALTH PROGRAMME POPULATION
- Changed Name from Data\_Dictionary.Classes.H.HEALTH\_PROGRAMME\_POPULATION to Retired.Data\_Dictionary.Classes.H.HEALTH\_PROGRAMME\_POPULATION
- Changed Description

#### PATIENT DIAGNOSIS

Change to Class: Changed Attributes

*Attributes of this Class are:*

ACCIDENT AND EMERGENCY DIAGNOSIS  
BASIS OF DIAGNOSIS FOR CANCER  
BREAST CANCER INVASIVE STATUS  
CEREBRAL PALSY TYPE CODE FOR NATIONAL NEONATAL DATA SET  
CYTOMEGALOVIRUS DISEASE CODE  
DIABETES TYPE FOR RENAL CARE  
DIAGNOSIS SCHEME IN USE  
FEMALE GENITAL MUTILATION TYPE 4 CODE  
HISTOLOGY CONFIRMED NECROTISING ENTEROCOLITIS FOLLOWING LAPAROTOMY INDICATOR  
HISTORY OF FEMALE GENITAL MUTILATION INDICATOR  
HYPOXIC ISCHEMIC ENCEPHALOTHAPY GRADE  
LIFE THREATENING SYMPTOMS AT DIAGNOSIS INDICATOR  
LIVER CIRRHOSIS CAUSE TYPE  
LIVER CIRRHOSIS TYPE  
LONG HEAD BICEPS PRESENT INDICATOR FOR SHOULDER REPLACEMENT  
LONG TERM PHYSICAL HEALTH CONDITION INDICATOR FOR IMPROVING ACCESS TO PSYCHOLOGICAL THERAPIES  
MATERNITY COMPLICATING DIAGNOSIS INDICATOR  
MATERNITY COMPLICATING MEDICAL DIAGNOSIS  
MATERNITY MEDICAL DIAGNOSIS TYPE  
NEONATAL ABSTINENCE SYNDROME OBSERVED INDICATOR  
OBSTETRIC DIAGNOSIS  
OTHER MYELODYSPLASIA SYMPTOMS AT DIAGNOSIS  
PATIENT DIAGNOSIS CODING SIGNIFICANCE  
PATIENT DIAGNOSIS CONFIRMED INDICATION CODE FOR SEXUAL HEALTH SERVICE  
PATIENT DIAGNOSIS INDICATION FOR PRIMARY ANKLE REPLACEMENT  
PATIENT DIAGNOSIS INDICATION FOR PRIMARY ELBOW REPLACEMENT  
PATIENT DIAGNOSIS INDICATION FOR PRIMARY HIP REPLACEMENT  
PATIENT DIAGNOSIS INDICATION FOR PRIMARY KNEE REPLACEMENT  
PATIENT DIAGNOSIS INDICATION FOR PRIMARY SHOULDER REPLACEMENT  
PATIENT DIAGNOSIS INDICATOR  
PATIENT DIAGNOSIS SITE OF INFECTION FOR SEXUAL HEALTH SERVICE  
~~PATIENT DIAGNOSIS TYPE FOR NHS HEALTH CHECK~~  
POST HAEMORRHAGIC HYDROCEPHALUS OBSERVED DURING CRANIAL ULTRASOUND SCAN INDICATOR  
PRESENT ON ADMISSION INDICATOR  
PRIMARY CANCER SITE FOR CANCER FASTER DIAGNOSIS PATHWAY  
PRIMARY DIAGNOSIS  
PROVISIONAL DIAGNOSIS  
RENAL DONOR DIAGNOSIS TYPE  
RENAL LIVING DONOR DIAGNOSIS TYPE  
RENAL PAEDIATRIC DIAGNOSIS TYPE  
RENAL RECIPIENT CARDIOVASCULAR COMPLICATION TYPE  
RENAL RECIPIENT DIAGNOSIS TYPE  
SEIZURE OCCURRED INDICATOR  
SEPSIS SUSPECTED INDICATOR  
TUMOUR OR LESION LATERALITY

#### PERSON PHYSICAL ACTIVITY LEVEL

Change to Class: Changed Attributes

*Attributes of this Class are:*

~~PHYSICAL ACTIVITY LEVEL~~

*This class has no attributes.*

#### PLANNED ACTIVITY

Change to Class: Changed Attributes

Attributes of this Class are:

K PLANNED ACTIVITY IDENTIFIER  
DECISION TO TREAT DATE  
FIRST DEFINITIVE TREATMENT PLANNED  
~~FURTHER ASSESSMENT TYPE FOR NHS HEALTH CHECK~~  
INTENDED PROCEDURE STATUS  
PLANNED CANCER TREATMENT TYPE

---

#### PRESCRIPTION

---

Change to Class: Changed Attributes

Attributes of this Class are:

PRESCRIPTION DATE  
PRESCRIPTION IDENTIFIER  
~~PRESCRIPTION PROVIDED INDICATOR~~  
PRESCRIPTION TIME  
~~PRESCRIPTION TYPE PROVIDED FOR NHS HEALTH CHECK~~

---

#### REFERRAL REQUEST

---

Change to Class: Changed Attributes

Attributes of this Class are:

BENIGN THERAPEUTIC OPERATION INDICATOR  
COMMISSIONER REFERENCE NUMBER  
REASON FOR REFERRAL TO COMMUNITY CARE  
REASON FOR REFERRAL TO MENTAL HEALTH  
REFERRAL CLOSURE REASON  
REFERRAL REJECTION REASON  
~~REFERRAL REQUEST ACCEPTANCE INDICATOR~~  
REFERRAL REQUEST RECEIVED DATE  
REFERRAL REQUEST RECEIVED TIME  
~~REFERRAL REQUEST SERVICE TYPE FOR NHS HEALTH CHECK~~  
SCREENING REFERRAL SOURCE  
SERVICE TYPE REQUESTED  
SOURCE OF REFERRAL FOR A and E  
SOURCE OF REFERRAL FOR COMMUNITY  
SOURCE OF REFERRAL FOR FEMALE GENITAL MUTILATION  
SOURCE OF REFERRAL FOR MATERNITY  
SOURCE OF REFERRAL FOR MENTAL HEALTH  
SOURCE OF REFERRAL FOR OUT-PATIENTS  
TWO WEEK WAIT CANCER OR SYMPTOMATIC BREAST REFERRAL TYPE

---

#### ASSESSMENT TOOL TYPE

---

Change to Attribute: Changed Description

The type of [ASSESSMENT TOOL](#).

National Codes:

001 [Health of the Nation Outcome Scale \(Working Age Adults\)](#)  
002 Health of the Nation Outcome Scale (Children and Adolescents) (Retired 01 January 2016)  
003 [Patient Health Questionnaire-9](#)  
004 [Agoraphobia Questionnaire](#)  
005 [Agoraphobia Mobility Inventory Questionnaire 'When Accompanied'](#)  
006 [Agoraphobia Mobility Inventory Questionnaire 'When Alone'](#)  
007 [Employment Status Questionnaire](#)  
008 [Generalised Anxiety Disorder Penn State Worry Questionnaire](#)  
009 [Generalised Anxiety Disorder Questionnaire](#)  
010 [Health Anxiety Inventory Short Week Scale](#)  
011 [Obsessive Compulsive Disorder Inventory Questionnaire](#)  
012 [Panic Disorder Severity Scale](#)  
013 [Post Traumatic Stress Disorder Impacts of Events Revised Scale](#)  
014 [Social Phobia Inventory Questionnaire](#)  
015 [Social Phobia Questionnaire](#)  
016 [Specific Phobia Questionnaire](#)  
017 [Work and Social Adjustment Scale](#)  
018 Health of the Nation Outcome Scale 65+ (Older Adults) (Retired 01 January 2016)

019	Health of the Nation Outcome Scale (Secure) (Retired 01 January 2016)
020	<a href="#">Adult Mental Health Clustering Tool</a>
024	<a href="#">Cardiovascular Disease Risk Calculator</a>
021	<a href="#">Cardiovascular Disease Risk Calculator (Retired April 2019)</a>
022	Strengths And Difficulties Questionnaire (Retired 01 January 2016)
023	Experience of Service Questionnaire (Retired 01 January 2016)
024	Children's Global Assessment Scale (Retired April 2018)
025	Family Assessment Device (General Functioning Subscale) (Retired April 2018)
026	Parenting Daily Hassles (Retired April 2018)
027	Parent-Infant Relationship Global Assessment Scale (Retired 01 January 2016)
028	Paddington Complexity Scale (Retired April 2018)
029	Goal Based Outcomes (Retired 01 January 2016)
030	Mood And Feelings Questionnaire (Retired April 2018)
031	Parenting Stress Index (Retired April 2018)
032	<a href="#">Adult Comorbidity Evaluation - 27</a>
033	<a href="#">Child-Pugh Score Calculator</a>
034	<a href="#">Dysphagia Scoring System</a>
035	Follicular Lymphoma International Prognostic Index (Retired 01 April 2018)
036	<a href="#">Hasenclever Index</a>
037	Hasford Index (Retired 01 April 2017)
038	<a href="#">International Prognostic Scoring System</a>
039	<a href="#">Nottingham Prognostic Index</a>
040	<a href="#">Revised International Prognostic Index</a>
041	<a href="#">Sokal Index</a>
042	<a href="#">Oxford Orthopaedic Questionnaire</a>
043	<a href="#">Oxford Orthopaedic Questionnaire (Shoulder)</a>
044	<a href="#">Venous Thromboembolism Risk Assessment Tool</a>
045	<a href="#">TPRG-SEND Two Year Corrected Age Outcome Assessment</a>
046	<a href="#">Bayley Scales of Infant and Toddler Development (Third Edition)</a>
047	<a href="#">Griffiths Mental Development Scales</a>
048	<a href="#">Schedule of Growing Skills</a>
049	<a href="#">Improving Access to Psychological Therapies Patient Experience Questionnaire</a>
050	Health of the Nation Outcome Scale for People with Learning Disabilities (Retired 01 January 2016)
051	Protected Characteristic Protocol (Disability) (Retired 01 January 2016)
052	<a href="#">Forensic Mental Health Clustering Tool</a>
053	<a href="#">Child and Adolescent Mental Health Needs Based Grouping Tool</a>
054	<a href="#">European Group for the Immunological Classification of Leukaemia Scoring System</a>
055	<a href="#">Follicular Lymphoma International Prognostic Index 2</a>
056	<a href="#">United Kingdom Model for End-Stage Liver Disease</a>
057	<a href="#">Decision Support Tool for NHS Continuing Healthcare</a>
058	<a href="#">Fast Track Pathway Tool for NHS Continuing Healthcare</a>

---

**BRIEF INTERVENTION PROVIDED INDICATOR (RETIRED), renamed from BRIEF INTERVENTION PROVIDED INDICATOR**

---

Change to Attribute: Changed status to Retired, Name, Description

An indication of whether a [Brief Intervention](#) was provided during a [CARE CONTACT](#). **This item has been retired from the NHS Data Model and Dictionary.**

**National Codes:** **The last live version of this item is available in the March 2019 release of the NHS Data Model and Dictionary.**

- Y [Brief Intervention](#) was provided
- N [Brief Intervention](#) was not provided

**Access to this version can be obtained by emailing [information.standards@nhs.net](mailto:information.standards@nhs.net) with "NHS Data Model and Dictionary - Archive Request" in the email subject line.**

---

**BRIEF INTERVENTION PROVIDED INDICATOR (RETIRED), renamed from BRIEF INTERVENTION PROVIDED INDICATOR**

---

Change to Attribute: Changed status to Retired, Name, Description

- Retired BRIEF INTERVENTION PROVIDED INDICATOR
- Changed Name from Data.Dictionary.Attributes.B.Brief Intervention Provided Indicator to Retired.Data.Dictionary.Attributes.B.Brief Intervention Provided Indicator
- Changed Description

---

**BRIEF INTERVENTION TYPE FOR NHS HEALTH CHECK (RETIRED), renamed from BRIEF INTERVENTION TYPE FOR NHS HEALTH CHECK**

---

Change to Attribute: Changed status to Retired, Name, Description

The type of [Brief Intervention](#) given to a [PATIENT](#) at an [NHS Health Check Assessment](#). This item has been retired from the NHS Data Model and Dictionary.

**National Codes:** The last live version of this item is available in the March 2019 release of the NHS Data Model and Dictionary.

04 Physical Activity Brief

Access to this version can be obtained by emailing [information.standards@nhs.net](mailto:information.standards@nhs.net) with "NHS Data Model and Dictionary - Archive Request" in the email subject line.

---

#### BRIEF INTERVENTION TYPE FOR NHS HEALTH CHECK (RETIRED), renamed from BRIEF INTERVENTION TYPE FOR NHS HEALTH CHECK

---

Change to Attribute: Changed status to Retired, Name, Description

- Retired BRIEF INTERVENTION TYPE FOR NHS HEALTH CHECK
- Changed Name from Data\_Dictionary.Attributes.B.Bri.BRIEF\_INTERVENTION\_TYPE\_FOR\_NHS\_HEALTH\_CHECK to Retired.Data\_Dictionary.Attributes.B.BRIEF\_INTERVENTION\_TYPE\_FOR\_NHS\_HEALTH\_CHECK
- Changed Description

---

#### CARE CONTACT TYPE

---

Change to Attribute: Changed Description

The type of [CARE CONTACT](#).

**National Codes:**

- 01 [Accident and Emergency Attendance](#)
- 02 Acute Home-Based Contact (Retired 01 January 2016)
- 03 Audiology Attendance (Retired 01 April 2014)
- 04 [Cancer Clinical Status Assessment](#)
- 05 [Care Programme Approach Review](#)
- 06 [Clinic Attendance Consultant](#)
- 07 Clinic Attendance Sexual and Reproductive Health Service (Retired November 2014)
- 08 [Clinic Attendance Midwife](#)
- 09 [Clinic Attendance Non-Consultant](#)
- 10 [Clinic Attendance Nurse](#)
- 11 Contact Tracing Activity (Retired 01 April 2014)
- 12 Dental Treatment Contact (Retired 01 April 2014)
- 13 Day Care Attendance (Retired 01 January 2016)
- 14 [Domiciliary Consultation](#)
- 15 Emergency Dental Attendance (Retired 01 April 2014)
- 16 Face To Face Contact Community Care (Retired 01 January 2016)
- 17 Face To Face Contact CPA Care Coordinator (Retired 01 January 2016)
- 18 Face To Face Contact Dental (Retired 01 April 2014)
- 19 Face To Face Contact Optical (Retired 01 April 2014)
- 20 Face To Face Contact Social Worker (Retired 01 April 2011)
- 21 Face To Face Contact Surveillance (Retired 01 April 2014)
- 22 [Sexual and Reproductive Health Domiciliary Visit](#)
- 23 [Genitourinary Consultant Clinic Attendance](#)
- 24 GMP Consultation (Retired 01 April 2014)
- 25 GMP Practice Consultation (Retired 01 April 2014)
- 26 Home Assessment Visit (Retired 01 January 2016)
- 27 [Maternity Domiciliary Visit](#)
- 28 Night Consultation Visit (Retired 01 April 2014)
- 29 [Nurse or Midwife Contact](#)
- 30 [Out-Patient Attendance Consultant](#)
- 31 Registration Health Check (Retired 01 April 2014)
- 32 Sheltered Work Attendance (Retired 01 April 2011)
- 33 Sight Test (Retired 01 April 2014)
- 34 Social Services Statutory Assessment (Retired 01 January 2016)
- 35 Professional Advice And Support Contact (Retired 01 April 2014)
- 36 Professional Staff Group Contact (Retired 01 January 2016)
- 37 Telephone Contact NHS Direct (Mental Health) (Retired 01 April 2011)
- 38 [Theatre Case](#)
- 39 [Ward Attendance](#)
- 40 Genitourinary Care Contact (Retired January 2014)
- 41 [Improving Access to Psychological Therapies Contact](#)
- 42 [NHS Health Check Assessment](#)
- 42 [NHS Health Check Assessment \(Retired April 2019\)](#)
- 43 Antenatal Booking Appointment (Retired 1 April 2019)
- 44 [Pregnancy First Contact](#)

- 45 [Nutritional Assessment](#)
- 46 [HIV Clinic Attendance](#)
- 47 [Multi-Disciplinary Consultation \(National Tariff Payment System\)](#)
- 48 [Multi-Professional Consultation \(National Tariff Payment System\)](#)
- 49 [Two Year Neonatal Outcomes Assessment](#)
- 50 [Radiotherapy Attendance](#)
- 51 [Holistic Needs Assessment](#)
- 52 [Emergency Care Attendance](#)

Note: The list is not in alphabetical order.

**DECISION TO UNDERTAKE FURTHER ASSESSMENT INDICATOR (RETIRED)**, renamed from **DECISION TO UNDERTAKE FURTHER ASSESSMENT INDICATOR**

Change to Attribute: Changed status to Retired, Name, Description

An indication of whether the [CARE PROFESSIONAL](#) has decided that a [PATIENT](#) requires further assessment to be carried out following a [CARE CONTACT](#).

**National Codes:** This item has been retired from the NHS Data Model and Dictionary.

- Y Further assessment is required
- N No further assessment is required

**The last live version of this item is available in the March 2019 release of the NHS Data Model and Dictionary.**

**Access to this version can be obtained by emailing [information.standards@nhs.net](mailto:information.standards@nhs.net) with "NHS Data Model and Dictionary - Archive Request" in the email subject line.**

**DECISION TO UNDERTAKE FURTHER ASSESSMENT INDICATOR (RETIRED)**, renamed from **DECISION TO UNDERTAKE FURTHER ASSESSMENT INDICATOR**

Change to Attribute: Changed status to Retired, Name, Description

- Retired DECISION TO UNDERTAKE FURTHER ASSESSMENT INDICATOR
- Changed Name from Data\_Dictionary.Attributes.D.Dec.DECISION\_TO\_UNDERTAKE\_FURTHER\_ASSESSMENT\_INDICATOR to Retired.Data\_Dictionary.Attributes.D.DECISION\_TO\_UNDERTAKE\_FURTHER\_ASSESSMENT\_INDICATOR
- Changed Description

**FURTHER ASSESSMENT TYPE FOR NHS HEALTH CHECK (RETIRED)**, renamed from **FURTHER ASSESSMENT TYPE FOR NHS HEALTH CHECK**

Change to Attribute: Changed status to Retired, Name, Description

The type of further assessment which the [CARE PROFESSIONAL](#) has decided that a [PATIENT](#) requires following an [NHS Health Check Assessment](#).

**National Codes:** This item has been retired from the NHS Data Model and Dictionary.

- 01 Diabetes Assessment
- 02 Serum Creatinine Assessment
- 03 Hypertension Assessment
- 04 Fasting Cholesterol Assessment
- 05 Impaired Fasting Glycaemia Impaired Glucose Tolerance Lifestyle Management

**The last live version of this item is available in the March 2019 release of the NHS Data Model and Dictionary.**

**Access to this version can be obtained by emailing [information.standards@nhs.net](mailto:information.standards@nhs.net) with "NHS Data Model and Dictionary - Archive Request" in the email subject line.**

**FURTHER ASSESSMENT TYPE FOR NHS HEALTH CHECK (RETIRED)**, renamed from **FURTHER ASSESSMENT TYPE FOR NHS HEALTH CHECK**

Change to Attribute: Changed status to Retired, Name, Description

- Retired FURTHER ASSESSMENT TYPE FOR NHS HEALTH CHECK
- Changed Name from Data\_Dictionary.Attributes.F.Fr.FURTHER\_ASSESSMENT\_TYPE\_FOR\_NHS\_HEALTH\_CHECK to Retired.Data\_Dictionary.Attributes.F.FURTHER\_ASSESSMENT\_TYPE\_FOR\_NHS\_HEALTH\_CHECK
- Changed Description

**HEALTH PROGRAMME TYPE**

Change to Attribute: Changed Description

The type of [HEALTH PROGRAMME](#).

*National Codes:*



- 01 Contact Tracing Programme (Retired 01 April 2014)
- 02 [Health Promotion Programme](#)
- 03 Nursing In The Community Programme (Retired 01 January 2016)
- 04 Oral Health Programme (Retired 01 April 2014)
- 05 Professional Advice And Support Programme (Retired 01 April 2014)
- 06 [Screening Programme](#)
- 07 [Surveillance Programme](#)
- 07 [Surveillance Programme \(Retired April 2019\)](#)
- 08 [Immunisation Programme](#)
- 09 [NHS Breast Screening Programme](#)
- 10 [NHS Newborn and Infant Physical Examination Programme](#)

**INFORMATION AND ADVICE TYPE PROVIDED FOR NHS HEALTH CHECK (RETIRED)\_ renamed from INFORMATION AND ADVICE TYPE PROVIDED FOR NHS HEALTH CHECK**

Change to Attribute: Changed status to Retired, Name, Description

The type of information and advice given to a [PATIENT](#) at an [NHS Health Check Assessment](#). **This item has been retired from the NHS Data Model and Dictionary.**

**National Codes: The last live version of this item is available in the March 2019 release of the NHS Data Model and Dictionary.**

- 01 General Lifestyle Advice
- 02 Stop Smoking Advice
- 03 Weight Management Advice

**Access to this version can be obtained by emailing [information.standards@nhs.net](mailto:information.standards@nhs.net) with "NHS Data Model and Dictionary - Archive Request" in the email subject line.**

**INFORMATION AND ADVICE TYPE PROVIDED FOR NHS HEALTH CHECK (RETIRED)\_ renamed from INFORMATION AND ADVICE TYPE PROVIDED FOR NHS HEALTH CHECK**

Change to Attribute: Changed status to Retired, Name, Description

- Retired INFORMATION AND ADVICE TYPE PROVIDED FOR NHS HEALTH CHECK
- Changed Name from Data\_Dictionary.Attributes.I.In.INFORMATION\_AND\_ADVICE\_TYPE\_PROVIDED\_FOR\_NHS\_HEALTH\_CHECK to Retired.Data\_Dictionary.Attributes.I.INFORMATION\_AND\_ADVICE\_TYPE\_PROVIDED\_FOR\_NHS\_HEALTH\_CHECK
- Changed Description

**INVITATION OFFER SENT INDICATOR (RETIRED)\_ renamed from INVITATION OFFER SENT INDICATOR**

Change to Attribute: Changed status to Retired, Name, Description

An indicator of whether an invitation offer for an [APPOINTMENT](#) was sent. **This item has been retired from the NHS Data Model and Dictionary.**

**National Codes: The last live version of this item is available in the March 2019 release of the NHS Data Model and Dictionary.**

- Y Invitation offer sent
- N Invitation offer not sent

**Access to this version can be obtained by emailing [information.standards@nhs.net](mailto:information.standards@nhs.net) with "NHS Data Model and Dictionary - Archive Request" in the email subject line.**

**INVITATION OFFER SENT INDICATOR (RETIRED)\_ renamed from INVITATION OFFER SENT INDICATOR**

Change to Attribute: Changed status to Retired, Name, Description

- Retired INVITATION OFFER SENT INDICATOR
- Changed Name from Data\_Dictionary.Attributes.I.Int.INVITATION\_OFFER\_SENT\_INDICATOR to Retired.Data\_Dictionary.Attributes.I.INVITATION\_OFFER\_SENT\_INDICATOR
- Changed Description

**PATIENT DIAGNOSIS TYPE FOR NHS HEALTH CHECK (RETIRED)\_ renamed from PATIENT DIAGNOSIS TYPE FOR NHS HEALTH CHECK**

Change to Attribute: Changed status to Retired, Name, Description

The type of [PATIENT DIAGNOSIS](#) provided as a result of an [NHS Health Check Assessment](#). **This item has been retired from the NHS Data Model and Dictionary.**

**National Codes: The last live version of this item is available in the March 2019 release of the NHS Data Model and Dictionary.**

- 01 Chronic Kidney Disease Stage 3

- 02 Chronic Kidney Disease Stage 4
- 03 Chronic Kidney Disease Stage 5
- 04 Type 2 Diabetes
- 05 Hypertension
- 06 Non Diabetic Hyperglycaemia

Access to this version can be obtained by emailing [information.standards@nhs.net](mailto:information.standards@nhs.net) with "NHS Data Model and Dictionary - Archive Request" in the email subject line.

**PATIENT DIAGNOSIS TYPE FOR NHS HEALTH CHECK (RETIRED)**, renamed from PATIENT DIAGNOSIS TYPE FOR NHS HEALTH CHECK

Change to Attribute: Changed status to Retired, Name, Description

- Retired PATIENT DIAGNOSIS TYPE FOR NHS HEALTH CHECK
- Changed Name from Data\_Dictionary.Attributes.P.Pati.PATIENT\_DIAGNOSIS\_TYPE\_FOR\_NHS\_HEALTH\_CHECK to Retired.Data\_Dictionary.Attributes.P.PATIENT\_DIAGNOSIS\_TYPE\_FOR\_NHS\_HEALTH\_CHECK
- Changed Description

**PHYSICAL ACTIVITY LEVEL (RETIRED)**, renamed from PHYSICAL ACTIVITY LEVEL

Change to Attribute: Changed status to Retired, Name, Description

The Physical Activity Level as stated by a [PERSON](#). This item has been retired from the NHS Data Model and Dictionary.

**National Codes:** The last live version of this item is available in the March 2019 release of the NHS Data Model and Dictionary.

- 1 Inactive
- 2 Moderately Inactive
- 3 Moderately Active
- 4 Active

Access to this version can be obtained by emailing [information.standards@nhs.net](mailto:information.standards@nhs.net) with "NHS Data Model and Dictionary - Archive Request" in the email subject line.

**PHYSICAL ACTIVITY LEVEL (RETIRED)**, renamed from PHYSICAL ACTIVITY LEVEL

Change to Attribute: Changed status to Retired, Name, Description

- Retired PHYSICAL ACTIVITY LEVEL
- Changed Name from Data\_Dictionary.Attributes.P.Pha.PHYSICAL\_ACTIVITY\_LEVEL to Retired.Data\_Dictionary.Attributes.P.PHYSICAL\_ACTIVITY\_LEVEL
- Changed Description

**PRESCRIPTION PROVIDED INDICATOR (RETIRED)**, renamed from PRESCRIPTION PROVIDED INDICATOR

Change to Attribute: Changed status to Retired, Name, Description

An indication of whether a [PATIENT](#) was provided with a [PRESCRIPTION](#). This item has been retired from the NHS Data Model and Dictionary.

**National Codes:** The last live version of this item is available in the March 2019 release of the NHS Data Model and Dictionary.

- Y A [PRESCRIPTION](#) was provided
- N A [PRESCRIPTION](#) was not provided

Access to this version can be obtained by emailing [information.standards@nhs.net](mailto:information.standards@nhs.net) with "NHS Data Model and Dictionary - Archive Request" in the email subject line.

**PRESCRIPTION PROVIDED INDICATOR (RETIRED)**, renamed from PRESCRIPTION PROVIDED INDICATOR

Change to Attribute: Changed status to Retired, Name, Description

- Retired PRESCRIPTION PROVIDED INDICATOR
- Changed Name from Data\_Dictionary.Attributes.P.Pow.PRESCRIPTION\_PROVIDED\_INDICATOR to Retired.Data\_Dictionary.Attributes.P.PRESCRIPTION\_PROVIDED\_INDICATOR
- Changed Description

**PRESCRIPTION TYPE PROVIDED FOR NHS HEALTH CHECK (RETIRED)**, renamed from PRESCRIPTION TYPE PROVIDED FOR NHS HEALTH CHECK

Change to Attribute: Changed status to Retired, Name, Description

The type of [PRESCRIPTION](#) provided to a [PATIENT](#) as a result of an [NHS Health Check Assessment](#). This item has been retired from the NHS Data Model and Dictionary.

**National Codes:** The last live version of this item is available in the March 2019 release of the NHS Data Model and Dictionary.

- 01 Statins
- 02 Anti-Hypertensives

Access to this version can be obtained by emailing [information.standards@nhs.net](mailto:information.standards@nhs.net) with "NHS Data Model and Dictionary - Archive Request" in the email subject line.

---

**PRESCRIPTION TYPE PROVIDED FOR NHS HEALTH CHECK (RETIRED)**, renamed from PRESCRIPTION TYPE PROVIDED FOR NHS HEALTH CHECK

Change to Attribute: Changed status to Retired, Name, Description

- Retired PRESCRIPTION TYPE PROVIDED FOR NHS HEALTH CHECK
- Changed Name from Data\_Dictionary.Attributes.P.Pow.PRESCRIPTION\_TYPE\_PROVIDED\_FOR\_NHS\_HEALTH\_CHECK to Retired.Data\_Dictionary.Attributes.P.PRESCRIPTION\_TYPE\_PROVIDED\_FOR\_NHS\_HEALTH\_CHECK
- Changed Description

---

**REFERRAL REQUEST ACCEPTANCE INDICATOR (RETIRED)**, renamed from REFERRAL REQUEST ACCEPTANCE INDICATOR

Change to Attribute: Changed status to Retired, Name, Description

An indication of whether a [PATIENT](#) has accepted or declined to have a [REFERRAL REQUEST](#) made for them.

**National Codes:** This item has been retired from the NHS Data Model and Dictionary.

- A Accepted
- D Declined

The last live version of this item is available in the March 2019 release of the NHS Data Model and Dictionary.

Access to this version can be obtained by emailing [information.standards@nhs.net](mailto:information.standards@nhs.net) with "NHS Data Model and Dictionary - Archive Request" in the email subject line.

---

**REFERRAL REQUEST ACCEPTANCE INDICATOR (RETIRED)**, renamed from REFERRAL REQUEST ACCEPTANCE INDICATOR

Change to Attribute: Changed status to Retired, Name, Description

- Retired REFERRAL REQUEST ACCEPTANCE INDICATOR
- Changed Name from Data\_Dictionary.Attributes.R.Red.REFERRAL\_REQUEST\_ACCEPTANCE\_INDICATOR to Retired.Data\_Dictionary.Attributes.R.REFERRAL\_REQUEST\_ACCEPTANCE\_INDICATOR
- Changed Description

---

**REFERRAL REQUEST SERVICE TYPE FOR NHS HEALTH CHECK (RETIRED)**, renamed from REFERRAL REQUEST SERVICE TYPE FOR NHS HEALTH CHECK

Change to Attribute: Changed status to Retired, Name, Description

The type of [SERVICE](#) a [PATIENT](#) is referred to at an [NHS Health Check Assessment](#). This item has been retired from the NHS Data Model and Dictionary.

**National Codes:** The last live version of this item is available in the March 2019 release of the NHS Data Model and Dictionary.

- 01 Physical Activity Service
- 02 Stop Smoking Service
- 03 Weight Management Service

Access to this version can be obtained by emailing [information.standards@nhs.net](mailto:information.standards@nhs.net) with "NHS Data Model and Dictionary - Archive Request" in the email subject line.

---

**REFERRAL REQUEST SERVICE TYPE FOR NHS HEALTH CHECK (RETIRED)**, renamed from REFERRAL REQUEST SERVICE TYPE FOR NHS HEALTH CHECK

Change to Attribute: Changed status to Retired, Name, Description

- Retired REFERRAL REQUEST SERVICE TYPE FOR NHS HEALTH CHECK
- Changed Name from Data\_Dictionary.Attributes.R.Red.REFERRAL\_REQUEST\_SERVICE\_TYPE\_FOR\_NHS\_HEALTH\_CHECK to Retired.Data\_Dictionary.Attributes.R.REFERRAL\_REQUEST\_SERVICE\_TYPE\_FOR\_NHS\_HEALTH\_CHECK
- Changed Description

---

**SIGNPOSTING TO SERVICE INDICATOR (RETIRED)**, renamed from SIGNPOSTING TO SERVICE INDICATOR

Change to Attribute: Changed status to Retired, Name, Description

An indication of whether [Signposting](#) was provided to a [PATIENT](#). This item has been retired from the NHS Data Model and Dictionary.

**National Codes:** The last live version of this item is available in the March 2019 release of the NHS Data Model and Dictionary.

- Y [Signposting](#) was provided
- N [Signposting](#) was not provided

Access to this version can be obtained by emailing [information.standards@nhs.net](mailto:information.standards@nhs.net) with "NHS Data Model and Dictionary - Archive Request" in the email subject line.

---

**SIGNPOSTING TO SERVICE INDICATOR (RETIRED)**, renamed from SIGNPOSTING TO SERVICE INDICATOR

---

Change to Attribute: Changed status to Retired, Name, Description

- Retired SIGNPOSTING TO SERVICE INDICATOR
- Changed Name from [Data\\_Dictionary.Attributes.S.Sig.SIGNPOSTING\\_TO\\_SERVICE\\_INDICATOR](#) to [Retired.Data\\_Dictionary.Attributes.S.SIGNPOSTING\\_TO\\_SERVICE\\_INDICATOR](#)
- Changed Description

---

**SIGNPOSTING TO SERVICE TYPE FOR NHS HEALTH CHECK (RETIRED)**, renamed from SIGNPOSTING TO SERVICE TYPE FOR NHS HEALTH CHECK

---

Change to Attribute: Changed status to Retired, Name, Description

The type of [SERVICE](#) the [CARE PROFESSIONAL](#) is [Signposting](#) the [PATIENT](#) to, at an [NHS Health Check Assessment](#). This item has been retired from the NHS Data Model and Dictionary.

*National Codes:* The last live version of this item is available in the March 2019 release of the NHS Data Model and Dictionary.

- 01 Physical Activity Service
- 02 Stop Smoking Service
- 03 Weight Management Service

Access to this version can be obtained by emailing [information.standards@nhs.net](mailto:information.standards@nhs.net) with "NHS Data Model and Dictionary - Archive Request" in the email subject line.

---

**SIGNPOSTING TO SERVICE TYPE FOR NHS HEALTH CHECK (RETIRED)**, renamed from SIGNPOSTING TO SERVICE TYPE FOR NHS HEALTH CHECK

---

Change to Attribute: Changed status to Retired, Name, Description

- Retired SIGNPOSTING TO SERVICE TYPE FOR NHS HEALTH CHECK
- Changed Name from [Data\\_Dictionary.Attributes.S.Sig.SIGNPOSTING\\_TO\\_SERVICE\\_TYPE\\_FOR\\_NHS\\_HEALTH\\_CHECK](#) to [Retired.Data\\_Dictionary.Attributes.S.SIGNPOSTING\\_TO\\_SERVICE\\_TYPE\\_FOR\\_NHS\\_HEALTH\\_CHECK](#)
- Changed Description

---

**SMOKING STATUS**

---

Change to Attribute: Changed Description

The [SMOKING STATUS](#) of the [PERSON](#) at the time the [TOBACCO USAGE](#) is recorded.

*National Codes:*

- 1 Current smoker
- 2 Ex-smoker
- 3 Non-smoker - history unknown
- 4 Never smoked
- Z Not Stated ([PERSON](#) asked but declined to provide a response) \*

\* Note: Code valid for use in the [NHS Health Checks Data Set](#) and [Cancer Outcomes and Services Data Set](#) only. \* Note: Code valid for use in the [Cancer Outcomes and Services Data Set](#) only.

---

**TARGET POPULATION (RETIRED)**, renamed from TARGET POPULATION

---

Change to Attribute: Changed status to Retired, Name, Description

The cohort of people to be covered by a [HEALTH PROGRAMME](#). This item has been retired from the NHS Data Model and Dictionary.

The last live version of this item is available in the March 2019 release of the NHS Data Model and Dictionary.

Access to this version can be obtained by emailing [information.standards@nhs.net](mailto:information.standards@nhs.net) with "NHS Data Model and Dictionary - Archive Request" in the email subject line.

---

**TARGET POPULATION (RETIRED)**, renamed from TARGET POPULATION

---

Change to Attribute: Changed status to Retired, Name, Description

- Retired TARGET POPULATION
- Changed Name from Data\_Dictionary.Attributes.T.TARGET\_POPULATION to Retired.Data\_Dictionary.Attributes.T.TARGET\_POPULATION
- Changed Description

**ACTIVITY LOCATION TYPE CODE (NHS HEALTH CHECK) (RETIRED)**, renamed from **ACTIVITY LOCATION TYPE CODE (NHS HEALTH CHECK)**

Change to Data Element: Changed status to Retired, Name, Description

Format/Length:	See <a href="#">ACTIVITY LOCATION TYPE CODE</a>
National Codes:	
Default Codes:	

**Notes:**

[ACTIVITY LOCATION TYPE CODE \(NHS HEALTH CHECK\)](#) is the same as attribute [ACTIVITY LOCATION TYPE CODE](#), but the [NHS Health Checks Data Set](#) does not differentiate [GP Practices](#) by whether they are stand-alone practices (National Code C01), or where they are accommodated within in a Primary Health Care Centre (National Code B01) or Polyclinic (National Code B02).

Therefore for the purposes of the [NHS Health Checks Data Set](#), an additional derived value for 'General Medical Practitioner Premises' is allowed. This value should be derived for the [NHS Health Checks Data Set](#) where any of the National Codes above have been recorded as the [ACTIVITY LOCATION TYPE CODE](#) and the [NHS Health Check Assessment](#) activity took place in [GENERAL MEDICAL PRACTITIONER](#) accommodation (stand-alone or where located within Primary Care Health Centres or Polyclinics). **This item has been retired from the NHS Data Model and Dictionary.**

Additionally, the [NHS Health Checks Data Set](#) does not require a further breakdown of other [ACTIVITY LOCATION TYPE CODES](#) (except for [NHS Health Check Assessment](#) activity occurring in Dispensing Pharmacy premises), therefore an additional generic value for 'Any other [ACTIVITY LOCATION TYPE CODE](#) not stated above' is allowed. This value should be derived for the [NHS Health Checks Data Set](#) where the [NHS Health Check Assessment](#) was carried out in any [ACTIVITY LOCATION TYPE CODE](#) other than [GENERAL MEDICAL PRACTITIONER](#) premises as above, or where the activity occurs in a Dispensing Pharmacy premises. **The last live version of this item is available in the March 2019 release of the NHS Data Model and Dictionary.**

Where [NHS Health Check Assessments](#) are carried out in Primary Care Health Centres or Polyclinics, but NOT within the [GENERAL MEDICAL PRACTITIONER](#) accommodation in those [LOCATIONS](#), then value XXX should be returned. Access to this version can be obtained by emailing [information.standards@nhs.net](mailto:information.standards@nhs.net) with "NHS Data Model and Dictionary - Archive Request" in the email subject line.

**Permitted National Codes:**

- GXX [GENERAL MEDICAL PRACTITIONER](#) Premises (either stand-alone premises, where part of a Polyclinic, or where part of a Primary Care Health Centre)
- N05 Dispensing Pharmacy Premises (other than on a [Hospital Site](#))
- XXX Any other [ACTIVITY LOCATION TYPE CODE](#) not stated above

**ACTIVITY LOCATION TYPE CODE (NHS HEALTH CHECK) (RETIRED)**, renamed from **ACTIVITY LOCATION TYPE CODE (NHS HEALTH CHECK)**

Change to Data Element: Changed status to Retired, Name, Description

- Retired ACTIVITY LOCATION TYPE CODE (NHS HEALTH CHECK)
- Changed Name from Data\_Dictionary.Data\_Field\_Notes.A.Act.ACTIVITY\_LOCATION\_TYPE\_CODE\_(NHS\_HEALTH\_CHECK) to Retired.Data\_Dictionary.Data\_Field\_Notes.A.ACTIVITY\_LOCATION\_TYPE\_CODE\_(NHS\_HEALTH\_CHECK)
- Changed Description

**AGE AT ATTENDANCE DATE**

Change to Data Element: Changed Description

Format/Length:	n3
National Codes:	
Default Codes:	999 - Not known i.e. date of birth not known and age cannot be estimated. <b>Note that this code is NOT valid for the <a href="#">NHS Health Checks Data Set</a></b>
Default Codes:	999 - Not known i.e. date of birth not known and age cannot be estimated.

**Notes:**

[AGE AT ATTENDANCE DATE](#) is derived as the number of completed years between the [PERSON BIRTH DATE](#) of the [PATIENT](#) and the [ATTENDANCE DATE](#) or the estimated age of the [PATIENT](#).

**Note that default code 999 is NOT valid for the [NHS Health Checks Data Set](#).**

**BRIEF INTERVENTION PROVIDED INDICATOR (PHYSICAL ACTIVITY BRIEF) (RETIRED)**, renamed from **BRIEF INTERVENTION PROVIDED INDICATOR (PHYSICAL ACTIVITY BRIEF)**

Change to Data Element: Changed linked Attribute, status to Retired, Name, Description

Format/Length:	an4
National Codes:	See <a href="#">BRIEF INTERVENTION PROVIDED INDICATOR</a>
Default Codes:	

**Notes:**

~~[BRIEF INTERVENTION PROVIDED INDICATOR \(PHYSICAL ACTIVITY BRIEF\)](#) is the same as attribute [BRIEF INTERVENTION PROVIDED INDICATOR](#).~~

~~For the [NHS Health Checks Data Set](#), this is an indication of whether a [Brief Intervention](#), where the [BRIEF INTERVENTION TYPE FOR NHS HEALTH CHECK](#) is National Code 'Physical Activity Brief', is provided during an [NHS Health Check Assessment](#). This item has been retired from the NHS Data Model and Dictionary.~~

The last live version of this item is available in the March 2019 release of the NHS Data Model and Dictionary.

Access to this version can be obtained by emailing [information.standards@nhs.net](mailto:information.standards@nhs.net) with "NHS Data Model and Dictionary - Archive Request" in the email subject line.

**BRIEF INTERVENTION PROVIDED INDICATOR (PHYSICAL ACTIVITY BRIEF) (RETIRED)**, renamed from **BRIEF INTERVENTION PROVIDED INDICATOR (PHYSICAL ACTIVITY BRIEF)**

Change to Data Element: Changed linked Attribute, status to Retired, Name, Description

**BRIEF INTERVENTION PROVIDED INDICATOR (PHYSICAL ACTIVITY BRIEF)**

**Attributes:**

[BRIEF INTERVENTION PROVIDED INDICATOR](#)

**BRIEF INTERVENTION PROVIDED INDICATOR (PHYSICAL ACTIVITY BRIEF) (RETIRED)**, renamed from **BRIEF INTERVENTION PROVIDED INDICATOR (PHYSICAL ACTIVITY BRIEF)**

Change to Data Element: Changed linked Attribute, status to Retired, Name, Description

- null
- Retired BRIEF INTERVENTION PROVIDED INDICATOR (PHYSICAL ACTIVITY BRIEF)
- Changed Name from Data\_Dictionary.Data\_Field\_Notes.B.Br.BRIEF\_INTERVENTION\_PROVIDED\_INDICATOR\_(PHYSICAL\_ACTIVITY\_BRIEF) to Retired.Data\_Dictionary.Data\_Field\_Notes.B.BRIEF\_INTERVENTION\_PROVIDED\_INDICATOR\_(PHYSICAL\_ACTIVITY\_BRIEF)
- Changed Description

**CARDIOVASCULAR DISEASE RISK SCORE (RETIRED)**, renamed from **CARDIOVASCULAR DISEASE RISK SCORE**

Change to Data Element: Changed linked Attribute, status to Retired, Name, Description

Format/Length:	n2.n2
National Codes:	
Default Codes:	

**Notes:**

~~[CARDIOVASCULAR DISEASE RISK SCORE](#) is the [PERSON SCORE](#) calculated from the [Cardiovascular Disease Risk Calculator](#). This item has been retired from the NHS Data Model and Dictionary.~~

The last live version of this item is available in the March 2019 release of the NHS Data Model and Dictionary.

Access to this version can be obtained by emailing [information.standards@nhs.net](mailto:information.standards@nhs.net) with "NHS Data Model and Dictionary - Archive Request" in the email subject line.

**CARDIOVASCULAR DISEASE RISK SCORE (RETIRED)**, renamed from **CARDIOVASCULAR DISEASE RISK SCORE**

Change to Data Element: Changed linked Attribute, status to Retired, Name, Description

**CARDIOVASCULAR DISEASE RISK SCORE**

**Attributes:**

[PERSON SCORE](#)

**CARDIOVASCULAR DISEASE RISK SCORE (RETIRED)**, renamed from **CARDIOVASCULAR DISEASE RISK SCORE**

Change to Data Element: Changed linked Attribute, status to Retired, Name, Description

- null
- Retired CARDIOVASCULAR DISEASE RISK SCORE
- Changed Name from Data\_Dictionary.Data\_Field\_Notes.C.CARDIOVASCULAR\_DISEASE\_RISK\_SCORE to Retired.Data\_Dictionary.Data\_Field\_Notes.C.CARDIOVASCULAR\_DISEASE\_RISK\_SCORE
- Changed Description

**ELIGIBLE POPULATION TOTAL (NHS HEALTH CHECK) (RETIRED)**, renamed from **ELIGIBLE POPULATION TOTAL (NHS HEALTH CHECK)**

Change to Data Element: Changed status to Retired, Name, Description

Format/Length:	n8
National Codes:	
Default Codes:	

**Notes:**

~~[ELIGIBLE POPULATION TOTAL \(NHS HEALTH CHECK\)](#) is the number of [PATIENTS](#) in the [TARGET POPULATION](#) within the [REPORTING PERIOD](#) for the [NHS Health Check Programme](#).~~

~~The [NHS Health Check Programme](#) eligible population is all people aged between 40 and 74 in England, who have not previously been diagnosed with diabetes, hypertension, chronic heart disease or kidney disease. This item has been retired from the NHS Data Model and Dictionary.~~

**The last live version of this item is available in the March 2019 release of the NHS Data Model and Dictionary.**

**Access to this version can be obtained by emailing [information.standards@nhs.net](mailto:information.standards@nhs.net) with "NHS Data Model and Dictionary - Archive Request" in the email subject line.**

---

**ELIGIBLE POPULATION TOTAL (NHS HEALTH CHECK) (RETIRED)**, renamed from **ELIGIBLE POPULATION TOTAL (NHS HEALTH CHECK)**

Change to Data Element: Changed status to Retired, Name, Description

- Retired ELIGIBLE POPULATION TOTAL (NHS HEALTH CHECK)
- Changed Name from Data\_Dictionary.Data\_Field\_Notes.E.ELIGIBLE\_POPULATION\_TOTAL\_(NHS\_HEALTH\_CHECK) to Retired.Data\_Dictionary.Data\_Field\_Notes.E.ELIGIBLE\_POPULATION\_TOTAL\_(NHS\_HEALTH\_CHECK)
- Changed Description

---

**FURTHER ASSESSMENT REQUIRED INDICATOR (DIABETES ASSESSMENT) (RETIRED)**, renamed from **FURTHER ASSESSMENT REQUIRED INDICATOR (DIABETES ASSESSMENT)**

Change to Data Element: Changed linked Attribute, status to Retired, Name, Description

Format/Length:	an1
National Codes:	See <a href="#">DECISION TO UNDERTAKE FURTHER ASSESSMENT INDICATOR</a>
Default Codes:	

**Notes:**

~~[FURTHER ASSESSMENT REQUIRED INDICATOR \(DIABETES ASSESSMENT\)](#) is the same as attribute [DECISION TO UNDERTAKE FURTHER ASSESSMENT INDICATOR](#). This item has been retired from the NHS Data Model and Dictionary.~~

~~For the [NHS Health Checks Data Set](#), this is an indication of whether a decision was taken that further assessment of the [PATIENT](#)'s condition is required, where the [FURTHER ASSESSMENT TYPE FOR NHS HEALTH CHECK](#) recorded is National Code 'Diabetes Assessment'. The last live version of this item is available in the March 2019 release of the NHS Data Model and Dictionary.~~

**Access to this version can be obtained by emailing [information.standards@nhs.net](mailto:information.standards@nhs.net) with "NHS Data Model and Dictionary - Archive Request" in the email subject line.**

---

**FURTHER ASSESSMENT REQUIRED INDICATOR (DIABETES ASSESSMENT) (RETIRED)**, renamed from **FURTHER ASSESSMENT REQUIRED INDICATOR (DIABETES ASSESSMENT)**

Change to Data Element: Changed linked Attribute, status to Retired, Name, Description

**FURTHER ASSESSMENT REQUIRED INDICATOR (DIABETES ASSESSMENT)**

**Attributes:**

<a href="#">DECISION TO UNDERTAKE FURTHER ASSESSMENT INDICATOR</a>
--

---

**FURTHER ASSESSMENT REQUIRED INDICATOR (DIABETES ASSESSMENT) (RETIRED)**, renamed from **FURTHER ASSESSMENT REQUIRED INDICATOR (DIABETES ASSESSMENT)**

Change to Data Element: Changed linked Attribute, status to Retired, Name, Description

- null
- Retired FURTHER ASSESSMENT REQUIRED INDICATOR (DIABETES ASSESSMENT)
- Changed Name from Data\_Dictionary.Data\_Field\_Notes.F.Fo.FURTHER\_ASSESSMENT\_REQUIRED\_INDICATOR\_(DIABETES\_ASSESSMENT) to Retired.Data\_Dictionary.Data\_Field\_Notes.F.FURTHER\_ASSESSMENT\_REQUIRED\_INDICATOR\_(DIABETES\_ASSESSMENT)
- Changed Description

---

**FURTHER ASSESSMENT REQUIRED INDICATOR (FASTING CHOLESTEROL ASSESSMENT) (RETIRED)**, renamed from **FURTHER ASSESSMENT REQUIRED INDICATOR (FASTING CHOLESTEROL ASSESSMENT)**

Change to Data Element: Changed linked Attribute, status to Retired, Name, Description

Format/Length:	an4
National Codes:	See <a href="#">DECISION TO UNDERTAKE FURTHER ASSESSMENT INDICATOR</a>
Default Codes:	

**Notes:**

~~FURTHER ASSESSMENT REQUIRED INDICATOR (FASTING CHOLESTEROL ASSESSMENT) is the same as attribute DECISION TO UNDERTAKE FURTHER ASSESSMENT INDICATOR. This item has been retired from the NHS Data Model and Dictionary.~~

For the [NHS Health Checks Data Set](#), this is an indication of whether a decision was taken that further assessment of the [PATIENT](#)'s condition is required, where the [FURTHER ASSESSMENT TYPE FOR NHS HEALTH CHECK](#) recorded is National Code 'Fasting Cholesterol Assessment'. The last live version of this item is available in the March 2019 release of the NHS Data Model and Dictionary.

Access to this version can be obtained by emailing [information.standards@nhs.net](mailto:information.standards@nhs.net) with "NHS Data Model and Dictionary - Archive Request" in the email subject line.

---

**FURTHER ASSESSMENT REQUIRED INDICATOR (FASTING CHOLESTEROL ASSESSMENT) (RETIRED)**\_renamed from **FURTHER ASSESSMENT REQUIRED INDICATOR (FASTING CHOLESTEROL ASSESSMENT)**

Change to Data Element: Changed linked Attribute, status to Retired, Name, Description

**FURTHER ASSESSMENT REQUIRED INDICATOR (FASTING CHOLESTEROL ASSESSMENT)**

**Attribute:**

<a href="#">DECISION TO UNDERTAKE FURTHER ASSESSMENT INDICATOR</a>
--

---

**FURTHER ASSESSMENT REQUIRED INDICATOR (FASTING CHOLESTEROL ASSESSMENT) (RETIRED)**\_renamed from **FURTHER ASSESSMENT REQUIRED INDICATOR (FASTING CHOLESTEROL ASSESSMENT)**

Change to Data Element: Changed linked Attribute, status to Retired, Name, Description

- null
- Retired FURTHER ASSESSMENT REQUIRED INDICATOR (FASTING CHOLESTEROL ASSESSMENT)
- Changed Name from Data\_Dictionary.Data\_Field\_Notes.F.Fo.FURTHER\_ASSESSMENT\_REQUIRED\_INDICATOR\_ (FASTING\_CHOLESTEROL\_ASSESSMENT) to Retired.Data\_Dictionary.Data\_Field\_Notes.F.FURTHER\_ASSESSMENT\_REQUIRED\_INDICATOR\_ (FASTING\_CHOLESTEROL\_ASSESSMENT)
- Changed Description

---

**FURTHER ASSESSMENT REQUIRED INDICATOR (HYPERTENSION ASSESSMENT) (RETIRED)**\_renamed from **FURTHER ASSESSMENT REQUIRED INDICATOR (HYPERTENSION ASSESSMENT)**

Change to Data Element: Changed linked Attribute, status to Retired, Name, Description

Format/Length:	an4
National Codes:	See <a href="#">DECISION TO UNDERTAKE FURTHER ASSESSMENT INDICATOR</a>
Default Codes:	

**Notes:**

~~FURTHER ASSESSMENT REQUIRED INDICATOR (HYPERTENSION ASSESSMENT) is the same as attribute DECISION TO UNDERTAKE FURTHER ASSESSMENT INDICATOR. This item has been retired from the NHS Data Model and Dictionary.~~

For the [NHS Health Checks Data Set](#), this is an indication of whether a decision was taken that further assessment of the [PATIENT](#)'s condition is required, where the [FURTHER ASSESSMENT TYPE FOR NHS HEALTH CHECK](#) recorded is National Code 'Hypertension Assessment'. The last live version of this item is available in the March 2019 release of the NHS Data Model and Dictionary.

Access to this version can be obtained by emailing [information.standards@nhs.net](mailto:information.standards@nhs.net) with "NHS Data Model and Dictionary - Archive Request" in the email subject line.

---

**FURTHER ASSESSMENT REQUIRED INDICATOR (HYPERTENSION ASSESSMENT) (RETIRED)**\_renamed from **FURTHER ASSESSMENT REQUIRED INDICATOR (HYPERTENSION ASSESSMENT)**

Change to Data Element: Changed linked Attribute, status to Retired, Name, Description

**FURTHER ASSESSMENT REQUIRED INDICATOR (HYPERTENSION ASSESSMENT)**

**Attribute:**

<a href="#">DECISION TO UNDERTAKE FURTHER ASSESSMENT INDICATOR</a>
--



**FURTHER ASSESSMENT REQUIRED INDICATOR (HYPERTENSION ASSESSMENT) (RETIRED)\_ renamed from FURTHER ASSESSMENT REQUIRED INDICATOR (HYPERTENSION ASSESSMENT)**

Change to Data Element: Changed linked Attribute, status to Retired, Name, Description

- null
- Retired FURTHER ASSESSMENT REQUIRED INDICATOR (HYPERTENSION ASSESSMENT)
- Changed Name from Data\_Dictionary.Data\_Field\_Notes.F.Fo.FURTHER\_ASSESSMENT\_REQUIRED\_INDICATOR\_(HYPERTENSION\_ASSESSMENT) to Retired.Data\_Dictionary.Data\_Field\_Notes.F.FURTHER\_ASSESSMENT\_REQUIRED\_INDICATOR\_(HYPERTENSION\_ASSESSMENT)
- Changed Description

**FURTHER ASSESSMENT REQUIRED INDICATOR (IMPAIRED FASTING GLYCAEMIA IMPAIRED GLUCOSE TOLERANCE LIFESTYLE MANAGEMENT) (RETIRED)\_ renamed from FURTHER ASSESSMENT REQUIRED INDICATOR (IMPAIRED FASTING GLYCAEMIA IMPAIRED GLUCOSE TOLERANCE LIFESTYLE MANAGEMENT)**

Change to Data Element: Changed linked Attribute, status to Retired, Name, Description

Format/Length:	an1
National Codes:	See <a href="#">DECISION TO UNDERTAKE FURTHER ASSESSMENT INDICATOR</a>
Default Codes:	

**Notes:**

~~[FURTHER ASSESSMENT REQUIRED INDICATOR \(IMPAIRED FASTING GLYCAEMIA IMPAIRED GLUCOSE TOLERANCE LIFESTYLE MANAGEMENT\)](#) is the same as attribute [DECISION TO UNDERTAKE FURTHER ASSESSMENT INDICATOR](#). This item has been retired from the NHS Data Model and Dictionary.~~

For the [NHS Health Checks Data Set](#), this is an indication of whether a decision was taken that further assessment of the [PATIENT](#)'s condition is required, where the [FURTHER ASSESSMENT TYPE FOR NHS HEALTH CHECK](#) recorded is National Code '*Impaired Fasting Glycaemia Impaired Glucose Tolerance Lifestyle Management*'. The last live version of this item is available in the March 2019 release of the NHS Data Model and Dictionary.

Access to this version can be obtained by emailing [information.standards@nhs.net](mailto:information.standards@nhs.net) with "NHS Data Model and Dictionary - Archive Request" in the email subject line.

**FURTHER ASSESSMENT REQUIRED INDICATOR (IMPAIRED FASTING GLYCAEMIA IMPAIRED GLUCOSE TOLERANCE LIFESTYLE MANAGEMENT) (RETIRED)\_ renamed from FURTHER ASSESSMENT REQUIRED INDICATOR (IMPAIRED FASTING GLYCAEMIA IMPAIRED GLUCOSE TOLERANCE LIFESTYLE MANAGEMENT)**

Change to Data Element: Changed linked Attribute, status to Retired, Name, Description

**~~FURTHER ASSESSMENT REQUIRED INDICATOR (IMPAIRED FASTING GLYCAEMIA IMPAIRED GLUCOSE TOLERANCE LIFESTYLE MANAGEMENT)~~**

**Attribute:**

~~[DECISION TO UNDERTAKE FURTHER ASSESSMENT INDICATOR](#)~~

**FURTHER ASSESSMENT REQUIRED INDICATOR (IMPAIRED FASTING GLYCAEMIA IMPAIRED GLUCOSE TOLERANCE LIFESTYLE MANAGEMENT) (RETIRED)\_ renamed from FURTHER ASSESSMENT REQUIRED INDICATOR (IMPAIRED FASTING GLYCAEMIA IMPAIRED GLUCOSE TOLERANCE LIFESTYLE MANAGEMENT)**

Change to Data Element: Changed linked Attribute, status to Retired, Name, Description

- null
- Retired FURTHER ASSESSMENT REQUIRED INDICATOR (IMPAIRED FASTING GLYCAEMIA IMPAIRED GLUCOSE TOLERANCE LIFESTYLE MANAGEMENT)
- Changed Name from Data\_Dictionary.Data\_Field\_Notes.F.Fo.FURTHER\_ASSESSMENT\_REQUIRED\_INDICATOR\_(IMPAIRED\_FASTING\_GLYCAEMIA\_IMPAIRED\_GLUCOSE\_TOLERANCE\_LIFESTYLE\_MANAGEMENT) to Retired.Data\_Dictionary.Data\_Field\_Notes.F.FURTHER\_ASSESSMENT\_REQUIRED\_INDICATOR\_(IMPAIRED\_FASTING\_GLYCAEMIA\_IMPAIRED\_GLUCOSE\_TOLERANCE\_LIFESTYLE\_MANAGEMENT)
- Changed Description

**FURTHER ASSESSMENT REQUIRED INDICATOR (SERUM CREATININE ASSESSMENT) (RETIRED)\_ renamed from FURTHER ASSESSMENT REQUIRED INDICATOR (SERUM CREATININE ASSESSMENT)**

Change to Data Element: Changed linked Attribute, status to Retired, Name, Description

Format/Length:	an1
National Codes:	See <a href="#">DECISION TO UNDERTAKE FURTHER ASSESSMENT INDICATOR</a>
Default Codes:	

**Notes:**

~~[FURTHER ASSESSMENT REQUIRED INDICATOR \(SERUM CREATININE ASSESSMENT\)](#) is the same as attribute [DECISION TO UNDERTAKE FURTHER ASSESSMENT INDICATOR](#). This item has been retired from the NHS Data Model and Dictionary.~~

For the [NHS Health Checks Data Set](#), this is an indication of whether a decision was taken that further assessment of the [PATIENT](#)'s condition is required, where the [FURTHER ASSESSMENT TYPE FOR NHS HEALTH CHECK](#) recorded is National Code 'Serum Creatinine Assessment'. The last live version of this item is available in the March 2019 release of the NHS Data Model and Dictionary.

Access to this version can be obtained by emailing [information.standards@nhs.net](mailto:information.standards@nhs.net) with "NHS Data Model and Dictionary - Archive Request" in the email subject line.

---

**FURTHER ASSESSMENT REQUIRED INDICATOR (SERUM CREATININE ASSESSMENT) (RETIRED)**, renamed from FURTHER ASSESSMENT REQUIRED INDICATOR (SERUM CREATININE ASSESSMENT)

---

Change to Data Element: Changed linked Attribute, status to Retired, Name, Description

**FURTHER ASSESSMENT REQUIRED INDICATOR (SERUM CREATININE ASSESSMENT)**

Attributes:

[DECISION TO UNDERTAKE FURTHER ASSESSMENT INDICATOR](#)

---

**FURTHER ASSESSMENT REQUIRED INDICATOR (SERUM CREATININE ASSESSMENT) (RETIRED)**, renamed from FURTHER ASSESSMENT REQUIRED INDICATOR (SERUM CREATININE ASSESSMENT)

---

Change to Data Element: Changed linked Attribute, status to Retired, Name, Description

- null
- Retired FURTHER ASSESSMENT REQUIRED INDICATOR (SERUM CREATININE ASSESSMENT)
- Changed Name from Data\_Dictionary.Data\_Field\_Notes.F.Fo.FURTHER\_ASSESSMENT\_REQUIRED\_INDICATOR\_(SERUM\_CREATININE\_ASSESSMENT) to Retired.Data\_Dictionary.Data\_Field\_Notes.F.FURTHER\_ASSESSMENT\_REQUIRED\_INDICATOR\_(SERUM\_CREATININE\_ASSESSMENT)
- Changed Description

---

**INFORMATION AND ADVICE PROVIDED INDICATOR (GENERAL LIFESTYLE ADVICE) (RETIRED)**, renamed from INFORMATION AND ADVICE PROVIDED INDICATOR (GENERAL LIFESTYLE ADVICE)

---

Change to Data Element: Changed linked Attribute, status to Retired, Name, Description

Format/Length: an4  
National Codes: See [INFORMATION AND ADVICE PROVIDED INDICATOR](#)  
Default Codes:

**Notes:**

[INFORMATION AND ADVICE PROVIDED INDICATOR \(GENERAL LIFESTYLE ADVICE\)](#) is the same as attribute [INFORMATION AND ADVICE PROVIDED INDICATOR](#). This item has been retired from the NHS Data Model and Dictionary.

For the [NHS Health Checks Data Set](#), this is an indication of whether a [PATIENT](#) was provided with information and advice where the [INFORMATION AND ADVICE TYPE PROVIDED FOR NHS HEALTH CHECK](#) is National Code 'General Lifestyle Advice', during an [NHS Health Check Assessment](#). The last live version of this item is available in the March 2019 release of the NHS Data Model and Dictionary.

Access to this version can be obtained by emailing [information.standards@nhs.net](mailto:information.standards@nhs.net) with "NHS Data Model and Dictionary - Archive Request" in the email subject line.

---

**INFORMATION AND ADVICE PROVIDED INDICATOR (GENERAL LIFESTYLE ADVICE) (RETIRED)**, renamed from INFORMATION AND ADVICE PROVIDED INDICATOR (GENERAL LIFESTYLE ADVICE)

---

Change to Data Element: Changed linked Attribute, status to Retired, Name, Description

**INFORMATION AND ADVICE PROVIDED INDICATOR (GENERAL LIFESTYLE ADVICE)**

Attributes:

[INFORMATION AND ADVICE PROVIDED INDICATOR](#)

---

**INFORMATION AND ADVICE PROVIDED INDICATOR (GENERAL LIFESTYLE ADVICE) (RETIRED)**, renamed from INFORMATION AND ADVICE PROVIDED INDICATOR (GENERAL LIFESTYLE ADVICE)

---

Change to Data Element: Changed linked Attribute, status to Retired, Name, Description

- null
- Retired INFORMATION AND ADVICE PROVIDED INDICATOR (GENERAL LIFESTYLE ADVICE)
- Changed Name from Data\_Dictionary.Data\_Field\_Notes.I.In.INFORMATION\_AND\_ADVICE\_PROVIDED\_INDICATOR\_(GENERAL\_LIFESTYLE\_ADVICE) to Retired.Data\_Dictionary.Data\_Field\_Notes.I.INFORMATION\_AND\_ADVICE\_PROVIDED\_INDICATOR\_(GENERAL\_LIFESTYLE\_ADVICE)
- Changed Description

**INFORMATION AND ADVICE PROVIDED INDICATOR (STOP SMOKING ADVICE) (RETIRED)\_ renamed from INFORMATION AND ADVICE PROVIDED INDICATOR (STOP SMOKING ADVICE)**

Change to Data Element: Changed linked Attribute, status to Retired, Name, Description

Format/Length:	an4
National Codes:	See <a href="#">INFORMATION AND ADVICE PROVIDED INDICATOR</a>
Default Codes:	

**Notes:**

~~[INFORMATION AND ADVICE PROVIDED INDICATOR \(STOP SMOKING ADVICE\)](#) is the same as attribute [INFORMATION AND ADVICE PROVIDED INDICATOR](#). This item has been retired from the NHS Data Model and Dictionary.~~

~~For the [NHS Health Checks Data Set](#), this is an indication of whether a [PATIENT](#) was provided with information and advice where the [INFORMATION AND ADVICE TYPE PROVIDED FOR NHS HEALTH CHECK](#) is National Code 'Stop Smoking Advice', during an [NHS Health Check Assessment](#). The last live version of this item is available in the March 2019 release of the NHS Data Model and Dictionary.~~

Access to this version can be obtained by emailing [information.standards@nhs.net](mailto:information.standards@nhs.net) with "NHS Data Model and Dictionary - Archive Request" in the email subject line.

**INFORMATION AND ADVICE PROVIDED INDICATOR (STOP SMOKING ADVICE) (RETIRED)\_ renamed from INFORMATION AND ADVICE PROVIDED INDICATOR (STOP SMOKING ADVICE)**

Change to Data Element: Changed linked Attribute, status to Retired, Name, Description

**INFORMATION AND ADVICE PROVIDED INDICATOR (STOP SMOKING ADVICE)**

**Attribute:**

[INFORMATION AND ADVICE PROVIDED INDICATOR](#)

**INFORMATION AND ADVICE PROVIDED INDICATOR (STOP SMOKING ADVICE) (RETIRED)\_ renamed from INFORMATION AND ADVICE PROVIDED INDICATOR (STOP SMOKING ADVICE)**

Change to Data Element: Changed linked Attribute, status to Retired, Name, Description

- null
- Retired INFORMATION AND ADVICE PROVIDED INDICATOR (STOP SMOKING ADVICE)
- Changed Name from Data.Dictionary.Data\_Field\_Notes.I.In.INFORMATION\_AND\_ADVICE\_PROVIDED\_INDICATOR\_(STOP\_SMOKING\_ADVICE) to Retired.Data.Dictionary.Data\_Field\_Notes.I.INFORMATION\_AND\_ADVICE\_PROVIDED\_INDICATOR\_(STOP\_SMOKING\_ADVICE)
- Changed Description

**INFORMATION AND ADVICE PROVIDED INDICATOR (WEIGHT MANAGEMENT ADVICE) (RETIRED)\_ renamed from INFORMATION AND ADVICE PROVIDED INDICATOR (WEIGHT MANAGEMENT ADVICE)**

Change to Data Element: Changed linked Attribute, status to Retired, Name, Description

Format/Length:	an4
National Codes:	See <a href="#">INFORMATION AND ADVICE PROVIDED INDICATOR</a>
Default Codes:	

**Notes:**

~~[INFORMATION AND ADVICE PROVIDED INDICATOR \(WEIGHT MANAGEMENT ADVICE\)](#) is the same as attribute [INFORMATION AND ADVICE PROVIDED INDICATOR](#). This item has been retired from the NHS Data Model and Dictionary.~~

~~For the [NHS Health Checks Data Set](#) this is an indication of whether a [PATIENT](#) was provided with information and advice where the [INFORMATION AND ADVICE TYPE PROVIDED FOR NHS HEALTH CHECK](#) is National Code 'Weight Management Advice', during an [NHS Health Check Assessment](#). The last live version of this item is available in the March 2019 release of the NHS Data Model and Dictionary.~~

Access to this version can be obtained by emailing [information.standards@nhs.net](mailto:information.standards@nhs.net) with "NHS Data Model and Dictionary - Archive Request" in the email subject line.

**INFORMATION AND ADVICE PROVIDED INDICATOR (WEIGHT MANAGEMENT ADVICE) (RETIRED)\_ renamed from INFORMATION AND ADVICE PROVIDED INDICATOR (WEIGHT MANAGEMENT ADVICE)**

Change to Data Element: Changed linked Attribute, status to Retired, Name, Description

**INFORMATION AND ADVICE PROVIDED INDICATOR (WEIGHT MANAGEMENT ADVICE)**

**Attribute:**

[INFORMATION AND ADVICE PROVIDED INDICATOR](#)

**INFORMATION AND ADVICE PROVIDED INDICATOR (WEIGHT MANAGEMENT ADVICE) (RETIRED)** renamed from **INFORMATION AND ADVICE PROVIDED INDICATOR (WEIGHT MANAGEMENT ADVICE)**

Change to Data Element: Changed linked Attribute, status to Retired, Name, Description

- null
- Retired INFORMATION AND ADVICE PROVIDED INDICATOR (WEIGHT MANAGEMENT ADVICE)
- Changed Name from Data\_Dictionary.Data\_Field\_Notes.I.In.INFORMATION\_AND\_ADVICE\_PROVIDED\_INDICATOR\_(WEIGHT\_MANAGEMENT\_ADVICE) to Retired.Data\_Dictionary.Data\_Field\_Notes.I.INFORMATION\_AND\_ADVICE\_PROVIDED\_INDICATOR\_(WEIGHT\_MANAGEMENT\_ADVICE)
- Changed Description

**INVITATION OFFER SENT INDICATOR (NHS HEALTH CHECK) (RETIRED)** renamed from **INVITATION OFFER SENT INDICATOR (NHS HEALTH CHECK)**

Change to Data Element: Changed linked Attribute, status to Retired, Name, Description

Format/Length:	an4
National Codes:	See <a href="#">INVITATION OFFER SENT INDICATOR</a>
Default Codes:	

**Notes:**

[INVITATION OFFER SENT INDICATOR \(NHS HEALTH CHECK\)](#) is the same as attribute [INVITATION OFFER SENT INDICATOR](#).

[INVITATION OFFER SENT INDICATOR \(NHS HEALTH CHECK\)](#) is an indication of whether an offer was sent to a [PERSON](#) for an [NHS Health Check Assessment](#). **This item has been retired from the NHS Data Model and Dictionary.**

**The last live version of this item is available in the March 2019 release of the NHS Data Model and Dictionary.**

**Access to this version can be obtained by emailing [information.standards@nhs.net](mailto:information.standards@nhs.net) with "NHS Data Model and Dictionary - Archive Request" in the email subject line.**

**INVITATION OFFER SENT INDICATOR (NHS HEALTH CHECK) (RETIRED)** renamed from **INVITATION OFFER SENT INDICATOR (NHS HEALTH CHECK)**

Change to Data Element: Changed linked Attribute, status to Retired, Name, Description

**INVITATION OFFER SENT INDICATOR (NHS HEALTH CHECK)**

**Attribute:**

<a href="#">INVITATION OFFER SENT INDICATOR</a>
---

**INVITATION OFFER SENT INDICATOR (NHS HEALTH CHECK) (RETIRED)** renamed from **INVITATION OFFER SENT INDICATOR (NHS HEALTH CHECK)**

Change to Data Element: Changed linked Attribute, status to Retired, Name, Description

- null
- Retired INVITATION OFFER SENT INDICATOR (NHS HEALTH CHECK)
- Changed Name from Data\_Dictionary.Data\_Field\_Notes.I.Inv.INVITATION\_OFFER\_SENT\_INDICATOR\_(NHS HEALTH CHECK) to Retired.Data\_Dictionary.Data\_Field\_Notes.I.INVITATION\_OFFER\_SENT\_INDICATOR\_(NHS HEALTH CHECK)
- Changed Description

**LOWER LAYER SUPER OUTPUT AREA (PERSON RESIDENCE)**

Change to Data Element: Changed Description

Format/Length:	max an9
National Codes:	
Default Codes:	X99999998 - Not Applicable (outside the United Kingdom) X99999999 - Not Known

**Notes:**

[LOWER LAYER SUPER OUTPUT AREA \(PERSON RESIDENCE\)](#) is the same as attribute [GEOGRAPHIC AREA CODE](#) for a [Lower Layer Super Output Area](#).

[LOWER LAYER SUPER OUTPUT AREA \(PERSON RESIDENCE\)](#) is the [Lower Layer Super Output Area](#) for where the [PERSON](#) is resident.

For guidance on the [Lower Layer Super Output Area](#) codes, see the [NHS Postcode Directory](#) which can be downloaded from the [Organisation Data Service](#) pages of the [NHS Digital](#) website at: [NHS Postcode Directory User Guide](#).

~~[LOWER LAYER SUPER OUTPUT AREA \(RESIDENCE\)](#) will be replaced with [LOWER LAYER SUPER OUTPUT AREA \(PERSON RESIDENCE\)](#), when it has been approved for use in national information standards.~~

**LOWER LAYER SUPER OUTPUT AREA (RESIDENCE) (RETIRED)** renamed from **LOWER LAYER SUPER OUTPUT AREA (RESIDENCE)**

Change to Data Element: Changed status to Retired, Name, Description

Format/Length:	aaaaaaaa
National Codes:	
Default Codes:	Z00000000 – Scotland, Northern Ireland, Channel Islands, Isle of Man X00000000 – Not Applicable (outside the United Kingdom) X00000000 – Not Known

**Notes:**

LOWER\_LAYER\_SUPER\_OUTPUT\_AREA (RESIDENCE) is the Lower Layer Super Output Area for where the PATIENT is resident

LOWER\_LAYER\_SUPER\_OUTPUT\_AREA (RESIDENCE) will be replaced with LOWER\_LAYER\_SUPER\_OUTPUT\_AREA (PERSON RESIDENCE), when it has been approved for use in national information standards. This item has been retired from the NHS Data Model and Dictionary.

The last live version of this item is available in the March 2019 release of the NHS Data Model and Dictionary.

Access to this version can be obtained by emailing [information.standards@nhs.net](mailto:information.standards@nhs.net) with "NHS Data Model and Dictionary - Archive Request" in the email subject line.

LOWER\_LAYER\_SUPER\_OUTPUT\_AREA (RESIDENCE) (RETIRED) renamed from LOWER\_LAYER\_SUPER\_OUTPUT\_AREA (RESIDENCE)

Change to Data Element: Changed status to Retired, Name, Description

- Retired LOWER\_LAYER\_SUPER\_OUTPUT\_AREA (RESIDENCE)
- Changed Name from Data\_Dictionary.Data\_Field\_Notes.L.Li.LOWER\_LAYER\_SUPER\_OUTPUT\_AREA\_(RESIDENCE) to Retired.Data\_Dictionary.Data\_Field\_Notes.L.LOWER\_LAYER\_SUPER\_OUTPUT\_AREA\_(RESIDENCE)
- Changed Description

ORGANISATION\_CODE (NHS HEALTH CHECK PROVIDER) (RETIRED) renamed from ORGANISATION\_CODE (NHS HEALTH CHECK PROVIDER)

Change to Data Element: Changed linked Attribute, status to Retired, Name, Description

Format/Length:	max-an6
National Codes:	
Default Codes:	PXXXXX – Pharmacy OXXXXX – Other

**Notes:**

ORGANISATION\_CODE (NHS HEALTH CHECK PROVIDER) is the same as attribute ORGANISATION\_CODE.

ORGANISATION\_CODE (NHS HEALTH CHECK PROVIDER) is the ORGANISATION\_CODE that identifies the Organisation providing the NHS Health Check Assessment. This item has been retired from the NHS Data Model and Dictionary.

The last live version of this item is available in the March 2019 release of the NHS Data Model and Dictionary.

Access to this version can be obtained by emailing [information.standards@nhs.net](mailto:information.standards@nhs.net) with "NHS Data Model and Dictionary - Archive Request" in the email subject line.

ORGANISATION\_CODE (NHS HEALTH CHECK PROVIDER) (RETIRED) renamed from ORGANISATION\_CODE (NHS HEALTH CHECK PROVIDER)

Change to Data Element: Changed linked Attribute, status to Retired, Name, Description

**ORGANISATION\_CODE (NHS HEALTH CHECK PROVIDER)**

**Attribute:**

<u>ORGANISATION_CODE</u>
--------------------------

ORGANISATION\_CODE (NHS HEALTH CHECK PROVIDER) (RETIRED) renamed from ORGANISATION\_CODE (NHS HEALTH CHECK PROVIDER)

Change to Data Element: Changed linked Attribute, status to Retired, Name, Description

- null
- Retired ORGANISATION\_CODE (NHS HEALTH CHECK PROVIDER)
- Changed Name from Data\_Dictionary.Data\_Field\_Notes.O.Org.ORGANISATION\_CODE\_(NHS\_HEALTH\_CHECK\_PROVIDER) to Retired.Data\_Dictionary.Data\_Field\_Notes.O.ORGANISATION\_CODE\_(NHS\_HEALTH\_CHECK\_PROVIDER)
- Changed Description

PATIENT\_DIAGNOSIS\_INDICATOR (CHRONIC KIDNEY DISEASE STAGE 3) (RETIRED) renamed from PATIENT\_DIAGNOSIS\_INDICATOR (CHRONIC KIDNEY DISEASE STAGE 3)

Change to Data Element: Changed linked Attribute, status to Retired, Name, Description

Format/Length:	an4
National Codes:	See <u>PATIENT_DIAGNOSIS_INDICATOR</u>

Default Codes:

**Notes:**

[PATIENT DIAGNOSIS INDICATOR \(CHRONIC KIDNEY DISEASE STAGE 3\)](#) is the same as attribute [PATIENT DIAGNOSIS INDICATOR](#).

For the [NHS Health Checks Data Set](#), this is an indication of whether a [PATIENT DIAGNOSIS](#), where the [PATIENT DIAGNOSIS TYPE FOR NHS HEALTH CHECK](#) is National Code 'Chronic Kidney Disease Stage 3', is made as a result of an [NHS Health Check Assessment](#). This item has been retired from the NHS Data Model and Dictionary.

The last live version of this item is available in the March 2019 release of the NHS Data Model and Dictionary.

Access to this version can be obtained by emailing [information.standards@nhs.net](mailto:information.standards@nhs.net) with "NHS Data Model and Dictionary - Archive Request" in the email subject line.

---

PATIENT DIAGNOSIS INDICATOR (CHRONIC KIDNEY DISEASE STAGE 3) (RETIRED)\_ renamed from PATIENT DIAGNOSIS INDICATOR (CHRONIC KIDNEY DISEASE STAGE 3)

Change to Data Element: Changed linked Attribute, status to Retired, Name, Description

**PATIENT DIAGNOSIS INDICATOR (CHRONIC KIDNEY DISEASE STAGE 3)**

**Attribute:**

[PATIENT DIAGNOSIS INDICATOR](#)

---

PATIENT DIAGNOSIS INDICATOR (CHRONIC KIDNEY DISEASE STAGE 3) (RETIRED)\_ renamed from PATIENT DIAGNOSIS INDICATOR (CHRONIC KIDNEY DISEASE STAGE 3)

Change to Data Element: Changed linked Attribute, status to Retired, Name, Description

- null
- Retired PATIENT DIAGNOSIS INDICATOR (CHRONIC KIDNEY DISEASE STAGE 3)
- Changed Name from Data\_Dictionary.Data\_Field\_Notes.P.Pat.PATIENT\_DIAGNOSIS\_INDICATOR\_(CHRONIC\_KIDNEY\_DISEASE\_STAGE\_3) to Retired.Data\_Dictionary.Data\_Field\_Notes.P.PATIENT\_DIAGNOSIS\_INDICATOR\_(CHRONIC\_KIDNEY\_DISEASE\_STAGE\_3)
- Changed Description

---

PATIENT DIAGNOSIS INDICATOR (CHRONIC KIDNEY DISEASE STAGE 4) (RETIRED)\_ renamed from PATIENT DIAGNOSIS INDICATOR (CHRONIC KIDNEY DISEASE STAGE 4)

Change to Data Element: Changed linked Attribute, status to Retired, Name, Description

Format/Length:	an4
National Codes:	See <a href="#">PATIENT DIAGNOSIS INDICATOR</a>
Default Codes:	

**Notes:**

[PATIENT DIAGNOSIS INDICATOR \(CHRONIC KIDNEY DISEASE STAGE 4\)](#) is the same as attribute [PATIENT DIAGNOSIS INDICATOR](#).

For the [NHS Health Checks Data Set](#), this is an indication of whether a [PATIENT DIAGNOSIS](#), where the [PATIENT DIAGNOSIS TYPE FOR NHS HEALTH CHECK](#) is National Code 'Chronic Kidney Disease Stage 4', is made as a result of an [NHS Health Check Assessment](#). This item has been retired from the NHS Data Model and Dictionary.

The last live version of this item is available in the March 2019 release of the NHS Data Model and Dictionary.

Access to this version can be obtained by emailing [information.standards@nhs.net](mailto:information.standards@nhs.net) with "NHS Data Model and Dictionary - Archive Request" in the email subject line.

---

PATIENT DIAGNOSIS INDICATOR (CHRONIC KIDNEY DISEASE STAGE 4) (RETIRED)\_ renamed from PATIENT DIAGNOSIS INDICATOR (CHRONIC KIDNEY DISEASE STAGE 4)

Change to Data Element: Changed linked Attribute, status to Retired, Name, Description

**PATIENT DIAGNOSIS INDICATOR (CHRONIC KIDNEY DISEASE STAGE 4)**

**Attribute:**

[PATIENT DIAGNOSIS INDICATOR](#)

---

PATIENT DIAGNOSIS INDICATOR (CHRONIC KIDNEY DISEASE STAGE 4) (RETIRED)\_ renamed from PATIENT DIAGNOSIS INDICATOR (CHRONIC KIDNEY DISEASE STAGE 4)

Change to Data Element: Changed linked Attribute, status to Retired, Name, Description

- null
- Retired PATIENT DIAGNOSIS INDICATOR (CHRONIC KIDNEY DISEASE STAGE 4)

- Changed Name from Data\_Dictionary.Data\_Field\_Notes.P.Pat.PATIENT\_DIAGNOSIS\_INDICATOR\_(CHRONIC\_KIDNEY\_DISEASE\_STAGE\_4) to Retired.Data\_Dictionary.Data\_Field\_Notes.P.PATIENT\_DIAGNOSIS\_INDICATOR\_(CHRONIC\_KIDNEY\_DISEASE\_STAGE\_4)
- Changed Description

**PATIENT DIAGNOSIS INDICATOR (CHRONIC KIDNEY DISEASE STAGE 5) (RETIRED)**\_renamed from **PATIENT DIAGNOSIS INDICATOR (CHRONIC KIDNEY DISEASE STAGE 5)**

Change to Data Element: Changed linked Attribute, status to Retired, Name, Description

Format/Length:	an1
National Codes:	See <a href="#">PATIENT DIAGNOSIS INDICATOR</a>
Default Codes:	

**Notes:**

[PATIENT DIAGNOSIS INDICATOR \(CHRONIC KIDNEY DISEASE STAGE 5\)](#) is the same as attribute [PATIENT DIAGNOSIS INDICATOR](#).

For the [NHS Health Checks Data Set](#) this is an indication of whether a [PATIENT DIAGNOSIS](#), where the [PATIENT DIAGNOSIS TYPE FOR NHS HEALTH CHECK](#) is National Code '*Chronic Kidney Disease Stage 5*', is made as a result of an [NHS Health Check Assessment](#). **This item has been retired from the NHS Data Model and Dictionary.**

**The last live version of this item is available in the March 2019 release of the NHS Data Model and Dictionary.**

**Access to this version can be obtained by emailing [information.standards@nhs.net](mailto:information.standards@nhs.net) with "NHS Data Model and Dictionary - Archive Request" in the email subject line.**

**PATIENT DIAGNOSIS INDICATOR (CHRONIC KIDNEY DISEASE STAGE 5) (RETIRED)**\_renamed from **PATIENT DIAGNOSIS INDICATOR (CHRONIC KIDNEY DISEASE STAGE 5)**

Change to Data Element: Changed linked Attribute, status to Retired, Name, Description

**[PATIENT DIAGNOSIS INDICATOR \(CHRONIC KIDNEY DISEASE STAGE 5\)](#)**

**Attributes:**

<a href="#">PATIENT DIAGNOSIS INDICATOR</a>
---

**PATIENT DIAGNOSIS INDICATOR (CHRONIC KIDNEY DISEASE STAGE 5) (RETIRED)**\_renamed from **PATIENT DIAGNOSIS INDICATOR (CHRONIC KIDNEY DISEASE STAGE 5)**

Change to Data Element: Changed linked Attribute, status to Retired, Name, Description

- null
- Retired PATIENT DIAGNOSIS INDICATOR (CHRONIC KIDNEY DISEASE STAGE 5)
- Changed Name from Data\_Dictionary.Data\_Field\_Notes.P.Pat.PATIENT\_DIAGNOSIS\_INDICATOR\_(CHRONIC\_KIDNEY\_DISEASE\_STAGE\_5) to Retired.Data\_Dictionary.Data\_Field\_Notes.P.PATIENT\_DIAGNOSIS\_INDICATOR\_(CHRONIC\_KIDNEY\_DISEASE\_STAGE\_5)
- Changed Description

**PATIENT DIAGNOSIS INDICATOR (HYPERTENSION) (RETIRED)**\_renamed from **PATIENT DIAGNOSIS INDICATOR (HYPERTENSION)**

Change to Data Element: Changed linked Attribute, status to Retired, Name, Description

Format/Length:	an1
National Codes:	See <a href="#">PATIENT DIAGNOSIS INDICATOR</a>
Default Codes:	

**Notes:**

[PATIENT DIAGNOSIS INDICATOR \(HYPERTENSION\)](#) is the same as attribute [PATIENT DIAGNOSIS INDICATOR](#). **This item has been retired from the NHS Data Model and Dictionary.**

For the [NHS Health Checks Data Set](#) this is an indication of whether a [PATIENT DIAGNOSIS](#), where the [PATIENT DIAGNOSIS TYPE FOR NHS HEALTH CHECK](#) is National Code '*Hypertension*', is made as a result of an [NHS Health Check Assessment](#). **The last live version of this item is available in the March 2019 release of the NHS Data Model and Dictionary.**

**Access to this version can be obtained by emailing [information.standards@nhs.net](mailto:information.standards@nhs.net) with "NHS Data Model and Dictionary - Archive Request" in the email subject line.**

**PATIENT DIAGNOSIS INDICATOR (HYPERTENSION) (RETIRED)**\_renamed from **PATIENT DIAGNOSIS INDICATOR (HYPERTENSION)**

Change to Data Element: Changed linked Attribute, status to Retired, Name, Description

**[PATIENT DIAGNOSIS INDICATOR \(HYPERTENSION\)](#)**

**Attributes:**

[PATIENT DIAGNOSIS INDICATOR](#)

**PATIENT DIAGNOSIS INDICATOR (HYPERTENSION) (RETIRED)** renamed from **PATIENT DIAGNOSIS INDICATOR (HYPERTENSION)**

Change to Data Element: Changed linked Attribute, status to Retired, Name, Description

- null
- Retired PATIENT DIAGNOSIS INDICATOR (HYPERTENSION)
- Changed Name from Data\_Dictionary.Data\_Field\_Notes.P.Pat.PATIENT\_DIAGNOSIS\_INDICATOR\_(HYPERTENSION) to Retired.Data\_Dictionary.Data\_Field\_Notes.P.PATIENT\_DIAGNOSIS\_INDICATOR\_(HYPERTENSION)
- Changed Description

**PATIENT DIAGNOSIS INDICATOR (NON DIABETIC HYPERGLYCAEMIA) (RETIRED)** renamed from **PATIENT DIAGNOSIS INDICATOR (NON DIABETIC HYPERGLYCAEMIA)**

Change to Data Element: Changed linked Attribute, status to Retired, Name, Description

Format/Length:	an4
National Codes:	See <a href="#">PATIENT DIAGNOSIS INDICATOR</a>
Default Codes:	

**Notes:**

[PATIENT DIAGNOSIS INDICATOR \(NON DIABETIC HYPERGLYCAEMIA\)](#) is the same as attribute [PATIENT DIAGNOSIS INDICATOR](#). This item has been retired from the NHS Data Model and Dictionary.

For the [NHS Health Checks Data Set](#) this is an indication of whether a [PATIENT DIAGNOSIS](#), where the [PATIENT DIAGNOSIS TYPE FOR NHS HEALTH CHECK](#) is National Code 'Non-Diabetic-Hyperglycaemia', is made as a result of an [NHS Health Check Assessment](#). The last live version of this item is available in the March 2019 release of the NHS Data Model and Dictionary.

Access to this version can be obtained by emailing [information.standards@nhs.net](mailto:information.standards@nhs.net) with "NHS Data Model and Dictionary - Archive Request" in the email subject line.

**PATIENT DIAGNOSIS INDICATOR (NON DIABETIC HYPERGLYCAEMIA) (RETIRED)** renamed from **PATIENT DIAGNOSIS INDICATOR (NON DIABETIC HYPERGLYCAEMIA)**

Change to Data Element: Changed linked Attribute, status to Retired, Name, Description

**[PATIENT DIAGNOSIS INDICATOR \(NON DIABETIC HYPERGLYCAEMIA\)](#)**

**Attribute:**

[PATIENT DIAGNOSIS INDICATOR](#)

**PATIENT DIAGNOSIS INDICATOR (NON DIABETIC HYPERGLYCAEMIA) (RETIRED)** renamed from **PATIENT DIAGNOSIS INDICATOR (NON DIABETIC HYPERGLYCAEMIA)**

Change to Data Element: Changed linked Attribute, status to Retired, Name, Description

- null
- Retired PATIENT DIAGNOSIS INDICATOR (NON DIABETIC HYPERGLYCAEMIA)
- Changed Name from Data\_Dictionary.Data\_Field\_Notes.P.Pat.PATIENT\_DIAGNOSIS\_INDICATOR\_(NON DIABETIC HYPERGLYCAEMIA) to Retired.Data\_Dictionary.Data\_Field\_Notes.P.PATIENT\_DIAGNOSIS\_INDICATOR\_(NON DIABETIC HYPERGLYCAEMIA)
- Changed Description

**PATIENT DIAGNOSIS INDICATOR (TYPE 2 DIABETES) (RETIRED)** renamed from **PATIENT DIAGNOSIS INDICATOR (TYPE 2 DIABETES)**

Change to Data Element: Changed linked Attribute, status to Retired, Name, Description

Format/Length:	an4
National Codes:	See <a href="#">PATIENT DIAGNOSIS INDICATOR</a>
Default Codes:	

**Notes:**

[PATIENT DIAGNOSIS INDICATOR \(TYPE 2 DIABETES\)](#) is the same as attribute [PATIENT DIAGNOSIS INDICATOR](#). This item has been retired from the NHS Data Model and Dictionary.

For the [NHS Health Checks Data Set](#) this is an indication of whether a [PATIENT DIAGNOSIS](#), where the [PATIENT DIAGNOSIS TYPE FOR NHS HEALTH CHECK](#) is National Code 'Type 2 Diabetes', is made as a result of an [NHS Health Check Assessment](#). The last live version of this item is available in the March 2019 release of the NHS Data Model and Dictionary.

Access to this version can be obtained by emailing [information.standards@nhs.net](mailto:information.standards@nhs.net) with "NHS Data Model and Dictionary - Archive Request" in the email subject line.



**PATIENT DIAGNOSIS INDICATOR (TYPE 2 DIABETES) (RETIRED)** renamed from **PATIENT DIAGNOSIS INDICATOR (TYPE 2 DIABETES)**

Change to Data Element: Changed linked Attribute, status to Retired, Name, Description

**PATIENT DIAGNOSIS INDICATOR (TYPE 2 DIABETES)**

Attribute:

[PATIENT DIAGNOSIS INDICATOR](#)

**PATIENT DIAGNOSIS INDICATOR (TYPE 2 DIABETES) (RETIRED)** renamed from **PATIENT DIAGNOSIS INDICATOR (TYPE 2 DIABETES)**

Change to Data Element: Changed linked Attribute, status to Retired, Name, Description

- null
- Retired PATIENT DIAGNOSIS INDICATOR (TYPE 2 DIABETES)
- Changed Name from Data\_Dictionary.Data\_Field\_Notes.P.Pat.PATIENT\_DIAGNOSIS\_INDICATOR\_(TYPE\_2\_DIABETES) to Retired.Data\_Dictionary.Data\_Field\_Notes.P.PATIENT\_DIAGNOSIS\_INDICATOR\_(TYPE\_2\_DIABETES)
- Changed Description

**PHYSICAL ACTIVITY LEVEL (RETIRED)** renamed from **PHYSICAL ACTIVITY LEVEL**

Change to Data Element: Changed linked Attribute, status to Retired, Name, Description

Format/Length: an1  
National Codes: See [PHYSICAL ACTIVITY LEVEL](#)  
Default Codes:

Notes:

[PHYSICAL ACTIVITY LEVEL](#) is the same as attribute [PHYSICAL ACTIVITY LEVEL](#). This item has been retired from the NHS Data Model and Dictionary.

The last live version of this item is available in the March 2019 release of the NHS Data Model and Dictionary.

Access to this version can be obtained by emailing [information.standards@nhs.net](mailto:information.standards@nhs.net) with "NHS Data Model and Dictionary - Archive Request" in the email subject line.

**PHYSICAL ACTIVITY LEVEL (RETIRED)** renamed from **PHYSICAL ACTIVITY LEVEL**

Change to Data Element: Changed linked Attribute, status to Retired, Name, Description

**PHYSICAL ACTIVITY LEVEL**

Attribute:

[PHYSICAL ACTIVITY LEVEL](#)

**PHYSICAL ACTIVITY LEVEL (RETIRED)** renamed from **PHYSICAL ACTIVITY LEVEL**

Change to Data Element: Changed linked Attribute, status to Retired, Name, Description

- null
- Retired PHYSICAL ACTIVITY LEVEL
- Changed Name from Data\_Dictionary.Data\_Field\_Notes.P.Ph.PHYSICAL\_ACTIVITY\_LEVEL to Retired.Data\_Dictionary.Data\_Field\_Notes.P.PHYSICAL\_ACTIVITY\_LEVEL
- Changed Description

**PRESCRIPTION PROVIDED INDICATOR (ANTI-HYPERTENSIVES) (RETIRED)** renamed from **PRESCRIPTION PROVIDED INDICATOR (ANTI-HYPERTENSIVES)**

Change to Data Element: Changed linked Attribute, status to Retired, Name, Description

Format/Length: an1  
National Codes: See [PRESCRIPTION PROVIDED INDICATOR](#)  
Default Codes:

Notes:

[PRESCRIPTION PROVIDED INDICATOR \(ANTI-HYPERTENSIVES\)](#) is the same as attribute [PRESCRIPTION PROVIDED INDICATOR](#).

For the [NHS Health Checks Data Set](#) this is an indication of whether a [PATIENT](#) was provided with a [PRESCRIPTION](#), where the [PRESCRIPTION TYPE PROVIDED FOR NHS HEALTH CHECK](#) is National Code 'Anti Hypertensives', as a result of an [NHS Health Check Assessment](#). This item has been retired from the NHS Data Model and Dictionary.

The last live version of this item is available in the March 2019 release of the NHS Data Model and Dictionary.

Access to this version can be obtained by emailing [information.standards@nhs.net](mailto:information.standards@nhs.net) with "NHS Data Model and Dictionary - Archive Request" in the email subject line.

**PRESCRIPTION PROVIDED INDICATOR (ANTI-HYPERTENSIVES) (RETIRED)\_ renamed from PRESCRIPTION PROVIDED INDICATOR (ANTI-HYPERTENSIVES)**

Change to Data Element: Changed linked Attribute, status to Retired, Name, Description

**PRESCRIPTION PROVIDED INDICATOR (ANTI-HYPERTENSIVES)**

Attribute:

[PRESCRIPTION PROVIDED INDICATOR](#)

**PRESCRIPTION PROVIDED INDICATOR (ANTI-HYPERTENSIVES) (RETIRED)\_ renamed from PRESCRIPTION PROVIDED INDICATOR (ANTI-HYPERTENSIVES)**

Change to Data Element: Changed linked Attribute, status to Retired, Name, Description

- null
- Retired PRESCRIPTION PROVIDED INDICATOR (ANTI-HYPERTENSIVES)
- Changed Name from Data\_Dictionary.Data\_Field\_Notes.P.Pres.PRESCRIPTION\_PROVIDED\_INDICATOR\_(ANTI-HYPERTENSIVES) to Retired.Data\_Dictionary.Data\_Field\_Notes.P.PRESCRIPTION\_PROVIDED\_INDICATOR\_(ANTI-HYPERTENSIVES)
- Changed Description

**PRESCRIPTION PROVIDED INDICATOR (STATINS) (RETIRED)\_ renamed from PRESCRIPTION PROVIDED INDICATOR (STATINS)**

Change to Data Element: Changed linked Attribute, status to Retired, Name, Description

Format/Length:	an1
National Codes:	See <a href="#">PRESCRIPTION PROVIDED INDICATOR</a>
Default Codes:	

**Notes:**

[PRESCRIPTION PROVIDED INDICATOR \(STATINS\)](#) is the same as attribute [PRESCRIPTION PROVIDED INDICATOR](#).

For the [NHS Health Checks Data Set](#) this is an indication of whether a [PATIENT](#) was provided with a [PRESCRIPTION](#), where the [PRESCRIPTION TYPE PROVIDED FOR NHS HEALTH CHECK](#) is National Code 'Statins', as a result of an [NHS Health Check Assessment](#). **This item has been retired from the NHS Data Model and Dictionary.**

**The last live version of this item is available in the March 2019 release of the NHS Data Model and Dictionary.**

**Access to this version can be obtained by emailing [information.standards@nhs.net](mailto:information.standards@nhs.net) with "NHS Data Model and Dictionary - Archive Request" in the email subject line.**

**PRESCRIPTION PROVIDED INDICATOR (STATINS) (RETIRED)\_ renamed from PRESCRIPTION PROVIDED INDICATOR (STATINS)**

Change to Data Element: Changed linked Attribute, status to Retired, Name, Description

**PRESCRIPTION PROVIDED INDICATOR (STATINS)**

Attribute:

[PRESCRIPTION PROVIDED INDICATOR](#)

**PRESCRIPTION PROVIDED INDICATOR (STATINS) (RETIRED)\_ renamed from PRESCRIPTION PROVIDED INDICATOR (STATINS)**

Change to Data Element: Changed linked Attribute, status to Retired, Name, Description

- null
- Retired PRESCRIPTION PROVIDED INDICATOR (STATINS)
- Changed Name from Data\_Dictionary.Data\_Field\_Notes.P.Pres.PRESCRIPTION\_PROVIDED\_INDICATOR\_(STATINS) to Retired.Data\_Dictionary.Data\_Field\_Notes.P.PRESCRIPTION\_PROVIDED\_INDICATOR\_(STATINS)
- Changed Description

**REFERRAL TO SERVICE ACCEPTANCE INDICATOR (PHYSICAL ACTIVITY SERVICE) (RETIRED)\_ renamed from REFERRAL TO SERVICE ACCEPTANCE INDICATOR (PHYSICAL ACTIVITY SERVICE)**

Change to Data Element: Changed linked Attribute, status to Retired, Name, Description

Format/Length:	an1
National Codes:	See <a href="#">REFERRAL REQUEST ACCEPTANCE INDICATOR</a>
Default Codes:	

**Notes:**

[REFERRAL TO SERVICE ACCEPTANCE INDICATOR \(PHYSICAL ACTIVITY SERVICE\)](#) is the same as attribute [REFERRAL REQUEST ACCEPTANCE INDICATOR](#). **This item has been retired from the NHS Data Model and Dictionary.**

An indication of whether a [PERSON](#) accepted or declined a [REFERRAL REQUEST](#) at an [NHS Health Check Assessment](#) where the [REFERRAL REQUEST SERVICE TYPE FOR NHS HEALTH CHECK](#) is National Code 'Physical Activity Service'. The last live version of this item is available in the March 2019 release of the NHS Data Model and Dictionary.

Access to this version can be obtained by emailing [information.standards@nhs.net](mailto:information.standards@nhs.net) with "NHS Data Model and Dictionary - Archive Request" in the email subject line.

---

**REFERRAL TO SERVICE ACCEPTANCE INDICATOR (PHYSICAL ACTIVITY SERVICE) (RETIRED)**\_ renamed from REFERRAL TO SERVICE ACCEPTANCE INDICATOR (PHYSICAL ACTIVITY SERVICE)

---

Change to Data Element: Changed linked Attribute, status to Retired, Name, Description

### **REFERRAL TO SERVICE ACCEPTANCE INDICATOR (PHYSICAL ACTIVITY SERVICE)**

**Attributes**

[REFERRAL REQUEST ACCEPTANCE INDICATOR](#)

---

**REFERRAL TO SERVICE ACCEPTANCE INDICATOR (PHYSICAL ACTIVITY SERVICE) (RETIRED)**\_ renamed from REFERRAL TO SERVICE ACCEPTANCE INDICATOR (PHYSICAL ACTIVITY SERVICE)

---

Change to Data Element: Changed linked Attribute, status to Retired, Name, Description

- null
- Retired REFERRAL TO SERVICE ACCEPTANCE INDICATOR (PHYSICAL ACTIVITY SERVICE)
- Changed Name from Data\_Dictionary.Data\_Field\_Notes.R.Ref.REFERRAL\_TO\_SERVICE\_ACCEPTANCE\_INDICATOR\_(PHYSICAL\_ACTIVITY\_SERVICE) to Retired.Data\_Dictionary.Data\_Field\_Notes.R.REFERRAL\_TO\_SERVICE\_ACCEPTANCE\_INDICATOR\_(PHYSICAL\_ACTIVITY\_SERVICE)
- Changed Description

---

**REFERRAL TO SERVICE ACCEPTANCE INDICATOR (STOP SMOKING SERVICE) (RETIRED)**\_ renamed from REFERRAL TO SERVICE ACCEPTANCE INDICATOR (STOP SMOKING SERVICE)

---

Change to Data Element: Changed linked Attribute, status to Retired, Name, Description

Format/Length:	an4
National Codes:	See <a href="#">REFERRAL REQUEST ACCEPTANCE INDICATOR</a>
Default Codes:	

**Notes**

~~[REFERRAL TO SERVICE ACCEPTANCE INDICATOR \(STOP SMOKING SERVICE\)](#) is the same as attribute [REFERRAL REQUEST ACCEPTANCE INDICATOR](#). This item has been retired from the NHS Data Model and Dictionary.~~

An indication of whether a [PERSON](#) accepted or declined a [REFERRAL REQUEST](#) at an [NHS Health Check Assessment](#) where the [REFERRAL REQUEST SERVICE TYPE FOR NHS HEALTH CHECK](#) is National Code 'Stop Smoking Service'. The last live version of this item is available in the March 2019 release of the NHS Data Model and Dictionary.

Access to this version can be obtained by emailing [information.standards@nhs.net](mailto:information.standards@nhs.net) with "NHS Data Model and Dictionary - Archive Request" in the email subject line.

---

**REFERRAL TO SERVICE ACCEPTANCE INDICATOR (STOP SMOKING SERVICE) (RETIRED)**\_ renamed from REFERRAL TO SERVICE ACCEPTANCE INDICATOR (STOP SMOKING SERVICE)

---

Change to Data Element: Changed linked Attribute, status to Retired, Name, Description

### **REFERRAL TO SERVICE ACCEPTANCE INDICATOR (STOP SMOKING SERVICE)**

**Attributes**

[REFERRAL REQUEST ACCEPTANCE INDICATOR](#)

---

**REFERRAL TO SERVICE ACCEPTANCE INDICATOR (STOP SMOKING SERVICE) (RETIRED)**\_ renamed from REFERRAL TO SERVICE ACCEPTANCE INDICATOR (STOP SMOKING SERVICE)

---

Change to Data Element: Changed linked Attribute, status to Retired, Name, Description

- null
- Retired REFERRAL TO SERVICE ACCEPTANCE INDICATOR (STOP SMOKING SERVICE)
- Changed Name from Data\_Dictionary.Data\_Field\_Notes.R.Ref.REFERRAL\_TO\_SERVICE\_ACCEPTANCE\_INDICATOR\_(STOP\_SMOKING\_SERVICE) to Retired.Data\_Dictionary.Data\_Field\_Notes.R.REFERRAL\_TO\_SERVICE\_ACCEPTANCE\_INDICATOR\_(STOP\_SMOKING\_SERVICE)
- Changed Description

---

**REFERRAL TO SERVICE ACCEPTANCE INDICATOR (WEIGHT MANAGEMENT SERVICE) (RETIRED)**\_ renamed from REFERRAL TO SERVICE ACCEPTANCE INDICATOR (WEIGHT MANAGEMENT SERVICE)

---

Change to Data Element: Changed linked Attribute, status to Retired, Name, Description

Format/Length:	an4
National Codes:	See <a href="#">REFERRAL REQUEST ACCEPTANCE INDICATOR</a>
Default Codes:	

**Notes:**

~~[REFERRAL TO SERVICE ACCEPTANCE INDICATOR \(WEIGHT MANAGEMENT SERVICE\)](#) is the same as attribute [REFERRAL REQUEST ACCEPTANCE INDICATOR](#). This item has been retired from the NHS Data Model and Dictionary.~~

An indication of whether a [PERSON](#) accepted or declined a [REFERRAL REQUEST](#) at an [NHS Health Check Assessment](#) where the [REFERRAL REQUEST SERVICE TYPE FOR NHS HEALTH CHECK](#) is National Code 'Weight Management Service'. The last live version of this item is available in the March 2019 release of the NHS Data Model and Dictionary.

Access to this version can be obtained by emailing [information.standards@nhs.net](mailto:information.standards@nhs.net) with "NHS Data Model and Dictionary - Archive Request" in the email subject line.

---

REFERRAL TO SERVICE ACCEPTANCE INDICATOR (WEIGHT MANAGEMENT SERVICE) (RETIRED)\_ renamed from REFERRAL TO SERVICE ACCEPTANCE INDICATOR (WEIGHT MANAGEMENT SERVICE)

Change to Data Element: Changed linked Attribute, status to Retired, Name, Description

**REFERRAL TO SERVICE ACCEPTANCE INDICATOR (WEIGHT MANAGEMENT SERVICE)**

**Attributes:**

<a href="#">REFERRAL REQUEST ACCEPTANCE INDICATOR</a>
---

---

REFERRAL TO SERVICE ACCEPTANCE INDICATOR (WEIGHT MANAGEMENT SERVICE) (RETIRED)\_ renamed from REFERRAL TO SERVICE ACCEPTANCE INDICATOR (WEIGHT MANAGEMENT SERVICE)

Change to Data Element: Changed linked Attribute, status to Retired, Name, Description

- null
- Retired REFERRAL TO SERVICE ACCEPTANCE INDICATOR (WEIGHT MANAGEMENT SERVICE)
- Changed Name from Data\_Dictionary.Data\_Field\_Notes.R.Ref.REFERRAL\_TO\_SERVICE\_ACCEPTANCE\_INDICATOR\_ (WEIGHT\_MANAGEMENT\_SERVICE) to Retired.Data\_Dictionary.Data\_Field\_Notes.R.REFERRAL\_TO\_SERVICE\_ACCEPTANCE\_INDICATOR\_ (WEIGHT\_MANAGEMENT\_SERVICE)
- Changed Description

---

SIGNPOSTING TO SERVICE INDICATOR (PHYSICAL ACTIVITY SERVICE) (RETIRED)\_ renamed from SIGNPOSTING TO SERVICE INDICATOR (PHYSICAL ACTIVITY SERVICE)

Change to Data Element: Changed linked Attribute, status to Retired, Name, Description

Format/Length:	an4
National Codes:	See <a href="#">SIGNPOSTING TO SERVICE INDICATOR</a>
Default Codes:	

**Notes:**

~~[SIGNPOSTING TO SERVICE INDICATOR \(PHYSICAL ACTIVITY SERVICE\)](#) is the same as attribute [SIGNPOSTING TO SERVICE INDICATOR](#).~~

For the [NHS Health Checks Data Set](#) this is an indication of whether [Signposting](#) was provided to a [PATIENT](#), where the [SIGNPOSTING TO SERVICE TYPE FOR NHS HEALTH CHECK](#) is National Code 'Physical Activity Service', during an [NHS Health Check Assessment](#). This item has been retired from the NHS Data Model and Dictionary.

The last live version of this item is available in the March 2019 release of the NHS Data Model and Dictionary.

Access to this version can be obtained by emailing [information.standards@nhs.net](mailto:information.standards@nhs.net) with "NHS Data Model and Dictionary - Archive Request" in the email subject line.

---

SIGNPOSTING TO SERVICE INDICATOR (PHYSICAL ACTIVITY SERVICE) (RETIRED)\_ renamed from SIGNPOSTING TO SERVICE INDICATOR (PHYSICAL ACTIVITY SERVICE)

Change to Data Element: Changed linked Attribute, status to Retired, Name, Description

**SIGNPOSTING TO SERVICE INDICATOR (PHYSICAL ACTIVITY SERVICE)**

**Attributes:**

<a href="#">SIGNPOSTING TO SERVICE INDICATOR</a>
--

**SIGNPOSTING TO SERVICE INDICATOR (PHYSICAL ACTIVITY SERVICE) (RETIRED)\_ renamed from SIGNPOSTING TO SERVICE INDICATOR (PHYSICAL ACTIVITY SERVICE)**

Change to Data Element: Changed linked Attribute, status to Retired, Name, Description

- null
- Retired SIGNPOSTING TO SERVICE INDICATOR (PHYSICAL ACTIVITY SERVICE)
- Changed Name from Data\_Dictionary.Data\_Field\_Notes.S.Set.SIGNPOSTING\_TO\_SERVICE\_INDICATOR\_(PHYSICAL\_ACTIVITY\_SERVICE) to Retired.Data\_Dictionary.Data\_Field\_Notes.S.SIGNPOSTING\_TO\_SERVICE\_INDICATOR\_(PHYSICAL\_ACTIVITY\_SERVICE)
- Changed Description

**SIGNPOSTING TO SERVICE INDICATOR (STOP SMOKING SERVICE) (RETIRED)\_ renamed from SIGNPOSTING TO SERVICE INDICATOR (STOP SMOKING SERVICE)**

Change to Data Element: Changed linked Attribute, status to Retired, Name, Description

Format/Length:	an1
National Codes:	See <a href="#">SIGNPOSTING TO SERVICE INDICATOR</a>
Default Codes:	

**Notes:**

[SIGNPOSTING TO SERVICE INDICATOR \(STOP SMOKING SERVICE\)](#) is the same as attribute [SIGNPOSTING TO SERVICE INDICATOR](#).

For the [NHS Health Checks Data Set](#) this is an indication of whether [Signposting](#) was provided to a [PATIENT](#), where the [SIGNPOSTING TO SERVICE TYPE FOR NHS HEALTH CHECK](#) is National Code 'Stop Smoking Service', during an [NHS Health Check Assessment](#). This item has been retired from the NHS Data Model and Dictionary.

The last live version of this item is available in the March 2019 release of the NHS Data Model and Dictionary.

Access to this version can be obtained by emailing [information.standards@nhs.net](mailto:information.standards@nhs.net) with "NHS Data Model and Dictionary - Archive Request" in the email subject line.

**SIGNPOSTING TO SERVICE INDICATOR (STOP SMOKING SERVICE) (RETIRED)\_ renamed from SIGNPOSTING TO SERVICE INDICATOR (STOP SMOKING SERVICE)**

Change to Data Element: Changed linked Attribute, status to Retired, Name, Description

<b><a href="#">SIGNPOSTING TO SERVICE INDICATOR (STOP SMOKING SERVICE)</a></b>	
Attribute:	<a href="#">SIGNPOSTING TO SERVICE INDICATOR</a>

**SIGNPOSTING TO SERVICE INDICATOR (STOP SMOKING SERVICE) (RETIRED)\_ renamed from SIGNPOSTING TO SERVICE INDICATOR (STOP SMOKING SERVICE)**

Change to Data Element: Changed linked Attribute, status to Retired, Name, Description

- null
- Retired SIGNPOSTING TO SERVICE INDICATOR (STOP SMOKING SERVICE)
- Changed Name from Data\_Dictionary.Data\_Field\_Notes.S.Set.SIGNPOSTING\_TO\_SERVICE\_INDICATOR\_(STOP\_SMOKING\_SERVICE) to Retired.Data\_Dictionary.Data\_Field\_Notes.S.SIGNPOSTING\_TO\_SERVICE\_INDICATOR\_(STOP\_SMOKING\_SERVICE)
- Changed Description

**SIGNPOSTING TO SERVICE INDICATOR (WEIGHT MANAGEMENT SERVICE) (RETIRED)\_ renamed from SIGNPOSTING TO SERVICE INDICATOR (WEIGHT MANAGEMENT SERVICE)**

Change to Data Element: Changed linked Attribute, status to Retired, Name, Description

Format/Length:	an1
National Codes:	See <a href="#">SIGNPOSTING TO SERVICE INDICATOR</a>
Default Codes:	

**Notes:**

[SIGNPOSTING TO SERVICE INDICATOR \(WEIGHT MANAGEMENT SERVICE\)](#) is the same as attribute [SIGNPOSTING TO SERVICE INDICATOR](#).

For the [NHS Health Checks Data Set](#) this is an indication of whether [Signposting](#) was provided to a [PATIENT](#), where the [SIGNPOSTING TO SERVICE TYPE FOR NHS HEALTH CHECK](#) is National Code 'Weight Management Service', during an [NHS Health Check Assessment](#). This item has been retired from the NHS Data Model and Dictionary.

The last live version of this item is available in the March 2019 release of the NHS Data Model and Dictionary.

Access to this version can be obtained by emailing [information.standards@nhs.net](mailto:information.standards@nhs.net) with "NHS Data Model and Dictionary - Archive Request" in the email subject line.

---

**SIGNPOSTING TO SERVICE INDICATOR (WEIGHT MANAGEMENT SERVICE) (RETIRED)**\_renamed from **SIGNPOSTING TO SERVICE INDICATOR (WEIGHT MANAGEMENT SERVICE)**

---

Change to Data Element: Changed linked Attribute, status to Retired, Name, Description

### **SIGNPOSTING TO SERVICE INDICATOR (WEIGHT MANAGEMENT SERVICE)**

**Attribute:**

[SIGNPOSTING TO SERVICE INDICATOR](#)

---

**SIGNPOSTING TO SERVICE INDICATOR (WEIGHT MANAGEMENT SERVICE) (RETIRED)**\_renamed from **SIGNPOSTING TO SERVICE INDICATOR (WEIGHT MANAGEMENT SERVICE)**

---

Change to Data Element: Changed linked Attribute, status to Retired, Name, Description

- null
  - Retired SIGNPOSTING TO SERVICE INDICATOR (WEIGHT MANAGEMENT SERVICE)
  - Changed Name from Data\_Dictionary.Data\_Field\_Notes.S.Set.SIGNPOSTING\_TO\_SERVICE\_INDICATOR\_(WEIGHT\_MANAGEMENT\_SERVICE) to Retired.Data\_Dictionary.Data\_Field\_Notes.S.SIGNPOSTING\_TO\_SERVICE\_INDICATOR\_(WEIGHT\_MANAGEMENT\_SERVICE)
  - Changed Description
- 

### **SMOKING STATUS CODE**

Change to Data Element: Changed Description

Format/Length:	an1
National Codes:	See <a href="#">SMOKING STATUS</a>
Default Codes:	9 - Unknown (Not Recorded)

---

**Notes:**

[SMOKING STATUS CODE](#) is the same as attribute [SMOKING STATUS](#).

Code '9 - Unknown' is not a valid code in the [NHS Health Checks Data Set](#).

---

**TOTAL CHOLESTEROL HIGH DENSITY LIPOPROTEIN RATIO (RETIRED)**\_renamed from **TOTAL CHOLESTEROL HIGH DENSITY LIPOPROTEIN RATIO**

---

Change to Data Element: Changed status to Retired, Name, Description

Format/Length:	max n2.n4
National Codes:	
Default Codes:	

---

**Notes:**

[TOTAL CHOLESTEROL HIGH DENSITY LIPOPROTEIN RATIO](#) is the result of the [Clinical Investigation](#) which measures the [PATIENT](#)'s total cholesterol high density lipoprotein ratio.

This value is calculated by dividing the total cholesterol value by the value of the High Density Lipoprotein cholesterol. **This item has been retired from the NHS Data Model and Dictionary.**

**The last live version of this item is available in the March 2019 release of the NHS Data Model and Dictionary.**

**Access to this version can be obtained by emailing [information.standards@nhs.net](mailto:information.standards@nhs.net) with "NHS Data Model and Dictionary - Archive Request" in the email subject line.**

---

**TOTAL CHOLESTEROL HIGH DENSITY LIPOPROTEIN RATIO (RETIRED)**\_renamed from **TOTAL CHOLESTEROL HIGH DENSITY LIPOPROTEIN RATIO**

---

Change to Data Element: Changed status to Retired, Name, Description

- Retired TOTAL CHOLESTEROL HIGH DENSITY LIPOPROTEIN RATIO
  - Changed Name from Data\_Dictionary.Data\_Field\_Notes.T.To.TOTAL\_CHOLESTEROL\_HIGH\_DENSITY\_LIPOPROTEIN\_RATIO to Retired.Data\_Dictionary.Data\_Field\_Notes.T.TOTAL\_CHOLESTEROL\_HIGH\_DENSITY\_LIPOPROTEIN\_RATIO
  - Changed Description
- 

**TOTAL CHOLESTEROL LEVEL (RETIRED)**\_renamed from **TOTAL CHOLESTEROL LEVEL**

---

Change to Data Element: Changed status to Retired, Name, Description

Format/Length:	max n2.n4
National Codes:	
Default Codes:	

---

**Notes:**

**TOTAL CHOLESTEROL LEVEL** is the result of the [Clinical Investigation](#) which measures the [PATIENT](#)'s total Cholesterol Level. **This item has been retired from the NHS Data Model and Dictionary.**

**The last live version of this item is available in the March 2019 release of the NHS Data Model and Dictionary.**

**Access to this version can be obtained by emailing [information.standards@nhs.net](mailto:information.standards@nhs.net) with "NHS Data Model and Dictionary - Archive Request" in the email subject line.**

**TOTAL CHOLESTEROL LEVEL (RETIRED)** renamed from **TOTAL CHOLESTEROL LEVEL**

Change to Data Element: Changed status to Retired, Name, Description

- Retired **TOTAL CHOLESTEROL LEVEL**
- Changed Name from `Data_Dictionary.Data_Field_Notes.T.To.TOTAL_CHOLESTEROL_LEVEL` to `Retired.Data_Dictionary.Data_Field_Notes.T.TOTAL_CHOLESTEROL_LEVEL`
- Changed Description

**NHS HEALTH CHECKS DATA SET XML SCHEMA CONSTRAINTS (RETIRED)** renamed from **NHS HEALTH CHECKS DATA SET XML SCHEMA CONSTRAINTS**

Change to XML Schema Constraint: Changed status to Retired, Name, Description

**XML Schema constraints applied to the [NHS Health Checks Data Set](#). This item has been retired from the NHS Data Model and Dictionary.**

The "Allowed Values" column indicates the NHS Data Model and Dictionary National Codes and Default Codes present in the XML Schema: **The last live version of this item is available in the March 2019 release of the NHS Data Model and Dictionary.**

- None** = The National Codes and Default Codes are included in the XML Schema
- Removed** = The National Codes and Default Codes are not included in the XML Schema.

Data Element	XML Schema Format/Length	Allowed Values	Range	Pattern Match	Reason / Comment / XML Choice
<a href="#">AGE AT ATTENDANCE DATE</a>	n3	Removed  Access to this version can be obtained by emailing <a href="mailto:information.standards@nhs.net">information.standards@nhs.net</a> with "NHS Data Model and Dictionary - Archive Request" in the email subject line.	None	None	Default Code 000 not applicable—removed
<a href="#">ETHNIC CATEGORY</a>	max an2	None	None	None	Existing Format/Length means fixed length which is incorrect. Unable to change this as it is used in other data sets. Second character can be for local use. Format/Length amended to max an2.
<a href="#">LOWER LAYER SUPER OUTPUT AREA (RESIDENCE)</a>	an0	Removed	None	None	Existing Format/Length annnnnnnnn—XML Schema format an0
<a href="#">ORGANISATION CODE (CODE OF COMMISSIONER)</a>	min an3 max an12	Removed	None	None	Field size extended to future proof for <a href="#">ODS ORGANISATION CODE</a> changes
<a href="#">ORGANISATION CODE (NHS HEALTH CHECK PROVIDER)</a>	min an3 max an12	Removed	None	None	Field size extended to future proof for <a href="#">ODS ORGANISATION CODE</a> changes
<a href="#">SMOKING STATUS CODE</a>	an1	1,2,3,4,Z	None	None	Default Code 0 not applicable—removed

**NHS HEALTH CHECKS DATA SET XML SCHEMA CONSTRAINTS (RETIRED)** renamed from **NHS HEALTH CHECKS DATA SET XML SCHEMA CONSTRAINTS**

Change to XML Schema Constraint: Changed status to Retired, Name, Description

- Retired **NHS Health Checks Data Set XML Schema Constraints**
- Changed Name from `Data_Dictionary.Messages.Message_Documentation.XML_Schema_Constraints.NHS_Health_Checks_Data_Set_XML_Schema_Constrain` to `Retired.Data_Dictionary.Messages.Message_Documentation.NHS_Health_Checks_Data_Set_XML_Schema_Constraints`
- Changed Description

For enquiries about this Change Request, please email [information.standards@nhs.net](mailto:information.standards@nhs.net)

