

## Health and Social Care Information Centre

### NHS Data Model and Dictionary Service

<b>Type:</b>	Data Dictionary Change Notice
<b>Reference:</b>	1464
<b>Version No:</b>	1.0
<b>Subject:</b>	Retirement of Standards - Domains and Diagrams
<b>Effective Date:</b>	Immediate
<b>Reason for Change:</b>	Retirement of Data Standards
<b>Publication Date:</b>	24 March 2014

### Background:

The Information Standards Board for Health and Social Care (ISB) has conducted a review of all Data Set Change Notices (DSCNs) and Information Standards Notices (ISNs) issued since 1987, to update its portfolio of standards prior to the handover of responsibility to NHS England, the Health and Social Care Information Centre (HSCIC) and Public Health England.

This review has identified a number of data standards in the NHS Data Model and Dictionary which have been superseded or are no longer in use.

A number of Data Dictionary Change Notices (DDCN) have retired items in the NHS Data Model and Dictionary in line with the Data Set Change Notices, as listed on the ISB [Advanced Notification - Withdrawal](#) issued 26/09/13.

This Data Dictionary Change Notice updates the following items in the NHS Data Model and Dictionary:

- Updates and retires diagrams following the retirement of a number of Classes
- Updates and retires domains to be consistent with NHS Data Model and Dictionary Editorial Policy.

To view a demonstration on "How to Read an NHS Data Model and Dictionary Change Request", visit the NHS Data Model and Dictionary help pages at: [http://www.datadictionary.nhs.uk/Flash\\_Files/changerequest.htm](http://www.datadictionary.nhs.uk/Flash_Files/changerequest.htm).

Note: if the web page does not open, please copy the link and paste into the web browser.

### Summary of changes:

#### **Diagrams**

<a href="#">ACTIVITY DIAGRAM</a>	Changed Diagram
<a href="#">ADDRESS DIAGRAM</a> renamed from <a href="#">ADDRESS GEOGRAPHICAL AREA AND COMMUNICATION DIAGRAM</a>	Changed Diagram
<a href="#">APPOINTMENT DIAGRAM</a> renamed from <a href="#">APPOINTMENTS DIAGRAM</a>	Changed Diagram
<a href="#">CARE PROFESSIONAL DIAGRAM</a>	Changed Diagram
<a href="#">COMMUNITY INFORMATION DIAGRAM</a> renamed from <a href="#">COMMUNITY DIAGRAM</a>	Changed Diagram
<a href="#">ORGANISATION DIAGRAM</a>	Changed Diagram
<a href="#">PATIENT PATHWAY DIAGRAM</a>	Changed Diagram
<a href="#">PERSON DIAGRAM</a> renamed from <a href="#">PERSON AND PERSON PROPERTY DIAGRAM</a>	Changed Diagram
<a href="#">PRESCRIBING AND DISPENSING DIAGRAM</a>	Changed Diagram
<a href="#">RADIOTHERAPY DIAGRAM</a>	Changed Diagram
<a href="#">SERVICE REQUEST DIAGRAM</a> renamed from <a href="#">REFERRAL REQUEST DIAGRAM</a>	Changed Diagram

#### **Supporting Information**

<a href="#">ACTIVITY DIAGRAM OVERVIEW</a>	Changed Description
---	---------------------

<a href="#">ADDRESS DIAGRAM OVERVIEW</a> renamed from <a href="#">ADDRESS GEOGRAPHICAL AREA AND COMMUNICATION DIAGRAM OVERVIEW</a>	Changed Description, Name
<a href="#">APPOINTMENT DIAGRAM OVERVIEW</a> renamed from <a href="#">APPOINTMENTS DIAGRAM OVERVIEW</a>	Changed Description, Name
<a href="#">CARE PROFESSIONAL DIAGRAM OVERVIEW</a>	Changed Description
<a href="#">CATEGORY VALUED PERSON OBSERVATION DIAGRAM OVERVIEW (RETIRED)</a> renamed from <a href="#">CATEGORY VALUED PERSON OBSERVATION DIAGRAM OVERVIEW</a>	Changed Description, status to Retired, Name
<a href="#">COMMUNITY INFORMATION DIAGRAM OVERVIEW</a> renamed from <a href="#">COMMUNITY DIAGRAM OVERVIEW</a>	Changed Name
<a href="#">DIAGRAMS MENU</a>	Changed Description
<a href="#">HEALTH PROGRAMME DIAGRAM OVERVIEW (RETIRED)</a> renamed from <a href="#">HEALTH PROGRAMME DIAGRAM OVERVIEW</a>	Changed Description, status to Retired, Name
<a href="#">LISTS DIAGRAM OVERVIEW (RETIRED)</a> renamed from <a href="#">LISTS DIAGRAM OVERVIEW</a>	Changed Description, status to Retired, Name
<a href="#">PATIENT PATHWAY DIAGRAM OVERVIEW</a>	Changed Description
<a href="#">PERSON DIAGRAM OVERVIEW</a> renamed from <a href="#">PERSON AND PERSON PROPERTY DIAGRAM OVERVIEW</a>	Changed Description, Name
<a href="#">SERVICE REQUEST DIAGRAM OVERVIEW</a> renamed from <a href="#">REFERRAL REQUEST DIAGRAM OVERVIEW</a>	Changed Description, Name

### **Domain Definitions**

<a href="#">A AND E ARRIVAL MODE (RETIRED)</a> renamed from <a href="#">A AND E ARRIVAL MODE</a>	Changed Description, status to Retired, Name
<a href="#">ALPHANUMERIC</a> renamed from <a href="#">ALPHA NUMERIC</a>	Changed Description, Name
<a href="#">ALPHA NUMERIC 3 (RETIRED)</a> renamed from <a href="#">ALPHA NUMERIC 3</a>	Changed Description, status to Retired, Name
<a href="#">ALPHA NUMERIC 35 (RETIRED)</a> renamed from <a href="#">ALPHA NUMERIC 35</a>	Changed Description, status to Retired, Name
<a href="#">ALPHA NUMERIC 4 (RETIRED)</a> renamed from <a href="#">ALPHA NUMERIC 4</a>	Changed Description, status to Retired, Name
<a href="#">ALPHA NUMERIC 40 (RETIRED)</a> renamed from <a href="#">ALPHA NUMERIC 40</a>	Changed Description, status to Retired, Name
<a href="#">ALPHA NUMERIC 5 (RETIRED)</a> renamed from <a href="#">ALPHA NUMERIC 5</a>	Changed Description, status to Retired, Name
<a href="#">ALPHA NUMERIC 7 (RETIRED)</a> renamed from <a href="#">ALPHA NUMERIC 7</a>	Changed Description, status to Retired, Name
<a href="#">ALPHA NUMERIC 70 (RETIRED)</a> renamed from <a href="#">ALPHA NUMERIC 70</a>	Changed Description, status to Retired, Name
<a href="#">ALPHA NUMERIC 80 (RETIRED)</a> renamed from <a href="#">ALPHA NUMERIC 80</a>	Changed Description, status to Retired, Name
<a href="#">ALPHA NUMERIC UNKNOWN (RETIRED)</a> renamed from <a href="#">ALPHA NUMERIC UNKNOWN</a>	Changed Description, status to Retired, Name
<a href="#">CHARACTER (RETIRED)</a> renamed from <a href="#">CHARACTER</a>	Changed Description, status to Retired, Name
<a href="#">CHARACTER 15 (RETIRED)</a> renamed from <a href="#">CHARACTER 15</a>	Changed Description, status to Retired, Name
<a href="#">CHARACTER 35 (RETIRED)</a> renamed from <a href="#">CHARACTER 35</a>	Changed Description, status to Retired, Name
<a href="#">CHARACTER 5 (RETIRED)</a> renamed from <a href="#">CHARACTER 5</a>	Changed Description, status to Retired, Name
<a href="#">CHARACTER 8 (RETIRED)</a> renamed from <a href="#">CHARACTER 8</a>	Changed Description, status to Retired, Name
<a href="#">CHARACTER UNKNOWN (RETIRED)</a> renamed from <a href="#">CHARACTER UNKNOWN</a>	Changed Description, status to Retired, Name
<a href="#">CLASSIFICATION</a>	Changed Description
<a href="#">CLASSIFICATION UNSPECIFIED (RETIRED)</a> renamed from <a href="#">CLASSIFICATION UNSPECIFIED</a>	Changed Description, status to Retired, Name
<a href="#">DATE</a> renamed from <a href="#">DATE E-GIF</a>	Changed Description, Name
<a href="#">DATE AND TIME</a> renamed from <a href="#">DATE AND TIME E-GIF</a>	Changed Description, Name
<a href="#">DELIVERY PLACE TYPE (RETIRED)</a> renamed from <a href="#">DELIVERY PLACE TYPE</a>	Changed Description, status to Retired, Name

<a href="#"><u>FLAG 1 (RETIRED)</u></a> renamed from <a href="#"><u>FLAG 1</u></a>	Changed Description, status to Retired, Name
<a href="#"><u>IDENTIFIER (RETIRED)</u></a> renamed from <a href="#"><u>IDENTIFIER</u></a>	Changed Description, status to Retired, Name
<a href="#"><u>IDENTIFIER ALPHA NUMERIC 10 (RETIRED)</u></a> renamed from <a href="#"><u>IDENTIFIER ALPHA NUMERIC 10</u></a>	Changed Description, status to Retired, Name
<a href="#"><u>IDENTIFIER ALPHA NUMERIC 12 (RETIRED)</u></a> renamed from <a href="#"><u>IDENTIFIER ALPHA NUMERIC 12</u></a>	Changed Description, status to Retired, Name
<a href="#"><u>IDENTIFIER ALPHA NUMERIC 5 (RETIRED)</u></a> renamed from <a href="#"><u>IDENTIFIER ALPHA NUMERIC 5</u></a>	Changed Description, status to Retired, Name
<a href="#"><u>IDENTIFIER ALPHA NUMERIC 6 (RETIRED)</u></a> renamed from <a href="#"><u>IDENTIFIER ALPHA NUMERIC 6</u></a>	Changed Description, status to Retired, Name
<a href="#"><u>IDENTIFIER CHARACTER 14 (RETIRED)</u></a> renamed from <a href="#"><u>IDENTIFIER CHARACTER 14</u></a>	Changed Description, status to Retired, Name
<a href="#"><u>IDENTIFIER NUMERIC 3 (RETIRED)</u></a> renamed from <a href="#"><u>IDENTIFIER NUMERIC 3</u></a>	Changed Description, status to Retired, Name
<a href="#"><u>IDENTIFIER UNKNOWN (RETIRED)</u></a> renamed from <a href="#"><u>IDENTIFIER UNKNOWN</u></a>	Changed Description, status to Retired, Name
<a href="#"><u>NATIONAL CODE NUMERIC</u></a>	Changed Description
<a href="#"><u>NUMERIC 1 (RETIRED)</u></a> renamed from <a href="#"><u>NUMERIC 1</u></a>	Changed Description
<a href="#"><u>NUMERIC 1 (RETIRED)</u></a> renamed from <a href="#"><u>NUMERIC 1</u></a>	Changed Description, status to Retired, Name
<a href="#"><u>NUMERIC 2.2 (RETIRED)</u></a> renamed from <a href="#"><u>NUMERIC 2.2</u></a>	Changed Description, status to Retired, Name
<a href="#"><u>NUMERIC 2 (RETIRED)</u></a> renamed from <a href="#"><u>NUMERIC 2</u></a>	Changed Description, status to Retired, Name
<a href="#"><u>NUMERIC 3.2 (RETIRED)</u></a> renamed from <a href="#"><u>NUMERIC 3.2</u></a>	Changed Description, status to Retired, Name
<a href="#"><u>NUMERIC 3 (RETIRED)</u></a> renamed from <a href="#"><u>NUMERIC 3</u></a>	Changed Description, status to Retired, Name
<a href="#"><u>NUMERIC 4.1 (RETIRED)</u></a> renamed from <a href="#"><u>NUMERIC 4.1</u></a>	Changed Description, status to Retired, Name
<a href="#"><u>NUMERIC 4.2 (RETIRED)</u></a> renamed from <a href="#"><u>NUMERIC 4.2</u></a>	Changed Description, status to Retired, Name
<a href="#"><u>NUMERIC 4 (RETIRED)</u></a> renamed from <a href="#"><u>NUMERIC 4</u></a>	Changed Description, status to Retired, Name
<a href="#"><u>NUMERIC UNKNOWN (RETIRED)</u></a> renamed from <a href="#"><u>NUMERIC UNKNOWN</u></a>	Changed Description, status to Retired, Name
<a href="#"><u>PERCENTAGE (RETIRED)</u></a> renamed from <a href="#"><u>PERCENTAGE</u></a>	Changed Description, status to Retired, Name
<a href="#"><u>STERLING (RETIRED)</u></a> renamed from <a href="#"><u>STERLING</u></a>	Changed Description, status to Retired, Name
<a href="#"><u>SYMBOL (RETIRED)</u></a> renamed from <a href="#"><u>SYMBOL</u></a>	Changed Description, status to Retired, Name
<a href="#"><u>TIME</u></a> renamed from <a href="#"><u>TIME E-GIF</u></a>	Changed Description, Name

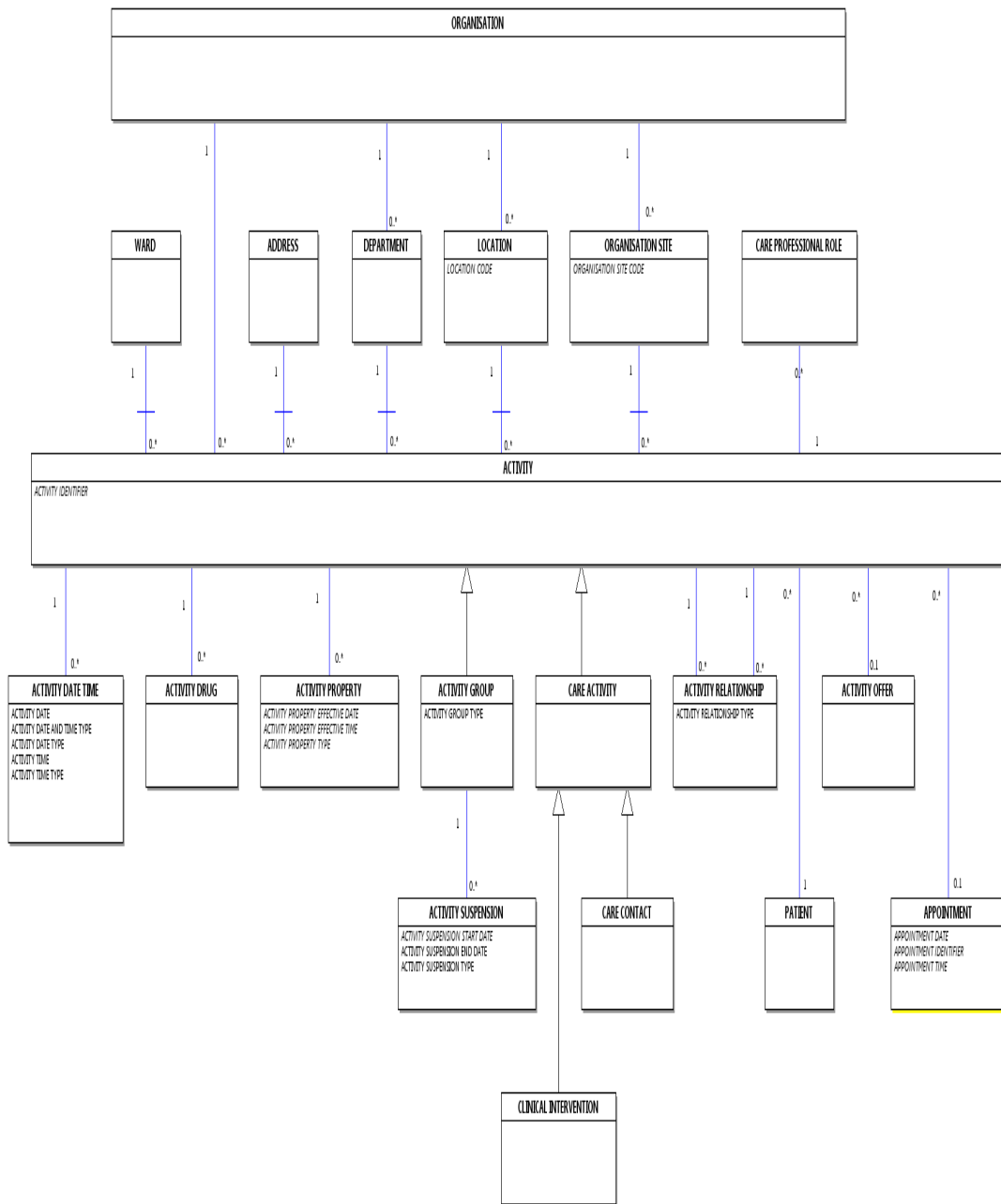
**Date:** 24 March 2014

**Sponsor:** Dr K. Lunn, Director of Information Standards Delivery, Health and Social Care Information Centre

**Note:** New text is shown with a blue background. Deleted text is crossed out. Retired text is shown in grey. Within the Diagrams deleted classes and relationships are red, changed items are blue and new items are green.

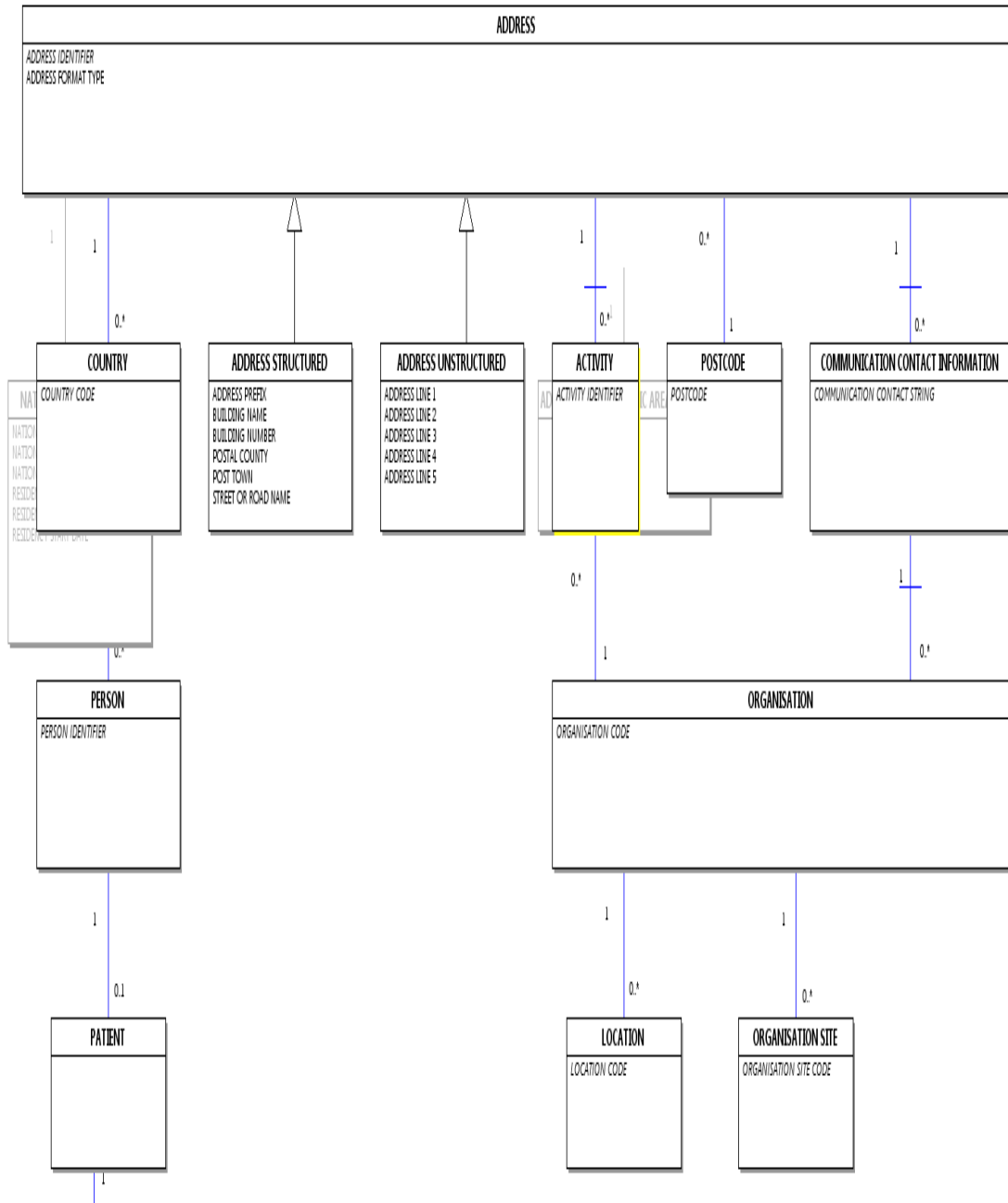
**ACTIVITY DIAGRAM**

Change to Diagram: Changed Diagram



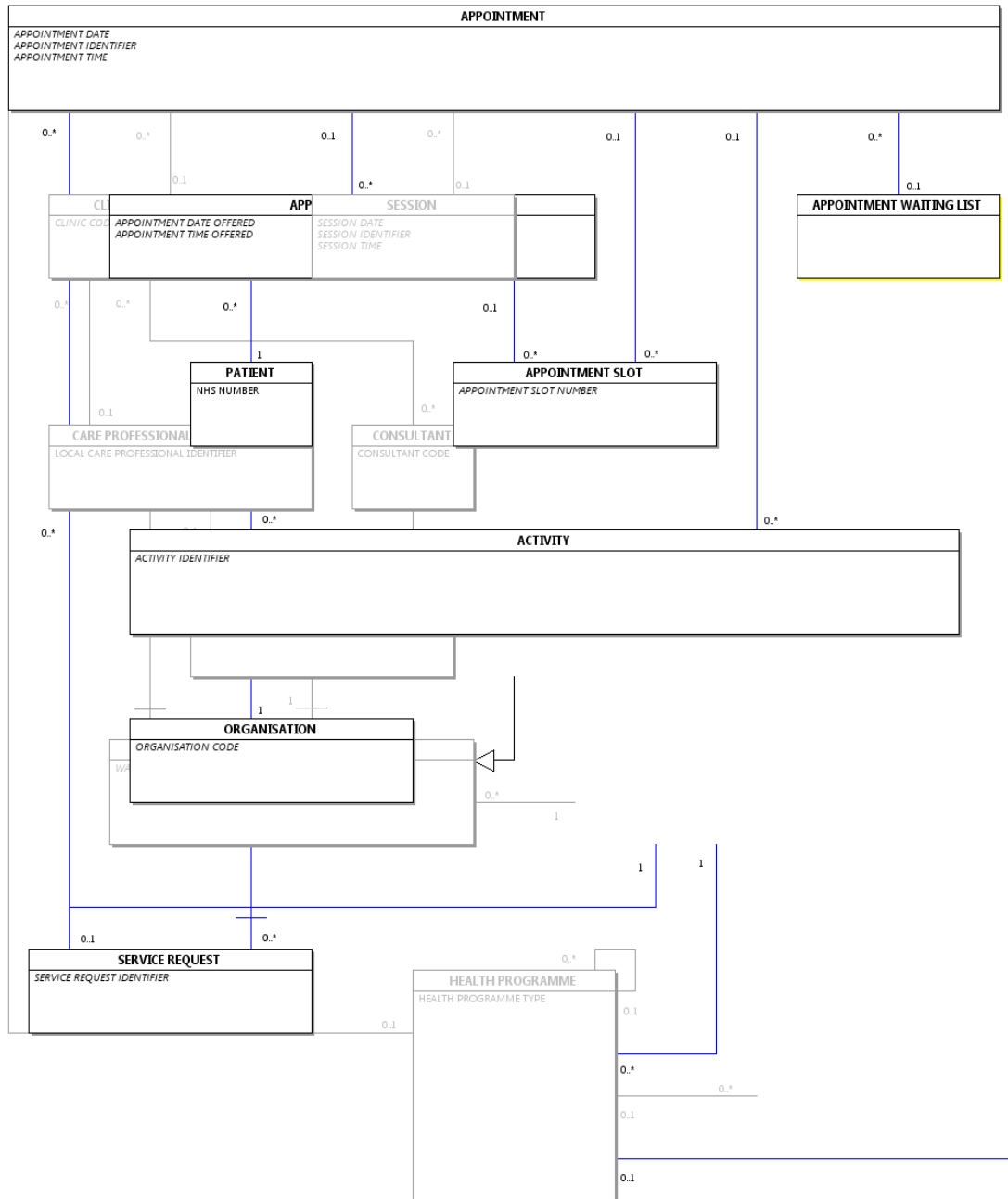
**ADDRESS DIAGRAM** renamed from **ADDRESS GEOGRAPHICAL AREA AND COMMUNICATION DIAGRAM**

Change to Diagram: Changed Diagram



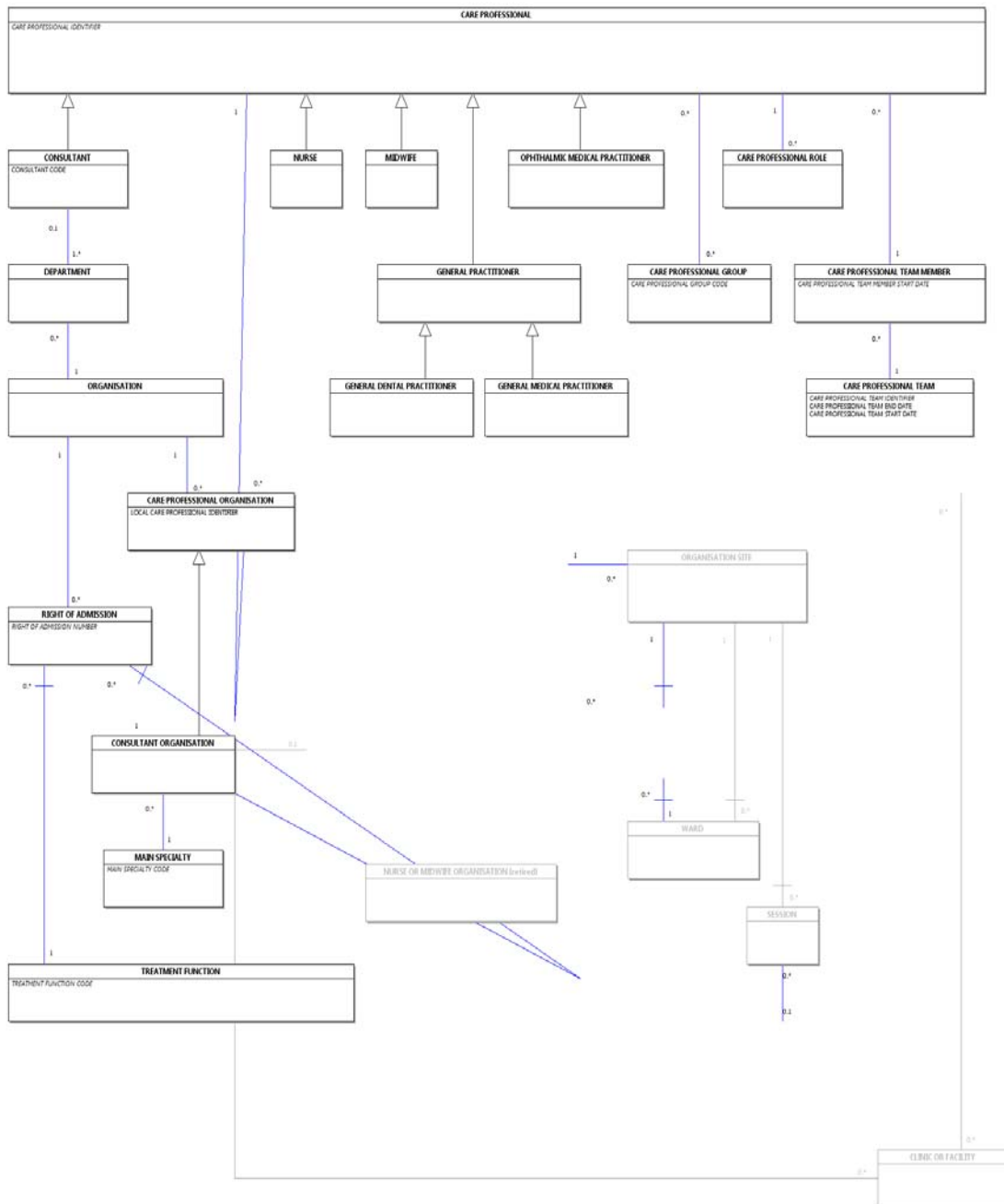
**APPOINTMENT DIAGRAM\_ renamed from APPOINTMENTS DIAGRAM**

Change to Diagram: Changed Diagram



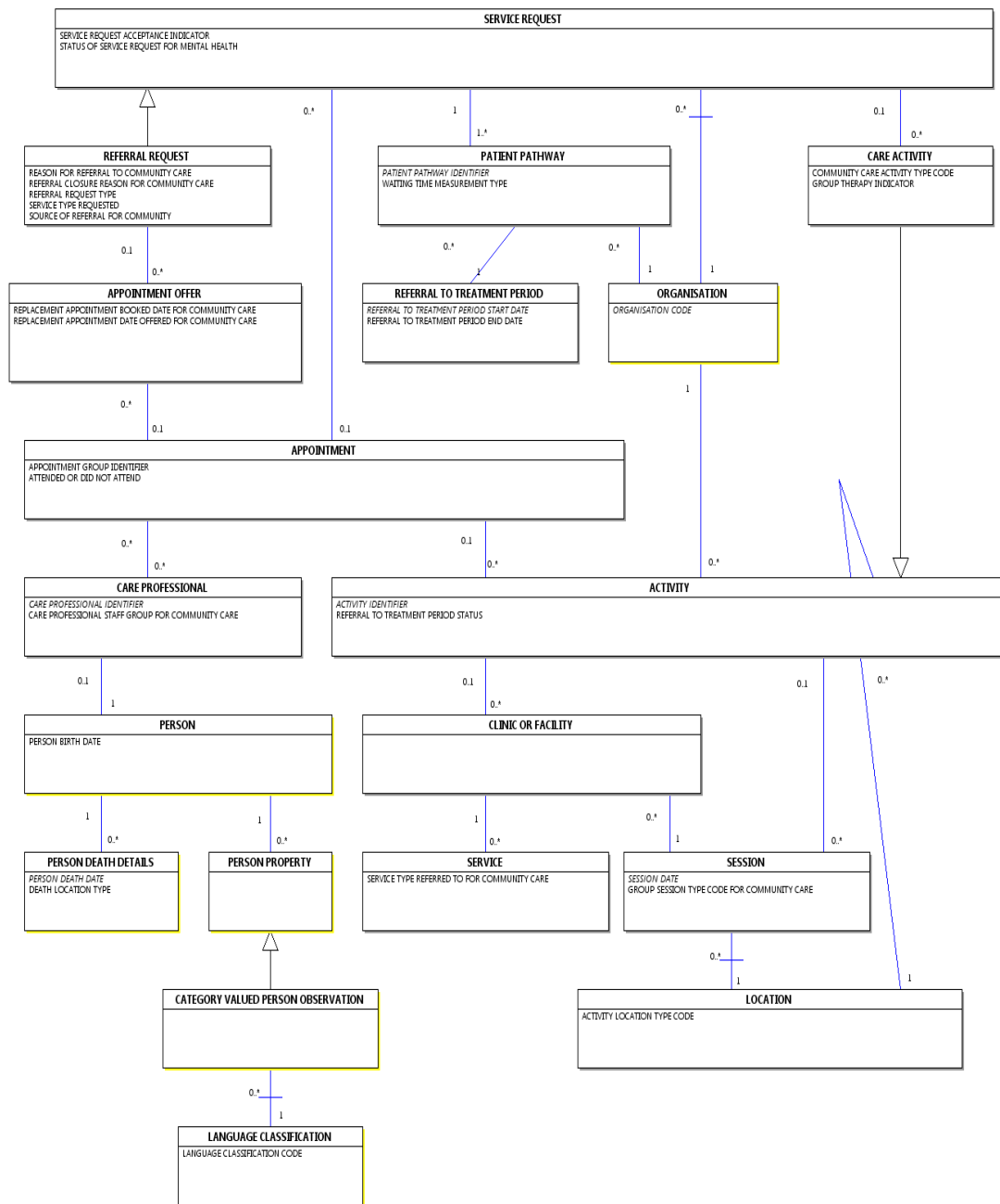
# CARE PROFESSIONAL DIAGRAM

Change to Diagram: Changed Diagram



**COMMUNITY INFORMATION DIAGRAM\_renamed from COMMUNITY DIAGRAM**

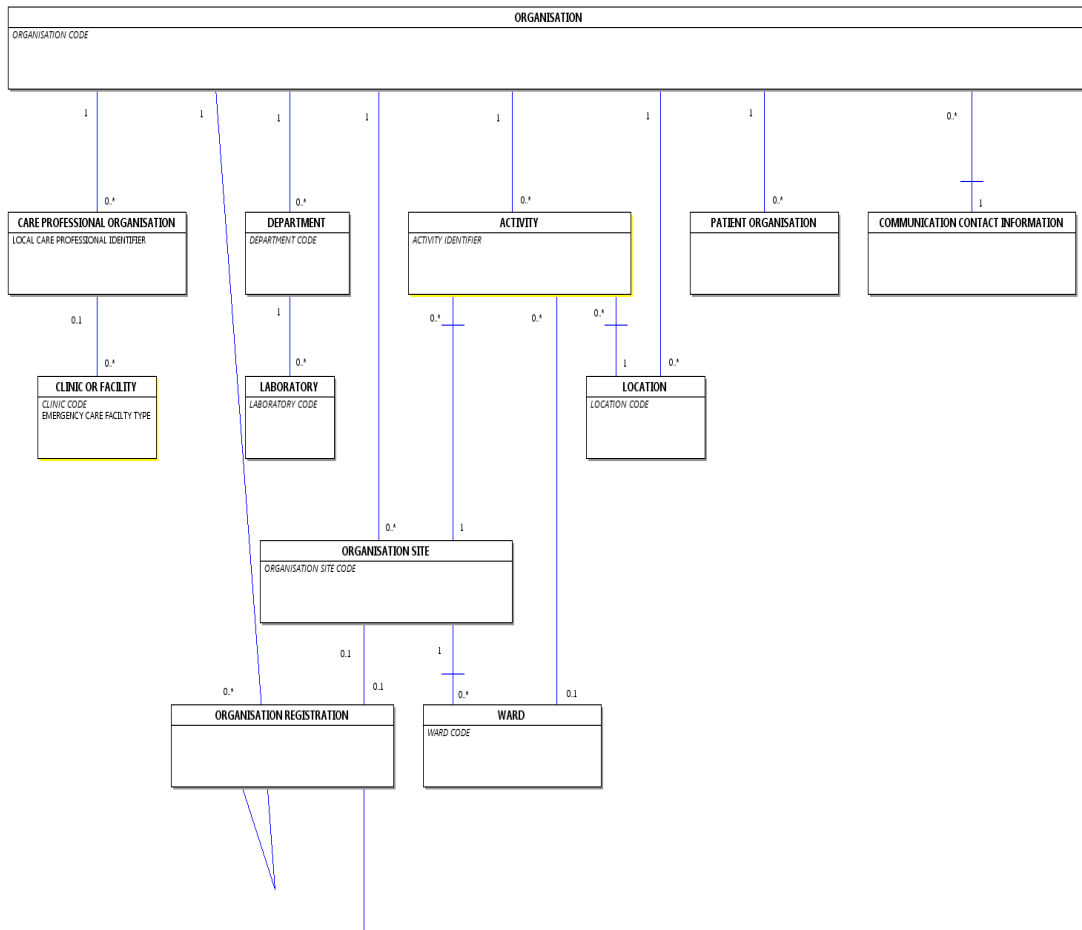
Change to Diagram: Changed Diagram





**ORGANISATION DIAGRAM**

Change to Diagram: Changed Diagram

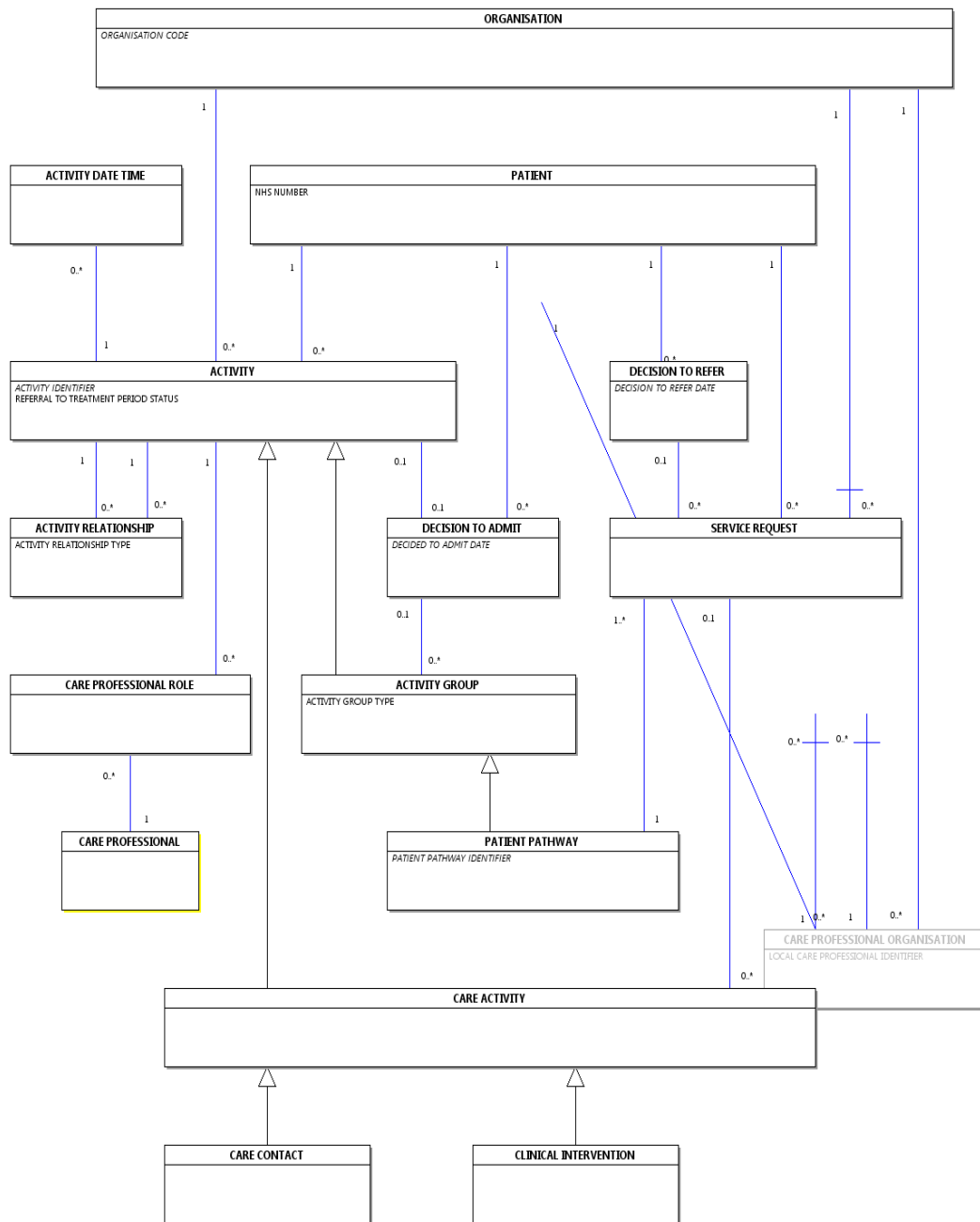


ORGANISATION REGISTRATION SERVICE (retired)

ORGANISATION REGISTRATION USER (retired)

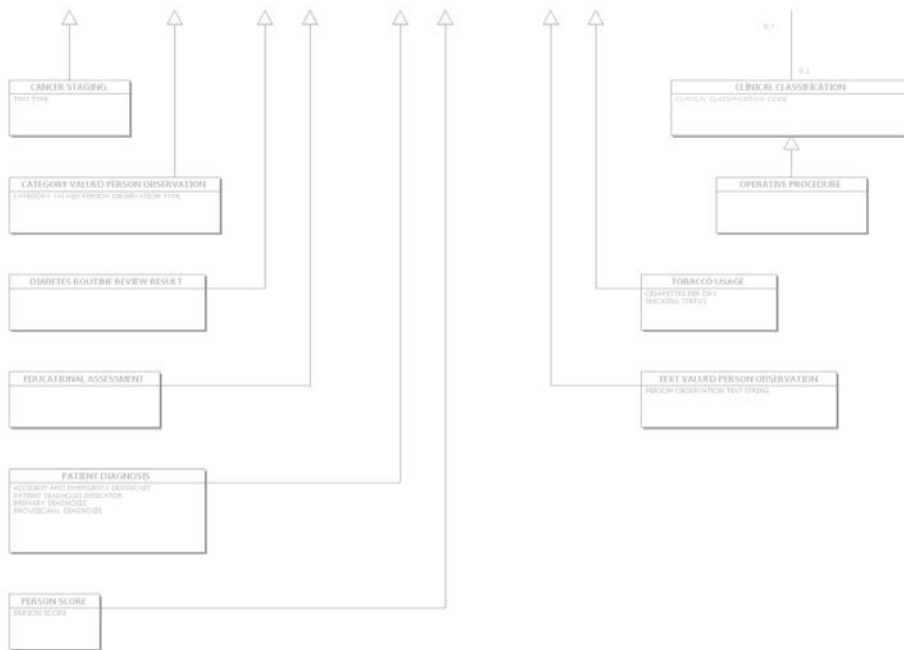
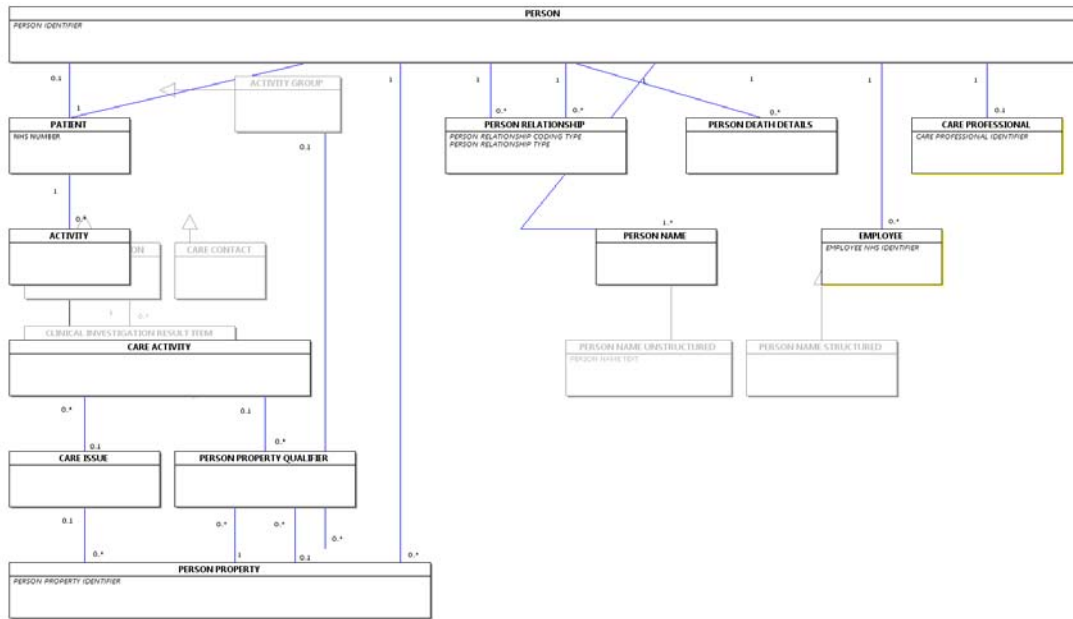
**PATIENT PATHWAY DIAGRAM**

Change to Diagram: Changed Diagram



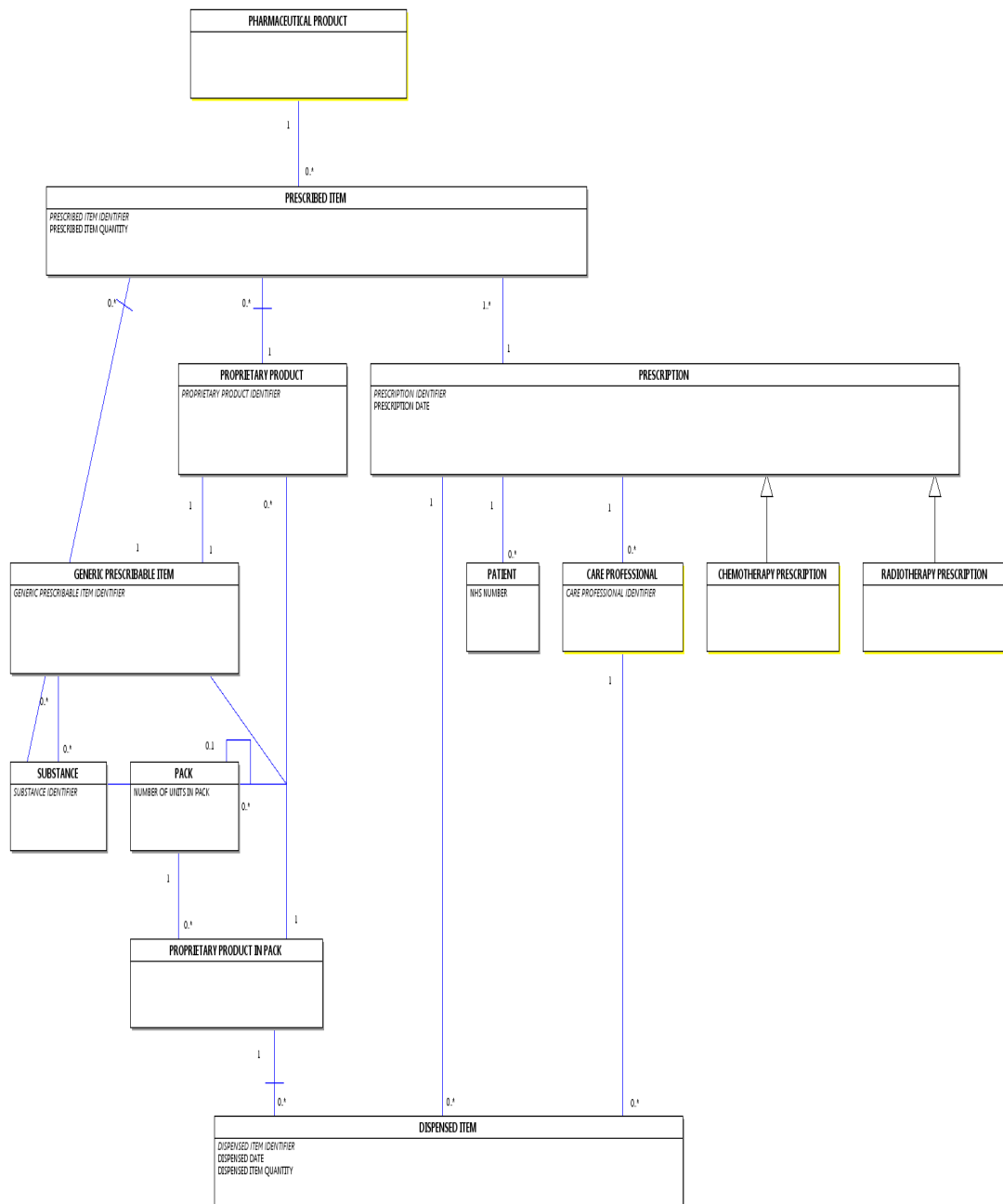
**PERSON DIAGRAM\_renamed from PERSON AND PERSON PROPERTY DIAGRAM**

Change to Diagram: Changed Diagram



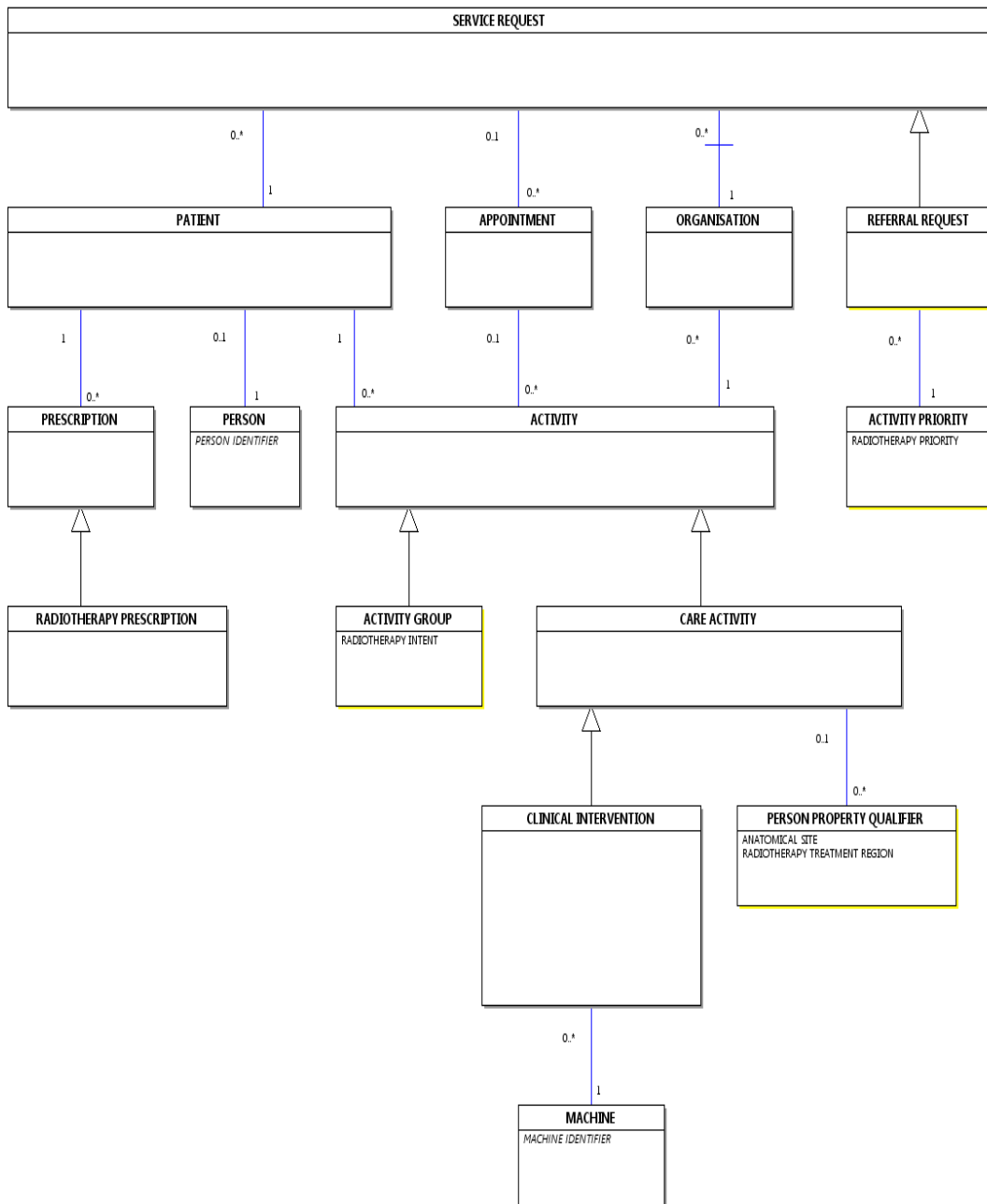
**PRESCRIBING AND DISPENSING DIAGRAM**

Change to Diagram: Changed Diagram



**RADIOTHERAPY DIAGRAM**

Change to Diagram: Changed Diagram





- [Organisation](#)
- [Patient Pathway](#)
- [Organisation](#)

## USING THE DIAGRAM

By clicking on a Class on the diagram opposite, the selected Class definition will be displayed. By clicking on an Attribute name displayed within the Class, the selected Attribute definition will be displayed.

Note that not all attributes for a class will be visible. The full list of attributes for a class can be viewed in the class definition, by selecting the 'Attribute' tab.

To view the diagram in full, select the 'Print Window' option, this will open a new window that will display only the diagram. You can also use this view to print the diagram, by right clicking on the diagram and selecting 'Print Picture'.

---

### ADDRESS DIAGRAM OVERVIEW\_ renamed from ADDRESS GEOGRAPHICAL AREA AND COMMUNICATION DIAGRAM OVERVIEW

---

Change to Supporting Information: Changed Description, Name

The ~~Address Geographical Area and Communication Diagram~~ demonstrates how the classes [ADDRESS](#) and [COMMUNICATION CONTACT INFORMATION](#) may be utilised by a [PERSON](#) or an [ORGANISATION](#). It also shows how [GEOGRAPHIC AREAS](#) relate to [ADDRESSES](#) and [ORGANISATIONS](#). The [Address Diagram](#) demonstrates how the class [ADDRESS](#) may be utilised by a [PERSON](#) or an [ORGANISATION](#).

Related diagrams include:

- [Organisation](#)
- [Person](#)

## USING THE DIAGRAM

By clicking on a Class on the diagram opposite, the selected Class definition will be displayed. By clicking on an Attribute name displayed within the Class, the selected Attribute definition will be displayed.

Note that not all attributes for a class will be visible. The full list of attributes for a class can be viewed in the class definition, by selecting the 'Attribute' tab.

To view the diagram in full, select the 'Print Window' option, this will open a new window that will display only the diagram. You can also use this view to print the diagram, by right clicking on the diagram and selecting 'Print Picture'.

---

### APPOINTMENT DIAGRAM OVERVIEW\_ renamed from APPOINTMENTS DIAGRAM OVERVIEW

---

Change to Supporting Information: Changed Description, Name

The ~~Appointments Diagram~~ demonstrates how the [APPOINTMENT](#) class is related to the delivery of an [ACTIVITY](#). The [Appointment Diagram](#) demonstrates how the [APPOINTMENT](#) class is related to the delivery of an [ACTIVITY](#).

Related diagrams include:

- [Activity](#)
- [Care Professional](#)
- [Health Programme](#)
- [Lists](#)
- [Organisation](#)
- [Patient Pathway](#)

- [Referral Request](#)
- [Service Request](#)

## USING THE DIAGRAM

By clicking on a Class on the diagram opposite, the selected Class definition will be displayed. By clicking on an Attribute name displayed within the Class, the selected Attribute definition will be displayed.

Note that not all attributes for a class will be visible. The full list of attributes for a class can be viewed in the class definition, by selecting the 'Attribute' tab.

To view the diagram in full, select the 'Print Window' option, this will open a new window that will display only the diagram. You can also use this view to print the diagram, by right clicking on the diagram and selecting 'Print Picture'.

## CARE PROFESSIONAL DIAGRAM OVERVIEW

Change to Supporting Information: Changed Description

The [Care Professional Diagram](#) demonstrates how the different types of [CARE PROFESSIONALS](#) are related to the delivery of a [CARE ACTIVITY](#) by an [ORGANISATION](#). The [Care Professional Diagram](#) demonstrates how the different types of [CARE PROFESSIONALS](#) are managed by an [ORGANISATION](#) for the delivery of a [CARE ACTIVITY](#) by an [ORGANISATION](#).

Related diagrams include:

- [Activity](#)
- [Appointments](#)
- [Health Programme](#)
- [Lists](#)
- [Organisation](#)
- [Referral Request](#)
- [Service Request](#)

## USING THE DIAGRAM

By clicking on a Class on the diagram opposite, the selected Class definition will be displayed. By clicking on an Attribute name displayed within the Class, the selected Attribute definition will be displayed.

Note that not all attributes for a class will be visible. The full list of attributes for a class can be viewed in the class definition, by selecting the 'Attribute' tab.

To view the diagram in full, select the 'Print Window' option, this will open a new window that will display only the diagram. You can also use this view to print the diagram, by right clicking on the diagram and selecting 'Print Picture'.

## CATEGORY VALUED PERSON OBSERVATION DIAGRAM OVERVIEW (RETIRED)\_ renamed from CATEGORY VALUED PERSON OBSERVATION DIAGRAM OVERVIEW

Change to Supporting Information: Changed Description, status to Retired, Name

The [Category Valued Person Observation Diagram](#) demonstrates the usage of the subtype [CATEGORY VALUED PERSON OBSERVATION](#), and the set of predetermined values which may be selected to record [CATEGORY VALUED PERSON OBSERVATIONS](#) for a [PERSON](#). **This item has been retired from the NHS Data Model and Dictionary.**

Related diagrams include: **The last live version of this item is available in the February 2014 release of the NHS Data Model and Dictionary.**



- [Activity](#)
- [Person and Person Property](#)

## USING THE DIAGRAM

By clicking on a Class on the diagram opposite, the selected Class definition will be displayed. By clicking on an Attribute name displayed within the Class, the selected Attribute definition will be displayed.

Note that not all attributes for a class will be visible. The full list of attributes for a class can be viewed in the class definition, by selecting the 'Attribute' tab.

To view the diagram in full, select the 'Print Window' option, this will open a new window that will display only the diagram. You can also use this view to print the diagram, by right clicking on the diagram and selecting 'Print Picture'.

**Access to this version can be obtained by emailing [information.standards@hscic.gov.uk](mailto:information.standards@hscic.gov.uk) with "NHS Data Model and Dictionary - Archive Request" in the email subject line.**

---

CATEGORY VALUED PERSON OBSERVATION DIAGRAM OVERVIEW (RETIRED)\_ renamed from CATEGORY VALUED PERSON OBSERVATION DIAGRAM OVERVIEW

**Change to Supporting Information: Changed Description, status to Retired, Name**

- Changed Description
- Retired Category Valued Person Observation Diagram Overview
- Changed **Name** from **Data\_Dictionary.Diagrams.Overviews.Category\_Valued\_Person\_Observation\_Diagram\_Overview** to **Retired.Data\_Dictionary.Diagrams.Category\_Valued\_Person\_Observation\_Diagram\_Overview**

---

COMMUNITY INFORMATION DIAGRAM OVERVIEW\_ renamed from COMMUNITY DIAGRAM OVERVIEW

**Change to Supporting Information: Changed Name**

- Changed **Name** from **Data\_Dictionary.Diagrams.Overviews.Community\_Diagram\_Overview** to **Data\_Dictionary.Diagrams.Overviews.Community\_Information\_Diagram\_Overview**

---

DIAGRAMS MENU

**Change to Supporting Information: Changed Description**

- [Diagrams Introduction](#)
- [Diagramming Conventions](#)
- [Help Menu](#)
- **Generic Diagrams**
- [Activity](#)
- [Address, Geographical Area and Communication](#)
- [Appointments](#)
- [Address](#)
- [Appointment](#)
- [Care Professional](#)
- [Category Valued Person Observation](#)
- [Health Programme](#)
- [Lists](#)
- [Organisation](#)
- [Patient Pathway](#)
- [Person and Person Property](#)

- [Person](#)
  - [Prescribing and Dispensing](#)
  - [Radiotherapy](#)
  - [Referral Request](#)
  - [Service Request](#)
- 
- Data Set Supporting Diagrams
  - [Cancer Outcomes and Services](#)
  - [Child and Adolescent Mental Health](#)
  - [Children and Young Peoples Health](#)
  - [Community](#)
  - [Community](#)
  - [Diagnostic Imaging](#)
  - [HIV and AIDS](#)
  - [Improving Access to Psychological Therapies](#)
  - [Maternity](#)
  - [National Joint Registry](#)
  - [National Renal](#)
  - [Radiotherapy](#)
  - [Systemic Anti-Cancer Therapy](#)

---

HEALTH PROGRAMME DIAGRAM OVERVIEW (RETIRED)\_renamed from HEALTH PROGRAMME DIAGRAM OVERVIEW

---

Change to Supporting Information: Changed Description, status to Retired, Name

The [Health Programme Diagram](#) demonstrates the delivery of a [HEALTH PROGRAMME](#) by an [ORGANISATION](#). This item has been retired from the NHS Data Model and Dictionary.

~~Related diagrams include:~~ The last live version of this item is available in the February 2014 release of the NHS Data Model and Dictionary.

- [Activity](#)
- [Appointments](#)
- [Care Professional](#)
- [Lists](#)

~~USING THE DIAGRAM~~ Access to this version can be obtained by emailing [information.standards@hscic.gov.uk](mailto:information.standards@hscic.gov.uk) with "NHS Data Model and Dictionary - Archive Request" in the email subject line.

~~By clicking on a Class on the diagram opposite, the selected Class definition will be displayed. By clicking on an Attribute name displayed within the Class, the selected Attribute definition will be displayed.~~

~~Note that not all attributes for a class will be visible. The full list of attributes for a class can be viewed in the class definition, by selecting the 'Attribute' tab.~~

~~To view the diagram in full, select the 'Print Window' option, this will open a new window that will display only the diagram. You can also use this view to print the diagram, by right clicking on the diagram and selecting 'Print Picture'.~~

---

HEALTH PROGRAMME DIAGRAM OVERVIEW (RETIRED)\_renamed from HEALTH PROGRAMME DIAGRAM OVERVIEW

---

Change to Supporting Information: Changed Description, status to Retired, Name

- Changed Description
- Retired Health Programme Diagram Overview

- Changed Name from Data\_Dictionary.Diagrams.Overviews.Health\_Programme\_Diagram\_Overview to Retired.Data\_Dictionary.Diagrams.Health\_Programme\_Diagram\_Overview

---

LISTS DIAGRAM OVERVIEW (RETIRED)\_ renamed from LISTS DIAGRAM OVERVIEW

---

Change to Supporting Information: Changed Description, status to Retired, Name

The [Lists Diagram](#) depicts the management of [WAITING LISTS](#) by an [ORGANISATION](#). This includes the subtypes [APPOINTMENT WAITING LISTS](#) and [ELECTIVE ADMISSION LISTS](#) and how they are related to the delivery of an [ACTIVITY](#) for a [PATIENT](#). This item has been retired from the NHS Data Model and Dictionary.

Related diagrams include: The last live version of this item is available in the February 2014 release of the NHS Data Model and Dictionary.

- [Activity](#)
- [Appointments](#)
- [Care Professional](#)
- [Health Programme](#)
- [Organisation](#)
- [Referral Request](#)

USING THE DIAGRAM Access to this version can be obtained by emailing [information.standards@hscic.gov.uk](mailto:information.standards@hscic.gov.uk) with "NHS Data Model and Dictionary - Archive Request" in the email subject line.

By clicking on a Class on the diagram opposite, the selected Class definition will be displayed. By clicking on an Attribute name displayed within the Class, the selected Attribute definition will be displayed.

Note that not all attributes for a class will be visible. The full list of attributes for a class can be viewed in the class definition, by selecting the 'Attribute' tab.

To view the diagram in full, select the 'Print Window' option, this will open a new window that will display only the diagram. You can also use this view to print the diagram, by right clicking on the diagram and selecting 'Print Picture'.

---

LISTS DIAGRAM OVERVIEW (RETIRED)\_ renamed from LISTS DIAGRAM OVERVIEW

---

Change to Supporting Information: Changed Description, status to Retired, Name

- Changed Description
- Retired Lists Diagram Overview
- Changed Name from Data\_Dictionary.Diagrams.Overviews.Lists\_Diagram\_Overview to Retired.Data\_Dictionary.Diagrams.Lists\_Diagram\_Overview

---

PATIENT PATHWAY DIAGRAM OVERVIEW

---

Change to Supporting Information: Changed Description

The [Patient Pathway Diagram](#) demonstrates how the [PATIENT PATHWAY](#) class is related to the delivery of an [ACTIVITY](#) by an [ORGANISATION](#), in order to achieve the 18 week referral to treatment target.

Related diagrams include:

- [Activity](#)
- [Appointments](#)
- [Care Professional](#)

- [Organisation](#)
- [Referral Request](#)
- [Service Request](#)

## USING THE DIAGRAM

By clicking on a Class on the diagram opposite, the selected Class definition will be displayed. By clicking on an Attribute name displayed within the Class, the selected Attribute definition will be displayed.

Note that not all attributes for a class will be visible. The full list of attributes for a class can be viewed in the class definition, by selecting the 'Attribute' tab.

To view the diagram in full, select the 'Print Window' option, this will open a new window that will display only the diagram. You can also use this view to print the diagram, by right clicking on the diagram and selecting 'Print Picture'.

---

PERSON DIAGRAM OVERVIEW\_ renamed from PERSON AND PERSON PROPERTY DIAGRAM OVERVIEW

---

Change to Supporting Information: Changed Description, Name

~~The [Person and Person Property Diagram](#) depicts information which may be recorded for a [PERSON](#). A [PERSON PROPERTY](#) may be recorded as text, selected from a set of predetermined values or a numerical measurement. The dates during which the [PERSON PROPERTY](#) is effective and when the [PERSON PROPERTY](#) was observed may be recorded.~~ [The Person Diagram](#) depicts information which may be recorded for a [PERSON](#).

Related diagrams include:

- [Activity](#)
- [Category Valued Person Observation](#)
- [Care Professional](#)

## USING THE DIAGRAM

By clicking on a Class on the diagram opposite, the selected Class definition will be displayed. By clicking on an Attribute name displayed within the Class, the selected Attribute definition will be displayed.

Note that not all attributes for a class will be visible. The full list of attributes for a class can be viewed in the class definition, by selecting the 'Attribute' tab.

To view the diagram in full, select the 'Print Window' option, this will open a new window that will display only the diagram. You can also use this view to print the diagram, by right clicking on the diagram and selecting 'Print Picture'.

---

SERVICE REQUEST DIAGRAM OVERVIEW\_ renamed from REFERRAL REQUEST DIAGRAM OVERVIEW

---

Change to Supporting Information: Changed Description, Name

~~The [Referral Request Diagram](#) demonstrates how an [ACTIVITY](#) may be delivered for a [PATIENT](#) following a [REFERRAL REQUEST](#) made by a [CARE PROFESSIONAL](#).~~ [The Service Request Diagram](#) demonstrates how an [ACTIVITY](#) may be delivered for a [PATIENT](#) following a [SERVICE REQUEST](#).

Related diagrams include:

- [Activity](#)

- [Appointments](#)
- [Appointment](#)
- [Care Professional](#)
- [Lists](#)
- [Organisation](#)
- [Patient Pathway](#)

## USING THE DIAGRAM

By clicking on a Class on the diagram opposite, the selected Class definition will be displayed. By clicking on an Attribute name displayed within the Class, the selected Attribute definition will be displayed.

Note that not all attributes for a class will be visible. The full list of attributes for a class can be viewed in the class definition, by selecting the 'Attribute' tab.

To view the diagram in full, select the 'Print Window' option, this will open a new window that will display only the diagram. You can also use this view to print the diagram, by right clicking on the diagram and selecting 'Print Picture'.

---

A AND E ARRIVAL MODE (RETIRED)\_ renamed from A AND E ARRIVAL MODE

---

Change to Domain: Changed Description, status to Retired, Name

Data Type:	Numeric
Data Length:	1
1	Brought in by ambulance (including helicopter/'Air Ambulance')
2	Other

**This item has been retired from the NHS Data Model and Dictionary.**

**The last live version of this item is available in the February 2014 release of the NHS Data Model and Dictionary.**

**Access to this version can be obtained by emailing [information.standards@hscic.gov.uk](mailto:information.standards@hscic.gov.uk) with "NHS Data Model and Dictionary - Archive Request" in the email subject line.**

---

A AND E ARRIVAL MODE (RETIRED)\_ renamed from A AND E ARRIVAL MODE

---

Change to Domain: Changed Description, status to Retired, Name

- Changed Description
- Retired A and E ARRIVAL MODE
- Changed Name from Web\_Site\_Content.Pages.Domains.A\_\_and\_\_E\_ARRIVAL\_MODE to Retired.Web\_Site\_Content.Pages.Domains.A\_\_and\_\_E\_ARRIVAL\_MODE

---

ALPHANUMERIC\_ renamed from ALPHA NUMERIC

---

Change to Domain: Changed Description, Name

<del>Data Type:</del>	<del>Unknown</del>
Data Type:	Alphanumeric
<del>Data Length:</del>	<del>unknown</del>
Data Length:	Various

**~~A string of text and numbers.~~ A string of alphabetic and numeric characters (which may include symbols such as @ in an email address).**

---

ALPHA NUMERIC 3 (RETIRED)\_ renamed from ALPHA NUMERIC 3

---

**Change to Domain: Changed Description, status to Retired, Name**

Data Type:	Alphanumeric
Data Length:	3

~~A domain comprising of 3 numbers and/or characters.~~ This item has been retired from the NHS Data Model and Dictionary.

The last live version of this item is available in the February 2014 release of the NHS Data Model and Dictionary.

Access to this version can be obtained by emailing [information.standards@hscic.gov.uk](mailto:information.standards@hscic.gov.uk) with "NHS Data Model and Dictionary - Archive Request" in the email subject line.

---

ALPHA NUMERIC 3 (RETIRED)\_ renamed from ALPHA NUMERIC 3

---

**Change to Domain: Changed Description, status to Retired, Name**

- Changed Description
- Retired ALPHA NUMERIC 3
- Changed Name from `Web_Site_Content.Pages.Domains.ALPHA_NUMERIC_3` to `Retired.Web_Site_Content.Pages.Domains.ALPHA_NUMERIC_3`

---

ALPHA NUMERIC 35 (RETIRED)\_ renamed from ALPHA NUMERIC 35

---

**Change to Domain: Changed Description, status to Retired, Name**

Data Type:	Alphanumeric
Data Length:	35

~~A domain comprising of 35 numbers and/or characters.~~ This item has been retired from the NHS Data Model and Dictionary.

The last live version of this item is available in the February 2014 release of the NHS Data Model and Dictionary.

Access to this version can be obtained by emailing [information.standards@hscic.gov.uk](mailto:information.standards@hscic.gov.uk) with "NHS Data Model and Dictionary - Archive Request" in the email subject line.

---

ALPHA NUMERIC 35 (RETIRED)\_ renamed from ALPHA NUMERIC 35

---

**Change to Domain: Changed Description, status to Retired, Name**

- Changed Description
- Retired ALPHA NUMERIC 35
- Changed Name from `Web_Site_Content.Pages.Domains.ALPHA_NUMERIC_35` to `Retired.Web_Site_Content.Pages.Domains.ALPHA_NUMERIC_35`

---

ALPHA NUMERIC 4 (RETIRED)\_ renamed from ALPHA NUMERIC 4

---

**Change to Domain: Changed Description, status to Retired, Name**

Data Type:	Alphanumeric
Data Length:	4

~~A domain comprising of 4 numbers and/or characters.~~ This item has been retired from the NHS Data Model and Dictionary.

The last live version of this item is available in the February 2014 release of the NHS Data Model and Dictionary.

Access to this version can be obtained by emailing [information.standards@hscic.gov.uk](mailto:information.standards@hscic.gov.uk) with "NHS Data Model and Dictionary - Archive Request" in the email subject line.

---

ALPHA NUMERIC 4 (RETIRED)\_ renamed from ALPHA NUMERIC 4

Change to Domain: Changed Description, status to Retired, Name

- Changed Description
- Retired ALPHA NUMERIC 4
- Changed Name from `Web_Site_Content.Pages.Domains.ALPHA_NUMERIC_4` to `Retired.Web_Site_Content.Pages.Domains.ALPHA_NUMERIC_4`

---

ALPHA NUMERIC 40 (RETIRED)\_ renamed from ALPHA NUMERIC 40

Change to Domain: Changed Description, status to Retired, Name

Data Type:	Alphanumeric
Data Length:	40

~~A domain comprising of 40 numbers and/or characters.~~ This item has been retired from the NHS Data Model and Dictionary.

The last live version of this item is available in the February 2014 release of the NHS Data Model and Dictionary.

Access to this version can be obtained by emailing [information.standards@hscic.gov.uk](mailto:information.standards@hscic.gov.uk) with "NHS Data Model and Dictionary - Archive Request" in the email subject line.

---

ALPHA NUMERIC 40 (RETIRED)\_ renamed from ALPHA NUMERIC 40

Change to Domain: Changed Description, status to Retired, Name

- Changed Description
- Retired ALPHA NUMERIC 40
- Changed Name from `Web_Site_Content.Pages.Domains.ALPHA_NUMERIC_40` to `Retired.Web_Site_Content.Pages.Domains.ALPHA_NUMERIC_40`

---

ALPHA NUMERIC 5 (RETIRED)\_ renamed from ALPHA NUMERIC 5

Change to Domain: Changed Description, status to Retired, Name

Data Type:	Alphanumeric
Data Length:	5

~~A domain comprising of 5 numbers and/or characters.~~ This item has been retired from the NHS Data Model and Dictionary.

The last live version of this item is available in the February 2014 release of the NHS Data Model and Dictionary.

Access to this version can be obtained by emailing [information.standards@hscic.gov.uk](mailto:information.standards@hscic.gov.uk) with "NHS Data Model and Dictionary - Archive Request" in the email subject line.

---

ALPHA NUMERIC 5 (RETIRED)\_ renamed from ALPHA NUMERIC 5

---

Change to Domain: Changed Description, status to Retired, Name

- Changed Description
- Retired ALPHA NUMERIC 5
- Changed Name from `Web_Site_Content.Pages.Domains.ALPHA_NUMERIC_5` to `Retired.Web_Site_Content.Pages.Domains.ALPHA_NUMERIC_5`

---

ALPHA NUMERIC 7 (RETIRED)\_ renamed from ALPHA NUMERIC 7

---

Change to Domain: Changed Description, status to Retired, Name

Data Type:	Alphanumeric
Data Length:	7

~~A domain comprising of 5 numbers and/or characters.~~ This item has been retired from the NHS Data Model and Dictionary.

The last live version of this item is available in the February 2014 release of the NHS Data Model and Dictionary.

Access to this version can be obtained by emailing [information.standards@hscic.gov.uk](mailto:information.standards@hscic.gov.uk) with "NHS Data Model and Dictionary - Archive Request" in the email subject line.

---

ALPHA NUMERIC 7 (RETIRED)\_ renamed from ALPHA NUMERIC 7

---

Change to Domain: Changed Description, status to Retired, Name

- Changed Description
- Retired ALPHA NUMERIC 7
- Changed Name from `Web_Site_Content.Pages.Domains.ALPHA_NUMERIC_7` to `Retired.Web_Site_Content.Pages.Domains.ALPHA_NUMERIC_7`

---

ALPHA NUMERIC 70 (RETIRED)\_ renamed from ALPHA NUMERIC 70

---

Change to Domain: Changed Description, status to Retired, Name

Data Type:	Alphanumeric
Data Length:	70

~~A domain comprising of 70 numbers and/or characters.~~ This item has been retired from the NHS Data Model and Dictionary.

The last live version of this item is available in the February 2014 release of the NHS Data Model and Dictionary.

Access to this version can be obtained by emailing [information.standards@hscic.gov.uk](mailto:information.standards@hscic.gov.uk) with "NHS Data Model and Dictionary - Archive Request" in the email subject line.



---

ALPHA NUMERIC 70 (RETIRED)\_ renamed from ALPHA NUMERIC 70

---

**Change to Domain: Changed Description, status to Retired, Name**

- Changed Description
  - Retired ALPHA NUMERIC 70
  - Changed Name from Web\_Site\_Content.Pages.Domains.ALPHA\_NUMERIC\_70 to Retired.Web\_Site\_Content.Pages.Domains.ALPHA\_NUMERIC\_70
- 

ALPHA NUMERIC 80 (RETIRED)\_ renamed from ALPHA NUMERIC 80

---

**Change to Domain: Changed Description, status to Retired, Name**

Data Type:	Alphanumeric
Data Length:	80

**~~A domain comprising of 80 numbers and/or characters.~~ This item has been retired from the NHS Data Model and Dictionary.**

**The last live version of this item is available in the February 2014 release of the NHS Data Model and Dictionary.**

**Access to this version can be obtained by emailing [information.standards@hscic.gov.uk](mailto:information.standards@hscic.gov.uk) with "NHS Data Model and Dictionary - Archive Request" in the email subject line.**

---

ALPHA NUMERIC 80 (RETIRED)\_ renamed from ALPHA NUMERIC 80

---

**Change to Domain: Changed Description, status to Retired, Name**

- Changed Description
  - Retired ALPHA NUMERIC 80
  - Changed Name from Web\_Site\_Content.Pages.Domains.ALPHA\_NUMERIC\_80 to Retired.Web\_Site\_Content.Pages.Domains.ALPHA\_NUMERIC\_80
- 

ALPHA NUMERIC UNKNOWN (RETIRED)\_ renamed from ALPHA NUMERIC UNKNOWN

---

**Change to Domain: Changed Description, status to Retired, Name**

Data Type:	Alphanumeric
Data Length:	unknown

**~~A domain comprising of numbers and characters of an unknown length.~~ This item has been retired from the NHS Data Model and Dictionary.**

**The last live version of this item is available in the February 2014 release of the NHS Data Model and Dictionary.**

**Access to this version can be obtained by emailing [information.standards@hscic.gov.uk](mailto:information.standards@hscic.gov.uk) with "NHS Data Model and Dictionary - Archive Request" in the email subject line.**

---

ALPHA NUMERIC UNKNOWN (RETIRED)\_ renamed from ALPHA NUMERIC UNKNOWN

---

**Change to Domain: Changed Description, status to Retired, Name**

- Changed Description
- Retired ALPHA\_NUMERIC\_UNKNOWN
- Changed Name from Web\_Site\_Content.Pages.Domains.ALPHA\_NUMERIC\_UNKNOWN to Retired.Web\_Site\_Content.Pages.Domains.ALPHA\_NUMERIC\_UNKNOWN

CHARACTER (RETIRED)\_ renamed from CHARACTER

Change to Domain: Changed Description, status to Retired, Name

Data Type:	Unknown
Data Length:	unknown

~~A string of characters.~~ This item has been retired from the NHS Data Model and Dictionary.

The last live version of this item is available in the February 2014 release of the NHS Data Model and Dictionary.

Access to this version can be obtained by emailing [information.standards@hscic.gov.uk](mailto:information.standards@hscic.gov.uk) with "NHS Data Model and Dictionary - Archive Request" in the email subject line.

CHARACTER (RETIRED)\_ renamed from CHARACTER

Change to Domain: Changed Description, status to Retired, Name

- Changed Description
- Retired CHARACTER
- Changed Name from Web\_Site\_Content.Pages.Domains.CHARACTER to Retired.Web\_Site\_Content.Pages.Domains.CHARACTER

CHARACTER 15 (RETIRED)\_ renamed from CHARACTER 15

Change to Domain: Changed Description, status to Retired, Name

Data Type:	Character
Data Length:	15

~~A domain comprising of 15 characters.~~ This item has been retired from the NHS Data Model and Dictionary.

The last live version of this item is available in the February 2014 release of the NHS Data Model and Dictionary.

Access to this version can be obtained by emailing [information.standards@hscic.gov.uk](mailto:information.standards@hscic.gov.uk) with "NHS Data Model and Dictionary - Archive Request" in the email subject line.

CHARACTER 15 (RETIRED)\_ renamed from CHARACTER 15

Change to Domain: Changed Description, status to Retired, Name

- Changed Description
- Retired CHARACTER 15
- Changed Name from Web\_Site\_Content.Pages.Domains.CHARACTER\_15 to Retired.Web\_Site\_Content.Pages.Domains.CHARACTER\_15

CHARACTER 35 (RETIRED)\_ renamed from CHARACTER 35

**Change to Domain: Changed Description, status to Retired, Name**

Data Type:	Character
Data Length:	35

~~A domain comprising of 35 characters.~~ This item has been retired from the NHS Data Model and Dictionary.

The last live version of this item is available in the February 2014 release of the NHS Data Model and Dictionary.

Access to this version can be obtained by emailing [information.standards@hscic.gov.uk](mailto:information.standards@hscic.gov.uk) with "NHS Data Model and Dictionary - Archive Request" in the email subject line.

---

CHARACTER 35 (RETIRED)\_ renamed from CHARACTER 35

**Change to Domain: Changed Description, status to Retired, Name**

- Changed Description
- Retired CHARACTER 35
- Changed Name from `Web_Site_Content.Pages.Domains.CHARACTER_35` to `Retired.Web_Site_Content.Pages.Domains.CHARACTER_35`

---

CHARACTER 5 (RETIRED)\_ renamed from CHARACTER 5

**Change to Domain: Changed Description, status to Retired, Name**

Data Type:	Character
Data Length:	5

~~A domain comprising of 5 characters.~~ This item has been retired from the NHS Data Model and Dictionary.

The last live version of this item is available in the February 2014 release of the NHS Data Model and Dictionary.

Access to this version can be obtained by emailing [information.standards@hscic.gov.uk](mailto:information.standards@hscic.gov.uk) with "NHS Data Model and Dictionary - Archive Request" in the email subject line.

---

CHARACTER 5 (RETIRED)\_ renamed from CHARACTER 5

**Change to Domain: Changed Description, status to Retired, Name**

- Changed Description
- Retired CHARACTER 5
- Changed Name from `Web_Site_Content.Pages.Domains.CHARACTER_5` to `Retired.Web_Site_Content.Pages.Domains.CHARACTER_5`

---

CHARACTER 8 (RETIRED)\_ renamed from CHARACTER 8

**Change to Domain: Changed Description, status to Retired, Name**

Data Type:	Character
Data Length:	8

~~A domain comprising of 8 characters.~~This item has been retired from the NHS Data Model and Dictionary.

The last live version of this item is available in the February 2014 release of the NHS Data Model and Dictionary.

Access to this version can be obtained by emailing [information.standards@hscic.gov.uk](mailto:information.standards@hscic.gov.uk) with "NHS Data Model and Dictionary - Archive Request" in the email subject line.

---

CHARACTER 8 (RETIRED)\_ renamed from CHARACTER 8

Change to Domain: Changed Description, status to Retired, Name

- Changed Description
- Retired CHARACTER 8
- Changed Name from Web\_Site\_Content.Pages.Domains.CHARACTER\_8 to Retired.Web\_Site\_Content.Pages.Domains.CHARACTER\_8

---

CHARACTER UNKNOWN (RETIRED)\_ renamed from CHARACTER UNKNOWN

Change to Domain: Changed Description, status to Retired, Name

Data Type:	Character
Data Length:	unknown

~~A domain comprising of characters which is of an unknown length.~~This item has been retired from the NHS Data Model and Dictionary.

The last live version of this item is available in the February 2014 release of the NHS Data Model and Dictionary.

Access to this version can be obtained by emailing [information.standards@hscic.gov.uk](mailto:information.standards@hscic.gov.uk) with "NHS Data Model and Dictionary - Archive Request" in the email subject line.

---

CHARACTER UNKNOWN (RETIRED)\_ renamed from CHARACTER UNKNOWN

Change to Domain: Changed Description, status to Retired, Name

- Changed Description
- Retired CHARACTER UNKNOWN
- Changed Name from Web\_Site\_Content.Pages.Domains.CHARACTER\_UNKNOWN to Retired.Web\_Site\_Content.Pages.Domains.CHARACTER\_UNKNOWN

---

CLASSIFICATION

Change to Domain: Changed Description

Data Type:	Unknown
Data Type:	Alphanumeric
Data Length:	unknown
Data Length:	Various

~~A set of coded values which may apply to one or more attribute or element that are agreed as a national standard and may vary in content and coding according to the creator.~~A set of codes defined on attributes which are used for derivation purposes.

---

CLASSIFICATION UNSPECIFIED (RETIRED)\_ renamed from CLASSIFICATION UNSPECIFIED

---

**Change to Domain: Changed Description, status to Retired, Name**

Data Type:	Unknown
Data Length:	unknown

~~A domain which has a set of values that may be specified locally. The codes used to identify these values may vary. It is therefore not possible to specify the nature of the domain in terms of the type or length of characters in the Data Dictionary. Examples of values and codes to use may, however, be provided on the attribute.~~This item has been retired from the NHS Data Model and Dictionary.

The last live version of this item is available in the February 2014 release of the NHS Data Model and Dictionary.

Access to this version can be obtained by emailing [information.standards@hscic.gov.uk](mailto:information.standards@hscic.gov.uk) with "NHS Data Model and Dictionary - Archive Request" in the email subject line.

---

CLASSIFICATION UNSPECIFIED (RETIRED)\_ renamed from CLASSIFICATION UNSPECIFIED

---

**Change to Domain: Changed Description, status to Retired, Name**

- Changed Description
- Retired CLASSIFICATION UNSPECIFIED
- Changed Name from Web\_Site\_Content.Pages.Domains.CLASSIFICATION\_UNSPECIFIED to Retired.Web\_Site\_Content.Pages.Domains.CLASSIFICATION\_UNSPECIFIED

---

DATE\_ renamed from DATE E-GIF

---

**Change to Domain: Changed Description, Name**

Data Type:	Alphanumeric
Data Length:	±0
Data Length:	Various

~~The day, month, year and century, or any combination of these elements, of an event.~~

**Note:**

This was [e-GIF](#) approved for use in NHS England:

~~[e-GIF](#) and the [Government Data Standards Catalogue](#) have been archived and are available for reference only.~~

The year, month and day of an event.

---

DATE AND TIME\_ renamed from DATE AND TIME E-GIF

---

**Change to Domain: Changed Description, Name**

Data Type:	Unknown
Data Type:	Alphanumeric
Data Length:	YYYY-MM-DDThh:mm:ssTZD
Data Length:	Various

~~The combined date and time of an event.~~

**Note:**

This was [e-GIF](#) approved for use in NHS England.

[e-GIF](#) and the [Government Data Standards Catalogue](#) have been archived and are available for reference only.

**The combined DATE and TIME of an event.**

---

DELIVERY PLACE TYPE (RETIRED)\_ renamed from DELIVERY PLACE TYPE

---

Change to Domain: Changed Description, status to Retired, Name

Data Type:	Numeric
Data Length:	1

A coded classification of the initial intention for place of delivery and actual place of delivery. This item has been retired from the NHS Data Model and Dictionary.

Please note that when domains are implemented the national codes present on attributes [ACTUAL DELIVERY PLACE](#) and [INTENDED DELIVERY PLACE](#) will be held at this domain level and not at the attribute level, i.e. on the attributes the following text will be inserted instead: 'This item is part of the domain: [DELIVERY PLACE TYPE](#).' The last live version of this item is available in the February 2014 release of the NHS Data Model and Dictionary.

Access to this version can be obtained by emailing [information.standards@hscic.gov.uk](mailto:information.standards@hscic.gov.uk) with "NHS Data Model and Dictionary - Archive Request" in the email subject line.

---

DELIVERY PLACE TYPE (RETIRED)\_ renamed from DELIVERY PLACE TYPE

---

Change to Domain: Changed Description, status to Retired, Name

- Changed Description
- Retired DELIVERY PLACE TYPE
- Changed Name from Web\_Site\_Content.Pages.Domains.DELIVERY\_PLACE\_TYPE to Retired.Web\_Site\_Content.Pages.Domains.DELIVERY\_PLACE\_TYPE

---

FLAG 1 (RETIRED)\_ renamed from FLAG 1

---

Change to Domain: Changed Description, status to Retired, Name

Data Type:	Alphanumeric
Data Length:	1

**National Codes:** This item has been retired from the NHS Data Model and Dictionary.

1	Yes
2	No
9	Unknown

The last live version of this item is available in the February 2014 release of the NHS Data Model and Dictionary.

Access to this version can be obtained by emailing [information.standards@hscic.gov.uk](mailto:information.standards@hscic.gov.uk) with "NHS Data Model and Dictionary - Archive Request" in the email subject line.

FLAG 1 (RETIRED)\_ renamed from FLAG 1

Change to Domain: Changed Description, status to Retired, Name

- Changed Description
- Retired FLAG 1
- Changed Name from Web\_Site\_Content.Pages.Domains.FLAG\_1 to Retired.Web\_Site\_Content.Pages.Domains.FLAG\_1

IDENTIFIER (RETIRED)\_ renamed from IDENTIFIER

Change to Domain: Changed Description, status to Retired, Name

Data Type:	Unknown
Data Length:	unknown

~~A code which uniquely identifies the value of one or more attributes. A code is usually meaningless in itself and may be system generated.~~This item has been retired from the NHS Data Model and Dictionary.

The last live version of this item is available in the February 2014 release of the NHS Data Model and Dictionary.

Access to this version can be obtained by emailing [information.standards@hscic.gov.uk](mailto:information.standards@hscic.gov.uk) with "NHS Data Model and Dictionary - Archive Request" in the email subject line.

IDENTIFIER (RETIRED)\_ renamed from IDENTIFIER

Change to Domain: Changed Description, status to Retired, Name

- Changed Description
- Retired IDENTIFIER
- Changed Name from Web\_Site\_Content.Pages.Domains.IDENTIFIER to Retired.Web\_Site\_Content.Pages.Domains.IDENTIFIER

IDENTIFIER ALPHA NUMERIC 10 (RETIRED)\_ renamed from IDENTIFIER ALPHA NUMERIC 10

Change to Domain: Changed Description, status to Retired, Name

Data Type:	Alphanumeric
Data Length:	10

~~A domain that describes an attribute which is a unique code identifying other attributes. It comprises of 10 numbers and/or characters.~~This item has been retired from the NHS Data Model and Dictionary.

The last live version of this item is available in the February 2014 release of the NHS Data Model and Dictionary.

Access to this version can be obtained by emailing [information.standards@hscic.gov.uk](mailto:information.standards@hscic.gov.uk) with "NHS Data Model and Dictionary - Archive Request" in the email subject line.

IDENTIFIER ALPHA NUMERIC 10 (RETIRED)\_ renamed from IDENTIFIER ALPHA NUMERIC 10

Change to Domain: Changed Description, status to Retired, Name

- Changed Description

- Retired IDENTIFIER ALPHA NUMERIC 10
- Changed Name from Web\_Site\_Content.Pages.Domains.IDENTIFIER\_ALPHA\_NUMERIC\_10 to Retired.Web\_Site\_Content.Pages.Domains.IDENTIFIER\_ALPHA\_NUMERIC\_10

---

IDENTIFIER ALPHA NUMERIC 12 (RETIRED)\_ renamed from IDENTIFIER ALPHA NUMERIC 12

---

Change to Domain: Changed Description, status to Retired, Name

Data Type:	Alphanumeric
Data Length:	12

~~A domain that describes an attribute which is a unique code identifying other attributes. It comprises of 12 numbers and/or characters.~~ This item has been retired from the NHS Data Model and Dictionary.

The last live version of this item is available in the February 2014 release of the NHS Data Model and Dictionary.

Access to this version can be obtained by emailing [information.standards@hscic.gov.uk](mailto:information.standards@hscic.gov.uk) with "NHS Data Model and Dictionary - Archive Request" in the email subject line.

---

IDENTIFIER ALPHA NUMERIC 12 (RETIRED)\_ renamed from IDENTIFIER ALPHA NUMERIC 12

---

Change to Domain: Changed Description, status to Retired, Name

- Changed Description
- Retired IDENTIFIER ALPHA NUMERIC 12
- Changed Name from Web\_Site\_Content.Pages.Domains.IDENTIFIER\_ALPHA\_NUMERIC\_12 to Retired.Web\_Site\_Content.Pages.Domains.IDENTIFIER\_ALPHA\_NUMERIC\_12

---

IDENTIFIER ALPHA NUMERIC 5 (RETIRED)\_ renamed from IDENTIFIER ALPHA NUMERIC 5

---

Change to Domain: Changed Description, status to Retired, Name

Data Type:	Alphanumeric
Data Length:	5

~~A domain that describes an attribute which is a unique code identifying other attributes. It comprises of 5 numbers and/or characters.~~ This item has been retired from the NHS Data Model and Dictionary.

The last live version of this item is available in the February 2014 release of the NHS Data Model and Dictionary.

Access to this version can be obtained by emailing [information.standards@hscic.gov.uk](mailto:information.standards@hscic.gov.uk) with "NHS Data Model and Dictionary - Archive Request" in the email subject line.

---

IDENTIFIER ALPHA NUMERIC 5 (RETIRED)\_ renamed from IDENTIFIER ALPHA NUMERIC 5

---

Change to Domain: Changed Description, status to Retired, Name

- Changed Description
- Retired IDENTIFIER ALPHA NUMERIC 5
- Changed Name from Web\_Site\_Content.Pages.Domains.IDENTIFIER\_ALPHA\_NUMERIC\_5 to Retired.Web\_Site\_Content.Pages.Domains.IDENTIFIER\_ALPHA\_NUMERIC\_5

---

IDENTIFIER ALPHA NUMERIC 6 (RETIRED)\_ renamed from IDENTIFIER ALPHA NUMERIC 6

---



**Change to Domain: Changed Description, status to Retired, Name**

Data Type:	Alphanumeric
Data Length:	6

~~A domain that describes an attribute which is a unique code identifying other attributes. It comprises of 6 numbers and/or characters.~~ This item has been retired from the NHS Data Model and Dictionary.

The last live version of this item is available in the February 2014 release of the NHS Data Model and Dictionary.

Access to this version can be obtained by emailing [information.standards@hscic.gov.uk](mailto:information.standards@hscic.gov.uk) with "NHS Data Model and Dictionary - Archive Request" in the email subject line.

---

IDENTIFIER ALPHA NUMERIC 6 (RETIRED) renamed from IDENTIFIER ALPHA NUMERIC 6

**Change to Domain: Changed Description, status to Retired, Name**

- Changed Description
- Retired IDENTIFIER ALPHA NUMERIC 6
- Changed Name from `Web_Site_Content.Pages.Domains.IDENTIFIER_ALPHA_NUMERIC_6` to `Retired.Web_Site_Content.Pages.Domains.IDENTIFIER_ALPHA_NUMERIC_6`

---

IDENTIFIER CHARACTER 14 (RETIRED) renamed from IDENTIFIER CHARACTER 14

**Change to Domain: Changed Description, status to Retired, Name**

Data Type:	Character
Data Length:	14

~~A domain that describes an attribute which is a unique code identifying other attributes. It comprises of 14 characters.~~ This item has been retired from the NHS Data Model and Dictionary.

The last live version of this item is available in the February 2014 release of the NHS Data Model and Dictionary.

Access to this version can be obtained by emailing [information.standards@hscic.gov.uk](mailto:information.standards@hscic.gov.uk) with "NHS Data Model and Dictionary - Archive Request" in the email subject line.

---

IDENTIFIER CHARACTER 14 (RETIRED) renamed from IDENTIFIER CHARACTER 14

**Change to Domain: Changed Description, status to Retired, Name**

- Changed Description
- Retired IDENTIFIER CHARACTER 14
- Changed Name from `Web_Site_Content.Pages.Domains.IDENTIFIER_CHARACTER_14` to `Retired.Web_Site_Content.Pages.Domains.IDENTIFIER_CHARACTER_14`

---

IDENTIFIER NUMERIC 3 (RETIRED) renamed from IDENTIFIER NUMERIC 3

**Change to Domain: Changed Description, status to Retired, Name**

Data Type:	Numeric
Data Length:	3

~~A domain that describes an attribute which is a unique code identifying other attributes. It comprises of 3 numbers.~~This item has been retired from the NHS Data Model and Dictionary.

The last live version of this item is available in the February 2014 release of the NHS Data Model and Dictionary.

Access to this version can be obtained by emailing [information.standards@hscic.gov.uk](mailto:information.standards@hscic.gov.uk) with "NHS Data Model and Dictionary - Archive Request" in the email subject line.

---

IDENTIFIER NUMERIC 3 (RETIRED)\_ renamed from IDENTIFIER NUMERIC 3

---

Change to Domain: Changed Description, status to Retired, Name

- Changed Description
- Retired IDENTIFIER NUMERIC 3
- Changed Name from Web\_Site\_Content.Pages.Domains.IDENTIFIER\_NUMERIC\_3 to Retired.Web\_Site\_Content.Pages.Domains.IDENTIFIER\_NUMERIC\_3

---

IDENTIFIER UNKNOWN (RETIRED)\_ renamed from IDENTIFIER UNKNOWN

---

Change to Domain: Changed Description, status to Retired, Name

Data Type:	Unknown
Data Length:	unknown

~~A domain that describes an attribute which is a unique code identifying other attributes. The format type and length of the item is unknown.~~This item has been retired from the NHS Data Model and Dictionary.

The last live version of this item is available in the February 2014 release of the NHS Data Model and Dictionary.

Access to this version can be obtained by emailing [information.standards@hscic.gov.uk](mailto:information.standards@hscic.gov.uk) with "NHS Data Model and Dictionary - Archive Request" in the email subject line.

---

IDENTIFIER UNKNOWN (RETIRED)\_ renamed from IDENTIFIER UNKNOWN

---

Change to Domain: Changed Description, status to Retired, Name

- Changed Description
- Retired IDENTIFIER UNKNOWN
- Changed Name from Web\_Site\_Content.Pages.Domains.IDENTIFIER\_UNKNOWN to Retired.Web\_Site\_Content.Pages.Domains.IDENTIFIER\_UNKNOWN

---

NATIONAL CODE

---

Change to Domain: Changed Description

Data Type:	Unknown
Data Type:	Alphanumeric
Data Length:	unknown
Data Length:	Various

~~A set of coded values which apply to one or more attributes or elements that have been approved as an NHS Data Standard.~~

A set of codes defined on attributes and data elements which are used for reporting within a data set.

---

NUMERIC

---

**Change to Domain: Changed Description**

Data Type:	Unknown
Data Type:	Numeric
Data Length:	unknown
Data Length:	Various

~~Any unsigned item which contains purely numbers, no characters. Decimal places may be included. A string of numeric characters.~~

---

NUMERIC 1 (RETIRED)\_ renamed from NUMERIC 1

---

**Change to Domain: Changed Description, status to Retired, Name**

Data Type:	Numeric
Data Length:	1

~~A domain comprising of 1 whole number.~~ This item has been retired from the NHS Data Model and Dictionary.

The last live version of this item is available in the February 2014 release of the NHS Data Model and Dictionary.

Access to this version can be obtained by emailing [information.standards@hscic.gov.uk](mailto:information.standards@hscic.gov.uk) with "NHS Data Model and Dictionary - Archive Request" in the email subject line.

---

NUMERIC 1 (RETIRED)\_ renamed from NUMERIC 1

---

**Change to Domain: Changed Description, status to Retired, Name**

- Changed Description
- Retired NUMERIC 1
- Changed Name from Web\_Site\_Content.Pages.Domains.NUMERIC\_1 to Retired.Web\_Site\_Content.Pages.Domains.NUMERIC\_1

---

NUMERIC 2.2 (RETIRED)\_ renamed from NUMERIC 2.2

---

**Change to Domain: Changed Description, status to Retired, Name**

Data Type:	Numeric
Data Length:	2.2

~~A domain comprising of 2 whole numbers and 2 decimal places.~~ This item has been retired from the NHS Data Model and Dictionary.

The last live version of this item is available in the February 2014 release of the NHS Data Model and Dictionary.

Access to this version can be obtained by emailing [information.standards@hscic.gov.uk](mailto:information.standards@hscic.gov.uk) with "NHS Data Model and Dictionary - Archive Request" in the email subject line.

---

NUMERIC 2.2 (RETIRED)\_ renamed from NUMERIC 2.2

---

**Change to Domain: Changed Description, status to Retired, Name**

- Changed Description
  - Retired NUMERIC 2.2
  - Changed Name from Web\_Site\_Content.Pages.Domains.NUMERIC\_2.2 to Retired.Web\_Site\_Content.Pages.Domains.NUMERIC\_2.2
- 

NUMERIC 2 (RETIRED)\_ renamed from NUMERIC 2

---

**Change to Domain: Changed Description, status to Retired, Name**

Data Type:	Numeric
Data Length:	2

~~A domain comprising of 2 whole numbers.~~ This item has been retired from the NHS Data Model and Dictionary.

The last live version of this item is available in the February 2014 release of the NHS Data Model and Dictionary.

Access to this version can be obtained by emailing [information.standards@hscic.gov.uk](mailto:information.standards@hscic.gov.uk) with "NHS Data Model and Dictionary - Archive Request" in the email subject line.

---

NUMERIC 2 (RETIRED)\_ renamed from NUMERIC 2

---

**Change to Domain: Changed Description, status to Retired, Name**

- Changed Description
  - Retired NUMERIC 2
  - Changed Name from Web\_Site\_Content.Pages.Domains.NUMERIC\_2 to Retired.Web\_Site\_Content.Pages.Domains.NUMERIC\_2
- 

NUMERIC 3.2 (RETIRED)\_ renamed from NUMERIC 3.2

---

**Change to Domain: Changed Description, status to Retired, Name**

Data Type:	Numeric
Data Length:	unknown

~~A domain comprising of 3 whole numbers and 2 decimal places.~~ This item has been retired from the NHS Data Model and Dictionary.

The last live version of this item is available in the February 2014 release of the NHS Data Model and Dictionary.

Access to this version can be obtained by emailing [information.standards@hscic.gov.uk](mailto:information.standards@hscic.gov.uk) with "NHS Data Model and Dictionary - Archive Request" in the email subject line.

---

NUMERIC 3.2 (RETIRED)\_ renamed from NUMERIC 3.2

---

**Change to Domain: Changed Description, status to Retired, Name**

- Changed Description
- Retired NUMERIC 3.2
- Changed Name from Web\_Site\_Content.Pages.Domains.NUMERIC\_3.2 to Retired.Web\_Site\_Content.Pages.Domains.NUMERIC\_3.2

NUMERIC 3 (RETIRED)\_ renamed from NUMERIC 3

Change to Domain: Changed Description, status to Retired, Name

Data Type:	Numeric
Data Length:	3

~~A domain comprising of 3 whole numbers.~~ This item has been retired from the NHS Data Model and Dictionary.

The last live version of this item is available in the February 2014 release of the NHS Data Model and Dictionary.

Access to this version can be obtained by emailing [information.standards@hscic.gov.uk](mailto:information.standards@hscic.gov.uk) with "NHS Data Model and Dictionary - Archive Request" in the email subject line.

NUMERIC 3 (RETIRED)\_ renamed from NUMERIC 3

Change to Domain: Changed Description, status to Retired, Name

- Changed Description
- Retired NUMERIC 3
- Changed Name from Web\_Site\_Content.Pages.Domains.NUMERIC\_3 to Retired.Web\_Site\_Content.Pages.Domains.NUMERIC\_3

NUMERIC 4.1 (RETIRED)\_ renamed from NUMERIC 4.1

Change to Domain: Changed Description, status to Retired, Name

Data Type:	Numeric
Data Length:	4.1

~~A domain comprising of 4 whole numbers and 1 decimal places.~~ This item has been retired from the NHS Data Model and Dictionary.

The last live version of this item is available in the February 2014 release of the NHS Data Model and Dictionary.

Access to this version can be obtained by emailing [information.standards@hscic.gov.uk](mailto:information.standards@hscic.gov.uk) with "NHS Data Model and Dictionary - Archive Request" in the email subject line.

NUMERIC 4.1 (RETIRED)\_ renamed from NUMERIC 4.1

Change to Domain: Changed Description, status to Retired, Name

- Changed Description
- Retired NUMERIC 4.1
- Changed Name from Web\_Site\_Content.Pages.Domains.NUMERIC\_4.1 to Retired.Web\_Site\_Content.Pages.Domains.NUMERIC\_4.1

NUMERIC 4.2 (RETIRED)\_ renamed from NUMERIC 4.2

---

**Change to Domain: Changed Description, status to Retired, Name**

Data Type:	Numeric
Data Length:	4.2

~~A domain comprising of 4 whole numbers and 2 decimal places.~~ This item has been retired from the NHS Data Model and Dictionary.

The last live version of this item is available in the February 2014 release of the NHS Data Model and Dictionary.

Access to this version can be obtained by emailing [information.standards@hscic.gov.uk](mailto:information.standards@hscic.gov.uk) with "NHS Data Model and Dictionary - Archive Request" in the email subject line.

---

NUMERIC 4.2 (RETIRED)\_ renamed from NUMERIC 4.2

---

**Change to Domain: Changed Description, status to Retired, Name**

- Changed Description
  - Retired NUMERIC 4.2
  - Changed Name from Web\_Site\_Content.Pages.Domains.NUMERIC\_4.2 to Retired.Web\_Site\_Content.Pages.Domains.NUMERIC\_4.2
- 

NUMERIC 4 (RETIRED)\_ renamed from NUMERIC 4

---

**Change to Domain: Changed Description, status to Retired, Name**

Data Type:	Numeric
Data Length:	4

~~A domain comprising of 4 whole numbers.~~ This item has been retired from the NHS Data Model and Dictionary.

The last live version of this item is available in the February 2014 release of the NHS Data Model and Dictionary.

Access to this version can be obtained by emailing [information.standards@hscic.gov.uk](mailto:information.standards@hscic.gov.uk) with "NHS Data Model and Dictionary - Archive Request" in the email subject line.

---

NUMERIC 4 (RETIRED)\_ renamed from NUMERIC 4

---

**Change to Domain: Changed Description, status to Retired, Name**

- Changed Description
  - Retired NUMERIC 4
  - Changed Name from Web\_Site\_Content.Pages.Domains.NUMERIC\_4 to Retired.Web\_Site\_Content.Pages.Domains.NUMERIC\_4
- 

NUMERIC UNKNOWN (RETIRED)\_ renamed from NUMERIC UNKNOWN

---

**Change to Domain: Changed Description, status to Retired, Name**

Data Type:	Numeric
Data Length:	unknown

~~A numeric domain of which the size is unknown.~~ This item has been retired from the NHS Data Model and Dictionary.

The last live version of this item is available in the February 2014 release of the NHS Data Model and Dictionary.

Access to this version can be obtained by emailing [information.standards@hscic.gov.uk](mailto:information.standards@hscic.gov.uk) with "NHS Data Model and Dictionary - Archive Request" in the email subject line.

---

NUMERIC UNKNOWN (RETIRED)\_ renamed from NUMERIC UNKNOWN

Change to Domain: Changed Description, status to Retired, Name

- Changed Description
- Retired NUMERIC UNKNOWN
- Changed Name from Web\_Site\_Content.Pages.Domains.NUMERIC\_UNKNOWN to Retired.Web\_Site\_Content.Pages.Domains.NUMERIC\_UNKNOWN

---

PERCENTAGE (RETIRED)\_ renamed from PERCENTAGE

Change to Domain: Changed Description, status to Retired, Name

Data Type:	Numeric
Data Length:	unknown

~~A domain which includes a percentage sign.~~ This item has been retired from the NHS Data Model and Dictionary.

~~A percentage defined as a proportion or rate per hundred parts.~~

**Note:**

This was ~~e-GIF~~ approved for use in NHS England:

~~e-GIF and the [Government Data Standards Catalogue](#) have been archived and are available for reference only.~~ The last live version of this item is available in the February 2014 release of the NHS Data Model and Dictionary.

Access to this version can be obtained by emailing [information.standards@hscic.gov.uk](mailto:information.standards@hscic.gov.uk) with "NHS Data Model and Dictionary - Archive Request" in the email subject line.

---

PERCENTAGE (RETIRED)\_ renamed from PERCENTAGE

Change to Domain: Changed Description, status to Retired, Name

- Changed Description
- Retired PERCENTAGE
- Changed Name from Web\_Site\_Content.Pages.Domains.PERCENTAGE to Retired.Web\_Site\_Content.Pages.Domains.PERCENTAGE

---

STERLING (RETIRED)\_ renamed from STERLING

Change to Domain: Changed Description, status to Retired, Name

Data Type:	Numeric
Data Length:	unknown

~~A domain used to identify money attributes or data elements which comprises of a + or - sign and a £ sign. This item has been retired from the NHS Data Model and Dictionary.~~

**AMOUNT-STERLING** is an amount of money where the **CURRENCY-TYPE** equals 'GBP-Pound Sterling'. The last live version of this item is available in the February 2014 release of the NHS Data Model and Dictionary.

**Note:**

This was **e-GIF** approved for use in NHS England.

**e-GIF** and the **Government Data Standards Catalogue** have been archived and are available for reference only. Access to this version can be obtained by emailing [information.standards@hscic.gov.uk](mailto:information.standards@hscic.gov.uk) with "NHS Data Model and Dictionary - Archive Request" in the email subject line.

---

STERLING (RETIRED)\_ renamed from STERLING

**Change to Domain: Changed Description, status to Retired, Name**

- Changed Description
- Retired STERLING
- Changed Name from Web\_Site\_Content.Pages.Domains.STERLING to Retired.Web\_Site\_Content.Pages.Domains.STERLING

---

SYMBOL (RETIRED)\_ renamed from SYMBOL

**Change to Domain: Changed Description, status to Retired, Name**

Data Type:	Unknown
Data Length:	unknown

~~A data item which is contains one or more symbols. An example may be a price which is prefixed by a £ or a financial number which can have a + or - as a prefix or suffix. This item has been retired from the NHS Data Model and Dictionary.~~

The last live version of this item is available in the February 2014 release of the NHS Data Model and Dictionary.

Access to this version can be obtained by emailing [information.standards@hscic.gov.uk](mailto:information.standards@hscic.gov.uk) with "NHS Data Model and Dictionary - Archive Request" in the email subject line.

---

SYMBOL (RETIRED)\_ renamed from SYMBOL

**Change to Domain: Changed Description, status to Retired, Name**

- Changed Description
- Retired SYMBOL
- Changed Name from Web\_Site\_Content.Pages.Domains.SYMBOL to Retired.Web\_Site\_Content.Pages.Domains.SYMBOL

---

TIME\_ renamed from TIME E-GIF

**Change to Domain: Changed Description, Name**

Data Type:	Alphanumeric
Data Length:	&
Data Length:	Various



~~The time (using a 24 hour clock) at which an event, or the action in an event, takes place.~~

**Note:**

~~This was [e-GIF](#) approved for use in NHS England.~~

~~[e-GIF](#) and the [Government Data Standards Catalogue](#) have been archived and are available for reference only.~~

**The time of an event.**

---

For enquiries about this Change Request, please email [information.standards@hscic.gov.uk](mailto:information.standards@hscic.gov.uk)