

Health and Social Care Information Centre

NHS Data Model and Dictionary Service

Type:	Data Dictionary Change Notice
Reference:	1458
Version No:	1.0
Subject:	Retirement of Standards - DSCNs - 11/97/P05, 12/97/P06, 15/97/P09, 18/97/P12, 22/96/P19, 32/96/P27, 49/97/P35, 62/95/P51, 07/2007, 08/2009, 17/92, 20/2001, 22/2006 and 38/2002
Effective Date:	1 April 2014
Reason for Change:	Retirement of Data Standards
Publication Date:	26 February 2014

Background:

The Information Standards Board for Health and Social Care (ISB) has conducted a review of all Data Set Change Notices (DSCNs) and Information Standards Notices (ISNs) issued since 1987, to update its portfolio of standards prior to the handover of responsibility to NHS England, the Health and Social Care Information Centre (HSCIC) and Public Health England.

This review has identified a number of data standards in the NHS Data Model and Dictionary which have been superseded or are no longer in use.

This Data Dictionary Change Notice (DDCN) retires the items in the NHS Data Model and Dictionary in line with the retirement of the following Data Set Change Notices, as listed on the ISB [Advanced Notification - Withdrawal](#) issued 26/09/13:

- DSCN 11/97/P05 Data Standards: Community Pharmacies - PHS1
- DSCN 12/97/P06 Data Standards: General Ophthalmic Services
- DSCN 15/97/P09 Data Standards: Nursing Homes, Residential Care Homes and Group Homes
- DSCN 18/97/P12 Data Standards: Minor Changes to Data Standards
- DSCN 22/96/P19 Data Standards: to bring definitions in line with the most recent advice
- DSCN 32/96/P27 Change to support reports required under the AIDS (Control) Act
- DSCN 49/97/P35 Data Standards: Various Minor Changes
- DSCN 62/95/P51 MIDWIFE EPISODES, to align with 18/95/P17
- DSCN 07/2007 Identification Codes for Dental Consultants
- DSCN 08/2009 NHS Prescription Services and NHS Dental Services
- DSCN 17/92 Data Definitions - Community Episodes, Still Births, Community Classifications, APPOINTMENT SLOT, Radiotherapy, PATHOLOGY SPECIALTY, Procedure Group, Identical Entity Type and Attribute Names, ME Quarterly Monitoring forms, SPECIALTY FUNCTION
- DSCN 20/2001 Data Standards: NHS Plan: Booking Systems
- DSCN 22/2006 Organisation Codes/Organisation Site Codes
- DSCN 38/2002 Data Standards: Requirement for Accreditation RFA99

To view a demonstration on "How to Read an NHS Data Model and Dictionary Change Request", visit the NHS Data Model and Dictionary help pages at: http://www.datadictionary.nhs.uk/Flash_Files/changerequest.htm.

Note: if the web page does not open, please copy the link and paste into the web browser.

Summary of changes:

Diagrams

[CARE PROFESSIONAL DIAGRAM](#)

Changed Diagram

COMMUNITY DIAGRAM	Changed Diagram
LISTS DIAGRAM	Changed Diagram
REFERRAL REQUEST DIAGRAM	Changed Diagram
Supporting Information	
CATCHMENT AREA (RETIRED) renamed from CATCHMENT AREA	Changed status to Retired, Name, Description
CONTACT TRACING PROGRAMME (RETIRED)	Changed Description
ELECTORAL WARD (RETIRED) renamed from ELECTORAL WARD	Changed status to Retired, Name, Description
FACE TO FACE CONTACT OPTICAL (RETIRED)	Changed Description
HEALTH PROMOTION TARGET POPULATION (RETIRED) renamed from HEALTH PROMOTION TARGET POPULATION	Changed status to Retired, Name, Description
LISTS DIAGRAM OVERVIEW	Changed Description
MIDWIFE EPISODE	Changed Description
PERSON IN A CONTACT TRACING PROGRAMME (RETIRED)	Changed Description
PERSON NATIONALITY OR RESIDENCY STATUS (RETIRED) renamed from PERSON NATIONALITY OR RESIDENCY STATUS	Changed status to Retired, Name, Description
PROFESSIONAL ADVICE AND SUPPORT CONTACT (RETIRED)	Changed Description
SIGHT TEST (RETIRED)	Changed Description
Class Definitions	
BROAD PATIENT GROUP	Changed Relationships
CARE CONTACT	Changed Attributes
CLINICAL INTERVENTION	Changed Attributes
CLINIC OR FACILITY	Changed Attributes
ELECTIVE ADMISSION LIST ENTRY	Changed Attributes
HEALTH PROGRAMME	Changed Attributes
OFFER OF ADMISSION	Changed Attributes
OPHTHALMIC MEDICAL PRACTITIONER	Changed Attributes
ORGANISATION SITE	Changed Relationships, Attributes
ORGANISATION SITE BED OCCUPANCY (RETIRED) renamed from ORGANISATION SITE BED OCCUPANCY	Changed status to Retired, Name, Description, Attributes
PATIENT	Changed Attributes
PRIOR NOTIFICATION LIST ENTRY (RETIRED)	Changed Description
PRIOR NOTIFICATION LIST FOR CYTOLOGY (RETIRED)	Changed Description
REFERRAL REQUEST	Changed Relationships
REFERRAL REQUEST STATUS (RETIRED) renamed from REFERRAL REQUEST STATUS	Changed status to Retired, Name, Description, Attributes
Attribute Definitions	
ADMISSION BOOKING SYSTEM TYPE (RETIRED) renamed from ADMISSION BOOKING SYSTEM TYPE	Changed status to Retired, Name, Description
AVAILABLE BED DAYS NHS PATIENTS (RETIRED)	Changed Description
AVAILABLE BED DAYS NON-NHS PATIENTS (RETIRED)	Changed Description
CARER PERMISSION DATE (RETIRED) renamed from CARER PERMISSION DATE	Changed status to Retired, Name, Description
CERVICAL SCREENING TEST STATUS (RETIRED)	Changed Description
COMMUNITY PHARMACY SITE CLOSED DATE (RETIRED)	Changed Description
COMMUNITY PHARMACY SITE OPENED DATE (RETIRED)	Changed Description
CONTACT TRACING DISEASE TYPE (RETIRED)	Changed Description
CYTOLOGY RECALL CEASE CODE (RETIRED) renamed from CYTOLOGY RECALL CEASE CODE	Changed status to Retired, Name, Description
CYTOLOGY RECALL DELAY CODE (RETIRED) renamed from CYTOLOGY RECALL DELAY CODE	Changed status to Retired, Name, Description
CYTOLOGY SCREENING PLAN CUT OFF (RETIRED)	Changed Description
CYTOLOGY SCREENING PLAN DATE (RETIRED)	Changed Description

CYTOLOGY SCREENING PLAN NUMBER (RETIRED)	Changed Description
DIAGNOSTIC FACILITIES ACUTE (RETIRED)	Changed Description
DISTANCE TO NEXT AVAILABLE PHARMACY (RETIRED)	Changed Description
DRUG TREATMENT COST (RETIRED) renamed from DRUG TREATMENT COST	Changed status to Retired, Name, Description
ELIGIBILITY OUTCOME (RETIRED)	Changed Description
ESSENTIAL SMALL PHARMACY INDICATOR (RETIRED)	Changed Description
GEOGRAPHIC AREA TYPE (RETIRED)	Changed Description
INITIAL CONTACT WITHIN FIVE DAYS (RETIRED)	Changed Description
LABOUR PROFESSIONAL PRIOR INVOLVEMENT (RETIRED) renamed from LABOUR PROFESSIONAL PRIOR INVOLVEMENT	Changed status to Retired, Name, Description
MIDWIFE EPISODE END REASON (RETIRED) renamed from MIDWIFE EPISODE END REASON	Changed status to Retired, Name, Description
NON ROUTINE RECALL INTERVAL (RETIRED) renamed from NON ROUTINE RECALL INTERVAL	Changed status to Retired, Name, Description
OCCUPIED BED DAYS NHS PATIENTS (RETIRED) renamed from OCCUPIED BED DAYS NHS PATIENTS	Changed status to Retired, Name, Description
OCCUPIED BED DAYS NON-NHS PATIENTS (RETIRED) renamed from OCCUPIED BED DAYS NON-NHS PATIENTS	Changed status to Retired, Name, Description
OFFER OF ADMISSION GROUP IDENTIFIER (RETIRED) renamed from OFFER OF ADMISSION GROUP IDENTIFIER	Changed status to Retired, Name, Description
OPHTHALMIC MEDICAL PRACTITIONER END DATE (RETIRED) renamed from OPHTHALMIC MEDICAL PRACTITIONER END DATE	Changed status to Retired, Name, Description
OPHTHALMIC MEDICAL PRACTITIONER START DATE (RETIRED) renamed from OPHTHALMIC MEDICAL PRACTITIONER START DATE	Changed status to Retired, Name, Description
OPHTHALMIC QUALIFICATION COMMITTEE CODE (RETIRED) renamed from OPHTHALMIC QUALIFICATION COMMITTEE CODE	Changed status to Retired, Name, Description
OPTICIAN PREMISES TYPE (RETIRED)	Changed Description
ORGANISATION SITE BED AVAILABILITY END DATE (RETIRED)	Changed Description
ORGANISATION SITE BED AVAILABILITY START DATE (RETIRED)	Changed Description
ORGANISATION SITE BED OCCUPANCY END DATE (RETIRED) renamed from ORGANISATION SITE BED OCCUPANCY END DATE	Changed status to Retired, Name, Description
ORGANISATION SITE BED OCCUPANCY START DATE (RETIRED) renamed from ORGANISATION SITE BED OCCUPANCY START DATE	Changed status to Retired, Name, Description
ORGANISATION SITE CLASSIFICATION (RETIRED)	Changed Description
PAYMENT FROM PATIENT RECEIVED (RETIRED) renamed from PAYMENT FROM PATIENT RECEIVED	Changed status to Retired, Name, Description
PREGNANCY LEAD PROFESSIONAL TYPE (RETIRED) renamed from PREGNANCY LEAD PROFESSIONAL TYPE	Changed status to Retired, Name, Description
PREVIOUS PROVIDER OFFERED ADMISSION DATE (RETIRED) renamed from PREVIOUS PROVIDER OFFERED ADMISSION DATE	Changed status to Retired, Name, Description
REFERRAL STATUS (RETIRED) renamed from REFERRAL STATUS	Changed status to Retired, Name, Description
REFERRAL STATUS DATE (RETIRED) renamed from REFERRAL STATUS DATE	Changed status to Retired, Name, Description
REFUGEE OR STATELESS PERSON INDICATOR (RETIRED) renamed from REFUGEE OR STATELESS PERSON INDICATOR	Changed status to Retired, Name, Description
SCREENING CONDITION OR DISEASE (RETIRED) renamed from SCREENING CONDITION OR DISEASE	Changed status to Retired, Name, Description
SELF-REFERRAL OR OPEN ACCESS (RETIRED) renamed from SELF-REFERRAL OR OPEN ACCESS	Changed status to Retired, Name, Description
SIGHT TEST DOMICILIARY VISIT TYPE (RETIRED)	Changed Description
SIGHT TEST FORM COMPLETED (RETIRED)	Changed Description
SIGHT TEST PERSON SUBSIDY TYPE (RETIRED)	Changed Description
UNWANTED MEDICINE SCHEME INDICATOR (RETIRED) renamed from UNWANTED MEDICINE SCHEME INDICATOR	Changed status to Retired, Name, Description

Data Elements

BROAD PATIENT GROUP CODE (RETIRED) renamed from BROAD PATIENT GROUP CODE	Changed status to Retired, Name, Description, linked Attribute
--	--

ELECTORAL WARD OF USUAL ADDRESS (RETIRED) renamed
from ELECTORAL WARD OF USUAL ADDRESS
GENERAL MEDICAL PRACTICE CODE (PATIENT REGISTRATION)

Changed status to Retired, Name,
Description
Changed Description

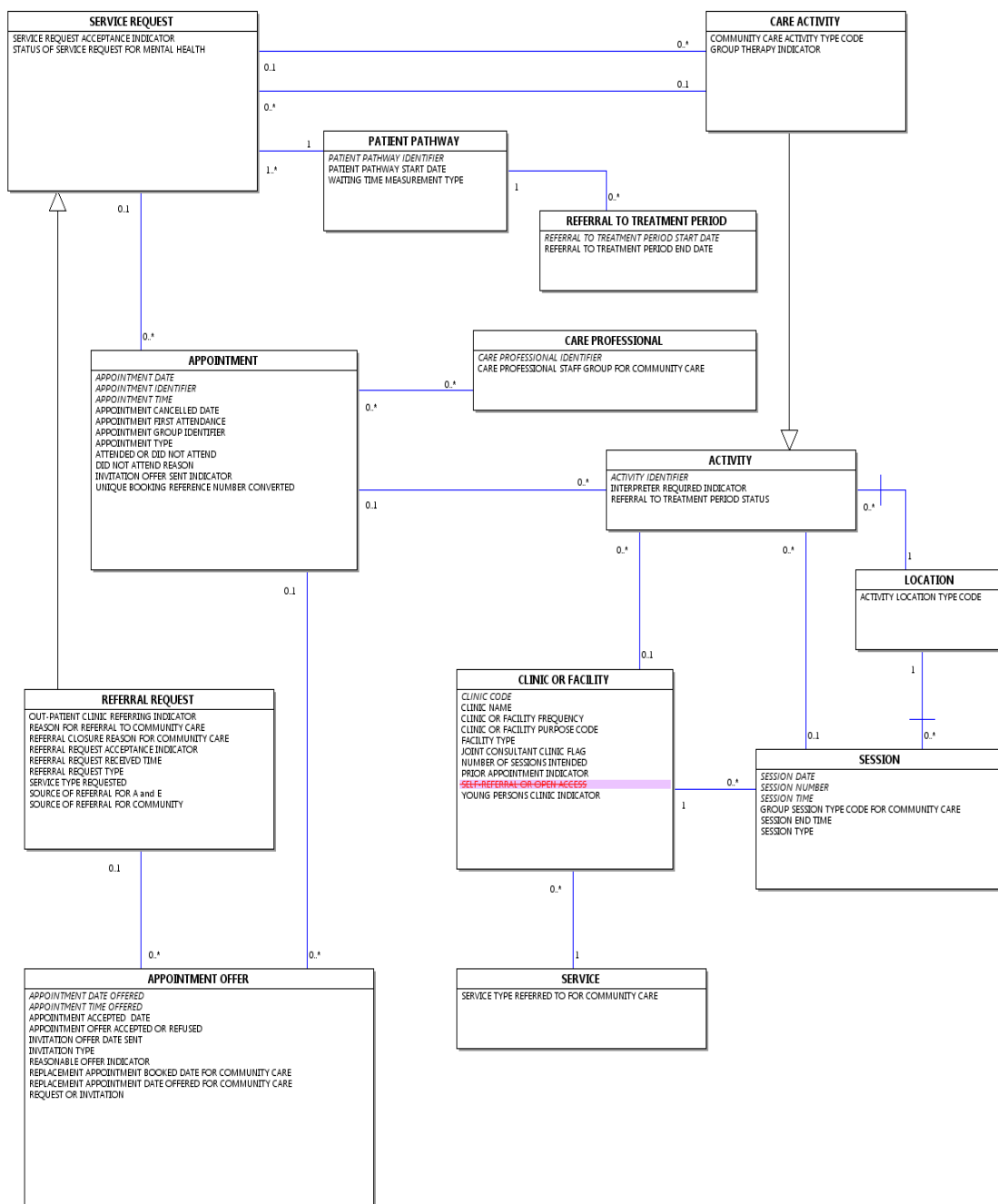
Date: 26 February 2014

Sponsor: Dr K. Lunn, Director of Information Standards Delivery. Health and Social Care Information Centre

Note: New text is shown with a blue background. Deleted text is crossed out. Retired text is shown in grey.
Within the Diagrams deleted classes and relationships are red, changed items are blue and new items are green.

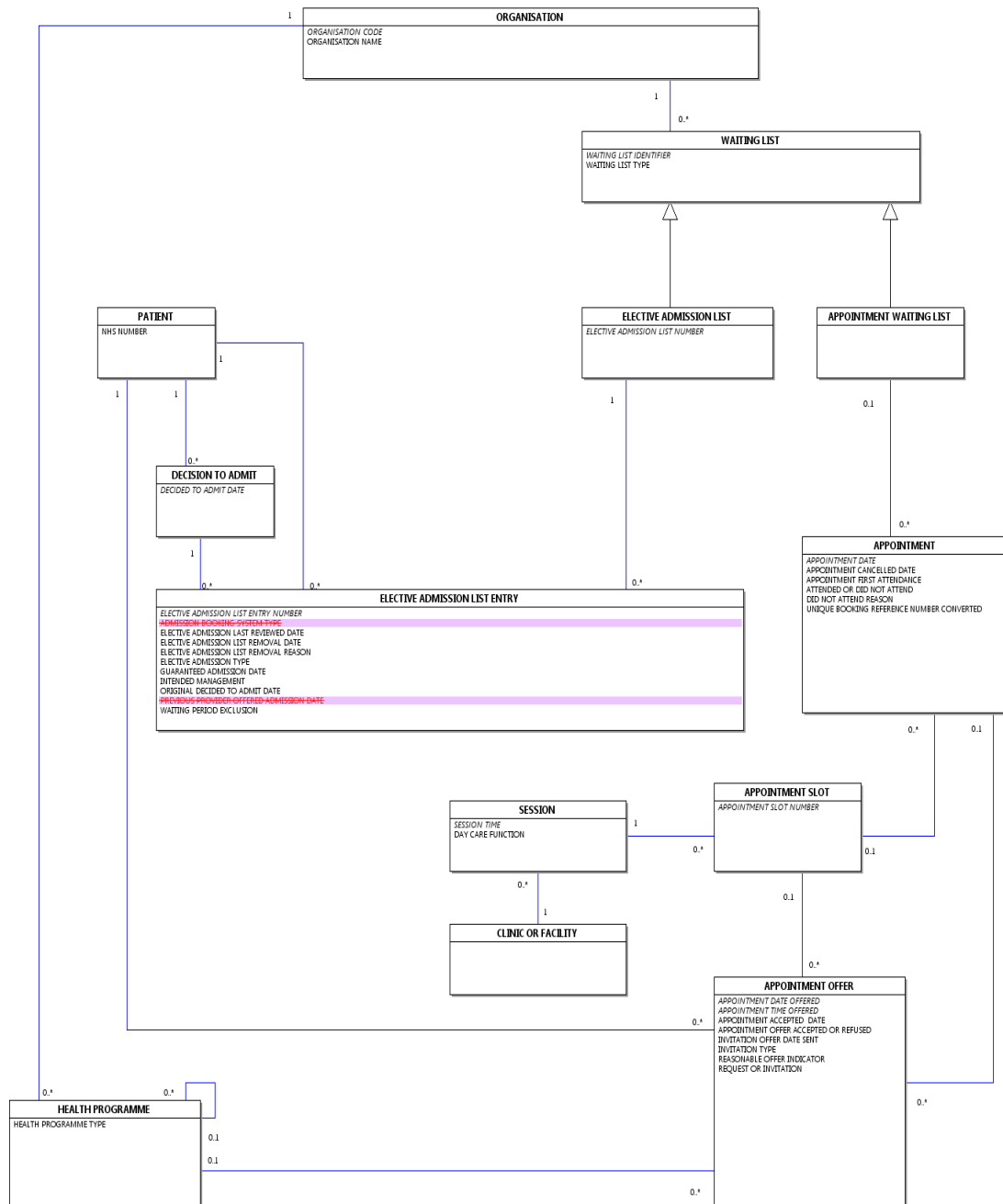
COMMUNITY DIAGRAM

Change to Diagram: Changed Diagram



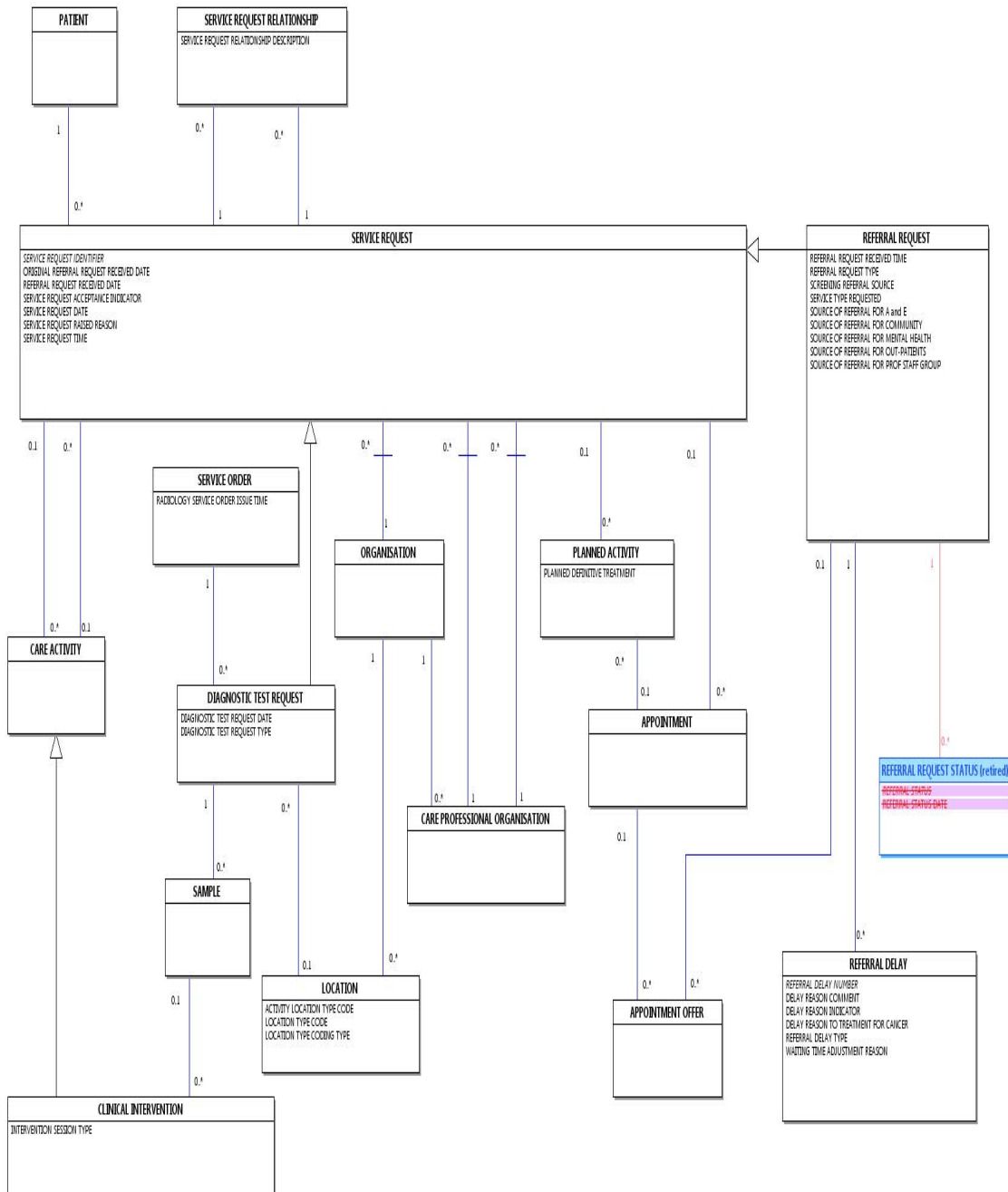
LISTS DIAGRAM

Change to Diagram: Changed Diagram



REFERRAL REQUEST DIAGRAM

Change to Diagram: Changed Diagram



CATCHMENT AREA (RETIRED)_ renamed from CATCHMENT AREA

Change to Supporting Information: Changed status to Retired, Name, Description

A ~~Catchment Area~~ is a ~~GEOGRAPHIC AREA~~. This item has been retired from the NHS Data Model and Dictionary.

A ~~Catchment Area~~ is the area and population from which a town, city or individual service attracts visitors or customers. The last live version of this item is available in the February 2014 release of the NHS Data

Model and Dictionary.

For example: Access to this version can be obtained by emailing information.standards@hscic.gov.uk with "NHS Data Model and Dictionary - Archive Request" in the email subject line.

- a [School Catchment Area](#) is the [GEOGRAPHIC AREA](#) from which students are eligible to attend a local [School](#)
- a [Primary Care Trust Catchment Area](#) is the [GEOGRAPHIC AREA](#) served by a [Primary Care Trust](#) etc.

CATCHMENT AREA (RETIRED)_ renamed from CATCHMENT AREA

Change to Supporting Information: Changed status to Retired, Name, Description

- Retired Catchment Area
- Changed Name from Data_Dictionary.NHS_Business_Definitions.C.Catchment_Area to Retired.Data_Dictionary.NHS_Business_Definitions.C.Catchment_Area
- Changed Description

CONTACT TRACING PROGRAMME (RETIRED)

Change to Supporting Information: Changed Description

This item has been retired from the NHS Data Model and Dictionary.

~~The last live version of this item is available in the February 2014 release of the NHS Data Model and Dictionary.~~ The last live version of this item is available in the February 2014 release of the NHS Data Model and Dictionary.

Access to this version can be obtained by emailing information.standards@hscic.gov.uk with "NHS Data Model and Dictionary - Archive Request" in the email subject line.

ELECTORAL WARD (RETIRED)_ renamed from ELECTORAL WARD

Change to Supporting Information: Changed status to Retired, Name, Description

An [Electoral Ward](#) is a [GEOGRAPHIC AREA](#). This item has been retired from the NHS Data Model and Dictionary.

~~[Electoral Wards](#) are the base unit of United Kingdom administrative geography such that all higher units are built up from them. They are also used as a base unit for many other geographies such as parliamentary constituencies and [Primary Care Trusts \(PCTs\)](#).~~ The last live version of this item is available in the February 2014 release of the NHS Data Model and Dictionary.

For further information on [Electoral Wards](#), see the [Office for National Statistics website](#). Access to this version can be obtained by emailing information.standards@hscic.gov.uk with "NHS Data Model and Dictionary - Archive Request" in the email subject line.

ELECTORAL WARD (RETIRED)_ renamed from ELECTORAL WARD

Change to Supporting Information: Changed status to Retired, Name, Description

- Retired Electoral Ward
- Changed Name from Data_Dictionary.NHS_Business_Definitions.E.Electoral_Ward to Retired.Data_Dictionary.NHS_Business_Definitions.E.Electoral_Ward
- Changed Description

FACE TO FACE CONTACT OPTICAL (RETIRED)

Change to Supporting Information: Changed Description

This item has been retired from the NHS Data Model and Dictionary.

~~The last live version of this item is available in the February 2014 release of the NHS Data Model and Dictionary.~~ The last live version of this item is available in the February 2014 release of the NHS Data Model and Dictionary.

Access to this version can be obtained by emailing information.standards@hscic.gov.uk with "NHS Data Model and Dictionary - Archive Request" in the email subject line.

HEALTH PROMOTION TARGET POPULATION (RETIRED)__ renamed from HEALTH PROMOTION TARGET POPULATION

Change to Supporting Information: Changed status to Retired, Name, Description

~~Health Promotion Target Population~~ is a ~~HEALTH PROGRAMME POPULATION~~. This item has been retired from the NHS Data Model and Dictionary.

One of the target group populations towards which a ~~Health Promotion Programme~~ HIV and AIDS is aimed. Each population will belong to a single health promotion target group. The last live version of this item is available in the February 2014 release of the NHS Data Model and Dictionary.

Access to this version can be obtained by emailing information.standards@hscic.gov.uk with "NHS Data Model and Dictionary - Archive Request" in the email subject line.

HEALTH PROMOTION TARGET POPULATION (RETIRED)__ renamed from HEALTH PROMOTION TARGET POPULATION

Change to Supporting Information: Changed status to Retired, Name, Description

- Retired Health Promotion Target Population
- Changed Name from Data_Dictionary.NHS_Business_Definitions.H.Health_Promotion_Target_Population to Retired.Data_Dictionary.NHS_Business_Definitions.H.Health_Promotion_Target_Population
- Changed Description

LISTS DIAGRAM OVERVIEW

Change to Supporting Information: Changed Description

The [Lists Diagram](#) depicts the management of [WAITING LISTS](#) by an [ORGANISATION](#). This includes the subtypes ~~APPOINTMENT WAITING LISTS~~, ~~ELECTIVE ADMISSION LISTS~~ and ~~PRIOR NOTIFICATION LISTS FOR~~

[CYTOLOGIES](#) and how they are related to the delivery of an [ACTIVITY](#) for a [PATIENT](#). This includes the subtypes [APPOINTMENT WAITING LISTS](#) and [ELECTIVE ADMISSION LISTS](#) and how they are related to the delivery of an [ACTIVITY](#) for a [PATIENT](#).

Related diagrams include:

- [Activity](#)
- [Appointments](#)
- [Care Professional](#)
- [Health Programme](#)
- [Organisation](#)
- [Referral Request](#)

USING THE DIAGRAM

By clicking on a Class on the diagram opposite, the selected Class definition will be displayed. By clicking on an Attribute name displayed within the Class, the selected Attribute definition will be displayed.

Note that not all attributes for a class will be visible. The full list of attributes for a class can be viewed in the class definition, by selecting the 'Attribute' tab.

To view the diagram in full, select the 'Print Window' option, this will open a new window that will display only the diagram. You can also use this view to print the diagram, by right clicking on the diagram and selecting 'Print Picture'.

MIDWIFE EPISODE

Change to Supporting Information: Changed Description

A [Midwife Episode](#) is an [ACTIVITY GROUP](#).

A [Midwife Episode](#) is a continuous period of time a [PATIENT](#) uses a [Hospital Bed](#) or delivery facility as part of a [Hospital Provider Spell](#) or [Care Home Stay \(Midwife Care\)](#), under the direct care of a [MIDWIFE](#). This may be during a [Pregnancy Episode](#) or [Labour and Delivery](#) for the mother but may also be for a baby following a [REGISTRABLE BIRTH](#).

The [MIDWIFE](#) with overall responsibility for a [Midwife Episode](#) must be identified. If the responsible [MIDWIFE](#) changes then a new [Midwife Episode](#) or [Consultant Episode \(Hospital Provider\)](#) begins.

General medical care during the [Midwife Episode](#) is the responsibility of the [PATIENTS](#) own [GENERAL MEDICAL PRACTITIONER](#) who is acting as a [CONSULTANT](#).

Information recorded for a [Midwife Episode](#) includes:

[Start Date](#)

[End Date](#) ⊖

[MIDWIFE EPISODE END REASON](#) ⊖

PERSON IN A CONTACT TRACING PROGRAMME (RETIRED)

Change to Supporting Information: Changed Description

This item has been retired from the NHS Data Model and Dictionary.

~~The last live version of this item is available in the February 2014 release of the NHS Data Model and Dictionary.~~The last live version of this item is available in the February 2014 release of the NHS Data Model and Dictionary.

Access to this version can be obtained by emailing information.standards@hscic.gov.uk with "NHS Data Model and Dictionary - Archive Request" in the email subject line.

PERSON NATIONALITY OR RESIDENCY STATUS (RETIRED)_ renamed from PERSON NATIONALITY OR RESIDENCY STATUS

Change to Supporting Information: Changed status to Retired, Name, Description

~~Person Nationality or Residency Status~~ provides further guidance on ~~NATIONALITY OR RESIDENCY~~.This item has been retired from the NHS Data Model and Dictionary.

An association of a ~~PERSON~~ with an overseas country of which they are a national and/or a resident.The last live version of this item is available in the February 2014 release of the NHS Data Model and Dictionary.

Access to this version can be obtained by emailing information.standards@hscic.gov.uk with "NHS Data Model and Dictionary - Archive Request" in the email subject line.

PERSON NATIONALITY OR RESIDENCY STATUS (RETIRED)_ renamed from PERSON NATIONALITY OR RESIDENCY STATUS

Change to Supporting Information: Changed status to Retired, Name, Description

- Retired Person Nationality or Residency Status
- Changed

	Name	from
Data_Dictionary.NHS_Business_Definitions.P.Person_Nationality_or_Residency_Status		to
Retired.Data_Dictionary.NHS_Business_Definitions.P.Person_Nationality_or_Residency_Status		
- Changed Description

PROFESSIONAL ADVICE AND SUPPORT CONTACT (RETIRED)

Change to Supporting Information: Changed Description

This item has been retired from the NHS Data Model and Dictionary.

~~The last live version of this item is available in the February 2014 release of the NHS Data Model and Dictionary.~~The last live version of this item is available in the February 2014 release of the NHS Data Model and Dictionary.

Access to this version can be obtained by emailing information.standards@hscic.gov.uk with "NHS Data Model and Dictionary - Archive Request" in the email subject line.

SIGHT TEST (RETIRED)

Change to Supporting Information: Changed Description

This item has been retired from the NHS Data Model and Dictionary.

~~The last live version of this item is available in the February 2014 release of the NHS Data Model and Dictionary.~~ The last live version of this item is available in the February 2014 release of the NHS Data Model and Dictionary.

Access to this version can be obtained by emailing information.standards@hscic.gov.uk with "NHS Data Model and Dictionary - Archive Request" in the email subject line.

BROAD PATIENT GROUP

Change to Class: Changed Relationships

Each BROAD PATIENT GROUP

may be a classifier for one or more ACTIVITY GROUP

~~may be the classifier for one or more ORGANISATION SITE BED OCCUPANCY~~

may be the classifier for one or more WARD OPERATIONAL PLAN

CARE CONTACT

Change to Class: Changed Attributes

Attributes of this Class are:

A and E ATTENDANCE CATEGORY

A and E INITIAL ASSESSMENT TRIAGE CATEGORY

A and E STREAM

ACCIDENT AND EMERGENCY ARRIVAL MODE

ACCIDENT AND EMERGENCY ATTENDANCE DISPOSAL

ACUTE HOME-BASED TELEPHONE CONTACT

ANTIRETROVIRAL THERAPY HOME DELIVERY INDICATOR

ANTIRETROVIRAL THERAPY REGIMEN GROUP CODE

BRIEF INTERVENTION PROVIDED INDICATOR

BRIEF INTERVENTION TYPE FOR NHS HEALTH CHECK

CARE CONTACT SERVICE TYPE FOR CHILDREN AND YOUNG PEOPLES HEALTH SERVICE SECONDARY USES

CARE CONTACT SUBJECT

CARE CONTACT TYPE

CARE CONTACT TYPE FOR CHILDREN AND YOUNG PEOPLES HEALTH SERVICE SECONDARY USES

CHILD DIFFICULT TO TEST REASON

CLINICAL NURSE SPECIALIST INDICATION CODE

CLINIC ATTENDANCE PURPOSE CODE FOR HIV

COLPOSCOPY PRIME PROCEDURE TYPE

CONSULTATION MEDIUM USED

CONTRACEPTIVE SERVICE TYPE

DECISION TO UNDERTAKE FURTHER ASSESSMENT INDICATOR

DIETARY ADVICE REASON CODE

EMPLOYMENT SUPPORT SUITABILITY INDICATOR

FIRST ANTIRETROVIRAL THERAPY IN THE UNITED KINGDOM INDICATOR

FIRST ATTENDANCE

FURTHER ASSESSMENT TYPE FOR NHS HEALTH CHECK

INFORMATION AND ADVICE PROVIDED INDICATOR

INFORMATION AND ADVICE TYPE PROVIDED FOR NHS HEALTH CHECK

INITIAL CONTACT
INITIAL DIAGNOSIS CARE SETTING FOR HIV
IUD APPLICATION DATE
MATERNITY VISIT CALL REASON
MEDICAL STAFF TYPE SEEING PATIENT
METASTATIC STATUS
MULTIPROFESSIONAL OR MULTIDISCIPLINARY INDICATION CODE
NEW HIV DIAGNOSIS IN UNITED KINGDOM INDICATOR
OUTCOME OF ATTENDANCE
OUTCOME OF ATTENDANCE FOR CHILDREN AND YOUNG PEOPLES HEALTH SERVICE SECONDARY USES
PATIENT EXPOSURE TO HIV
PATIENT HIV CARE STATUS
PATIENT INFORMED OF OUTCOME DATE
PATIENT TRIAL STATUS FOR CANCER
~~PAYMENT FROM PATIENT RECEIVED~~
POST AND/OR PRE EXPOSURE PROPHYLAXIS CODE
POSTNATAL CARE INDICATOR
PREGNANCY INDICATOR FOR HIV
PSYCHIATRIC CARE INDICATOR FOR HIV
SETTLED ACCOMMODATION INDICATOR
SIGNPOSTING TO SERVICE INDICATOR
SIGNPOSTING TO SERVICE TYPE FOR NHS HEALTH CHECK
SKIN TO SKIN CONTACT INDICATOR
SOCIAL WORKER CARE INDICATOR FOR HIV
STATUTORY ASSESSMENT TYPE
SUBJECTIVE GLOBAL ASSESSMENT
THERAPY TYPE FOR IMPROVING ACCESS TO PSYCHOLOGICAL THERAPIES
TWO YEAR NEONATAL OUTCOMES ASSESSMENT NOT CARRIED OUT REASON

CLINICAL INTERVENTION

Change to Class: Changed Attributes

Attributes of this Class are:

ABDOMINAL XRAY PERFORMED REASON
ABDOMINAL XRAY PERFORMED TO INVESTIGATE ABDOMINAL SIGNS INDICATOR
ABLATIVE THERAPY TYPE
ACCIDENT AND EMERGENCY INVESTIGATION
ACCIDENT AND EMERGENCY TREATMENT
ANAESTHESIA TYPE IN LABOUR AND DELIVERY
ANAESTHETIC METHOD TYPE FOR DIALYSIS ACCESS CONSTRUCTION
ANAESTHETIC TYPE FOR JOINT REPLACEMENT
ANTI CANCER REGIMEN NUMBER
ARTERIOVENOUS GRAFT MATERIAL TYPE
ARTIFICIAL RUPTURE OF MEMBRANES REASON CODE
ASA PHYSICAL STATUS CLASSIFICATION SYSTEM CODE
ASSOCIATED PROCEDURE TYPE FOR ANKLE REPLACEMENT
BILIARY STENT INSERTION REASON
BIOLOGICAL RESURFACING TYPE
BLOOD FLOW RATE
BLOOD TRANSFUSION PRODUCT TYPE
BLOOD TRANSFUSION TYPE
BLOOD TRANSFUSION UNITS TRANSFUSED

BONEGRAFT INDICATOR FOR JOINT REPLACEMENT
BONEGRAFT INDICATOR FOR REVISION ANKLE REPLACEMENT
BONEGRAFT TYPE FOR JOINT REPLACEMENT
BRACHYTHERAPY TYPE
BREAST ASSESSMENT OUTCOME
BREAST SCREENING TEST OUTCOME
CANCER IMAGING MODALITY
CANCER TREATMENT MODALITY
CHEMICAL THROMBO PROPHYLAXIS REGIME TYPE
CHEMO RADIATION INDICATOR
CHEMOTHERAPY ACTUAL DOSE
CHEST DRAIN IN SITU INDICATOR
CLINICAL INTERVENTION TYPE
CLINICAL INVESTIGATION NOT PERFORMED REASON CODE FOR MATERNITY
CO MORBIDITY ADJUSTMENT INDICATOR
COMPLICATION TYPE FOR RENAL DIALYSIS ACCESS
COMPONENT REMOVAL INDICATOR
CONTINUOUS INFUSION OF PULMONARY VASODILATOR RECEIVED INDICATOR
CONTINUOUS POSITIVE AIRWAY PRESSURE DELIVERY MODE
CONTRACEPTION METHOD STATUS
CYTOLOGY SCREENING ACTION TYPE
DELIVERED IN WATER INDICATOR
DELIVERY INSTRUMENT TYPE
DELIVERY OF PLACENTA METHOD
DRUG ADMINISTRATION DURATION
DRUG ADMINISTRATION STATUS
DRUG DAYS SUPPLY
DRUG DOSAGE AND ADMIN SPECIFICATION
DRUG IDENTIFICATION
DRUG INFORMATION COMMENT
DRUG INFORMATION TYPE
DRUG QUANTITY SUPPLIED
DRUG REGIMEN ACRONYM
~~DRUG TREATMENT COST~~
DRUG TREATMENT INTENT
ENDOSCOPIC OR RADIOLOGICAL COMPLICATION TYPE
ENDOSCOPIC PROCEDURE TYPE
ENTERAL FEEDING METHOD
ENTERAL FEED TYPE GIVEN
EPISIOTOMY PERFORMED REASON CODE
EXCISION TYPE
FETAL ORDER
FIRST DEFINITIVE TREATMENT PROVIDED
FIRST DIAGNOSTIC TEST
FIXATION TYPE FOR ELBOW OR SHOULDER REPLACEMENT
FORMULA MILK OR MILK FORTIFIER TYPE
FRACTION NUMBER
HIP SURGERY PATIENT POSITION
IMAGE GUIDED SURGERY INDICATOR
IMAGING ANATOMICAL SITE
IMAGING INTERVENTION INDICATOR
IMAGING MODALITY
IMAGING OR RADIODIAGNOSTIC EVENT INDICATION CODE FOR RENAL CARE
IMMUNITY TEST RESULT

INFECTION CULTURE TEST INDICATOR
INTERVENTION SESSION TYPE
INTRAPARTUM ANTIBIOTICS GIVEN INDICATOR
JOINT REPLACEMENT REVISION REASON CODE FOR ANKLE
JOINT REPLACEMENT REVISION REASON CODE FOR ELBOW
JOINT REPLACEMENT REVISION REASON CODE FOR HIP
JOINT REPLACEMENT REVISION REASON CODE FOR KNEE
JOINT REPLACEMENT REVISION REASON CODE FOR SHOULDER
KIDNEY TRANSPLANTED CODE
LABOUR FIRST STAGE LENGTH
LABOUR OR DELIVERY ONSET METHOD
~~LABOUR PROFESSIONAL PRIOR INVOLVEMENT~~
LABOUR SECOND STAGE LENGTH
LAPAROTOMY FOR NECROTISING ENTEROCOLITIS INDICATION CODE
LONG HEAD BICEPS TENOTOMY INDICATOR
MARGIN INVOLVED INDICATION CODE
MATERNAL CRITICAL INCIDENT TYPE CODE
MECHANICAL THROMBO PROPHYLAXIS REGIME TYPE
MINIMALLY INVASIVE SURGERY INDICATOR
MINOR SURGERY TYPE
MORE THAN THREE RECTAL WASHOUTS RECEIVED INDICATOR
NATURE OF RISK AREA CODE
NEOADJUVANT THERAPY INDICATOR
NEONATAL CRITICAL INCIDENT TYPE CODE
NEONATAL RESUSCITATION METHOD
NEONATAL RESUSCITATION METHOD FOR NATIONAL NEONATAL DATA SET
NEPHRECTOMY TYPE
NEURODEVELOPMENTAL ASSESSMENT ALREADY TAKEN INDICATOR
NEWBORN HEARING INCOMPLETE REASON CODE
NEWBORN HEARING SCREENING TEST TYPE
NITRIC OXIDE GIVEN INDICATOR
NUMBER OF TELETHERAPY FIELDS
OPERATIVE PROCEDURE INDICATOR
OPPORTUNISTIC SCREENING TYPE
PAIN RELIEF TYPE IN LABOUR AND DELIVERY
PARENTAL CONSENT TO ADMINISTER VITAMIN K INDICATOR
PARENTAL CONSENT TO POST MORTEM INDICATOR
PARENTERAL NUTRITION RECEIVED INDICATOR
PATHOLOGY INVESTIGATION PRIORITY
PATHOLOGY RESULT REPORTED DATE
PATIENT PROCEDURE PERFORMED INDICATOR
PATIENT PROCEDURE TYPE FOR PRIMARY ANKLE REPLACEMENT
PATIENT PROCEDURE TYPE FOR PRIMARY ELBOW REPLACEMENT
PATIENT PROCEDURE TYPE FOR PRIMARY HIP REPLACEMENT
PATIENT PROCEDURE TYPE FOR PRIMARY KNEE REPLACEMENT
PATIENT PROCEDURE TYPE FOR PRIMARY SHOULDER REPLACEMENT
PATIENT PROCEDURE TYPE FOR REVISION ANKLE REPLACEMENT
PATIENT PROCEDURE TYPE FOR REVISION ELBOW REPLACEMENT
PATIENT PROCEDURE TYPE FOR REVISION HIP REPLACEMENT
PATIENT PROCEDURE TYPE FOR REVISION KNEE REPLACEMENT
PATIENT PROCEDURE TYPE FOR REVISION SHOULDER REPLACEMENT
PERFORATIONS OR SEROSAL INVOLVEMENT INDICATION CODE
PERITONEAL DIALYSIS CATHETER INSERTION TECHNIQUE
PERITONEAL DIALYSIS CATHETER TYPE

PLANE OF SURGICAL EXCISION TYPE
PLANNED TREATMENT CHANGE REASON
POST MORTEM CARRIED OUT INDICATOR
POST MORTEM CONFIRMED NECROTISING ENTEROCOLITIS DIAGNOSIS INDICATOR
POST MORTEM TYPE
PREVIOUS BONY INFECTION INDICATOR OF TIBIA OR HINDFOOT
PREVIOUS FRACTURE INDICATOR FOR ANKLE REPLACEMENT
PREVIOUS SURGERY TYPE FOR ANKLE JOINT
PREVIOUS SURGERY TYPE FOR SHOULDER REPLACEMENT
PRIMARY SCREENING
PRINCIPAL DIAGNOSTIC IMAGING TYPE
PROCEDURE RENAL DIALYSIS ACCESS REPAIR OR REVISION TYPE
PROCEDURE SIDE RENAL DIALYSIS ACCESS CONSTRUCTION CODE
PROCEDURE SITE RENAL DIALYSIS ACCESS CONSTRUCTION CODE
RADIOISOTOPE
RADIOLOGICAL PROCEDURE TYPE
RADIOTHERAPY ACTUAL DOSE
RADIOTHERAPY BEAM TYPE
RADIOTHERAPY PRESCRIBED DOSE
RADIOTHERAPY TREATMENT MODALITY
REMOVAL REASON TYPE FOR DIALYSIS ACCESS
RENAL DIALYSIS ACCESS TYPE
RENAL TRANSPLANT FAILURE CAUSE CODE
REPLOGLE TUBE IN SITU INDICATOR
RESPIRATORY SUPPORT DEVICE TYPE FOR NATIONAL NEONATAL DATA SET
RESPIRATORY SUPPORT MODE FOR NATIONAL NEONATAL DATA SET
RESULT SENT DIRECT
RETINOPATHY OF PREMATURITY SCREENING OUTCOME STATUS CODE
REVISION PROCEDURE TYPE FOR ANKLE OR KNEE REPLACEMENT
REVISION PROCEDURE TYPE FOR ELBOW OR SHOULDER REPLACEMENT
REVISION PROCEDURE TYPE FOR HIP REPLACEMENT
ROTATOR CUFF CONDITION
ROUTINE OR EMERGENCY
RUPTURE OF MEMBRANES METHOD
SARCOMA SURGICAL MARGIN
SCHEDULED SESSION DURING OR OUTSIDE
SENTINEL LYMPH NODE BIOPSY TYPE
SIGNIFICANT MATERNAL PYREXIA IN LABOUR INDICATOR
STEM CELL INFUSION DONOR TYPE
STEM CELL INFUSION SOURCE CODE
STENT DEPLOYED SUCCESS INDICATOR
STEROIDS GIVEN DURING PREGNANCY TO MATURE FETAL LUNGS INDICATOR
STOMA PRESENT INDICATOR
SURGICAL ACCESS TYPE
SURGICAL ACCESS TYPE FOR THORACIC
SURGICAL APPROACH FOR PRIMARY HIP REPLACEMENT
SURGICAL APPROACH FOR PRIMARY KNEE REPLACEMENT
SURGICAL APPROACH FOR PRIMARY OR REVISION ANKLE REPLACEMENT
SURGICAL APPROACH FOR PRIMARY OR REVISION SHOULDER REPLACEMENT
SURGICAL APPROACH FOR REVISION HIP REPLACEMENT
SURGICAL APPROACH FOR REVISION KNEE REPLACEMENT
SURGICAL COMPLICATION TYPE
SURGICAL DEFAULT TECHNIQUE INDICATOR
SURGICAL PALLIATION TYPE

SURGICAL VOICE RESTORATION PERMANENT VALVE REMOVAL REASON
SYSTEMIC ANTI CANCER THERAPY DRUG ROUTE OF ADMINISTRATION
SYSTEMIC ANTI CANCER THERAPY PROGRAMME NUMBER
SYSTEMIC ANTI CANCER THERAPY REGIMEN MODIFICATION INDICATOR
TELEOTHERAPY BEAM TYPE
TELEOTHERAPY ELECTRON ENERGY
TELEOTHERAPY PHOTON ENERGY
TRACHEOSTOMY TUBE IN SITU INDICATOR
TREATMENT TYPE FOR NECROTISING ENTEROCOLITIS
TREATMENT TYPE FOR PATENT DUCTUS ARTERIOSUS
UNPLANNED OPERATION INDICATOR
UNTOWARD INTRAOPERATIVE EVENT CODE FOR ANKLE REPLACEMENT
UNTOWARD INTRAOPERATIVE EVENT CODE FOR ELBOW REPLACEMENT
UNTOWARD INTRAOPERATIVE EVENT CODE FOR HIP REPLACEMENT
UNTOWARD INTRAOPERATIVE EVENT CODE FOR KNEE REPLACEMENT
UNTOWARD INTRAOPERATIVE EVENT CODE FOR SHOULDER REPLACEMENT
VASCULAR LINE TYPE IN SITU
VISUAL INSPECTION CONFIRMED NECROTISING ENTEROCOLITIS DURING LAPAROTOMY INDICATOR
VITAMIN K ADMINISTERED INDICATOR
VITAMIN K ROUTE OF ADMINISTRATION

CLINIC OR FACILITY

Change to Class: Changed Attributes

Attributes of this Class are:

K CLINIC CODE
CLINIC NAME
CLINIC OR FACILITY FREQUENCY
CLINIC OR FACILITY PURPOSE CODE
FACILITY TYPE
JOINT CONSULTANT CLINIC FLAG
NUMBER OF SESSIONS INTENDED
PRIOR APPOINTMENT INDICATOR
~~SELF-REFERRAL OR OPEN ACCESS~~
YOUNG PERSONS CLINIC INDICATOR

ELECTIVE ADMISSION LIST ENTRY

Change to Class: Changed Attributes

Attributes of this Class are:

K ELECTIVE ADMISSION LIST ENTRY NUMBER
~~ADMISSION BOOKING SYSTEM TYPE~~
ELECTIVE ADMISSION LAST REVIEWED DATE
ELECTIVE ADMISSION LIST REMOVAL DATE
ELECTIVE ADMISSION LIST REMOVAL REASON
ELECTIVE ADMISSION TYPE
GUARANTEED ADMISSION DATE
INTENDED MANAGEMENT
ORIGINAL DECIDED TO ADMIT DATE
~~PREVIOUS PROVIDER OFFERED ADMISSION DATE~~
WAITING PERIOD EXCLUSION

HEALTH PROGRAMME

Change to Class: Changed Attributes

Attributes of this Class are:

BREAST SCREENING AGE GROUP FOR KC62 PARTS 1 TO 3
BREAST SCREENING AGE GROUP FOR KC62 PARTS 4 TO 5
BREAST SCREENING AGE GROUP FOR KC63
BREAST SCREENING READING TYPE
CERVICAL SCREENING RECALL INTERVAL
COMMUNITY NURSE STAFF GROUP
HEALTH PROGRAMME TYPE
IMMUNISATION AGE GROUP
IMMUNISATION PROGRAMME TYPE
~~SCREENING CONDITION OR DISEASE~~
VACCINE PREVENTABLE DISEASE

OFFER OF ADMISSION

Change to Class: Changed Attributes

Attributes of this Class are:

K OFFERED FOR ADMISSION DATE
K OFFER OF ADMISSION MADE DATE
K OFFER OF ADMISSION MADE TIME
ADMISSION OFFER OUTCOME
OFFER OF ADMISSION ACCEPTED DATE
~~OFFER OF ADMISSION GROUP IDENTIFIER~~
OPERATION CANCELLATION
REASONABLE OFFER INDICATOR

OPHTHALMIC MEDICAL PRACTITIONER

Change to Class: Changed Attributes

Attributes of this Class are:

GENERAL MEDICAL COUNCIL REFERENCE NUMBER
~~OPHTHALMIC MEDICAL PRACTITIONER END DATE~~
~~OPHTHALMIC MEDICAL PRACTITIONER START DATE~~
~~OPHTHALMIC QUALIFICATION COMMITTEE CODE~~

ORGANISATION SITE

Change to Class: Changed Relationships, Attributes

Attributes of this Class are:

K ORGANISATION SITE CODE
ACCREDITED DATE
DECOMMISSIONED DATE
HIGH SECURITY PSYCHIATRIC ACCOMMODATION
ORGANISATION SITE END DATE
ORGANISATION SITE NAME
ORGANISATION SITE START DATE
ORGANISATION SITE TYPE
ORIGIN
OXYGEN SERVICE SUPPLIER INDICATOR

ORGANISATION SITE

Change to Class: Changed Relationships, Attributes

Each ORGANISATION SITE

- must be operated or managed by one and only one ORGANISATION
 - may be the location for one or more ACTIVITY
 - may be the treatment location for one or more ELECTIVE ADMISSION LIST ENTRY
 - may be vacated by one or more LEAVE
 - may be the owner of one or more ORGANISATION DEPARTMENT
 - may be the location of one and only one ORGANISATION REGISTRATION
 - ~~may be related to one or more ORGANISATION SITE BED OCCUPANCY~~
 - may be accessed by using one or more RIGHT OF ADMISSION
 - may be the location for one or more SESSION
 - may be subdivided into one or more WARD
-

ORGANISATION SITE BED OCCUPANCY (RETIRED)_ renamed from ORGANISATION SITE BED OCCUPANCY

Change to Class: Changed status to Retired, Name, Description, Attributes

The number of ~~Hospital Bed~~ days occupied in an ~~ORGANISATION SITE~~ during a period of time. **This item has been retired from the NHS Data Model and Dictionary.**

The last live version of this item is available in the February 2014 release of the NHS Data Model and Dictionary.

Access to this version can be obtained by emailing information.standards@hscic.gov.uk with "NHS Data Model and Dictionary - Archive Request" in the email subject line.

ORGANISATION SITE BED OCCUPANCY (RETIRED)_ renamed from ORGANISATION SITE BED OCCUPANCY

Change to Class: Changed status to Retired, Name, Description, Attributes

Attributes of this Class are:

- ~~ORGANISATION SITE BED OCCUPANCY START DATE~~
- ~~OCCUPIED BED DAYS NHS PATIENTS~~
- ~~OCCUPIED BED DAYS NON-NHS PATIENTS~~
- ~~ORGANISATION SITE BED OCCUPANCY END DATE~~

This class has no attributes.

ORGANISATION SITE BED OCCUPANCY (RETIRED)_ renamed from ORGANISATION SITE BED OCCUPANCY

Change to Class: Changed status to Retired, Name, Description, Attributes

- Retired ORGANISATION SITE BED OCCUPANCY
- Changed Name from Data_Dictionary.Classes.O.ORGANISATION_SITE_BED_OCCUPANCY to Retired.Data_Dictionary.Classes.O.ORGANISATION_SITE_BED_OCCUPANCY

- Changed Description
- Changed Attributes

PATIENT

Change to Class: Changed Attributes

Attributes of this Class are:

~~CARER PERMISSION DATE~~
CARER SUPPORT INDICATOR
COMMUNITY HEALTH INDEX NUMBER
DRUG MISUSE DATABASE NUMBER
DRUG MISUSER INJECTED EVER
DRUG MISUSER SHARED NEEDLE EVER
HEALTH AND CARE NUMBER
INJECTED IN LAST 4 WEEKS
LAST DISCHARGE DATE
NHS NUMBER
NHS NUMBER OLD
OVERSEAS VISITOR UK ARRIVAL DATE
~~REFUGEE OR STATELESS PERSON INDICATOR~~
RENAL REASON FOR NO TREATMENT CODE
RENAL REGISTRATION NUMBER
SCOTTISH RENAL REGISTRY NUMBER
SHARED NEEDLE OR SYRINGE IN LAST 4 WEEKS
YEAR OF FIRST KNOWN PSYCHIATRIC CARE

PRIOR NOTIFICATION LIST ENTRY (RETIRED)

Change to Class: Changed Description

This item has been retired from the NHS Data Model and Dictionary.

~~The last live version of this item is available in the February 2014 release of the NHS Data Model and Dictionary.~~ The last live version of this item is available in the February 2014 release of the NHS Data Model and Dictionary.

~~Access to this version can be obtained by emailing [information](#).~~ Access to this version can be obtained by emailing information.standards@hscic.gov.uk with "NHS Data Model and Dictionary - Archive Request" in the email subject line. uk with "NHS Data Model and Dictionary - Archive Request" in the email subject line.

PRIOR NOTIFICATION LIST FOR CYTOLOGY (RETIRED)

Change to Class: Changed Description

This item has been retired from the NHS Data Model and Dictionary.

~~The last live version of this item is available in the February 2014 release of the NHS Data Model and Dictionary.~~ The last live version of this item is available in the February 2014 release of the NHS Data Model and Dictionary.

~~Access to this version can be obtained by emailing [information](#).~~ Access to this version can be obtained

by emailing information.standards@hscic.gov.uk with "NHS Data Model and Dictionary - Archive Request" in the email subject line. uk with "NHS Data Model and Dictionary - Archive Request" in the email subject line.

REFERRAL REQUEST

Change to Class: Changed Relationships

Each REFERRAL REQUEST

- must be given one and only one ACTIVITY PRIORITY
- must be a request with a correspondence address at one and only one ADDRESS ASSOCIATION
- may be resultant in one or more APPOINTMENT OFFER
- may be classified by one and only one LOCAL SUB-SPECIALTY
- may be classified by one and only one PATHOLOGY INVESTIGATION TYPE
- may be subject to one or more REFERRAL DELAY
- ~~may be passing through one or more REFERRAL REQUEST STATUS~~

REFERRAL REQUEST STATUS (RETIRED)_ renamed from REFERRAL REQUEST STATUS

Change to Class: Changed status to Retired, Name, Description, Attributes

The status of a [REFERRAL REQUEST](#) for an [Out-Patient Appointment](#). This item has been retired from the NHS Data Model and Dictionary.

The last live version of this item is available in the February 2014 release of the NHS Data Model and Dictionary.

Access to this version can be obtained by emailing information.standards@hscic.gov.uk with "NHS Data Model and Dictionary - Archive Request" in the email subject line.

REFERRAL REQUEST STATUS (RETIRED)_ renamed from REFERRAL REQUEST STATUS

Change to Class: Changed status to Retired, Name, Description, Attributes

Attributes of this Class are:

⌘ REFERRAL STATUS
REFERRAL STATUS DATE

This class has no attributes.

REFERRAL REQUEST STATUS (RETIRED)_ renamed from REFERRAL REQUEST STATUS

Change to Class: Changed status to Retired, Name, Description, Attributes

- Retired REFERRAL REQUEST STATUS
- Changed Name from Data_Dictionary.Classes.R.REFERRAL_REQUEST_STATUS to Retired.Data_Dictionary.Classes.R.REFERRAL_REQUEST_STATUS
- Changed Description
- Changed Attributes

ADMISSION BOOKING SYSTEM TYPE (RETIRED)_ renamed from ADMISSION BOOKING SYSTEM TYPE

Change to Attribute: Changed status to Retired, Name, Description

~~A classification of the type of booking system used for the [PATIENTS](#) admission. In any booked system (partial or full) the [PATIENT](#) is given the choice of when to attend. In a partial booking system the [PATIENT](#) is given an indication of how long the wait will be and is contacted by the [Health Care Provider](#) at some point after the decision to admit to be given a choice of dates for the admission. In a full booking system the [PATIENT](#) should be given the opportunity to book an admission date within one working day of the [DECISION TO ADMIT](#).~~ **This item has been retired from the NHS Data Model and Dictionary.**

~~*Classification:*~~ **The last live version of this item is available in the February 2014 release of the NHS Data Model and Dictionary.**

- a. No [PATIENT](#) choice of dates offered for admission
- b. Partial booking system
- c. Full booking system

Access to this version can be obtained by emailing information.standards@hscic.gov.uk with "NHS Data Model and Dictionary - Archive Request" in the email subject line.

ADMISSION BOOKING SYSTEM TYPE (RETIRED)_ renamed from ADMISSION BOOKING SYSTEM TYPE

Change to Attribute: Changed status to Retired, Name, Description

- Retired ADMISSION BOOKING SYSTEM TYPE
- Changed Name from Data_Dictionary.Attributes.A.Add.ADMISSION_BOOKING_SYSTEM_TYPE to Retired.Data_Dictionary.Attributes.A.ADMISSION_BOOKING_SYSTEM_TYPE
- Changed Description

AVAILABLE BED DAYS NHS PATIENTS (RETIRED)

Change to Attribute: Changed Description

This item has been retired from the NHS Data Model and Dictionary.

~~The last live version of this item is available in the February 2014 release of the NHS Data Model and Dictionary.~~ **The last live version of this item is available in the February 2014 release of the NHS Data Model and Dictionary.**

Access to this version can be obtained by emailing information.standards@hscic.gov.uk with "NHS Data Model and Dictionary - Archive Request" in the email subject line.

AVAILABLE BED DAYS NON-NHS PATIENTS (RETIRED)

Change to Attribute: Changed Description

This item has been retired from the NHS Data Model and Dictionary.

~~The last live version of this item is available in the February 2014 release of the NHS Data Model and Dictionary.~~ **The last live version of this item is available in the February 2014 release of the NHS Data Model and Dictionary.**

Access to this version can be obtained by emailing information.standards@hscic.gov.uk with "NHS Data Model and Dictionary - Archive Request" in the email subject line.

CARER PERMISSION DATE (RETIRED)_ renamed from CARER PERMISSION DATE

Change to Attribute: Changed status to Retired, Name, Description

~~The date on which permission was given for details of [PATIENT](#)'s carer to be recorded.~~ **This item has been retired from the NHS Data Model and Dictionary.**

The last live version of this item is available in the February 2014 release of the NHS Data Model and Dictionary.

Access to this version can be obtained by emailing information.standards@hscic.gov.uk with "NHS Data Model and Dictionary - Archive Request" in the email subject line.

CARER PERMISSION DATE (RETIRED)_ renamed from CARER PERMISSION DATE

Change to Attribute: Changed status to Retired, Name, Description

- Retired CARER PERMISSION DATE
- Changed Name from Data_Dictionary.Attributes.C.Card.CARER_PERMISSION_DATE to Retired.Data_Dictionary.Attributes.C.CARER_PERMISSION_DATE
- Changed Description

CERVICAL SCREENING TEST STATUS (RETIRED)

Change to Attribute: Changed Description

This item has been retired from the NHS Data Model and Dictionary.

~~The last live version of this item is available in the February 2014 release of the NHS Data Model and Dictionary.~~ **The last live version of this item is available in the February 2014 release of the NHS Data Model and Dictionary.**

~~Access to this version can be obtained by emailing [information](#).~~ **Access to this version can be obtained by emailing information.standards@hscic.gov.uk with "NHS Data Model and Dictionary - Archive Request" in the email subject line.** ~~uk with "NHS Data Model and Dictionary - Archive Request" in the email subject line.~~

COMMUNITY PHARMACY SITE CLOSED DATE (RETIRED)

Change to Attribute: Changed Description

This item has been retired from the NHS Data Model and Dictionary.

~~The last live version of this item is available in the February 2014 release of the NHS Data Model and Dictionary.~~ **The last live version of this item is available in the February 2014 release of the NHS Data Model and Dictionary.**

Model and Dictionary.

Access to this version can be obtained by emailing information.standards@hscic.gov.uk with "NHS Data Model and Dictionary - Archive Request" in the email subject line.

COMMUNITY PHARMACY SITE OPENED DATE (RETIRED)

Change to Attribute: Changed Description

This item has been retired from the NHS Data Model and Dictionary.

~~The last live version of this item is available in the February 2014 release of the NHS Data Model and Dictionary.~~ The last live version of this item is available in the February 2014 release of the NHS Data Model and Dictionary.

Access to this version can be obtained by emailing information.standards@hscic.gov.uk with "NHS Data Model and Dictionary - Archive Request" in the email subject line.

CONTACT TRACING DISEASE TYPE (RETIRED)

Change to Attribute: Changed Description

This item has been retired from the NHS Data Model and Dictionary.

~~The last live version of this item is available in the February 2014 release of the NHS Data Model and Dictionary.~~ The last live version of this item is available in the February 2014 release of the NHS Data Model and Dictionary.

Access to this version can be obtained by emailing information.standards@hscic.gov.uk with "NHS Data Model and Dictionary - Archive Request" in the email subject line.

CYTOLOGY RECALL CEASE CODE (RETIRED)_ renamed from CYTOLOGY RECALL CEASE CODE

Change to Attribute: Changed status to Retired, Name, Description

~~The reason that a [GENERAL MEDICAL PRACTITIONER](#) has given to cease a cervical screening.~~ This item has been retired from the NHS Data Model and Dictionary.

~~Classification:~~ The last live version of this item is available in the February 2014 release of the NHS Data Model and Dictionary.

- a. Total hysterectomy for benign disease/No cervix
- b. Patient's informed request for no further smear tests
- c. Other reason

References:

~~GP - Health Authority Information Flows 1996.~~ Access to this version can be obtained by emailing information.standards@hscic.gov.uk with "NHS Data Model and Dictionary - Archive Request" in the

email subject line.

CYTOLOGY RECALL CEASE CODE (RETIRED)_ renamed from CYTOLOGY RECALL CEASE CODE

Change to Attribute: Changed status to Retired, Name, Description

- Retired CYTOLOGY RECALL CEASE CODE
- Changed Name from Data_Dictionary.Attributes.C.Cy.CYTOLOGY_RECALL_CEASE_CODE to Retired.Data_Dictionary.Attributes.C.CYTOLOGY_RECALL_CEASE_CODE
- Changed Description

CYTOLOGY RECALL DELAY CODE (RETIRED)_ renamed from CYTOLOGY RECALL DELAY CODE

Change to Attribute: Changed status to Retired, Name, Description

The reason that a ~~GENERAL MEDICAL PRACTITIONER~~ has given to delay cervical screening. **This item has been retired from the NHS Data Model and Dictionary.**

Classification: **The last live version of this item is available in the February 2014 release of the NHS Data Model and Dictionary.**

- a. Recent Test
- b. Current pregnancy
- c. Patient wish to defer
- d. Under treatment relevant to screening
- e. Never sexually active
- f. Other significant illness
- g. Other reason
- h. Practice Invitation

References:

~~GP - Health Authority Information Flows 1996~~ **Access to this version can be obtained by emailing information.standards@hscic.gov.uk with "NHS Data Model and Dictionary - Archive Request" in the email subject line.**

CYTOLOGY RECALL DELAY CODE (RETIRED)_ renamed from CYTOLOGY RECALL DELAY CODE

Change to Attribute: Changed status to Retired, Name, Description

- Retired CYTOLOGY RECALL DELAY CODE
- Changed Name from Data_Dictionary.Attributes.C.Cy.CYTOLOGY_RECALL_DELAY_CODE to Retired.Data_Dictionary.Attributes.C.CYTOLOGY_RECALL_DELAY_CODE
- Changed Description

CYTOLOGY SCREENING PLAN CUT OFF (RETIRED)

Change to Attribute: Changed Description

This item has been retired from the NHS Data Model and Dictionary.

~~The last live version of this item is available in the February 2014 release of the NHS Data Model and Dictionary.~~The last live version of this item is available in the February 2014 release of the NHS Data Model and Dictionary.

~~Access to this version can be obtained by emailing [information](#).~~Access to this version can be obtained by emailing information.standards@hscic.gov.uk with "NHS Data Model and Dictionary - Archive Request" in the email subject line.~~uk~~ with "NHS Data Model and Dictionary - Archive Request" in the email subject line.

CYTOLOGY SCREENING PLAN DATE (RETIRED)

Change to Attribute: Changed Description

This item has been retired from the NHS Data Model and Dictionary.

~~The last live version of this item is available in the February 2014 release of the NHS Data Model and Dictionary.~~The last live version of this item is available in the February 2014 release of the NHS Data Model and Dictionary.

~~Access to this version can be obtained by emailing [information](#).~~Access to this version can be obtained by emailing information.standards@hscic.gov.uk with "NHS Data Model and Dictionary - Archive Request" in the email subject line.~~uk~~ with "NHS Data Model and Dictionary - Archive Request" in the email subject line.

CYTOLOGY SCREENING PLAN NUMBER (RETIRED)

Change to Attribute: Changed Description

This item has been retired from the NHS Data Model and Dictionary.

~~The last live version of this item is available in the February 2014 release of the NHS Data Model and Dictionary.~~The last live version of this item is available in the February 2014 release of the NHS Data Model and Dictionary.

~~Access to this version can be obtained by emailing [information](#).~~Access to this version can be obtained by emailing information.standards@hscic.gov.uk with "NHS Data Model and Dictionary - Archive Request" in the email subject line.~~uk~~ with "NHS Data Model and Dictionary - Archive Request" in the email subject line.

DIAGNOSTIC FACILITIES ACUTE (RETIRED)

Change to Attribute: Changed Description

This item has been retired from the NHS Data Model and Dictionary.

~~The last live version of this item is available in the February 2014 release of the NHS Data Model and~~

~~Dictionary.~~The last live version of this item is available in the February 2014 release of the NHS Data Model and Dictionary.

Access to this version can be obtained by emailing information.standards@hscic.gov.uk with "NHS Data Model and Dictionary - Archive Request" in the email subject line.

DISTANCE TO NEXT AVAILABLE PHARMACY (RETIRED)

Change to Attribute: Changed Description

This item has been retired from the NHS Data Model and Dictionary.

~~The last live version of this item is available in the February 2014 release of the NHS Data Model and Dictionary.~~The last live version of this item is available in the February 2014 release of the NHS Data Model and Dictionary.

Access to this version can be obtained by emailing information.standards@hscic.gov.uk with "NHS Data Model and Dictionary - Archive Request" in the email subject line.

DRUG TREATMENT COST (RETIRED)_ renamed from DRUG TREATMENT COST

Change to Attribute: Changed status to Retired, Name, Description

~~The cost of the drug used in a particular [Drug Treatment](#).~~This item has been retired from the NHS Data Model and Dictionary.

The last live version of this item is available in the February 2014 release of the NHS Data Model and Dictionary.

Access to this version can be obtained by emailing information.standards@hscic.gov.uk with "NHS Data Model and Dictionary - Archive Request" in the email subject line.

DRUG TREATMENT COST (RETIRED)_ renamed from DRUG TREATMENT COST

Change to Attribute: Changed status to Retired, Name, Description

- Retired DRUG TREATMENT COST
- Changed Name from Data_Dictionary.Attributes.D.Drug.DRUG_TREATMENT_COST to Retired.Data_Dictionary.Attributes.D.DRUG_TREATMENT_COST
- Changed Description

ELIGIBILITY OUTCOME (RETIRED)

Change to Attribute: Changed Description

This item has been retired from the NHS Data Model and Dictionary.

~~The last live version of this item is available in the February 2014 release of the NHS Data Model and Dictionary.~~The last live version of this item is available in the February 2014 release of the NHS Data

Model and Dictionary.

Access to this version can be obtained by emailing information.standards@hscic.gov.uk with "NHS Data Model and Dictionary - Archive Request" in the email subject line.

ESSENTIAL SMALL PHARMACY INDICATOR (RETIRED)

Change to Attribute: Changed Description

This item has been retired from the NHS Data Model and Dictionary.

~~The last live version of this item is available in the February 2014 release of the NHS Data Model and Dictionary.~~The last live version of this item is available in the February 2014 release of the NHS Data Model and Dictionary.

Access to this version can be obtained by emailing information.standards@hscic.gov.uk with "NHS Data Model and Dictionary - Archive Request" in the email subject line.

GEOGRAPHIC AREA TYPE (RETIRED)

Change to Attribute: Changed Description

This item has been retired from the NHS Data Model and Dictionary.

~~The last live version of this item is available in the February 2014 release of the NHS Data Model and Dictionary.~~The last live version of this item is available in the February 2014 release of the NHS Data Model and Dictionary.

Access to this version can be obtained by emailing information.standards@hscic.gov.uk with "NHS Data Model and Dictionary - Archive Request" in the email subject line.

INITIAL CONTACT WITHIN FIVE DAYS (RETIRED)

Change to Attribute: Changed Description

This item has been retired from the NHS Data Model and Dictionary.

~~The last live version of this item is available in the February 2014 release of the NHS Data Model and Dictionary.~~The last live version of this item is available in the February 2014 release of the NHS Data Model and Dictionary.

Access to this version can be obtained by emailing information.standards@hscic.gov.uk with "NHS Data Model and Dictionary - Archive Request" in the email subject line.

LABOUR PROFESSIONAL PRIOR INVOLVEMENT (RETIRED)_ renamed from LABOUR PROFESSIONAL PRIOR INVOLVEMENT

Change to Attribute: Changed status to Retired, Name, Description

An indication of whether the professional attending the delivery has attended the [PATIENT](#) prior to the onset of labour in the current [Pregnancy Episode](#). The professional may be a [MIDWIFE](#), [GENERAL MEDICAL PRACTITIONER](#) or obstetrician. **This item has been retired from the NHS Data Model and Dictionary.**

Classification: **The last live version of this item is available in the February 2014 release of the NHS Data Model and Dictionary.**

- a. Yes
- b. No

Access to this version can be obtained by emailing information.standards@hscic.gov.uk with "NHS Data Model and Dictionary - Archive Request" in the email subject line.

LABOUR PROFESSIONAL PRIOR INVOLVEMENT (RETIRED)_ renamed from LABOUR PROFESSIONAL PRIOR INVOLVEMENT

Change to Attribute: Changed status to Retired, Name, Description

- Retired LABOUR PROFESSIONAL PRIOR INVOLVEMENT
- Changed Name from Data_Dictionary.Attributes.L.LABOUR_PROFESSIONAL_PRIOR_INVOLVEMENT to Retired.Data_Dictionary.Attributes.L.LABOUR_PROFESSIONAL_PRIOR_INVOLVEMENT
- Changed Description

MIDWIFE EPISODE END REASON (RETIRED)_ renamed from MIDWIFE EPISODE END REASON

Change to Attribute: Changed status to Retired, Name, Description

The reason for ending a [Midwife Episode](#). **This item has been retired from the NHS Data Model and Dictionary.**

Classification: **The last live version of this item is available in the February 2014 release of the NHS Data Model and Dictionary.**

- a. Died
- b. Transfer of care
- c. Self discharged
- d. Discharged on nursing advice

Access to this version can be obtained by emailing information.standards@hscic.gov.uk with "NHS Data Model and Dictionary - Archive Request" in the email subject line.

MIDWIFE EPISODE END REASON (RETIRED)_ renamed from MIDWIFE EPISODE END REASON

Change to Attribute: Changed status to Retired, Name, Description

- Retired MIDWIFE EPISODE END REASON
- Changed Name from Data_Dictionary.Attributes.M.MHCS.MIDWIFE_EPISODE_END_REASON to Retired.Data_Dictionary.Attributes.M.MIDWIFE_EPISODE_END_REASON
- Changed Description

NON ROUTINE RECALL INTERVAL (RETIRED)_ renamed from NON ROUTINE RECALL INTERVAL

Change to Attribute: Changed status to Retired, Name, Description

~~The interval in months until the next recall is due. Note that this attribute need only be entered if the recall interval is not normal, i.e. not equal to the value in [CERVICAL SCREENING RECALL INTERVAL](#).~~ **This item has been retired from the NHS Data Model and Dictionary.**

References:

~~GP - Health Authority Information Flows 1996.~~ **The last live version of this item is available in the February 2014 release of the NHS Data Model and Dictionary.**

Access to this version can be obtained by emailing information.standards@hscic.gov.uk with "NHS Data Model and Dictionary - Archive Request" in the email subject line.

NON ROUTINE RECALL INTERVAL (RETIRED)_ renamed from NON ROUTINE RECALL INTERVAL

Change to Attribute: Changed status to Retired, Name, Description

- Retired NON ROUTINE RECALL INTERVAL
 - Changed Name from Data_Dictionary.Attributes.N.No.NON_ROUTINE_RECALL_INTERVAL to Retired.Data_Dictionary.Attributes.N.NON_ROUTINE_RECALL_INTERVAL
 - Changed Description
-

OCCUPIED BED DAYS NHS PATIENTS (RETIRED)_ renamed from OCCUPIED BED DAYS NHS PATIENTS

Change to Attribute: Changed status to Retired, Name, Description

~~The number of bed days occupied by NHS [PATIENTS](#) during the period of an [ORGANISATION SITE BED OCCUPANCY](#).~~ **This item has been retired from the NHS Data Model and Dictionary.**

The last live version of this item is available in the February 2014 release of the NHS Data Model and Dictionary.

Access to this version can be obtained by emailing information.standards@hscic.gov.uk with "NHS Data Model and Dictionary - Archive Request" in the email subject line.

OCCUPIED BED DAYS NHS PATIENTS (RETIRED)_ renamed from OCCUPIED BED DAYS NHS PATIENTS

Change to Attribute: Changed status to Retired, Name, Description

- Retired OCCUPIED BED DAYS NHS PATIENTS
 - Changed Name from Data_Dictionary.Attributes.O.OCCUPIED_BED_DAYS_NHS_PATIENTS to Retired.Data_Dictionary.Attributes.O.OCCUPIED_BED_DAYS_NHS_PATIENTS
 - Changed Description
-

OCCUPIED BED DAYS NON-NHS PATIENTS (RETIRED)_ renamed from OCCUPIED BED DAYS NON-NHS PATIENTS

Change to Attribute: Changed status to Retired, Name, Description

~~The number of bed days occupied by non-NHS [PATIENTS](#) during the period of an [ORGANISATION SITE BED OCCUPANCY](#).~~ This item has been retired from the NHS Data Model and Dictionary.

The last live version of this item is available in the February 2014 release of the NHS Data Model and Dictionary.

Access to this version can be obtained by emailing information.standards@hscic.gov.uk with "NHS Data Model and Dictionary - Archive Request" in the email subject line.

OCCUPIED BED DAYS NON-NHS PATIENTS (RETIRED)_ renamed from OCCUPIED BED DAYS NON-NHS PATIENTS

Change to Attribute: Changed status to Retired, Name, Description

- Retired OCCUPIED BED DAYS NON-NHS PATIENTS
- Changed Name from Data_Dictionary.Attributes.O.OCCUPIED_BED_DAYS_NON-NHS_PATIENTS to Retired.Data_Dictionary.Attributes.O.OCCUPIED_BED_DAYS_NON-NHS_PATIENTS
- Changed Description

OFFER OF ADMISSION GROUP IDENTIFIER (RETIRED)_ renamed from OFFER OF ADMISSION GROUP IDENTIFIER

Change to Attribute: Changed status to Retired, Name, Description

~~A unique number which associates a set of [OFFERS OF ADMISSION](#) for the same [ELECTIVE ADMISSION LIST ENTRY](#).~~ This item has been retired from the NHS Data Model and Dictionary.

The last live version of this item is available in the February 2014 release of the NHS Data Model and Dictionary.

Access to this version can be obtained by emailing information.standards@hscic.gov.uk with "NHS Data Model and Dictionary - Archive Request" in the email subject line.

OFFER OF ADMISSION GROUP IDENTIFIER (RETIRED)_ renamed from OFFER OF ADMISSION GROUP IDENTIFIER

Change to Attribute: Changed status to Retired, Name, Description

- Retired OFFER OF ADMISSION GROUP IDENTIFIER
- Changed Name from Data_Dictionary.Attributes.O.OFFER_OF_ADMISSION_GROUP_IDENTIFIER to Retired.Data_Dictionary.Attributes.O.OFFER_OF_ADMISSION_GROUP_IDENTIFIER
- Changed Description

OPHTHALMIC MEDICAL PRACTITIONER END DATE (RETIRED)___ renamed from OPHTHALMIC MEDICAL PRACTITIONER END DATE

Change to Attribute: Changed status to Retired, Name, Description

~~The [DATE](#) on which the [OPHTHALMIC MEDICAL PRACTITIONER](#) ceased to be employed.~~ This item has been

retired from the NHS Data Model and Dictionary.

The last live version of this item is available in the February 2014 release of the NHS Data Model and Dictionary.

Access to this version can be obtained by emailing information.standards@hscic.gov.uk with "NHS Data Model and Dictionary - Archive Request" in the email subject line.

OPHTHALMIC MEDICAL PRACTITIONER END DATE (RETIRED)___ renamed from OPHTHALMIC MEDICAL PRACTITIONER END DATE

Change to Attribute: Changed status to Retired, Name, Description

- Retired OPHTHALMIC MEDICAL PRACTITIONER END DATE
- Changed Name from Data_Dictionary.Attributes.O.OPHTHALMIC_MEDICAL_PRACTITIONER_END_DATE to Retired.Data_Dictionary.Attributes.O.OPHTHALMIC_MEDICAL_PRACTITIONER_END_DATE
- Changed Description

OPHTHALMIC MEDICAL PRACTITIONER START DATE (RETIRED)___ renamed from OPHTHALMIC MEDICAL PRACTITIONER START DATE

Change to Attribute: Changed status to Retired, Name, Description

The ~~DATE~~ on which the ~~OPHTHALMIC MEDICAL PRACTITIONER~~ became employed. This item has been retired from the NHS Data Model and Dictionary.

The last live version of this item is available in the February 2014 release of the NHS Data Model and Dictionary.

Access to this version can be obtained by emailing information.standards@hscic.gov.uk with "NHS Data Model and Dictionary - Archive Request" in the email subject line.

OPHTHALMIC MEDICAL PRACTITIONER START DATE (RETIRED)___ renamed from OPHTHALMIC MEDICAL PRACTITIONER START DATE

Change to Attribute: Changed status to Retired, Name, Description

- Retired OPHTHALMIC MEDICAL PRACTITIONER START DATE
- Changed Name from Data_Dictionary.Attributes.O.OPHTHALMIC_MEDICAL_PRACTITIONER_START_DATE to Retired.Data_Dictionary.Attributes.O.OPHTHALMIC_MEDICAL_PRACTITIONER_START_DATE
- Changed Description

OPHTHALMIC QUALIFICATION COMMITTEE CODE (RETIRED)___ renamed from OPHTHALMIC QUALIFICATION COMMITTEE CODE

Change to Attribute: Changed status to Retired, Name, Description

A unique identifier for an ~~OPHTHALMIC MEDICAL PRACTITIONER~~ allocated by the ~~Ophthalmic Qualifications Committee~~. This item has been retired from the NHS Data Model and Dictionary.

The last live version of this item is available in the February 2014 release of the NHS Data Model and Dictionary.

Access to this version can be obtained by emailing information.standards@hscic.gov.uk with "NHS Data Model and Dictionary - Archive Request" in the email subject line.

OPHTHALMIC QUALIFICATION COMMITTEE CODE (RETIRED)___ renamed from OPHTHALMIC QUALIFICATION COMMITTEE CODE

Change to Attribute: Changed status to Retired, Name, Description

- Retired OPHTHALMIC QUALIFICATION COMMITTEE CODE
- Changed Name from Data_Dictionary.Attributes.O.OPHTHALMIC_QUALIFICATION_COMMITTEE_CODE to Retired.Data_Dictionary.Attributes.O.OPHTHALMIC_QUALIFICATION_COMMITTEE_CODE
- Changed Description

OPTICIAN PREMISES TYPE (RETIRED)

Change to Attribute: Changed Description

This item has been retired from the NHS Data Model and Dictionary.

~~The last live version of this item is available in the February 2014 release of the NHS Data Model and Dictionary.~~The last live version of this item is available in the February 2014 release of the NHS Data Model and Dictionary.

Access to this version can be obtained by emailing information.standards@hscic.gov.uk with "NHS Data Model and Dictionary - Archive Request" in the email subject line.

ORGANISATION SITE BED AVAILABILITY END DATE (RETIRED)

Change to Attribute: Changed Description

This item has been retired from the NHS Data Model and Dictionary.

~~The last live version of this item is available in the February 2014 release of the NHS Data Model and Dictionary.~~The last live version of this item is available in the February 2014 release of the NHS Data Model and Dictionary.

~~Access to this version can be obtained by emailing information.standards@hscic.gov.uk with "NHS Data Model and Dictionary - Archive Request" in the email subject line.~~Access to this version can be obtained by emailing information.standards@hscic.gov.uk with "NHS Data Model and Dictionary - Archive Request" in the email subject line.

ORGANISATION SITE BED AVAILABILITY START DATE (RETIRED)

Change to Attribute: Changed Description

This item has been retired from the NHS Data Model and Dictionary.

~~The last live version of this item is available in the February 2014 release of the NHS Data Model and Dictionary.~~

~~Dictionary.~~The last live version of this item is available in the February 2014 release of the NHS Data Model and Dictionary.

~~Access to this version can be obtained by emailing information.standards@hscic.gov.uk with "NHS Data Model and Dictionary - Archive Request" in the email subject line.~~uk with "NHS Data Model and Dictionary - Archive Request" in the email subject line.

**ORGANISATION SITE BED OCCUPANCY END DATE (RETIRED)___ renamed
from ORGANISATION SITE BED OCCUPANCY END DATE**

Change to Attribute: Changed status to Retired, Name, Description

~~The date at which the count of the number of occupied bed days finishes.~~This item has been retired from the NHS Data Model and Dictionary.

The last live version of this item is available in the February 2014 release of the NHS Data Model and Dictionary.

Access to this version can be obtained by emailing information.standards@hscic.gov.uk with "NHS Data Model and Dictionary - Archive Request" in the email subject line.

**ORGANISATION SITE BED OCCUPANCY END DATE (RETIRED)___ renamed
from ORGANISATION SITE BED OCCUPANCY END DATE**

Change to Attribute: Changed status to Retired, Name, Description

- Retired ORGANISATION SITE BED OCCUPANCY END DATE
- Changed Name from Data_Dictionary.Attributes.O.Org.ORGANISATION_SITE_BED_OCCUPANCY_END_DATE to Retired.Data_Dictionary.Attributes.O.ORGANISATION_SITE_BED_OCCUPANCY_END_DATE
- Changed Description

**ORGANISATION SITE BED OCCUPANCY START DATE (RETIRED)___ renamed
from ORGANISATION SITE BED OCCUPANCY START DATE**

Change to Attribute: Changed status to Retired, Name, Description

~~The date at which the count of the number of occupied bed days starts.~~This item has been retired from the NHS Data Model and Dictionary.

The last live version of this item is available in the February 2014 release of the NHS Data Model and Dictionary.

Access to this version can be obtained by emailing information.standards@hscic.gov.uk with "NHS Data Model and Dictionary - Archive Request" in the email subject line.

**ORGANISATION SITE BED OCCUPANCY START DATE (RETIRED)___ renamed
from ORGANISATION SITE BED OCCUPANCY START DATE**

Change to Attribute: Changed status to Retired, Name, Description

- Retired ORGANISATION SITE BED OCCUPANCY START DATE
- Changed Name from Data_Dictionary.Attributes.O.Org.ORGANISATION_SITE_BED_OCCUPANCY_START_DATE to Retired.Data_Dictionary.Attributes.O.ORGANISATION_SITE_BED_OCCUPANCY_START_DATE
- Changed Description

ORGANISATION SITE CLASSIFICATION (RETIRED)

Change to Attribute: Changed Description

This item has been retired from the NHS Data Model and Dictionary.

~~The last live version of this item is available in the February 2014 release of the NHS Data Model and Dictionary.~~ The last live version of this item is available in the February 2014 release of the NHS Data Model and Dictionary.

Access to this version can be obtained by emailing information.standards@hscic.gov.uk with "NHS Data Model and Dictionary - Archive Request" in the email subject line.

PAYMENT FROM PATIENT RECEIVED (RETIRED)_ renamed from PAYMENT FROM PATIENT RECEIVED

Change to Attribute: Changed status to Retired, Name, Description

~~The amount of payment received from the PATIENT after an eligibility check for the application for a sight test or spectacles showed that repayment was required.~~ This item has been retired from the NHS Data Model and Dictionary.

The last live version of this item is available in the February 2014 release of the NHS Data Model and Dictionary.

Access to this version can be obtained by emailing information.standards@hscic.gov.uk with "NHS Data Model and Dictionary - Archive Request" in the email subject line.

PAYMENT FROM PATIENT RECEIVED (RETIRED)_ renamed from PAYMENT FROM PATIENT RECEIVED

Change to Attribute: Changed status to Retired, Name, Description

- Retired PAYMENT FROM PATIENT RECEIVED
- Changed Name from Data_Dictionary.Attributes.P.Paya.PAYMENT_FROM_PATIENT_RECEIVED to Retired.Data_Dictionary.Attributes.P.PAYMENT_FROM_PATIENT_RECEIVED
- Changed Description

PREGNANCY LEAD PROFESSIONAL TYPE (RETIRED)_ renamed from PREGNANCY LEAD PROFESSIONAL TYPE

Change to Attribute: Changed status to Retired, Name, Description

The type of professional who will personally give a substantial part of the care during the [Pregnancy Episode](#) and who is responsible for ensuring that the pregnant woman has access to care from other professionals as appropriate. The type of professional may change during pregnancy, if it does, record as changed. **This item has been retired from the NHS Data Model and Dictionary.**

Classification: The last live version of this item is available in the February 2014 release of the NHS Data Model and Dictionary.

- a. MIDWIFE
- b. GENERAL MEDICAL PRACTITIONER
- c. Obstetrician
- d. Changed

Access to this version can be obtained by emailing information.standards@hscic.gov.uk with "NHS Data Model and Dictionary - Archive Request" in the email subject line.

PREGNANCY LEAD PROFESSIONAL TYPE (RETIRED)_ renamed from PREGNANCY LEAD PROFESSIONAL TYPE

Change to Attribute: Changed status to Retired, Name, Description

- Retired PREGNANCY LEAD PROFESSIONAL TYPE
- Changed Name from Data_Dictionary.Attributes.P.Pow.PREGNANCY_LEAD_PROFESSIONAL_TYPE to Retired.Data_Dictionary.Attributes.P.PREGNANCY_LEAD_PROFESSIONAL_TYPE
- Changed Description

PREVIOUS PROVIDER OFFERED ADMISSION DATE (RETIRED)___ renamed from PREVIOUS PROVIDER OFFERED ADMISSION DATE

Change to Attribute: Changed status to Retired, Name, Description

The date of the most recent previous [OFFER OF ADMISSION](#) to the [PATIENT](#) for the same condition, which was made by a previous [Health Care Provider](#), and subsequently cancelled by them for non-medical reasons, on or after the [OFFERED FOR ADMISSION DATE](#). **This item has been retired from the NHS Data Model and Dictionary.**

The last live version of this item is available in the February 2014 release of the NHS Data Model and Dictionary.

Access to this version can be obtained by emailing information.standards@hscic.gov.uk with "NHS Data Model and Dictionary - Archive Request" in the email subject line.

PREVIOUS PROVIDER OFFERED ADMISSION DATE (RETIRED)___ renamed from PREVIOUS PROVIDER OFFERED ADMISSION DATE

Change to Attribute: Changed status to Retired, Name, Description

- Retired PREVIOUS PROVIDER OFFERED ADMISSION DATE
- Changed Name from Data_Dictionary.Attributes.P.Prev.PREVIOUS_PROVIDER_OFFERED_ADMISSION_DATE to Retired.Data_Dictionary.Attributes.P.PREVIOUS_PROVIDER_OFFERED_ADMISSION_DATE
- Changed Description

REFERRAL STATUS (RETIRED)_ renamed from REFERRAL STATUS

Change to Attribute: Changed status to Retired, Name, Description

The status of a [REFERRAL REQUEST](#) for an [Out-Patient Appointment](#). This item has been retired from the NHS Data Model and Dictionary.

The [REFERRAL STATUS](#) monitors the progress of an out-patient referral, from the time that the referral is received by the Trust until the referral is closed. The last live version of this item is available in the February 2014 release of the NHS Data Model and Dictionary.

The [REFERRAL STATUS](#) should be first recorded when the out-patient [REFERRAL REQUEST](#) is received and accepted. Access to this version can be obtained by emailing information.standards@hscic.gov.uk with "NHS Data Model and Dictionary - Archive Request" in the email subject line.

- If the [PATIENT](#) is given an immediate [APPOINTMENT](#), the initial status will be 'Appointment accepted / made'.
- If the [PATIENT](#) is not given an immediate [APPOINTMENT](#), the initial status will be 'Appointment pending', which will change to 'Appointment accepted / made' when the [APPOINTMENT](#) has been agreed with, or sent to, the [PATIENT](#).
- The final status will always be 'Referral closed'.

Note that 'Appointment accepted / made' and 'Appointment pending' relate only to [APPOINTMENTS](#) for a first attendance.

Classification:

- a: Appointment accepted / made
- b: Appointment pending
- c: Referral closed

REFERRAL STATUS (RETIRED)_ renamed from REFERRAL STATUS

Change to Attribute: Changed status to Retired, Name, Description

- Retired REFERRAL STATUS
- Changed Name from Data_Dictionary.Attributes.R.Red.REFERRAL_STATUS to Retired.Data_Dictionary.Attributes.R.REFERRAL_STATUS
- Changed Description

REFERRAL STATUS DATE (RETIRED)_ renamed from REFERRAL STATUS DATE

Change to Attribute: Changed status to Retired, Name, Description

The date on which a [REFERRAL REQUEST STATUS](#) was recorded. This item has been retired from the NHS Data Model and Dictionary.

The last live version of this item is available in the February 2014 release of the NHS Data Model and Dictionary.

Access to this version can be obtained by emailing information.standards@hscic.gov.uk with "NHS Data Model and Dictionary - Archive Request" in the email subject line.

REFERRAL STATUS DATE (RETIRED)_ renamed from REFERRAL STATUS DATE

Change to Attribute: Changed status to Retired, Name, Description

- Retired REFERRAL STATUS DATE
- Changed Name from Data_Dictionary.Attributes.R.Red.REFERRAL_STATUS_DATE to Retired.Data_Dictionary.Attributes.R.REFERRAL_STATUS_DATE
- Changed Description

REFUGEE OR STATELESS PERSON INDICATOR (RETIRED)_ renamed from REFUGEE OR STATELESS PERSON INDICATOR

Change to Attribute: Changed status to Retired, Name, Description

~~An indication of whether a [Person Nationality or Residency Status](#) applies to someone who is a refugee and stateless [PERSON](#) or a dependant and survivor of a refugee and stateless [PERSON](#). This item has been retired from the NHS Data Model and Dictionary.~~

~~*Classification:* The last live version of this item is available in the February 2014 release of the NHS Data Model and Dictionary.~~

- a: Yes
- b: No

~~Access to this version can be obtained by emailing information.standards@hscic.gov.uk with "NHS Data Model and Dictionary - Archive Request" in the email subject line.~~

REFUGEE OR STATELESS PERSON INDICATOR (RETIRED)_ renamed from REFUGEE OR STATELESS PERSON INDICATOR

Change to Attribute: Changed status to Retired, Name, Description

- Retired REFUGEE OR STATELESS PERSON INDICATOR
- Changed Name from Data_Dictionary.Attributes.R.Red.REFUGEE_OR_STATELESS_PERSON_INDICATOR to Retired.Data_Dictionary.Attributes.R.REFUGEE_OR_STATELESS_PERSON_INDICATOR
- Changed Description

SCREENING CONDITION OR DISEASE (RETIRED)_ renamed from SCREENING CONDITION OR DISEASE

Change to Attribute: Changed status to Retired, Name, Description

~~A reason for a [Screening Programme](#), which is normally for a specific disease or impairment. This item has been retired from the NHS Data Model and Dictionary.~~

~~*Examples:* The last live version of this item is available in the February 2014 release of the NHS Data Model and Dictionary.~~

- a: ~~Antenatal:~~
 - i: ~~alpha-fetoprotein~~
 - ii: ~~sickle cell anaemia~~
 - iii: ~~rhesus antibodies~~
 - iv: ~~chromosome count~~
- b: ~~Neonatal:~~

- i: phenylketonuria
- ii: hypothyroidism
- c: Children:
 - i: hearing impairment
 - ii: visual impairment
 - iii: dental decay
- d: Women:
 - i: cancer of the cervix (CR)
 - ii: cancer of the breast (CR)

~~Note: This list is an example only and may be adjusted to meet local requirements. Those required to enable data to be provided centrally are identified by (CR).~~ Access to this version can be obtained by emailing information.standards@hscic.gov.uk with "NHS Data Model and Dictionary - Archive Request" in the email subject line.

SCREENING CONDITION OR DISEASE (RETIRED)_ renamed from SCREENING CONDITION OR DISEASE

Change to Attribute: Changed status to Retired, Name, Description

- Retired SCREENING CONDITION OR DISEASE
- Changed Name from Data_Dictionary.Attributes.S.Scr.SCREENING_CONDITION_OR_DISEASE to Retired.Data_Dictionary.Attributes.S.SCREENING_CONDITION_OR_DISEASE
- Changed Description

SELF-REFERRAL OR OPEN ACCESS (RETIRED)_ renamed from SELF-REFERRAL OR OPEN ACCESS

Change to Attribute: Changed status to Retired, Name, Description

~~An indicator of whether or not a [SERVICE](#) is open access or operates on a self-referral basis.~~ This item has been retired from the NHS Data Model and Dictionary.

~~Classification:~~ The last live version of this item is available in the February 2014 release of the NHS Data Model and Dictionary.

- a: Yes
- b: No

Access to this version can be obtained by emailing information.standards@hscic.gov.uk with "NHS Data Model and Dictionary - Archive Request" in the email subject line.

SELF-REFERRAL OR OPEN ACCESS (RETIRED)_ renamed from SELF-REFERRAL OR OPEN ACCESS

Change to Attribute: Changed status to Retired, Name, Description

- Retired SELF-REFERRAL OR OPEN ACCESS
- Changed Name from Data_Dictionary.Attributes.S.Scr.SELF-REFERRAL_OR_OPEN_ACCESS to Retired.Data_Dictionary.Attributes.S.SELF-REFERRAL_OR_OPEN_ACCESS
- Changed Description

SIGHT TEST DOMICILIARY VISIT TYPE (RETIRED)

Change to Attribute: Changed Description

This item has been retired from the NHS Data Model and Dictionary.

~~The last live version of this item is available in the February 2014 release of the NHS Data Model and Dictionary.~~The last live version of this item is available in the February 2014 release of the NHS Data Model and Dictionary.

Access to this version can be obtained by emailing information.standards@hscic.gov.uk with "NHS Data Model and Dictionary - Archive Request" in the email subject line.

SIGHT TEST FORM COMPLETED (RETIRED)

Change to Attribute: Changed Description

This item has been retired from the NHS Data Model and Dictionary.

~~The last live version of this item is available in the February 2014 release of the NHS Data Model and Dictionary.~~The last live version of this item is available in the February 2014 release of the NHS Data Model and Dictionary.

Access to this version can be obtained by emailing information.standards@hscic.gov.uk with "NHS Data Model and Dictionary - Archive Request" in the email subject line.

SIGHT TEST PERSON SUBSIDY TYPE (RETIRED)

Change to Attribute: Changed Description

This item has been retired from the NHS Data Model and Dictionary.

~~The last live version of this item is available in the February 2014 release of the NHS Data Model and Dictionary.~~The last live version of this item is available in the February 2014 release of the NHS Data Model and Dictionary.

Access to this version can be obtained by emailing information.standards@hscic.gov.uk with "NHS Data Model and Dictionary - Archive Request" in the email subject line.

UNWANTED MEDICINE SCHEME INDICATOR (RETIRED)_ renamed from UNWANTED MEDICINE SCHEME INDICATOR

Change to Attribute: Changed status to Retired, Name, Description

~~An indicator of whether the [ORGANISATION SITE](#) is covered by a scheme for the collection and disposal of unwanted medicines through pharmacies.~~This item has been retired from the NHS Data Model and Dictionary.

Classification: The last live version of this item is available in the February 2014 release of the NHS Data Model and Dictionary.

- a. Yes
- b. No

Access to this version can be obtained by emailing information.standards@hscic.gov.uk with "NHS Data Model and Dictionary - Archive Request" in the email subject line.

UNWANTED MEDICINE SCHEME INDICATOR (RETIRED)_ renamed from UNWANTED MEDICINE SCHEME INDICATOR

Change to Attribute: Changed status to Retired, Name, Description

- Retired UNWANTED MEDICINE SCHEME INDICATOR
- Changed Name from Data_Dictionary.Attributes.U.UNWANTED_MEDICINE_SCHEME_INDICATOR to Retired.Data_Dictionary.Attributes.U.UNWANTED_MEDICINE_SCHEME_INDICATOR
- Changed Description

BROAD PATIENT GROUP CODE (RETIRED)_ renamed from BROAD PATIENT GROUP CODE

Change to Data Element: Changed status to Retired, Name, Description, linked Attribute

Format/Length:	n1
HES Item:	
National Codes:	See BROAD PATIENT GROUP CODE
Default Codes:	

Notes:

~~[BROAD PATIENT GROUP CODE](#)~~ is the same as attribute ~~[BROAD PATIENT GROUP CODE](#)~~. This item has been retired from the NHS Data Model and Dictionary.

The last live version of this item is available in the February 2014 release of the NHS Data Model and Dictionary.

Access to this version can be obtained by emailing information.standards@hscic.gov.uk with "NHS Data Model and Dictionary - Archive Request" in the email subject line.

BROAD PATIENT GROUP CODE (RETIRED)_ renamed from BROAD PATIENT GROUP CODE

Change to Data Element: Changed status to Retired, Name, Description, linked Attribute

~~BROAD PATIENT GROUP CODE~~

Attribute:

BROAD PATIENT GROUP CODE

BROAD PATIENT GROUP CODE (RETIRED)_ renamed from BROAD PATIENT GROUP CODE

Change to Data Element: Changed status to Retired, Name, Description, linked Attribute

- Retired BROAD PATIENT GROUP CODE
- Changed Name from Data_Dictionary.Data_Field_Notes.B.Br.BROAD_PATIENT_GROUP_CODE to

Retired.Data_Dictionary.Data_Field_Notes.B.BROAD_PATIENT_GROUP_CODE

- Changed Description
- null

ELECTORAL WARD OF USUAL ADDRESS (RETIRED)_ renamed from ELECTORAL WARD OF USUAL ADDRESS

Change to Data Element: Changed status to Retired, Name, Description

Format/Length:	an6
HES Item:	
National Codes:	
Default Codes:	

Notes:

[ELECTORAL_WARD_OF_USUAL_ADDRESS](#) is the [Electoral Ward](#) of the [ADDRESS](#) nominated by the [PATIENT](#) where the [ADDRESS_ASSOCIATION_TYPE](#) is 'Main Permanent Residence' or 'Other Permanent Residence'. **This item has been retired from the NHS Data Model and Dictionary.**

The last live version of this item is available in the February 2014 release of the NHS Data Model and Dictionary.

Access to this version can be obtained by emailing information.standards@hscic.gov.uk with "NHS Data Model and Dictionary - Archive Request" in the email subject line.

ELECTORAL WARD OF USUAL ADDRESS (RETIRED)_ renamed from ELECTORAL WARD OF USUAL ADDRESS

Change to Data Element: Changed status to Retired, Name, Description

- Retired ELECTORAL WARD OF USUAL ADDRESS
- Changed Name from Data_Dictionary.Data_Field_Notes.E.ELECTORAL_WARD_OF_USUAL_ADDRESS to Retired.Data_Dictionary.Data_Field_Notes.E.ELECTORAL_WARD_OF_USUAL_ADDRESS
- Changed Description

GENERAL MEDICAL PRACTICE CODE (PATIENT REGISTRATION)

Change to Data Element: Changed Description

Format/Length:	an6
HES Item:	GPPRAC
National Codes:	
ODS Default Codes:	V81997 - No Registered GP Practice
	V81998 - GP Practice Code not applicable
	V81999 - GP Practice Code not known

Notes:

[GENERAL MEDICAL PRACTICE CODE \(PATIENT REGISTRATION\)](#) is the same as attribute [ORGANISATION CODE](#).

[GENERAL MEDICAL PRACTICE CODE \(PATIENT REGISTRATION\)](#) is the [ORGANISATION CODE](#) of the [GP Practice](#) that the [PATIENT](#) is registered with.

Use of [Organisation Data Service Default Codes](#)

- **V81997** should be used when a [PATIENT](#) presents, who is not currently registered at a [GP Practice](#), *but is eligible to be registered should they wish to.*

- **V81998** should be used where a [PATIENT](#) should not have a registered [GP Practice](#), due for instance to them having only recently entered the country.
- **V81999** should be used where it is not possible to determine a [PATIENT](#)'s registered [GP Practice](#) code, but it is known that they should have one, or where it is impossible to determine whether they should or shouldn't have a registered practice (for instance the [PATIENT](#) cannot communicate and is unidentified).

~~CODE OF GP PRACTICE (REGISTERED GMP) DESCRIPTION REPLACED 1 JUNE 2008:~~

~~The code of the practice is an ORGANISATION CODE.~~

~~This is the code of the practice of the PATIENT's registered GENERAL MEDICAL PRACTITIONER which lets him or her be notified about treatment received by the PATIENT. The registered GENERAL MEDICAL PRACTITIONER may or may not be the same as the referring GENERAL MEDICAL PRACTITIONER.~~

For enquiries about this Change Request, please email information.standards@hscic.gov.uk