

## Health and Social Care Information Centre

### NHS Data Model and Dictionary Service

**Type:** Data Dictionary Change Notice  
**Reference:** 1444  
**Version No:** 1.0  
**Subject:** Retirement of Standards  
**Effective Date:** 1 April 2014  
**Reason for Change:** Retirement of Standards  
**Publication Date:** 27 February 2014

#### Background:

The Information Standards Board for Health and Social Care (ISB) has conducted a review of all Data Set Change Notices (DSCNs) and Information Standards Notices (ISNs) issued since 1987, to update its portfolio of standards prior to the handover of responsibility to NHS England, the Health and Social Care Information Centre (HSCIC) and Public Health England. The full list can be found on the ISB [Advanced Notification - Withdrawal](#) issued 26/09/13.

This review has identified a number of items in the NHS Data Model and Dictionary which do not have a Data Set Change Notice or Information Standards Notice and are not used within a data set in the NHS Data Model and Dictionary.

This Data Dictionary Change Notice (DDCN) retires items in the NHS Data Model and Dictionary:

- which do not have a Data Set Change Notice or Information Standards Notice and are not used within a data set in the NHS Data Model and Dictionary or
- were included in [DSCN 19/2010 "Central Returns: KA34 Ambulance Services"](#) but not used within the data set.

To view a demonstration on "How to Read an NHS Data Model and Dictionary Change Request", visit the NHS Data Model and Dictionary help pages at: [http://www.datadictionary.nhs.uk/Flash\\_Files/changerequest.htm](http://www.datadictionary.nhs.uk/Flash_Files/changerequest.htm).

Note: if the web page does not open, please copy the link and paste into the web browser.

#### Summary of changes:

##### Diagrams

[CARE PROFESSIONAL DIAGRAM](#)

Changed Diagram

[PATIENT PATHWAY DIAGRAM](#)

Changed Diagram

##### Supporting Information

[GLOSSARY OF TERMS](#)

Changed Description

##### Class Definitions

[TRANSPORT REQUEST](#)

Changed Attributes, Description

[TRANSPORT REQUEST INCIDENT](#)

Changed Attributes, Relationships

[TRANSPORT RESPONSE MOBILISATION \(RETIRED\)](#) renamed from [TRANSPORT RESPONSE MOBILISATION](#)

Changed Attributes, Relationships, status to Retired, Description, Name

##### Attribute Definitions

[JOURNEY REASON \(RETIRED\)](#) renamed from [JOURNEY REASON](#)

Changed status to Retired,

<a href="#"><u>TRANSPORT NEED (RETIRED)</u></a> renamed from <a href="#"><u>TRANSPORT NEED</u></a>	Description, Name Changed status to Retired, Description, Name
<a href="#"><u>TRANSPORT REQUEST TYPE (RETIRED)</u></a> renamed from <a href="#"><u>TRANSPORT REQUEST TYPE</u></a>	Changed status to Retired, Description, Name
<a href="#"><u>TRANSPORT RESPONSE MOBILISATION DATE (RETIRED)</u></a> renamed from <a href="#"><u>TRANSPORT RESPONSE MOBILISATION DATE</u></a>	Changed status to Retired, Description, Name
<a href="#"><u>TRANSPORT RESPONSE MOBILISATION IDENTIFIER (RETIRED)</u></a> renamed from <a href="#"><u>TRANSPORT RESPONSE MOBILISATION IDENTIFIER</u></a>	Changed status to Retired, Description, Name
<a href="#"><u>TRANSPORT RESPONSE MOBILISATION TIME (RETIRED)</u></a> renamed from <a href="#"><u>TRANSPORT RESPONSE MOBILISATION TIME</u></a>	Changed status to Retired, Description, Name

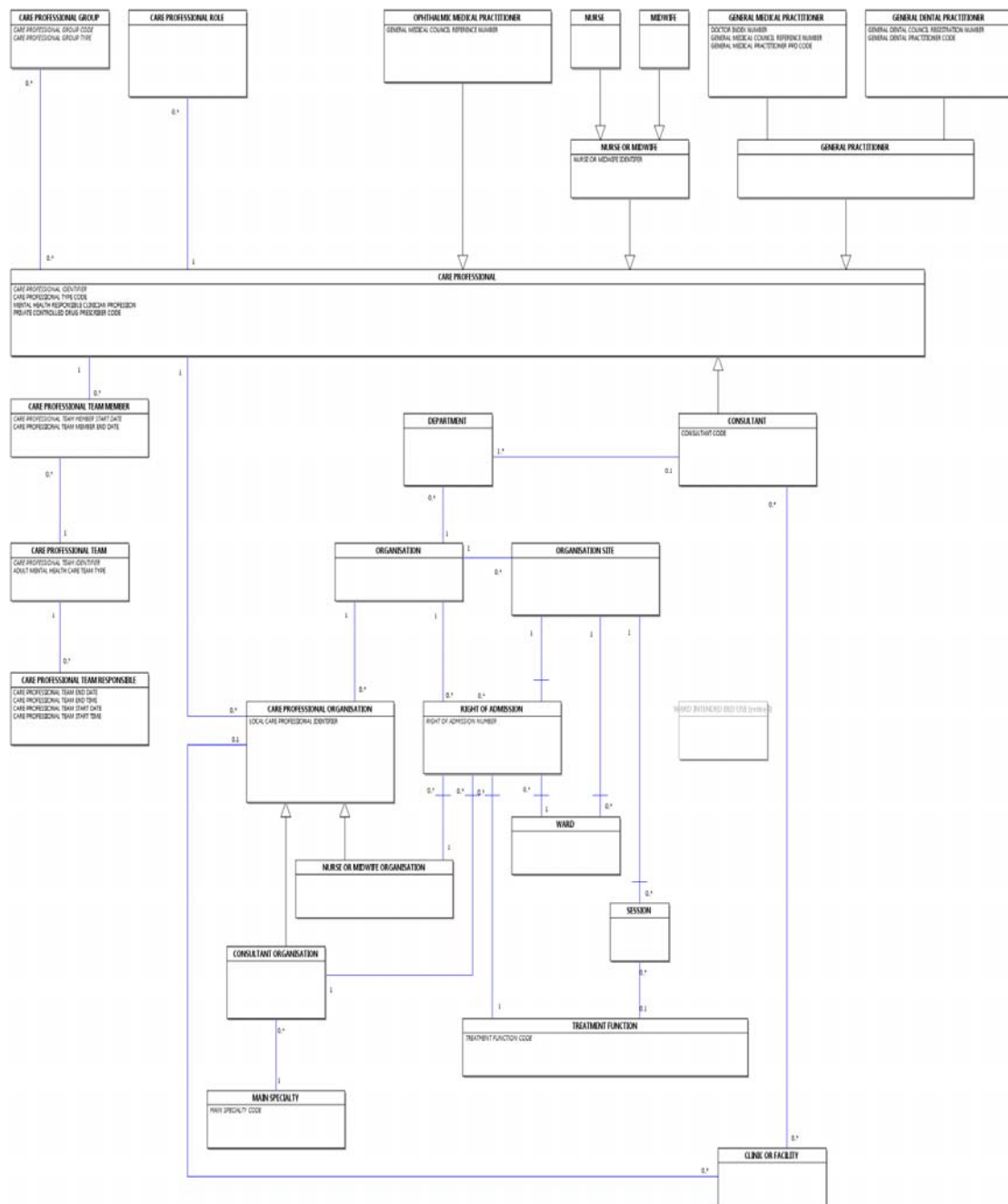
**Date:** 27 February 2014

**Sponsor:** Dr K. Lunn, Director of Information Standards Delivery. Health and Social Care Information Centre

**Note:** New text is shown with a blue background. Deleted text is crossed out. Retired text is shown in grey. Within the Diagrams deleted classes and relationships are red, changed items are blue and new items are green.

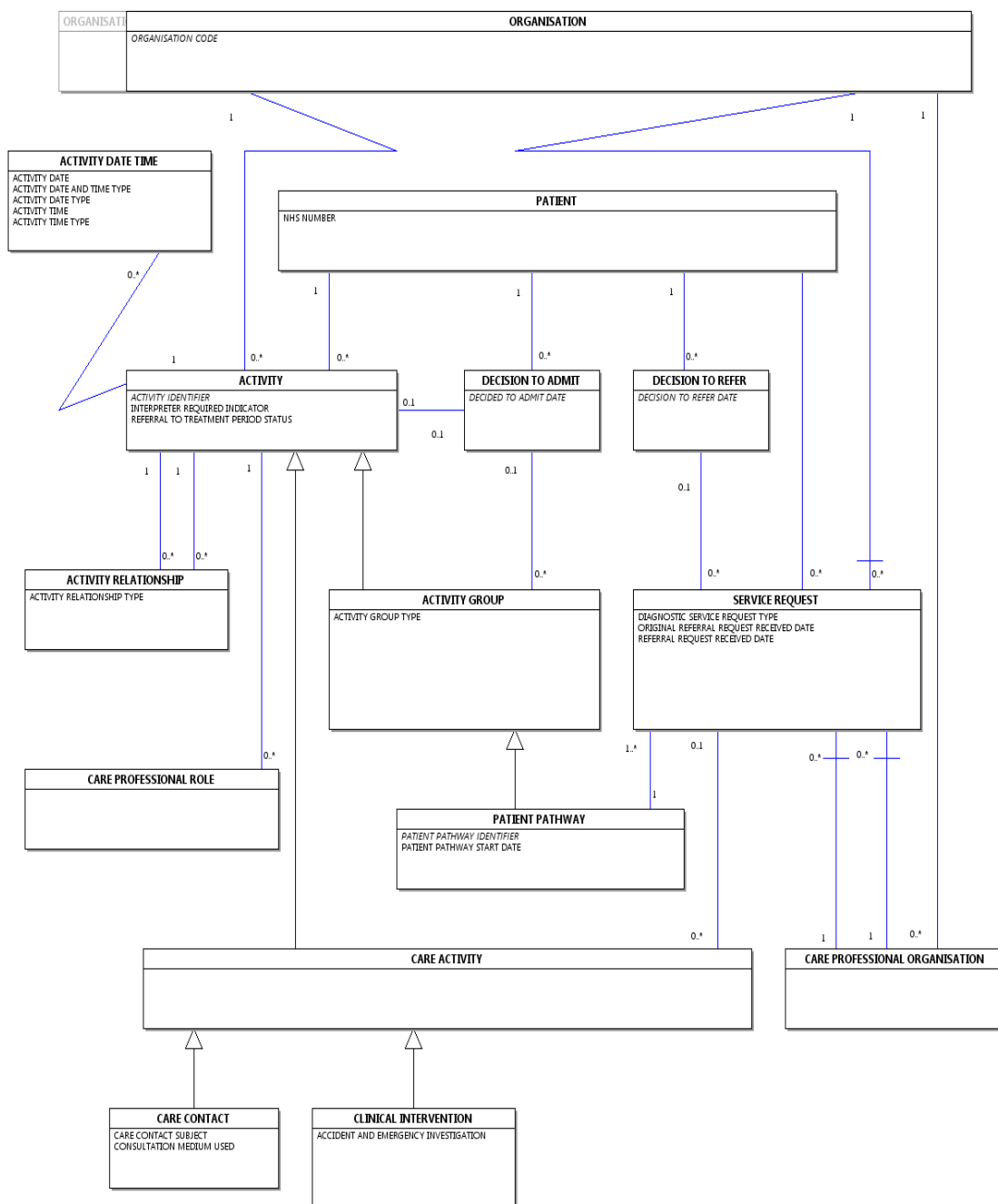
# CARE PROFESSIONAL DIAGRAM

Change to Diagram: Changed Diagram



# PATIENT PATHWAY DIAGRAM

Change to Diagram: Changed Diagram



## GLOSSARY OF TERMS

Change to Supporting Information: Changed Description

The Glossary lists commonly used terms in alphabetical order. These terms are not defined and therefore do not have a class or attribute. Each entry in the Glossary is shown with its related class and attribute where appropriate.

For example 'Booked Admission' is shown as relating to the class [ELECTIVE ADMISSION LIST ENTRY](#). [ELECTIVE](#)

[ADMISSION LIST ENTRY](#) has an attribute [ELECTIVE ADMISSION TYPE](#) and reference to the attribute definition will identify that 'Booked Admission' is one of the national code classifications of [ELECTIVE ADMISSION TYPES](#).

Class	Attribute
<b>Admission</b>	
<a href="#">Hospital Provider Spell</a>	<a href="#">ACTIVITY DATE</a> of the <a href="#">ACTIVITY DATE TYPE</a> <a href="#">Start Date</a>
<b>Annual Census</b>	
<a href="#">Hospital Provider Spell</a>	<a href="#">ACTIVITY DATE</a> of the <a href="#">ACTIVITY DATE TYPE</a> <a href="#">Start Date</a>
<a href="#">OPERATIVE PROCEDURE</a>	
<a href="#">Mental Health Act Legal Status</a>	<a href="#">MENTAL CATEGORY</a>
<a href="#">Hospital Provider Spell</a>	<a href="#">ACTIVITY DATE</a> of the <a href="#">ACTIVITY DATE TYPE</a> <a href="#">Discharge Date</a>
<a href="#">PATIENT DIAGNOSIS</a>	
<b>Booked Admission</b>	
<a href="#">ELECTIVE ADMISSION LIST ENTRY</a>	<a href="#">ELECTIVE ADMISSION TYPE</a>
<b>Code of General Practitioner</b>	
<a href="#">GENERAL MEDICAL PRACTITIONER</a>	<a href="#">GENERAL MEDICAL PRACTITIONER PPD CODE</a>
<a href="#">GENERAL DENTAL PRACTITIONER</a>	<a href="#">GENERAL DENTAL PRACTITIONER CODE</a>
<b>Consultant Code</b>	
<a href="#">CONSULTANT</a>	<a href="#">CONSULTANT CODE</a>
<b>Consultant Name</b>	
<a href="#">PERSON NAME</a>	
<b>Day Case Admission</b>	
<a href="#">Hospital Provider Spell</a>	<a href="#">PATIENT CLASSIFICATION</a>
<b>Diagnostic Services</b>	
<a href="#">Pathology Department</a>	
<a href="#">Radiology Department</a>	
<a href="#">Isotope Procedure Department</a>	
<a href="#">Physiological Measurement Department</a>	
<b>Discharge</b>	
<a href="#">Hospital Provider Spell</a>	<a href="#">ACTIVITY DATE</a> of the <a href="#">ACTIVITY DATE TYPE</a> <a href="#">Discharge Date</a>
<b>Drop-In Clinic</b>	
<a href="#">REFERRAL REQUEST</a>	<a href="#">OUT-PATIENT CLINIC REFERRING INDICATOR</a>
<b>Emergency Admission</b>	
<a href="#">Hospital Provider Spell</a>	<a href="#">ADMISSION METHOD</a>
<b>Emergency Journey</b>	
<a href="#">Emergency Transport Request</a>	
<b>General Practitioner Name</b>	
<a href="#">PERSON NAME</a>	
<b>GMC or GDC Reference Number</b>	
<a href="#">CARE PROFESSIONAL</a>	<a href="#">CARE PROFESSIONAL IDENTIFIER</a>
<b>Local Patient Identifier</b>	
<a href="#">PATIENT ORGANISATION</a>	<a href="#">LOCAL PATIENT IDENTIFIER</a>
<b>Maternity Admission</b>	
<a href="#">Hospital Provider Spell</a>	<a href="#">ADMISSION METHOD</a>
<b>Neonate</b>	

<a href="#">PATIENT</a>	
<b>Nurse Identifier</b>	
<a href="#">CARE PROFESSIONAL</a>	<a href="#">CARE PROFESSIONAL IDENTIFIER</a>
<b>Nurse Name</b>	
<a href="#">PERSON NAME</a>	
<b>Ordinary Admission</b>	
<a href="#">Hospital Provider Spell</a>	<a href="#">PATIENT CLASSIFICATION</a>
<b>Organisation Postcode</b>	
<a href="#">ADDRESS</a>	<a href="#">POSTCODE</a>
<a href="#">ADDRESS ASSOCIATION</a>	
<b>Organisation Address</b>	
<a href="#">ADDRESS ASSOCIATION</a>	<a href="#">ADDRESS ASSOCIATION TYPE</a>
<b>Patient Name</b>	
<a href="#">PERSON NAME</a>	
<b>Patients Usual Address</b>	
<a href="#">ADDRESS ASSOCIATION</a>	<a href="#">ADDRESS ASSOCIATION TYPE</a>
<b>Planned Admission</b>	
<a href="#">ELECTIVE ADMISSION LIST ENTRY</a>	<a href="#">ELECTIVE ADMISSION TYPE</a>
<b>Postcode of Usual Address</b>	
<a href="#">ADDRESS</a>	<a href="#">POSTCODE</a>
<b>Regular Day Admission</b>	
<a href="#">Hospital Provider Spell</a>	<a href="#">PATIENT CLASSIFICATION</a>
<b>Sex</b>	
<a href="#">PERSON GENDER</a>	<a href="#">PERSON GENDER CODE</a>
<a href="#">PERSON GENDER CODE CURRENT</a>	
<a href="#">PERSON GENDER CODE AT REGISTRATION</a>	
<b>Special/Planned Journey</b>	
<a href="#">Special Transport Request</a>	
<a href="#">Planned Transport Request</a>	
<b>Telephone Number</b>	
<a href="#">COMMUNICATION CONTACT INFORMATION</a>	<a href="#">COMMUNICATION CONTACT METHOD</a>
	<a href="#">COMMUNICATION CONTACT STRING</a>
<b>Two Man/One Man Crew</b>	
<a href="#">TRANSPORT REQUIREMENT</a>	<a href="#">TRANSPORT NEED</a>
<b>TCI (To Come In Date)</b>	
<a href="#">OFFER OF ADMISSION</a>	<a href="#">OFFERED FOR ADMISSION DATE</a>
<b>Waiting List Admission</b>	
<a href="#">ELECTIVE ADMISSION LIST ENTRY</a>	<a href="#">ELECTIVE ADMISSION TYPE</a>
<b>Ward Transfer</b>	
<a href="#">Ward Stay</a>	<a href="#">ACTIVITY DATE</a> of the <a href="#">ACTIVITY DATE TYPE</a> <a href="#">End Date</a>

## TRANSPORT REQUEST

Change to Class: Changed Attributes, Description

A request or emergency call made for a [PATIENT TRANSPORT JOURNEY](#).

[TRANSPORT REQUEST TYPE](#) provides a list of [TRANSPORT REQUESTS](#).

---

## TRANSPORT REQUEST

---

Change to Class: Changed Attributes, Description

*Attributes of this Class are:*

K        TRANSPORT REQUEST DATE  
K        TRANSPORT REQUEST NUMBER  
          ARRIVAL TIME  
          ARRIVAL TIME REQUESTED  
~~JOURNEY REASON~~  
          REQUEST RESOLVED BY TELEPHONE ONLY  
          RESPONSE CATEGORY  
          TRANSPORT REQUEST CALL CONNECT TIME  
          TRANSPORT REQUEST TYPE

---

## TRANSPORT REQUEST INCIDENT

---

Change to Class: Changed Attributes, Relationships

*Attributes of this Class are:*

K        TRANSPORT REQUEST INCIDENT REFERENCE NUMBER  
          [AMBULANCE ARRIVAL TIME](#)  
          FIRST RESPONSE AMBULANCE CANCELLED  
          TRANSPORT REQUEST FIRST RESPONSE ARRIVAL TIME  
          [TRANSPORT VEHICLE TYPE](#)

---

## TRANSPORT REQUEST INCIDENT

---

Change to Class: Changed Attributes, Relationships

*Each TRANSPORT REQUEST INCIDENT*

    must be associated with one and only one SERVICE  
    may be resultant in one or more ACTIVITY  
    may be recorded by one and only one ORGANISATION  
    may be reported by one or more TRANSPORT REQUEST  
    ~~may be the reason for one or more TRANSPORT RESPONSE MOBILISATION~~

---

## TRANSPORT RESPONSE MOBILISATION (RETIRED) renamed from TRANSPORT RESPONSE MOBILISATION

---

Change to Class: Changed Attributes, Relationships, status to Retired, Description, Name

This is the [Emergency Response](#) by an [Ambulance Service](#) that has been deployed or despatched to a particular [TRANSPORT REQUEST INCIDENT](#). **This item has been retired from the NHS Data Model and Dictionary.**

**The last live version of this item is available in the February 2014 release of the NHS Data Model and Dictionary.**

Access to this version can be obtained by emailing [information.standards@hscic.gov.uk](mailto:information.standards@hscic.gov.uk) with "NHS Data Model and Dictionary - Archive Request" in the email subject line.

---

## TRANSPORT RESPONSE MOBILISATION (RETIRED)\_ renamed from TRANSPORT RESPONSE MOBILISATION

---

Change to Class: Changed Attributes, Relationships, status to Retired, Description, Name

*Attributes of this Class are:*

- ✦ ~~TRANSPORT VEHICLE MOBILISATION IDENTIFIER~~
- ~~AMBULANCE ARRIVAL TIME~~
- ~~TRANSPORT VEHICLE MOBILISED DATE~~
- ~~TRANSPORT VEHICLE MOBILISED TIME~~
- ~~TRANSPORT VEHICLE TYPE~~

*This class has no attributes.*

---

## TRANSPORT RESPONSE MOBILISATION (RETIRED)\_ renamed from TRANSPORT RESPONSE MOBILISATION

---

Change to Class: Changed Attributes, Relationships, status to Retired, Description, Name

*Each TRANSPORT RESPONSE MOBILISATION*

- ✦ ~~must be in response to one and only one TRANSPORT REQUEST INCIDENT~~
  - ~~may be used for one or more PATIENT TRANSPORT JOURNEY~~
- 

## TRANSPORT RESPONSE MOBILISATION (RETIRED)\_ renamed from TRANSPORT RESPONSE MOBILISATION

---

Change to Class: Changed Attributes, Relationships, status to Retired, Description, Name

- Changed Attributes
  - Changed Relationships
  - Retired TRANSPORT RESPONSE MOBILISATION
  - Changed Description
  - Changed Name from Data\_Dictionary.Classes.T.TRANSPORT\_RESPONSE\_MOBILISATION to Retired.Data\_Dictionary.Classes.T.TRANSPORT\_RESPONSE\_MOBILISATION
- 

## JOURNEY REASON (RETIRED)\_ renamed from JOURNEY REASON

---

Change to Attribute: Changed status to Retired, Description, Name

The purpose for which a [Planned Transport Request](#) is made. **This item has been retired from the NHS Data Model and Dictionary.**

**Classification:** **The last live version of this item is available in the February 2014 release of the NHS Data Model and Dictionary.**

- ~~a: Admission, discharge or transfer (including day surgery patients)~~
- ~~b: To attend out-patient clinic~~
- ~~c: To attend for remedial treatment (physiotherapy, radiotherapy, etc)~~
- ~~d: To attend a day care facility~~

Access to this version can be obtained by emailing [information.standards@hscic.gov.uk](mailto:information.standards@hscic.gov.uk) with "NHS



**Data Model and Dictionary - Archive Request" in the email subject line.**

---

## JOURNEY REASON (RETIRED)\_ renamed from JOURNEY REASON

---

Change to Attribute: Changed status to Retired, Description, Name

- Retired JOURNEY REASON
- Changed Description
- Changed Name from Data\_Dictionary.Attributes.J.JOURNEY\_REASON to Retired.Data\_Dictionary.Attributes.J.JOURNEY\_REASON

---

## TRANSPORT NEED (RETIRED)\_ renamed from TRANSPORT NEED

---

Change to Attribute: Changed status to Retired, Description, Name

The type of transport and assistance required by the [PATIENT](#). In order to make the best use of its resources, an [Ambulance Service](#) may provide a different type of vehicle or more assistance than that required by the [PATIENT](#), but the needs of the [PATIENT](#) and not the transport actually used should be recorded. **This item has been retired from the NHS Data Model and Dictionary.**

***National Codes:* The last live version of this item is available in the February 2014 release of the NHS Data Model and Dictionary.**

- 1 Stretcher (synonym 'ambulance'). The [PATIENT](#) is recumbent, semi-recumbent, a maternity case or is likely to need intensive ambulance aid during the journey.
- 2 Crew of 2 (synonym 'car 2'). The [PATIENT](#) can travel sitting but needs the assistance of a driver and attendant to get into or out of the vehicle.
- 3 Crew of 1 (synonym 'car'). The [PATIENT](#) can travel sitting and only needs the assistance of a driver to get into or out of the vehicle.

**Access to this version can be obtained by emailing [information.standards@hscic.gov.uk](mailto:information.standards@hscic.gov.uk) with "NHS Data Model and Dictionary - Archive Request" in the email subject line.**

---

## TRANSPORT NEED (RETIRED)\_ renamed from TRANSPORT NEED

---

Change to Attribute: Changed status to Retired, Description, Name

- Retired TRANSPORT NEED
- Changed Description
- Changed Name from Data\_Dictionary.Attributes.T.Tran.TRANSPORT\_NEED to Retired.Data\_Dictionary.Attributes.T.TRANSPORT\_NEED

---

## TRANSPORT REQUEST TYPE (RETIRED)\_ renamed from TRANSPORT REQUEST TYPE

---

Change to Attribute: Changed status to Retired, Description, Name

The type of [TRANSPORT REQUEST](#). **This item has been retired from the NHS Data Model and Dictionary.**

***National Codes:* The last live version of this item is available in the February 2014 release of the NHS Data Model and Dictionary.**

- 01 [Emergency Transport Request](#)

02 Urgent Transport Request (Retired April 2007)

03 [Special Transport Request](#)

04 [Planned Transport Request](#)

Access to this version can be obtained by emailing [information.standards@hscic.gov.uk](mailto:information.standards@hscic.gov.uk) with "NHS Data Model and Dictionary - Archive Request" in the email subject line.

---

## TRANSPORT REQUEST TYPE (RETIRED)\_ renamed from TRANSPORT REQUEST TYPE

---

Change to Attribute: Changed status to Retired, Description, Name

- Retired TRANSPORT REQUEST TYPE
- Changed Description
- Changed Name from Data\_Dictionary.Attributes.T.Tran.TRANSPORT\_REQUEST\_TYPE to Retired.Data\_Dictionary.Attributes.T.TRANSPORT\_REQUEST\_TYPE

---

## TRANSPORT RESPONSE MOBILISATION DATE (RETIRED)\_ renamed from TRANSPORT RESPONSE MOBILISATION DATE

---

Change to Attribute: Changed status to Retired, Description, Name

~~The DATE of a TRANSPORT\_RESPONSE\_MOBILISATION.~~ This item has been retired from the NHS Data Model and Dictionary.

The last live version of this item is available in the February 2014 release of the NHS Data Model and Dictionary.

Access to this version can be obtained by emailing [information.standards@hscic.gov.uk](mailto:information.standards@hscic.gov.uk) with "NHS Data Model and Dictionary - Archive Request" in the email subject line.

---

## TRANSPORT RESPONSE MOBILISATION DATE (RETIRED)\_ renamed from TRANSPORT RESPONSE MOBILISATION DATE

---

Change to Attribute: Changed status to Retired, Description, Name

- Retired TRANSPORT RESPONSE MOBILISATION DATE
- Changed Description
- Changed Name from Data\_Dictionary.Attributes.T.Tran.TRANSPORT\_RESPONSE\_MOBILISATION\_DATE to Retired.Data\_Dictionary.Attributes.T.TRANSPORT\_RESPONSE\_MOBILISATION\_DATE

---

## TRANSPORT RESPONSE MOBILISATION IDENTIFIER (RETIRED)\_\_\_ renamed from TRANSPORT RESPONSE MOBILISATION IDENTIFIER

---

Change to Attribute: Changed status to Retired, Description, Name

~~A unique identifier of a TRANSPORT\_RESPONSE\_MOBILISATION.~~ This item has been retired from the NHS Data Model and Dictionary.

The last live version of this item is available in the February 2014 release of the NHS Data Model and Dictionary.

Access to this version can be obtained by emailing [information.standards@hscic.gov.uk](mailto:information.standards@hscic.gov.uk) with "NHS Data Model and Dictionary - Archive Request" in the email subject line.

---

## TRANSPORT RESPONSE MOBILISATION IDENTIFIER (RETIRED) renamed from TRANSPORT RESPONSE MOBILISATION IDENTIFIER

---

Change to Attribute: Changed status to Retired, Description, Name

- Retired TRANSPORT RESPONSE MOBILISATION IDENTIFIER
  - Changed Description
  - Changed Name from Data\_Dictionary.Attributes.T.Tran.TRANSPORT\_RESPONSE\_MOBILISATION\_IDENTIFI ER to Retired.Data\_Dictionary.Attributes.T.TRANSPORT\_RESPONSE\_MOBILISATION\_IDENTIFI ER
- 

## TRANSPORT RESPONSE MOBILISATION TIME (RETIRED) renamed from TRANSPORT RESPONSE MOBILISATION TIME

---

Change to Attribute: Changed status to Retired, Description, Name

The TIME of a TRANSPORT\_RESPONSE\_MOBILISATION. The TIME should be recorded using the 24 hour clock. **This item has been retired from the NHS Data Model and Dictionary.**

**The last live version of this item is available in the February 2014 release of the NHS Data Model and Dictionary.**

**Access to this version can be obtained by emailing [information.standards@hscic.gov.uk](mailto:information.standards@hscic.gov.uk) with "NHS Data Model and Dictionary - Archive Request" in the email subject line.**

---

## TRANSPORT RESPONSE MOBILISATION TIME (RETIRED) renamed from TRANSPORT RESPONSE MOBILISATION TIME

---

Change to Attribute: Changed status to Retired, Description, Name

- Retired TRANSPORT RESPONSE MOBILISATION TIME
  - Changed Description
  - Changed Name from Data\_Dictionary.Attributes.T.Tran.TRANSPORT\_RESPONSE\_MOBILISATION\_TIME to Retired.Data\_Dictionary.Attributes.T.TRANSPORT\_RESPONSE\_MOBILISATION\_TIME
- 

For enquiries about this Change Request, please email [information.standards@hscic.gov.uk](mailto:information.standards@hscic.gov.uk)