

Health and Social Care Information Centre

NHS Data Model and Dictionary Service

Type:	Data Dictionary Change Notice
Reference:	1440
Version No:	1.0
Subject:	Retirement of Review of Central Returns (ROCR) - Genitourinary Medicine Access Monthly Monitoring Data Set
Effective Date:	Immediate
Reason for Change:	Retirement of Data Standards
Publication Date:	24 January 2014

Background:

The recent Department of Health Fundamental Review of Data Returns has recommended the discontinuation of a number of regular data collections.

A number of Central Returns are to be discontinued as they will cease after the conclusion of the Fundamental Review.

This Data Dictionary Change Notice (DDCN) retires the following Data Sets in the NHS Data Model and Dictionary which are discontinued.

- Genitourinary Medicine Access Monthly Monitoring (GUMAMM) Data Set

To view a demonstration on "How to Read an NHS Data Model and Dictionary Change Request", visit the NHS Data Model and Dictionary help pages at: http://www.datadictionary.nhs.uk/Flash_Files/changerequest.htm.

Note: if the web page does not open, please copy the link and paste into the web browser.

Summary of changes:

Diagrams

[APPOINTMENTS DIAGRAM](#)

Changed Diagram

[COMMUNITY DIAGRAM](#)

Changed Diagram

[HEALTH PROGRAMME DIAGRAM](#)

Changed Diagram

[LISTS DIAGRAM](#)

Changed Diagram

Data Set

[GENITOURINARY MEDICINE ACCESS MONTHLY MONITORING DATA SET \(RETIRED\)](#) renamed from [GENITOURINARY MEDICINE ACCESS MONTHLY MONITORING DATA SET](#)

Changed Description, Name, status to Retired

Supporting Information

[CENTRAL RETURN DATA SETS MENU](#)

Changed Description

[GENITOURINARY CARE CONTACT \(RETIRED\)](#) renamed from [GENITOURINARY CARE CONTACT](#)

Changed Description, Name, status to Retired

[GENITOURINARY CARE CONTACT DATE \(RETIRED\)](#) renamed from [GENITOURINARY CARE CONTACT DATE](#)

Changed Description, Name, status to Retired

[GENITOURINARY MEDICINE ACCESS MONTHLY MONITORING DATA SET OVERVIEW \(RETIRED\)](#) renamed from [GENITOURINARY MEDICINE ACCESS MONTHLY MONITORING DATA SET OVERVIEW](#)

Changed Description, Name, status to Retired

[SCHEDULED APPOINTMENT \(RETIRED\)](#) renamed from [SCHEDULED APPOINTMENT](#)

Changed Description, Name, status to Retired

[UNSCHEDULED APPOINTMENT \(RETIRED\)](#) renamed from [UNSCHEDULED APPOINTMENT](#)

Changed Description, Name, status to Retired

Class Definitions

[APPOINTMENT](#)

Changed Attributes

[APPOINTMENT OFFER](#)

Changed Attributes

[CARE CONTACT](#)

Changed Attributes

Attribute Definitions

[ACTIVITY DATE TYPE](#)

Changed Description

[APPOINTMENT BOOKING TYPE \(RETIRED\)](#) renamed from [APPOINTMENT BOOKING TYPE](#)

Changed Description, Name, status to Retired

[APPOINTMENT OFFER REFUSED REASON \(RETIRED\)](#) renamed from [APPOINTMENT OFFER REFUSED REASON](#)

Changed Description, Name, status to Retired

[CARE CONTACT SERVICE TYPE FOR CHILDREN AND YOUNG PEOPLE'S HEALTH SERVICE SECONDARY USES](#)

Changed Description

[CARE CONTACT TYPE](#)

Changed Description

[GENITOURINARY CONTACT TYPE CODE \(RETIRED\)](#) renamed from [GENITOURINARY CONTACT TYPE CODE](#)

Changed Description, Name, status to Retired

[PATIENT PREFERRED CLINIC INDICATOR \(RETIRED\)](#) renamed from [PATIENT PREFERRED CLINIC INDICATOR](#)

Changed Description, Name, status to Retired

<u>PATIENT REPORTED SYMPTOMS INDICATOR (RETIRED)</u> renamed from <u>PATIENT REPORTED SYMPTOMS INDICATOR</u>	Changed Description, Name, status to Retired
<u>PATIENT REPORTED WAIT (RETIRED)</u> renamed from <u>PATIENT REPORTED WAIT</u>	Changed Description, Name, status to Retired
Data Elements	
<u>CLINIC ATTENDANCES (HIV) TOTAL (RETIRED)</u> renamed from <u>CLINIC ATTENDANCES (HIV) TOTAL</u>	Changed Description, Name, status to Retired
<u>CLINIC FIRST ATTENDANCES (HIV) TOTAL (RETIRED)</u> renamed from <u>CLINIC FIRST ATTENDANCES (HIV) TOTAL</u>	Changed Description, Name, status to Retired
<u>GENITOURINARY ALL ATTENDANCES TOTAL (RETIRED)</u> renamed from <u>GENITOURINARY ALL ATTENDANCES TOTAL</u>	Changed Description, Name, status to Retired
<u>GENITOURINARY FIRST APPOINTMENTS MISSED TOTAL (RETIRED)</u> renamed from <u>GENITOURINARY FIRST APPOINTMENTS MISSED TOTAL</u>	Changed Description, Name, status to Retired
<u>GENITOURINARY FIRST APPOINTMENTS MISSED WITHIN 2 DAYS TOTAL (RETIRED)</u> renamed from <u>GENITOURINARY FIRST APPOINTMENTS MISSED WITHIN 2 DAYS TOTAL</u>	Changed Description, Name, status to Retired
<u>GENITOURINARY FIRST APPOINTMENTS OFFERED WITHIN 2 DAYS TOTAL (RETIRED)</u> renamed from <u>GENITOURINARY FIRST APPOINTMENTS OFFERED WITHIN 2 DAYS TOTAL</u>	Changed Description, Name, status to Retired
<u>GENITOURINARY FIRST APPOINTMENTS SEEN AFTER 2 DAYS - CLINICAL REASON TOTAL (RETIRED)</u> renamed from <u>GENITOURINARY FIRST APPOINTMENTS SEEN AFTER 2 DAYS - CLINICAL REASON TOTAL</u>	Changed Description, Name, status to Retired
<u>GENITOURINARY FIRST APPOINTMENTS SEEN AFTER 2 DAYS - PATIENT CHOICE TOTAL (RETIRED)</u> renamed from <u>GENITOURINARY FIRST APPOINTMENTS SEEN AFTER 2 DAYS - PATIENT CHOICE TOTAL</u>	Changed Description, Name, status to Retired
<u>GENITOURINARY FIRST APPOINTMENTS SEEN AFTER 2 DAYS - SPECIALIST CLINIC TOTAL (RETIRED)</u> renamed from <u>GENITOURINARY FIRST APPOINTMENTS SEEN AFTER 2 DAYS - SPECIALIST CLINIC TOTAL</u>	Changed Description, Name, status to Retired
<u>GENITOURINARY FIRST ATTENDANCES - PATIENT PREFERRED CLINIC TOTAL (RETIRED)</u> renamed from <u>GENITOURINARY FIRST ATTENDANCES - PATIENT PREFERRED CLINIC TOTAL</u>	Changed Description, Name, status to Retired
<u>GENITOURINARY FIRST ATTENDANCES SEEN AFTER 10 DAYS TOTAL (RETIRED)</u> renamed from <u>GENITOURINARY FIRST ATTENDANCES SEEN AFTER 10 DAYS TOTAL</u>	Changed Description, Name, status to Retired
<u>GENITOURINARY FIRST ATTENDANCES SEEN WITHIN 2 DAYS TOTAL (RETIRED)</u> renamed from <u>GENITOURINARY FIRST ATTENDANCES SEEN WITHIN 2 DAYS TOTAL</u>	Changed Description, Name, status to Retired
<u>GENITOURINARY FIRST ATTENDANCES TOTAL (RETIRED)</u> renamed from <u>GENITOURINARY FIRST ATTENDANCES TOTAL</u>	Changed Description, Name, status to Retired
<u>GENITOURINARY FIRST ATTENDANCES - UNSCHEDULED TOTAL (RETIRED)</u> renamed from <u>GENITOURINARY FIRST ATTENDANCES - UNSCHEDULED TOTAL</u>	Changed Description, Name, status to Retired
<u>PATIENT PERSPECTIVE ON WAITING TIMES - SCHEDULED ATTENDANCES WITHIN 2 DAYS TOTAL (RETIRED)</u> renamed from <u>PATIENT PERSPECTIVE ON WAITING TIMES - SCHEDULED ATTENDANCES WITHIN 2 DAYS TOTAL</u>	Changed Description, Name, status to Retired
<u>PATIENT PERSPECTIVE ON WAITING TIMES - UNSCHEDULED ATTENDANCES WITHIN 2 DAYS TOTAL (RETIRED)</u> renamed from <u>PATIENT PERSPECTIVE ON WAITING TIMES - UNSCHEDULED ATTENDANCES WITHIN 2 DAYS TOTAL</u>	Changed Description, Name, status to Retired
<u>PATIENTS REGISTERED BUT NOT OFFERED AN APPOINTMENT TOTAL (RETIRED)</u> renamed from <u>PATIENTS REGISTERED BUT NOT OFFERED AN APPOINTMENT TOTAL</u>	Changed Description, Name, status to Retired
<u>PATIENTS REPORTING SYMPTOMS TOTAL (RETIRED)</u> renamed from <u>PATIENTS REPORTING SYMPTOMS TOTAL</u>	Changed Description, Name, status to Retired
<u>SCHEDULED ATTENDANCES - RESPONSES TO PATIENT WAIT QUESTION TOTAL (RETIRED)</u> renamed from <u>SCHEDULED ATTENDANCES - RESPONSES TO PATIENT WAIT QUESTION TOTAL</u>	Changed Description, Name, status to Retired
<u>UNSCHEDULED ATTENDANCES - RESPONSES TO PATIENT WAIT QUESTION TOTAL (RETIRED)</u> renamed from <u>UNSCHEDULED ATTENDANCES - RESPONSES TO PATIENT WAIT QUESTION TOTAL</u>	Changed Description, Name, status to Retired

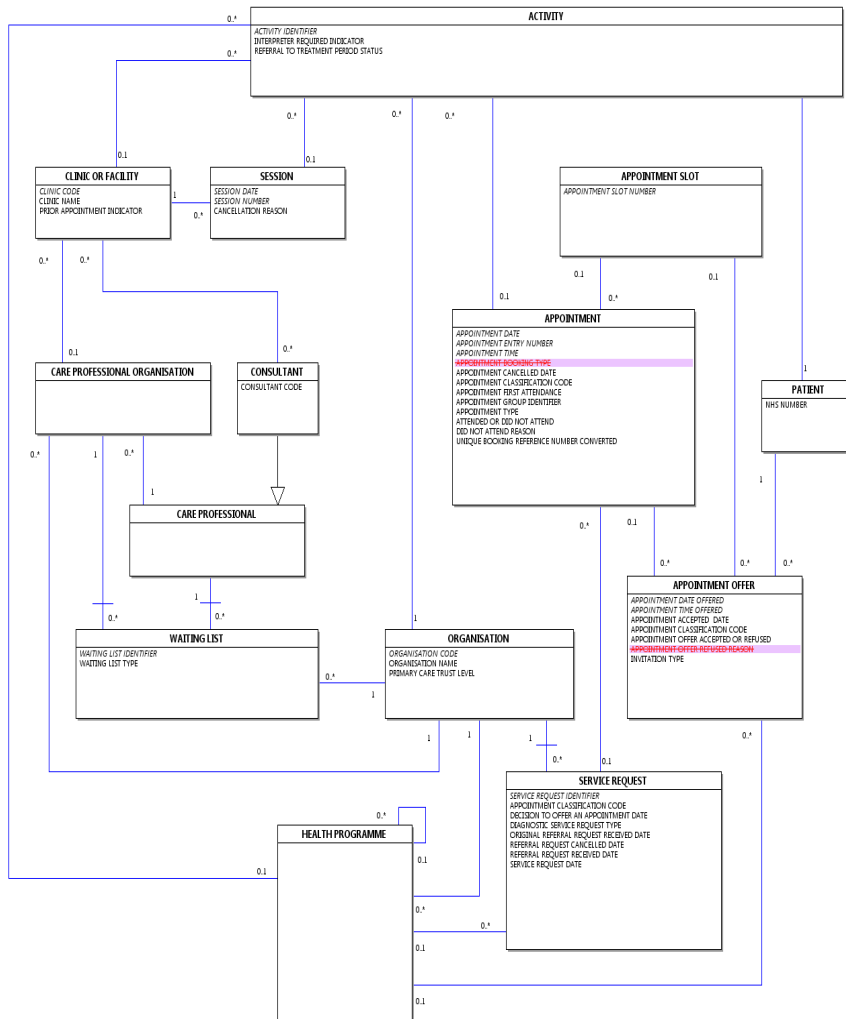
Date: 24 January 2014

Sponsor: Ken Lunn, Head of Information Standards Delivery, Health and Social Care Information Centre

Note: New text is shown with a blue background. Deleted text is crossed out. Retired text is shown in grey. Within the Diagrams deleted classes and relationships are red, changed items are blue and new items are green.

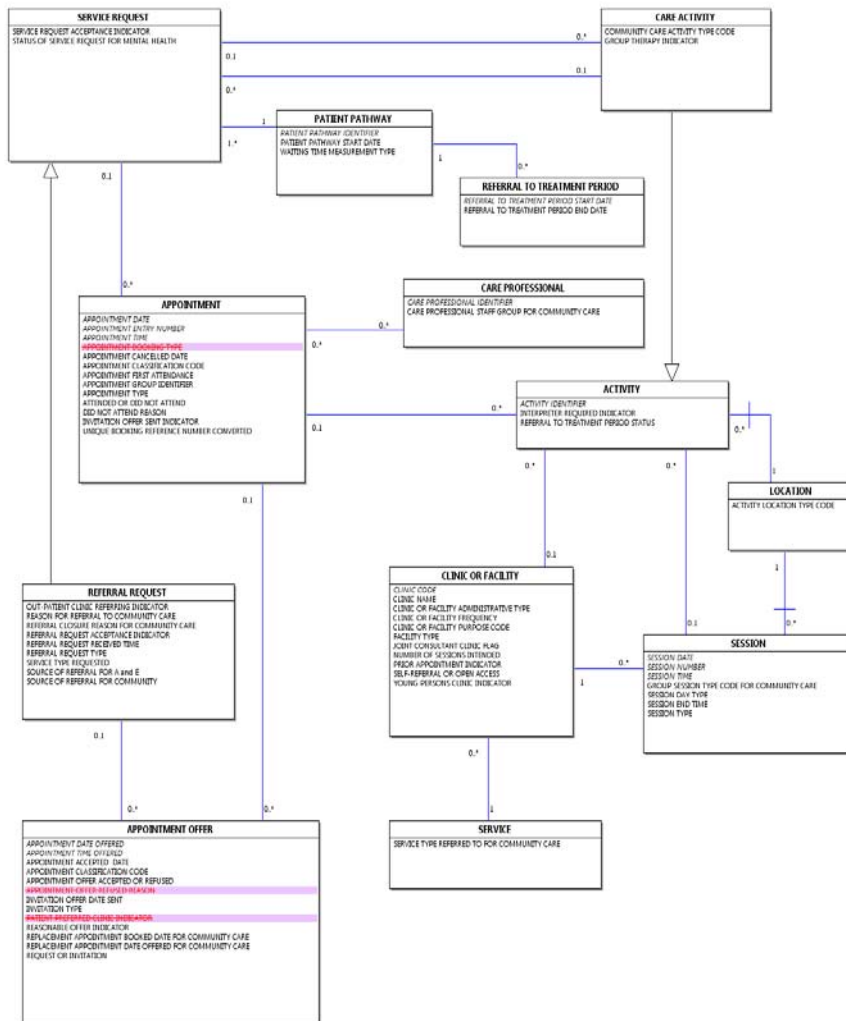
APPOINTMENTS DIAGRAM

Change to Diagram: Changed Diagram



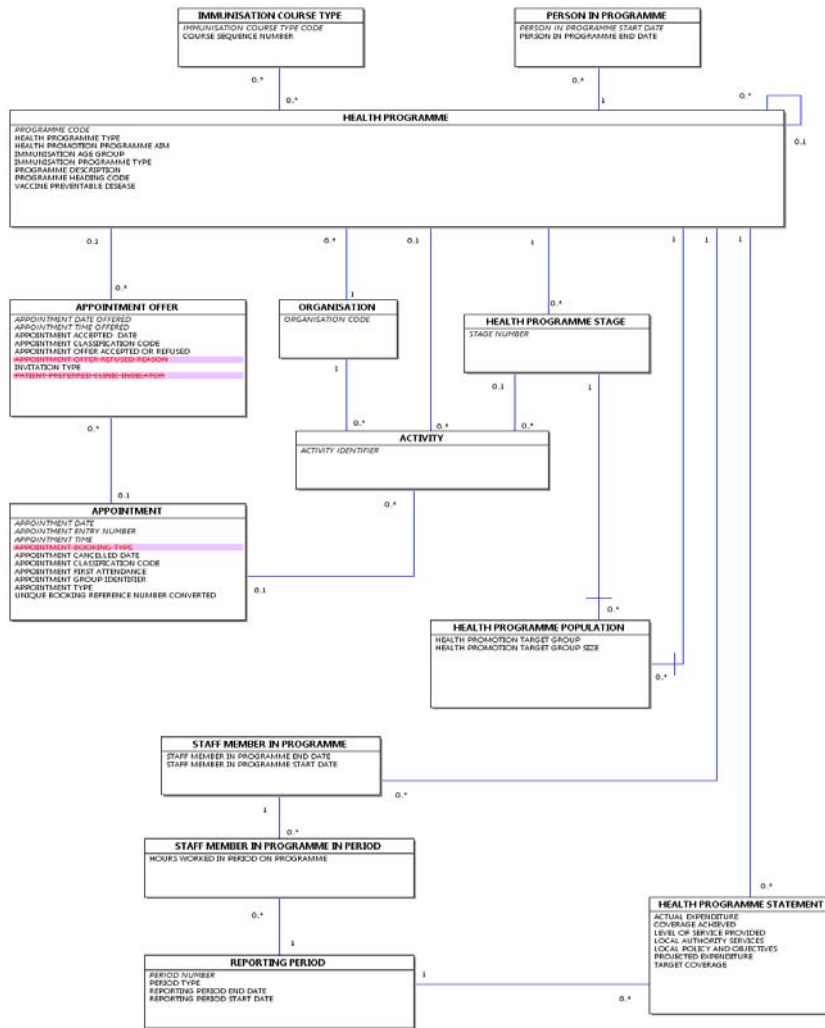
COMMUNITY DIAGRAM

Change to Diagram: Changed Diagram



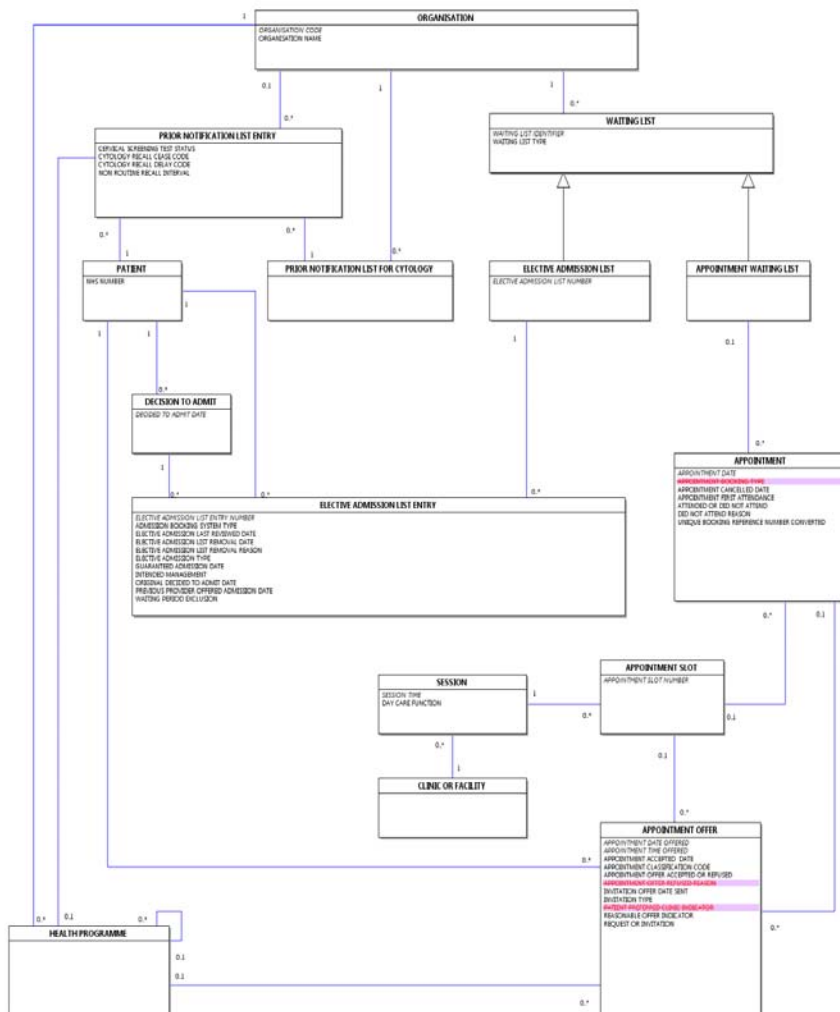
HEALTH PROGRAMME DIAGRAM

Change to Diagram: Changed Diagram



LISTS DIAGRAM

Change to Diagram: Changed Diagram



GENITOURINARY MEDICINE ACCESS MONTHLY MONITORING DATA SET (RETIRED) renamed from GENITOURINARY MEDICINE ACCESS MONTHLY MONITORING DATA SET

Change to Data Set: Changed Description, Name, status to Retired

[Genitourinary Medicine Access Monthly Monitoring Data Set Overview](#) This item has been retired from the NHS Data Model and Dictionary.

The [Genitourinary Medicine Access Monthly Monitoring Data Set](#) carries the data for monitoring access to Genitourinary Medicine services. The last live version of this item is available in the November 2013 release of the NHS Data Model and Dictionary.

Data Set Data Elements
To carry the details of the reporting period and the organisations providing and commissioning Genitourinary Medicine Services by site code of treatment: One occurrence per site code of treatment is required:
REPORTING PERIOD START DATE
REPORTING PERIOD END DATE
ORGANISATION CODE (CODE OF PROVIDER)
ORGANISATION CODE (CODE OF COMMISSIONER)
SITE CODE (OF TREATMENT)
Attendances:
GENITOURINARY ALL ATTENDANCES TOTAL
GENITOURINARY FIRST ATTENDANCES TOTAL
GENITOURINARY FIRST ATTENDANCES SEEN WITHIN 2 DAYS TOTAL
GENITOURINARY FIRST ATTENDANCES SEEN AFTER 10 DAYS TOTAL

GENITOURINARY FIRST ATTENDANCES - UNSCHEDULED TOTAL
First Appointments Missed:
GENITOURINARY FIRST APPOINTMENTS MISSED TOTAL
GENITOURINARY FIRST APPOINTMENTS MISSED WITHIN 2 DAYS TOTAL
First appointments offered within 2 normal working days (excludes bank holidays and weekends):
GENITOURINARY FIRST APPOINTMENTS OFFERED WITHIN 2 DAYS TOTAL
Patients reporting symptoms:
PATIENTS REPORTING SYMPTOMS TOTAL
First attendances seen after 2 normal working days (excludes bank holidays and weekends):
GENITOURINARY FIRST APPOINTMENTS SEEN AFTER 2 DAYS - PATIENT CHOICE TOTAL
GENITOURINARY FIRST APPOINTMENTS SEEN AFTER 2 DAYS - CLINICAL REASON TOTAL
GENITOURINARY FIRST APPOINTMENTS SEEN AFTER 2 DAYS - SPECIALIST CLINIC TOTAL
Patient perspective:
PATIENT PERSPECTIVE ON WAITING TIMES - UNSCHEDULED ATTENDANCES WITHIN 2 DAYS TOTAL
PATIENT PERSPECTIVE ON WAITING TIMES - SCHEDULED ATTENDANCES WITHIN 2 DAYS TOTAL
UNSCHEDULED ATTENDANCES - RESPONSES TO PATIENT WAIT QUESTION TOTAL
SCHEDULED ATTENDANCES - RESPONSES TO PATIENT WAIT QUESTION TOTAL
GENITOURINARY FIRST ATTENDANCES - PATIENT PREFERRED CLINIC TOTAL
Patients registered but not seen:
PATIENTS REGISTERED BUT NOT OFFERED AN APPOINTMENT TOTAL

Access to this version can be obtained by emailing information.standards@hscic.gov.uk with "NHS Data Model and Dictionary - Archive Request" in the email subject line.

GENITOURINARY MEDICINE ACCESS MONTHLY MONITORING DATA SET (RETIRED) renamed from GENITOURINARY MEDICINE ACCESS MONTHLY MONITORING DATA SET

Change to Data Set: Changed Description, Name, status to Retired

- Changed Description
- Changed Name from Data_Dictionary.Messages.Central_Return_Data_Sets.Data_Sets.Genitourinary_Medicine_Access_Monthly_Monitoring_Data_Set to Retired.Data_Dictionary.Messages.Central_Returns_Data_Sets.Genitourinary_Medicine_Access_Monthly_Monitoring_Data_Set
- Retired Genitourinary Medicine Access Monthly Monitoring Data Set

CENTRAL RETURN DATA SETS MENU

Change to Supporting Information: Changed Description

- [Ambulance Services \(KA34\)](#)
- [Breast Screening \(KC62\)](#)
- [Breast Screening \(KC63\)](#)
- [Diagnostics Waiting Times and Activity](#)
- [Diagnostics Waiting Times Census](#)
- [Genitourinary Medicine Access Monthly Monitoring](#)
- [HPV Immunisation Programme Vaccine Monitoring Annual](#)
- [HPV Immunisation Programme Vaccine Monitoring Monthly](#)
- [Immunisation Programmes Activity \(KC50\)](#)
- [Mixed Sex Accommodation](#)
- [National Direct Access Audiology Waiting Times](#)
- [NHS Continuing Healthcare](#)
- [NHS-Funded Nursing Care](#)
- [Quarterly Bed Availability and Occupancy \(KH03\)](#)
- [Quarterly Monitoring Cancelled Operations](#)
- [Referral to Treatment](#)
- [Stop Smoking Services Quarterly](#)
- [Venous Thromboembolism Risk Assessment](#)

GENITOURINARY CARE CONTACT (RETIRED) renamed from GENITOURINARY CARE CONTACT

Change to Supporting Information: Changed Description, Name, status to Retired

[Genitourinary Care Contact](#) is a [CARE CONTACT](#). This item has been retired from the NHS Data Model and Dictionary.

An attendance of a [PATIENT](#) at a [CLINIC OR FACILITY](#) to see or be in contact with a [CARE PROFESSIONAL](#) as part of a [Sexual Health And HIV Episode](#). The last live version of this item is available in the November 2013 release of the NHS Data Model and Dictionary.

[Genitourinary Care Contact](#) is a [CARE CONTACT](#) where the [CARE CONTACT TYPE](#) is National Code 40 - [Genitourinary Care Contact](#). Access to this

version can be obtained by emailing information.standards@hscic.gov.uk with "NHS Data Model and Dictionary - Archive Request" in the email subject line.

Information recorded for a [Genitourinary Care Contact](#) includes:

[ATTENDANCE DATE](#)
[ATTENDANCE IDENTIFIER](#)
[FIRST ATTENDANCE](#)
[APPOINTMENT BOOKING TYPE](#)
[APPOINTMENT OFFER ACCEPTED OR REFUSED](#)
[ATTENDED OR DID NOT ATTEND](#)
[PATIENT REPORTED SYMPTOMS INDICATOR](#)
[PATIENT REPORTED WAIT](#)
[GENITOURINARY CONTACT TYPE CODE](#)
[PATIENT PREFERRED CLINIC INDICATOR](#)

GENITOURINARY CARE CONTACT (RETIRED)_ renamed from GENITOURINARY CARE CONTACT

Change to Supporting Information: Changed Description, Name, status to Retired

- Changed Description
- Changed Name from [Data_Dictionary.NHS_Business_Definitions.G.Genitourinary_Care_Contact](#) to [Retired.Data_Dictionary.NHS_Business_Definitions.G.Genitourinary_Care_Contact](#)
- Retired Genitourinary Care Contact

GENITOURINARY CARE CONTACT DATE (RETIRED)_ renamed from GENITOURINARY CARE CONTACT DATE

Change to Supporting Information: Changed Description, Name, status to Retired

[Genitourinary Care Contact Date](#) is an [ACTIVITY DATE TIME](#). ~~This item has been retired from the NHS Data Model and Dictionary.~~

The [DATE](#) on which a [PATIENT](#) attends a [CLINIC OR FACILITY](#) to see or be in contact with a [CARE PROFESSIONAL](#) as part of a [Sexual Health And HIV Episode](#). ~~The last live version of this item is available in the November 2013 release of the NHS Data Model and Dictionary.~~

~~Access to this version can be obtained by emailing information.standards@hscic.gov.uk with "NHS Data Model and Dictionary - Archive Request" in the email subject line.~~

GENITOURINARY CARE CONTACT DATE (RETIRED)_ renamed from GENITOURINARY CARE CONTACT DATE

Change to Supporting Information: Changed Description, Name, status to Retired

- Changed Description
- Changed Name from [Data_Dictionary.NHS_Business_Definitions.G.Genitourinary_Care_Contact_Date](#) to [Retired.Data_Dictionary.NHS_Business_Definitions.G.Genitourinary_Care_Contact_Date](#)
- Retired Genitourinary Care Contact Date

GENITOURINARY MEDICINE ACCESS MONTHLY MONITORING DATA SET OVERVIEW (RETIRED)_ renamed from GENITOURINARY MEDICINE ACCESS MONTHLY MONITORING DATA SET OVERVIEW

Change to Supporting Information: Changed Description, Name, status to Retired

The [Department of Health](#) requires this data set from NHS providers of specialised services, where the primary function of the specialist clinical multidisciplinary team is concerned with the provision of screening, diagnosis and management of sexually transmissible infections and related genital medical conditions. In line with the national strategy for sexual health, Human Immunodeficiency Virus (HIV), genitourinary medicine services are represented as level three providers. This information is collected via the [Genitourinary Medicine Access Monthly Monitoring Data Set](#). ~~This item has been retired from the NHS Data Model and Dictionary.~~

The [Genitourinary Medicine Access Monthly Monitoring Data Set](#) provides essential information for. ~~The last live version of this item is available in the November 2013 release of the NHS Data Model and Dictionary.~~

- monitoring the 48-hour access target
- assurance of validity and veracity of the achievement of the target
- support for local service modernisation, performance management and commissioning required to assure 48-hour access on an on-going basis

~~Collection and Submission of the [Genitourinary Medicine Access Monthly Monitoring Data Set](#) Access to this version can be obtained by emailing information.standards@hscic.gov.uk with "NHS Data Model and Dictionary - Archive Request" in the email subject line.~~

- The [Genitourinary Medicine Access Monthly Monitoring Data Set](#) is a monthly provider based return.
- Provider returns must be submitted by the 18th (or next working day) for the previous calendar month. Commissioner returns are due by the 25th or nearest next working day.
- The data is submitted via Unify2, the [Department of Health](#) online data collection system. NHS providers enter their data onto Unify2 using an upload.

Synopsis of the [Genitourinary Medicine Access Monthly Monitoring Data Set](#)

- [REPORTING PERIOD](#), [ORGANISATION CODE \(CODE OF PROVIDER\)](#), [ORGANISATION CODE \(CODE OF COMMISSIONER\)](#) and [SITE CODE \(OF TREATMENT\)](#)
- Attendances
- First [APPOINTMENTS](#) Missed
- First [APPOINTMENTS](#) offered within 2 days (excludes bank holidays & weekends)
- [PATIENTS](#) reporting symptoms
- [FIRST ATTENDANCES](#) seen after 2 days (excludes bank holidays & weekends)
- [PATIENT](#) perspective
- [PATIENTS](#) registered but not seen

GENITOURINARY MEDICINE ACCESS MONTHLY MONITORING DATA SET OVERVIEW (RETIRED)_ renamed from GENITOURINARY MEDICINE ACCESS MONTHLY MONITORING DATA SET OVERVIEW

Change to Supporting Information: Changed Description, Name, status to Retired

- Changed Description
- Changed Name from Data_Dictionary.Messages.Central_Return_Data_Sets.Overviews.Genitourinary_Medicine_Access_Monthly_Monitoring_Data_Set_Overview to Retired.Data_Dictionary.Messages.Central_Returns_Data_Sets.Genitourinary_Medicine_Access_Monthly_Monitoring_Data_Set_Overview
- Retired Genitourinary Medicine Access Monthly Monitoring Data Set Overview

SCHEDULED APPOINTMENT (RETIRED)_ renamed from SCHEDULED APPOINTMENT

Change to Supporting Information: Changed Description, Name, status to Retired

A [Scheduled Appointment](#) is an [APPOINTMENT](#). This item has been retired from the NHS Data Model and Dictionary.

A [Scheduled Appointment](#) identifies whether an [APPOINTMENT](#) has been prebooked. The last live version of this item is available in the November 2013 release of the NHS Data Model and Dictionary.

Access to this version can be obtained by emailing information.standards@hscic.gov.uk with "NHS Data Model and Dictionary - Archive Request" in the email subject line.

SCHEDULED APPOINTMENT (RETIRED)_ renamed from SCHEDULED APPOINTMENT

Change to Supporting Information: Changed Description, Name, status to Retired

- Changed Description
- Changed Name from Data_Dictionary.NHS_Business_Definitions.S.Scheduled_Appointment to Retired.Data_Dictionary.NHS_Business_Definitions.S.Scheduled_Appointment
- Retired Scheduled Appointment

UNSCHEDULED APPOINTMENT (RETIRED)_ renamed from UNSCHEDULED APPOINTMENT

Change to Supporting Information: Changed Description, Name, status to Retired

An [Unscheduled Appointment](#) is an [APPOINTMENT](#). This item has been retired from the NHS Data Model and Dictionary.

An [Unscheduled Appointment](#) identifies when a [PATIENT](#) attends a [CLINIC OR FACILITY](#) without prior notice or [Scheduled Appointment](#). The last live version of this item is available in the November 2013 release of the NHS Data Model and Dictionary.

Access to this version can be obtained by emailing information.standards@hscic.gov.uk with "NHS Data Model and Dictionary - Archive Request" in the email subject line.

UNSCHEDULED APPOINTMENT (RETIRED)_ renamed from UNSCHEDULED APPOINTMENT

Change to Supporting Information: Changed Description, Name, status to Retired

- Changed Description

- Changed Name from Data_Dictionary.NHS_Business_Definitions.U.Unscheduled_Appointment to Retired.Data_Dictionary.NHS_Business_Definitions.U.Unscheduled_Appointment
- Retired Unscheduled Appointment

APPOINTMENT

Change to Class: Changed Attributes

Attributes of this Class are:

K APPOINTMENT DATE
 K APPOINTMENT ENTRY NUMBER
 K APPOINTMENT TIME
~~APPOINTMENT BOOKING TYPE~~
 APPOINTMENT CANCELLED DATE
 APPOINTMENT CLASSIFICATION CODE
 APPOINTMENT FIRST ATTENDANCE
 APPOINTMENT GROUP IDENTIFIER
 APPOINTMENT PURPOSE FOR CHILD AND ADOLESCENT MENTAL HEALTH
 APPOINTMENT TYPE
 APPOINTMENT TYPE FOR IMPROVING ACCESS TO PSYCHOLOGICAL THERAPIES
 ATTENDED OR DID NOT ATTEND
 DID NOT ATTEND REASON
 FOLLOW UP CONTACT ATTEMPTED INDICATOR
 INVITATION OFFER SENT INDICATOR
 UNIQUE BOOKING REFERENCE NUMBER CONVERTED

APPOINTMENT OFFER

Change to Class: Changed Attributes

Attributes of this Class are:

K APPOINTMENT DATE OFFERED
 K APPOINTMENT TIME OFFERED
 APPOINTMENT ACCEPTED DATE
 APPOINTMENT CLASSIFICATION CODE
 APPOINTMENT OFFER ACCEPTED OR REFUSED
~~APPOINTMENT OFFER REFUSED REASON~~
 INVITATION OFFER DATE SENT
 INVITATION TYPE
~~PATIENT PREFERRED CLINIC INDICATOR~~
 REASONABLE OFFER INDICATOR
 REPLACEMENT APPOINTMENT BOOKED DATE FOR COMMUNITY CARE
 REPLACEMENT APPOINTMENT DATE OFFERED FOR COMMUNITY CARE
 REQUEST OR INVITATION

CARE CONTACT

Change to Class: Changed Attributes

Attributes of this Class are:

A and E ATTENDANCE CATEGORY
 A and E INITIAL ASSESSMENT TRIAGE CATEGORY
 A and E STREAM
 ACCIDENT AND EMERGENCY ARRIVAL MODE
 ACCIDENT AND EMERGENCY ATTENDANCE DISPOSAL
 ACUTE HOME-BASED TELEPHONE CONTACT
 ANTENATAL OR POSTNATAL INDICATOR
 ANTIRETROVIRAL THERAPY HOME DELIVERY INDICATOR
 ANTIRETROVIRAL THERAPY REGIMEN GROUP CODE
 BRIEF INTERVENTION PROVIDED INDICATOR
 BRIEF INTERVENTION TYPE FOR NHS HEALTH CHECK
 CARE ACTIVITY INFORMATION
 CARE CONTACT SERVICE TYPE FOR CHILDREN AND YOUNG PEOPLES HEALTH SERVICE SECONDARY USES
 CARE CONTACT SUBJECT
 CARE CONTACT TYPE
 CARE CONTACT TYPE FOR CHILDREN AND YOUNG PEOPLES HEALTH SERVICE SECONDARY USES
 CHILD DIFFICULT TO TEST REASON
 CLINICAL NURSE SPECIALIST INDICATION CODE
 CLINIC ATTENDANCE PURPOSE CODE FOR HIV
 COLPOSCOPY PRIME PROCEDURE TYPE
 CONSULTATION MEDIUM USED
 CONTRACEPTIVE ADVICE GIVEN

CONTRACEPTIVE SERVICE TYPE
CPA REVIEW OUTCOME
DECISION TO UNDERTAKE FURTHER ASSESSMENT INDICATOR
DENTAL HAEMORRHAGE SERVICE TYPE
DENTAL REFERRAL INDICATOR
DIETARY ADVICE REASON CODE
ELIGIBILITY OUTCOME
EMERGENCY TREATMENT FEE
EMERGENCY TREATMENT TYPE
EMPLOYMENT SUPPORT SUITABILITY INDICATOR
FIRST ANTIRETROVIRAL THERAPY IN THE UNITED KINGDOM INDICATOR
FIRST ATTENDANCE
FURTHER ASSESSMENT TYPE FOR NHS HEALTH CHECK
~~GENITOURINARY CONTACT TYPE CODE~~
HEALTH PROMOTION STAFF GROUP
INFORMATION AND ADVICE PROVIDED INDICATOR
INFORMATION AND ADVICE TYPE PROVIDED FOR NHS HEALTH CHECK
INITIAL CONTACT
INITIAL CONTACT WITHIN FIVE DAYS
INITIAL DIAGNOSIS CARE SETTING FOR HIV
IUD APPLICATION DATE
MATERNITY MEDICAL SERVICE TYPE
MATERNITY VISIT CALL REASON
MEDICAL STAFF TYPE SEEING PATIENT
METASTATIC STATUS
MULTIPROFESSIONAL OR MULTIDISCIPLINARY INDICATION CODE
NEW HIV DIAGNOSIS IN UNITED KINGDOM INDICATOR
OUTCOME OF ATTENDANCE
OUTCOME OF ATTENDANCE FOR CHILDREN AND YOUNG PEOPLES HEALTH SERVICE SECONDARY USES
PATIENT EXPOSURE TO HIV
PATIENT HIV CARE STATUS
PATIENT INFORMED OF OUTCOME DATE
~~PATIENT REPORTED SYMPTOMS INDICATOR~~
~~PATIENT REPORTED WAIT~~
PATIENT TRIAL STATUS FOR CANCER
PAYMENT FROM PATIENT RECEIVED
POST AND/OR PRE EXPOSURE PROPHYLAXIS CODE
POSTNATAL CARE INDICATOR
PREGNANCY INDICATOR FOR HIV
PSYCHIATRIC CARE INDICATOR FOR HIV
SETTLED ACCOMMODATION INDICATOR
SIGHT TEST DOMICILIARY VISIT TYPE
SIGHT TEST FORM COMPLETED
SIGHT TEST PERSON SUBSIDY TYPE
SIGNPOSTING TO SERVICE INDICATOR
SIGNPOSTING TO SERVICE TYPE FOR NHS HEALTH CHECK
SKIN TO SKIN CONTACT INDICATOR
SOCIAL WORKER CARE INDICATOR FOR HIV
STATUTORY ASSESSMENT TYPE
SUBJECTIVE GLOBAL ASSESSMENT
SURVEILLANCE RESULT
THERAPY TYPE FOR IMPROVING ACCESS TO PSYCHOLOGICAL THERAPIES
TWO YEAR NEONATAL OUTCOMES ASSESSMENT NOT CARRIED OUT REASON

ACTIVITY DATE TYPE

Change to Attribute: Changed Description

The type of [DATE](#) that defines the usage with regard to the [ACTIVITY](#).

An [ACTIVITY](#) may have many [DATES](#) associated with it but may only have one [DATE](#) of a particular type.

National Codes:

001	Angiogram Date (Retired July 2012)
002	Arrival Date At Accident and Emergency Department
003	Breast Assessment Date (Retired 1 January 2013)
004	Cancer Dental Assessment Date
005	Colorectal or Stoma Nurse Seen Date (Retired 1 January 2013)
006	Coronary Angiography Date (Retired July 2012)
007	Care Programme Approach Review Date

- 008 [Date Biopsy Taken](#)
- 009 [Discharge Date](#)
- 010 [Discharge Ready Date](#)
- 011 [End Date](#)
- 012 Event Date (Retired July 2012)
- 013 Expected Delivery Date (Retired September 2012)
- 014 [First Antenatal Assessment Date](#)
- 015 Full Postnatal Examination Date (Retired September 2012)
- 016 Initial Patient Contact Date (Retired July 2012)
- 017 Investigation Transfer Date (Retired July 2012)
- 018 Intrauterine Device Application Date (Retired September 2012)
- 019 Intrauterine Device Fitted Date (Retired September 2012)
- 020 [Last Dosage Date](#)
- 021 Mental Health Care Assessment Date (Retired September 2012)
- 022 Miscarriage Date (Retired September 2012)
- 023 [Pathology Result Due Date](#)
- 024 [Patient Informed Biopsy Result Date](#)
- 025 Patient Informed Of Outcome Date (Retired September 2012)
- 026 [Smoking Quit Date](#)
- 027 [Review Planned Date](#)
- 028 [Screening Result Date](#)
- 029 [Screening Result Sent Date](#)
- 030 [Specialist Palliative Care Date](#)
- 031 [Start Date](#)
- 032 [Cancer Symptoms First Noted Date](#)
- 033 [Attendance Date](#)
- 034 [Clinical Intervention Date](#)
- 035 [Immunisation Completion Date](#)
- 036 [Clinical Status Assessment Date](#)
- 037 Dose Given Date (Retired September 2012)
- 038 Test Date (Retired September 2012)
- 039 [Contact Date](#)
- 040 [Appointment Date](#)
- 041 [Primary Procedure Date](#)
- 042 [Second Operation Date](#)
- 043 [Speech and Language Assessment Date](#)
- 044 [Third Operation Date](#)
- 045 [Date First Seen](#)
- 046 [Statutory Assessment Date](#)
- 047 [Screening Test Date](#)
- 048 [Genitourinary Care Contact Date](#)
- 049 [Genitourinary Care Contact Date \(Retired January 2014\)](#)
- 049 [Consultant Upgrade Date](#)
- 101 [Referral Closure Date \(Community Care\)](#)
- 102 [Discharge Letter Issued Date \(Community Care\)](#)
- 103 [Systemic Anti-Cancer Therapy Administration Date](#)
- 104 [Procedure Date](#)
- 105 [Immunisation Dose Given Date](#)
- 106 [Antenatal Appointment Date](#)
- 107 [Antenatal Booking Appointment Date](#)
- 108 [Pregnancy First Contact Date](#)
- 109 [Screening Test Information Given Date](#)
- 110 [Assessment Date For Transplant Suitability](#)
- 111 [Accident and Emergency Initial Assessment Date](#)
- 112 [Accident and Emergency Date Seen For Treatment](#)
- 113 [Accident and Emergency Attendance Conclusion Date](#)
- 114 [Accident and Emergency Departure Date](#)
- 115 [Clinical Assessment Date](#)
- 116 [Imaging or Radiodiagnostic Event Date](#)
- 117 [Neonatal Critical Care Daily Care Date](#)
- 118 [Two Year Neonatal Outcomes Assessment Date](#)

Note: This list is not in alphabetical order.

APPOINTMENT BOOKING TYPE (RETIRED)_ renamed from APPOINTMENT BOOKING TYPE

Change to Attribute: Changed Description, Name, status to Retired

This is an indicator for whether an [APPOINTMENT](#) has been prebooked or the [PATIENT](#) attended a [CLINIC OR FACILITY](#) without prior notice or [Scheduled Appointment](#).

National Codes: **This item has been retired from the NHS Data Model and Dictionary.**

- 01 [Scheduled Appointment](#)
- 02 [Unscheduled Appointment](#)

The last live version of this item is available in the November 2013 release of the NHS Data Model and Dictionary.

Access to this version can be obtained by emailing information.standards@hscic.gov.uk with "NHS Data Model and Dictionary - Archive Request" in the email subject line.

APPOINTMENT BOOKING TYPE (RETIRED)_ renamed from APPOINTMENT BOOKING TYPE

Change to Attribute: Changed Description, Name, status to Retired

- Changed Description
- Changed Name from Data_Dictionary.Attributes.A.Ap.APPOINTMENT_BOOKING_TYPE to Retired.Data_Dictionary.Attributes.A.APPOINTMENT_BOOKING_TYPE
- Retired APPOINTMENT BOOKING TYPE

APPOINTMENT OFFER REFUSED REASON (RETIRED)_ renamed from APPOINTMENT OFFER REFUSED REASON

Change to Attribute: Changed Description, Name, status to Retired

The reason a [PATIENT](#) declined an [APPOINTMENT OFFER](#). This item has been retired from the NHS Data Model and Dictionary.

National Codes: The last live version of this item is available in the November 2013 release of the NHS Data Model and Dictionary.

- 01 [PATIENT](#) chose not to accept the [APPOINTMENT OFFER](#) for personal reasons
- 02 [PATIENT](#) identified clinical reasons for not accepting the [APPOINTMENT OFFER](#)
- 03 [PATIENT](#) preferred an [APPOINTMENT](#) at an alternative [CLINIC OR FACILITY](#)

Examples:

- 01 [PATIENT](#) considered the [APPOINTMENT OFFER](#) inconvenient, or preferred an [Unscheduled Appointment](#) or an accompanied appointment etc.
- 02 [PATIENT](#) may be taking drugs which may affect test, or needs to wait for incubation period or menstrual cycle to finish etc.
- 03 [PATIENT](#) may prefer to attend a specialist [CLINIC OR FACILITY](#) or another statutory or voluntary [ORGANISATION](#). Access to this version can be obtained by emailing information.standards@hscic.gov.uk with "NHS Data Model and Dictionary - Archive Request" in the email subject line.

APPOINTMENT OFFER REFUSED REASON (RETIRED)_ renamed from APPOINTMENT OFFER REFUSED REASON

Change to Attribute: Changed Description, Name, status to Retired

- Changed Description
- Changed Name from Data_Dictionary.Attributes.A.Ap.APPOINTMENT_OFFER_REFUSED_REASON to Retired.Data_Dictionary.Attributes.A.APPOINTMENT_OFFER_REFUSED_REASON
- Retired APPOINTMENT OFFER REFUSED REASON

CARE CONTACT SERVICE TYPE FOR CHILDREN AND YOUNG PEOPLE'S HEALTH SERVICE SECONDARY USES

Change to Attribute: Changed Description

The type of [SERVICE](#) providing the [CARE CONTACT](#) for the purposes of the [Children and Young People's Health Service Secondary Uses Data Set](#).

National Codes:

- 01 Aids and adaption fitting
- 02 Audiology
- 03 Community nursing
- 04 Continence advice
- 05 Continence aids
- 06 Contraceptive and Sexual Health
- 07 Diabetes
- 08 Domiciliary care
- 09 Early Support Programme
- 10 Family support
- 11 Genetic counselling
- 12 [Genitourinary Care Contact](#)
- 12 [Genitourinary Care Contact](#)
- 13 Health promotion
- 14 [Learning Disability](#)

- 15 Nutrition and dietetics
- 16 Occupational Therapy
- 17 Orthotics
- 18 Pain Clinic
- 19 Palliative care
- 20 Parental training/Support Programme (group)
- 21 Parental training/Support Programme (individual)
- 22 Physiotherapy
- 23 Play development
- 24 Portage
- 25 Respite/short term breaks
- 26 Speech Therapy
- 27 Sleep modification/support
- 28 Smoking/substance cessation/intervention programme
- 29 Wheelchair/aids
- 98 Other (not otherwise specified)

CARE CONTACT TYPE

Change to Attribute: Changed Description

The type of [CARE CONTACT](#).

National Codes:

- 01 [Accident and Emergency Attendance](#)
- 02 [Acute Home-Based Contact](#)
- 03 [Audiology Attendance](#)
- 04 [Cancer Clinical Status Assessment](#)
- 05 [Care Programme Approach Review](#)
- 06 [Clinic Attendance Consultant](#)
- 07 [Clinic Attendance Sexual and Reproductive Health Service](#)
- 08 [Clinic Attendance Midwife](#)
- 09 [Clinic Attendance Non-Consultant](#)
- 10 [Clinic Attendance Nurse](#)
- 11 [Contact Tracing Activity](#)
- 12 [Dental Treatment Contact](#)
- 13 [Day Care Attendance](#)
- 14 [Domiciliary Consultation](#)
- 15 [Emergency Dental Attendance](#)
- 16 [Face To Face Contact Community Care](#)
- 17 [Face To Face Contact CPA Care Coordinator](#)
- 18 [Face To Face Contact Dental](#)
- 19 [Face To Face Contact Optical](#)
- 20 Face To Face Contact Social Worker (Retired 01 April 2011)
- 21 [Face To Face Contact Surveillance](#)
- 22 [Sexual and Reproductive Health Domiciliary Visit](#)
- 23 [Genitourinary Consultant Clinic Attendance](#)
- 24 [GMP Consultation](#)
- 25 [GMP Practice Consultation](#)
- 26 [Home Assessment Visit](#)
- 27 [Maternity Domiciliary Visit](#)
- 28 [Night Consultation Visit](#)
- 29 [Nurse or Midwife Contact](#)
- 30 [Out-Patient Attendance Consultant](#)
- 31 [Registration Health Check](#)
- 32 Sheltered Work Attendance (Retired 01 April 2011)
- 33 [Sight Test](#)
- 34 [Social Services Statutory Assessment](#)
- 35 [Professional Advice And Support Contact](#)
- 36 [Professional Staff Group Contact](#)
- 37 Telephone Contact NHS Direct (Mental Health) (Retired 01 April 2011)
- 38 [Theatre Case](#)
- 39 [Ward Attendance](#)
- ~~40 [Genitourinary Care Contact](#)~~
- 40 [Genitourinary Care Contact \(Retired January 2014\)](#)
- 41 [Improving Access to Psychological Therapies Contact](#)
- 42 [NHS Health Check Assessment](#)
- 43 [Antenatal Booking Appointment](#)
- 44 [Pregnancy First Contact](#)
- 45 [Nutritional Assessment](#)

- 46 [HIV Clinic Attendance](#)
- 47 [Multi-Disciplinary Consultation \(Payment By Results\)](#)
- 48 [Multi-Professional Consultation \(Payment By Results\)](#)
- 49 [Two Year Neonatal Outcomes Assessment](#)

Note: The list is not in alphabetical order.

GENITOURINARY CONTACT TYPE CODE (RETIRED)_ renamed from GENITOURINARY CONTACT TYPE CODE

Change to Attribute: Changed Description, Name, status to Retired

A classification of a [Genitourinary Care Contact](#). **This item has been retired from the NHS Data Model and Dictionary.**

National Codes: **The last live version of this item is available in the November 2013 release of the NHS Data Model and Dictionary.**

- 01 Genitourinary medicine
- 02 Contraceptive/reproductive health
- 03 Psychosexual
- 04 Chronic problems
- 05 Sexual assault
- 06 Human immunodeficiency virus (HIV)

Access to this version can be obtained by emailing information.standards@hscic.gov.uk with "NHS Data Model and Dictionary - Archive Request" in the email subject line.

GENITOURINARY CONTACT TYPE CODE (RETIRED)_ renamed from GENITOURINARY CONTACT TYPE CODE

Change to Attribute: Changed Description, Name, status to Retired

- Changed Description
- Changed Name from `Data_Dictionary.Attributes.G.GENITOURINARY_CONTACT_TYPE_CODE` to `Retired.Data_Dictionary.Attributes.G.GENITOURINARY_CONTACT_TYPE_CODE`
- Retired GENITOURINARY CONTACT TYPE CODE

PATIENT PREFERRED CLINIC INDICATOR (RETIRED)_ renamed from PATIENT PREFERRED CLINIC INDICATOR

Change to Attribute: Changed Description, Name, status to Retired

This indicates whether the [CLINIC OR FACILITY](#) is the [PATIENT'S](#) preferred [CLINIC OR FACILITY](#).

National Codes: **This item has been retired from the NHS Data Model and Dictionary.**

- 1 [CLINIC OR FACILITY](#) was the [PATIENT'S](#) preferred choice
- 2 [CLINIC OR FACILITY](#) was not the [PATIENT'S](#) preferred choice

The last live version of this item is available in the November 2013 release of the NHS Data Model and Dictionary.

Access to this version can be obtained by emailing information.standards@hscic.gov.uk with "NHS Data Model and Dictionary - Archive Request" in the email subject line.

PATIENT PREFERRED CLINIC INDICATOR (RETIRED)_ renamed from PATIENT PREFERRED CLINIC INDICATOR

Change to Attribute: Changed Description, Name, status to Retired

- Changed Description
- Changed Name from `Data_Dictionary.Attributes.P.Pati.PATIENT_PREFERRED_CLINIC_INDICATOR` to `Retired.Data_Dictionary.Attributes.P.PATIENT_PREFERRED_CLINIC_INDICATOR`
- Retired PATIENT PREFERRED CLINIC INDICATOR

PATIENT REPORTED SYMPTOMS INDICATOR (RETIRED)_ renamed from PATIENT REPORTED SYMPTOMS INDICATOR

Change to Attribute: Changed Description, Name, status to Retired

This indicates whether the [PATIENT](#) reports the presence of symptoms.

National Codes: **This item has been retired from the NHS Data Model and Dictionary.**

- 1 [PATIENT](#) reports presence of symptoms (symptomatic)
- 2 [PATIENT](#) does not report the presence of symptoms (asymptomatic)

The last live version of this item is available in the November 2013 release of the NHS Data Model and Dictionary.

Access to this version can be obtained by emailing information.standards@hscic.gov.uk with "NHS Data Model and Dictionary - Archive Request" in the email subject line.

PATIENT REPORTED SYMPTOMS INDICATOR (RETIRED)_ renamed from PATIENT REPORTED SYMPTOMS INDICATOR

Change to Attribute: Changed Description, Name, status to Retired

- Changed Description
- Changed Name from Data_Dictionary.Attributes.P.Pati.PATIENT_REPORTED_SYMPTOMS_INDICATOR to Retired.Data_Dictionary.Attributes.P.PATIENT_REPORTED_SYMPTOMS_INDICATOR
- Retired PATIENT REPORTED SYMPTOMS INDICATOR

PATIENT REPORTED WAIT (RETIRED)_ renamed from PATIENT REPORTED WAIT

Change to Attribute: Changed Description, Name, status to Retired

This indicates the PATIENT'S perspective on how long they waited, reported by the PATIENT

~~National Codes:~~ This item has been retired from the NHS Data Model and Dictionary.

- 01 2 working days or less
- 02 Over 2 working days but less than a week
- 03 Over a week but less than 2 weeks
- 04 Over 2 weeks
- 99 Not known

The last live version of this item is available in the November 2013 release of the NHS Data Model and Dictionary.

Access to this version can be obtained by emailing information.standards@hscic.gov.uk with "NHS Data Model and Dictionary - Archive Request" in the email subject line.

PATIENT REPORTED WAIT (RETIRED)_ renamed from PATIENT REPORTED WAIT

Change to Attribute: Changed Description, Name, status to Retired

- Changed Description
- Changed Name from Data_Dictionary.Attributes.P.Pati.PATIENT_REPORTED_WAIT to Retired.Data_Dictionary.Attributes.P.PATIENT_REPORTED_WAIT
- Retired PATIENT REPORTED WAIT

CLINIC ATTENDANCES (HIV) TOTAL (RETIRED)_ renamed from CLINIC ATTENDANCES (HIV) TOTAL

Change to Data Element: Changed Description, Name, status to Retired

Format/Length:	no
HES Item:	
National Codes:	
Default Codes:	

Notes:

~~CLINIC ATTENDANCES (HIV) TOTAL~~ is the total number of first and follow-up attendances where the:

- a: ~~CARE CONTACT TYPE~~ is National Code 40 '~~Genitourinary Care Contact~~'
- and
- b: ~~FIRST ATTENDANCE~~ is either:
 - National Code 1 '~~First attendance face to face~~'
 - or
 - National Code 2 '~~Follow-up attendance face to face~~'
- and
- c: ~~ATTENDED OR DID NOT ATTEND~~ is either:
 - National Code 5 '~~Attended on time or, if late, before the relevant CARE PROFESSIONAL was ready to see the PATIENT~~'
 - '~~Attended on time~~'
 - or
 - National Code 6 '~~Arrived late, after the relevant CARE PROFESSIONAL was ready to see the PATIENT, but was seen~~'
- and
- d: ~~GENITOURINARY CONTACT TYPE CODE~~ is National Code 06 '~~Human immunodeficiency virus (HIV)~~'.
- and
- e: ~~Genitourinary Care Contact Date~~ is within the ~~REPORTING PERIOD~~.

This includes [Scheduled Appointments](#) and [Unscheduled Appointments](#). This item has been retired from the NHS Data Model and Dictionary. The last live version of this item is available in the November 2013 release of the NHS Data Model and Dictionary.

Access to this version can be obtained by emailing information.standards@hscic.gov.uk with "NHS Data Model and Dictionary - Archive Request" in the email subject line.

CLINIC ATTENDANCES (HIV) TOTAL (RETIRED)_ renamed from CLINIC ATTENDANCES (HIV) TOTAL

Change to Data Element: Changed Description, Name, status to Retired

- Changed Description
- Changed Name from Data_Dictionary.Data_Field_Notes.C.Cl.CLINIC_ATTENDANCES_(HIV)_TOTAL to Retired.Data_Dictionary.Data_Field_Notes.C.CLINIC_ATTENDANCES_(HIV)_TOTAL
- Retired CLINIC ATTENDANCES (HIV) TOTAL

CLINIC FIRST ATTENDANCES (HIV) TOTAL (RETIRED)_ renamed from CLINIC FIRST ATTENDANCES (HIV) TOTAL

Change to Data Element: Changed Description, Name, status to Retired

Format/Length:	n6
HES Item:	
National Codes:	
Default Codes:	

Notes:

[CLINIC FIRST ATTENDANCES \(HIV\) TOTAL](#) is the total number of first attendances where the:

- a. [CARE CONTACT TYPE](#) is National Code 40 '[Genitourinary Care Contact](#)'
- and
- b. [FIRST ATTENDANCE](#) is National Code 1 '[First attendance face to face](#)'
- and
- c. [ATTENDED OR DID NOT ATTEND](#) is either:
 - National Code 5 '[Attended on time or, if late, before the relevant CARE PROFESSIONAL was ready to see the PATIENT](#)'
 - '[Attended on time](#)'
 - or
 - National Code 6 '[Arrived late, after the relevant CARE PROFESSIONAL was ready to see the PATIENT, but was seen](#)'
- and
- d. [GENITOURINARY CONTACT TYPE CODE](#) is National Code 06 '[Human immunodeficiency virus \(HIV\)](#)'
- and
- e. [Genitourinary Care Contact Date](#) is within the [REPORTING PERIOD](#).

This includes [Scheduled Appointments](#) and [Unscheduled Appointments](#). This item has been retired from the NHS Data Model and Dictionary. The last live version of this item is available in the November 2013 release of the NHS Data Model and Dictionary.

Access to this version can be obtained by emailing information.standards@hscic.gov.uk with "NHS Data Model and Dictionary - Archive Request" in the email subject line.

CLINIC FIRST ATTENDANCES (HIV) TOTAL (RETIRED)_ renamed from CLINIC FIRST ATTENDANCES (HIV) TOTAL

Change to Data Element: Changed Description, Name, status to Retired

- Changed Description
- Changed Name from Data_Dictionary.Data_Field_Notes.C.Cl.CLINIC_FIRST_ATTENDANCES_(HIV)_TOTAL to Retired.Data_Dictionary.Data_Field_Notes.C.CLINIC_FIRST_ATTENDANCES_(HIV)_TOTAL
- Retired CLINIC FIRST ATTENDANCES (HIV) TOTAL

GENITOURINARY ALL ATTENDANCES TOTAL (RETIRED)_ renamed from GENITOURINARY ALL ATTENDANCES TOTAL

Change to Data Element: Changed Description, Name, status to Retired

Format/length:	n6
HES item:	
National Codes:	
Default Codes:	

Notes: This item has been retired from the NHS Data Model and Dictionary.

The total number of first and follow-up attendances where the:

- a. the CARE CONTACT TYPE is National Code 40 - 'Genitourinary Care Contact'
- and
- b. FIRST ATTENDANCE is either National Code 1 - 'First attendance face to face' or National Code 2 - 'Follow-up attendance face to face'
- and
- c. ATTENDED OR DID NOT ATTEND is either National Code 5 - 'Attended on time or, if late, before the relevant CARE PROFESSIONAL was ready to see the PATIENT' or National Code 6 - 'Arrived late, after the relevant CARE PROFESSIONAL was ready to see the PATIENT, but was seen'
- and
- d. the Genitourinary Care Contact Date is within the REPORTING PERIOD.
- and
- e. the GENITOURINARY CONTACT TYPE CODE excludes National Code 06 - 'Human immunodeficiency virus (HIV)'

This includes Scheduled Appointments and Unscheduled Appointments. The last live version of this item is available in the November 2012/23 release of the NHS Data Model and Dictionary.

Access to this version can be obtained by emailing information.standards@hscic.gov.uk with "NHS Data Model and Dictionary - Archive Request" in the email subject line.

GENITOURINARY ALL ATTENDANCES TOTAL (RETIRED)_ renamed from GENITOURINARY ALL ATTENDANCES TOTAL

Change to Data Element: Changed Description, Name, status to Retired

- Changed Description
- Changed Name from Data_Dictionary.Data_Field_Notes.G.GENITOURINARY_ALL_ATTENDANCES_TOTAL to Retired.Data_Dictionary.Data_Field_Notes.G.GENITOURINARY_ALL_ATTENDANCES_TOTAL
- Retired GENITOURINARY ALL ATTENDANCES TOTAL

GENITOURINARY FIRST APPOINTMENTS MISSED TOTAL (RETIRED)_ renamed from GENITOURINARY FIRST APPOINTMENTS MISSED TOTAL

Change to Data Element: Changed Description, Name, status to Retired

Format/Length:	nr
HES Item:	
National Codes:	
Default Codes:	

Notes:

The total number of first APPOINTMENTS missed where: **This item has been retired from the NHS Data Model and Dictionary.**

- a. the CARE CONTACT TYPE is National Code 40 - 'Genitourinary Care Contact'
- and
- b. the FIRST ATTENDANCE is National Code 1 - 'First attendance face to face'
- and
- c. ATTENDED OR DID NOT ATTEND is either National Code 7 - 'PATIENT arrived late and could not be seen' or National Code 3 - 'Did not attend - no advance warning given'
- and
- d. APPOINTMENT BOOKING TYPE is National Code 01 - 'Scheduled Appointment'
- and
- e. the APPOINTMENT DATE is within the REPORTING PERIOD.
- and
- f. the GENITOURINARY CONTACT TYPE CODE excludes National Code 06 - 'Human immunodeficiency virus (HIV)'

An APPOINTMENT where the PATIENT did not attend and the APPOINTMENT SLOT is subsequently offered to another PATIENT should be included as a missed APPOINTMENT. The last live version of this item is available in the November 2013 release of the NHS Data Model and Dictionary.

Access to this version can be obtained by emailing information.standards@hscic.gov.uk with "NHS Data Model and Dictionary - Archive Request" in the email subject line.

GENITOURINARY FIRST APPOINTMENTS MISSED TOTAL (RETIRED)_ renamed from GENITOURINARY FIRST APPOINTMENTS MISSED TOTAL

Change to Data Element: Changed Description, Name, status to Retired

- Changed Description
- Changed Name from Data_Dictionary.Data_Field_Notes.G.GENITOURINARY_FIRST_APPOINTMENTS_MISSED_TOTAL to

- Retired GENITOURINARY FIRST APPOINTMENTS MISSED TOTAL

GENITOURINARY FIRST APPOINTMENTS MISSED WITHIN 2 DAYS TOTAL (RETIRED)___ renamed from GENITOURINARY FIRST APPOINTMENTS MISSED WITHIN 2 DAYS TOTAL

Change to Data Element: Changed Description, Name, status to Retired

Format/Length:	n6
HES Item:	
National Codes:	
Default Codes:	

Notes:

The total number of first [Scheduled Appointments](#) missed where the number of days from the [REFERRAL REQUEST RECEIVED DATE](#) to the [APPOINTMENT DATE](#) is 2 days or less (excludes bank holidays and weekends). **This item has been retired from the NHS Data Model and Dictionary.**

- a. the [CARE CONTACT TYPE](#) is National Code 40 - *'Genitourinary Care Contact'*
- and
- b. [FIRST ATTENDANCE](#) is National Code 1 - *'First attendance face to face'*
- and
- c. [ATTENDED OR DID NOT ATTEND](#) is either National Code 7 - *'PATIENT arrived late and could not be seen'* or National Code 3 - *'Did not attend - no advance warning given'*
- and
- d. [APPOINTMENT BOOKING TYPE](#) is National Code 01 - *'Scheduled'*
- and
- e. the [APPOINTMENT DATE](#) is within the [REPORTING PERIOD](#).
- and
- f. the [GENITOURINARY CONTACT TYPE CODE](#) excludes National Code 06 - *'Human immunodeficiency virus (HIV)'*

An [APPOINTMENT](#) where the [PATIENT](#) did not attend and the [APPOINTMENT SLOT](#) is subsequently offered to another [PATIENT](#) should be included as a missed [APPOINTMENT](#). The last live version of this item is available in the November 2013 release of the NHS Data Model and Dictionary.

Access to this version can be obtained by emailing information.standards@hscic.gov.uk with "NHS Data Model and Dictionary - Archive Request" in the email subject line.

GENITOURINARY FIRST APPOINTMENTS MISSED WITHIN 2 DAYS TOTAL (RETIRED)___ renamed from GENITOURINARY FIRST APPOINTMENTS MISSED WITHIN 2 DAYS TOTAL

Change to Data Element: Changed Description, Name, status to Retired

- Changed Description
- Changed Name from Data_Dictionary.Data_Field_Notes.G.GENITOURINARY_FIRST_APPOINTMENTS_MISSED_WITHIN_2_DAYS_TOTAL to Retired.Data_Dictionary.Data_Field_Notes.G.GENITOURINARY_FIRST_APPOINTMENTS_MISSED_WITHIN_2_DAYS_TOTAL
- Retired GENITOURINARY FIRST APPOINTMENTS MISSED WITHIN 2 DAYS TOTAL

GENITOURINARY FIRST APPOINTMENTS OFFERED WITHIN 2 DAYS TOTAL (RETIRED)___ renamed from GENITOURINARY FIRST APPOINTMENTS OFFERED WITHIN 2 DAYS TOTAL

Change to Data Element: Changed Description, Name, status to Retired

Format/length:	n6
HES item:	
National Codes:	
Default Codes:	

Notes: This item has been retired from the NHS Data Model and Dictionary.

The total number of first attendances where the number of days from the [REFERRAL REQUEST RECEIVED DATE](#) to the [EARLIEST REASONABLE OFFER DATE](#) is 2 days or less (excluding bank holidays and weekends) and: .

- a. the [CARE CONTACT TYPE](#) is National Code 40 - *'Genitourinary Care Contact'*
- and
- b. [FIRST ATTENDANCE](#) is National Code 1 - *'First attendance face to face'*
- and
- c. [ATTENDED OR DID NOT ATTEND](#) is either National Code 5 - *'Attended on time or, if late, before the relevant CARE PROFESSIONAL was ready to see the PATIENT'* or National Code 6 - *'Arrived late, after the relevant CARE PROFESSIONAL was ready to see the PATIENT, but was seen.'*
- and
- d. the [Genitourinary Care Contact Date](#) is within the [REPORTING PERIOD](#)

and

- e: the [GENITOURINARY CONTACT TYPE CODE](#) excludes National Code 06 - '*Human immunodeficiency virus (HIV)*'

This includes [Scheduled Appointments](#) and [Unscheduled Appointments](#). The last live version of this item is available in the November 2013 release of the NHS Data Model and Dictionary.

Access to this version can be obtained by emailing information.standards@hscic.gov.uk with "NHS Data Model and Dictionary - Archive Request" in the email subject line.

GENITOURINARY FIRST APPOINTMENTS OFFERED WITHIN 2 DAYS TOTAL (RETIRED)_ renamed from GENITOURINARY FIRST APPOINTMENTS OFFERED WITHIN 2 DAYS TOTAL

Change to Data Element: Changed Description, Name, status to Retired

- Changed Description
- Changed Name from Data_Dictionary.Data_Field_Notes.G.GENITOURINARY_FIRST_APPOINTMENTS_OFFERED_WITHIN_2_DAYS_TOTAL to Retired.Data_Dictionary.Data_Field_Notes.G.GENITOURINARY_FIRST_APPOINTMENTS_OFFERED_WITHIN_2_DAYS_TOTAL
- Retired GENITOURINARY FIRST APPOINTMENTS OFFERED WITHIN 2 DAYS TOTAL

GENITOURINARY FIRST APPOINTMENTS SEEN AFTER 2 DAYS - CLINICAL REASON TOTAL (RETIRED)_ renamed from GENITOURINARY FIRST APPOINTMENTS SEEN AFTER 2 DAYS - CLINICAL REASON TOTAL

Change to Data Element: Changed Description, Name, status to Retired

Format/length:	n6
HES item:	
National Codes:	
Default Codes:	

Notes: This item has been retired from the NHS Data Model and Dictionary.

The total number of first attendances where the number of days from the [REFERRAL REQUEST RECEIVED DATE](#) to the [APPOINTMENT DATE](#) is more than 2 days (excluding bank holidays and weekends) and where the [PATIENT](#) declined the [EARLIEST REASONABLE OFFER DATE](#) for clinical reasons:

- a: the [CARE CONTACT TYPE](#) is National Code 40 - '*Genitourinary Care Contact*'
- and
- b: [FIRST ATTENDANCE](#) is National Code 1 - '*First attendance face to face*'
- and
- c: [APPOINTMENT OFFER REFUSED REASON](#) is National Code 02 - '*PATIENT identified clinical reasons for not accepting the APPOINTMENT OFFER*'
- and
- d: the [Genitourinary Care Contact Date](#) is within the [REPORTING PERIOD](#).
- and
- e: the [GENITOURINARY CONTACT TYPE CODE](#) excludes National Code 06 - '*Human immunodeficiency virus (HIV)*'

This includes [Scheduled Appointments](#) and [Unscheduled Appointments](#). The last live version of this item is available in the November 2013 release of the NHS Data Model and Dictionary.

Access to this version can be obtained by emailing information.standards@hscic.gov.uk with "NHS Data Model and Dictionary - Archive Request" in the email subject line.

GENITOURINARY FIRST APPOINTMENTS SEEN AFTER 2 DAYS - CLINICAL REASON TOTAL (RETIRED)_ renamed from GENITOURINARY FIRST APPOINTMENTS SEEN AFTER 2 DAYS - CLINICAL REASON TOTAL

Change to Data Element: Changed Description, Name, status to Retired

- Changed Description
- Changed Name from Data_Dictionary.Data_Field_Notes.G.GENITOURINARY_FIRST_APPOINTMENTS_SEEN_AFTER_2_DAYS_-_CLINICAL_REASON_TOTAL to Retired.Data_Dictionary.Data_Field_Notes.G.GENITOURINARY_FIRST_APPOINTMENTS_SEEN_AFTER_2_DAYS_-_CLINICAL_REASON_TOTAL
- Retired GENITOURINARY FIRST APPOINTMENTS SEEN AFTER 2 DAYS - CLINICAL REASON TOTAL

GENITOURINARY FIRST APPOINTMENTS SEEN AFTER 2 DAYS - PATIENT CHOICE TOTAL (RETIRED)_ renamed from GENITOURINARY FIRST APPOINTMENTS SEEN AFTER 2 DAYS - PATIENT CHOICE TOTAL

Change to Data Element: Changed Description, Name, status to Retired

Format/length:	n6
HES item:	

National Codes:
Default Codes:

Notes: This item has been retired from the NHS Data Model and Dictionary.

The total number of first attendances where the number of days from the [REFERRAL REQUEST RECEIVED DATE](#) to the [APPOINTMENT DATE](#) is more than 2 days (excluding bank holidays and weekends) and where the [PATIENT](#) declined the [EARLIEST REASONABLE OFFER DATE](#) for personal reasons:

- a. the [CARE CONTACT TYPE](#) is National Code 40 - '[Genitourinary Care Contact](#)'
- and
- b. [FIRST ATTENDANCE](#) is National Code 1 - '[First attendance face to face](#)'
- and
- c. [APPOINTMENT OFFER REFUSED REASON](#) is National Code 01 - '[PATIENT chose not to accept the APPOINTMENT OFFER for personal reasons](#)'
- and
- d. the [Genitourinary Care Contact Date](#) is within the [REPORTING PERIOD](#).
- and
- e. the [GENITOURINARY CONTACT TYPE CODE](#) excludes National Code 06 - '[Human immunodeficiency virus \(HIV\)](#)'

This includes [Scheduled Appointments](#) and [Unscheduled Appointments](#). The last live version of this item is available in the November 2013 release of the NHS Data Model and Dictionary.

Access to this version can be obtained by emailing information.standards@hscic.gov.uk with "NHS Data Model and Dictionary - Archive Request" in the email subject line.

GENITOURINARY FIRST APPOINTMENTS SEEN AFTER 2 DAYS - PATIENT CHOICE TOTAL (RETIRED)_ renamed from GENITOURINARY FIRST APPOINTMENTS SEEN AFTER 2 DAYS - PATIENT CHOICE TOTAL

Change to Data Element: Changed Description, Name, status to Retired

- Changed Description
- Changed Name from Data_Dictionary.Data_Field_Notes.G.GENITOURINARY_FIRST_APPOINTMENTS_SEEN_AFTER_2_DAYS_-_PATIENT_CHOICE_TOTAL to Retired.Data_Dictionary.Data_Field_Notes.G.GENITOURINARY_FIRST_APPOINTMENTS_SEEN_AFTER_2_DAYS_-_PATIENT_CHOICE_TOTAL
- Retired GENITOURINARY FIRST APPOINTMENTS SEEN AFTER 2 DAYS - PATIENT CHOICE TOTAL

GENITOURINARY FIRST APPOINTMENTS SEEN AFTER 2 DAYS - SPECIALIST CLINIC TOTAL (RETIRED)_ renamed from GENITOURINARY FIRST APPOINTMENTS SEEN AFTER 2 DAYS - SPECIALIST CLINIC TOTAL

Change to Data Element: Changed Description, Name, status to Retired

Format/length: n6
HES item:
National Codes:
Default Codes:

Notes: This item has been retired from the NHS Data Model and Dictionary.

The total number of first attendances where the number of days from the [REFERRAL REQUEST RECEIVED DATE](#) to the [APPOINTMENT DATE](#) is more than 2 days (excluding bank holidays and weekends) and where the [PATIENT](#) declined the [EARLIEST REASONABLE OFFER DATE](#) because they preferred an alternative [CLINIC OR FACILITY](#):

- a. the [CARE CONTACT TYPE](#) is National Code 40 - '[Genitourinary Care Contact](#)'
- and
- b. [FIRST ATTENDANCE](#) is National Code 1 - '[First attendance face to face](#)'
- and
- c. [APPOINTMENT OFFER REFUSED REASON](#) is National Code 03 - '[PATIENT preferred an APPOINTMENT at an alternative CLINIC OR FACILITY](#)'
- and
- d. the [Genitourinary Care Contact Date](#) is within the [REPORTING PERIOD](#).
- and
- e. the [GENITOURINARY CONTACT TYPE CODE](#) excludes National Code 06 - '[Human immunodeficiency virus \(HIV\)](#)'

This includes [Scheduled Appointments](#) and [Unscheduled Appointments](#). The last live version of this item is available in the November 2013 release of the NHS Data Model and Dictionary.

Access to this version can be obtained by emailing information.standards@hscic.gov.uk with "NHS Data Model and Dictionary - Archive Request" in the email subject line.

GENITOURINARY FIRST APPOINTMENTS SEEN AFTER 2 DAYS - SPECIALIST CLINIC TOTAL (RETIRED)_ renamed from GENITOURINARY FIRST APPOINTMENTS SEEN AFTER 2 DAYS - SPECIALIST CLINIC TOTAL

Change to Data Element: Changed Description, Name, status to Retired

- Changed Description
- Changed Name from Data_Dictionary.Data_Field_Notes.G.GENITOURINARY_FIRST_APPOINTMENTS_SEEN_AFTER_2_DAYS_-_SPECIALIST_CLINIC_TOTAL to Retired.Data_Dictionary.Data_Field_Notes.G.GENITOURINARY_FIRST_APPOINTMENTS_SEEN_AFTER_2_DAYS_-_SPECIALIST_CLINIC_TOTAL
- Retired GENITOURINARY FIRST APPOINTMENTS SEEN AFTER 2 DAYS - SPECIALIST CLINIC TOTAL

GENITOURINARY FIRST ATTENDANCES - PATIENT PREFERRED CLINIC TOTAL (RETIRED) renamed from GENITOURINARY FIRST ATTENDANCES - PATIENT PREFERRED CLINIC TOTAL

Change to Data Element: Changed Description, Name, status to Retired

Format/length:	n6
HES item:	
National Codes:	
Default Codes:	

Notes: This item has been retired from the NHS Data Model and Dictionary.

The total number of first attendances where the [PATIENT](#) reports the clinic as their preferred service where the-

- a. the [CARE CONTACT TYPE](#) is National Code 40 - '[Genitourinary Care Contact](#)'
- and
- b. [FIRST ATTENDANCE](#) is National Code 1 - '[First attendance face to face](#)'
- and
- c. [ATTENDED OR DID NOT ATTEND](#) is either National Code 5 - '[Attended on time or, if late, before the relevant CARE PROFESSIONAL was ready to see the PATIENT](#)' or National Code 6 - '[Arrived late, after the relevant CARE PROFESSIONAL was ready to see the PATIENT, but was seen](#)'
- and
- d. [PATIENT PREFERRED CLINIC INDICATOR](#) is National Code 1 - '[CLINIC OR FACILITY was the PATIENT'S preferred choice](#)'
- and
- e. the [Genitourinary Care Contact Date](#) is within the [REPORTING PERIOD](#).
- and
- f. the [GENITOURINARY CONTACT TYPE CODE](#) excludes National Code 06 - '[Human immunodeficiency virus \(HIV\)](#)'

This includes [Scheduled Appointments](#) and [Unscheduled Appointments](#). The last live version of this item is available in the November 2013 release of the NHS Data Model and Dictionary.

Access to this version can be obtained by emailing information.standards@hscic.gov.uk with "NHS Data Model and Dictionary - Archive Request" in the email subject line.

GENITOURINARY FIRST ATTENDANCES - PATIENT PREFERRED CLINIC TOTAL (RETIRED) renamed from GENITOURINARY FIRST ATTENDANCES - PATIENT PREFERRED CLINIC TOTAL

Change to Data Element: Changed Description, Name, status to Retired

- Changed Description
- Changed Name from Data_Dictionary.Data_Field_Notes.G.GENITOURINARY_FIRST_ATTENDANCES_-_PATIENT_PREFERRED_CLINIC_TOTAL to Retired.Data_Dictionary.Data_Field_Notes.G.GENITOURINARY_FIRST_ATTENDANCES_-_PATIENT_PREFERRED_CLINIC_TOTAL
- Retired GENITOURINARY FIRST ATTENDANCES - PATIENT PREFERRED CLINIC TOTAL

GENITOURINARY FIRST ATTENDANCES SEEN AFTER 10 DAYS TOTAL (RETIRED) renamed from GENITOURINARY FIRST ATTENDANCES SEEN AFTER 10 DAYS TOTAL

Change to Data Element: Changed Description, Name, status to Retired

Format/length:	n6
HES item:	
National Codes:	
Default Codes:	

Notes: This item has been retired from the NHS Data Model and Dictionary.

The total number of first attendances where the number of days from the [REFERRAL REQUEST RECEIVED DATE](#) to the [Genitourinary Care Contact Date](#) is more than 10 days (excluding bank holidays and weekends) and:-

- a. the [CARE CONTACT TYPE](#) is National Code 40 - '[Genitourinary Care Contact](#)'
- and
- b. [FIRST ATTENDANCE](#) is National Code 1 - '[First attendance face to face](#)'
- and
- c. [ATTENDED OR DID NOT ATTEND](#) is either National Code 5 - '[Attended on time or, if late, before the relevant CARE](#)

PROFESSIONAL was ready to see the PATIENT' or National Code 6 - 'Arrived late, after the relevant CARE PROFESSIONAL was ready to see the PATIENT, but was seen'

and

d: the [Genitourinary Care Contact Date](#) is within the [REPORTING PERIOD](#).

and

e: the [GENITOURINARY CONTACT TYPE CODE](#) excludes National Code 06 - 'Human immunodeficiency virus (HIV)'

This includes [Scheduled Appointments](#) and [Unscheduled Appointments](#). The last live version of this item is available in the November 2013 release of the NHS Data Model and Dictionary.

Access to this version can be obtained by emailing information.standards@hscic.gov.uk with "NHS Data Model and Dictionary - Archive Request" in the email subject line.

GENITOURINARY FIRST ATTENDANCES SEEN AFTER 10 DAYS TOTAL (RETIRED)___ renamed from GENITOURINARY FIRST ATTENDANCES SEEN AFTER 10 DAYS TOTAL

Change to Data Element: Changed Description, Name, status to Retired

- Changed Description
- Changed Name from Data_Dictionary.Data_Field_Notes.G.GENITOURINARY_FIRST_ATTENDANCES_SEEN_AFTER_10_DAYS_TOTAL to Retired.Data_Dictionary.Data_Field_Notes.G.GENITOURINARY_FIRST_ATTENDANCES_SEEN_AFTER_10_DAYS_TOTAL
- Retired GENITOURINARY FIRST ATTENDANCES SEEN AFTER 10 DAYS TOTAL

GENITOURINARY FIRST ATTENDANCES SEEN WITHIN 2 DAYS TOTAL (RETIRED)___ renamed from GENITOURINARY FIRST ATTENDANCES SEEN WITHIN 2 DAYS TOTAL

Change to Data Element: Changed Description, Name, status to Retired

Format/length:	no
HES item:	
National Codes:	
Default Codes:	

Notes: This item has been retired from the NHS Data Model and Dictionary.

The total number of first attendances where the number of days from the [REFERRAL REQUEST RECEIVED DATE](#) to the [Genitourinary Care Contact Date](#) is 2 days or less (excluding bank holidays and weekends) and:

a: the [CARE CONTACT TYPE](#) is National Code 40 - 'Genitourinary Care Contact'

and

b: [FIRST ATTENDANCE](#) is National Code 1 - 'First attendance face to face'

and

c: [ATTENDED OR DID NOT ATTEND](#) is either National Code 5 - 'Attended on time or, if late, before the relevant CARE PROFESSIONAL was ready to see the PATIENT' or National Code 6 - 'Arrived late, after the relevant CARE PROFESSIONAL was ready to see the PATIENT, but was seen'

and

d: the [Genitourinary Care Contact Date](#) is within the [REPORTING PERIOD](#).

and

e: the [GENITOURINARY CONTACT TYPE CODE](#) excludes National Code 06 - 'Human immunodeficiency virus (HIV)'

This includes [Scheduled Appointments](#) and [Unscheduled Appointments](#). The last live version of this item is available in the November 2013 release of the NHS Data Model and Dictionary.

Access to this version can be obtained by emailing information.standards@hscic.gov.uk with "NHS Data Model and Dictionary - Archive Request" in the email subject line.

GENITOURINARY FIRST ATTENDANCES SEEN WITHIN 2 DAYS TOTAL (RETIRED)___ renamed from GENITOURINARY FIRST ATTENDANCES SEEN WITHIN 2 DAYS TOTAL

Change to Data Element: Changed Description, Name, status to Retired

- Changed Description
- Changed Name from Data_Dictionary.Data_Field_Notes.G.GENITOURINARY_FIRST_ATTENDANCES_SEEN_WITHIN_2_DAYS_TOTAL to Retired.Data_Dictionary.Data_Field_Notes.G.GENITOURINARY_FIRST_ATTENDANCES_SEEN_WITHIN_2_DAYS_TOTAL
- Retired GENITOURINARY FIRST ATTENDANCES SEEN WITHIN 2 DAYS TOTAL

GENITOURINARY FIRST ATTENDANCES TOTAL (RETIRED)___ renamed from GENITOURINARY FIRST ATTENDANCES TOTAL

Change to Data Element: Changed Description, Name, status to Retired

Format/length:	n6
HES item:	
National Codes:	
Default Codes:	

Notes: This item has been retired from the NHS Data Model and Dictionary.

The total number of first attendances where the:

- a. the [CARE CONTACT TYPE](#) is National Code 40 - '[Genitourinary Care Contact](#)'
- and
- b. [FIRST ATTENDANCE](#) is National Code 1 - '[First attendance face to face](#)'
- and
- c. [ATTENDED OR DID NOT ATTEND](#) is either National Code 5 - '[Attended on time or, if late, before the relevant CARE PROFESSIONAL was ready to see the PATIENT](#)' or National Code 6 - '[Arrived late, after the relevant CARE PROFESSIONAL was ready to see the PATIENT, but was seen.](#)'
- and
- d. the [Genitourinary Care Contact Date](#) is within the [REPORTING PERIOD](#).
- and
- e. the [GENITOURINARY CONTACT TYPE CODE](#) excludes National Code 06 - '[Human immunodeficiency virus \(HIV\)](#)'

This includes [Scheduled Appointments](#) and [Unscheduled Appointments](#). The last live version of this item is available in the November 2013 release of the NHS Data Model and Dictionary.

Access to this version can be obtained by emailing information.standards@hscic.gov.uk with "NHS Data Model and Dictionary - Archive Request" in the email subject line.

GENITOURINARY FIRST ATTENDANCES TOTAL (RETIRED)_ renamed from GENITOURINARY FIRST ATTENDANCES TOTAL

Change to Data Element: Changed Description, Name, status to Retired

- Changed Description
- Changed Name from Data_Dictionary.Data_Field_Notes.G.GENITOURINARY_FIRST_ATTENDANCES_TOTAL to Retired.Data_Dictionary.Data_Field_Notes.G.GENITOURINARY_FIRST_ATTENDANCES_TOTAL
- Retired GENITOURINARY FIRST ATTENDANCES TOTAL

GENITOURINARY FIRST ATTENDANCES - UNSCHEDULED TOTAL (RETIRED)_ renamed from GENITOURINARY FIRST ATTENDANCES - UNSCHEDULED TOTAL

Change to Data Element: Changed Description, Name, status to Retired

Format/length:	n6
HES item:	
National Codes:	
Default Codes:	

Notes: This item has been retired from the NHS Data Model and Dictionary.

The total number of unscheduled first attendances where the:

- a. the [CARE CONTACT TYPE](#) is National Code 40 - '[Genitourinary Care Contact](#)'
- and
- b. [FIRST ATTENDANCE](#) is National Code 1 - '[First attendance face to face](#)'
- and
- c. [ATTENDED OR DID NOT ATTEND](#) is National Code 5 - '[Attended on time or, if late, before the relevant CARE PROFESSIONAL was ready to see the PATIENT](#)'
- and
- d. [APPOINTMENT BOOKING TYPE](#) is National Code 02 - '[Unscheduled Appointment](#)'
- and
- e. the [Genitourinary Care Contact Date](#) is within the [REPORTING PERIOD](#).
- and
- e. the [GENITOURINARY CONTACT TYPE CODE](#) excludes National Code 06 - '[Human immunodeficiency virus \(HIV\)](#)'

The last live version of this item is available in the November 2013 release of the NHS Data Model and Dictionary.

Access to this version can be obtained by emailing information.standards@hscic.gov.uk with "NHS Data Model and Dictionary - Archive Request" in the email subject line.

GENITOURINARY FIRST ATTENDANCES - UNSCHEDULED TOTAL (RETIRED)_ renamed from GENITOURINARY FIRST ATTENDANCES - UNSCHEDULED TOTAL

Change to Data Element: Changed Description, Name, status to Retired

- Changed Description
- Changed Name from Data_Dictionary.Data_Field_Notes.G.GENITOURINARY_FIRST_ATTENDANCES_-_UNSCHEДУLED_TOTAL to Retired.Data_Dictionary.Data_Field_Notes.G.GENITOURINARY_FIRST_ATTENDANCES_-_UNSCHEДУLED_TOTAL
- Retired GENITOURINARY FIRST ATTENDANCES - UNSCHEDULED TOTAL

PATIENT PERSPECTIVE ON WAITING TIMES - SCHEDULED ATTENDANCES WITHIN 2 DAYS TOTAL (RETIRED)
renamed from PATIENT PERSPECTIVE ON WAITING TIMES - SCHEDULED ATTENDANCES WITHIN 2 DAYS TOTAL

Change to Data Element: Changed Description, Name, status to Retired

Format/length:	n6
HES item:	
National Codes:	
Default Codes:	

Notes: This item has been retired from the NHS Data Model and Dictionary.

The total number of scheduled first attendances where the PATIENT reported a waiting time within 2 normal working days (excluding bank holidays and weekends):

- a: the CARE CONTACT TYPE is National Code 40 - 'Genitourinary Care Contact'
- and
- b: FIRST ATTENDANCE is National Code 1 - 'First attendance face to face'
- and
- c: ATTENDED OR DID NOT ATTEND is either National Code 5 - 'Attended on time or, if late, before the relevant CARE PROFESSIONAL was ready to see the PATIENT' or National Code 6 - 'Arrived late, after the relevant CARE PROFESSIONAL was ready to see the PATIENT, but was seen'
- and
- d: APPOINTMENT BOOKING TYPE is National Code 01 - 'Scheduled Appointment'
- and
- e: PATIENT REPORTED WAIT is National Code 01 - '2 working days or less'
- and
- f: the Genitourinary Care Contact Date is within the REPORTING PERIOD.
- and
- g: the GENITOURINARY CONTACT TYPE CODE excludes National Code 06 - 'Human immunodeficiency virus (HIV)'

The last live version of this item is available in the November 2013 release of the NHS Data Model and Dictionary.

Access to this version can be obtained by emailing information.standards@hscic.gov.uk with "NHS Data Model and Dictionary - Archive Request" in the email subject line.

PATIENT PERSPECTIVE ON WAITING TIMES - SCHEDULED ATTENDANCES WITHIN 2 DAYS TOTAL (RETIRED)
renamed from PATIENT PERSPECTIVE ON WAITING TIMES - SCHEDULED ATTENDANCES WITHIN 2 DAYS TOTAL

Change to Data Element: Changed Description, Name, status to Retired

- Changed Description
- Changed Name from Data_Dictionary.Data_Field_Notes.P.Pat.PATIENT_PERSPECTIVE_ON_WAITING_TIMES_-_SCHEDULED_ATTENDANCES_WITHIN_2_DAYS_TOTAL to Retired.Data_Dictionary.Data_Field_Notes.P.PATIENT_PERSPECTIVE_ON_WAITING_TIMES_-_SCHEDULED_ATTENDANCES_WITHIN_2_DAYS_TOTAL
- Retired PATIENT PERSPECTIVE ON WAITING TIMES - SCHEDULED ATTENDANCES WITHIN 2 DAYS TOTAL

PATIENT PERSPECTIVE ON WAITING TIMES - UNSCHEDULED ATTENDANCES WITHIN 2 DAYS TOTAL (RETIRED)
renamed from PATIENT PERSPECTIVE ON WAITING TIMES - UNSCHEDULED ATTENDANCES WITHIN 2 DAYS TOTAL

Change to Data Element: Changed Description, Name, status to Retired

Format/length:	n6
HES item:	
National Codes:	
Default Codes:	

Notes: This item has been retired from the NHS Data Model and Dictionary.

The total number of unscheduled first attendances where the PATIENT reported a waiting time within 2 normal working days (excluding bank holidays and weekends):

- a: the CARE CONTACT TYPE is National Code 40 - 'Genitourinary Care Contact'
- and
- b: FIRST ATTENDANCE is National Code 1 - 'First attendance face to face'
- and
- c: ATTENDED OR DID NOT ATTEND is National Code 5 - 'Attended on time or, if late, before the relevant CARE PROFESSIONAL was ready to see the PATIENT'

- and
- d: APPOINTMENT BOOKING TYPE is National Code 02 - 'Unscheduled Appointment'
- and
- e: PATIENT REPORTED WAIT is National Code 01 - '2 working days or less'
- and
- f: the Genitourinary Care Contact Date is within the REPORTING PERIOD.
- and
- g: the GENITOURINARY CONTACT TYPE CODE excludes National Code 06 - 'Human immunodeficiency virus (HIV)'

The last live version of this item is available in the November 2013 release of the NHS Data Model and Dictionary.

Access to this version can be obtained by emailing information.standards@hscic.gov.uk with "NHS Data Model and Dictionary - Archive Request" in the email subject line.

PATIENT PERSPECTIVE ON WAITING TIMES - UNSCHEDULED ATTENDANCES WITHIN 2 DAYS TOTAL (RETIRED) renamed from **PATIENT PERSPECTIVE ON WAITING TIMES - UNSCHEDULED ATTENDANCES WITHIN 2 DAYS TOTAL**

Change to Data Element: Changed Description, Name, status to Retired

- Changed Description
- Changed Name from Data_Dictionary.Data_Field_Notes.P.Pat.PATIENT_PERSPECTIVE_ON_WAITING_TIMES_-_UNSCHEDULED_ATTENDANCES_WITHIN_2_DAYS_TOTAL to Retired.Data_Dictionary.Data_Field_Notes.P.PATIENT_PERSPECTIVE_ON_WAITING_TIMES_-_UNSCHEDULED_ATTENDANCES_WITHIN_2_DAYS_TOTAL
- Retired PATIENT PERSPECTIVE ON WAITING TIMES - UNSCHEDULED ATTENDANCES WITHIN 2 DAYS TOTAL

PATIENTS REGISTERED BUT NOT OFFERED AN APPOINTMENT TOTAL (RETIRED) renamed from **PATIENTS REGISTERED BUT NOT OFFERED AN APPOINTMENT TOTAL**

Change to Data Element: Changed Description, Name, status to Retired

Format/length:	no
HES item:	
National Codes:	
Default Codes:	

Notes:

The total number of PATIENTS who made a Genitourinary Medicine REFERRAL REQUEST but did not receive an APPOINTMENT OFFER or an APPOINTMENT DATE, that is where: **This item has been retired from the NHS Data Model and Dictionary.**

- a: there is no APPOINTMENT OFFER
- or
- b: there is no APPOINTMENT ACCEPTED DATE
- and
- e: REFERRAL REQUEST RECEIVED DATE is within the REPORTING PERIOD.
- and
- d: the GENITOURINARY CONTACT TYPE CODE excludes National Code 06 - 'Human immunodeficiency virus (HIV)'

This should include PATIENTS that attend a CLINIC OR FACILITY with or without prior notice or APPOINTMENT who leave or are turned away before accessing the SERVICE. **The last live version of this item is available in the November 2013 release of the NHS Data Model and Dictionary.**

Access to this version can be obtained by emailing information.standards@hscic.gov.uk with "NHS Data Model and Dictionary - Archive Request" in the email subject line.

PATIENTS REGISTERED BUT NOT OFFERED AN APPOINTMENT TOTAL (RETIRED) renamed from **PATIENTS REGISTERED BUT NOT OFFERED AN APPOINTMENT TOTAL**

Change to Data Element: Changed Description, Name, status to Retired

- Changed Description
- Changed Name from Data_Dictionary.Data_Field_Notes.P.Pat.PATIENTS_REGISTERED_BUT_NOT_OFFERED_AN_APPOINTMENT_TOTAL to Retired.Data_Dictionary.Data_Field_Notes.P.PATIENTS_REGISTERED_BUT_NOT_OFFERED_AN_APPOINTMENT_TOTAL
- Retired PATIENTS REGISTERED BUT NOT OFFERED AN APPOINTMENT TOTAL

PATIENTS REPORTING SYMPTOMS TOTAL (RETIRED) renamed from **PATIENTS REPORTING SYMPTOMS TOTAL**

Change to Data Element: Changed Description, Name, status to Retired

Format/length:	n6
HES item:	
National Codes:	
Default Codes:	

Notes:

The total number of first attendances where the PATIENT reports the presence of symptoms. **This item has been retired from the NHS Data Model and Dictionary.**

- a. PATIENT-REPORTED SYMPTOMS INDICATOR is National Code 1 - 'PATIENT reports presence of symptoms (symptomatic)'
- and
- b. the CARE CONTACT TYPE is National Code 40 - 'Genitourinary Care Contact'
- and
- c. FIRST ATTENDANCE is National Code 1 - 'First attendance face to face'
- and
- d. ATTENDED OR DID NOT ATTEND is either National Code 5 - 'Attended on time or, if late, before the relevant CARE PROFESSIONAL was ready to see the PATIENT' or National Code 6 - 'Arrived late, after the relevant CARE PROFESSIONAL was ready to see the PATIENT, but was seen'
- and
- e. the Genitourinary Care Contact Date is within the REPORTING PERIOD.
- and
- f. the GENITOURINARY CONTACT TYPE CODE excludes National Code 06 - 'Human immunodeficiency virus (HIV)'

This includes Scheduled Appointments and Unscheduled Appointments. **The last live version of this item is available in the November 2013 release of the NHS Data Model and Dictionary.**

Access to this version can be obtained by emailing information.standards@hscic.gov.uk with "NHS Data Model and Dictionary - Archive Request" in the email subject line.

PATIENTS REPORTING SYMPTOMS TOTAL (RETIRED)_ renamed from PATIENTS REPORTING SYMPTOMS TOTAL

Change to Data Element: Changed Description, Name, status to Retired

- Changed Description
- Changed Name from Data_Dictionary.Data_Field_Notes.P.Pat.PATIENTS_REPORTING_SYMPTOMS_TOTAL to Retired.Data_Dictionary.Data_Field_Notes.P.PATIENTS_REPORTING_SYMPTOMS_TOTAL
- Retired PATIENTS REPORTING SYMPTOMS TOTAL

SCHEDULED ATTENDANCES - RESPONSES TO PATIENT WAIT QUESTION TOTAL (RETIRED)_ renamed from SCHEDULED ATTENDANCES - RESPONSES TO PATIENT WAIT QUESTION TOTAL

Change to Data Element: Changed Description, Name, status to Retired

Format/length:	n6
HES item:	
National Codes:	
Default Codes:	

Notes: **This item has been retired from the NHS Data Model and Dictionary.**

The total number of scheduled first attendances where the:

- a. the CARE CONTACT TYPE is National Code 40 - 'Genitourinary Care Contact'
- and
- b. FIRST ATTENDANCE is National Code 1 - 'First attendance face to face'
- and
- c. ATTENDED OR DID NOT ATTEND is either National Code 5 - 'Attended on time or, if late, before the relevant CARE PROFESSIONAL was ready to see the PATIENT' or National Code 6 - 'Arrived late, after the relevant CARE PROFESSIONAL was ready to see the PATIENT, but was seen'
- and
- d. APPOINTMENT BOOKING TYPE is National Code 01 - 'Scheduled appointment'
- and
- e. PATIENT REPORTED WAIT is National Code 01 - '2 working days or less' or National Code 02 - 'Over 2 working days but less than a week' or National Code 03 - 'Over a week but less than 2 weeks' or National Code 04 - 'Over 2 weeks'
- and
- f. the Genitourinary Care Contact Date is within the REPORTING PERIOD.
- and
- g. the GENITOURINARY CONTACT TYPE CODE excludes National Code 06 - 'Human immunodeficiency virus (HIV)'

The last live version of this item is available in the November 2013 release of the NHS Data Model and Dictionary.

Access to this version can be obtained by emailing information.standards@hscic.gov.uk with "NHS Data Model and Dictionary - Archive Request" in the email subject line.

SCHEDULED ATTENDANCES - RESPONSES TO PATIENT WAIT QUESTION TOTAL (RETIRED)_ renamed from SCHEDULED ATTENDANCES - RESPONSES TO PATIENT WAIT QUESTION TOTAL

Change to Data Element: Changed Description, Name, status to Retired

- Changed Description
- Changed Name from Data_Dictionary.Data_Field_Notes.S.Sc.SCHEDULED_ATTENDANCES_-_RESPONSES_TO_PATIENT_WAIT_QUESTION_TOTAL to Retired.Data_Dictionary.Data_Field_Notes.S.SCHEDULED_ATTENDANCES_-_RESPONSES_TO_PATIENT_WAIT_QUESTION_TOTAL
- Retired SCHEDULED ATTENDANCES - RESPONSES TO PATIENT WAIT QUESTION TOTAL

UNSCHEDULED ATTENDANCES - RESPONSES TO PATIENT WAIT QUESTION TOTAL (RETIRED)_ renamed from UNSCHEDULED ATTENDANCES - RESPONSES TO PATIENT WAIT QUESTION TOTAL

Change to Data Element: Changed Description, Name, status to Retired

Format/length:	n6
HES item:	
National Codes:	
Default Codes:	

Notes: This item has been retired from the NHS Data Model and Dictionary.

The total number of unscheduled first attendances where the:

- a: the CARE CONTACT TYPE is National Code 40 - 'Genitourinary Care Contact'
- and
- b: FIRST ATTENDANCE is National Code 1 - 'First attendance face to face'
- and
- c: ATTENDED OR DID NOT ATTEND is National Code 5 - 'Attended on time or, if late, before the relevant CARE PROFESSIONAL was ready to see the PATIENT'
- and
- d: APPOINTMENT BOOKING TYPE is National Code 02 - 'Unscheduled appointment'
- and
- e: PATIENT REPORTED WAIT is National Code 01 - '2 working days or less' or National Code 02 - 'Over 2 working days but less than a week' or National Code 03 - 'Over a week but less than 2 weeks' or National Code 04 - 'Over 2 weeks'
- and
- f: the Genitourinary Care Contact Date is within the REPORTING PERIOD.
- and
- g: the GENITOURINARY CONTACT TYPE CODE excludes National Code 06 - 'Human immunodeficiency virus (HIV)'

The last live version of this item is available in the November 2013 release of the NHS Data Model and Dictionary.

Access to this version can be obtained by emailing information.standards@hscic.gov.uk with "NHS Data Model and Dictionary - Archive Request" in the email subject line.

UNSCHEDULED ATTENDANCES - RESPONSES TO PATIENT WAIT QUESTION TOTAL (RETIRED)_ renamed from UNSCHEDULED ATTENDANCES - RESPONSES TO PATIENT WAIT QUESTION TOTAL

Change to Data Element: Changed Description, Name, status to Retired

- Changed Description
- Changed Name from Data_Dictionary.Data_Field_Notes.U.Un.UNSCHEDULED_ATTENDANCES_-_RESPONSES_TO_PATIENT_WAIT_QUESTION_TOTAL to Retired.Data_Dictionary.Data_Field_Notes.U.UNSCHEDULED_ATTENDANCES_-_RESPONSES_TO_PATIENT_WAIT_QUESTION_TOTAL
- Retired UNSCHEDULED ATTENDANCES - RESPONSES TO PATIENT WAIT QUESTION TOTAL

For enquiries about this Change Request, please email information.standards@hscic.gov.uk