

## Health and Social Care Information Centre

### NHS Data Model and Dictionary Service

**Type:** Data Dictionary Change Notice  
**Reference:** 1436  
**Version No:** 1.0  
**Subject:** Retirement of Standards  
**Effective Date:** 1 April 2014  
**Reason for Change:** Retirement of Standards  
**Publication Date:** 27 February 2014

#### Background:

The Information Standards Board for Health and Social Care (ISB) has conducted a review of all Data Set Change Notices (DSCNs) and Information Standards Notices (ISNs) issued since 1987, to update its portfolio of standards prior to the handover of responsibility to NHS England, the Health and Social Care Information (HSCIC) and Public Health England. The full list can be found on the ISB [Advanced Notification - Withdrawal](#) issued 26/09/13.

This review has identified a number of items in the NHS Data Model and Dictionary which do not have a Data Set Change Notice or Information Standards Notice and are not used within a data set in the NHS Data Model and Dictionary.

This Data Dictionary Change Notice (DDCN) retires items in the NHS Data Model and Dictionary which fit into this category.

To view a demonstration on "How to Read an NHS Data Model and Dictionary Change Request", visit the NHS Data Model and Dictionary help pages at: [http://www.datadictionary.nhs.uk/Flash\\_Files/changerequest.htm](http://www.datadictionary.nhs.uk/Flash_Files/changerequest.htm).

Note: if the web page does not open, please copy the link and paste into the web browser.

#### Summary of changes:

##### Diagrams

[DIAGNOSTIC IMAGING DIAGRAM](#)

Changed Diagram

[HEALTH PROGRAMME DIAGRAM](#)

Changed Diagram

##### Class Definitions

[PATIENT TRANSPORT JOURNEY](#)

Changed Attributes

[PERSON IN PROGRAMME](#)

Changed Attributes

[SERVICE REPORT](#)

Changed Description, Attributes

[WARD OPERATIONAL PLAN](#)

Changed Attributes

##### Attribute Definitions

[AMBULANCE SERVICE TRANSPORT TYPE \(RETIRED\)](#) renamed from [AMBULANCE SERVICE TRANSPORT TYPE](#)

Changed Description, status to Retired, Name

[MATERNAL RUBELLA STATUS \(RETIRED\)](#) renamed from [MATERNAL RUBELLA STATUS](#)

Changed Description, status to Retired, Name

[NURSING EPISODE END REASON \(RETIRED\)](#) renamed from [NURSING EPISODE END REASON](#)

Changed Description, status to Retired, Name

[PERSON FOUND DATE \(RETIRED\)](#) renamed from [PERSON FOUND DATE](#)

Changed Description, status to Retired, Name

[PICK-UP TIME PROMISED \(RETIRED\)](#) renamed from [PICK-UP TIME](#)

Changed Description, status to

<u>PROMISED</u>		Retired, Name
<u>PLANNED WARD LISTING TIME (RETIRED)</u>	renamed from <u>PLANNED WARD LISTING TIME</u>	Changed Description, status to Retired, Name
<u>SERVICE REPORT AUTHORISATION DATE (RETIRED)</u>	renamed from <u>SERVICE REPORT AUTHORISATION DATE</u>	Changed Description, status to Retired, Name
<u>SERVICE REPORT AUTHORISATION TIME (RETIRED)</u>	renamed from <u>SERVICE REPORT AUTHORISATION TIME</u>	Changed Description, status to Retired, Name
<u>SERVICE REPORT COMMENT (RETIRED)</u>	renamed from <u>SERVICE REPORT COMMENT</u>	Changed Description, status to Retired, Name
<u>SERVICE REPORT ISSUE TIME (RETIRED)</u>	renamed from <u>SERVICE REPORT ISSUE TIME</u>	Changed Description, status to Retired, Name
<u>SERVICE REPORT TYPE (RETIRED)</u>	renamed from <u>SERVICE REPORT TYPE</u>	Changed Description, status to Retired, Name
<u>WARD PLAN TOTAL BED CONSULTANT CARE (RETIRED)</u>	renamed from <u>WARD PLAN TOTAL BED CONSULTANT CARE</u>	Changed Description, status to Retired, Name
<u>WARD PLAN TOTAL BED NURSING CARE (RETIRED)</u>	renamed from <u>WARD PLAN TOTAL BED NURSING CARE</u>	Changed Description, status to Retired, Name

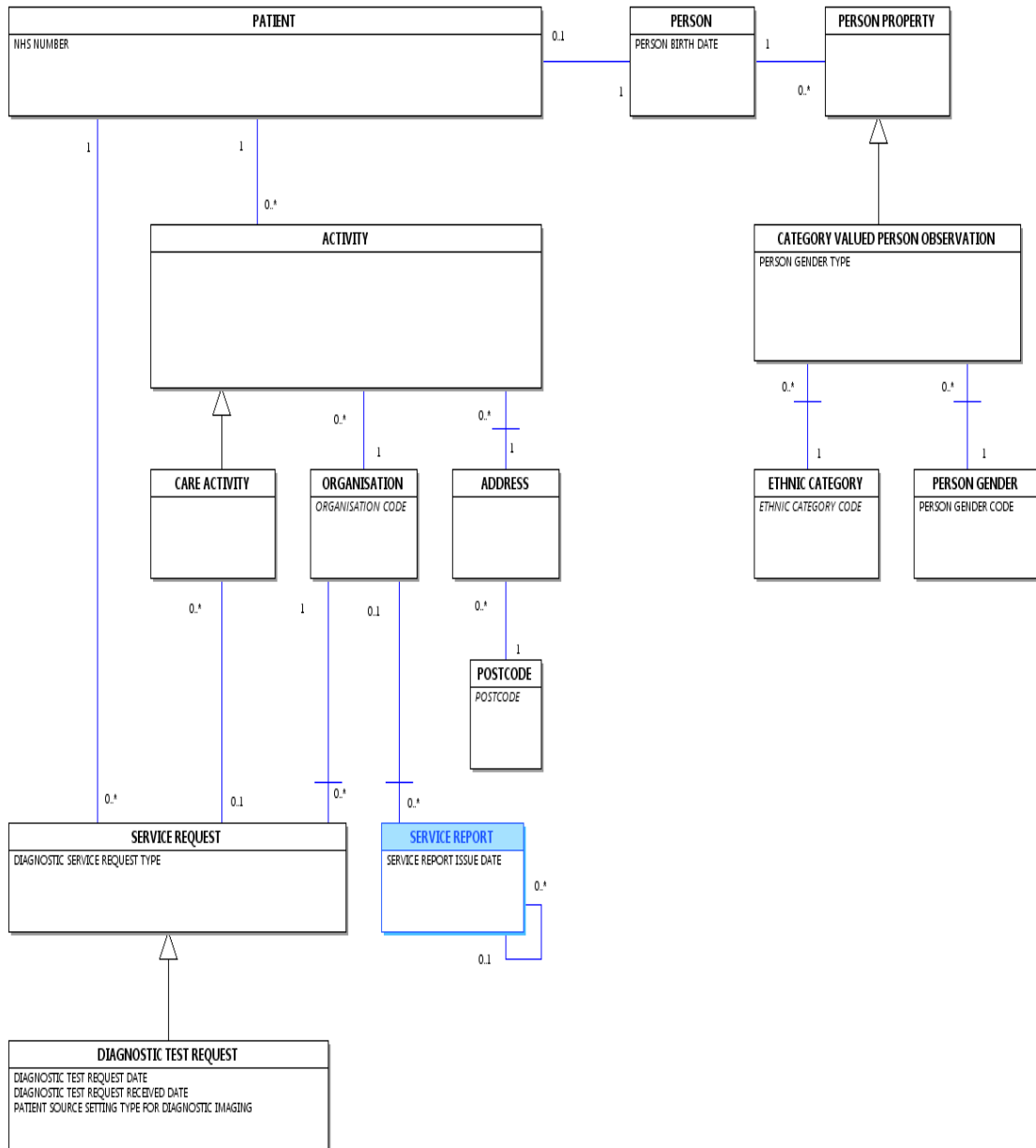
**Date:** 27 February 2014

**Sponsor:** Dr K. Lunn, Director of Information Standards Delivery. Health and Social Care Information Centre

**Note:** New text is shown with a blue background. Deleted text is crossed out. Retired text is shown in grey. Within the Diagrams deleted classes and relationships are red, changed items are blue and new items are green.

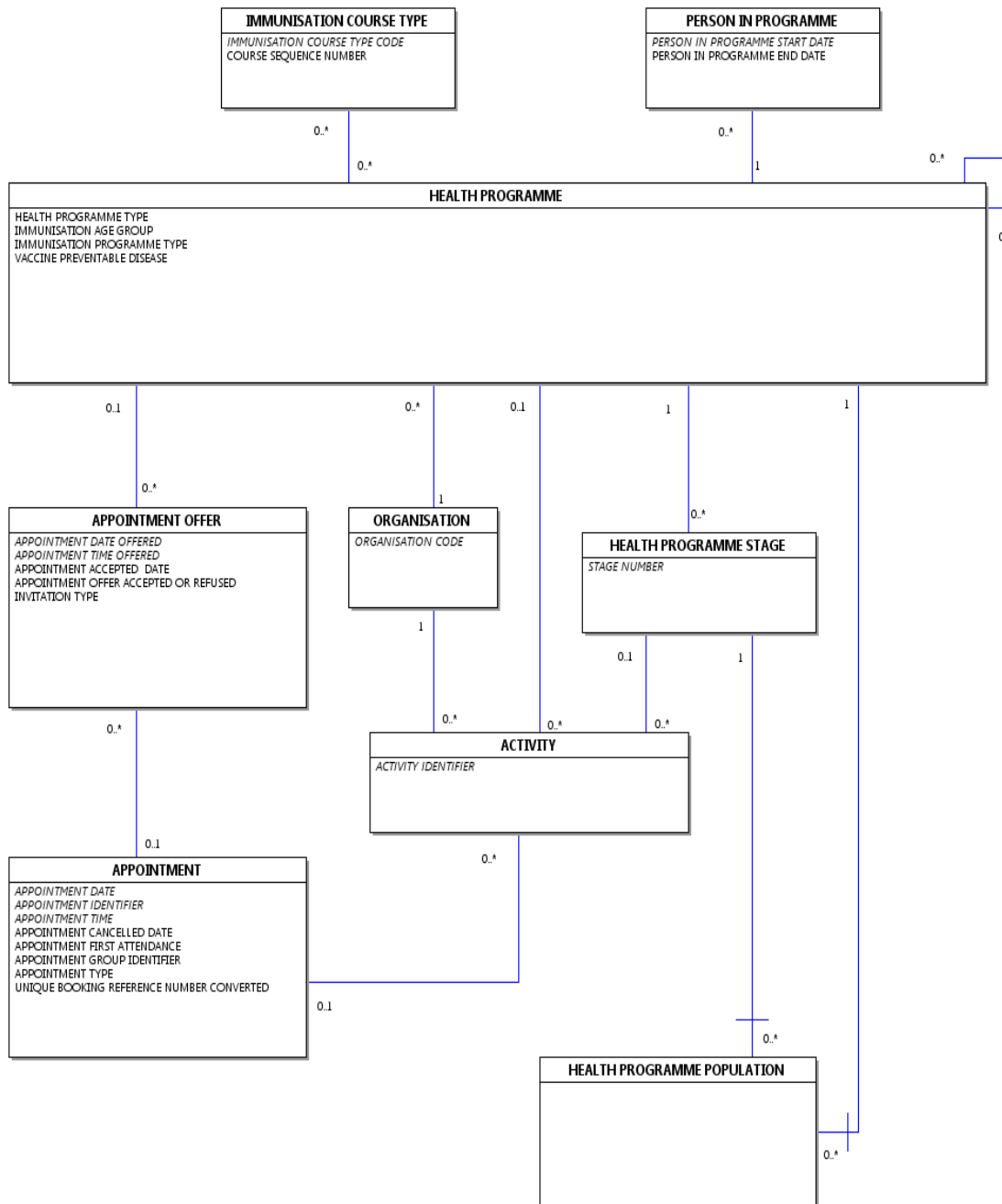
# DIAGNOSTIC IMAGING DIAGRAM

Change to Diagram: Changed Diagram



## HEALTH PROGRAMME DIAGRAM

Change to Diagram: Changed Diagram



## PATIENT TRANSPORT JOURNEY

Change to Class: Changed Attributes

Attributes of this Class are:

- K PATIENT JOURNEY NUMBER
- ACTUAL PICK-UP TIME
- AMBULANCE SERVICE TRANSPORT TYPE
- PATIENT JOURNEY DATE

PATIENT TRANSPORT ARRIVAL DATE  
PATIENT TRANSPORT JOURNEY PROVIDER TYPE  
PATIENT TRANSPORT RETURN JOURNEY INDICATOR  
PERSON ACCOMPANYING TRANSPORTED PATIENT  
~~PICK-UP TIME PROMISED~~

---

## PERSON IN PROGRAMME

---

Change to Class: Changed Attributes

*Attributes of this Class are:*

K PERSON IN PROGRAMME START DATE  
BREAST SCREENING CALL STATUS  
DISEASE FOUND INDICATOR  
MATERNAL HB STATUS  
~~PERSON FOUND DATE~~  
PERSON IN PROGRAMME END DATE  
REASON FOR NO START OR COMPLETION  
SCREENING STATUS  
TRACED INDICATOR

---

## SERVICE REPORT

---

Change to Class: Changed Description, Attributes

~~A [SERVICE REPORT](#) where the report relates to the treatment of a [PATIENT](#) or the response to request for specialist services for a [PATIENT](#) by a [Health Care Provider](#).~~ A [SERVICE REPORT](#) relating to the treatment of a [PATIENT](#) or the response to a request for specialist services for a [PATIENT](#) by a [Health Care Provider](#).

A copy of a [SERVICE REPORT](#) may be sent to a party other than the provider or the requester of the [SERVICE](#) or the [PLANNED ACTIVITY](#).

~~[SERVICE REPORT TYPE](#) provides a list of [SERVICE REPORTS](#).~~

---

## SERVICE REPORT

---

Change to Class: Changed Description, Attributes

*Attributes of this Class are:*

K SERVICE REPORT IDENTIFIER  
RADIOLOGY SERVICE REPORT URGENCY  
~~SERVICE REPORT AUTHORISATION DATE~~  
~~SERVICE REPORT AUTHORISATION TIME~~  
~~SERVICE REPORT COMMENT~~  
SERVICE REPORT ISSUE DATE  
~~SERVICE REPORT ISSUE TIME~~  
SERVICE REPORT STATUS  
~~SERVICE REPORT TYPE~~

---

## WARD OPERATIONAL PLAN

---

Change to Class: Changed Attributes

Attributes of this Class are:

K            WARD OPERATIONAL PLAN START DATE  
              AGE GROUP INTENDED  
              AUGMENTED CARE LOCATION CODE  
              CLINICAL CARE INTENSITY  
              IC OR HD BEDS INDICATOR  
~~PLANNED WARD LISTING TIME~~  
              SEX OF PATIENTS  
              WARD AVAILABLE BED  
              WARD DAY NIGHT INDICATOR  
              WARD DAY PERIOD AVAILABILITY  
              WARD NIGHT PERIOD AVAILABILITY  
              WARD OPERATIONAL PLAN END DATE  
~~WARD PLAN TOTAL BED CONSULTANT CARE~~  
~~WARD PLAN TOTAL BED NURSING CARE~~

---

### AMBULANCE SERVICE TRANSPORT TYPE (RETIRED)\_ renamed from AMBULANCE SERVICE TRANSPORT TYPE

---

Change to Attribute: Changed Description, status to Retired, Name

The type of transport provided by an [ORGANISATION](#). **This item has been retired from the NHS Data Model and Dictionary.**

**National Codes:** **The last live version of this item is available in the February 2014 release of the NHS Data Model and Dictionary.**

- 01    Directly provided (by [Ambulance Service](#) vehicle)
- 02    Hospital car service - organised by [Ambulance Services](#) for [PATIENTS](#) who do not need to be attended by trained ambulance staff. This uses volunteer drivers who transport [PATIENTS](#) in their own cars and are paid a mileage allowance to cover their expenses
- 03    Non-NHS Agency Service - includes those covered by a contractual agreement for the provision of a regular [Ambulance Service](#) by a voluntary or other body or [PERSON](#) on behalf of an [Ambulance Service](#)
- 04    Rail
- 05    Air
- \*    Other

**Access to this version can be obtained by emailing [information.standards@hscic.gov.uk](mailto:information.standards@hscic.gov.uk) with "NHS Data Model and Dictionary - Archive Request" in the email subject line.**

---

### AMBULANCE SERVICE TRANSPORT TYPE (RETIRED)\_ renamed from AMBULANCE SERVICE TRANSPORT TYPE

---

Change to Attribute: Changed Description, status to Retired, Name

- Changed Description
- Retired AMBULANCE SERVICE TRANSPORT TYPE
- Changed Name from Data\_Dictionary.Attributes.A.Age.AMBULANCE\_SERVICE\_TRANSPORT\_TYPE to Retired.Data\_Dictionary.Attributes.A.AMBULANCE\_SERVICE\_TRANSPORT\_TYPE

---

### MATERNAL RUBELLA STATUS (RETIRED)\_ renamed from MATERNAL RUBELLA STATUS

---

Change to Attribute: Changed Description, status to Retired, Name

~~The mother's rubella antibody status. This forms part of the maternity clinical option.~~ **This item has been retired from the NHS Data Model and Dictionary.**

**Classification:** **The last live version of this item is available in the February 2014 release of the NHS Data Model and Dictionary.**

- a: Previous test positive
- b: Test taken – positive result
- c: Test taken – negative result
- d: Test not taken

**Access to this version can be obtained by emailing [information.standards@hscic.gov.uk](mailto:information.standards@hscic.gov.uk) with "NHS Data Model and Dictionary - Archive Request" in the email subject line.**

---

## **MATERNAL RUBELLA STATUS (RETIRED)\_ renamed from MATERNAL RUBELLA STATUS**

---

Change to Attribute: Changed Description, status to Retired, Name

- Changed Description
- Retired MATERNAL RUBELLA STATUS
- Changed Name from Data\_Dictionary.Attributes.M.MATERNAL\_RUBELLA\_STATUS to Retired.Data\_Dictionary.Attributes.M.MATERNAL\_RUBELLA\_STATUS

---

## **NURSING EPISODE END REASON (RETIRED)\_ renamed from NURSING EPISODE END REASON**

---

Change to Attribute: Changed Description, status to Retired, Name

~~The reason for ending the episode.~~ **This item has been retired from the NHS Data Model and Dictionary.**

**Classification:** **The last live version of this item is available in the February 2014 release of the NHS Data Model and Dictionary.**

- a: Died
- b: Transfer of care
- c: Self discharged
- d: Discharged on nursing advice

**Access to this version can be obtained by emailing [information.standards@hscic.gov.uk](mailto:information.standards@hscic.gov.uk) with "NHS Data Model and Dictionary - Archive Request" in the email subject line.**

---

## **NURSING EPISODE END REASON (RETIRED)\_ renamed from NURSING EPISODE END REASON**

---

Change to Attribute: Changed Description, status to Retired, Name

- Changed Description
- Retired NURSING EPISODE END REASON
- Changed Name from Data\_Dictionary.Attributes.N.No.NURSING\_EPISODE\_END\_REASON to Retired.Data\_Dictionary.Attributes.N.NURSING\_EPISODE\_END\_REASON

---

## **PERSON FOUND DATE (RETIRED)\_ renamed from PERSON FOUND DATE**

---

Change to Attribute: Changed Description, status to Retired, Name

~~The date when a [PERSON](#) who is being traced is found.~~ **This item has been retired from the NHS Data Model and Dictionary.**

**The last live version of this item is available in the February 2014 release of the NHS Data Model and Dictionary.**

**Access to this version can be obtained by emailing [information.standards@hscic.gov.uk](mailto:information.standards@hscic.gov.uk) with "NHS Data Model and Dictionary - Archive Request" in the email subject line.**

---

## PERSON FOUND DATE (RETIRED)\_ renamed from PERSON FOUND DATE

---

Change to Attribute: Changed Description, status to Retired, Name

- Changed Description
- Retired PERSON FOUND DATE
- Changed Name from Data\_Dictionary.Attributes.P.Person.PERSON\_FOUND\_DATE to Retired.Data\_Dictionary.Attributes.P.PERSON\_FOUND\_DATE

---

## PICK-UP TIME PROMISED (RETIRED)\_ renamed from PICK-UP TIME PROMISED

---

Change to Attribute: Changed Description, status to Retired, Name

~~The time promised for an [Ambulance](#) to arrive to collect a [PATIENT](#) to take them home when a doctor has stated a need for NHS transport.~~ **This item has been retired from the NHS Data Model and Dictionary.**

**The last live version of this item is available in the February 2014 release of the NHS Data Model and Dictionary.**

**Access to this version can be obtained by emailing [information.standards@hscic.gov.uk](mailto:information.standards@hscic.gov.uk) with "NHS Data Model and Dictionary - Archive Request" in the email subject line.**

---

## PICK-UP TIME PROMISED (RETIRED)\_ renamed from PICK-UP TIME PROMISED

---

Change to Attribute: Changed Description, status to Retired, Name

- Changed Description
- Retired PICK-UP TIME PROMISED
- Changed Name from Data\_Dictionary.Attributes.P.Pha.PICK-UP\_TIME\_PROMISED to Retired.Data\_Dictionary.Attributes.P.PICK-UP\_TIME\_PROMISED

---

## PLANNED WARD LISTING TIME (RETIRED)\_ renamed from PLANNED WARD LISTING TIME

---

Change to Attribute: Changed Description, status to Retired, Name

~~This records the planned time of the [DAILY WARD LISTING](#).~~ **This item has been retired from the NHS Data Model and Dictionary.**

~~For a [WARD](#) open overnight, the time of the listing should be midnight.~~ **The last live version of this item is**



available in the February 2014 release of the NHS Data Model and Dictionary.

For a [WARD](#) open only during the day, the time of the listing should be the middle of the working day. Access to this version can be obtained by emailing [information.standards@hscic.gov.uk](mailto:information.standards@hscic.gov.uk) with "NHS Data Model and Dictionary - Archive Request" in the email subject line.

---

## PLANNED WARD LISTING TIME (RETIRED)\_ renamed from PLANNED WARD LISTING TIME

---

Change to Attribute: Changed Description, status to Retired, Name

- Changed Description
- Retired PLANNED WARD LISTING TIME
- Changed Name from Data\_Dictionary.Attributes.P.Pha.PLANNED\_WARD\_LISTING\_TIME to Retired.Data\_Dictionary.Attributes.P.PLANNED\_WARD\_LISTING\_TIME

---

## SERVICE REPORT AUTHORISATION DATE (RETIRED)\_ renamed from SERVICE REPORT AUTHORISATION DATE

---

Change to Attribute: Changed Description, status to Retired, Name

The date when a [SERVICE REPORT](#) is authorised. This item has been retired from the NHS Data Model and Dictionary.

The last live version of this item is available in the February 2014 release of the NHS Data Model and Dictionary.

Access to this version can be obtained by emailing [information.standards@hscic.gov.uk](mailto:information.standards@hscic.gov.uk) with "NHS Data Model and Dictionary - Archive Request" in the email subject line.

---

## SERVICE REPORT AUTHORISATION DATE (RETIRED)\_ renamed from SERVICE REPORT AUTHORISATION DATE

---

Change to Attribute: Changed Description, status to Retired, Name

- Changed Description
- Retired SERVICE REPORT AUTHORISATION DATE
- Changed Name from Data\_Dictionary.Attributes.S.Ser.SERVICE\_REPORT\_AUTHORISATION\_DATE to Retired.Data\_Dictionary.Attributes.S.SERVICE\_REPORT\_AUTHORISATION\_DATE

---

## SERVICE REPORT AUTHORISATION TIME (RETIRED)\_ renamed from SERVICE REPORT AUTHORISATION TIME

---

Change to Attribute: Changed Description, status to Retired, Name

The time when a [SERVICE REPORT](#) is authorised. This item has been retired from the NHS Data Model and Dictionary.

The last live version of this item is available in the February 2014 release of the NHS Data Model and Dictionary.

Access to this version can be obtained by emailing [information.standards@hscic.gov.uk](mailto:information.standards@hscic.gov.uk) with "NHS Data Model and Dictionary - Archive Request" in the email subject line.

---

## SERVICE REPORT AUTHORISATION TIME (RETIRED)\_ renamed from SERVICE REPORT AUTHORISATION TIME

---

Change to Attribute: Changed Description, status to Retired, Name

- Changed Description
- Retired SERVICE REPORT AUTHORISATION TIME
- Changed Name from Data\_Dictionary.Attributes.S.Ser.SERVICE\_REPORT\_AUTHORISATION\_TIME to Retired.Data\_Dictionary.Attributes.S.SERVICE\_REPORT\_AUTHORISATION\_TIME

---

## SERVICE REPORT COMMENT (RETIRED)\_ renamed from SERVICE REPORT COMMENT

---

Change to Attribute: Changed Description, status to Retired, Name

~~Additional information for the report. This may include information on advice given to the [PATIENT](#) or to relatives in a discharge or out-patient report or a provisional cause of death in a hospital death notification. This item has been retired from the NHS Data Model and Dictionary.~~

The last live version of this item is available in the February 2014 release of the NHS Data Model and Dictionary.

Access to this version can be obtained by emailing [information.standards@hscic.gov.uk](mailto:information.standards@hscic.gov.uk) with "NHS Data Model and Dictionary - Archive Request" in the email subject line.

---

## SERVICE REPORT COMMENT (RETIRED)\_ renamed from SERVICE REPORT COMMENT

---

Change to Attribute: Changed Description, status to Retired, Name

- Changed Description
- Retired SERVICE REPORT COMMENT
- Changed Name from Data\_Dictionary.Attributes.S.Ser.SERVICE\_REPORT\_COMMENT to Retired.Data\_Dictionary.Attributes.S.SERVICE\_REPORT\_COMMENT

---

## SERVICE REPORT ISSUE TIME (RETIRED)\_ renamed from SERVICE REPORT ISSUE TIME

---

Change to Attribute: Changed Description, status to Retired, Name

~~The time when a [SERVICE REPORT](#) is completed. This item has been retired from the NHS Data Model and Dictionary.~~

The last live version of this item is available in the February 2014 release of the NHS Data Model and Dictionary.

Access to this version can be obtained by emailing [information.standards@hscic.gov.uk](mailto:information.standards@hscic.gov.uk) with "NHS Data Model and Dictionary - Archive Request" in the email subject line.

---

## SERVICE REPORT ISSUE TIME (RETIRED)\_ renamed from SERVICE REPORT ISSUE TIME

---

Change to Attribute: Changed Description, status to Retired, Name

- Changed Description
  - Retired SERVICE REPORT ISSUE TIME
  - Changed Name from Data\_Dictionary.Attributes.S.Ser.SERVICE\_REPORT\_ISSUE\_TIME to Retired.Data\_Dictionary.Attributes.S.SERVICE\_REPORT\_ISSUE\_TIME
- 

## SERVICE REPORT TYPE (RETIRED)\_ renamed from SERVICE REPORT TYPE

---

Change to Attribute: Changed Description, status to Retired, Name

The type of [SERVICE REPORT](#) ~~This item has been retired from the NHS Data Model and Dictionary.~~

~~National Codes:~~ **The last live version of this item is available in the February 2014 release of the NHS Data Model and Dictionary.**

- 01 [Pathology Laboratory Service Report](#)
- 02 [Radiology Service Report](#)

**Access to this version can be obtained by emailing [information.standards@hscic.gov.uk](mailto:information.standards@hscic.gov.uk) with "NHS Data Model and Dictionary - Archive Request" in the email subject line.**

---

## SERVICE REPORT TYPE (RETIRED)\_ renamed from SERVICE REPORT TYPE

---

Change to Attribute: Changed Description, status to Retired, Name

- Changed Description
  - Retired SERVICE REPORT TYPE
  - Changed Name from Data\_Dictionary.Attributes.S.Ser.SERVICE\_REPORT\_TYPE to Retired.Data\_Dictionary.Attributes.S.SERVICE\_REPORT\_TYPE
- 

## WARD PLAN TOTAL BED CONSULTANT CARE (RETIRED)\_ renamed from WARD PLAN TOTAL BED CONSULTANT CARE

---

Change to Attribute: Changed Description, status to Retired, Name

~~This records the number of [Hospital Beds](#) intended to be available in a [WARD](#) which are allocated for use by [PATIENTS](#) under the care of a [CONSULTANT](#).~~ **This item has been retired from the NHS Data Model and Dictionary.**

**The last live version of this item is available in the February 2014 release of the NHS Data Model and Dictionary.**

**Access to this version can be obtained by emailing [information.standards@hscic.gov.uk](mailto:information.standards@hscic.gov.uk) with "NHS Data Model and Dictionary - Archive Request" in the email subject line.**

---

## WARD PLAN TOTAL BED CONSULTANT CARE (RETIRED)\_ renamed from WARD PLAN TOTAL BED CONSULTANT CARE

---

Change to Attribute: Changed Description, status to Retired, Name

- Changed Description
- Retired WARD PLAN TOTAL BED CONSULTANT CARE
- Changed Name from Data\_Dictionary.Attributes.W.Ward.WARD\_PLAN\_TOTAL\_BED\_CONSULTANT\_CARE to Retired.Data\_Dictionary.Attributes.W.WARD\_PLAN\_TOTAL\_BED\_CONSULTANT\_CARE

---

## **WARD PLAN TOTAL BED NURSING CARE (RETIRED)\_ renamed from WARD PLAN TOTAL BED NURSING CARE**

---

Change to Attribute: Changed Description, status to Retired, Name

~~This records the number of [Hospital Beds](#) intended to be available in a [WARD](#) which are allocated for use by [PATIENTS](#) under the care of a [NURSE](#).~~ **This item has been retired from the NHS Data Model and Dictionary.**

**The last live version of this item is available in the February 2014 release of the NHS Data Model and Dictionary.**

**Access to this version can be obtained by emailing [information.standards@hscic.gov.uk](mailto:information.standards@hscic.gov.uk) with "NHS Data Model and Dictionary - Archive Request" in the email subject line.**

---

## **WARD PLAN TOTAL BED NURSING CARE (RETIRED)\_ renamed from WARD PLAN TOTAL BED NURSING CARE**

---

Change to Attribute: Changed Description, status to Retired, Name

- Changed Description
- Retired WARD PLAN TOTAL BED NURSING CARE
- Changed Name from Data\_Dictionary.Attributes.W.Ward.WARD\_PLAN\_TOTAL\_BED\_NURSING\_CARE to Retired.Data\_Dictionary.Attributes.W.WARD\_PLAN\_TOTAL\_BED\_NURSING\_CARE

---

For enquiries about this Change Request, please email [information.standards@hscic.gov.uk](mailto:information.standards@hscic.gov.uk)