

Health and Social Care Information Centre

NHS Data Model and Dictionary Service

Type:	Data Dictionary Change Notice
Reference:	1435
Version No:	1.0
Subject:	Retirement of Standards - DSCNs 22/95/P21, 20/91, 21/93, 40/95/P34, 09/94/P04, 93/95/P76, 23/94/A04, 8/92 and 17/93.
Effective Date:	1 April 2014
Reason for Change:	Retirement of Data Standards
Publication Date:	26 February 2014

Background:

The Information Standards Board for Health and Social Care (ISB) has conducted a review of all Data Set Change Notices (DSCNs) and Information Standards Notices (ISNs) issued since 1987, to update its portfolio of standards prior to the handover of responsibility to NHS England, the Health and Social Care Information Centre (HSCIC) and Public Health England.

This review has identified a number of data standards in the NHS Data Model and Dictionary which have been superseded or are no longer in use.

This Data Dictionary Change Notice (DDCN) retires the items in the NHS Data Model and Dictionary in line with the retirement of the following Data Set Change Notices, as listed on the ISB [Advanced Notification - Withdrawal](#) issued 26/09/13:

- DSCN 22/95/P21 - Alignment with CMDS review
- DSCN 20/91 - Data Definitions
- DSCN 21/93 - New/amended/clarified/deleted entities/attributes
- DSCN 40/95/P34 - Clarification of the definition of A&E DEPARTURE TIME
- DSCN 09/94/P04 - Consultant Referrals and Extra Contractual Arrangements
- DSCN 93/95/P76 - Corrections and clarifications
- DSCN 23/94/A04 - Duplicated entity type and attribute names
- DSCN 8/92 - Data Definitions
- DSCN 17/93 - Miscellaneous Definitions
- DSCN 03/91 - Disablement Services

To view a demonstration on "How to Read an NHS Data Model and Dictionary Change Request", visit the NHS Data Model and Dictionary help pages at: http://www.datadictionary.nhs.uk/Flash_Files/changerequest.htm.

Note: if the web page does not open, please copy the link and paste into the web browser.

Summary of changes:

Diagrams

APPOINTMENTS DIAGRAM	Changed Diagram
CANCER OUTCOMES AND SERVICES DIAGRAM	Changed Diagram
HEALTH PROGRAMME DIAGRAM	Changed Diagram
HIV AND AIDS DIAGRAM	Changed Diagram
IMPROVING ACCESS TO PSYCHOLOGICAL THERAPIES DIAGRAM	Changed Diagram
LISTS DIAGRAM	Changed Diagram
PATIENT PATHWAY DIAGRAM	Changed Diagram

[PERSON AND PERSON PROPERTY DIAGRAM](#)
[REFERRAL REQUEST DIAGRAM](#)

Changed Diagram
Changed Diagram

Supporting Information

[CLINIC ATTENDANCE MIDWIFE](#)
[CLINIC ATTENDANCE SEXUAL AND REPRODUCTIVE HEALTH SERVICE](#)
[CONSULTANT OUT-PATIENT EPISODE](#)
[HEALTHY PERSON STAY](#) renamed from [HEALTHY PERSON STAY](#)
[PROFESSIONAL STAFF GROUP EPISODE](#)

Changed Description
Changed Description
Changed Description
Changed Name, Description
Changed Description

Class Definitions

[ACTIVITY GROUP](#)
[CARE CONTACT](#)
[CLINIC OR FACILITY](#)
[DAY CARE OPERATIONAL PLAN \(RETIRED\)](#) renamed from [DAY CARE OPERATIONAL PLAN](#)
[EDUCATIONAL ASSESSMENT](#)
[FUNCTIONAL DEFICIENCY \(RETIRED\)](#) renamed from [FUNCTIONAL DEFICIENCY](#)
[HEALTH PROGRAMME](#)
[PLANNED SERVICE](#)
[REFERRAL REQUEST](#)
[SERVICE REQUEST](#)
[WARD OPERATIONAL PLAN](#)

Changed Attributes
Changed Attributes
Changed Relationships
Changed Attributes, status to Retired, Name, Description
Changed Attributes
Changed Supertype, Attributes, status to Retired, Name, Description
Changed Attributes
Changed Attributes
Changed Attributes
Changed Attributes

Attribute Definitions

[ACCIDENT AND EMERGENCY STAFF TYPE \(RETIRED\)](#) renamed from [ACCIDENT AND EMERGENCY STAFF TYPE](#)
[ACTIVITY GROUP TYPE](#)
[ANTENATAL OR POSTNATAL INDICATOR \(RETIRED\)](#) renamed from [ANTENATAL OR POSTNATAL INDICATOR](#)
[CONTRACEPTIVE ADVICE GIVEN \(RETIRED\)](#) renamed from [CONTRACEPTIVE ADVICE GIVEN](#)
[DAY CARE OPERATIONAL PLAN END DATE \(RETIRED\)](#) renamed from [DAY CARE OPERATIONAL PLAN END DATE](#)
[DAY CARE OPERATIONAL PLAN START DATE \(RETIRED\)](#) renamed from [DAY CARE OPERATIONAL PLAN START DATE](#)
[DELIVERY FACILITIES ONLY USED \(RETIRED\)](#) renamed from [DELIVERY FACILITIES ONLY USED](#)
[EDUCATIONAL ASSESSMENT RESULT \(RETIRED\)](#) renamed from [EDUCATIONAL ASSESSMENT RESULT](#)
[FUNCTIONAL DEFICIENCY CAUSE \(RETIRED\)](#) renamed from [FUNCTIONAL DEFICIENCY CAUSE](#)
[FUNCTIONAL DEFICIENCY TYPE \(RETIRED\)](#) renamed from [FUNCTIONAL DEFICIENCY TYPE](#)
[HEALTHY PERSON STAY END DATE \(RETIRED\)](#) renamed from [HEALTHY PERSON STAY END DATE](#)
[HEALTHY PERSON STAY NUMBER \(RETIRED\)](#) renamed from [HEALTHY PERSON STAY NUMBER](#)
[HEALTHY PERSON STAY START DATE \(RETIRED\)](#) renamed from [HEALTHY PERSON STAY START DATE](#)
[HEALTHY PERSON STAY TYPE \(RETIRED\)](#) renamed from [HEALTHY PERSON STAY TYPE](#)
[NUMBER OF PLACE DAYS INTENDED AVAILABLE \(RETIRED\)](#) renamed from [NUMBER OF PLACE DAYS INTENDED AVAILABLE](#)
[OTHER REFERRER CODE \(RETIRED\)](#) renamed from [OTHER REFERRER CODE](#)
[REFERRAL REQUEST CANCELLED DATE \(RETIRED\)](#) renamed from [REFERRAL REQUEST CANCELLED DATE](#)

Changed status to Retired, Name, Description
Changed Description
Changed status to Retired, Name, Description
Changed status to Retired, Name, Description
Changed status to Retired, Name, Description
Changed status to Retired, Name, Description
Changed status to Retired, Name, Description
Changed status to Retired, Name, Description
Changed status to Retired, Name, Description
Changed status to Retired, Name, Description
Changed status to Retired, Name, Description
Changed status to Retired, Name, Description
Changed status to Retired, Name, Description
Changed status to Retired, Name, Description
Changed status to Retired, Name, Description
Changed status to Retired, Name, Description
Changed status to Retired, Name, Description
Changed status to Retired, Name, Description
Changed status to Retired, Name, Description
Changed status to Retired, Name, Description

SPECIAL FACILITY INDICATOR (RETIRED) renamed from SPECIAL FACILITY INDICATOR

Changed status to Retired, Name, Description

SURVEILLANCE PROGRAMME GROUP (RETIRED) renamed from SURVEILLANCE PROGRAMME GROUP

Changed status to Retired, Name, Description

WARD PLAN TOTAL BED MIDWIFE ACCESS (RETIRED) renamed from WARD PLAN TOTAL BED MIDWIFE ACCESS

Changed status to Retired, Name, Description

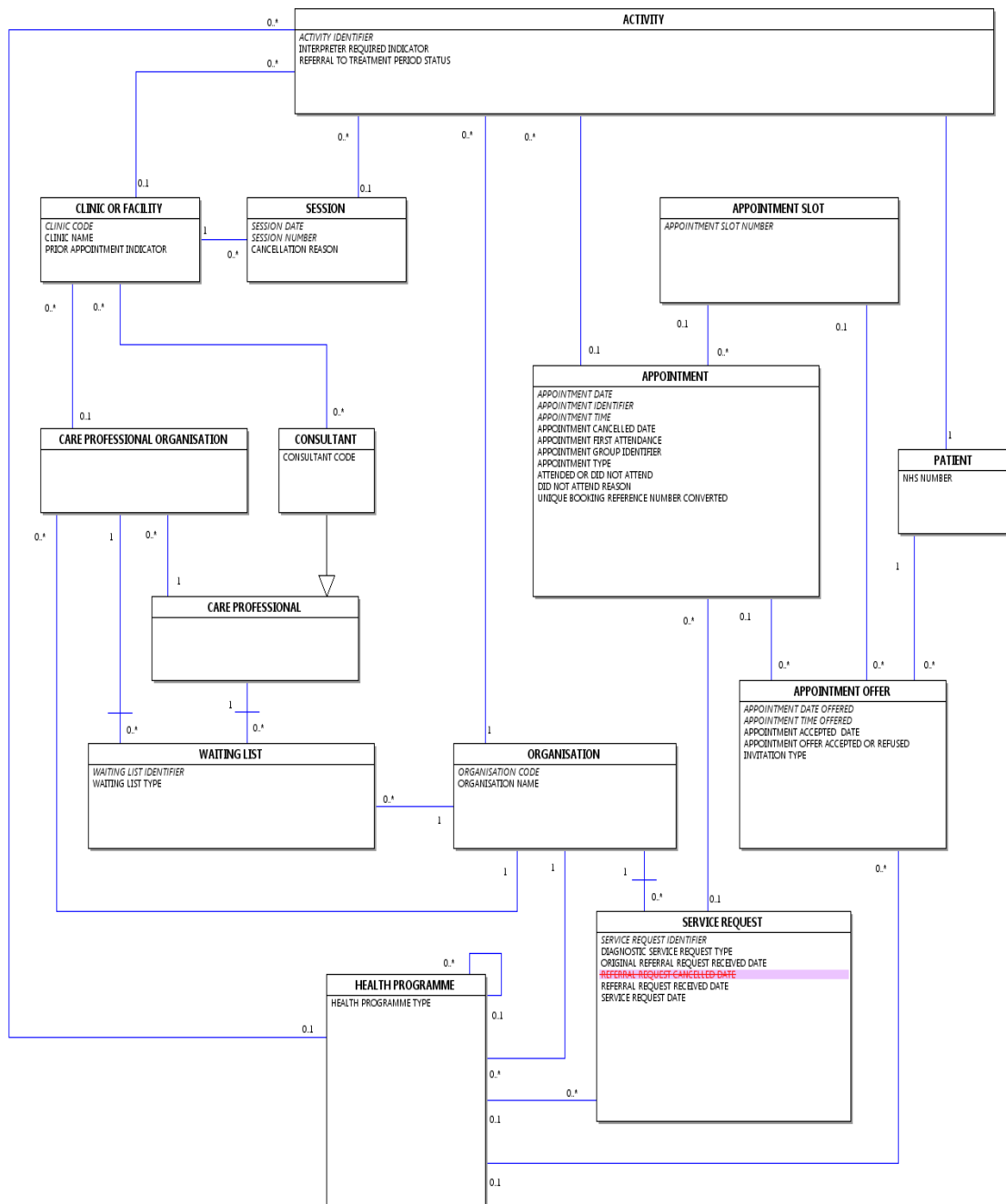
Date: 26 February 2014

Sponsor: Dr K. Lunn, Director of Information Standards Delivery. Health and Social Care Information Centre

Note: New text is shown with a blue background. Deleted text is crossed out. Retired text is shown in grey. Within the Diagrams deleted classes and relationships are red, changed items are blue and new items are green.

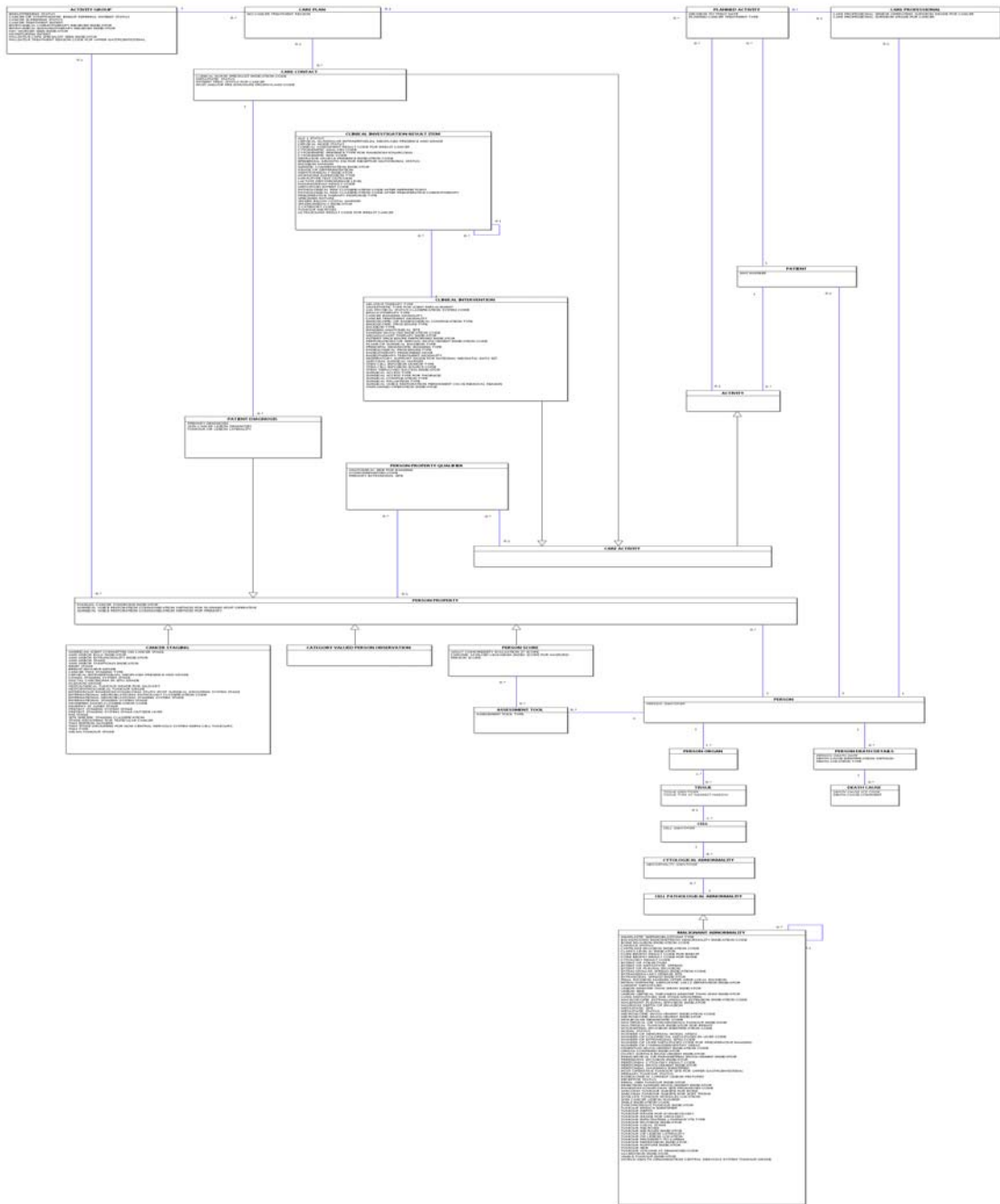
APPOINTMENTS DIAGRAM

Change to Diagram: Changed Diagram



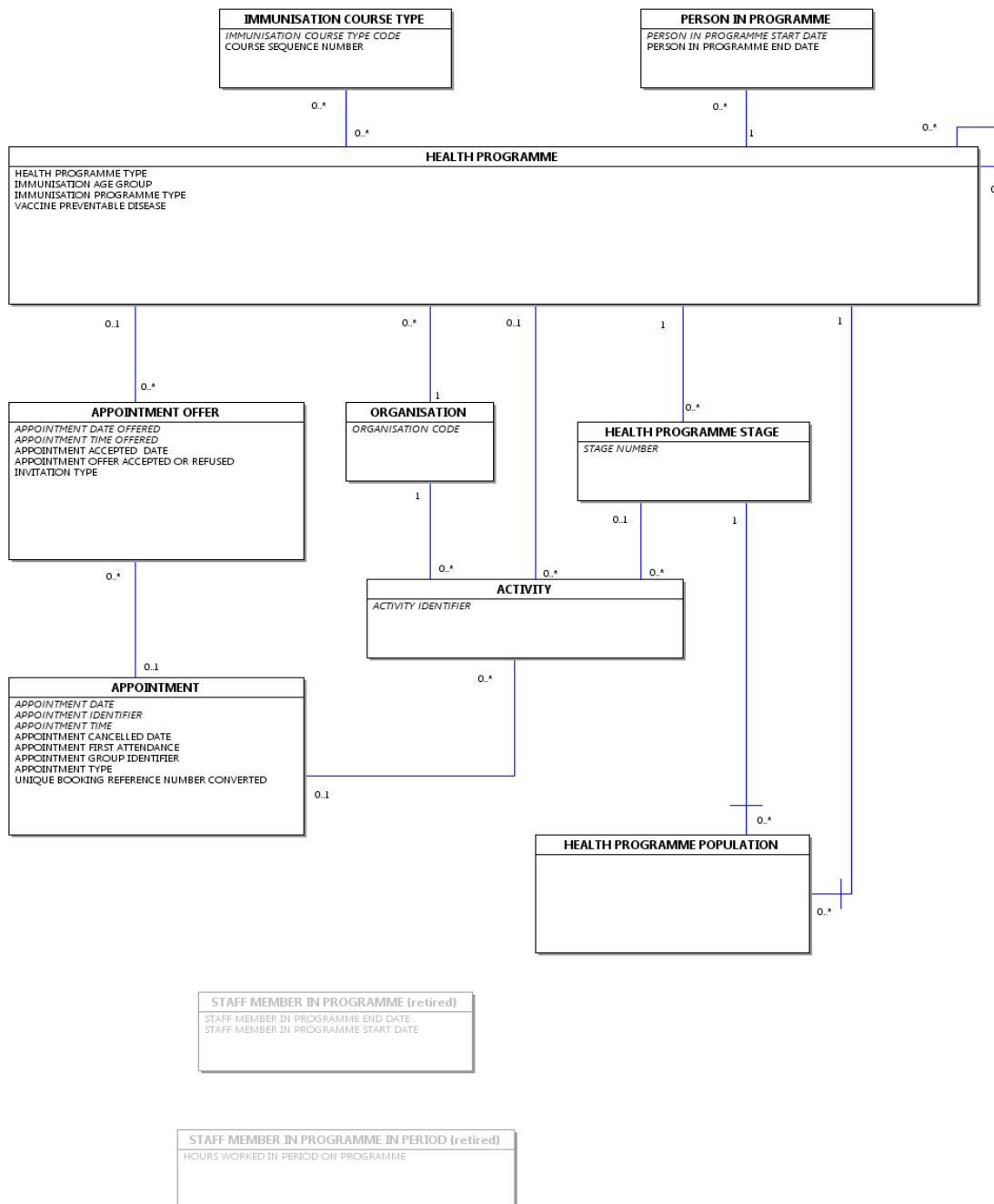
CANCER OUTCOMES AND SERVICES DIAGRAM

Change to Diagram: Changed Diagram



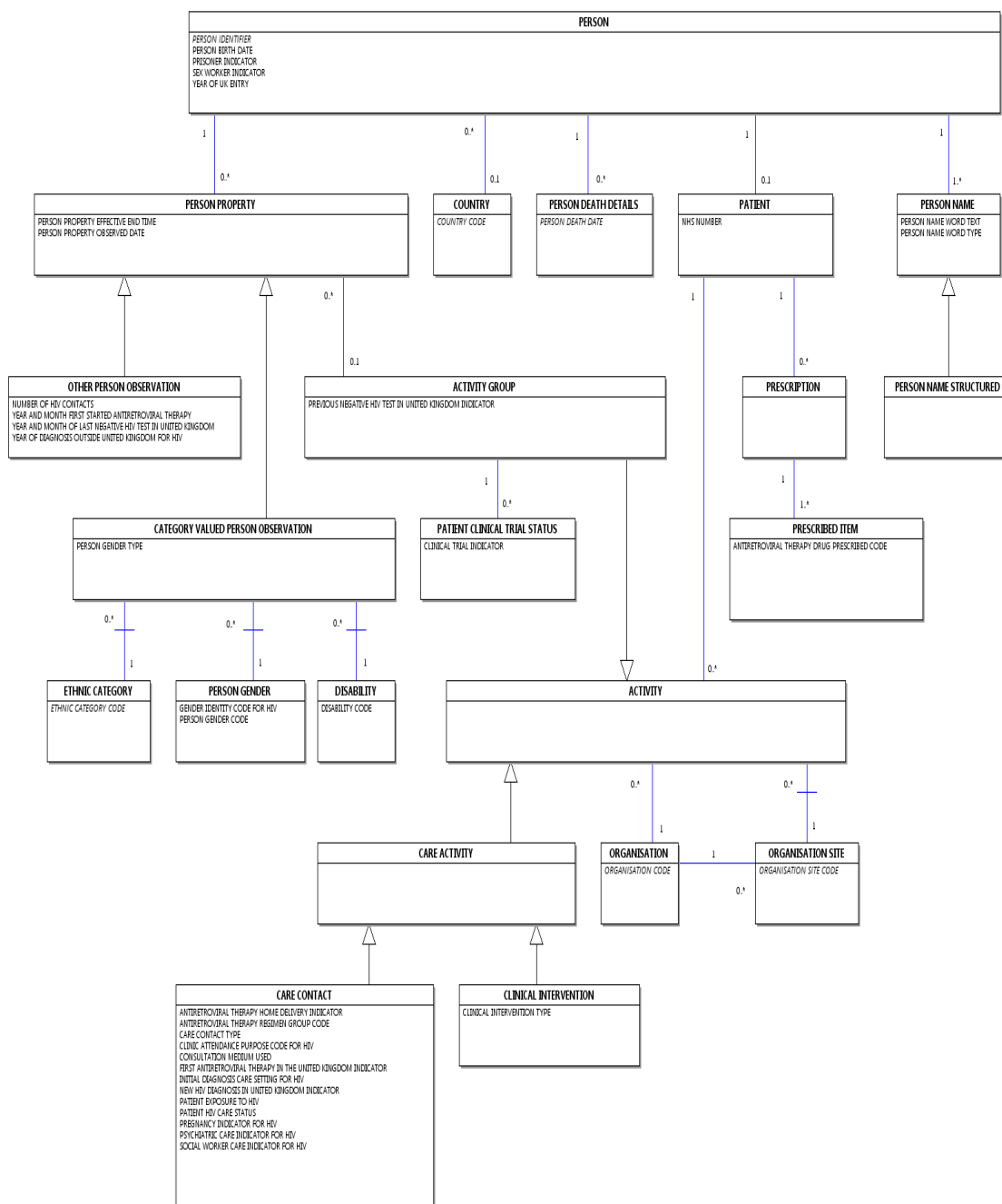
HEALTH PROGRAMME DIAGRAM

Change to Diagram: Changed Diagram



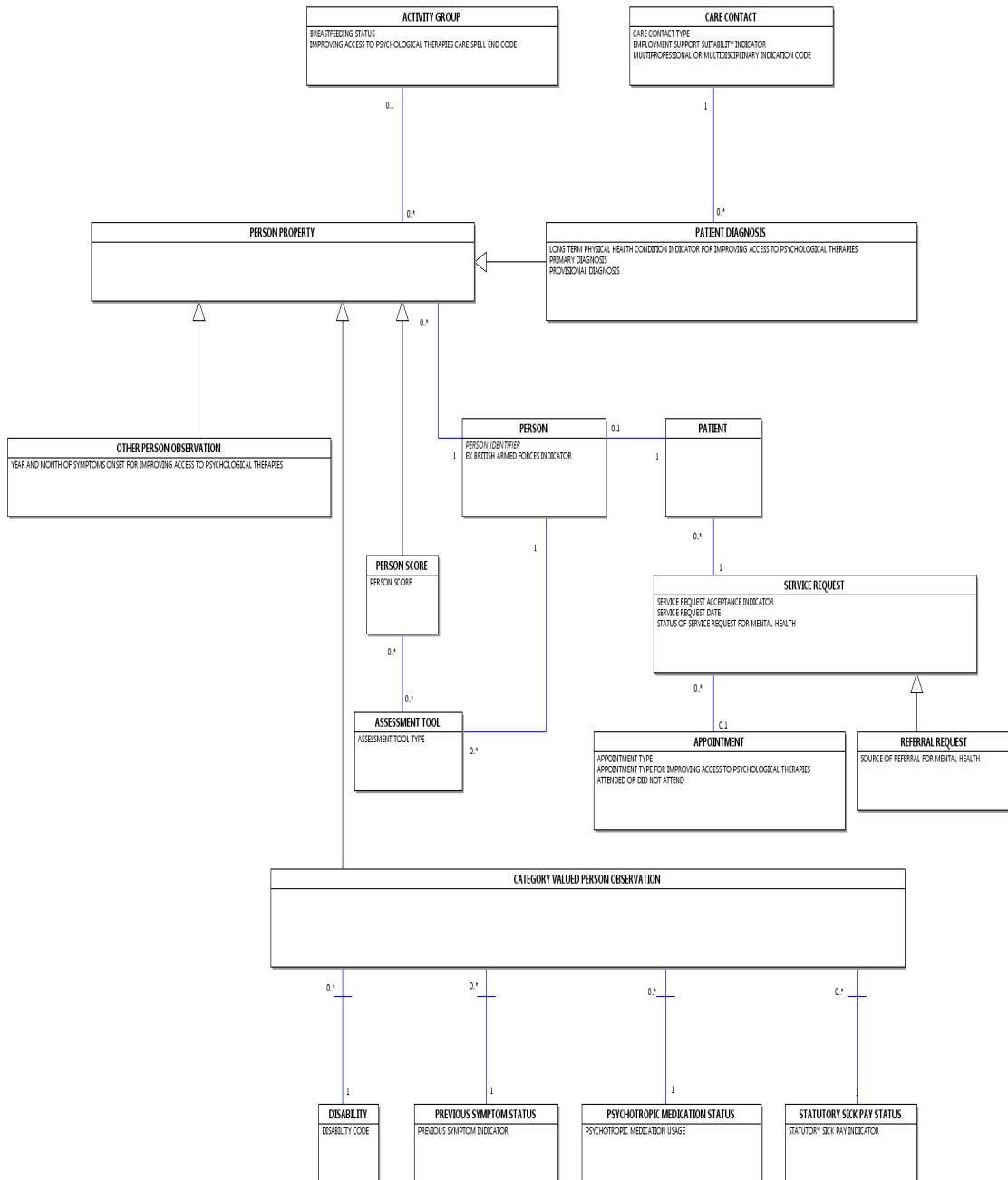
HIV AND AIDS DIAGRAM

Change to Diagram: Changed Diagram



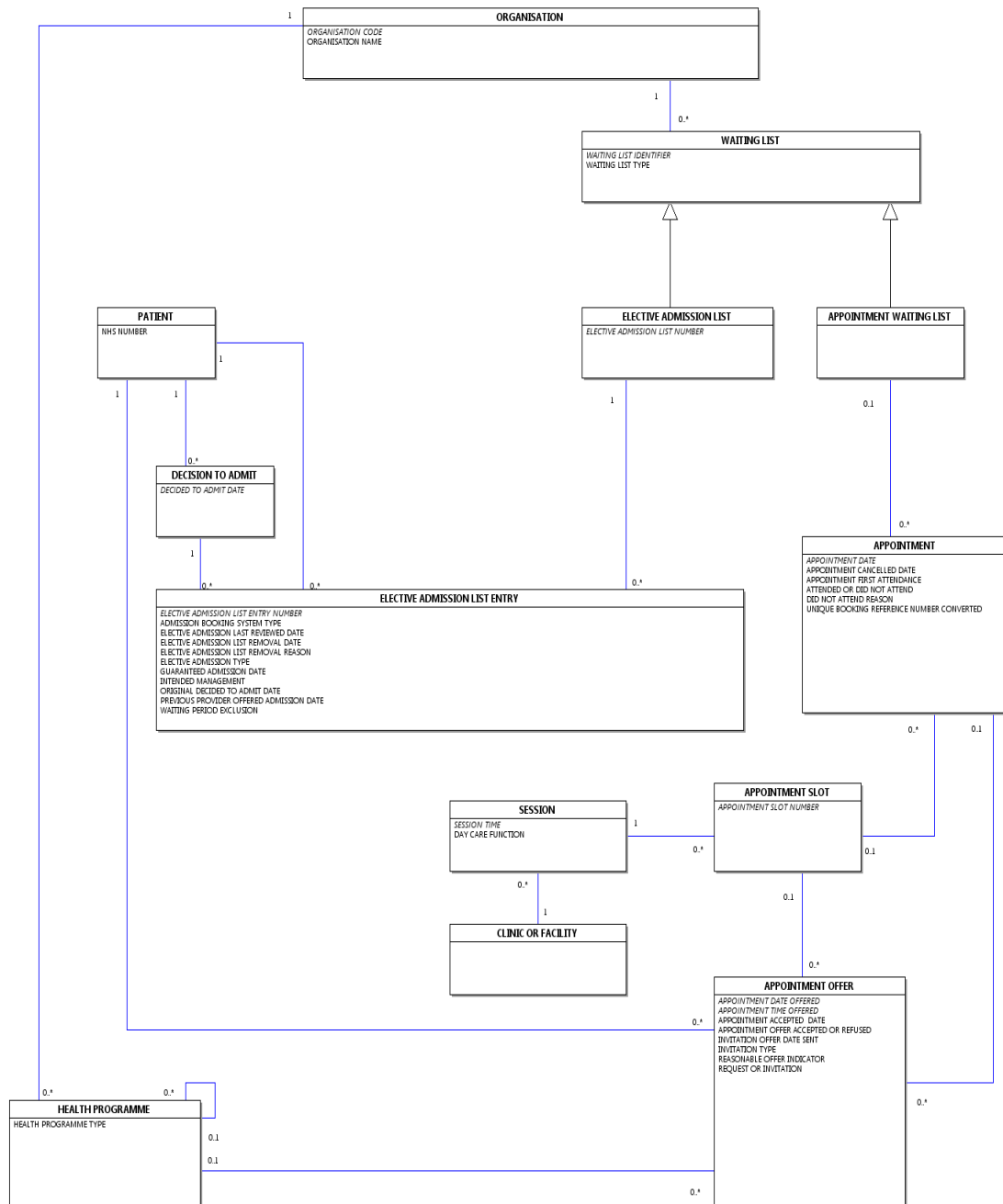
IMPROVING ACCESS TO PSYCHOLOGICAL THERAPIES DIAGRAM

Change to Diagram: Changed Diagram



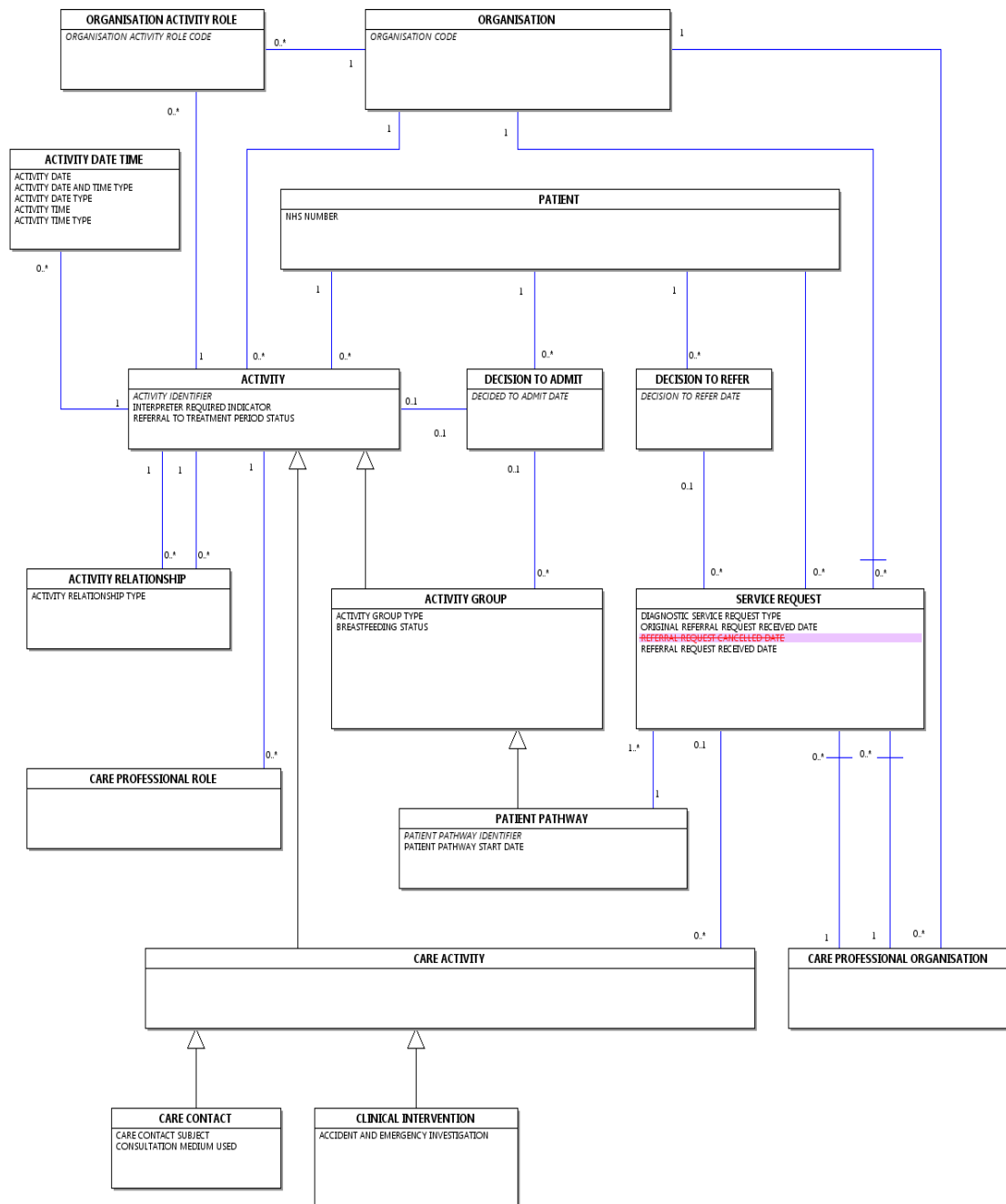
LISTS DIAGRAM

Change to Diagram: Changed Diagram



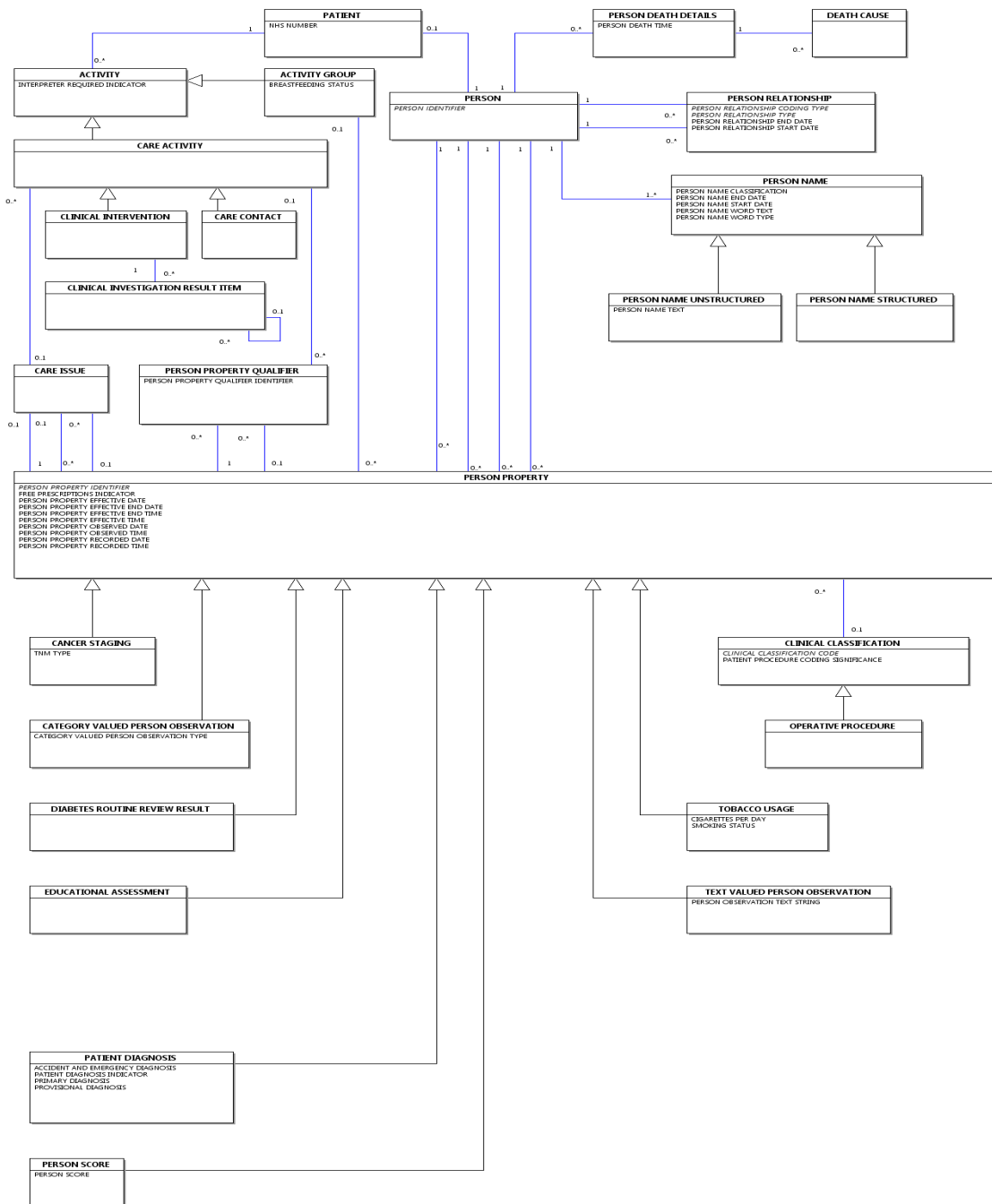
PATIENT PATHWAY DIAGRAM

Change to Diagram: Changed Diagram



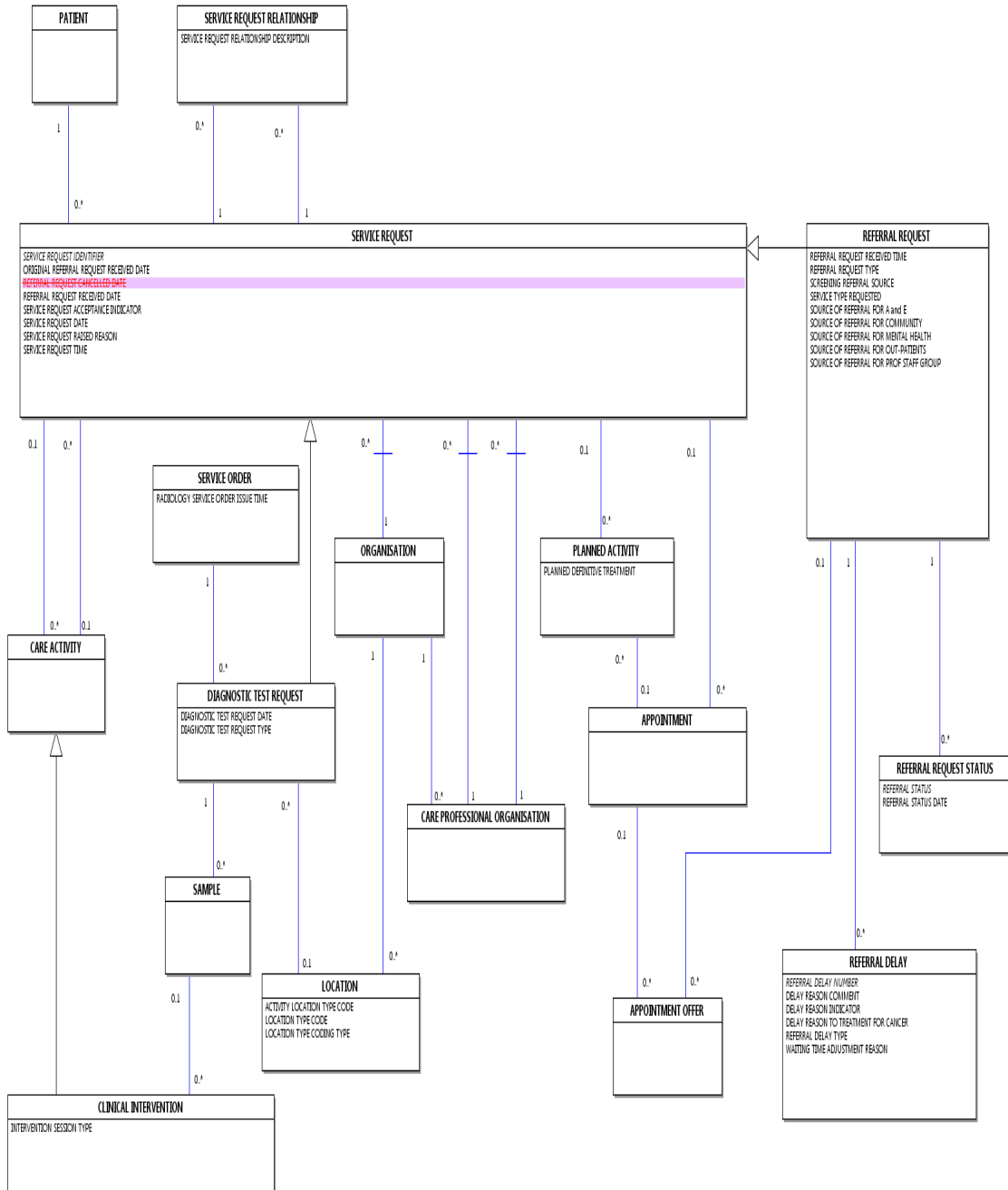
PERSON AND PERSON PROPERTY DIAGRAM

Change to Diagram: Changed Diagram



REFERRAL REQUEST DIAGRAM

Change to Diagram: Changed Diagram



CLINIC ATTENDANCE MIDWIFE

Change to Supporting Information: Changed Description

~~A Clinic Attendance Midwife is a CARE CONTACT. A Clinic Attendance Midwife is a Clinic Attendance Non-Consultant which is a CARE CONTACT.~~

~~A Clinic Attendance Midwife is a Clinic Attendance Non-Consultant.~~

A [Clinic Attendance Midwife](#) is an [APPOINTMENT](#) and/or attendance at a [Midwife Clinic](#) or an [APPOINTMENT](#) and/or contact with a [Midwife Clinic](#).

~~The total number of attendances or contacts in a period is required for central returns. Where both the mother and baby attend a [Postnatal](#) clinic together this counts as one attendance.~~

~~Where both mother and baby attend a [Postnatal](#) clinic together this is to count as one attendance.~~

~~Information recorded for a [Clinic Attendance Midwife](#) includes:~~

- ~~[ANTENATAL OR POSTNATAL INDICATOR](#)~~
- ~~[CONSULTATION MEDIUM USED](#)~~
- ~~[FIRST ATTENDANCE CODE](#)~~

CLINIC ATTENDANCE SEXUAL AND REPRODUCTIVE HEALTH SERVICE

Change to Supporting Information: Changed Description

~~A [Clinic Attendance Sexual and Reproductive Health Service](#) is a [CARE CONTACT](#). A [Clinic Attendance Sexual and Reproductive Health Service](#) is a [Clinic Attendance Non-Consultant](#) which is a [CARE CONTACT](#).~~

~~A [Clinic Attendance Sexual and Reproductive Health Service](#) is a [Clinic Attendance Non-Consultant](#). A [Clinic Attendance Sexual and Reproductive Health Service](#) is an attendance at, or contact by a [PATIENT](#) with a [Sexual and Reproductive Health Clinic](#).~~

~~A [Clinic Attendance Sexual and Reproductive Health Service](#) is an attendance or contact by a [PATIENT](#) at a [Sexual and Reproductive Health Clinic](#).~~

~~Information recorded for a [Clinic Attendance Sexual and Reproductive Health Service](#) includes:~~

- ~~[CONTRACEPTION METHOD MAIN](#) ⊖~~
- ~~[CONTRACEPTION METHOD POST-COITAL](#) ⊖~~
- ~~[CONTRACEPTIVE ADVICE GIVEN](#)~~
- ~~[First Contact In Financial Year](#)~~

CONSULTANT OUT-PATIENT EPISODE

Change to Supporting Information: Changed Description

A [Consultant Out-Patient Episode](#) is an [ACTIVITY GROUP](#).

A [Consultant Out-Patient Episode](#) is an episode of care for a particular [PATIENT](#) comprising a series of [Out-Patient Attendances Consultant](#), in respect of one referral, managed by the same [CONSULTANT](#) or, in the case of shared-care, by two or more [CONSULTANTS](#) equally participating in care. Where care is provided by two or more [CONSULTANTS](#) within the same episode, one [CONSULTANT](#) will take overriding responsibility for the [PATIENT](#) and only one [Consultant Out-Patient Episode](#) is recorded. Additional [CONSULTANTS](#) participating in the care of a [PATIENT](#) are defined as [Shared Care Out-Patient Consultants](#).

A [Consultant Out-Patient Episode](#) can overlap with other [Consultant Out-Patient Episodes](#) or [Consultant Episodes \(Hospital Provider\)](#) for a [PATIENT](#) using a [Hospital Bed](#).

A [Consultant Out-Patient Episode](#) starts on the date the [PATIENT](#) first sees or is in contact with the [CONSULTANT](#)

at an [Out-Patient Attendance Consultant](#). The episode ends when the [PATIENT](#) is not given a further [Out-Patient Appointment](#) by the [CONSULTANT](#) or the [PATIENT](#) has not attended or been contacted for six months with no forthcoming [APPOINTMENT](#). If after discharge the condition deteriorates and the [PATIENT](#) returns to a clinic run by the same [CONSULTANT](#), this is a new episode (referral).

During the [Consultant Out-Patient Episode](#) the [PATIENT](#) may be subject to more than one [ADMINISTRATIVE CATEGORY PERIOD](#).

Notes:

Do not count the following attendances or contacts as part of a [Consultant Out-Patient Episode](#):

- [Nurse Clinic APPOINTMENT](#) / attendance;
- face to face contacts with other health professionals;
- contact with community [NURSES](#);

If the treatment changes but the [CONSULTANT](#) stays the same, record it as the **same** [Consultant Out-Patient Episode](#); if the [CONSULTANT](#) changes but the treatment stays the same, record it as a **new** [Consultant Out-Patient Episode](#).

A [Consultant Out-Patient Episode](#) would not necessarily terminate because a [PATIENT](#) was admitted into hospital or placed on an [ELECTIVE ADMISSION LIST](#); if further [APPOINTMENTS](#) in respect of the same referral with the [CONSULTANT](#) are intended or expected, these would all be included in the same [Consultant Out-Patient Episode](#), with attendances after the end of a [Hospital Provider Spell](#) counting as follow-up attendances.

Note that a [PATIENT](#) can have a concurrent [Consultant Out-Patient Episode](#) and [Hospital Provider Spell](#). For example, a [PATIENT](#) in a long-stay [WARD](#) under the care of a psychiatrist might also be attending a general surgeon.

Information recorded for a [Consultant Out-Patient Episode](#) includes:

- [EPISODE NUMBER](#)
- [End Date](#) ⊖
- [FUNCTIONAL DEFICIENCY](#) ⊖
- [FUNCTIONAL DEFICIENCY CAUSE](#) ⊖
- [Start Date](#)

HEALTHY PERSON STAY_ renamed from HEALTHY PERSON STAY

Change to Supporting Information: Changed Name, Description

~~This is a record of all overnight stays by healthy [PERSONS](#) who use a [Hospital Bed](#). The [Hospital Bed](#) allocated to the healthy [PERSON](#) may be drawn from the [Hospital Bed](#) stock allocated to [PATIENTS](#), thus the [Hospital Bed](#) becomes unavailable, or from specially provided facilities. A [Healthy Person Stay](#) is an [ACTIVITY GROUP](#).~~

A [Healthy Person Stay](#) is a record of all overnight stays by healthy [PERSONS](#) who use a [Hospital Bed](#). The [Hospital Bed](#) allocated to the healthy [PERSON](#) may be drawn from the [Hospital Bed](#) stock allocated to [PATIENTS](#) (thus the [Hospital Bed](#) becomes unavailable), or from specially provided facilities.

HEALTHY PERSON STAY_ renamed from HEALTHY PERSON STAY

Change to Supporting Information: Changed Name, Description

- Changed Name from Data_Dictionary.Classes.H.HEALTHY_PERSON_STAY to Data_Dictionary.NHS_Business_Definitions.H.Healthy_Person_Stay
- Changed Description

PROFESSIONAL STAFF GROUP EPISODE

Change to Supporting Information: Changed Description

~~Professional Staff Group Episode is an ACTIVITY GROUP.~~ A Professional Staff Group Episode is an ACTIVITY GROUP.

~~The period in which a PATIENT has received treatment from a Professional Staff Group Service of a Health Care Provider.~~ A Professional Staff Group Episode is the period in which a PATIENT has received treatment from a Professional Staff Group Service of a Health Care Provider.

The episode will be made up of one or more [Professional Staff Group Contacts](#), and will start on the date of the initial contact.

~~For speech and language therapy services the duration of the episode should be recorded.~~

The episode of care is terminated by a formal discharge or by no [Professional Staff Group Contact](#) occurring for at least six months, in the absence of a planned review date.

For each episode a [MAIN SPECIALTY](#) may be recorded for the source of referral .

~~Information recorded for a Professional Staff Group Episode includes:~~

- ~~[FUNCTIONAL DEFICIENCY](#) ⊖~~
- ~~[FUNCTIONAL DEFICIENCY CAUSE](#) ⊖~~
- ~~[Review Planned Date](#) ⊖~~
- ~~[Start Date](#)~~

ACTIVITY GROUP

Change to Class: Changed Attributes

Attributes of this Class are:

- A and E INCIDENT LOCATION TYPE
- A and E PATIENT GROUP
- ACTIVITY GROUP TYPE
- ADMISSION METHOD
- BABY FIRST FEED BREAST MILK STATUS
- BREASTFEEDING STATUS
- CANCER OR SYMPTOMATIC BREAST REFERRAL PATIENT STATUS
- CANCER REFERRAL TO TREATMENT PERIOD START DATE
- CANCER SCREENING STATUS
- CANCER TREATMENT INTENT
- CANCER TREATMENT PERIOD START DATE
- CARE PROGRAMME APPROACH LEVEL
- CARER RESIDENT INDICATION CODE FOR NATIONAL NEONATAL DATA SET
- CHILDREN TEENAGERS AND YOUNG ADULTS AGE CATEGORY
- ~~DELIVERY FACILITIES ONLY USED~~
- DELIVERY PLACE CHANGE REASON
- DISCHARGE DESTINATION
- DISCHARGED TO HOSPITAL AT HOME SERVICE INDICATOR

DISCHARGE FROM MENTAL HEALTH SERVICE REASON
DISCHARGE METHOD
FIRST REGULAR DAY OR NIGHT ADMISSION
FULL POSTNATAL EXAMINATION DATE
IMPROVING ACCESS TO PSYCHOLOGICAL THERAPIES CARE SPELL END CODE
INCIDENT TYPE
INTRAVESICAL CHEMOTHERAPY RECEIVED INDICATOR
INTRAVESICAL IMMUNOTHERAPY RECEIVED INDICATOR
KEY WORKER SEEN INDICATOR
LENGTH OF STAY ADJUSTMENT
LENGTH OF STAY ADJUSTMENT REASON
MONITORING INTENT
NON SMOKING CONFIRMATION STATUS AT 4 WEEKS
OUTCOME AT 4 WEEK FOLLOW-UP
PAEDIATRIC NEPHROLOGY REGISTRY STATUS CODE
PALLIATIVE CARE SPECIALIST SEEN INDICATOR
PALLIATIVE TREATMENT REASON CODE FOR UPPER GASTROINTESTINAL
PATIENT RECEIVING ONE TO ONE NURSING CARE INDICATOR
PHARMACOTHERAPY STOP SMOKING AID RECEIVED
PREGNANCY OUTCOME CODE
PREGNANCY TOTAL PREVIOUS LOSSES LESS THAN 24 WEEKS
PREVIOUS NEGATIVE HIV TEST IN UNITED KINGDOM INDICATOR
RADIOTHERAPY INTENT
RENAL DIALYSIS SCHEDULE TYPE
SMOKING QUIT DATE
SOURCE OF ADMISSION
SUPERVISED COMMUNITY TREATMENT END REASON
TREATMENT START DATE FOR CANCER

CARE CONTACT

Change to Class: Changed Attributes

Attributes of this Class are:

A and E ATTENDANCE CATEGORY
A and E INITIAL ASSESSMENT TRIAGE CATEGORY
A and E STREAM
ACCIDENT AND EMERGENCY ARRIVAL MODE
ACCIDENT AND EMERGENCY ATTENDANCE DISPOSAL
ACUTE HOME-BASED TELEPHONE CONTACT
~~ANTENATAL OR POSTNATAL INDICATOR~~
ANTIRETROVIRAL THERAPY HOME DELIVERY INDICATOR
ANTIRETROVIRAL THERAPY REGIMEN GROUP CODE
BRIEF INTERVENTION PROVIDED INDICATOR
BRIEF INTERVENTION TYPE FOR NHS HEALTH CHECK
CARE CONTACT SERVICE TYPE FOR CHILDREN AND YOUNG PEOPLES HEALTH SERVICE
SECONDARY USES
CARE CONTACT SUBJECT
CARE CONTACT TYPE
CARE CONTACT TYPE FOR CHILDREN AND YOUNG PEOPLES HEALTH SERVICE SECONDARY USES
CHILD DIFFICULT TO TEST REASON
CLINICAL NURSE SPECIALIST INDICATION CODE
CLINIC ATTENDANCE PURPOSE CODE FOR HIV
COLPOSCOPY PRIME PROCEDURE TYPE

CONSULTATION MEDIUM USED
~~CONTRACEPTIVE ADVICE GIVEN~~
CONTRACEPTIVE SERVICE TYPE
DECISION TO UNDERTAKE FURTHER ASSESSMENT INDICATOR
DIETARY ADVICE REASON CODE
EMPLOYMENT SUPPORT SUITABILITY INDICATOR
FIRST ANTIRETROVIRAL THERAPY IN THE UNITED KINGDOM INDICATOR
FIRST ATTENDANCE
FURTHER ASSESSMENT TYPE FOR NHS HEALTH CHECK
INFORMATION AND ADVICE PROVIDED INDICATOR
INFORMATION AND ADVICE TYPE PROVIDED FOR NHS HEALTH CHECK
INITIAL CONTACT
INITIAL DIAGNOSIS CARE SETTING FOR HIV
IUD APPLICATION DATE
MATERNITY VISIT CALL REASON
MEDICAL STAFF TYPE SEEING PATIENT
METASTATIC STATUS
MULTIPROFESSIONAL OR MULTIDISCIPLINARY INDICATION CODE
NEW HIV DIAGNOSIS IN UNITED KINGDOM INDICATOR
OUTCOME OF ATTENDANCE
OUTCOME OF ATTENDANCE FOR CHILDREN AND YOUNG PEOPLES HEALTH SERVICE SECONDARY USES
PATIENT EXPOSURE TO HIV
PATIENT HIV CARE STATUS
PATIENT INFORMED OF OUTCOME DATE
PATIENT TRIAL STATUS FOR CANCER
PAYMENT FROM PATIENT RECEIVED
POST AND/OR PRE EXPOSURE PROPHYLAXIS CODE
POSTNATAL CARE INDICATOR
PREGNANCY INDICATOR FOR HIV
PSYCHIATRIC CARE INDICATOR FOR HIV
SETTLED ACCOMMODATION INDICATOR
SIGNPOSTING TO SERVICE INDICATOR
SIGNPOSTING TO SERVICE TYPE FOR NHS HEALTH CHECK
SKIN TO SKIN CONTACT INDICATOR
SOCIAL WORKER CARE INDICATOR FOR HIV
STATUTORY ASSESSMENT TYPE
SUBJECTIVE GLOBAL ASSESSMENT
THERAPY TYPE FOR IMPROVING ACCESS TO PSYCHOLOGICAL THERAPIES
TWO YEAR NEONATAL OUTCOMES ASSESSMENT NOT CARRIED OUT REASON

CLINIC OR FACILITY

Change to Class: Changed Relationships

Each CLINIC OR FACILITY

must be a type of one and only one SERVICE
may be resultant in one or more ACTIVITY
may be the responsibility of one and only one CARE PROFESSIONAL ORGANISATION
may be conducted by one or more CONSULTANT
~~may be the subject of one or more DAY CARE OPERATIONAL PLAN~~
may be related to one or more PATIENT CLINIC
may be provided during one or more SESSION

DAY CARE OPERATIONAL PLAN (RETIRED)_ renamed from DAY CARE OPERATIONAL PLAN

Change to Class: Changed Attributes, status to Retired, Name, Description

~~The operational planning intent for a Facility.~~ **This item has been retired from the NHS Data Model and Dictionary.**

The last live version of this item is available in the February 2014 release of the NHS Data Model and Dictionary.

Access to this version can be obtained by emailing information.standards@hscic.gov.uk with "NHS Data Model and Dictionary - Archive Request" in the email subject line.

DAY CARE OPERATIONAL PLAN (RETIRED)_ renamed from DAY CARE OPERATIONAL PLAN

Change to Class: Changed Attributes, status to Retired, Name, Description

Attributes of this Class are:

~~⌘ DAY CARE OPERATIONAL PLAN START DATE
DAY CARE OPERATIONAL PLAN END DATE
NUMBER OF PLACE DAYS INTENDED AVAILABLE~~

This class has no attributes.

DAY CARE OPERATIONAL PLAN (RETIRED)_ renamed from DAY CARE OPERATIONAL PLAN

Change to Class: Changed Attributes, status to Retired, Name, Description

- Changed Attributes
 - Retired DAY CARE OPERATIONAL PLAN
 - Changed Name from Data_Dictionary.Classes.D.DAY_CARE_OPERATIONAL_PLAN to Retired.Data_Dictionary.Classes.D.DAY_CARE_OPERATIONAL_PLAN
 - Changed Description
-

EDUCATIONAL ASSESSMENT

Change to Class: Changed Attributes

Attributes of this Class are:

~~EDUCATIONAL ASSESSMENT OUTCOME FOR CHILDREN AND YOUNG PEOPLES HEALTH SERVICE
SECONDARY USES
EDUCATIONAL ASSESSMENT RESULT~~

FUNCTIONAL DEFICIENCY (RETIRED)_ renamed from FUNCTIONAL DEFICIENCY

Change to Class: Changed Supertype, Attributes, status to Retired, Name, Description

~~A subtype of [PERSON PROPERTY](#).~~ **This item has been retired from the NHS Data Model and Dictionary.**

~~The [PATIENT](#) will be referred to a [CONSULTANT](#) in Rehabilitation Medicine or to a Professional Staff Group Service (i.e., to a therapist) in order to have a particular function, e.g. mobility, restored. [FUNCTIONAL](#)~~

~~DEFICIENCY TYPE~~ classifies the function to be restored, by reference to the affected part of the body, which is the subject of the particular referral. **The last live version of this item is available in the February 2014 release of the NHS Data Model and Dictionary.**

Access to this version can be obtained by emailing information.standards@hscic.gov.uk with "NHS Data Model and Dictionary - Archive Request" in the email subject line.

FUNCTIONAL DEFICIENCY (RETIRED)_ renamed from FUNCTIONAL DEFICIENCY

Change to Class: Changed Supertype, Attributes, status to Retired, Name, Description

Attributes of this Class are:

✦ ~~FUNCTIONAL DEFICIENCY TYPE~~
~~FUNCTIONAL DEFICIENCY CAUSE~~

This class has no attributes.

FUNCTIONAL DEFICIENCY (RETIRED)_ renamed from FUNCTIONAL DEFICIENCY

Change to Class: Changed Supertype, Attributes, status to Retired, Name, Description

- Changed Supertype from Data_Dictionary.Classes.P.PERSON_PROPERTY to null
- Changed Attributes
- Retired FUNCTIONAL DEFICIENCY
- Changed Name from Data_Dictionary.Classes.F.FUNCTIONAL_DEFICIENCY to Retired.Data_Dictionary.Classes.F.FUNCTIONAL_DEFICIENCY
- Changed Description

HEALTH PROGRAMME

Change to Class: Changed Attributes

Attributes of this Class are:

BREAST SCREENING AGE GROUP FOR KC62 PARTS 1 TO 3
BREAST SCREENING AGE GROUP FOR KC62 PARTS 4 TO 5
BREAST SCREENING AGE GROUP FOR KC63
BREAST SCREENING READING TYPE
CERVICAL SCREENING RECALL INTERVAL
COMMUNITY NURSE STAFF GROUP
HEALTH PROGRAMME TYPE
IMMUNISATION AGE GROUP
IMMUNISATION PROGRAMME TYPE
SCREENING CONDITION OR DISEASE
~~SURVEILLANCE PROGRAMME GROUP~~
VACCINE PREVENTABLE DISEASE

PLANNED SERVICE

Change to Class: Changed Attributes

Attributes of this Class are:

K PLANNED SERVICE START DATE
~~ACCIDENT AND EMERGENCY STAFF TYPE~~
NUMBER OF PLACE DAYS INTENDED AVAILABLE

PLANNED SERVICE END DATE

REFERRAL REQUEST

Change to Class: Changed Attributes

Attributes of this Class are:

BENIGN THERAPEUTIC OPERATION INDICATOR
COLPOSCOPY REFERRAL INDICATION
COMMISSIONER REFERENCE NUMBER
~~OTHER REFERRER CODE~~
OUT-PATIENT CLINIC REFERRING INDICATOR
REASON FOR REFERRAL TO COMMUNITY CARE
REFERRAL CLOSURE REASON FOR COMMUNITY CARE
REFERRAL REQUEST ACCEPTANCE INDICATOR
REFERRAL REQUEST RECEIVED TIME
REFERRAL REQUEST SERVICE TYPE FOR NHS HEALTH CHECK
REFERRAL REQUEST TYPE
SCREENING REFERRAL SOURCE
SERVICE TYPE REQUESTED
SERVICE TYPE REQUESTED FOR CHILD AND ADOLESCENT MENTAL HEALTH
SOURCE OF REFERRAL FOR A and E
SOURCE OF REFERRAL FOR COMMUNITY
SOURCE OF REFERRAL FOR MENTAL HEALTH
SOURCE OF REFERRAL FOR OUT-PATIENTS
SOURCE OF REFERRAL FOR PROF STAFF GROUP
TWO WEEK WAIT CANCER OR SYMPTOMATIC BREAST REFERRAL TYPE
TWO WEEK WAIT EXCLUSION INDICATOR

SERVICE REQUEST

Change to Class: Changed Attributes

Attributes of this Class are:

K SERVICE REQUEST IDENTIFIER
CLINICAL RESPONSE PRIORITY TYPE
DIAGNOSTIC SERVICE REQUEST TYPE
DIRECT ACCESS REFERRAL INDICATOR
ORIGINAL REFERRAL REQUEST RECEIVED DATE
~~REFERRAL REQUEST CANCELLED DATE~~
REFERRAL REQUEST RECEIVED DATE
SERVICE REQUEST ACCEPTANCE INDICATOR
SERVICE REQUEST DATE
SERVICE REQUEST RAISED REASON
SERVICE REQUEST TIME
STATUS OF SERVICE REQUEST FOR MENTAL HEALTH

WARD OPERATIONAL PLAN

Change to Class: Changed Attributes

Attributes of this Class are:

K WARD OPERATIONAL PLAN START DATE
AGE GROUP INTENDED

AUGMENTED CARE LOCATION CODE
CLINICAL CARE INTENSITY
IC OR HD BEDS INDICATOR
PLANNED WARD LISTING TIME
SEX OF PATIENTS
WARD AVAILABLE BED
WARD DAY NIGHT INDICATOR
WARD DAY PERIOD AVAILABILITY
WARD NIGHT PERIOD AVAILABILITY
WARD OPERATIONAL PLAN END DATE
WARD PLAN TOTAL BED CONSULTANT CARE
~~WARD PLAN TOTAL BED MIDWIFE ACCESS~~
WARD PLAN TOTAL BED NURSING CARE

ACCIDENT AND EMERGENCY STAFF TYPE (RETIRED)_ renamed from ACCIDENT AND EMERGENCY STAFF TYPE

Change to Attribute: Changed status to Retired, Name, Description

~~An indication of whether or not medical staff perform [ACTIVITIES](#) on site at an [Accident and Emergency Department](#). This item has been retired from the NHS Data Model and Dictionary.~~

~~**Classification:** The last live version of this item is available in the February 2014 release of the NHS Data Model and Dictionary.~~

- ~~a. Medical staff only on site~~
- ~~b. Cover provided other than by medical staff~~

~~Access to this version can be obtained by emailing information.standards@hscic.gov.uk with "NHS Data Model and Dictionary - Archive Request" in the email subject line.~~

ACCIDENT AND EMERGENCY STAFF TYPE (RETIRED)_ renamed from ACCIDENT AND EMERGENCY STAFF TYPE

Change to Attribute: Changed status to Retired, Name, Description

- Retired ACCIDENT AND EMERGENCY STAFF TYPE
- Changed Name from Data_Dictionary.Attributes.A.Acc.ACCIDENT_AND_EMERGENCY_STAFF_TYPE to Retired.Data_Dictionary.Attributes.A.ACCIDENT_AND_EMERGENCY_STAFF_TYPE
- Changed Description

ACTIVITY GROUP TYPE

Change to Attribute: Changed Description

The type of [ACTIVITY GROUP](#).

National Codes:

- 01 [Accident and Emergency Episode](#)
- 02 Acute Myocardial Infarction Care Spell (Retired July 2012)
- 03 Augmented Care Period (Retired 1 April 2006)
- 04 [Breast Cancer Care Spell](#)

05 [Cancer Care Spell](#)
06 [Care Home Stay \(Consultant Care\)](#)
07 [Care Home Stay \(Midwife Care\)](#)
08 [Care Home Stay \(Nursing Care\)](#)
09 [Care Home Stay \(Residential\)](#)
10 [Care Programme Approach Episode](#)
11 [Colorectal Cancer Care Spell](#)
12 [Community Episode](#)
13 [Mental Health Care Professional Episode \(Acute Home-Based\)](#)
14 [Consultant Episode \(Hospital Provider\)](#)
15 [Consultant Out-Patient Episode](#)
16 Dental Episode (Retired 01 April 2014)
17 [Drug Misuse Episode](#)
18 [Sexual Health And HIV Episode](#)
19 [Head and Neck Cancer Care Spell](#)
20 [Home Dialysis Episode](#)
21 [Hospital Provider Spell](#)
22 [Lung Cancer Care Spell](#)
23 [Adult Mental Health Care Spell](#)
24 [Midwife Episode](#)
25 [Neonatal Level Of Care Period](#)
26 [Nursing Episode](#)
27 [Palliative Care Episode](#)
28 [Person Stop Smoking Episode](#)
29 [Pregnancy Episode](#)
30 [Professional Staff Group Episode](#)
31 [Regular Attender Episode](#)
32 Road Traffic Accident Treatment (Retired 01 April 2014)
33 [Sarcoma Care Spell](#)
34 [Skin Cancer Care Spell](#)
35 Supervised Discharge Episode (Retired 01 April 2014)
36 Supervision Register Episode (Retired 01 April 2014)
37 [Upper Gastrointestinal Cancer Care Spell](#)
38 [Urological Cancer Care Spell](#)
39 [Ward Stay](#)
40 [Hospital Stay](#)
41 [Care Spell](#)
42 [CRITICAL CARE PERIOD](#)
43 [PATIENT PATHWAY](#)
44 [REFERRAL TO TREATMENT PERIOD](#)
45 [Active Monitoring](#)
46 [Supervised Community Treatment Recall](#)
47 [Supervised Community Treatment](#)
48 [Mental Health Care Without Patient Consent](#)
49 [Cancer Treatment Period](#)
50 [Gynaecological Cancer Care Spell](#)
51 [Mental Health Care Spell](#)
52 [Improving Access to Psychological Therapies Care Spell](#)
53 [Adult Mental Health Care Team Episode](#)
54 [Mental Health NHS Day Care Episode](#)
55 [Mental Health Delayed Discharge Period](#)
56 [Mental Health Care Cluster Assignment Period](#)
57 [Mental Health Care Coordinator Assignment](#)
58 [Child and Adolescent Mental Health Clinical Intervention Episode](#)
59 [Child and Adolescent Mental Health Care Spell](#)
60 [Maternity Episode](#)
61 [HIV Episode](#)

- 63 [Central Nervous System Cancer Care Spell](#)
- 63 [Children Teenagers and Young Adults Cancer Care Spell](#)
- 64 [Haematology Cancer Care Spell](#)
- 65 [Lung Cancer Care Spell](#)
- 66 [Commissioner Assignment Period](#)
- 67 [Breast Screening Episode](#)
- 68 [High Risk Breast Screening Episode](#)
- 69 [Open Breast Screening Episode](#)
- 70 [Neonatal Critical Care Spell](#)
- 71 [Radiotherapy Episode](#)
- 72 [Healthy Person Stay](#)

Note:

The list is not in alphabetical order.

ANTENATAL OR POSTNATAL INDICATOR (RETIRED)_ renamed from ANTENATAL OR POSTNATAL INDICATOR

Change to Attribute: Changed status to Retired, Name, Description

An indication of whether an [APPOINTMENT](#) and/or attendance at a [Midwife Clinic](#) is for [Antenatal](#) or [Postnatal](#) care. **This item has been retired from the NHS Data Model and Dictionary.**

National Codes: The last live version of this item is available in the February 2014 release of the NHS Data Model and Dictionary.

- + [Antenatal](#)
- ± [Postnatal](#)

Access to this version can be obtained by emailing information.standards@hscic.gov.uk with "NHS Data Model and Dictionary - Archive Request" in the email subject line.

ANTENATAL OR POSTNATAL INDICATOR (RETIRED)_ renamed from ANTENATAL OR POSTNATAL INDICATOR

Change to Attribute: Changed status to Retired, Name, Description

- Retired ANTENATAL OR POSTNATAL INDICATOR
- Changed Name from Data_Dictionary.Attributes.A.Ana.ANTENATAL_OR_POSTNATAL_INDICATOR to Retired.Data_Dictionary.Attributes.A.ANTENATAL_OR_POSTNATAL_INDICATOR
- Changed Description

CONTRACEPTIVE ADVICE GIVEN (RETIRED)_ renamed from CONTRACEPTIVE ADVICE GIVEN

Change to Attribute: Changed status to Retired, Name, Description

Indicates whether a [Sexual and Reproductive Health Domiciliary Visit](#) or an attendance at a [Sexual and Reproductive Health Clinic](#) resulted in [CONTRACEPTION](#) or contraceptive advice being given. **This item has been retired from the NHS Data Model and Dictionary.**

Classification: The last live version of this item is available in the February 2014 release of the NHS

Data Model and Dictionary.

- a: Contraception or contraceptive advice given
- b: No contraception and/or contraceptive advice sought or given

Access to this version can be obtained by emailing information.standards@hscic.gov.uk with "NHS Data Model and Dictionary - Archive Request" in the email subject line.

CONTRACEPTIVE ADVICE GIVEN (RETIRED)_ renamed from CONTRACEPTIVE ADVICE GIVEN

Change to Attribute: Changed status to Retired, Name, Description

- Retired CONTRACEPTIVE ADVICE GIVEN
- Changed Name from Data_Dictionary.Attributes.C.Cons.CONTRACEPTIVE_ADVICE_GIVEN to Retired.Data_Dictionary.Attributes.C.CONTRACEPTIVE_ADVICE_GIVEN
- Changed Description

DAY CARE OPERATIONAL PLAN END DATE (RETIRED)_ renamed from DAY CARE OPERATIONAL PLAN END DATE

Change to Attribute: Changed status to Retired, Name, Description

The date on which a [DAY CARE OPERATIONAL PLAN](#) finishes. This item has been retired from the NHS Data Model and Dictionary.

The last live version of this item is available in the February 2014 release of the NHS Data Model and Dictionary.

Access to this version can be obtained by emailing information.standards@hscic.gov.uk with "NHS Data Model and Dictionary - Archive Request" in the email subject line.

DAY CARE OPERATIONAL PLAN END DATE (RETIRED)_ renamed from DAY CARE OPERATIONAL PLAN END DATE

Change to Attribute: Changed status to Retired, Name, Description

- Retired DAY CARE OPERATIONAL PLAN END DATE
- Changed Name from Data_Dictionary.Attributes.D.DAY_CARE_OPERATIONAL_PLAN_END_DATE to Retired.Data_Dictionary.Attributes.D.DAY_CARE_OPERATIONAL_PLAN_END_DATE
- Changed Description

DAY CARE OPERATIONAL PLAN START DATE (RETIRED)_ renamed from DAY CARE OPERATIONAL PLAN START DATE

Change to Attribute: Changed status to Retired, Name, Description

The date on which a [DAY CARE OPERATIONAL PLAN](#) begins. This item has been retired from the NHS Data Model and Dictionary.

The last live version of this item is available in the February 2014 release of the NHS Data Model and Dictionary.

Access to this version can be obtained by emailing information.standards@hscic.gov.uk with "NHS Data Model and Dictionary - Archive Request" in the email subject line.

DAY CARE OPERATIONAL PLAN START DATE (RETIRED)_ renamed from DAY CARE OPERATIONAL PLAN START DATE

Change to Attribute: Changed status to Retired, Name, Description

- Retired DAY CARE OPERATIONAL PLAN START DATE
- Changed Name from Data_Dictionary.Attributes.D.DAY_CARE_OPERATIONAL_PLAN_START_DATE to Retired.Data_Dictionary.Attributes.D.DAY_CARE_OPERATIONAL_PLAN_START_DATE
- Changed Description

DELIVERY FACILITIES ONLY USED (RETIRED)_ renamed from DELIVERY FACILITIES ONLY USED

Change to Attribute: Changed status to Retired, Name, Description

~~An indication of whether delivery facilities only were used during a [Ward Stay](#) for a maternity [PATIENT](#).~~ **This item has been retired from the NHS Data Model and Dictionary.**

Classification: **The last live version of this item is available in the February 2014 release of the NHS Data Model and Dictionary.**

- a. Yes
- b. No

Access to this version can be obtained by emailing information.standards@hscic.gov.uk with "NHS Data Model and Dictionary - Archive Request" in the email subject line.

DELIVERY FACILITIES ONLY USED (RETIRED)_ renamed from DELIVERY FACILITIES ONLY USED

Change to Attribute: Changed status to Retired, Name, Description

- Retired DELIVERY FACILITIES ONLY USED
- Changed Name from Data_Dictionary.Attributes.D.Dec.DELIVERY_FACILITIES_ONLY_USED to Retired.Data_Dictionary.Attributes.D.DELIVERY_FACILITIES_ONLY_USED
- Changed Description

EDUCATIONAL ASSESSMENT RESULT (RETIRED)_ renamed from EDUCATIONAL ASSESSMENT RESULT

Change to Attribute: Changed status to Retired, Name, Description

~~The result of an [EDUCATIONAL ASSESSMENT](#).~~ **This item has been retired from the NHS Data Model and Dictionary.**

Classification: **The last live version of this item is available in the February 2014 release of the NHS Data Model and Dictionary.**

- a. ~~Statement of special educational needs made by the education authority including a requirement for health services~~
- b. ~~Statement not made but support required from health services~~
- c. ~~Statement made but no support required from health services~~
- d. ~~Statement not made and no support required from health services~~

Access to this version can be obtained by emailing information.standards@hscic.gov.uk with "NHS Data Model and Dictionary - Archive Request" in the email subject line.

EDUCATIONAL ASSESSMENT RESULT (RETIRED) renamed from EDUCATIONAL ASSESSMENT RESULT

Change to Attribute: Changed status to Retired, Name, Description

- Retired EDUCATIONAL ASSESSMENT RESULT
- Changed Name from Data_Dictionary.Attributes.E.EDUCATIONAL_ASSESSMENT_RESULT to Retired.Data_Dictionary.Attributes.E.EDUCATIONAL_ASSESSMENT_RESULT
- Changed Description

FUNCTIONAL DEFICIENCY CAUSE (RETIRED) renamed from FUNCTIONAL DEFICIENCY CAUSE

Change to Attribute: Changed status to Retired, Name, Description

The primary presenting cause of ~~FUNCTIONAL DEFICIENCY~~ resulting in a ~~PATIENT~~'s referral to a ~~CONSULTANT~~ or to a Professional Staff Group Service. **This item has been retired from the NHS Data Model and Dictionary.**

Classification: **The last live version of this item is available in the February 2014 release of the NHS Data Model and Dictionary.**

- a. ~~Development delay~~
- b. ~~Vascular - diabetes~~
- c. ~~Vascular - other~~
- d. ~~Trauma~~
- e. ~~Malignancy~~
- f. ~~Neurological conditions~~
- g. ~~Arthritis~~
- h. ~~Cardiopulmonary~~
- i. ~~Other~~

Access to this version can be obtained by emailing information.standards@hscic.gov.uk with "NHS Data Model and Dictionary - Archive Request" in the email subject line.

FUNCTIONAL DEFICIENCY CAUSE (RETIRED) renamed from FUNCTIONAL DEFICIENCY CAUSE

Change to Attribute: Changed status to Retired, Name, Description

- Retired FUNCTIONAL DEFICIENCY CAUSE
- Changed Name from Data_Dictionary.Attributes.F.Fue.FUNCTIONAL_DEFICIENCY_CAUSE to Retired.Data_Dictionary.Attributes.F.FUNCTIONAL_DEFICIENCY_CAUSE
- Changed Description

FUNCTIONAL DEFICIENCY TYPE (RETIRED)_ renamed from FUNCTIONAL DEFICIENCY TYPE

Change to Attribute: Changed status to Retired, Name, Description

~~A classification of the function to be restored, by reference to the affected part of the body, which is the subject of the particular referral to a [CONSULTANT](#) in Rehabilitation Medicine or to a Professional Staff Group Service (i.e., to a therapist).~~ **This item has been retired from the NHS Data Model and Dictionary.**

Classification: The last live version of this item is available in the February 2014 release of the NHS Data Model and Dictionary.

a	Upper limb absence - right
b	Upper limb absence - left
c	Lower limb absence - right
d	Lower limb absence - left
e	Multiple limb absence
f	Upper limb dysfunction - right
g	Upper limb dysfunction - left
h	Lower limb dysfunction - right
i	Lower limb dysfunction - left
j	Multiple limb dysfunction
k	Combined limb absence and limb dysfunction
t	Spinal dysfunction

Access to this version can be obtained by emailing information.standards@hscic.gov.uk with "NHS Data Model and Dictionary - Archive Request" in the email subject line.

FUNCTIONAL DEFICIENCY TYPE (RETIRED)_ renamed from FUNCTIONAL DEFICIENCY TYPE

Change to Attribute: Changed status to Retired, Name, Description

- Retired FUNCTIONAL DEFICIENCY TYPE
 - Changed Name from Data_Dictionary.Attributes.F.Fue.FUNCTIONAL_DEFICIENCY_TYPE to Retired.Data_Dictionary.Attributes.F.FUNCTIONAL_DEFICIENCY_TYPE
 - Changed Description
-

HEALTHY PERSON STAY END DATE (RETIRED)_ renamed from HEALTHY PERSON STAY END DATE

Change to Attribute: Changed status to Retired, Name, Description

~~The date the stay ends.~~ **This item has been retired from the NHS Data Model and Dictionary.**

The last live version of this item is available in the February 2014 release of the NHS Data Model and Dictionary.

Access to this version can be obtained by emailing information.standards@hscic.gov.uk with "NHS Data Model and Dictionary - Archive Request" in the email subject line.

HEALTHY PERSON STAY END DATE (RETIRED)_ renamed from HEALTHY PERSON STAY END DATE

Change to Attribute: Changed status to Retired, Name, Description

- Retired HEALTHY PERSON STAY END DATE
- Changed Name from Data_Dictionary.Attributes.H.HEALTHY_PERSON_STAY_END_DATE to Retired.Data_Dictionary.Attributes.H.HEALTHY_PERSON_STAY_END_DATE
- Changed Description

HEALTHY PERSON STAY NUMBER (RETIRED)_ renamed from HEALTHY PERSON STAY NUMBER

Change to Attribute: Changed status to Retired, Name, Description

The unique sequence number given to a healthy [PERSON](#) who lodges overnight and uses a [Hospital Bed](#) from the hospital's [PATIENT](#) bed stock or other special facilities. **This item has been retired from the NHS Data Model and Dictionary.**

The last live version of this item is available in the February 2014 release of the NHS Data Model and Dictionary.

Access to this version can be obtained by emailing information.standards@hscic.gov.uk with "NHS Data Model and Dictionary - Archive Request" in the email subject line.

HEALTHY PERSON STAY NUMBER (RETIRED)_ renamed from HEALTHY PERSON STAY NUMBER

Change to Attribute: Changed status to Retired, Name, Description

- Retired HEALTHY PERSON STAY NUMBER
- Changed Name from Data_Dictionary.Attributes.H.HEALTHY_PERSON_STAY_NUMBER to Retired.Data_Dictionary.Attributes.H.HEALTHY_PERSON_STAY_NUMBER
- Changed Description

HEALTHY PERSON STAY START DATE (RETIRED)_ renamed from HEALTHY PERSON STAY START DATE

Change to Attribute: Changed status to Retired, Name, Description

~~The date the stay begins.~~ **This item has been retired from the NHS Data Model and Dictionary.**

The last live version of this item is available in the February 2014 release of the NHS Data Model and Dictionary.

Access to this version can be obtained by emailing information.standards@hscic.gov.uk with "NHS Data Model and Dictionary - Archive Request" in the email subject line.

HEALTHY PERSON STAY START DATE (RETIRED)_ renamed from HEALTHY PERSON STAY START DATE

Change to Attribute: Changed status to Retired, Name, Description

- Retired HEALTHY PERSON STAY START DATE
- Changed Name from Data_Dictionary.Attributes.H.HEALTHY_PERSON_STAY_START_DATE to

Retired.Data_Dictionary.Attributes.H.HEALTHY_PERSON_STAY_START_DATE

- Changed Description

HEALTHY PERSON STAY TYPE (RETIRED)_ renamed from HEALTHY PERSON STAY TYPE

Change to Attribute: Changed status to Retired, Name, Description

~~This categorises the type of stay in a hospital by a healthy [PERSON](#). The broad categories are defined by the relationship of a healthy [PERSON](#) to the [PATIENT](#) which he/she accompanies. This item has been retired from the NHS Data Model and Dictionary.~~

~~**Classification:** The last live version of this item is available in the February 2014 release of the NHS Data Model and Dictionary.~~

- ~~a: Parent – Baby up to the age of 28 days~~
- ~~b: Baby or child – Parent, brother or sister~~
- ~~c: Adult – Child~~
- ~~d: Relative or friend – Adult~~

~~Access to this version can be obtained by emailing information.standards@hscic.gov.uk with "NHS Data Model and Dictionary - Archive Request" in the email subject line.~~

HEALTHY PERSON STAY TYPE (RETIRED)_ renamed from HEALTHY PERSON STAY TYPE

Change to Attribute: Changed status to Retired, Name, Description

- Retired HEALTHY PERSON STAY TYPE
- Changed Name from Data_Dictionary.Attributes.H.HEALTHY_PERSON_STAY_TYPE to Retired.Data_Dictionary.Attributes.H.HEALTHY_PERSON_STAY_TYPE
- Changed Description

NUMBER OF PLACE DAYS INTENDED AVAILABLE (RETIRED)_ renamed from NUMBER OF PLACE DAYS INTENDED AVAILABLE

Change to Attribute: Changed status to Retired, Name, Description

~~This records the number of day care place days intended to be available over the operational planning period. This item has been retired from the NHS Data Model and Dictionary.~~

~~The last live version of this item is available in the February 2014 release of the NHS Data Model and Dictionary.~~

~~Access to this version can be obtained by emailing information.standards@hscic.gov.uk with "NHS Data Model and Dictionary - Archive Request" in the email subject line.~~

NUMBER OF PLACE DAYS INTENDED AVAILABLE (RETIRED)_ renamed from NUMBER OF PLACE DAYS INTENDED AVAILABLE

Change to Attribute: Changed status to Retired, Name, Description

- Retired NUMBER OF PLACE DAYS INTENDED AVAILABLE
- Changed Name from Data_Dictionary.Attributes.N.No.NUMBER_OF_PLACE_DAYS_INTENDED_AVAILABLE to Retired.Data_Dictionary.Attributes.N.NUMBER_OF_PLACE_DAYS_INTENDED_AVAILABLE

- Changed Description

OTHER REFERRER CODE (RETIRED)_ renamed from OTHER REFERRER CODE

Change to Attribute: Changed status to Retired, Name, Description

A code to classify people or organisation groups, other than [GENERAL PRACTITIONERS](#) or [CONSULTANTS](#), who may refer [PATIENTS](#) to [Health Care Providers](#). This item has been retired from the NHS Data Model and Dictionary.

The last live version of this item is available in the February 2014 release of the NHS Data Model and Dictionary.

Access to this version can be obtained by emailing information.standards@hscic.gov.uk with "NHS Data Model and Dictionary - Archive Request" in the email subject line.

OTHER REFERRER CODE (RETIRED)_ renamed from OTHER REFERRER CODE

Change to Attribute: Changed status to Retired, Name, Description

- Retired OTHER REFERRER CODE
- Changed Name from Data_Dictionary.Attributes.O.Org.OTHER_REFERRER_CODE to Retired.Data_Dictionary.Attributes.O.OTHER_REFERRER_CODE
- Changed Description

REFERRAL REQUEST CANCELLED DATE (RETIRED)_ renamed from REFERRAL REQUEST CANCELLED DATE

Change to Attribute: Changed status to Retired, Name, Description

The date on which a [REFERRAL REQUEST](#) was cancelled, regardless of the reason for the cancellation. This item has been retired from the NHS Data Model and Dictionary.

The last live version of this item is available in the February 2014 release of the NHS Data Model and Dictionary.

Access to this version can be obtained by emailing information.standards@hscic.gov.uk with "NHS Data Model and Dictionary - Archive Request" in the email subject line.

REFERRAL REQUEST CANCELLED DATE (RETIRED)_ renamed from REFERRAL REQUEST CANCELLED DATE

Change to Attribute: Changed status to Retired, Name, Description

- Retired REFERRAL REQUEST CANCELLED DATE
- Changed Name from Data_Dictionary.Attributes.R.Red.REFERRAL_REQUEST_CANCELLED_DATE to Retired.Data_Dictionary.Attributes.R.REFERRAL_REQUEST_CANCELLED_DATE
- Changed Description

SPECIAL FACILITY INDICATOR (RETIRED)_ renamed from SPECIAL FACILITY INDICATOR

Change to Attribute: Changed status to Retired, Name, Description

~~This indicator is used when a healthy lodger uses special facilities to stay overnight in hospital.~~ **This item has been retired from the NHS Data Model and Dictionary.**

The last live version of this item is available in the February 2014 release of the NHS Data Model and Dictionary.

Access to this version can be obtained by emailing information.standards@hscic.gov.uk with "NHS Data Model and Dictionary - Archive Request" in the email subject line.

SPECIAL FACILITY INDICATOR (RETIRED)__ renamed from SPECIAL FACILITY INDICATOR

Change to Attribute: Changed status to Retired, Name, Description

- Retired SPECIAL FACILITY INDICATOR
- Changed Name from Retired.Data_Dictionary.Attributes.S.SPECIAL_FACILITY_INDICATOR to Retired.Data_Dictionary.Attributes.S.SPECIAL_FACILITY_INDICATOR
- Changed Description

SURVEILLANCE PROGRAMME GROUP (RETIRED)__ renamed from SURVEILLANCE PROGRAMME GROUP

Change to Attribute: Changed status to Retired, Name, Description

~~A target population at whom a [Surveillance Programme](#) is aimed.~~ **This item has been retired from the NHS Data Model and Dictionary.**

~~Examples:~~ **The last live version of this item is available in the February 2014 release of the NHS Data Model and Dictionary.**

- a. [Neonates](#)
- b. ~~Pre-school children~~
- c. ~~School entry children~~
- d. ~~School-age children~~

~~Note: This list is an example only and may be adjusted to meet local requirements.~~ **Access to this version can be obtained by emailing information.standards@hscic.gov.uk with "NHS Data Model and Dictionary - Archive Request" in the email subject line.**

SURVEILLANCE PROGRAMME GROUP (RETIRED)__ renamed from SURVEILLANCE PROGRAMME GROUP

Change to Attribute: Changed status to Retired, Name, Description

- Retired SURVEILLANCE PROGRAMME GROUP
- Changed Name from Data_Dictionary.Attributes.S.Sup.SURVEILLANCE_PROGRAMME_GROUP to Retired.Data_Dictionary.Attributes.S.SURVEILLANCE_PROGRAMME_GROUP
- Changed Description

WARD PLAN TOTAL BED MIDWIFE ACCESS (RETIRED)_ renamed from WARD PLAN

TOTAL BED MIDWIFE ACCESS

Change to Attribute: Changed status to Retired, Name, Description

The number of [Hospital Beds](#) to be available in a [WARD](#) for [MIDWIFE](#) led delivery episodes during the period of a [WARD OPERATIONAL PLAN](#). This item has been retired from the NHS Data Model and Dictionary.

The last live version of this item is available in the February 2014 release of the NHS Data Model and Dictionary.

Access to this version can be obtained by emailing information.standards@hscic.gov.uk with "NHS Data Model and Dictionary - Archive Request" in the email subject line.

WARD PLAN TOTAL BED MIDWIFE ACCESS (RETIRED)_ renamed from WARD PLAN TOTAL BED MIDWIFE ACCESS

Change to Attribute: Changed status to Retired, Name, Description

- Retired WARD PLAN TOTAL BED MIDWIFE ACCESS
- Changed Name from Data_Dictionary.Attributes.W.Ward.WARD_PLAN_TOTAL_BED_MIDWIFE_ACCESS to Retired.Data_Dictionary.Attributes.W.WARD_PLAN_TOTAL_BED_MIDWIFE_ACCESS
- Changed Description

For enquiries about this Change Request, please email information.standards@hscic.gov.uk