

Health and Social Care Information Centre

NHS Data Model and Dictionary Service

Type:	Data Dictionary Change Notice
Reference:	1423
Version No:	1.0
Subject:	Retirement of Standards - DSCNs 37/98/A09, 14/97/P08, 12/2002, 37/2003, 14/2004 and 27/2001
Effective Date:	1 April 2014
Reason for Change:	Retirement of Data Standards
Publication Date:	26 February 2014

Background:

The Information Standards Board for Health and Social Care (ISB) has conducted a review of all Data Set Change Notices (DSCNs) and Information Standards Notices (ISNs) issued since 1987, to update its portfolio of standards prior to the handover of responsibility to NHS England, the Health and Social Care Information Centre (HSCIC) and Public Health England.

This review has identified a number of data standards in the NHS Data Model and Dictionary which have been superseded or are no longer in use.

This Data Dictionary Change Notice (DDCN) retires the items in the NHS Data Model and Dictionary in line with the retirement of the following Data Set Change Notices, as listed on the ISB [Advanced Notification - Withdrawal](#) issued 26/09/13:

- DSCN 37/98/A09 - Abolition of the Internal Market - NHS Service Agreements
- DSCN 14/97/P08 - Data Standards: Drug Misuse Databases
- DSCN 12/2002 - Data Standards: Elective admission suspension details
- DSCN 37/2003 - Data Standards: Measuring and recording of waiting times for KH07, QF01, QM08 and QM08R
- DSCN 14/2004 - Data Standards: Removal of CMDS
- DSCN 27/2001 - Data Standards: Person and Person related information

To view a demonstration on "How to Read an NHS Data Model and Dictionary Change Request", visit the NHS Data Model and Dictionary help pages at: http://www.datadictionary.nhs.uk/Flash_Files/changerequest.htm.

Note: if the web page does not open, please copy the link and paste into the web browser.

Summary of changes:

Diagrams

ACTIVITY DIAGRAM	Changed Diagram
ADDRESS GEOGRAPHICAL AREA AND COMMUNICATION DIAGRAM	Changed Diagram
APPOINTMENTS DIAGRAM	Changed Diagram
CANCER OUTCOMES AND SERVICES DIAGRAM	Changed Diagram
CHILD AND ADOLESCENT MENTAL HEALTH SERVICES SECONDARY USES DIAGRAM	Changed Diagram
CHILDREN AND YOUNG PEOPLE'S HEALTH SERVICE SECONDARY USES DIAGRAM	Changed Diagram
COMMUNITY DIAGRAM	Changed Diagram
HIV AND AIDS DIAGRAM	Changed Diagram
IMPROVING ACCESS TO PSYCHOLOGICAL THERAPIES DIAGRAM	Changed Diagram

MATERNITY SERVICES SECONDARY USES DIAGRAM	Changed Diagram
NATIONAL JOINT REGISTRY DIAGRAM	Changed Diagram
NATIONAL RENAL DIAGRAM	Changed Diagram
PATIENT PATHWAY DIAGRAM	Changed Diagram
PERSON AND PERSON PROPERTY DIAGRAM	Changed Diagram
RADIOTHERAPY DIAGRAM	Changed Diagram
REFERRAL REQUEST DIAGRAM	Changed Diagram
SYSTEMIC ANTI-CANCER THERAPY DIAGRAM	Changed Diagram
Supporting Information	
FACE TO FACE CONTACT COMMUNITY CARE	Changed Description
FACE TO FACE CONTACT SURVEILLANCE (RETIRED) renamed from FACE TO FACE CONTACT SURVEILLANCE	Changed Description, status to Retired, Name
NURSE OR MIDWIFE CONTACT	Changed Description
Class Definitions	
CARE CONTACT	Changed Attributes
CLINICAL INTERVENTION	Changed Attributes
NHS SERVICE AGREEMENT	Changed Attributes
NHS SERVICE AGREEMENT LINE	Changed Attributes
ORGAN DONATION CONSENT (RETIRED) renamed from ORGAN DONATION CONSENT	Changed Description, status to Retired, Name, Attributes, Supertype
ORGAN OR TISSUE DONOR	Changed Relationships
PATIENT	Changed Attributes
PERSON PROPERTY	Changed Description
PLANNED SERVICE UNDER AGREEMENT (RETIRED) renamed from PLANNED SERVICE UNDER AGREEMENT	Changed Description, status to Retired, Name, Relationships, Attributes
REFERRAL REQUEST	Changed Attributes
SERVICE PROVIDED UNDER AGREEMENT	Changed Attributes
SUBSTANCE MISUSED ROUTE (RETIRED) renamed from SUBSTANCE MISUSED ROUTE	Changed Description, status to Retired, Name, Relationships, Attributes
Attribute Definitions	
CARE CONTACT TYPE	Changed Description
CHRONICALLY SICK OR DISABLED (RETIRED) renamed from CHRONICALLY SICK OR DISABLED	Changed Description, status to Retired, Name
MATERNITY MEDICAL SERVICE TYPE (RETIRED) renamed from MATERNITY MEDICAL SERVICE TYPE	Changed Description, status to Retired, Name
NHS SERVICE AGREEMENT END DATE (RETIRED) renamed from NHS SERVICE AGREEMENT END DATE	Changed Description, status to Retired, Name
NHS SERVICE AGREEMENT LINE END DATE (RETIRED) renamed from NHS SERVICE AGREEMENT LINE END DATE	Changed Description, status to Retired, Name
NHS SERVICE AGREEMENT LINE START DATE (RETIRED) renamed from NHS SERVICE AGREEMENT LINE START DATE	Changed Description, status to Retired, Name
NHS SERVICE AGREEMENT START DATE (RETIRED) renamed from NHS SERVICE AGREEMENT START DATE	Changed Description, status to Retired, Name
ORGAN DONATION TYPE (RETIRED) renamed from ORGAN DONATION TYPE	Changed Description, status to Retired, Name
PLANNED SERVICE UNDER AGREEMENT END DATE (RETIRED) renamed from PLANNED SERVICE UNDER AGREEMENT END DATE	Changed Description, status to Retired, Name
PLANNED SERVICE UNDER AGREEMENT START DATE (RETIRED) renamed from PLANNED SERVICE UNDER AGREEMENT START DATE	Changed Description, status to Retired, Name
SERVICE PROVIDED UNDER AGREEMENT END DATE (RETIRED) renamed from SERVICE PROVIDED UNDER AGREEMENT END DATE	Changed Description, status to Retired, Name
SERVICE PROVIDED UNDER AGREEMENT START DATE (RETIRED) renamed from SERVICE PROVIDED UNDER AGREEMENT START DATE	Changed Description, status to Retired, Name

DATE

SOURCE OF REFERRAL FOR DRUG MISUSE (RETIRED) renamed from SOURCE OF REFERRAL FOR DRUG MISUSE

Changed Description, status to Retired, Name

SUBSTANCE MISUSED AGE AT FIRST USE (RETIRED) renamed from SUBSTANCE MISUSED AGE AT FIRST USE

Changed Description, status to Retired, Name

SUBSTANCE MISUSED ROUTE CODE (RETIRED) renamed from SUBSTANCE MISUSED ROUTE CODE

Changed Description, status to Retired, Name

SURVEILLANCE RESULT (RETIRED) renamed from SURVEILLANCE RESULT

Changed Description, status to Retired, Name

VACCINATION REASON INDICATOR (RETIRED) renamed from VACCINATION REASON INDICATOR

Changed Description, status to Retired, Name

Data Elements

INTENDED PROCEDURE (OPCS) (RETIRED) renamed from INTENDED PROCEDURE (OPCS)

Changed Description, status to Retired, Name

INTENDED PROCEDURE (READ) (RETIRED) renamed from INTENDED PROCEDURE (READ)

Changed Description, status to Retired, Name

NHS SERVICE AGREEMENT CHANGE TYPE (RETIRED) renamed from NHS SERVICE AGREEMENT CHANGE TYPE

Changed Description, status to Retired, Name, linked Attribute

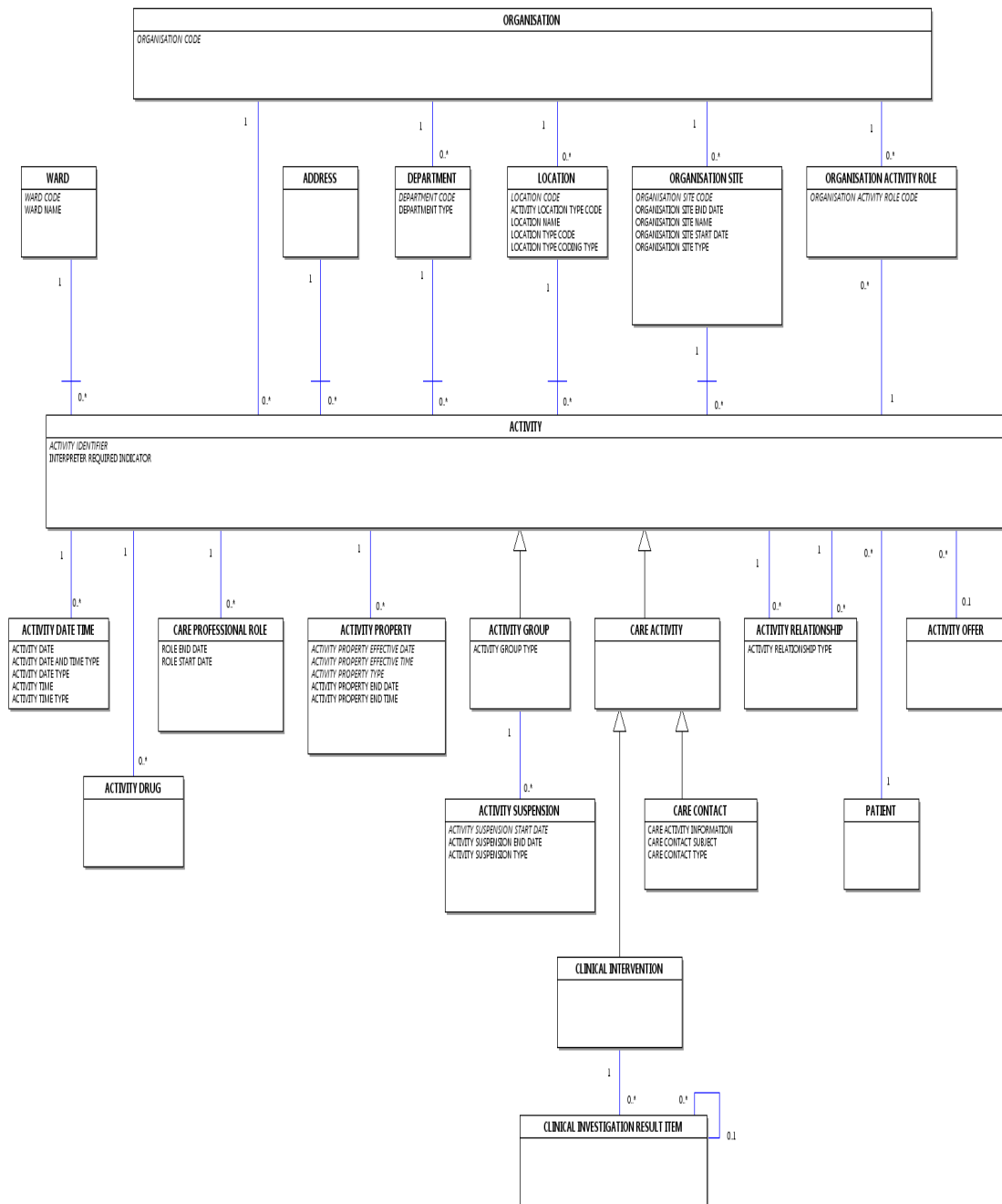
Date: 26 February 2014

Sponsor: Dr K. Lunn, Director of Information Standards Delivery. Health and Social Care Information Centre

Note: New text is shown with a blue background. Deleted text is crossed out. Retired text is shown in grey. Within the Diagrams deleted classes and relationships are red, changed items are blue and new items are green.

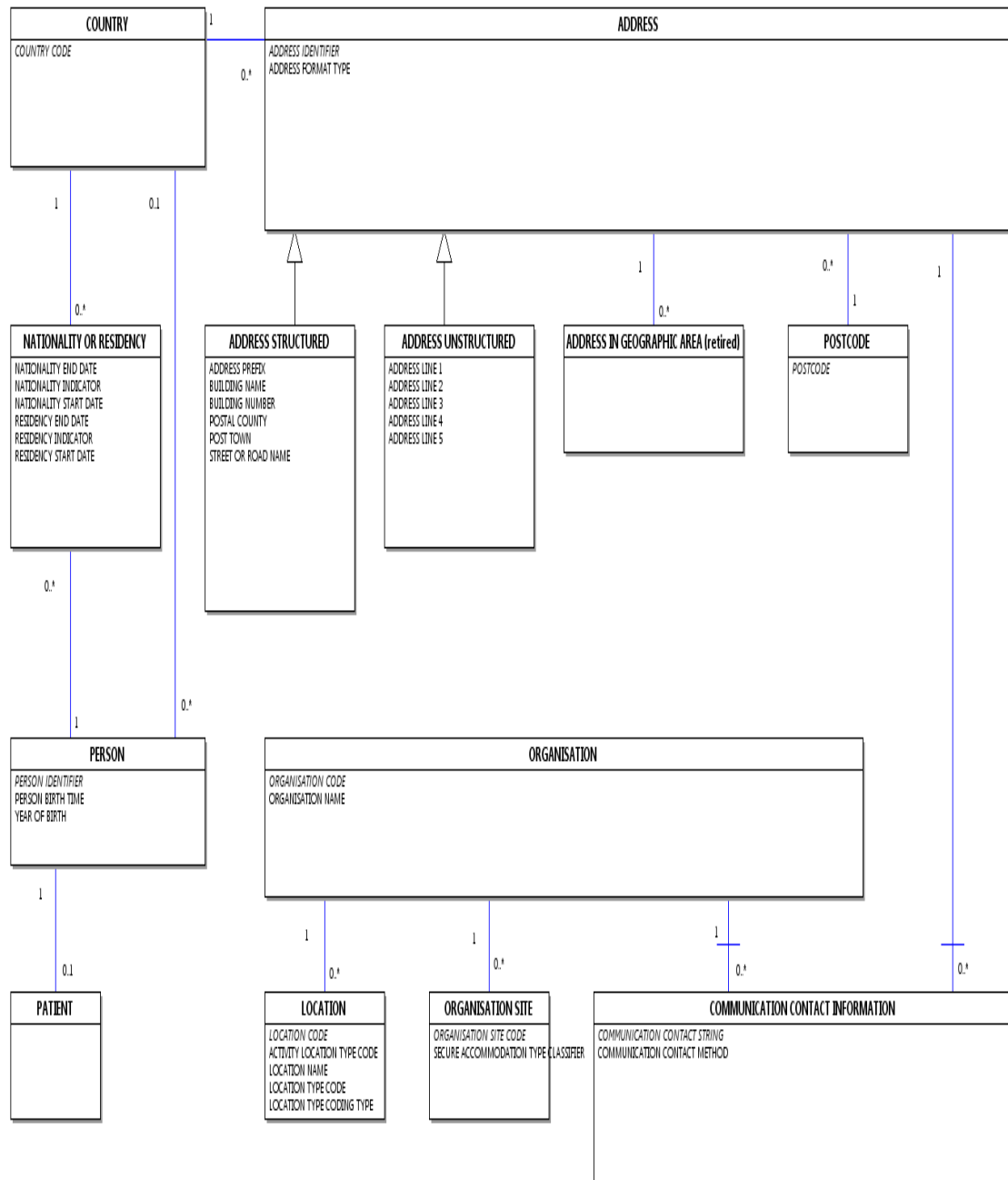
ACTIVITY DIAGRAM

Change to Diagram: Changed Diagram



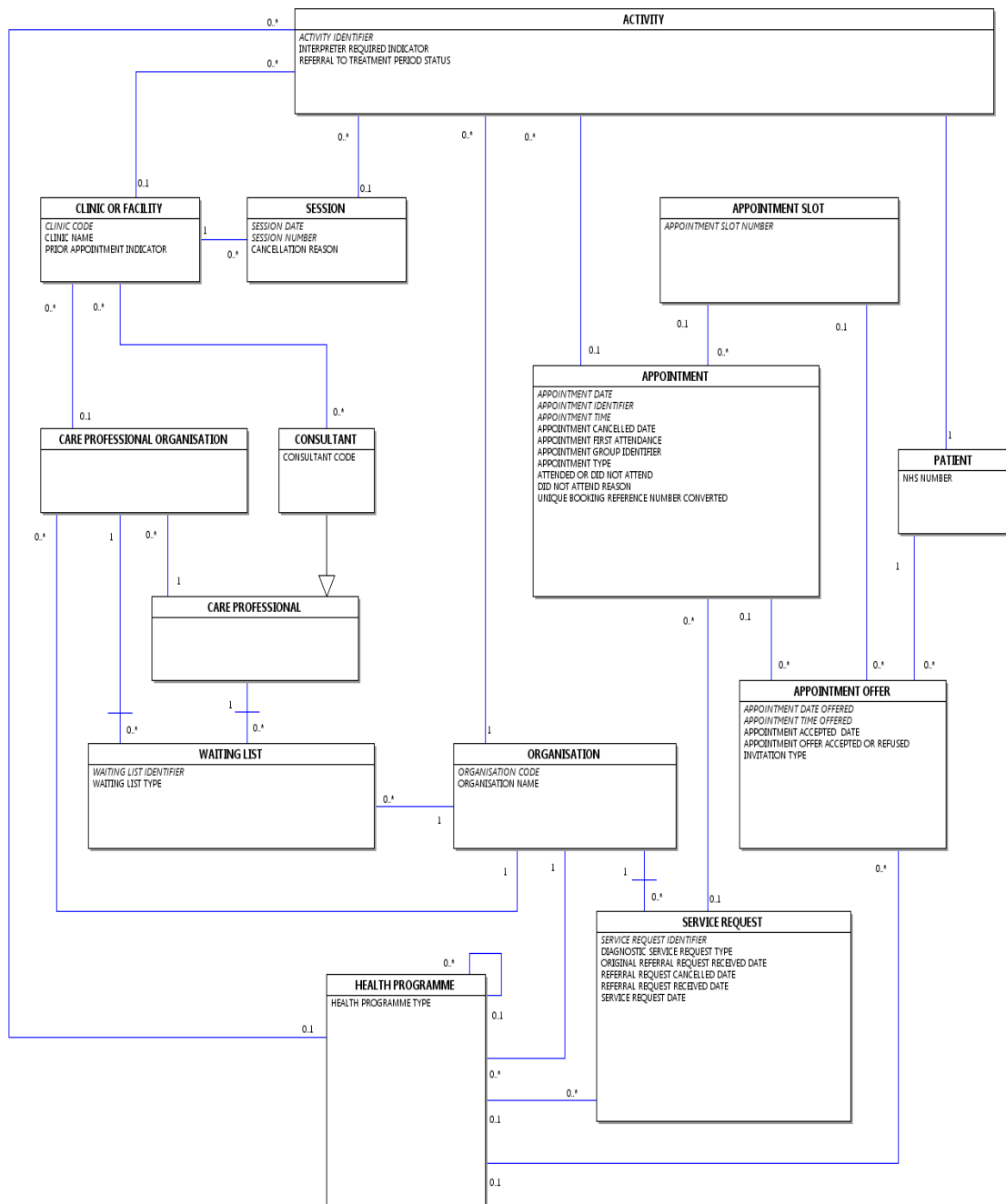
ADDRESS GEOGRAPHICAL AREA AND COMMUNICATION DIAGRAM

Change to Diagram: Changed Diagram



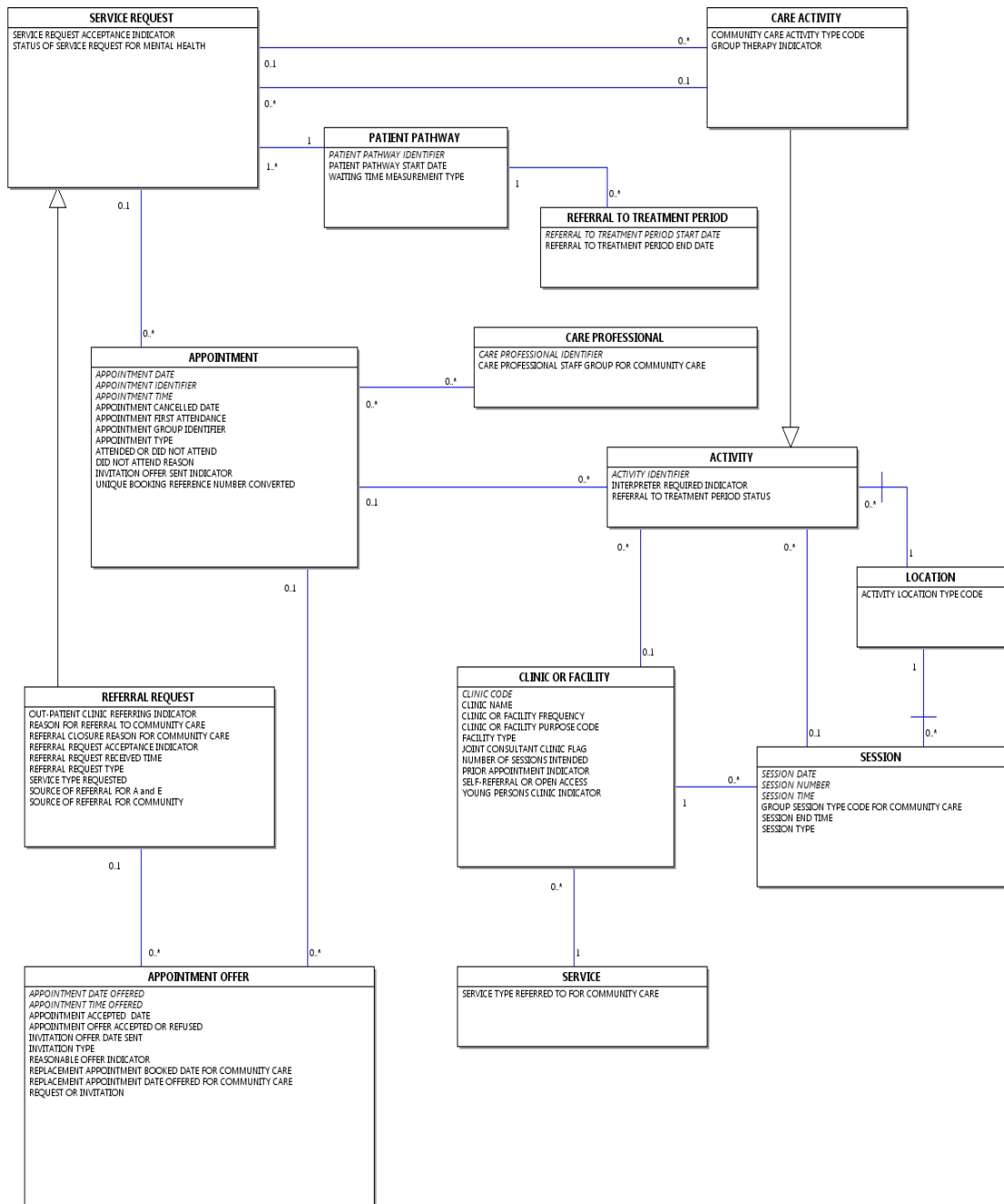
APPOINTMENTS DIAGRAM

Change to Diagram: Changed Diagram



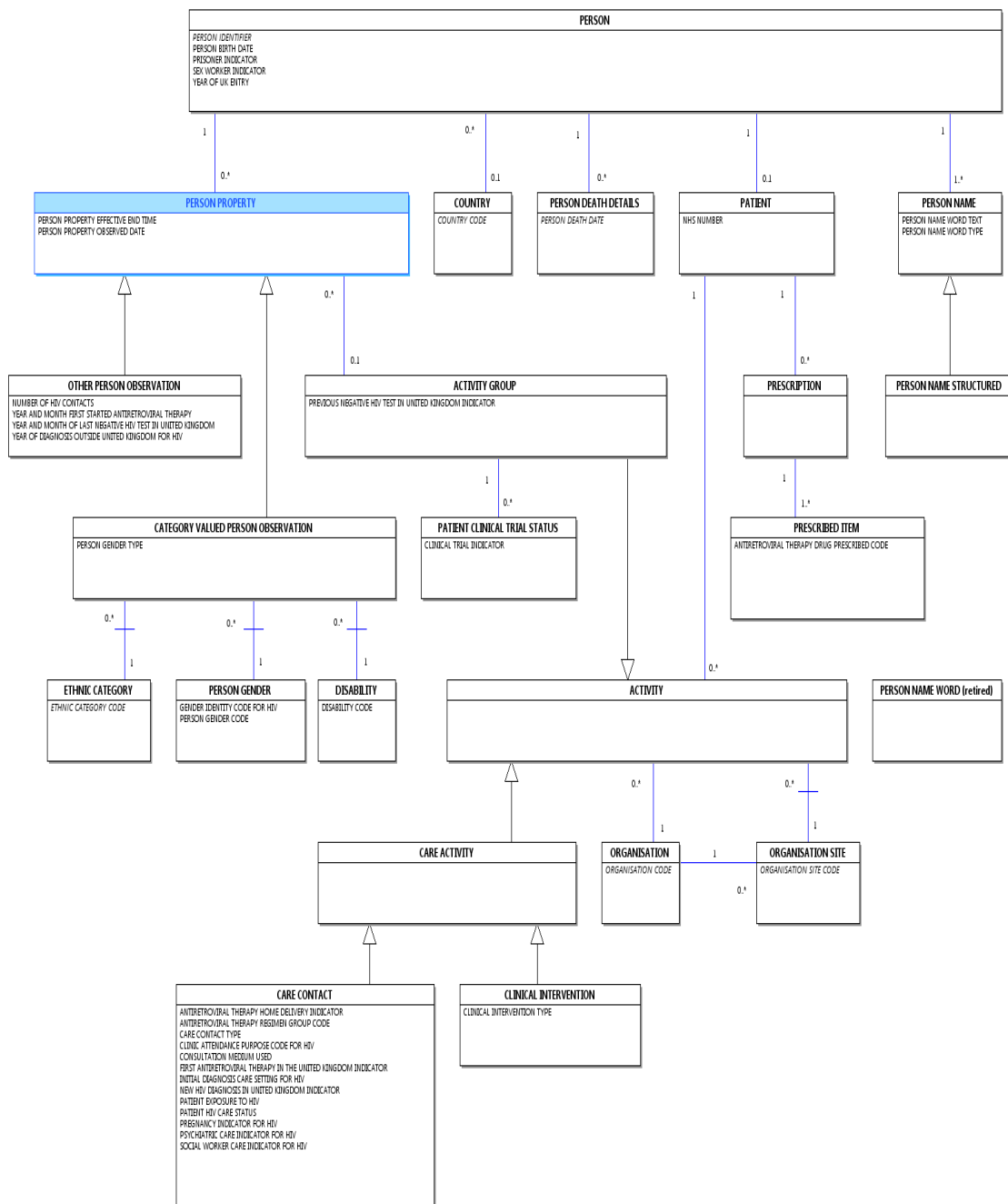
COMMUNITY DIAGRAM

Change to Diagram: Changed Diagram



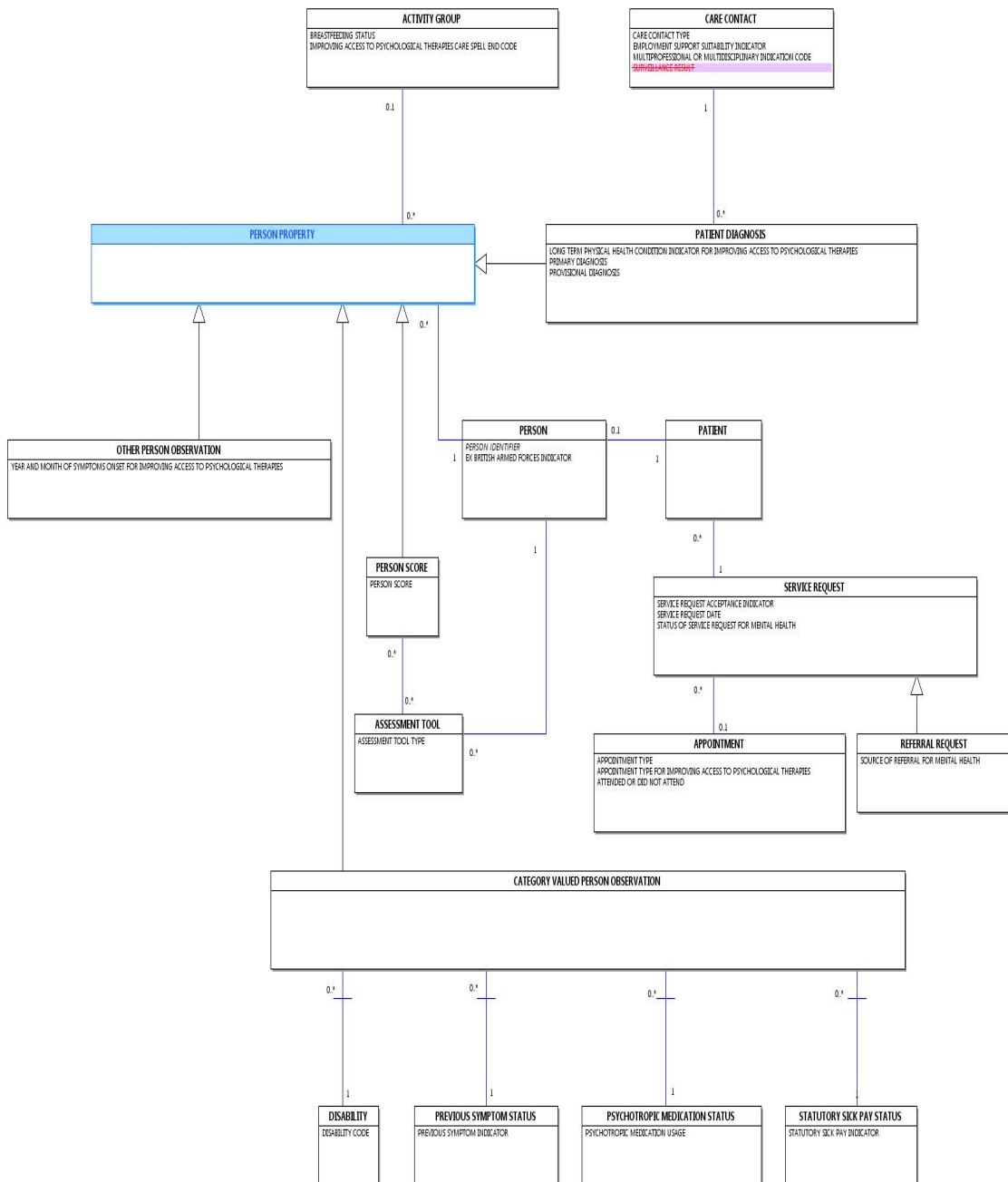
HIV AND AIDS DIAGRAM

Change to Diagram: Changed Diagram



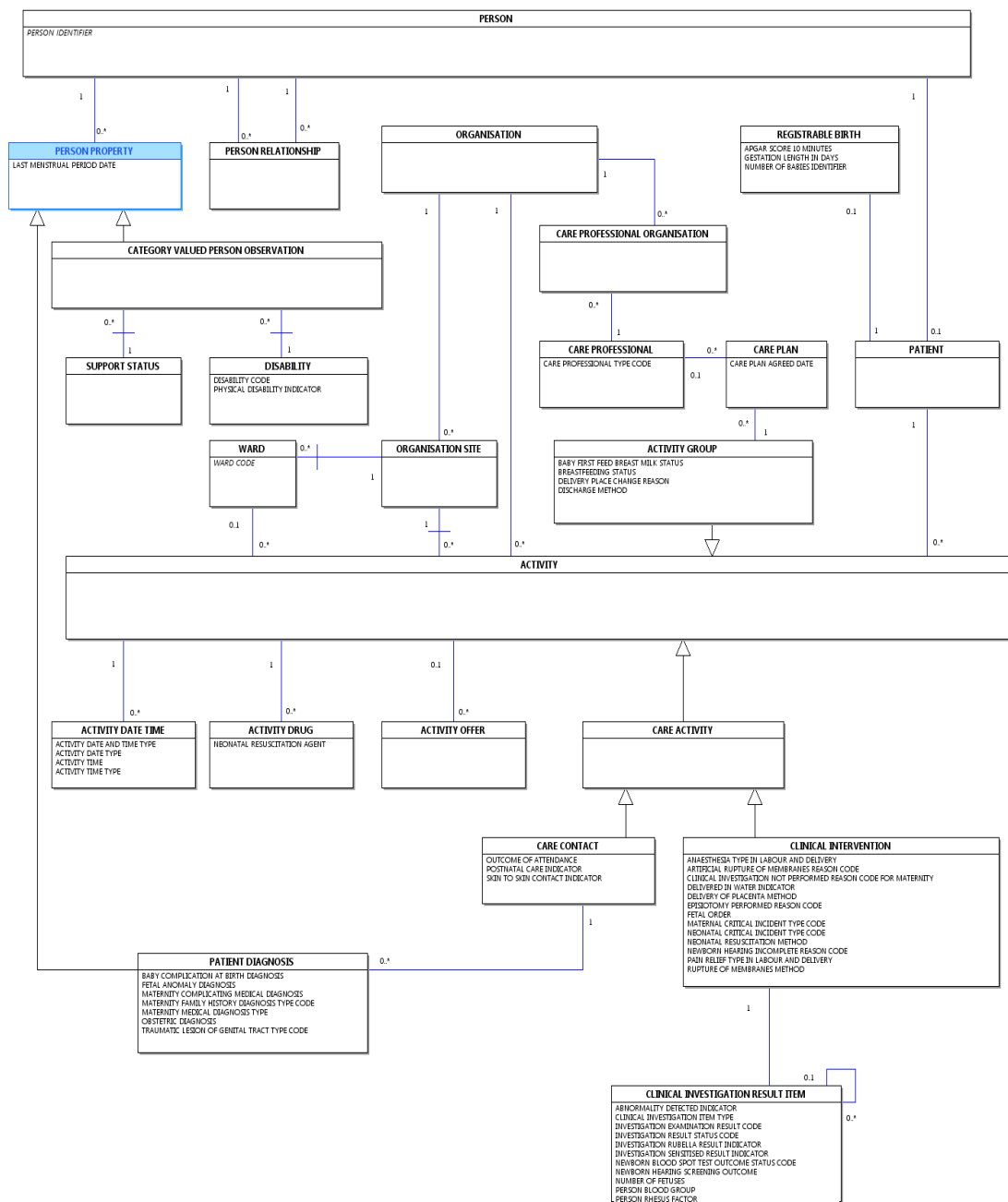
IMPROVING ACCESS TO PSYCHOLOGICAL THERAPIES DIAGRAM

Change to Diagram: Changed Diagram



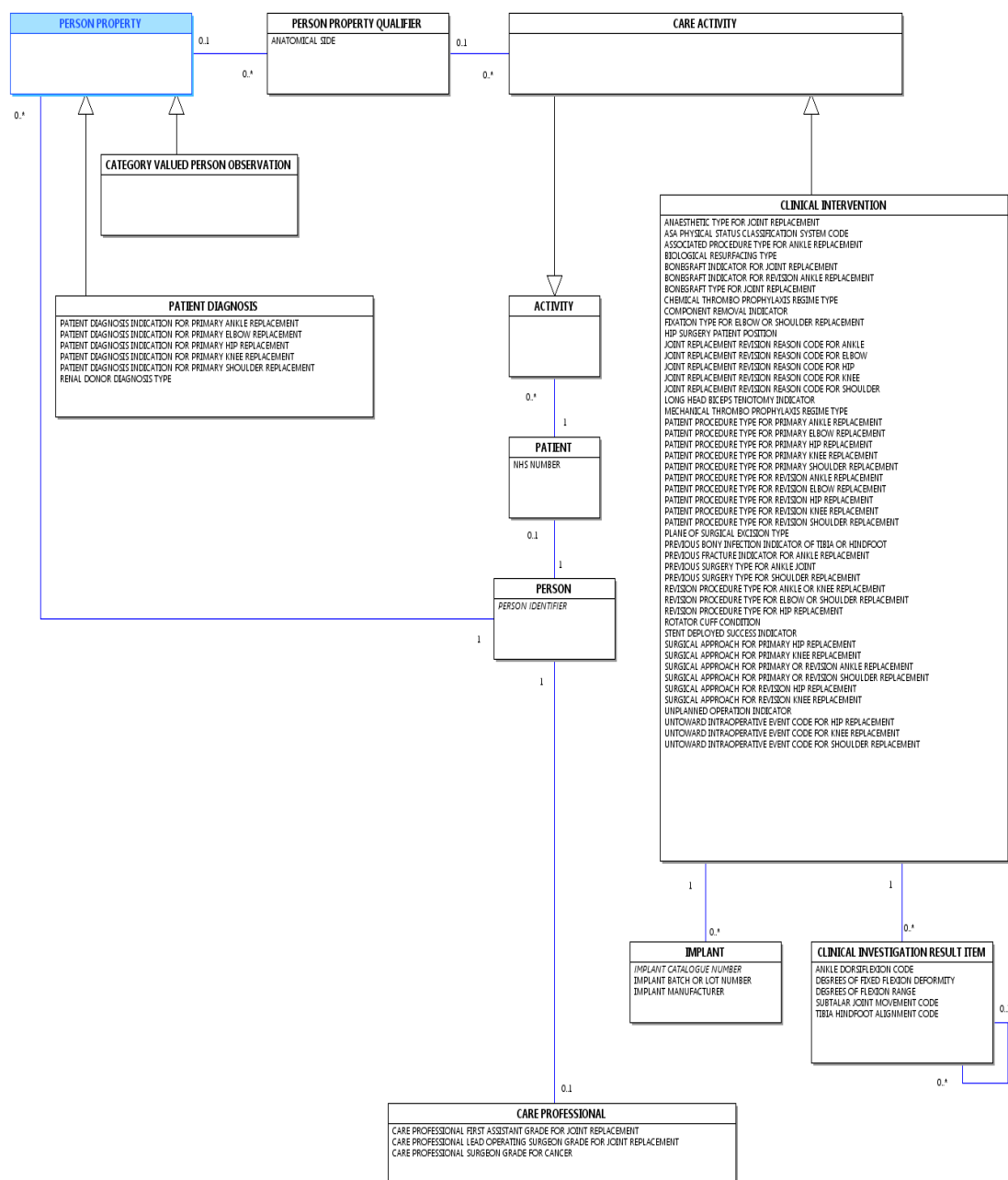
MATERNITY SERVICES SECONDARY USES DIAGRAM

Change to Diagram: Changed Diagram



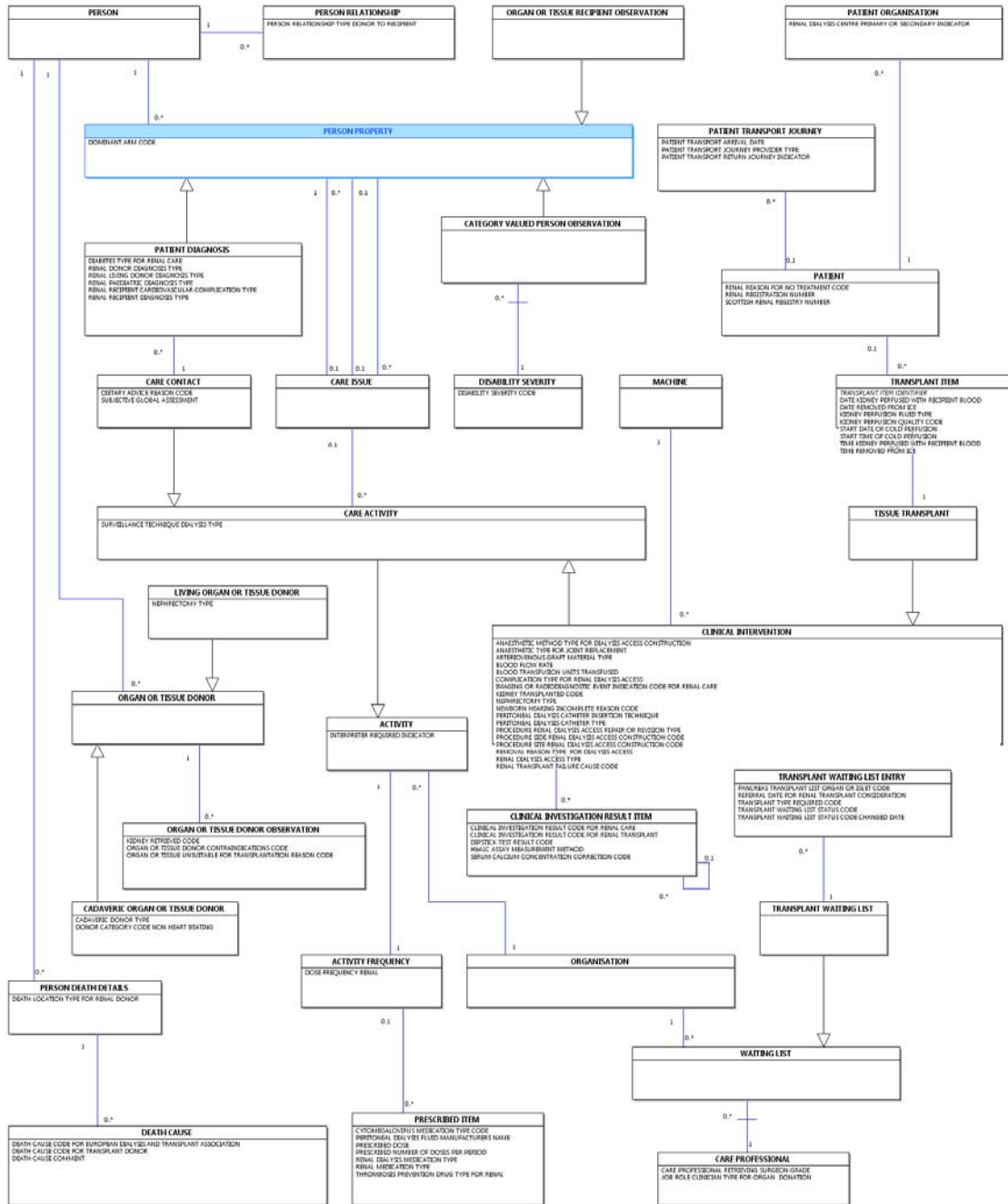
NATIONAL JOINT REGISTRY DIAGRAM

Change to Diagram: Changed Diagram



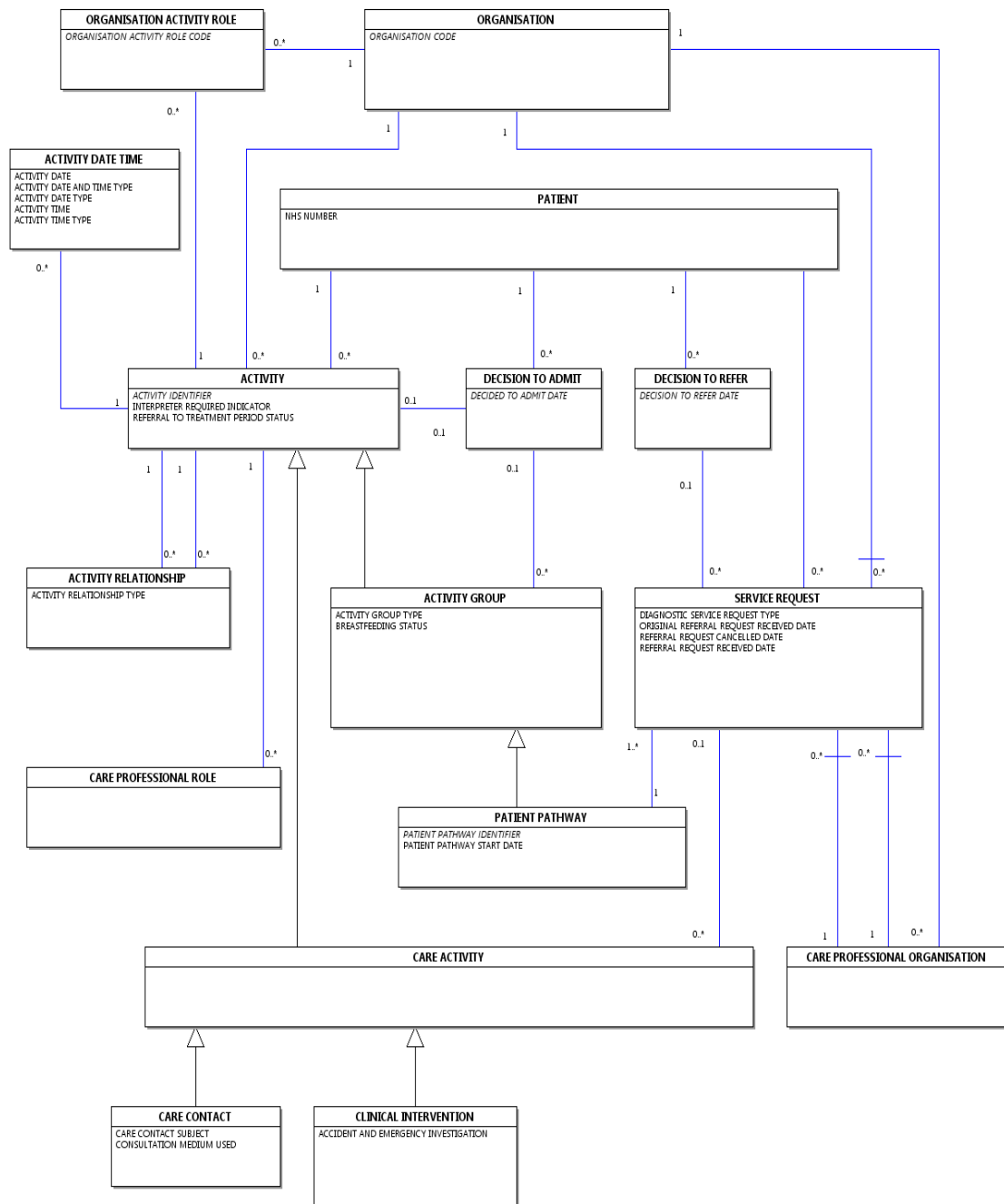
NATIONAL RENAL DIAGRAM

Change to Diagram: Changed Diagram



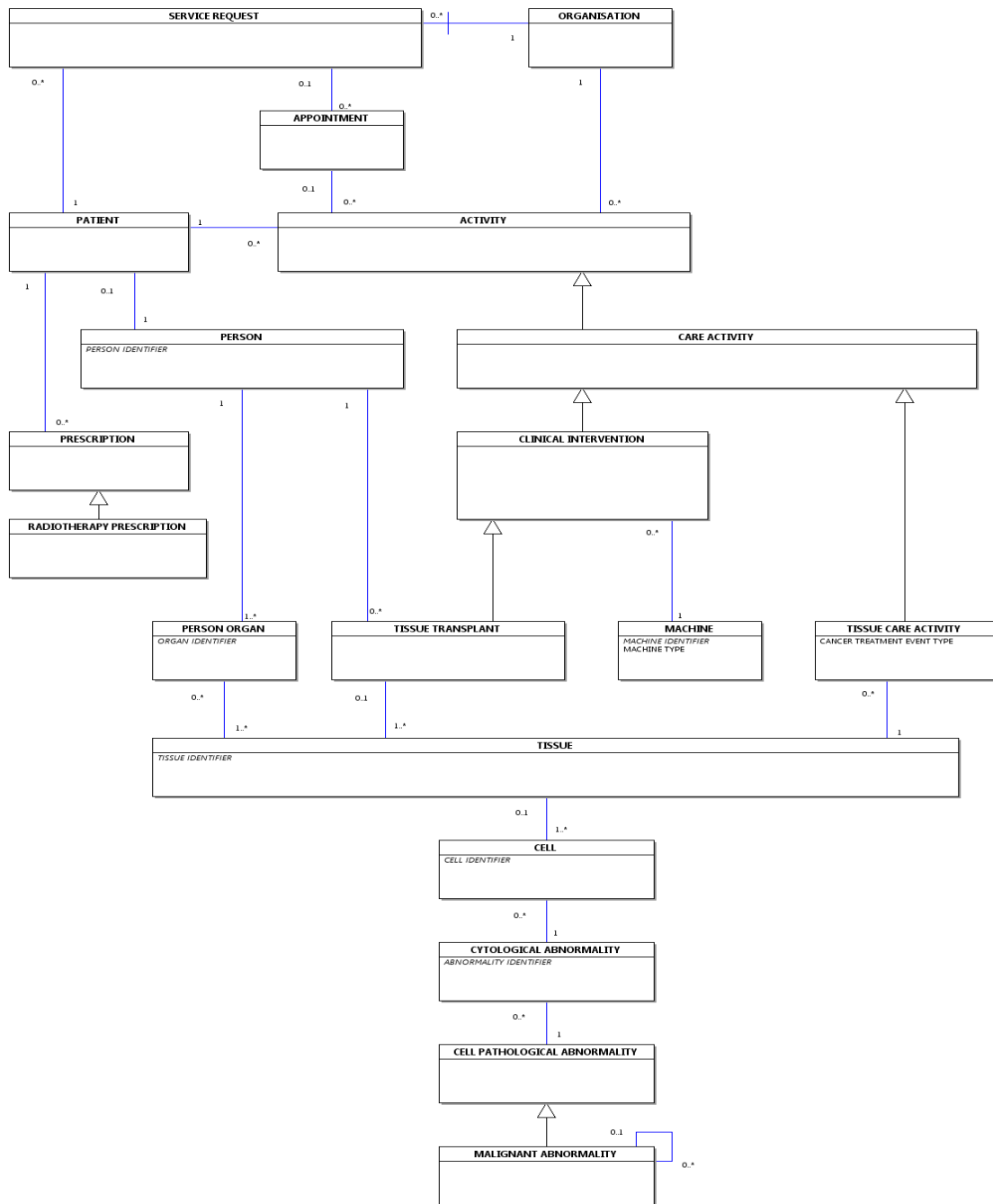
PATIENT PATHWAY DIAGRAM

Change to Diagram: Changed Diagram



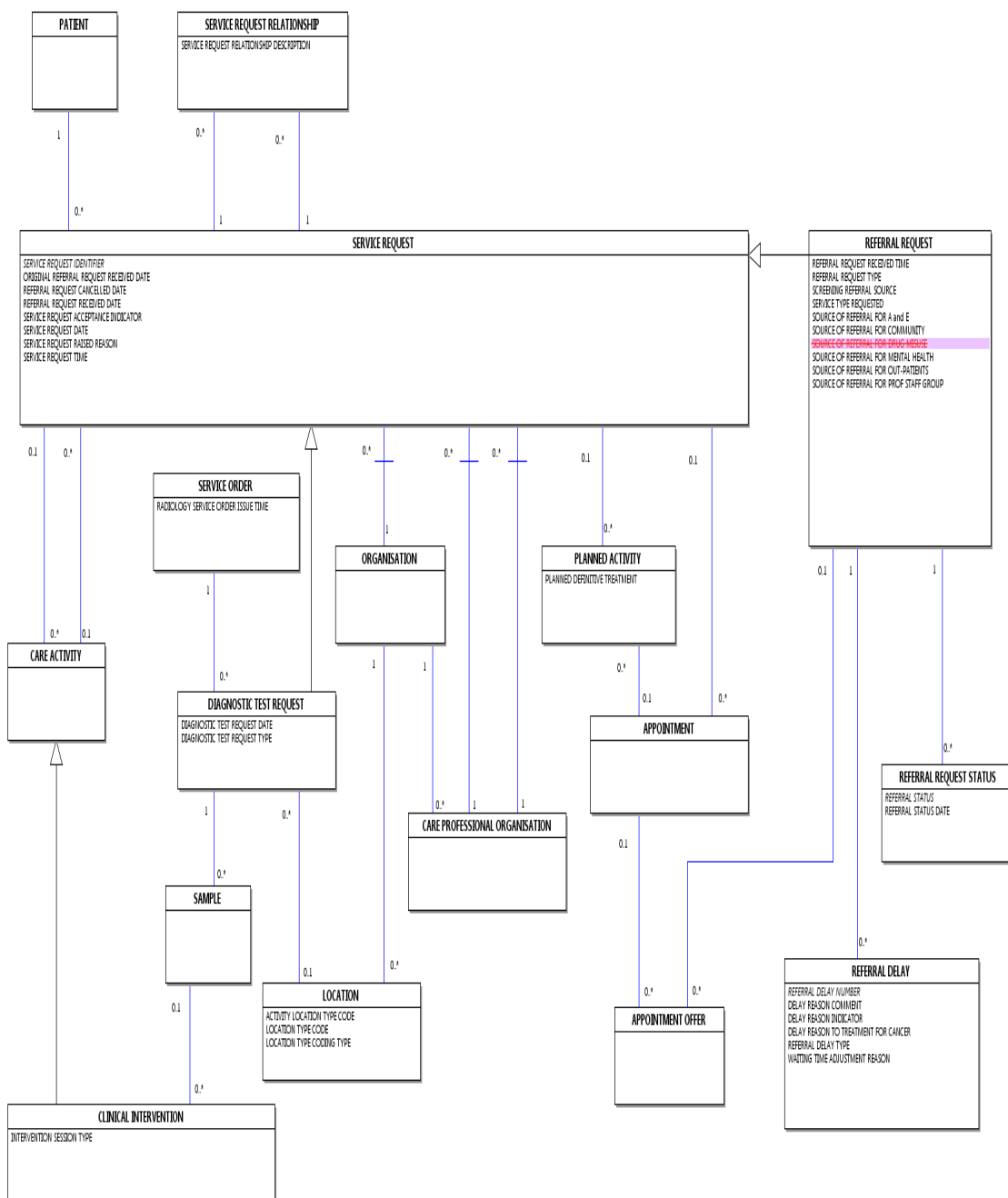
RADIOTHERAPY DIAGRAM

Change to Diagram: Changed Diagram



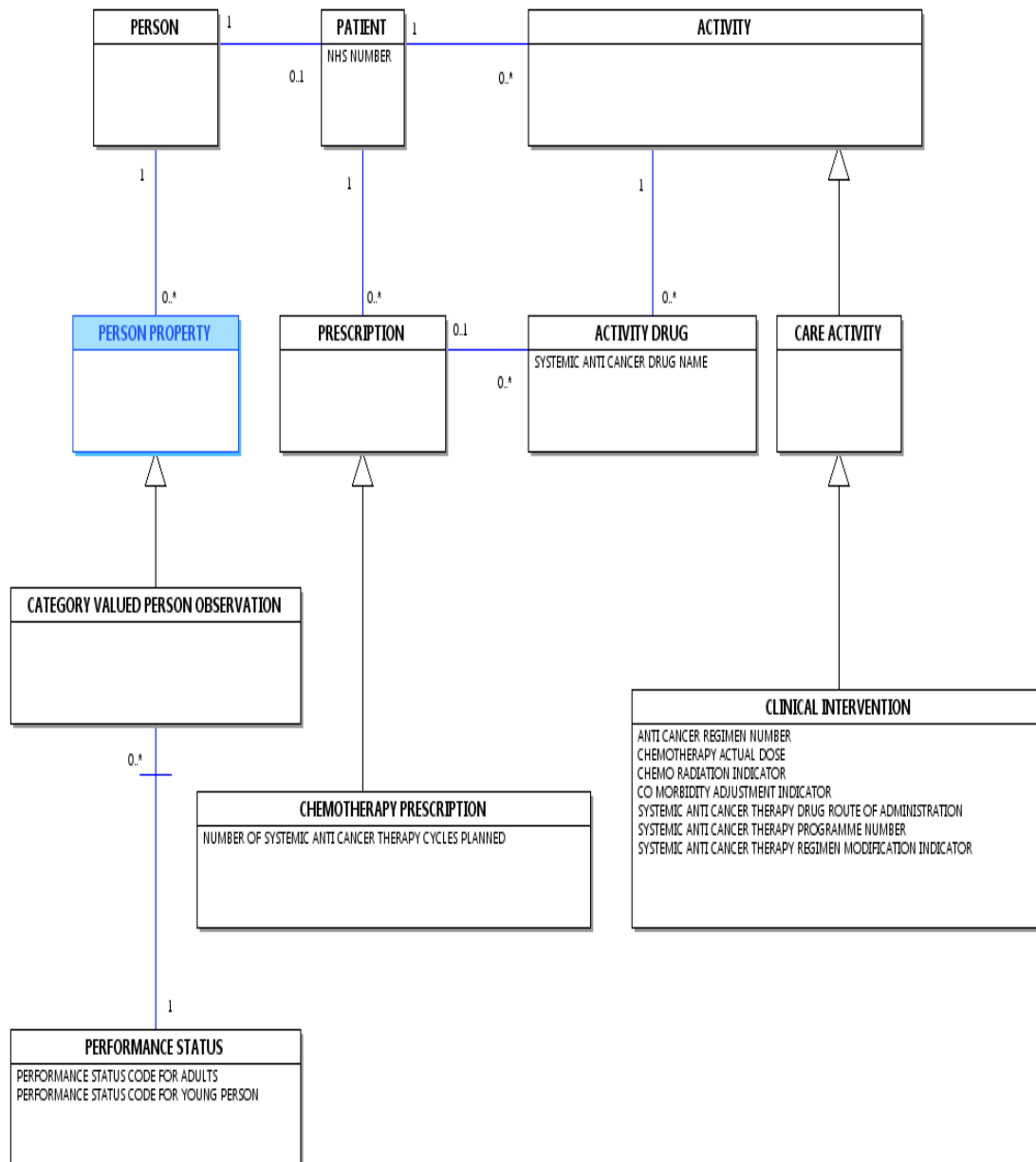
REFERRAL REQUEST DIAGRAM

Change to Diagram: Changed Diagram



SYSTEMIC ANTI-CANCER THERAPY DIAGRAM

Change to Diagram: Changed Diagram



FACE TO FACE CONTACT COMMUNITY CARE

Change to Supporting Information: Changed Description

[Face To Face Contact Community Care](#) is a [CARE CONTACT](#).

[Face To Face Contact Community Care](#) is a contact which is made by one or more [NURSES](#) or community support workers (nursing) with a [PATIENT](#) or his/her proxy during a [Community Episode](#). The contact occurs when a [PATIENT](#) or their proxy attends a clinic or when the [NURSE](#) or community support worker (nursing)

makes a domiciliary visit to see the [PATIENT](#).

A proxy contact is a single occasion involving contact between a proxy and one or more members of a [COMMUNITY NURSE STAFF GROUP](#) within a [Nursing In The Community Programme](#). Contacts with proxies only count if the contact is in lieu of the contact with the [PATIENT](#), and the proxy is able more effectively than the [PATIENT](#) to ensure that the specified advice/treatment devised for the [PATIENT](#) is followed. This is most likely to be the case where the [PATIENT](#) is unable to communicate effectively say for an infant, or for a [PERSON](#) who is mentally ill or has learning disabilities.

One or more nurses or community support workers (nursing) in the same or different [Nursing In The Community Programmes](#) may be in contact with a [PATIENT](#) at the same time.

Contacts should be recorded as follows:

- a. If one or more [NURSES](#) or community support workers (nursing) from the same programme are in contact with one [PATIENT](#) at the same time, this should be recorded as one face-to-face contact
- b. If one or more [NURSES](#) or community support workers (nursing) from different programmes are in contact with one [PATIENT](#) at the same time, this should be recorded as one contact for each programme involved
- c. For contacts at a [Day Care Facility](#), where repeated contacts may occur during the course of a day, this should be recorded as one contact for each programme involved
- d. If two [NURSES](#) of different disciplines but both classed in the community nurse staff group other community nurses, such as stomatherapist and a continuing care nurse, are in contact with one [PATIENT](#) at the same time, this should be recorded as two face-to-face contacts, one for each discipline

Group activity, where, for example, general advice is given to several [PATIENTS](#) at the same time should not be recorded as [Nurse or Midwife Contacts](#).

A [Face To Face Contact Community Care](#) may involve [ACTIVITIES](#) attributable to a structured programme, such as the following:

- a. [Screening Test](#)
- b. [Group Session](#)
- c. Health Promotion Other Activity
- d. [EDUCATIONAL ASSESSMENT](#)
- e. Test of Immunity
- f. [Immunisation Dose Given](#)
- g. ~~[Face To Face Contact Surveillance](#)~~

For such [ACTIVITIES](#) they must be recorded as part of the respective structured programmes as well as attributed to the [Nursing In The Community Programmes](#).

If the [PATIENT](#) is currently subject to a [Mental Health Care Spell](#) and the contact [NURSE](#) is also their allocated care programme approach care coordinator then a [Face To Face Contact CPA Care Coordinator](#) should also be recorded.

For domiciliary visits, an indication of whether the [Face To Face Contact Community Care](#) is the first occasion on which a [PATIENT](#) is seen should be recorded as an [Initial Contact](#). A [LOCATION](#) type should also be recorded.

Information recorded for a [Face To Face Contact Community Care](#) includes:

[Contact Date](#)

[First Contact In Financial Year](#)

[Initial Contact](#) (applies to domiciliary visits only)

[LOCATION](#) (applies to domiciliary visits only)

FACE TO FACE CONTACT SURVEILLANCE (RETIRED)_ renamed from FACE TO FACE CONTACT SURVEILLANCE

Change to Supporting Information: Changed Description, status to Retired, Name

[Face To Face Contact Surveillance](#) is a [CARE CONTACT](#). This item has been retired from the NHS Data Model and Dictionary.

A contact made by a health service professional with a [PERSON](#) during a [Surveillance Programme Stage](#). The last live version of this item is available in the February 2014 release of the NHS Data Model and Dictionary.

Information recorded for a [Face To Face Contact Surveillance](#) includes. Access to this version can be obtained by emailing information.standards@hscic.gov.uk with "NHS Data Model and Dictionary - Archive Request" in the email subject line.

[Contact Date](#)

[First Contact In Financial Year](#)

[Initial Contact](#)

[LOCATION](#)

[SURVEILLANCE RESULT](#)

FACE TO FACE CONTACT SURVEILLANCE (RETIRED)_ renamed from FACE TO FACE CONTACT SURVEILLANCE

Change to Supporting Information: Changed Description, status to Retired, Name

- Changed Description
- Retired Face To Face Contact Surveillance
- Changed Name from Data_Dictionary.NHS_Business_Definitions.F.Face_To_Face_Contact_Surveillance to Retired.Data_Dictionary.NHS_Business_Definitions.F.Face_To_Face_Contact_Surveillance

NURSE OR MIDWIFE CONTACT

Change to Supporting Information: Changed Description

A [Nurse or Midwife Contact](#) is a [CARE CONTACT](#).

A [Nurse or Midwife Contact](#) is a contact, attendance or visit as defined in each of the following:

- [Face To Face Contact Community Care](#)
- [Clinic Attendance Midwife](#)
- [Clinic Attendance Nurse](#)
- [Maternity Domiciliary Visit](#)
- [Clinic Attendance Sexual and Reproductive Health Service](#)
- [Sexual and Reproductive Health Domiciliary Visit](#)
- [Face To Face Contact Surveillance](#)
- [Ward Attendance](#)
- [Ward Attendance](#)

There must be only one [Nurse or Midwife Contact](#) recorded for a face to face contact, whether it is at a clinic or any other location at one [Health Care Provider](#).

There must be only one responsible [NURSE](#) or [MIDWIFE](#) for each [Nurse or Midwife Contact](#).

Nursing contacts may be made either by qualified [NURSES](#) or by community support workers (nursing).

A [Nurse or Midwife Contact](#) may be made by one of the [NURSE](#) types classified in [CARE PROFESSIONAL GROUP TYPE](#).

CARE CONTACT

Change to Class: Changed Attributes

Attributes of this Class are:

A and E ATTENDANCE CATEGORY
A and E INITIAL ASSESSMENT TRIAGE CATEGORY
A and E STREAM
ACCIDENT AND EMERGENCY ARRIVAL MODE
ACCIDENT AND EMERGENCY ATTENDANCE DISPOSAL
ACUTE HOME-BASED TELEPHONE CONTACT
ANTENATAL OR POSTNATAL INDICATOR
ANTIRETROVIRAL THERAPY HOME DELIVERY INDICATOR
ANTIRETROVIRAL THERAPY REGIMEN GROUP CODE
BRIEF INTERVENTION PROVIDED INDICATOR
BRIEF INTERVENTION TYPE FOR NHS HEALTH CHECK
CARE ACTIVITY INFORMATION
CARE CONTACT SERVICE TYPE FOR CHILDREN AND YOUNG PEOPLES HEALTH SERVICE SECONDARY USES
CARE CONTACT SUBJECT
CARE CONTACT TYPE
CARE CONTACT TYPE FOR CHILDREN AND YOUNG PEOPLES HEALTH SERVICE SECONDARY USES
CHILD DIFFICULT TO TEST REASON
CLINICAL NURSE SPECIALIST INDICATION CODE
CLINIC ATTENDANCE PURPOSE CODE FOR HIV
COLPOSCOPY PRIME PROCEDURE TYPE
CONSULTATION MEDIUM USED
CONTRACEPTIVE ADVICE GIVEN
CONTRACEPTIVE SERVICE TYPE
DECISION TO UNDERTAKE FURTHER ASSESSMENT INDICATOR
DIETARY ADVICE REASON CODE
EMPLOYMENT SUPPORT SUITABILITY INDICATOR
FIRST ANTIRETROVIRAL THERAPY IN THE UNITED KINGDOM INDICATOR
FIRST ATTENDANCE
FURTHER ASSESSMENT TYPE FOR NHS HEALTH CHECK
INFORMATION AND ADVICE PROVIDED INDICATOR
INFORMATION AND ADVICE TYPE PROVIDED FOR NHS HEALTH CHECK
INITIAL CONTACT
INITIAL DIAGNOSIS CARE SETTING FOR HIV
IUD APPLICATION DATE
~~MATERNITY MEDICAL SERVICE TYPE~~
MATERNITY VISIT CALL REASON
MEDICAL STAFF TYPE SEEING PATIENT
METASTATIC STATUS
MULTIPROFESSIONAL OR MULTIDISCIPLINARY INDICATION CODE
NEW HIV DIAGNOSIS IN UNITED KINGDOM INDICATOR
OUTCOME OF ATTENDANCE
OUTCOME OF ATTENDANCE FOR CHILDREN AND YOUNG PEOPLES HEALTH SERVICE SECONDARY USES

PATIENT EXPOSURE TO HIV
PATIENT HIV CARE STATUS
PATIENT INFORMED OF OUTCOME DATE
PATIENT TRIAL STATUS FOR CANCER
PAYMENT FROM PATIENT RECEIVED
POST AND/OR PRE EXPOSURE PROPHYLAXIS CODE
POSTNATAL CARE INDICATOR
PREGNANCY INDICATOR FOR HIV
PSYCHIATRIC CARE INDICATOR FOR HIV
SETTLED ACCOMMODATION INDICATOR
SIGNPOSTING TO SERVICE INDICATOR
SIGNPOSTING TO SERVICE TYPE FOR NHS HEALTH CHECK
SKIN TO SKIN CONTACT INDICATOR
SOCIAL WORKER CARE INDICATOR FOR HIV
STATUTORY ASSESSMENT TYPE
SUBJECTIVE GLOBAL ASSESSMENT
~~SURVEILLANCE RESULT~~
THERAPY TYPE FOR IMPROVING ACCESS TO PSYCHOLOGICAL THERAPIES
TWO YEAR NEONATAL OUTCOMES ASSESSMENT NOT CARRIED OUT REASON

CLINICAL INTERVENTION

Change to Class: Changed Attributes

Attributes of this Class are:

ABDOMINAL XRAY PERFORMED REASON
ABDOMINAL XRAY PERFORMED TO INVESTIGATE ABDOMINAL SIGNS INDICATOR
ABLATIVE THERAPY TYPE
ACCIDENT AND EMERGENCY INVESTIGATION
ACCIDENT AND EMERGENCY TREATMENT
ANAESTHESIA TYPE IN LABOUR AND DELIVERY
ANAESTHETIC METHOD TYPE FOR DIALYSIS ACCESS CONSTRUCTION
ANAESTHETIC TYPE FOR JOINT REPLACEMENT
ANTI CANCER REGIMEN NUMBER
ARTERIOVENOUS GRAFT MATERIAL TYPE
ARTIFICIAL RUPTURE OF MEMBRANES REASON CODE
ASA PHYSICAL STATUS CLASSIFICATION SYSTEM CODE
ASSOCIATED PROCEDURE TYPE FOR ANKLE REPLACEMENT
BILIARY STENT INSERTION REASON
BIOLOGICAL RESURFACING TYPE
BLOOD FLOW RATE
BLOOD TRANSFUSION PRODUCT TYPE
BLOOD TRANSFUSION TYPE
BLOOD TRANSFUSION UNITS TRANSFUSED
BONEGRAFT INDICATOR FOR JOINT REPLACEMENT
BONEGRAFT INDICATOR FOR REVISION ANKLE REPLACEMENT
BONEGRAFT TYPE FOR JOINT REPLACEMENT
BRACHYTHERAPY TYPE
BREAST ASSESSMENT OUTCOME
BREAST SCREENING TEST OUTCOME
CANCER IMAGING MODALITY
CANCER TREATMENT MODALITY
CHEMICAL THROMBO PROPHYLAXIS REGIME TYPE
CHEMO RADIATION INDICATOR

CHEMOTHERAPY ACTUAL DOSE
CHEST DRAIN IN SITU INDICATOR
CLINICAL INTERVENTION TYPE
CLINICAL INVESTIGATION NOT PERFORMED REASON CODE FOR MATERNITY
CO MORBIDITY ADJUSTMENT INDICATOR
COMPLICATION TYPE FOR RENAL DIALYSIS ACCESS
COMPONENT REMOVAL INDICATOR
CONTINUOUS INFUSION OF PULMONARY VASODILATOR RECEIVED INDICATOR
CONTINUOUS POSITIVE AIRWAY PRESSURE DELIVERY MODE
CONTRACEPTION METHOD STATUS
CYTOLOGY SCREENING ACTION TYPE
DELIVERED IN WATER INDICATOR
DELIVERY INSTRUMENT TYPE
DELIVERY OF PLACENTA METHOD
DRUG ADMINISTRATION DURATION
DRUG ADMINISTRATION STATUS
DRUG DAYS SUPPLY
DRUG DOSAGE AND ADMIN SPECIFICATION
DRUG IDENTIFICATION
DRUG INFORMATION COMMENT
DRUG INFORMATION TYPE
DRUG QUANTITY SUPPLIED
DRUG REGIMEN ACRONYM
DRUG TREATMENT COST
DRUG TREATMENT INTENT
ENDOSCOPIC OR RADIOLOGICAL COMPLICATION TYPE
ENDOSCOPIC PROCEDURE TYPE
ENTERAL FEEDING METHOD
ENTERAL FEED TYPE GIVEN
EPISIOTOMY PERFORMED REASON CODE
EXCISION TYPE
FETAL ORDER
FIRST DEFINITIVE TREATMENT PROVIDED
FIRST DIAGNOSTIC TEST
FIXATION TYPE FOR ELBOW OR SHOULDER REPLACEMENT
FORMULA MILK OR MILK FORTIFIER TYPE
FRACTION NUMBER
HIP SURGERY PATIENT POSITION
IMAGE GUIDED SURGERY INDICATOR
IMAGING ANATOMICAL SITE
IMAGING INTERVENTION INDICATOR
IMAGING MODALITY
IMAGING OR RADIODIAGNOSTIC EVENT INDICATION CODE FOR RENAL CARE
IMMUNITY TEST RESULT
INFECTION CULTURE TEST INDICATOR
INTERVENTION SESSION TYPE
INTRAPARTUM ANTIBIOTICS GIVEN INDICATOR
JOINT REPLACEMENT REVISION REASON CODE FOR ANKLE
JOINT REPLACEMENT REVISION REASON CODE FOR ELBOW
JOINT REPLACEMENT REVISION REASON CODE FOR HIP
JOINT REPLACEMENT REVISION REASON CODE FOR KNEE
JOINT REPLACEMENT REVISION REASON CODE FOR SHOULDER
KIDNEY TRANSPLANTED CODE
LABOUR FIRST STAGE LENGTH

LABOUR OR DELIVERY ONSET METHOD
LABOUR PROFESSIONAL PRIOR INVOLVEMENT
LABOUR SECOND STAGE LENGTH
LAPAROTOMY FOR NECROTISING ENTEROCOLITIS INDICATION CODE
LONG HEAD BICEPS TENOTOMY INDICATOR
MARGIN INVOLVED INDICATION CODE
MATERNAL CRITICAL INCIDENT TYPE CODE
MECHANICAL THROMBO PROPHYLAXIS REGIME TYPE
MINIMALLY INVASIVE SURGERY INDICATOR
MINOR SURGERY TYPE
MORE THAN THREE RECTAL WASHOUTS RECEIVED INDICATOR
NATURE OF RISK AREA CODE
NEOADJUVANT THERAPY INDICATOR
NEONATAL CRITICAL INCIDENT TYPE CODE
NEONATAL RESUSCITATION METHOD
NEONATAL RESUSCITATION METHOD FOR NATIONAL NEONATAL DATA SET
NEPHRECTOMY TYPE
NEURODEVELOPMENTAL ASSESSMENT ALREADY TAKEN INDICATOR
NEWBORN HEARING INCOMPLETE REASON CODE
NEWBORN HEARING SCREENING TEST TYPE
NITRIC OXIDE GIVEN INDICATOR
NUMBER OF TELETHERAPY FIELDS
OPERATIVE PROCEDURE INDICATOR
OPPORTUNISTIC SCREENING TYPE
PAIN RELIEF TYPE IN LABOUR AND DELIVERY
PARENTAL CONSENT TO ADMINISTER VITAMIN K INDICATOR
PARENTAL CONSENT TO POST MORTEM INDICATOR
PARENTERAL NUTRITION RECEIVED INDICATOR
PATHOLOGY INVESTIGATION PRIORITY
PATHOLOGY RESULT REPORTED DATE
PATIENT PROCEDURE PERFORMED INDICATOR
PATIENT PROCEDURE TYPE FOR PRIMARY ANKLE REPLACEMENT
PATIENT PROCEDURE TYPE FOR PRIMARY ELBOW REPLACEMENT
PATIENT PROCEDURE TYPE FOR PRIMARY HIP REPLACEMENT
PATIENT PROCEDURE TYPE FOR PRIMARY KNEE REPLACEMENT
PATIENT PROCEDURE TYPE FOR PRIMARY SHOULDER REPLACEMENT
PATIENT PROCEDURE TYPE FOR REVISION ANKLE REPLACEMENT
PATIENT PROCEDURE TYPE FOR REVISION ELBOW REPLACEMENT
PATIENT PROCEDURE TYPE FOR REVISION HIP REPLACEMENT
PATIENT PROCEDURE TYPE FOR REVISION KNEE REPLACEMENT
PATIENT PROCEDURE TYPE FOR REVISION SHOULDER REPLACEMENT
PERFORATIONS OR SEROSAL INVOLVEMENT INDICATION CODE
PERITONEAL DIALYSIS CATHETER INSERTION TECHNIQUE
PERITONEAL DIALYSIS CATHETER TYPE
PLANE OF SURGICAL EXCISION TYPE
PLANNED TREATMENT CHANGE REASON
POST MORTEM CARRIED OUT INDICATOR
POST MORTEM CONFIRMED NECROTISING ENTEROCOLITIS DIAGNOSIS INDICATOR
POST MORTEM TYPE
PREVIOUS BONY INFECTION INDICATOR OF TIBIA OR HINDFOOT
PREVIOUS FRACTURE INDICATOR FOR ANKLE REPLACEMENT
PREVIOUS SURGERY TYPE FOR ANKLE JOINT
PREVIOUS SURGERY TYPE FOR SHOULDER REPLACEMENT
PRIMARY SCREENING

PRINCIPAL DIAGNOSTIC IMAGING TYPE
PROCEDURE RENAL DIALYSIS ACCESS REPAIR OR REVISION TYPE
PROCEDURE SIDE RENAL DIALYSIS ACCESS CONSTRUCTION CODE
PROCEDURE SITE RENAL DIALYSIS ACCESS CONSTRUCTION CODE
RADIOISOTOPE
RADIOLOGICAL PROCEDURE TYPE
RADIOTHERAPY ACTUAL DOSE
RADIOTHERAPY BEAM TYPE
RADIOTHERAPY PRESCRIBED DOSE
RADIOTHERAPY TREATMENT MODALITY
REMOVAL REASON TYPE FOR DIALYSIS ACCESS
RENAL DIALYSIS ACCESS TYPE
RENAL TRANSPLANT FAILURE CAUSE CODE
REPLOGLE TUBE IN SITU INDICATOR
RESPIRATORY SUPPORT DEVICE TYPE FOR NATIONAL NEONATAL DATA SET
RESPIRATORY SUPPORT MODE FOR NATIONAL NEONATAL DATA SET
RESULT SENT DIRECT
RETINOPATHY OF PREMATUREITY SCREENING OUTCOME STATUS CODE
REVISION PROCEDURE TYPE FOR ANKLE OR KNEE REPLACEMENT
REVISION PROCEDURE TYPE FOR ELBOW OR SHOULDER REPLACEMENT
REVISION PROCEDURE TYPE FOR HIP REPLACEMENT
ROTATOR CUFF CONDITION
ROUTINE OR EMERGENCY
RUPTURE OF MEMBRANES METHOD
SARCOMA SURGICAL MARGIN
SCHEDULED SESSION DURING OR OUTSIDE
SENTINEL LYMPH NODE BIOPSY TYPE
SIGNIFICANT MATERNAL PYREXIA IN LABOUR INDICATOR
STEM CELL INFUSION DONOR TYPE
STEM CELL INFUSION SOURCE CODE
STENT DEPLOYED SUCCESS INDICATOR
STEROIDS GIVEN DURING PREGNANCY TO MATURE FETAL LUNGS INDICATOR
STOMA PRESENT INDICATOR
SURGICAL ACCESS TYPE
SURGICAL ACCESS TYPE FOR THORACIC
SURGICAL APPROACH FOR PRIMARY HIP REPLACEMENT
SURGICAL APPROACH FOR PRIMARY KNEE REPLACEMENT
SURGICAL APPROACH FOR PRIMARY OR REVISION ANKLE REPLACEMENT
SURGICAL APPROACH FOR PRIMARY OR REVISION SHOULDER REPLACEMENT
SURGICAL APPROACH FOR REVISION HIP REPLACEMENT
SURGICAL APPROACH FOR REVISION KNEE REPLACEMENT
SURGICAL COMPLICATION TYPE
SURGICAL DEFAULT TECHNIQUE INDICATOR
SURGICAL PALLIATION TYPE
SURGICAL VOICE RESTORATION PERMANENT VALVE REMOVAL REASON
SYSTEMIC ANTI CANCER THERAPY DRUG ROUTE OF ADMINISTRATION
SYSTEMIC ANTI CANCER THERAPY PROGRAMME NUMBER
SYSTEMIC ANTI CANCER THERAPY REGIMEN MODIFICATION INDICATOR
TELEOTHERAPY BEAM TYPE
TELEOTHERAPY ELECTRON ENERGY
TELEOTHERAPY PHOTON ENERGY
TRACHEOSTOMY TUBE IN SITU INDICATOR
TREATMENT TYPE FOR NECROTISING ENTEROCOLITIS
TREATMENT TYPE FOR PATENT DUCTUS ARTERIOSUS

UNPLANNED OPERATION INDICATOR
UNTOWARD INTRAOPERATIVE EVENT CODE FOR ANKLE REPLACEMENT
UNTOWARD INTRAOPERATIVE EVENT CODE FOR ELBOW REPLACEMENT
UNTOWARD INTRAOPERATIVE EVENT CODE FOR HIP REPLACEMENT
UNTOWARD INTRAOPERATIVE EVENT CODE FOR KNEE REPLACEMENT
UNTOWARD INTRAOPERATIVE EVENT CODE FOR SHOULDER REPLACEMENT
~~VACCINATION REASON INDICATOR~~
VASCULAR LINE TYPE IN SITU
VISUAL INSPECTION CONFIRMED NECROTISING ENTEROCOLITIS DURING LAPAROTOMY INDICATOR
VITAMIN K ADMINISTERED INDICATOR
VITAMIN K ROUTE OF ADMINISTRATION

NHS SERVICE AGREEMENT

Change to Class: Changed Attributes

Attributes of this Class are:

K NHS SERVICE AGREEMENT NUMBER
~~NHS SERVICE AGREEMENT END DATE~~
~~NHS SERVICE AGREEMENT START DATE~~

NHS SERVICE AGREEMENT LINE

Change to Class: Changed Attributes

Attributes of this Class are:

K NHS SERVICE AGREEMENT LINE NUMBER
~~NHS SERVICE AGREEMENT LINE END DATE~~
~~NHS SERVICE AGREEMENT LINE START DATE~~

ORGAN DONATION CONSENT (RETIRED)_ renamed from ORGAN DONATION CONSENT

Change to Class: Changed Description, status to Retired, Name, Attributes, Supertype

A subtype of [PERSON PROPERTY](#). **This item has been retired from the NHS Data Model and Dictionary.**

A record that a [PERSON](#) has consented to be added to the NHS Organ Donor Register for a particular [ORGAN DONATION TYPE](#) of [PERSON ORGANS](#) and [TISSUES](#) to be used for transplantation after their death. **The last live version of this item is available in the February 2014 release of the NHS Data Model and Dictionary.**

The [PERSON](#) may make a single or multiple choice of [PERSON ORGANS](#) to be donated, in the latter case they will have multiple [ORGAN DONATION CONSENTS](#). **Access to this version can be obtained by emailing information.standards@hscic.gov.uk with "NHS Data Model and Dictionary - Archive Request" in the email subject line.**

ORGAN DONATION CONSENT (RETIRED)_ renamed from ORGAN DONATION CONSENT

Change to Class: Changed Description, status to Retired, Name, Attributes, Supertype

Attributes of this Class are:

~~ORGAN DONATION TYPE~~

This class has no attributes.

ORGAN DONATION CONSENT (RETIRED)_ renamed from ORGAN DONATION CONSENT

Change to Class: Changed Description, status to Retired, Name, Attributes, Supertype

- Changed Description
- Retired ORGAN DONATION CONSENT
- Changed Name from Data_Dictionary.Classes.O.ORGAN_DONATION_CONSENT to Retired.Data_Dictionary.Classes.O.ORGAN_DONATION_CONSENT
- Changed Attributes
- Changed Supertype from Data_Dictionary.Classes.P.PERSON_PROPERTY to null

ORGAN OR TISSUE DONOR

Change to Class: Changed Relationships

Each ORGAN OR TISSUE DONOR

- K must be from one and only one PERSON
- ~~may be consented by one or more ORGAN DONATION CONSENT~~
- may be subject to one or more ORGAN OR TISSUE DONOR OBSERVATION

PATIENT

Change to Class: Changed Attributes

Attributes of this Class are:

CARER PERMISSION DATE
CARER SUPPORT INDICATOR
~~CHRONICALLY SICK OR DISABLED~~
COMMUNITY HEALTH INDEX NUMBER
DRUG MISUSE DATABASE NUMBER
DRUG MISUSER INJECTED EVER
DRUG MISUSER SHARED NEEDLE EVER
HEALTH AND CARE NUMBER
INJECTED IN LAST 4 WEEKS
LAST DISCHARGE DATE
NHS NUMBER
NHS NUMBER OLD
OVERSEAS VISITOR UK ARRIVAL DATE
REFUGEE OR STATELESS PERSON INDICATOR
RENAL REASON FOR NO TREATMENT CODE
RENAL REGISTRATION NUMBER
SCOTTISH RENAL REGISTRY NUMBER
SHARED NEEDLE OR SYRINGE IN LAST 4 WEEKS
YEAR OF FIRST KNOWN PSYCHIATRIC CARE

PERSON PROPERTY

Change to Class: Changed Description

A [PERSON PROPERTY](#) is a condition or state associated with a [PERSON](#).

[PERSON PROPERTIES](#) are collected as a result of an [ACTIVITY](#).

[PERSON PROPERTIES](#) for a [PATIENT](#) do not include information about a treatment or intervention.

- The [PERSON PROPERTY](#) may be a clinical diagnosis
- The observer of a [PERSON PROPERTY](#) may be a related [PERSON](#) or a [CARE PROFESSIONAL](#)
[PERSON PROPERTIES](#) may be recorded during, or as a result of, a course of treatment.

Subtypes of [PERSON PROPERTY](#) include:

- [CANCER STAGING](#)
- [CATEGORY VALUED PERSON OBSERVATION](#)
- [DIABETES ROUTINE REVIEW RESULT](#)
- [EDUCATION](#)
- [EDUCATIONAL ASSESSMENT](#)
- [EMPLOYMENT](#)
- [NHS CONTINUING HEALTHCARE](#)
- [NHS FUNDED NURSING CARE](#)
- ~~[ORGAN DONATION CONSENT](#)~~
- ~~[ORGAN OR TISSUE DONOR OBSERVATION](#)~~
- [ORGAN OR TISSUE DONOR OBSERVATION](#)
- [OTHER PERSON OBSERVATION](#)
- [PATIENT DIAGNOSIS](#)
- [PERSON SCORE](#)
- [SAFEGUARDING CHILDREN OBSERVATION](#)
- [TEXT VALUED PERSON OBSERVATION](#)
- [TOBACCO USAGE](#)

PLANNED SERVICE UNDER AGREEMENT (RETIRED)_ renamed from PLANNED SERVICE UNDER AGREEMENT

Change to Class: Changed Description, status to Retired, Name, Relationships, Attributes

~~A service or delivery of patient care planned to be provided under an [NHS SERVICE AGREEMENT](#). This holds a breakdown of the patient care planned to be delivered across [NHS SERVICE AGREEMENTS](#). This item has been retired from the NHS Data Model and Dictionary.~~

The last live version of this item is available in the February 2014 release of the NHS Data Model and Dictionary.

Access to this version can be obtained by emailing information.standards@hscic.gov.uk with "NHS Data Model and Dictionary - Archive Request" in the email subject line.

PLANNED SERVICE UNDER AGREEMENT (RETIRED)_ renamed from PLANNED SERVICE UNDER AGREEMENT

Change to Class: Changed Description, status to Retired, Name, Relationships, Attributes

Attributes of this Class are:

⌕ ~~PLANNED SERVICE UNDER AGREEMENT START DATE~~
~~PLANNED SERVICE UNDER AGREEMENT END DATE~~

This class has no attributes.

PLANNED SERVICE UNDER AGREEMENT (RETIRED)_ renamed from PLANNED SERVICE UNDER AGREEMENT

Change to Class: Changed Description, status to Retired, Name, Relationships, Attributes

Each PLANNED SERVICE UNDER AGREEMENT

~~✦ must be provided as part of one and only one NHS SERVICE AGREEMENT
may be agreement for one and only one PLANNED SERVICE~~

PLANNED SERVICE UNDER AGREEMENT (RETIRED)_ renamed from PLANNED SERVICE UNDER AGREEMENT

Change to Class: Changed Description, status to Retired, Name, Relationships, Attributes

- Changed Description
 - Retired PLANNED SERVICE UNDER AGREEMENT
 - Changed Name from Data_Dictionary.Classes.P.PLANNED_SERVICE_UNDER_AGREEMENT to Retired.Data_Dictionary.Classes.P.PLANNED_SERVICE_UNDER_AGREEMENT
 - Changed Relationships
 - Changed Attributes
-

REFERRAL REQUEST

Change to Class: Changed Attributes

Attributes of this Class are:

BENIGN THERAPEUTIC OPERATION INDICATOR
COLPOSCOPY REFERRAL INDICATION
COMMISSIONER REFERENCE NUMBER
OTHER REFERRER CODE
OUT-PATIENT CLINIC REFERRING INDICATOR
REASON FOR REFERRAL TO COMMUNITY CARE
REFERRAL CLOSURE REASON FOR COMMUNITY CARE
REFERRAL REQUEST ACCEPTANCE INDICATOR
REFERRAL REQUEST RECEIVED TIME
REFERRAL REQUEST SERVICE TYPE FOR NHS HEALTH CHECK
REFERRAL REQUEST TYPE
SCREENING REFERRAL SOURCE
SERVICE TYPE REQUESTED
SERVICE TYPE REQUESTED FOR CHILD AND ADOLESCENT MENTAL HEALTH
SOURCE OF REFERRAL FOR A and E
SOURCE OF REFERRAL FOR COMMUNITY
~~SOURCE OF REFERRAL FOR DRUG MISUSE~~
SOURCE OF REFERRAL FOR MENTAL HEALTH
SOURCE OF REFERRAL FOR OUT-PATIENTS
SOURCE OF REFERRAL FOR PROF STAFF GROUP
TWO WEEK WAIT CANCER OR SYMPTOMATIC BREAST REFERRAL TYPE
TWO WEEK WAIT EXCLUSION INDICATOR

SERVICE PROVIDED UNDER AGREEMENT

Change to Class: Changed Attributes

Attributes of this Class are:

⌘ ~~SERVICE PROVIDED UNDER AGREEMENT START DATE~~
~~SERVICE PROVIDED UNDER AGREEMENT END DATE~~

This class has no attributes.

SUBSTANCE MISUSED ROUTE (RETIRED)_ renamed from SUBSTANCE MISUSED ROUTE

Change to Class: Changed Description, status to Retired, Name, Relationships, Attributes

The classification of the means by which the [SUBSTANCE MISUSED](#) is taken by the [Drug Misuser](#). This item has been retired from the NHS Data Model and Dictionary.

The last live version of this item is available in the February 2014 release of the NHS Data Model and Dictionary.

Access to this version can be obtained by emailing information.standards@hscic.gov.uk with "NHS Data Model and Dictionary - Archive Request" in the email subject line.

SUBSTANCE MISUSED ROUTE (RETIRED)_ renamed from SUBSTANCE MISUSED ROUTE

Change to Class: Changed Description, status to Retired, Name, Relationships, Attributes

Attributes of this Class are:

⌘ ~~SUBSTANCE MISUSED ROUTE CODE~~

This class has no attributes.

SUBSTANCE MISUSED ROUTE (RETIRED)_ renamed from SUBSTANCE MISUSED ROUTE

Change to Class: Changed Description, status to Retired, Name, Relationships, Attributes

Each SUBSTANCE MISUSED ROUTE

⌘ ~~must be the method for one and only one SUBSTANCE MISUSED~~

SUBSTANCE MISUSED ROUTE (RETIRED)_ renamed from SUBSTANCE MISUSED ROUTE

Change to Class: Changed Description, status to Retired, Name, Relationships, Attributes

- Changed Description
- Retired SUBSTANCE MISUSED ROUTE
- Changed Name from `Data_Dictionary.Classes.S.SUBSTANCE_MISUSED_ROUTE` to `Retired.Data_Dictionary.Classes.S.SUBSTANCE_MISUSED_ROUTE`
- Changed Relationships
- Changed Attributes

CARE CONTACT TYPE

Change to Attribute: Changed Description

The type of [CARE CONTACT](#).

National Codes:

01 [Accident and Emergency Attendance](#)

- 02 [Acute Home-Based Contact](#)
- 03 [Audiology Attendance](#)
- 04 [Cancer Clinical Status Assessment](#)
- 05 [Care Programme Approach Review](#)
- 06 [Clinic Attendance Consultant](#)
- 07 [Clinic Attendance Sexual and Reproductive Health Service](#)
- 08 [Clinic Attendance Midwife](#)
- 09 [Clinic Attendance Non-Consultant](#)
- 10 [Clinic Attendance Nurse](#)
- 11 [Contact Tracing Activity](#)
- 12 Dental Treatment Contact (Retired 01 April 2014)
- 13 [Day Care Attendance](#)
- 14 [Domiciliary Consultation](#)
- 15 Emergency Dental Attendance (Retired 01 April 2014)
- 16 [Face To Face Contact Community Care](#)
- 17 [Face To Face Contact CPA Care Coordinator](#)
- 18 Face To Face Contact Dental (Retired 01 April 2014)
- 19 Face To Face Contact Optical (Retired 01 April 2014)
- 20 Face To Face Contact Social Worker (Retired 01 April 2011)
- 21 [Face To Face Contact Surveillance](#)
- 21 [Face To Face Contact Surveillance \(Retired 01 April 2014\)](#)
- 22 [Sexual and Reproductive Health Domiciliary Visit](#)
- 23 [Genitourinary Consultant Clinic Attendance](#)
- 24 GMP Consultation (Retired 01 April 2014)
- 25 GMP Practice Consultation (Retired 01 April 2014)
- 26 [Home Assessment Visit](#)
- 27 [Maternity Domiciliary Visit](#)
- 28 Night Consultation Visit (Retired 01 April 2014)
- 29 [Nurse or Midwife Contact](#)
- 30 [Out-Patient Attendance Consultant](#)
- 31 Registration Health Check (Retired 01 April 2014)
- 32 Sheltered Work Attendance (Retired 01 April 2011)
- 33 Sight Test (Retired 01 April 2014)
- 34 [Social Services Statutory Assessment](#)
- 35 Professional Advice And Support Contact (Retired 01 April 2014)
- 36 [Professional Staff Group Contact](#)
- 37 Telephone Contact NHS Direct (Mental Health) (Retired 01 April 2011)
- 38 [Theatre Case](#)
- 39 [Ward Attendance](#)
- 40 Genitourinary Care Contact (Retired January 2014)
- 41 [Improving Access to Psychological Therapies Contact](#)
- 42 [NHS Health Check Assessment](#)
- 43 [Antenatal Booking Appointment](#)
- 44 [Pregnancy First Contact](#)
- 45 [Nutritional Assessment](#)
- 46 [HIV Clinic Attendance](#)
- 47 [Multi-Disciplinary Consultation \(Payment By Results\)](#)
- 48 [Multi-Professional Consultation \(Payment By Results\)](#)
- 49 [Two Year Neonatal Outcomes Assessment](#)
- 50 [Radiotherapy Attendance](#)

Note: The list is not in alphabetical order.

CHRONICALLY SICK OR DISABLED (RETIRED)_ renamed from CHRONICALLY SICK OR DISABLED

Change to Attribute: Changed Description, status to Retired, Name

An indication of whether or not a [PATIENT](#) is chronically sick or disabled. This includes a [PATIENT](#) who is blind, deaf or dumb or permanently handicapped by illness, injury or congenital deformity. **This item has been retired from the NHS Data Model and Dictionary.**

Classification: **The last live version of this item is available in the February 2014 release of the NHS Data Model and Dictionary.**

- a. Yes
- b. No

References:

~~National Assistance Act, 1948, section 29.~~ **Access to this version can be obtained by emailing information.standards@hscic.gov.uk with "NHS Data Model and Dictionary - Archive Request" in the email subject line.**

CHRONICALLY SICK OR DISABLED (RETIRED)_ renamed from CHRONICALLY SICK OR DISABLED

Change to Attribute: Changed Description, status to Retired, Name

- Changed Description
- Retired CHRONICALLY SICK OR DISABLED
- Changed Name from Data_Dictionary.Attributes.C.Gen.CHRONICALLY_SICK_OR_DISABLED to Retired.Data_Dictionary.Attributes.C.CHRONICALLY_SICK_OR_DISABLED

MATERNITY MEDICAL SERVICE TYPE (RETIRED)_ renamed from MATERNITY MEDICAL SERVICE TYPE

Change to Attribute: Changed Description, status to Retired, Name

The type of maternity medical service delivered to a [PATIENT](#) by a [GENERAL MEDICAL PRACTITIONER](#). **This item has been retired from the NHS Data Model and Dictionary.**

Classification: **The last live version of this item is available in the February 2014 release of the NHS Data Model and Dictionary.**

- a. Complete maternity medical service
- b. Ante-natal care booking up to 16th week of pregnancy
- c. Ante-natal care booking from 17th to 30th week of pregnancy
- d. Ante-natal care booking from 31st week of pregnancy
- e. Miscarriage
- f. Care during confinement
- g. Complete post-natal care
- h. Partial post-natal care, attendance to a maximum of 5 attendances
- i. Partial post-natal care, full post-natal examination
- j. Second General Medical Practitioner called in to give anaesthetic

Access to this version can be obtained by emailing information.standards@hscic.gov.uk with "NHS Data Model and Dictionary - Archive Request" in the email subject line.

MATERNITY MEDICAL SERVICE TYPE (RETIRED)_ renamed from MATERNITY MEDICAL SERVICE TYPE

Change to Attribute: Changed Description, status to Retired, Name

- Changed Description
 - Retired MATERNITY MEDICAL SERVICE TYPE
 - Changed Name from Data_Dictionary.Attributes.M.MATERNITY_MEDICAL_SERVICE_TYPE to Retired.Data_Dictionary.Attributes.M.MATERNITY_MEDICAL_SERVICE_TYPE
-

NHS SERVICE AGREEMENT END DATE (RETIRED)_ renamed from NHS SERVICE AGREEMENT END DATE

Change to Attribute: Changed Description, status to Retired, Name

The end date of an [NHS SERVICE AGREEMENT](#). This item has been retired from the NHS Data Model and Dictionary.

The last live version of this item is available in the February 2014 release of the NHS Data Model and Dictionary.

Access to this version can be obtained by emailing information.standards@hscic.gov.uk with "NHS Data Model and Dictionary - Archive Request" in the email subject line.

NHS SERVICE AGREEMENT END DATE (RETIRED)_ renamed from NHS SERVICE AGREEMENT END DATE

Change to Attribute: Changed Description, status to Retired, Name

- Changed Description
 - Retired NHS SERVICE AGREEMENT END DATE
 - Changed Name from Data_Dictionary.Attributes.N.NHS.NHS_SERVICE_AGREEMENT_END_DATE to Retired.Data_Dictionary.Attributes.N.NHS_SERVICE_AGREEMENT_END_DATE
-

NHS SERVICE AGREEMENT LINE END DATE (RETIRED)_ renamed from NHS SERVICE AGREEMENT LINE END DATE

Change to Attribute: Changed Description, status to Retired, Name

The end date for a [NHS SERVICE AGREEMENT LINE](#) within a [NHS SERVICE AGREEMENT](#). This item has been retired from the NHS Data Model and Dictionary.

The last live version of this item is available in the February 2014 release of the NHS Data Model and Dictionary.

Access to this version can be obtained by emailing information.standards@hscic.gov.uk with "NHS Data Model and Dictionary - Archive Request" in the email subject line.

NHS SERVICE AGREEMENT LINE END DATE (RETIRED)_ renamed from NHS SERVICE AGREEMENT LINE END DATE

Change to Attribute: Changed Description, status to Retired, Name

- Changed Description
- Retired NHS SERVICE AGREEMENT LINE END DATE
- Changed Name from Data_Dictionary.Attributes.N.NHS.NHS_SERVICE_AGREEMENT_LINE_END_DATE to Retired.Data_Dictionary.Attributes.N.NHS_SERVICE_AGREEMENT_LINE_END_DATE

NHS SERVICE AGREEMENT LINE START DATE (RETIRED)_ renamed from NHS SERVICE AGREEMENT LINE START DATE

Change to Attribute: Changed Description, status to Retired, Name

~~The start date for a [NHS SERVICE AGREEMENT LINE](#) within a [NHS SERVICE AGREEMENT LINE](#).~~ **This item has been retired from the NHS Data Model and Dictionary.**

The last live version of this item is available in the February 2014 release of the NHS Data Model and Dictionary.

Access to this version can be obtained by emailing information.standards@hscic.gov.uk with "NHS Data Model and Dictionary - Archive Request" in the email subject line.

NHS SERVICE AGREEMENT LINE START DATE (RETIRED)_ renamed from NHS SERVICE AGREEMENT LINE START DATE

Change to Attribute: Changed Description, status to Retired, Name

- Changed Description
- Retired NHS SERVICE AGREEMENT LINE START DATE
- Changed Name from Data_Dictionary.Attributes.N.NHS.NHS_SERVICE_AGREEMENT_LINE_START_DATE to Retired.Data_Dictionary.Attributes.N.NHS_SERVICE_AGREEMENT_LINE_START_DATE

NHS SERVICE AGREEMENT START DATE (RETIRED)_ renamed from NHS SERVICE AGREEMENT START DATE

Change to Attribute: Changed Description, status to Retired, Name

~~The start date of an [NHS SERVICE AGREEMENT](#).~~ **This item has been retired from the NHS Data Model and Dictionary.**

The last live version of this item is available in the February 2014 release of the NHS Data Model and Dictionary.

Access to this version can be obtained by emailing information.standards@hscic.gov.uk with "NHS Data Model and Dictionary - Archive Request" in the email subject line.

NHS SERVICE AGREEMENT START DATE (RETIRED)_ renamed from NHS SERVICE AGREEMENT START DATE

Change to Attribute: Changed Description, status to Retired, Name

- Changed Description
- Retired NHS SERVICE AGREEMENT START DATE
- Changed Name from Data_Dictionary.Attributes.N.NHS.NHS_SERVICE_AGREEMENT_START_DATE to Retired.Data_Dictionary.Attributes.N.NHS_SERVICE_AGREEMENT_START_DATE

ORGAN DONATION TYPE (RETIRED)_ renamed from ORGAN DONATION TYPE

Change to Attribute: Changed Description, status to Retired, Name

The body parts that a [PERSON](#) may consent to be used for possible transplantation after their death. **This item has been retired from the NHS Data Model and Dictionary.**

Classification: **The last live version of this item is available in the February 2014 release of the NHS Data Model and Dictionary.**

- a. Kidneys
- b. Heart
- c. Liver
- d. Corneas
- e. Lungs
- f. Pancreas
- g. Any other [PERSON ORGAN](#) or [TISSUE](#)

Access to this version can be obtained by emailing information.standards@hscic.gov.uk with "NHS Data Model and Dictionary - Archive Request" in the email subject line.

ORGAN DONATION TYPE (RETIRED)_ renamed from ORGAN DONATION TYPE

Change to Attribute: Changed Description, status to Retired, Name

- Changed Description
 - Retired ORGAN DONATION TYPE
 - Changed Name from `Data_Dictionary.Attributes.O.Org.ORGAN_DONATION_TYPE` to `Retired.Data_Dictionary.Attributes.O.ORGAN_DONATION_TYPE`
-

PLANNED SERVICE UNDER AGREEMENT END DATE (RETIRED)_ renamed from PLANNED SERVICE UNDER AGREEMENT END DATE

Change to Attribute: Changed Description, status to Retired, Name

The end date of a [PLANNED SERVICE UNDER AGREEMENT](#). **This item has been retired from the NHS Data Model and Dictionary.**

The last live version of this item is available in the February 2014 release of the NHS Data Model and Dictionary.

Access to this version can be obtained by emailing information.standards@hscic.gov.uk with "NHS Data Model and Dictionary - Archive Request" in the email subject line.

PLANNED SERVICE UNDER AGREEMENT END DATE (RETIRED)_ renamed from PLANNED SERVICE UNDER AGREEMENT END DATE

Change to Attribute: Changed Description, status to Retired, Name

- Changed Description
- Retired PLANNED SERVICE UNDER AGREEMENT END DATE
- Changed Name from

Data_Dictionary.Attributes.P.Pha.PLANNED_SERVICE_UNDER_AGREEMENT_END_DATE to
Retired.Data_Dictionary.Attributes.P.PLANNED_SERVICE_UNDER_AGREEMENT_END_DATE

**PLANNED SERVICE UNDER AGREEMENT START DATE (RETIRED)__ renamed
from PLANNED SERVICE UNDER AGREEMENT START DATE**

Change to Attribute: Changed Description, status to Retired, Name

The start date of a [PLANNED SERVICE UNDER AGREEMENT](#). This item has been retired from the NHS Data Model and Dictionary.

The last live version of this item is available in the February 2014 release of the NHS Data Model and Dictionary.

Access to this version can be obtained by emailing information.standards@hscic.gov.uk with "NHS Data Model and Dictionary - Archive Request" in the email subject line.

**PLANNED SERVICE UNDER AGREEMENT START DATE (RETIRED)__ renamed
from PLANNED SERVICE UNDER AGREEMENT START DATE**

Change to Attribute: Changed Description, status to Retired, Name

- Changed Description
- Retired PLANNED SERVICE UNDER AGREEMENT START DATE
- Changed Name from
Data_Dictionary.Attributes.P.Pha.PLANNED_SERVICE_UNDER_AGREEMENT_START_DATE to
Retired.Data_Dictionary.Attributes.P.PLANNED_SERVICE_UNDER_AGREEMENT_START_DATE

**SERVICE PROVIDED UNDER AGREEMENT END DATE (RETIRED)__ renamed
from SERVICE PROVIDED UNDER AGREEMENT END DATE**

Change to Attribute: Changed Description, status to Retired, Name

The end date of a [SERVICE PROVIDED UNDER AGREEMENT](#). This item has been retired from the NHS Data Model and Dictionary.

The last live version of this item is available in the February 2014 release of the NHS Data Model and Dictionary.

Access to this version can be obtained by emailing information.standards@hscic.gov.uk with "NHS Data Model and Dictionary - Archive Request" in the email subject line.

**SERVICE PROVIDED UNDER AGREEMENT END DATE (RETIRED)__ renamed
from SERVICE PROVIDED UNDER AGREEMENT END DATE**

Change to Attribute: Changed Description, status to Retired, Name

- Changed Description
- Retired SERVICE PROVIDED UNDER AGREEMENT END DATE
- Changed Name from
Data_Dictionary.Attributes.S.Ser.SERVICE_PROVIDED_UNDER_AGREEMENT_END_DATE to
Retired.Data_Dictionary.Attributes.S.SERVICE_PROVIDED_UNDER_AGREEMENT_END_DATE

SERVICE PROVIDED UNDER AGREEMENT START DATE (RETIRED)__ renamed from SERVICE PROVIDED UNDER AGREEMENT START DATE

Change to Attribute: Changed Description, status to Retired, Name

The start date of a [SERVICE PROVIDED UNDER AGREEMENT](#). This item has been retired from the NHS Data Model and Dictionary.

The last live version of this item is available in the February 2014 release of the NHS Data Model and Dictionary.

Access to this version can be obtained by emailing information.standards@hscic.gov.uk with "NHS Data Model and Dictionary - Archive Request" in the email subject line.

SERVICE PROVIDED UNDER AGREEMENT START DATE (RETIRED)__ renamed from SERVICE PROVIDED UNDER AGREEMENT START DATE

Change to Attribute: Changed Description, status to Retired, Name

- Changed Description
- Retired SERVICE PROVIDED UNDER AGREEMENT START DATE
- Changed Name from Data_Dictionary.Attributes.S.Ser.SERVICE_PROVIDED_UNDER_AGREEMENT_START_DATE to Retired.Data_Dictionary.Attributes.S.SERVICE_PROVIDED_UNDER_AGREEMENT_START_DATE

SOURCE OF REFERRAL FOR DRUG MISUSE (RETIRED)_ renamed from SOURCE OF REFERRAL FOR DRUG MISUSE

Change to Attribute: Changed Description, status to Retired, Name

A classification which identifies the source of referral for each [Drug Misuse Episode](#). This item has been retired from the NHS Data Model and Dictionary.

Classification: The last live version of this item is available in the February 2014 release of the NHS Data Model and Dictionary.

- a. Self
- b. [GENERAL MEDICAL PRACTITIONER](#)/Psychiatrist
- c. Family/friend
- d. Probation
- e. Specialist Drug Agency
- f. Other

Access to this version can be obtained by emailing information.standards@hscic.gov.uk with "NHS Data Model and Dictionary - Archive Request" in the email subject line.

SOURCE OF REFERRAL FOR DRUG MISUSE (RETIRED)_ renamed from SOURCE OF REFERRAL FOR DRUG MISUSE

Change to Attribute: Changed Description, status to Retired, Name

- Changed Description

- Retired SOURCE OF REFERRAL FOR DRUG MISUSE
- Changed Name from Data_Dictionary.Attributes.S.Smo.SOURCE_OF_REFERRAL_FOR_DRUG_MISUSE to Retired.Data_Dictionary.Attributes.S.SOURCE_OF_REFERRAL_FOR_DRUG_MISUSE

SUBSTANCE MISUSED AGE AT FIRST USE (RETIRED)_ renamed from SUBSTANCE MISUSED AGE AT FIRST USE

Change to Attribute: Changed Description, status to Retired, Name

The age, in years, of the [PATIENT](#) when the [SUBSTANCE MISUSED](#) was first taken. **This item has been retired from the NHS Data Model and Dictionary.**

The last live version of this item is available in the February 2014 release of the NHS Data Model and Dictionary.

Access to this version can be obtained by emailing information.standards@hscic.gov.uk with "NHS Data Model and Dictionary - Archive Request" in the email subject line.

SUBSTANCE MISUSED AGE AT FIRST USE (RETIRED)_ renamed from SUBSTANCE MISUSED AGE AT FIRST USE

Change to Attribute: Changed Description, status to Retired, Name

- Changed Description
- Retired SUBSTANCE MISUSED AGE AT FIRST USE
- Changed Name from Data_Dictionary.Attributes.S.Stan.SUBSTANCE_MISUSED_AGE_AT_FIRST_USE to Retired.Data_Dictionary.Attributes.S.SUBSTANCE_MISUSED_AGE_AT_FIRST_USE

SUBSTANCE MISUSED ROUTE CODE (RETIRED)_ renamed from SUBSTANCE MISUSED ROUTE CODE

Change to Attribute: Changed Description, status to Retired, Name

A unique identifier of a [SUBSTANCE MISUSED ROUTE](#). **This item has been retired from the NHS Data Model and Dictionary.**

Classification: **The last live version of this item is available in the February 2014 release of the NHS Data Model and Dictionary.**

- a: Inject
- b: Smoke
- c: Oral
- d: Sniff/Snort
- e: Smoke and inject
- f: Sniff and smoke
- g: Inject and snort
- h: Oral and inject
- i: Inhale
- j: Oral and smoke
- k: Oral and snort
- t: Other

Access to this version can be obtained by emailing information.standards@hscic.gov.uk with "NHS Data Model and Dictionary - Archive Request" in the email subject line.

SUBSTANCE MISUSED ROUTE CODE (RETIRED)_ renamed from SUBSTANCE MISUSED ROUTE CODE

Change to Attribute: Changed Description, status to Retired, Name

- Changed Description
 - Retired SUBSTANCE MISUSED ROUTE CODE
 - Changed Name from Data_Dictionary.Attributes.S.Stan.SUBSTANCE_MISUSED_ROUTE_CODE to Retired.Data_Dictionary.Attributes.S.SUBSTANCE_MISUSED_ROUTE_CODE
-

SURVEILLANCE RESULT (RETIRED)_ renamed from SURVEILLANCE RESULT

Change to Attribute: Changed Description, status to Retired, Name

The outcome of a [Face To Face Contact Surveillance](#). This item has been retired from the NHS Data Model and Dictionary.

Classification: The last live version of this item is available in the February 2014 release of the NHS Data Model and Dictionary.

- a. No further action
- b. Further action required by health service
- c. Further action required by other agency

Access to this version can be obtained by emailing information.standards@hscic.gov.uk with "NHS Data Model and Dictionary - Archive Request" in the email subject line.

SURVEILLANCE RESULT (RETIRED)_ renamed from SURVEILLANCE RESULT

Change to Attribute: Changed Description, status to Retired, Name

- Changed Description
 - Retired SURVEILLANCE RESULT
 - Changed Name from Data_Dictionary.Attributes.S.Sup.SURVEILLANCE_RESULT to Retired.Data_Dictionary.Attributes.S.SURVEILLANCE_RESULT
-

VACCINATION REASON INDICATOR (RETIRED)_ renamed from VACCINATION REASON INDICATOR

Change to Attribute: Changed Description, status to Retired, Name

An indication of the reason for the vaccination given to a [PATIENT](#) by a [GENERAL MEDICAL PRACTITIONER](#). This item has been retired from the NHS Data Model and Dictionary.

Classification: The last live version of this item is available in the February 2014 release of the NHS Data Model and Dictionary.

- a. Epidemic
- b. Special Risk Group
- c. Routine Measure
- d. Traveller

Access to this version can be obtained by emailing information_standards@hscic.gov.uk with "NHS Data Model and Dictionary - Archive Request" in the email subject line.

VACCINATION REASON INDICATOR (RETIRED)_ renamed from VACCINATION REASON INDICATOR

Change to Attribute: Changed Description, status to Retired, Name

- Changed Description
- Retired VACCINATION REASON INDICATOR
- Changed Name from Data_Dictionary.Attributes.V.VACCINATION_REASON_INDICATOR to Retired.Data_Dictionary.Attributes.V.VACCINATION_REASON_INDICATOR

INTENDED PROCEDURE (OPCS) (RETIRED)_ renamed from INTENDED PROCEDURE (OPCS)

Change to Data Element: Changed Description, status to Retired, Name

Format/length:	an4
HES item:	
National Codes:	
Default Codes:	

Notes:

See [PROCEDURE CODING](#) for details on coding. **This item has been retired from the NHS Data Model and Dictionary.**

This is an [Intended Patient Procedure](#) for CDS purposes. Up to a maximum of 3 intended procedures can be reported. **The last live version of this item is available in the February 2014 release of the NHS Data Model and Dictionary.**

The procedure is as recorded by the [CLINICAL CLASSIFICATION CODE](#) of the [CLINICAL CLASSIFICATION](#) which is an [OPERATIVE PROCEDURE](#) for the [PLANNED ACTIVITY](#). **Access to this version can be obtained by emailing information_standards@hscic.gov.uk with "NHS Data Model and Dictionary - Archive Request" in the email subject line.**

INTENDED PROCEDURE (OPCS) (RETIRED)_ renamed from INTENDED PROCEDURE (OPCS)

Change to Data Element: Changed Description, status to Retired, Name

- Changed Description
- Retired INTENDED PROCEDURE (OPCS)
- Changed Name from Data_Dictionary.Data_Field_Notes.I.In.INTENDED_PROCEDURE_(OPCS) to Retired.Data_Dictionary.Data_Field_Notes.I.In.INTENDED_PROCEDURE_(OPCS)

INTENDED PROCEDURE (READ) (RETIRED)_ renamed from INTENDED PROCEDURE (READ)

Change to Data Element: Changed Description, status to Retired, Name

Format/length:	an7
----------------	-----

HES item:
National Codes:
Default Codes:

Notes:

See [PROCEDURE CODING](#) for details on coding. This item has been retired from the NHS Data Model and Dictionary.

This is the [Intended Patient Procedure](#) recorded for CDS purposes. Up to a maximum of 3 intended procedures can be reported. The last live version of this item is available in the February 2014 release of the NHS Data Model and Dictionary.

The procedure is as recorded by the [CLINICAL CLASSIFICATION CODE](#) of the [CLINICAL CLASSIFICATION](#) which is a [READ CLASSIFICATION](#) for the [PLANNED ACTIVITY](#). Access to this version can be obtained by emailing information.standards@hscic.gov.uk with "NHS Data Model and Dictionary - Archive Request" in the email subject line.

INTENDED PROCEDURE (READ) (RETIRED)_ renamed from INTENDED PROCEDURE (READ)

Change to Data Element: Changed Description, status to Retired, Name

- Changed Description
- Retired INTENDED PROCEDURE (READ)
- Changed Name from Data_Dictionary.Data_Field_Notes.I.In.INTENDED_PROCEDURE_(READ) to Retired.Data_Dictionary.Data_Field_Notes.I.INTENDED_PROCEDURE_(READ)

NHS SERVICE AGREEMENT CHANGE TYPE (RETIRED)_ renamed from NHS SERVICE AGREEMENT CHANGE TYPE

Change to Data Element: Changed Description, status to Retired, Name, linked Attribute

Format/length:	an2
HES item:	
National Codes:	See NHS SERVICE AGREEMENT CHANGE TYPE
Default Codes:	98 - Not applicable: no change to NHS Service Agreement 99 - Not known: a validation error

Notes:

During an elective wait, there may be a change of commissioner, for example, a [PATIENT](#) may move house while waiting for admission into hospital. Alternatively there may be a change in [NHS SERVICE AGREEMENTS](#) with the same commissioner. Changes of commissioner result in an [NHS SERVICE AGREEMENT](#).

An [NHS SERVICE AGREEMENT](#) does not apply to a change of provider. A provider change would always require a new [DECISION TO ADMIT](#) with the [PATIENT](#) being placed on a new [ELECTIVE ADMISSION LIST](#). This item has been retired from the NHS Data Model and Dictionary.

The last live version of this item is available in the February 2014 release of the NHS Data Model and Dictionary.

Access to this version can be obtained by emailing information.standards@hscic.gov.uk with "NHS Data Model and Dictionary - Archive Request" in the email subject line.

NHS SERVICE AGREEMENT CHANGE TYPE (RETIRED)_ renamed from NHS SERVICE AGREEMENT CHANGE TYPE

Change to Data Element: Changed Description, status to Retired, Name, linked Attribute

~~NHS SERVICE AGREEMENT CHANGE TYPE~~

Attribute:

[~~NHS SERVICE AGREEMENT CHANGE TYPE~~](#)

NHS SERVICE AGREEMENT CHANGE TYPE (RETIRED)_ renamed from NHS SERVICE AGREEMENT CHANGE TYPE

Change to Data Element: Changed Description, status to Retired, Name, linked Attribute

- Changed Description
 - Retired NHS SERVICE AGREEMENT CHANGE TYPE
 - Changed Name from
Data_Dictionary.Data_Field_Notes.N.NHS.NHS_SERVICE_AGREEMENT_CHANGE_TYPE to
Retired.Data_Dictionary.Data_Field_Notes.N.NHS_SERVICE_AGREEMENT_CHANGE_TYPE
 - null
-

For enquiries about this Change Request, please email information.standards@hscic.gov.uk