

## Health and Social Care Information Centre

### NHS Data Model and Dictionary Service

<b>Type:</b>	Data Dictionary Change Notice
<b>Reference:</b>	1416
<b>Version No:</b>	1.0
<b>Subject:</b>	Retirement of Standards: KC64 - DSCNs 05/98/P05 and 26/95/W02
<b>Effective Date:</b>	1 April 2014
<b>Reason for Change:</b>	Retirement of Data Standards
<b>Publication Date:</b>	25 February 2014

#### Background:

The Information Standards Board for Health and Social Care (ISB) has conducted a review of all Data Set Change Notices (DSCNs) and Information Standards Notices (ISNs) issued since 1987, to update its portfolio of standards prior to the handover of responsibility to NHS England, the Health and Social Care Information Centre (HSCIC) and Public Health England.

This review has identified a number of data standards in the NHS Data Model and Dictionary which have been superseded or are no longer in use.

This Data Dictionary Change Notice (DDCN) retires the items in the NHS Data Model and Dictionary in line with the retirement of the following Data Set Change Notices, as listed on the ISB [Advanced Notification - Withdrawal](#) issued 26/09/13:

- DSCN 05/98/P05 - Central Return: Community Dental Service: Dental Activity - KC64
- DSCN 25/98/P17 - Data Standards: Dental Activity - KC64
- DSCN 26/95/W02 - Dental Staff

To view a demonstration on "How to Read an NHS Data Model and Dictionary Change Request", visit the NHS Data Model and Dictionary help pages at: [http://www.datadictionary.nhs.uk/Flash\\_Files/changerequest.htm](http://www.datadictionary.nhs.uk/Flash_Files/changerequest.htm).

Note: if the web page does not open, please copy the link and paste into the web browser.

#### Summary of changes:

##### **Diagrams**

<a href="#">ACTIVITY DIAGRAM</a>	Changed Diagram
<a href="#">CARE PROFESSIONAL DIAGRAM</a>	Changed Diagram
<a href="#">CHILD AND ADOLESCENT MENTAL HEALTH SERVICES SECONDARY USES DIAGRAM</a>	Changed Diagram
<a href="#">CHILDREN AND YOUNG PEOPLE'S HEALTH SERVICE SECONDARY USES DIAGRAM</a>	Changed Diagram
<a href="#">HIV AND AIDS DIAGRAM</a>	Changed Diagram
<a href="#">REFERRAL REQUEST DIAGRAM</a>	Changed Diagram
<a href="#">SYSTEMIC ANTI-CANCER THERAPY DIAGRAM</a>	Changed Diagram

##### **Supporting Information**

<a href="#">COMMUNITY</a>	Changed Description
<a href="#">DENTAL EPISODE (RETIRED)</a> renamed from <a href="#">DENTAL EPISODE</a>	Changed Name, status to Retired, Description
<a href="#">DENTAL STAFF MEMBER (RETIRED)</a> renamed from <a href="#">DENTAL STAFF MEMBER</a>	Changed Name, status to Retired, Description
<a href="#">DENTAL TREATMENT (RETIRED)</a> renamed from <a href="#">DENTAL TREATMENT</a>	Changed Name, status to Retired, Description
<a href="#">DENTAL TREATMENT CONTACT (RETIRED)</a> renamed from <a href="#">DENTAL TREATMENT CONTACT</a>	Changed Name, status to Retired, Description

<a href="#">FACE TO FACE CONTACT DENTAL (RETIRED)</a> renamed from <a href="#">FACE TO FACE CONTACT DENTAL</a>	Changed Name, status to Retired, Description
<a href="#">KC64 1 (RETIRED)</a> renamed from <a href="#">KC64 1</a>	Changed Name, status to Retired, Description
<a href="#">KC64 2 (RETIRED)</a> renamed from <a href="#">KC64 2</a>	Changed Name, status to Retired, Description
<a href="#">ORAL HEALTH PROGRAMME (RETIRED)</a> renamed from <a href="#">ORAL HEALTH PROGRAMME</a>	Changed Name, status to Retired, Description

**Class Definitions**

<a href="#">ACTIVITY GROUP</a>	Changed Attributes
<a href="#">CARE CONTACT</a>	Changed Attributes
<a href="#">CARE PROFESSIONAL</a>	Changed Relationships
<a href="#">CLINICAL INTERVENTION</a>	Changed Attributes
<a href="#">GENERAL DENTAL PRACTITIONER</a>	Changed Attributes
<a href="#">HEALTH PROGRAMME</a>	Changed Relationships, Attributes
<a href="#">REFERRAL REQUEST</a>	Changed Attributes
<a href="#">REPORTING PERIOD</a>	Changed Relationships
<a href="#">STAFF MEMBER IN PERIOD (RETIRED)</a> renamed from <a href="#">STAFF MEMBER IN PERIOD</a>	Changed Name, status to Retired, Description
<a href="#">STAFF MEMBER IN PROGRAMME (RETIRED)</a> renamed from <a href="#">STAFF MEMBER IN PROGRAMME</a>	Changed Name, Relationships, status to Retired, Description
<a href="#">STAFF MEMBER IN PROGRAMME IN PERIOD (RETIRED)</a> renamed from <a href="#">STAFF MEMBER IN PROGRAMME IN PERIOD</a>	Changed Name, status to Retired, Description

**Attribute Definitions**

<a href="#">ACTIVITY GROUP TYPE</a>	Changed Description
<a href="#">CARE CONTACT TYPE</a>	Changed Description
<a href="#">CARE CONTACT TYPE FOR CHILDREN AND YOUNG PEOPLE'S HEALTH SERVICE SECONDARY USES</a>	Changed Description
<a href="#">CLINICAL INTERVENTION TYPE</a>	Changed Description
<a href="#">DDP CODE (RETIRED)</a> renamed from <a href="#">DDP CODE</a>	Changed Name, status to Retired, Description
<a href="#">DENTAL HAEMORRHAGE SERVICE TYPE (RETIRED)</a> renamed from <a href="#">DENTAL HAEMORRHAGE SERVICE TYPE</a>	Changed Name, status to Retired, Description
<a href="#">DENTAL REFERRAL INDICATOR (RETIRED)</a> renamed from <a href="#">DENTAL REFERRAL INDICATOR</a>	Changed Name, status to Retired, Description
<a href="#">DENTAL TREATMENT CLASSIFICATION (RETIRED)</a> renamed from <a href="#">DENTAL TREATMENT CLASSIFICATION</a>	Changed Name, status to Retired, Description
<a href="#">GENERAL DENTAL SERVICE INDICATOR (RETIRED)</a> renamed from <a href="#">GENERAL DENTAL SERVICE INDICATOR</a>	Changed Name, status to Retired, Description
<a href="#">HEALTH PROGRAMME TYPE</a>	Changed Description
<a href="#">HOURS WORKED IN PERIOD ON PROGRAMME (RETIRED)</a> renamed from <a href="#">HOURS WORKED IN PERIOD ON PROGRAMME</a>	Changed Name, status to Retired, Description
<a href="#">HOURS WORKED IN PERIOD ON SURVEY (RETIRED)</a> renamed from <a href="#">HOURS WORKED IN PERIOD ON SURVEY</a>	Changed Name, status to Retired, Description
<a href="#">HOURS WORKED IN PERIOD ON TREATMENT (RETIRED)</a> renamed from <a href="#">HOURS WORKED IN PERIOD ON TREATMENT</a>	Changed Name, status to Retired, Description
<a href="#">ORAL HEALTH AGE GROUP (RETIRED)</a> renamed from <a href="#">ORAL HEALTH AGE GROUP</a>	Changed Name, status to Retired, Description
<a href="#">SCREENING OR PROMOTION INDICATOR (RETIRED)</a> renamed from <a href="#">SCREENING OR PROMOTION INDICATOR</a>	Changed Name, status to Retired, Description
<a href="#">SOURCE OF REFERRAL FOR COMMUNITY DENTAL (RETIRED)</a> renamed from <a href="#">SOURCE OF REFERRAL FOR COMMUNITY DENTAL</a>	Changed Name, status to Retired, Description
<a href="#">STAFF MEMBER IN PROGRAMME END DATE (RETIRED)</a> renamed from <a href="#">STAFF MEMBER IN PROGRAMME END DATE</a>	Changed Name, status to Retired, Description
<a href="#">STAFF MEMBER IN PROGRAMME START DATE (RETIRED)</a> renamed from <a href="#">STAFF MEMBER IN PROGRAMME START DATE</a>	Changed Name, status to Retired, Description

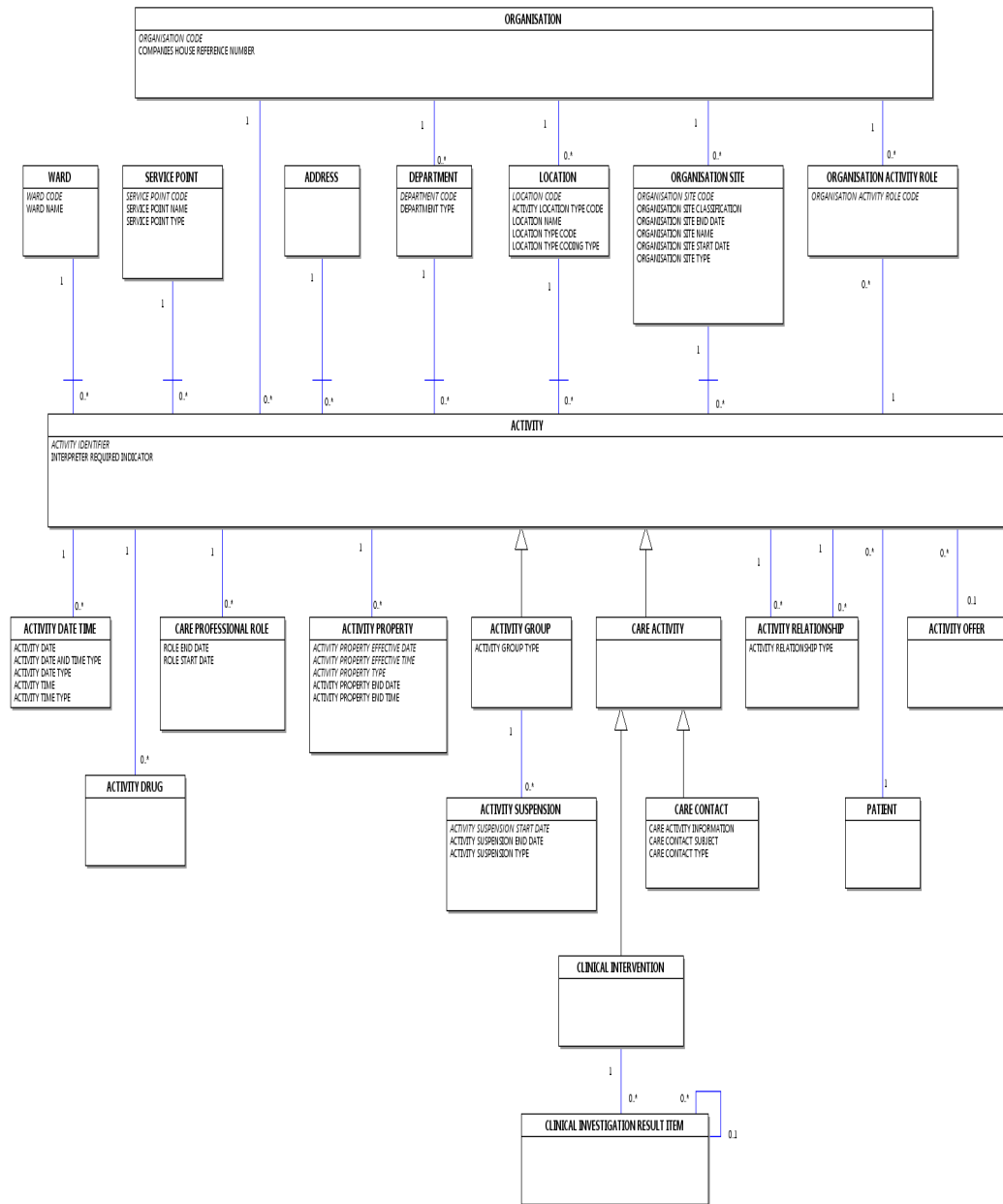
**Date:** 25 February 2014

**Sponsor:** Dr K. Lunn, Director of Information Standards Delivery, Health and Social Care Information Centre

**Note:** New text is shown with a blue background. Deleted text is crossed out. Retired text is shown in grey. Within the Diagrams deleted classes and relationships are red, changed items are blue and new items are green.

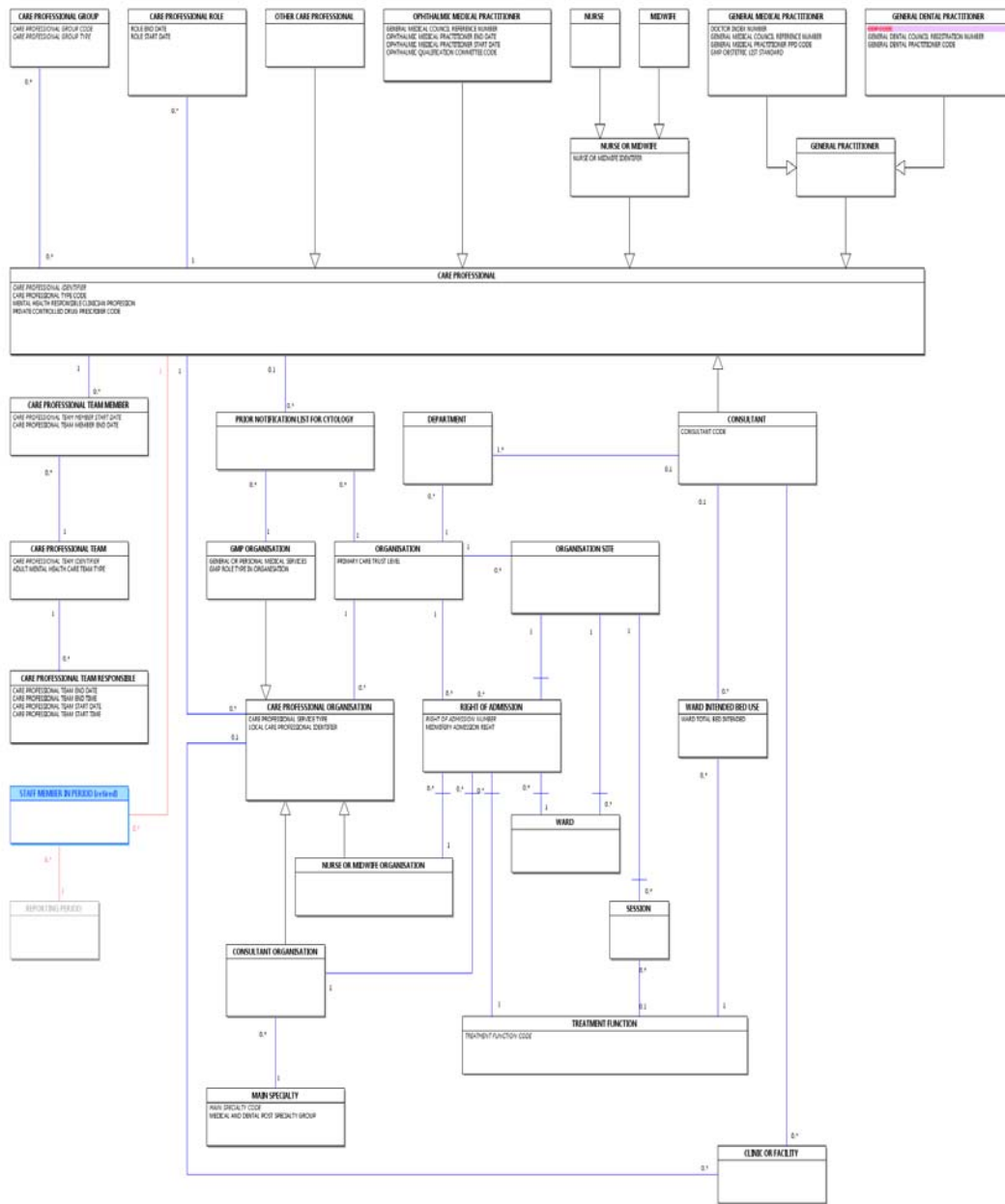
# ACTIVITY DIAGRAM

Change to Diagram: Changed Diagram



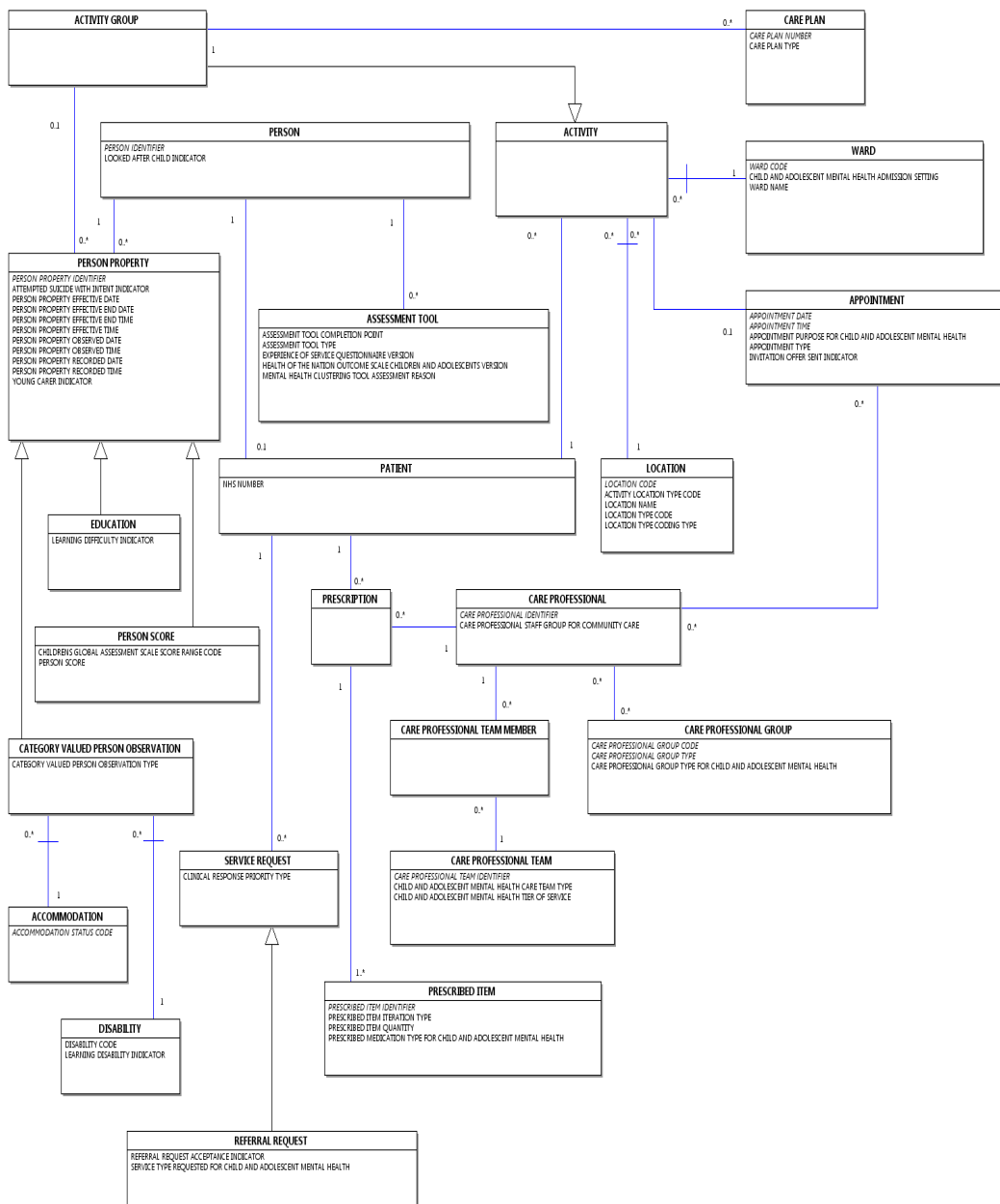
# CARE PROFESSIONAL DIAGRAM

Change to Diagram: Changed Diagram



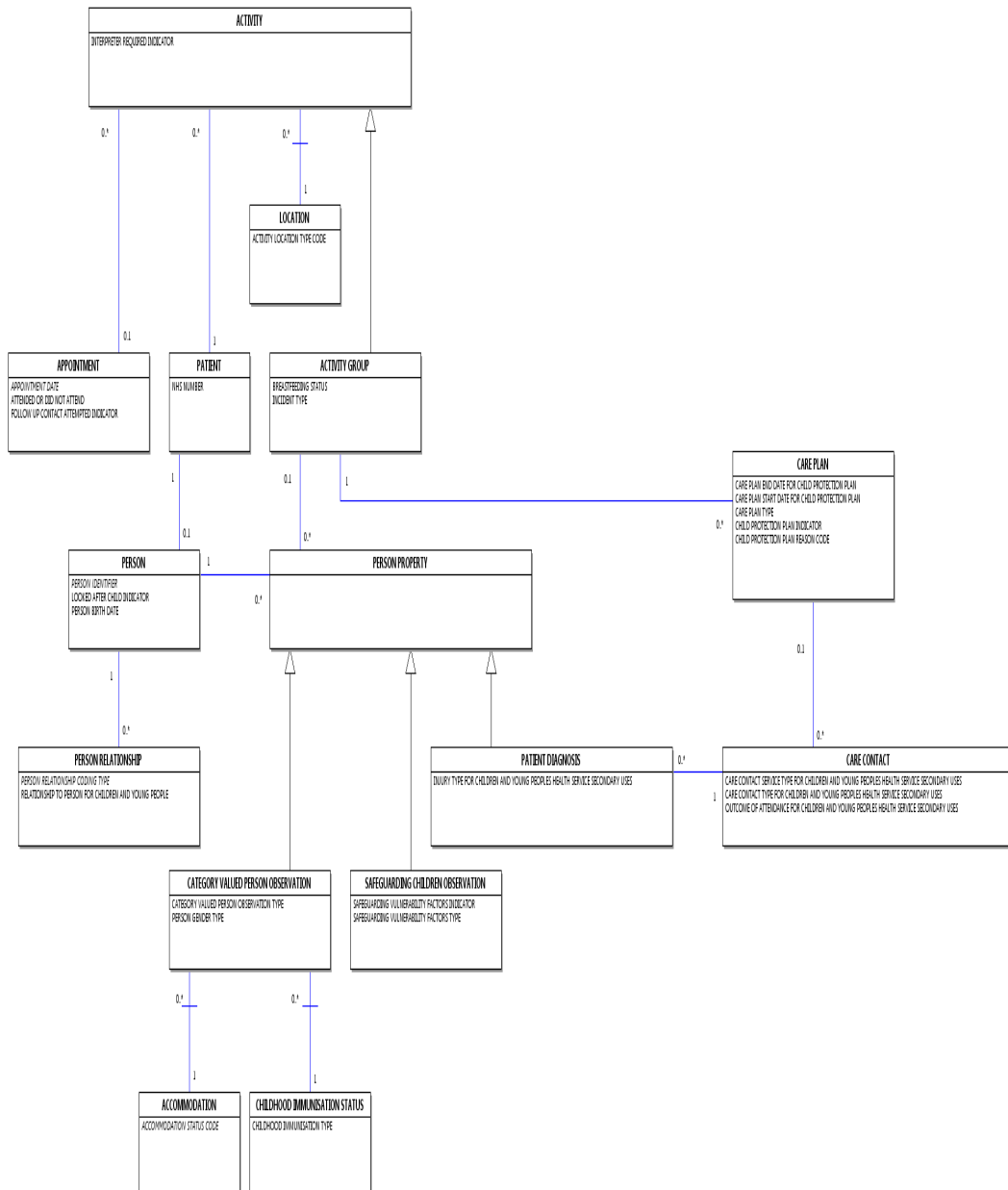
# CHILD AND ADOLESCENT MENTAL HEALTH SERVICES SECONDARY USES DIAGRAM

Change to Diagram: Changed Diagram



# CHILDREN AND YOUNG PEOPLE'S HEALTH SERVICE SECONDARY USES DIAGRAM

Change to Diagram: Changed Diagram







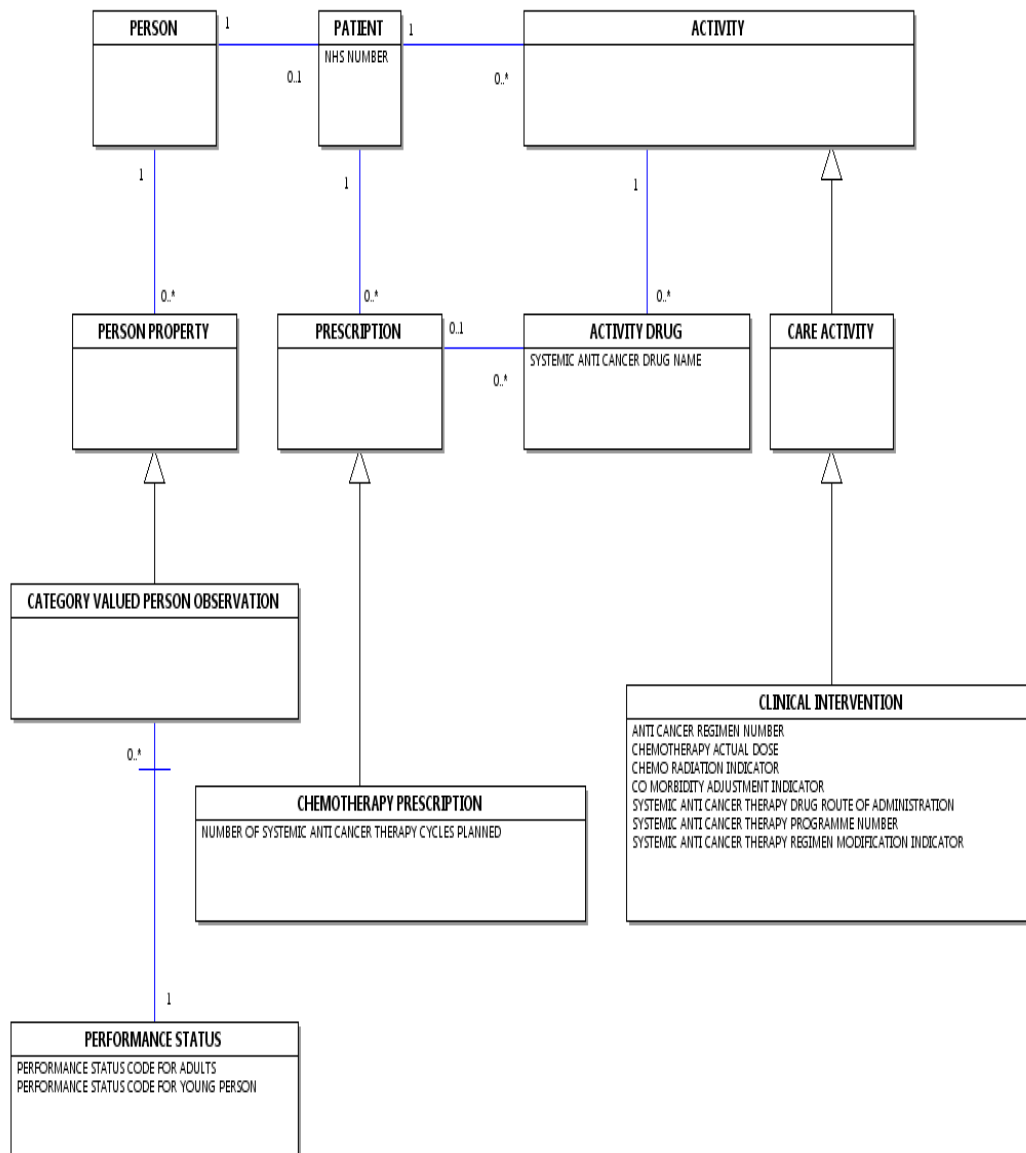


---

## SYSTEMIC ANTI-CANCER THERAPY DIAGRAM

---

Change to Diagram: Changed Diagram




---

## COMMUNITY

---

Change to Supporting Information: Changed Description

- [COVER](#)
- [KC53](#)
- [KC61](#)
- [KC64](#)
- [KC65](#)
- [Cover of Vaccination Evaluated Rapidly Return](#)
- [Adult Screening Programmes - Cervical Screening](#)
- [Pathology Laboratories: Cervical Screening and Outcome of Referrals](#)
- [Community Dental Service - Dental Activity](#)
- [Colposcopy Clinics: Referrals, Treatments and Outcomes](#)

---

## DENTAL EPISODE (RETIRED)\_ renamed from DENTAL EPISODE

---

Change to Supporting Information: Changed Name, status to Retired, Description

~~Dental Episode~~ is an ~~ACTIVITY GROUP~~. This item has been retired from the NHS Data Model and Dictionary.

~~A series of face to face contacts with community dental service staff needed to complete a ~~PATIENT~~ treatment plan. It will begin with an initial examination and diagnosis and will terminate either on the completion of a treatment plan or after a three month period in which the ~~PATIENT~~ has failed to make contact with the community dental service. A ~~Dental Episode~~ may involve more than one ~~Dental Staff Member~~ providing treatment and may involve more than one ~~Dental Treatment Contacts~~. The last live version of this item is available in the February 2014 release of the NHS Data Model and Dictionary.~~

~~Note that an appointment for a routine check-up in six months time would be the start of a new episode, not a continuation of an existing one. Access to this version can be obtained by emailing [information.standards@hscic.gov.uk](mailto:information.standards@hscic.gov.uk) with "NHS Data Model and Dictionary - Archive Request" in the email subject line.~~

---

### DENTAL EPISODE (RETIRED)\_ renamed from DENTAL EPISODE

---

Change to Supporting Information: Changed Name, status to Retired, Description

- Changed Name from Data\_Dictionary.NHS\_Business\_Definitions.D.Dental\_Episode to Retired.Data\_Dictionary.NHS\_Business\_Definitions.D.Dental\_Episode
- Retired Dental Episode
- Changed Description

---

### DENTAL STAFF MEMBER (RETIRED)\_ renamed from DENTAL STAFF MEMBER

---

Change to Supporting Information: Changed Name, status to Retired, Description

~~Dental Staff Member~~ is a ~~CARE PROFESSIONAL~~. This item has been retired from the NHS Data Model and Dictionary.

~~A person employed by the community dental service to provide oral health care (including epidemiology, oral health prevention screening and promotion). A ~~Dental Staff Member~~ must belong to one dental staff group. The last live version of this item is available in the February 2014 release of the NHS Data Model and Dictionary.~~

~~Access to this version can be obtained by emailing [information.standards@hscic.gov.uk](mailto:information.standards@hscic.gov.uk) with "NHS Data Model and Dictionary - Archive Request" in the email subject line.~~

---

### DENTAL STAFF MEMBER (RETIRED)\_ renamed from DENTAL STAFF MEMBER

---

Change to Supporting Information: Changed Name, status to Retired, Description

- Changed Name from Data\_Dictionary.NHS\_Business\_Definitions.D.Dental\_Staff\_Member to Retired.Data\_Dictionary.NHS\_Business\_Definitions.D.Dental\_Staff\_Member
- Retired Dental Staff Member
- Changed Description

---

### DENTAL TREATMENT (RETIRED)\_ renamed from DENTAL TREATMENT

---

Change to Supporting Information: Changed Name, status to Retired, Description

~~Dental Treatment~~ is a ~~CLINICAL INTERVENTION~~. This item has been retired from the NHS Data Model and Dictionary.

~~Dental Treatment~~ is the delivery of dental care of a single ~~DENTAL TREATMENT CLASSIFICATION~~ given during a ~~Dental Treatment Contact~~. This includes all treatment given by community dental services outside an ~~Oral Health Programme~~. The last live version of this item is available in the February 2014 release of the NHS Data Model and Dictionary.

Access to this version can be obtained by emailing [information.standards@hscic.gov.uk](mailto:information.standards@hscic.gov.uk) with "NHS Data Model and Dictionary - Archive Request" in the email subject line.

---

## DENTAL TREATMENT (RETIRED)\_ renamed from DENTAL TREATMENT

---

Change to Supporting Information: Changed Name, status to Retired, Description

- Changed Name from Data\_Dictionary.NHS\_Business\_Definitions.D.Dental\_Treatment to Retired.Data\_Dictionary.NHS\_Business\_Definitions.D.Dental\_Treatment
- Retired Dental Treatment
- Changed Description

---

## DENTAL TREATMENT CONTACT (RETIRED)\_ renamed from DENTAL TREATMENT CONTACT

---

Change to Supporting Information: Changed Name, status to Retired, Description

~~Dental Treatment Contact~~ is a ~~CARE CONTACT~~. This item has been retired from the NHS Data Model and Dictionary.

A single occasion within a ~~Dental Episode~~ involving a face to face contact between a ~~Dental Staff Member~~ and a ~~PATIENT~~ where dental care is provided. This encompasses all patient care provided by the Community Dental Service, excluding care provided as part of an ~~Oral Health Programme~~. Each ~~Dental Treatment Contact~~ may involve more than one ~~Dental Treatments~~ with different ~~DENTAL TREATMENT CLASSIFICATIONS~~. The last live version of this item is available in the February 2014 release of the NHS Data Model and Dictionary.

Access to this version can be obtained by emailing [information.standards@hscic.gov.uk](mailto:information.standards@hscic.gov.uk) with "NHS Data Model and Dictionary - Archive Request" in the email subject line.

---

## DENTAL TREATMENT CONTACT (RETIRED)\_ renamed from DENTAL TREATMENT CONTACT

---

Change to Supporting Information: Changed Name, status to Retired, Description

- Changed Name from Data\_Dictionary.NHS\_Business\_Definitions.D.Dental\_Treatment\_Contact to Retired.Data\_Dictionary.NHS\_Business\_Definitions.D.Dental\_Treatment\_Contact
- Retired Dental Treatment Contact
- Changed Description

---

## FACE TO FACE CONTACT DENTAL (RETIRED)\_ renamed from FACE TO FACE CONTACT DENTAL

---

Change to Supporting Information: Changed Name, status to Retired, Description

~~Face To Face Contact Dental~~ is a ~~CARE CONTACT~~. This item has been retired from the NHS Data Model and Dictionary.

A single occasion involving contact between a ~~Dental Staff Member~~ and a ~~PATIENT~~ as part of an ~~Oral Health Programme~~. The last live version of this item is available in the February 2014 release of the NHS Data Model and Dictionary.

Information recorded for a [Face To Face Contact Dental](#) includes: Access to this version can be obtained by emailing [information.standards@hscic.gov.uk](mailto:information.standards@hscic.gov.uk) with "NHS Data Model and Dictionary - Archive Request" in the email subject line.

[Contact Date](#)

[DENTAL REFERRAL INDICATOR](#)

[First Contact In Financial Year](#)

[Initial Contact](#)

[ORAL HEALTH AGE GROUP](#)

---

## FACE TO FACE CONTACT DENTAL (RETIRED)\_ renamed from FACE TO FACE CONTACT DENTAL

---

Change to Supporting Information: Changed Name, status to Retired, Description

- Changed Name from Data\_Dictionary.NHS\_Business\_Definitions.F.Face\_To\_Face\_Contact\_Dental to Retired.Data\_Dictionary.NHS\_Business\_Definitions.F.Face\_To\_Face\_Contact\_Dental
- Retired Face To Face Contact Dental
- Changed Description

---

## KC64 1 (RETIRED)\_ renamed from KC64 1

---

Change to Supporting Information: Changed Name, status to Retired, Description

**This item has been retired from the NHS Data Model and Dictionary.**

**The last live version of this item is available in the February 2014 release of the NHS Data Model and Dictionary.**

Access to this version can be obtained by emailing [information.standards@hscic.gov.uk](mailto:information.standards@hscic.gov.uk) with "NHS Data Model and Dictionary - Archive Request" in the email subject line.

---

## KC64 1 (RETIRED)\_ renamed from KC64 1

---

Change to Supporting Information: Changed Name, status to Retired, Description

## General Return Form Guidance

### [KC64: Community Dental Service - Dental Activity](#)

#### Contextual Overview

- The [Department of Health](#) and Regional Offices require summary details from NHS [Health Care Providers](#) on Community Dental Health Services to monitor the availability of Community Dental Health Services and to ensure that value for money is being achieved in this area.
- Information based on the return is also used for Departmental accountability.
- Some of the information based on the return is published in "*Health and Personal Social Services Statistics*".

#### Completing [KC64: Community Dental Service - Dental Activity](#)

- The central return KC64 is completed by [NHS Trusts](#) and [Strategic Health Authority](#) for their staff providing community dental services. It requires information on Community Dental Health Service activity, covering hours worked, age group of [PATIENT](#), source of referral and some types of work carried out.

- The KC64 return relates to activity taking place over a 12-month period, between 1 April of one year and 31 March of the following year. The return is made annually and submitted within two months of the end of the year to which it relates.
- KC64 requires the [ORGANISATION CODE](#) and [ORGANISATION NAME](#) of the NHS [Health Care Providers](#) as well as the name of the contact and the contact telephone number, with an e-mail address, if available.

### **Part 1: Screening Programmes**

- Part 1 of the return requires information on [Oral Health Programme](#) screening activity carried out and the number of people referred for treatment as a result of screening.

[Oral Health Programme](#) is a [HEALTH PROGRAMME](#) where the [HEALTH PROGRAMME TYPE](#) is National Code 'Oral Health Programme'.

- Part 1 applies to those [Oral Health Programmes](#) where the [SCREENING OR PROMOTION INDICATOR](#) identifies that the programme is a [Screening Programme](#). It requires a count of the total number of [PATIENTS](#) screened, and (of those) the number referred for further attention. No information is required about hours worked for this part of the return.
- The contact date for the [Face To Face Contact Dental](#) must fall within the period covered by the return, between 1 April and 31 March.
- [Face to Face Contacts Dental](#) is a [CARE CONTACT](#) where the [CARE CONTACT TYPE](#) is National Code 'Face to Face Contact Dental'. [Contact Date](#) is the same as attribute [ACTIVITY DATE](#) where [ACTIVITY DATE TYPE](#) is National Code 'Contact Date'.

### **Number screened (Initial Contacts)**

- This requires a count of all the [Face to Face Contacts Dental](#) identified as [Initial Contacts](#).

[Initial Contact](#) is the first face to face [CARE CONTACT](#) occasion on which a [PATIENT](#) is seen.

### **Number referred (total) (from screening Initial Contacts)**

- This requires a count of the [Face To Face Contact Dental](#) identified as first contacts in the financial year where the [DENTAL REFERRAL INDICATOR](#) indicates whether the [PATIENT](#) has been referred for further attention or not following screening during a [Face To Face Contact Dental](#).
- The [Face to Face Contacts Dental](#) are subdivided by the classifications of [ORAL HEALTH AGE GROUP](#) as follows:

*Children 0-4 (line 0001)*  
*Children 5-15 (line 0002)*  
*Patients aged 16-64 (line 0003)*  
*Patients aged 65 or over (line 0004)*

### **Total (line 9999)**

- This is the total of all age groups counted in lines 0001-0004.

### **Part 2: Preventive Programmes**

- Part 2 applies to those [Oral Health Programmes](#) run in the [Strategic Health Authority](#) or [NHS Trust](#) with a [SCREENING OR PROMOTION INDICATOR](#) of Health promotion. It requires a count of the hours worked by all grades of dental [STAFF MEMBERS IN PROGRAMMES IN PERIODS](#).

### **Part 2a: Hours Worked In Oral Health Promotion And Other Preventive Programmes**

- Part 2a requires the total of [HOURS WORKED IN PERIOD ON PROGRAMME](#) by all grades of dental [STAFF MEMBERS IN PROGRAMMES IN PERIODS](#) - these are the [Dental Staff Members](#) involved in work on the [Oral](#)

~~Health Programme with a [SCREENING OR PROMOTION INDICATOR](#) of health promotion during one financial year [REPORTING PERIOD](#).~~

### **~~PART 2b: Oral Health Promotion And Other Preventive Programmes~~**

- ~~Part 2b requires the number of [Health Promotion Programmes](#) and other [Oral Health Programmes](#) run in the [Strategic Health Authority](#) or [NHS Trusts](#) with a [SCREENING OR PROMOTION INDICATOR](#) of Health promotion in place at the date of the return. These are sub-divided by the [ORAL HEALTH AGE GROUP](#) classifications as follows:~~

~~Children 0 – 4 (line 0001)~~

~~Children 5 – 15 (line 0002)~~

~~Patients aged 16 – 64 (line 0003)~~

~~Patients aged 65 or over (line 0004)~~

### **~~Total (line 9999)~~**

- ~~This is the total of all age groups counted in lines 0001 – 0004.~~

### **~~Part 3: Patient Care~~**

- ~~Part 3 requires information on different aspects of [PATIENT](#) dental treatment:~~
  - ~~the hours worked by staff;~~
  - ~~the number of patients seen, both first contacts in financial year and initial contacts;~~
  - ~~information on referral;~~
  - ~~details of some treatment carried out.~~

### **~~Part 3a: Hours Worked~~**

- ~~Part 3a requires the total of [HOURS WORKED IN PERIOD ON TREATMENT](#) by all grades of dental staff members in periods – these are the [Dental Staff Members](#) involved in the treatment of patients during a financial period.~~

---

#### **KC64 1 (RETIRED)\_ renamed from KC64 1**

Change to Supporting Information: Changed Name, status to Retired, Description

- Changed Name from Data\_Dictionary.Messages.Central\_Return\_Forms.Community.KC64.kc64\_1 to Retired.Data\_Dictionary.Messages.Central\_Return\_Forms.Community.KC64.kc64\_1
- Retired kc64 1
- Changed Description

---

#### **KC64 2 (RETIRED)\_ renamed from KC64 2**

Change to Supporting Information: Changed Name, status to Retired, Description

**This item has been retired from the NHS Data Model and Dictionary.**

**The last live version of this item is available in the February 2014 release of the NHS Data Model and Dictionary.**

**Access to this version can be obtained by emailing [information\\_standards@hscic.gov.uk](mailto:information_standards@hscic.gov.uk) with "NHS Data Model and Dictionary - Archive Request" in the email subject line.**

---

#### **KC64 2 (RETIRED)\_ renamed from KC64 2**

Change to Supporting Information: Changed Name, status to Retired, Description

**Central Return Form Guidance**

## KC64 - Community Dental Service - Dental Activity

### **Part 3: Patient Care - continued**

#### **Part 3b: Patient Contacts**

- Part 3b requires a count of the total episodes of care started and the total number of individuals seen in the period covered by the return, between 1 April and 31 March. The contacts are sub-divided by Age Group which are classifications of [ORAL HEALTH AGE GROUP](#).

*Children 0-4*

*Children 5-15*

*Patients aged 16-64*

*Patients aged 65 or over*

#### **Total Episodes of Care (Initial Contacts) (line 0001)**

- The number of episodes started in the period is obtained by counting the [Dental Treatment Contacts](#) identified as [Initial Contacts](#).

[Dental Treatment Contact](#) is a [Face To Face Contact Dental](#) within a [Dental Episode](#) involving a face to face between a [Dental Staff Member](#) and a PATIENT where dental care is provided. [Initial Contact](#) is the first face to face [CARE CONTACT](#) occasion on which a [PATIENT](#) is seen. [Dental Episode](#) is an [ACTIVITY GROUP](#) where [ACTIVITY GROUP TYPE](#) is National Code 'Dental Episode'.

#### **Total Individuals seen (First Contacts in the Financial Year) (line 0002)**

- The number of individuals seen in the period is obtained by counting the [Dental Treatment Contact](#) identified as first contact in the financial year. Note that this includes those individuals with a [Dental Episode](#) spanning the end of one financial year and the start of another.

#### **Part 3c: Information on Referral**

- Part 3c requires information on episodes of care started in the period covered by the return by Dental Referral Source Type. The count of episodes is obtained by counting the [Dental Treatment Contacts](#) between 1 April and 31 March identified as [Initial Contact](#). These are sub-divided by Age Group which are classifications of [ORAL HEALTH AGE GROUP](#).

*Children 0-4*

*Children 5-15*

*Patients aged 16-64*

*Patients aged 65 or over*

#### **Source of Referral (i) Episodes of Care (first column)**

- This column lists the various [SOURCE OF REFERRAL FOR COMMUNITY DENTAL](#).

#### **Community Dental Service (CDS) screening programme (line 0001)**

- This requires a count of [Initial Contacts](#) initiated by a [SOURCE OF REFERRAL FOR COMMUNITY DENTAL](#) classification of 'Community Dental Service screening programme'.

#### **Other dentist (line 0002)**

- This requires a count of [Initial Contacts](#) initiated by a [SOURCE OF REFERRAL FOR COMMUNITY DENTAL](#) classification of 'Other dentist'.

#### **Recall (line 0003)**

- This requires a count of [Initial Contacts](#) initiated by a [SOURCE OF REFERRAL FOR COMMUNITY DENTAL](#) classification of 'Recall'.

#### **Self (line 0004)**



- This requires a count of [Initial Contacts](#) initiated by a [SOURCE OF REFERRAL FOR COMMUNITY DENTAL](#) classification of 'Self'.

#### **Other (line 0005)**

- This requires a count of [Initial Contacts](#) initiated by [SOURCE OF REFERRAL FOR COMMUNITY DENTAL](#) classification of 'Other'.

#### **Total Episodes of Care (line 9999)**

- This is the total of [Dental Episodes](#) initiated by all referral sources.

#### **Source Of Referral (ii) Episodes for which individuals were unable to obtain treatment within the GDS (line 0006)**

- This requires a count of [Dental Episodes](#) where the [GENERAL DENTAL SERVICE INDICATOR](#) indicates that the General Dental Service was unable to provide care.

#### **Part 3d: Patient Care**

- Part 3d requires information on episodes of care that include certain [DENTAL TREATMENT CLASSIFICATIONS](#) with a [Contact Date](#) (see [ACTIVITY DATE](#)) within the period covered by the return. These are sub-divided by [ORAL HEALTH AGE GROUP](#) which are classifications of contact date:

*Children 0-4*

*Children 5-15*

*Patients aged 16-64*

*Patients aged 65 or over*

[Contact Date](#) is the same as attribute [ACTIVITY DATE](#) where [ACTIVITY DATE TYPE](#) is National Code '[Contact Date](#)'.

#### **General anaesthesia (line 0001)**

- This requires a count of the number of [Dental Episode](#) which include [Dental Treatment](#) of [DENTAL TREATMENT CLASSIFICATION](#) of 'General anaesthesia'. The [Contact Dates](#) must be in the period covered by the return.

[Dental Treatment](#) is a [CLINICAL INTERVENTION](#) where [CLINICAL INTERVENTION TYPE](#) is National Code '[Dental Treatment](#)'. [Contact Date](#) is the same as attribute [ACTIVITY DATE](#) where [ACTIVITY DATE TYPE](#) is National Code '[Contact Date](#)'.

#### **Sedation (line 0002)**

- This requires a count of the number of [Dental Episodes](#) which include [Dental Treatment](#) of [DENTAL TREATMENT CLASSIFICATION](#) of 'Sedation'. The [Contact Dates](#) must be in the period covered by the return.

#### **Orthodontics (line 0003)**

- This requires a count of the number of [Dental Episodes](#) which include [Dental Treatment](#) of [DENTAL TREATMENT CLASSIFICATION](#) of 'Orthodontics'. The [Contact Dates](#) must be in the period covered by the return. Note that no information is required about orthodontic treatment for [PATIENTS](#) aged 65 and over.

#### **Part 4: Epidemiology**

##### **Total hours spent on survey work**

- Part 4 requires the total of [HOURS WORKED IN PERIOD ON SURVEY](#) by Dental Officers (line 0001).

#### **KC64 2 (RETIRED)\_ renamed from KC64 2**

Change to Supporting Information: Changed Name, status to Retired, Description

- Changed Name from Data\_Dictionary.Messages.Central\_Return\_Forms.Community.KC64.kc64\_2 to

Retired.Data\_Dictionary.Messages.Central\_Return\_Forms.Community.KC64.kc64\_2

- Retired kc64 2
- Changed Description

---

## ORAL HEALTH PROGRAMME (RETIRED)\_ renamed from ORAL HEALTH PROGRAMME

---

Change to Supporting Information: Changed Name, status to Retired, Description

~~Oral Health Programme~~ is a ~~HEALTH PROGRAMME~~. **This item has been retired from the NHS Data Model and Dictionary.**

~~A programme for either screening or the promotion of oral hygiene.~~ **The last live version of this item is available in the February 2014 release of the NHS Data Model and Dictionary.**

~~A Screening Programme covers a large population and uses simple tests to identify individuals requiring a dental examination and/or dental care including counselling and advice.~~ **Access to this version can be obtained by emailing [information.standards@hscic.gov.uk](mailto:information.standards@hscic.gov.uk) with "NHS Data Model and Dictionary - Archive Request" in the email subject line.**

~~An oral health promotion (or education) programme is directed at groups of people in institutions, workplaces, schools etc to educate and motivate them to improve their behaviour with respect to oral health. It encompasses all preventive programmes where a defined age group receives some prophylactic or protective measure in order to reduce the levels of oral disease.~~

---

## ORAL HEALTH PROGRAMME (RETIRED)\_ renamed from ORAL HEALTH PROGRAMME

---

Change to Supporting Information: Changed Name, status to Retired, Description

- Changed Name from Data\_Dictionary.NHS\_Business\_Definitions.O.Oral\_Health\_Programme to Retired.Data\_Dictionary.NHS\_Business\_Definitions.O.Oral\_Health\_Programme
- Retired Oral Health Programme
- Changed Description

---

## ACTIVITY GROUP

---

Change to Class: Changed Attributes

*Attributes of this Class are:*

A and E INCIDENT LOCATION TYPE  
A and E PATIENT GROUP  
ACTIVITY GROUP TYPE  
ADMISSION METHOD  
BABY FIRST FEED BREAST MILK STATUS  
BREASTFEEDING STATUS  
CANCER OR SYMPTOMATIC BREAST REFERRAL PATIENT STATUS  
CANCER REFERRAL TO TREATMENT PERIOD START DATE  
CANCER SCREENING STATUS  
CANCER TREATMENT INTENT  
CANCER TREATMENT PERIOD START DATE  
CARE PROGRAMME APPROACH LEVEL  
CARER RESIDENT INDICATION CODE FOR NATIONAL NEONATAL DATA SET  
CHILDREN TEENAGERS AND YOUNG ADULTS AGE CATEGORY  
DELIVERY FACILITIES ONLY USED  
DELIVERY PLACE CHANGE REASON  
DISCHARGE DESTINATION  
DISCHARGED TO HOSPITAL AT HOME SERVICE INDICATOR  
DISCHARGE FROM MENTAL HEALTH SERVICE REASON

DISCHARGE METHOD  
FIRST REGULAR DAY OR NIGHT ADMISSION  
FULL POSTNATAL EXAMINATION DATE  
~~GENERAL DENTAL SERVICE INDICATOR~~  
IMPROVING ACCESS TO PSYCHOLOGICAL THERAPIES CARE SPELL END CODE  
INCIDENT TYPE  
INTRAVESICAL CHEMOTHERAPY RECEIVED INDICATOR  
INTRAVESICAL IMMUNOTHERAPY RECEIVED INDICATOR  
KEY WORKER SEEN INDICATOR  
LENGTH OF STAY ADJUSTMENT  
LENGTH OF STAY ADJUSTMENT REASON  
MONITORING INTENT  
NON SMOKING CONFIRMATION STATUS AT 4 WEEKS  
OUTCOME AT 4 WEEK FOLLOW-UP  
PAEDIATRIC NEPHROLOGY REGISTRY STATUS CODE  
PALLIATIVE CARE SPECIALIST SEEN INDICATOR  
PALLIATIVE TREATMENT REASON CODE FOR UPPER GASTROINTESTINAL  
PATIENT RECEIVING ONE TO ONE NURSING CARE INDICATOR  
PHARMACOTHERAPY STOP SMOKING AID RECEIVED  
PREGNANCY OUTCOME CODE  
PREGNANCY TOTAL PREVIOUS LOSSES LESS THAN 24 WEEKS  
PREVIOUS NEGATIVE HIV TEST IN UNITED KINGDOM INDICATOR  
RADIOTHERAPY INTENT  
RENAL DIALYSIS SCHEDULE TYPE  
SMOKING QUIT DATE  
SOURCE OF ADMISSION  
SUPERVISED COMMUNITY TREATMENT END REASON  
TELEPHONE CONTACT INDICATOR  
TREATMENT START DATE FOR CANCER

---

## CARE CONTACT

---

Change to Class: Changed Attributes

*Attributes of this Class are:*

A and E ATTENDANCE CATEGORY  
A and E INITIAL ASSESSMENT TRIAGE CATEGORY  
A and E STREAM  
ACCIDENT AND EMERGENCY ARRIVAL MODE  
ACCIDENT AND EMERGENCY ATTENDANCE DISPOSAL  
ACUTE HOME-BASED TELEPHONE CONTACT  
ANTENATAL OR POSTNATAL INDICATOR  
ANTIRETROVIRAL THERAPY HOME DELIVERY INDICATOR  
ANTIRETROVIRAL THERAPY REGIMEN GROUP CODE  
BRIEF INTERVENTION PROVIDED INDICATOR  
BRIEF INTERVENTION TYPE FOR NHS HEALTH CHECK  
CARE ACTIVITY INFORMATION  
CARE CONTACT SERVICE TYPE FOR CHILDREN AND YOUNG PEOPLES HEALTH SERVICE SECONDARY USES  
CARE CONTACT SUBJECT  
CARE CONTACT TYPE  
CARE CONTACT TYPE FOR CHILDREN AND YOUNG PEOPLES HEALTH SERVICE SECONDARY USES  
CHILD DIFFICULT TO TEST REASON  
CLINICAL NURSE SPECIALIST INDICATION CODE  
CLINIC ATTENDANCE PURPOSE CODE FOR HIV  
COLPOSCOPY PRIME PROCEDURE TYPE  
CONSULTATION MEDIUM USED  
CONTRACEPTIVE ADVICE GIVEN

CONTRACEPTIVE SERVICE TYPE  
DECISION TO UNDERTAKE FURTHER ASSESSMENT INDICATOR  
~~DENTAL HAEMORRHAGE SERVICE TYPE~~  
~~DENTAL REFERRAL INDICATOR~~  
DIETARY ADVICE REASON CODE  
EMPLOYMENT SUPPORT SUITABILITY INDICATOR  
FIRST ANTIRETROVIRAL THERAPY IN THE UNITED KINGDOM INDICATOR  
FIRST ATTENDANCE  
FURTHER ASSESSMENT TYPE FOR NHS HEALTH CHECK  
HEALTH PROMOTION STAFF GROUP  
INFORMATION AND ADVICE PROVIDED INDICATOR  
INFORMATION AND ADVICE TYPE PROVIDED FOR NHS HEALTH CHECK  
INITIAL CONTACT  
INITIAL DIAGNOSIS CARE SETTING FOR HIV  
IUD APPLICATION DATE  
MATERNITY MEDICAL SERVICE TYPE  
MATERNITY VISIT CALL REASON  
MEDICAL STAFF TYPE SEEING PATIENT  
METASTATIC STATUS  
MULTIPROFESSIONAL OR MULTIDISCIPLINARY INDICATION CODE  
NEW HIV DIAGNOSIS IN UNITED KINGDOM INDICATOR  
OUTCOME OF ATTENDANCE  
OUTCOME OF ATTENDANCE FOR CHILDREN AND YOUNG PEOPLES HEALTH SERVICE SECONDARY USES  
PATIENT EXPOSURE TO HIV  
PATIENT HIV CARE STATUS  
PATIENT INFORMED OF OUTCOME DATE  
PATIENT TRIAL STATUS FOR CANCER  
PAYMENT FROM PATIENT RECEIVED  
POST AND/OR PRE EXPOSURE PROPHYLAXIS CODE  
POSTNATAL CARE INDICATOR  
PREGNANCY INDICATOR FOR HIV  
PSYCHIATRIC CARE INDICATOR FOR HIV  
SETTLED ACCOMMODATION INDICATOR  
SIGNPOSTING TO SERVICE INDICATOR  
SIGNPOSTING TO SERVICE TYPE FOR NHS HEALTH CHECK  
SKIN TO SKIN CONTACT INDICATOR  
SOCIAL WORKER CARE INDICATOR FOR HIV  
STATUTORY ASSESSMENT TYPE  
SUBJECTIVE GLOBAL ASSESSMENT  
SURVEILLANCE RESULT  
THERAPY TYPE FOR IMPROVING ACCESS TO PSYCHOLOGICAL THERAPIES  
TWO YEAR NEONATAL OUTCOMES ASSESSMENT NOT CARRIED OUT REASON

---

## CARE PROFESSIONAL

---

Change to Class: Changed Relationships

### *Each CARE PROFESSIONAL*

- must be recorded as one and only one PERSON
- may be the subject of one or more APPOINTMENT
- may be the lead in one or more CARE PLAN
- may be a member of one or more CARE PROFESSIONAL GROUP
- may be employed by one or more CARE PROFESSIONAL ORGANISATION
- may be playing one or more CARE PROFESSIONAL ROLE
- may be member of one or more CARE PROFESSIONAL TEAM MEMBER
- may be related to one or more CLINICAL INVESTIGATION SERVICE PROVIDER
- may be the dispenser of one or more DISPENSED ITEM

may be responsible for one or more ELECTIVE ADMISSION LIST  
may be sharing care for one or more ELECTIVE ADMISSION LIST ENTRY  
may be instigator of one or more PLANNED ACTIVITY  
may be the prescriber of one or more PRESCRIPTION  
may be requestor of one or more SERVICE REPORT  
may be receive a copy of one or more SERVICE REPORT  
may be issue one or more SERVICE REPORT  
~~may be related to one or more STAFF MEMBER IN PERIOD~~  
~~may be related to one or more STAFF MEMBER IN PROGRAMME~~  
may be responsible for one or more WAITING LIST

---

## CLINICAL INTERVENTION

---

Change to Class: Changed Attributes

*Attributes of this Class are:*

ABDOMINAL XRAY PERFORMED REASON  
ABDOMINAL XRAY PERFORMED TO INVESTIGATE ABDOMINAL SIGNS INDICATOR  
ABLATIVE THERAPY TYPE  
ACCIDENT AND EMERGENCY INVESTIGATION  
ACCIDENT AND EMERGENCY TREATMENT  
ANAESTHESIA TYPE IN LABOUR AND DELIVERY  
ANAESTHETIC METHOD TYPE FOR DIALYSIS ACCESS CONSTRUCTION  
ANAESTHETIC TYPE FOR JOINT REPLACEMENT  
ANTI CANCER REGIMEN NUMBER  
ARTERIOVENOUS GRAFT MATERIAL TYPE  
ARTIFICIAL RUPTURE OF MEMBRANES REASON CODE  
ASA PHYSICAL STATUS CLASSIFICATION SYSTEM CODE  
ASSOCIATED PROCEDURE TYPE FOR ANKLE REPLACEMENT  
BILIARY STENT INSERTION REASON  
BIOLOGICAL RESURFACING TYPE  
BLOOD FLOW RATE  
BLOOD TRANSFUSION PRODUCT TYPE  
BLOOD TRANSFUSION TYPE  
BLOOD TRANSFUSION UNITS TRANSFUSED  
BONEGRAFT INDICATOR FOR JOINT REPLACEMENT  
BONEGRAFT INDICATOR FOR REVISION ANKLE REPLACEMENT  
BONEGRAFT TYPE FOR JOINT REPLACEMENT  
BRACHYTHERAPY TYPE  
BREAST ASSESSMENT OUTCOME  
BREAST SCREENING TEST OUTCOME  
CANCER IMAGING MODALITY  
CANCER TREATMENT MODALITY  
CHEMICAL THROMBO PROPHYLAXIS REGIME TYPE  
CHEMO RADIATION INDICATOR  
CHEMOTHERAPY ACTUAL DOSE  
CHEST DRAIN IN SITU INDICATOR  
CLINICAL INTERVENTION TYPE  
CLINICAL INVESTIGATION NOT PERFORMED REASON CODE FOR MATERNITY  
CO MORBIDITY ADJUSTMENT INDICATOR  
COMPLICATION TYPE FOR RENAL DIALYSIS ACCESS  
COMPONENT REMOVAL INDICATOR  
CONTINUOUS INFUSION OF PULMONARY VASODILATOR RECEIVED INDICATOR  
CONTINUOUS POSITIVE AIRWAY PRESSURE DELIVERY MODE  
CONTRACEPTION METHOD STATUS  
CYTOLOGY SCREENING ACTION TYPE  
DELIVERED IN WATER INDICATOR

DELIVERY INSTRUMENT TYPE  
DELIVERY OF PLACENTA METHOD  
~~DENTAL TREATMENT CLASSIFICATION~~  
DRUG ADMINISTRATION DURATION  
DRUG ADMINISTRATION STATUS  
DRUG DAYS SUPPLY  
DRUG DOSAGE AND ADMIN SPECIFICATION  
DRUG IDENTIFICATION  
DRUG INFORMATION COMMENT  
DRUG INFORMATION TYPE  
DRUG QUANTITY SUPPLIED  
DRUG REGIMEN ACRONYM  
DRUG TREATMENT COST  
DRUG TREATMENT INTENT  
ENDOSCOPIC OR RADIOLOGICAL COMPLICATION TYPE  
ENDOSCOPIC PROCEDURE TYPE  
ENTERAL FEEDING METHOD  
ENTERAL FEED TYPE GIVEN  
EPISIOTOMY PERFORMED REASON CODE  
EXCISION TYPE  
FETAL ORDER  
FIRST DEFINITIVE TREATMENT PROVIDED  
FIRST DIAGNOSTIC TEST  
FIXATION TYPE FOR ELBOW OR SHOULDER REPLACEMENT  
FORMULA MILK OR MILK FORTIFIER TYPE  
FRACTION NUMBER  
HIP SURGERY PATIENT POSITION  
IMAGE GUIDED SURGERY INDICATOR  
IMAGING ANATOMICAL SITE  
IMAGING INTERVENTION INDICATOR  
IMAGING MODALITY  
IMAGING OR RADIODIAGNOSTIC EVENT INDICATION CODE FOR RENAL CARE  
IMMUNITY TEST RESULT  
INFECTION CULTURE TEST INDICATOR  
INTERVENTION SESSION TYPE  
INTRAPARTUM ANTIBIOTICS GIVEN INDICATOR  
JOINT REPLACEMENT REVISION REASON CODE FOR ANKLE  
JOINT REPLACEMENT REVISION REASON CODE FOR ELBOW  
JOINT REPLACEMENT REVISION REASON CODE FOR HIP  
JOINT REPLACEMENT REVISION REASON CODE FOR KNEE  
JOINT REPLACEMENT REVISION REASON CODE FOR SHOULDER  
KIDNEY TRANSPLANTED CODE  
LABOUR FIRST STAGE LENGTH  
LABOUR OR DELIVERY ONSET METHOD  
LABOUR PROFESSIONAL PRIOR INVOLVEMENT  
LABOUR SECOND STAGE LENGTH  
LAPAROTOMY FOR NECROTISING ENTEROCOLITIS INDICATION CODE  
LONG HEAD BICEPS TENOTOMY INDICATOR  
MARGIN INVOLVED INDICATION CODE  
MATERNAL CRITICAL INCIDENT TYPE CODE  
MECHANICAL THROMBO PROPHYLAXIS REGIME TYPE  
MINIMALLY INVASIVE SURGERY INDICATOR  
MINOR SURGERY TYPE  
MORE THAN THREE RECTAL WASHOUTS RECEIVED INDICATOR  
NATURE OF RISK AREA CODE  
NEOADJUVANT THERAPY INDICATOR  
NEONATAL CRITICAL INCIDENT TYPE CODE

NEONATAL RESUSCITATION METHOD  
NEONATAL RESUSCITATION METHOD FOR NATIONAL NEONATAL DATA SET  
NEPHRECTOMY TYPE  
NEURODEVELOPMENTAL ASSESSMENT ALREADY TAKEN INDICATOR  
NEWBORN HEARING INCOMPLETE REASON CODE  
NEWBORN HEARING SCREENING TEST TYPE  
NITRIC OXIDE GIVEN INDICATOR  
NUMBER OF TELETHERAPY FIELDS  
OPERATIVE PROCEDURE INDICATOR  
OPPORTUNISTIC SCREENING TYPE  
PAIN RELIEF TYPE IN LABOUR AND DELIVERY  
PARENTAL CONSENT TO ADMINISTER VITAMIN K INDICATOR  
PARENTAL CONSENT TO POST MORTEM INDICATOR  
PARENTERAL NUTRITION RECEIVED INDICATOR  
PATHOLOGY INVESTIGATION PRIORITY  
PATHOLOGY RESULT REPORTED DATE  
PATIENT PROCEDURE PERFORMED INDICATOR  
PATIENT PROCEDURE TYPE FOR PRIMARY ANKLE REPLACEMENT  
PATIENT PROCEDURE TYPE FOR PRIMARY ELBOW REPLACEMENT  
PATIENT PROCEDURE TYPE FOR PRIMARY HIP REPLACEMENT  
PATIENT PROCEDURE TYPE FOR PRIMARY KNEE REPLACEMENT  
PATIENT PROCEDURE TYPE FOR PRIMARY SHOULDER REPLACEMENT  
PATIENT PROCEDURE TYPE FOR REVISION ANKLE REPLACEMENT  
PATIENT PROCEDURE TYPE FOR REVISION ELBOW REPLACEMENT  
PATIENT PROCEDURE TYPE FOR REVISION HIP REPLACEMENT  
PATIENT PROCEDURE TYPE FOR REVISION KNEE REPLACEMENT  
PATIENT PROCEDURE TYPE FOR REVISION SHOULDER REPLACEMENT  
PERFORATIONS OR SEROSAL INVOLVEMENT INDICATION CODE  
PERITONEAL DIALYSIS CATHETER INSERTION TECHNIQUE  
PERITONEAL DIALYSIS CATHETER TYPE  
PLANE OF SURGICAL EXCISION TYPE  
PLANNED TREATMENT CHANGE REASON  
POST MORTEM CARRIED OUT INDICATOR  
POST MORTEM CONFIRMED NECROTISING ENTEROCOLITIS DIAGNOSIS INDICATOR  
POST MORTEM TYPE  
PREVIOUS BONY INFECTION INDICATOR OF TIBIA OR HINDFOOT  
PREVIOUS FRACTURE INDICATOR FOR ANKLE REPLACEMENT  
PREVIOUS SURGERY TYPE FOR ANKLE JOINT  
PREVIOUS SURGERY TYPE FOR SHOULDER REPLACEMENT  
PRIMARY SCREENING  
PRINCIPAL DIAGNOSTIC IMAGING TYPE  
PROCEDURE RENAL DIALYSIS ACCESS REPAIR OR REVISION TYPE  
PROCEDURE SIDE RENAL DIALYSIS ACCESS CONSTRUCTION CODE  
PROCEDURE SITE RENAL DIALYSIS ACCESS CONSTRUCTION CODE  
RADIOISOTOPE  
RADIOLOGICAL PROCEDURE TYPE  
RADIOTHERAPY ACTUAL DOSE  
RADIOTHERAPY BEAM TYPE  
RADIOTHERAPY PRESCRIBED DOSE  
RADIOTHERAPY TREATMENT MODALITY  
REMOVAL REASON TYPE FOR DIALYSIS ACCESS  
RENAL DIALYSIS ACCESS TYPE  
RENAL TRANSPLANT FAILURE CAUSE CODE  
REPLOGLE TUBE IN SITU INDICATOR  
RESPIRATORY SUPPORT DEVICE TYPE FOR NATIONAL NEONATAL DATA SET  
RESPIRATORY SUPPORT MODE FOR NATIONAL NEONATAL DATA SET  
RESULT SENT DIRECT

RETINOPATHY OF PREMATURITY SCREENING OUTCOME STATUS CODE  
REVISION PROCEDURE TYPE FOR ANKLE OR KNEE REPLACEMENT  
REVISION PROCEDURE TYPE FOR ELBOW OR SHOULDER REPLACEMENT  
REVISION PROCEDURE TYPE FOR HIP REPLACEMENT  
ROTATOR CUFF CONDITION  
ROUTINE OR EMERGENCY  
RUPTURE OF MEMBRANES METHOD  
SARCOMA SURGICAL MARGIN  
SCHEDULED SESSION DURING OR OUTSIDE  
SENTINEL LYMPH NODE BIOPSY TYPE  
SIGNIFICANT MATERNAL PYREXIA IN LABOUR INDICATOR  
STEM CELL INFUSION DONOR TYPE  
STEM CELL INFUSION SOURCE CODE  
STENT DEPLOYED SUCCESS INDICATOR  
STEROIDS GIVEN DURING PREGNANCY TO MATURE FETAL LUNGS INDICATOR  
STOMA PRESENT INDICATOR  
SURGICAL ACCESS TYPE  
SURGICAL ACCESS TYPE FOR THORACIC  
SURGICAL APPROACH FOR PRIMARY HIP REPLACEMENT  
SURGICAL APPROACH FOR PRIMARY KNEE REPLACEMENT  
SURGICAL APPROACH FOR PRIMARY OR REVISION ANKLE REPLACEMENT  
SURGICAL APPROACH FOR PRIMARY OR REVISION SHOULDER REPLACEMENT  
SURGICAL APPROACH FOR REVISION HIP REPLACEMENT  
SURGICAL APPROACH FOR REVISION KNEE REPLACEMENT  
SURGICAL COMPLICATION TYPE  
SURGICAL DEFAULT TECHNIQUE INDICATOR  
SURGICAL PALLIATION TYPE  
SURGICAL VOICE RESTORATION PERMANENT VALVE REMOVAL REASON  
SYSTEMIC ANTI CANCER THERAPY DRUG ROUTE OF ADMINISTRATION  
SYSTEMIC ANTI CANCER THERAPY PROGRAMME NUMBER  
SYSTEMIC ANTI CANCER THERAPY REGIMEN MODIFICATION INDICATOR  
TELE THERAPY BEAM TYPE  
TELE THERAPY ELECTRON ENERGY  
TELE THERAPY PHOTON ENERGY  
TRACHEOSTOMY TUBE IN SITU INDICATOR  
TREATMENT TYPE FOR NECROTISING ENTEROCOLITIS  
TREATMENT TYPE FOR PATENT DUCTUS ARTERIOSUS  
UNPLANNED OPERATION INDICATOR  
UNTOWARD INTRAOPERATIVE EVENT CODE FOR ANKLE REPLACEMENT  
UNTOWARD INTRAOPERATIVE EVENT CODE FOR ELBOW REPLACEMENT  
UNTOWARD INTRAOPERATIVE EVENT CODE FOR HIP REPLACEMENT  
UNTOWARD INTRAOPERATIVE EVENT CODE FOR KNEE REPLACEMENT  
UNTOWARD INTRAOPERATIVE EVENT CODE FOR SHOULDER REPLACEMENT  
VACCINATION REASON INDICATOR  
VASCULAR LINE TYPE IN SITU  
VISUAL INSPECTION CONFIRMED NECROTISING ENTEROCOLITIS DURING LAPAROTOMY INDICATOR  
VITAMIN K ADMINISTERED INDICATOR  
VITAMIN K ROUTE OF ADMINISTRATION

---

## GENERAL DENTAL PRACTITIONER

---

Change to Class: Changed Attributes

*Attributes of this Class are:*

~~DDP CODE~~  
GENERAL DENTAL COUNCIL REGISTRATION NUMBER  
GENERAL DENTAL PRACTITIONER CODE



---

## HEALTH PROGRAMME

---

Change to Class: Changed Relationships, Attributes

*Attributes of this Class are:*

BREAST SCREENING AGE GROUP FOR KC62 PARTS 1 TO 3  
BREAST SCREENING AGE GROUP FOR KC62 PARTS 4 TO 5  
BREAST SCREENING AGE GROUP FOR KC63  
BREAST SCREENING READING TYPE  
CERVICAL SCREENING RECALL INTERVAL  
COMMUNITY NURSE STAFF GROUP  
CONTACT TRACING DISEASE TYPE  
HEALTH PROGRAMME TYPE  
HEALTH PROMOTION PROGRAMME AIM  
IMMUNISATION AGE GROUP  
IMMUNISATION PROGRAMME TYPE  
~~ORAL HEALTH AGE GROUP~~  
SCREENING CONDITION OR DISEASE  
~~SCREENING OR PROMOTION INDICATOR~~  
SURVEILLANCE PROGRAMME GROUP  
VACCINE PREVENTABLE DISEASE

---

## HEALTH PROGRAMME

---

Change to Class: Changed Relationships, Attributes

*Each HEALTH PROGRAMME*

K must be led by one and only one ORGANISATION  
may be resultant in one or more ACTIVITY  
may be resultant in one or more APPOINTMENT OFFER  
may be subdivided into one or more HEALTH PROGRAMME  
may be a subdivision of one HEALTH PROGRAMME  
may be targeting one or more HEALTH PROGRAMME POPULATION  
may be broken into one or more HEALTH PROGRAMME STAGE  
may be the supplier of one or more IMMUNISATION COURSE TYPE  
may be related to one or more PERSON IN PROGRAMME  
may be offering one or more SERVICE REQUEST  
~~may be related to one or more STAFF MEMBER IN PROGRAMME~~

---

## REFERRAL REQUEST

---

Change to Class: Changed Attributes

*Attributes of this Class are:*

BENIGN THERAPEUTIC OPERATION INDICATOR  
COLPOSCOPY REFERRAL INDICATION  
COMMISSIONER REFERENCE NUMBER  
OTHER REFERRER CODE  
OUT-PATIENT CLINIC REFERRING INDICATOR  
REASON FOR REFERRAL TO COMMUNITY CARE  
REFERRAL CLOSURE REASON FOR COMMUNITY CARE  
REFERRAL REQUEST ACCEPTANCE INDICATOR  
REFERRAL REQUEST RECEIVED TIME  
REFERRAL REQUEST SERVICE TYPE FOR NHS HEALTH CHECK  
REFERRAL REQUEST TYPE  
SCREENING REFERRAL SOURCE  
SERVICE TYPE REQUESTED  
SERVICE TYPE REQUESTED FOR CHILD AND ADOLESCENT MENTAL HEALTH

SOURCE OF REFERRAL FOR A and E  
SOURCE OF REFERRAL FOR COMMUNITY  
~~SOURCE OF REFERRAL FOR COMMUNITY DENTAL~~  
SOURCE OF REFERRAL FOR DRUG MISUSE  
SOURCE OF REFERRAL FOR MENTAL HEALTH  
SOURCE OF REFERRAL FOR OUT-PATIENTS  
SOURCE OF REFERRAL FOR PROF STAFF GROUP  
TWO WEEK WAIT CANCER OR SYMPTOMATIC BREAST REFERRAL TYPE  
TWO WEEK WAIT EXCLUSION INDICATOR

---

## REPORTING PERIOD

---

Change to Class: Changed Relationships

*Each REPORTING PERIOD*

- may be for one or more ORGANISATION REPORTING PERIOD
  - may be allocated during one or more SERVICE FINANCIAL ALLOCATION
  - ~~may be related to one or more STAFF MEMBER IN PERIOD~~
  - ~~may be related to one or more STAFF MEMBER IN PROGRAMME IN PERIOD~~
- 

## STAFF MEMBER IN PERIOD (RETIRED)\_ renamed from STAFF MEMBER IN PERIOD

---

Change to Class: Changed Name, status to Retired, Description

~~A member of staff involved in the treatment of [PATIENTS](#) during a financial period.~~ **This item has been retired from the NHS Data Model and Dictionary.**

**The last live version of this item is available in the February 2014 release of the NHS Data Model and Dictionary.**

**Access to this version can be obtained by emailing [information.standards@hscic.gov.uk](mailto:information.standards@hscic.gov.uk) with "NHS Data Model and Dictionary - Archive Request" in the email subject line.**

---

## STAFF MEMBER IN PERIOD (RETIRED)\_ renamed from STAFF MEMBER IN PERIOD

---

Change to Class: Changed Name, status to Retired, Description

- Changed Name from `Data_Dictionary.Classes.S.STAFF_MEMBER_IN_PERIOD` to `Retired.Data_Dictionary.Classes.S.STAFF_MEMBER_IN_PERIOD`
  - Retired STAFF MEMBER IN PERIOD
  - Changed Description
- 

## STAFF MEMBER IN PROGRAMME (RETIRED)\_ renamed from STAFF MEMBER IN PROGRAMME

---

Change to Class: Changed Name, Relationships, status to Retired, Description

~~A member of staff involved in work on a [HEALTH PROGRAMME](#).~~ **This item has been retired from the NHS Data Model and Dictionary.**

**The last live version of this item is available in the February 2014 release of the NHS Data Model and Dictionary.**

**Access to this version can be obtained by emailing [information.standards@hscic.gov.uk](mailto:information.standards@hscic.gov.uk) with "NHS Data Model and Dictionary - Archive Request" in the email subject line.**

---

## STAFF MEMBER IN PROGRAMME (RETIRED)\_ renamed from STAFF MEMBER IN PROGRAMME

---

Change to Class: Changed Name, Relationships, status to Retired, Description

~~Each STAFF MEMBER IN PROGRAMME~~

- ~~↳ must be related to one and only one CARE PROFESSIONAL~~
- ~~↳ must be related to one and only one HEALTH PROGRAMME~~
- ~~may be related to one or more STAFF MEMBER IN PROGRAMME IN PERIOD~~

---

## STAFF MEMBER IN PROGRAMME (RETIRED)\_ renamed from STAFF MEMBER IN PROGRAMME

---

Change to Class: Changed Name, Relationships, status to Retired, Description

- Changed Name from Data\_Dictionary.Classes.S.STAFF\_MEMBER\_IN\_PROGRAMME to Retired.Data\_Dictionary.Classes.S.STAFF\_MEMBER\_IN\_PROGRAMME
- Changed Relationships
- Retired STAFF MEMBER IN PROGRAMME
- Changed Description

---

## STAFF MEMBER IN PROGRAMME IN PERIOD (RETIRED)\_ renamed from STAFF MEMBER IN PROGRAMME IN PERIOD

---

Change to Class: Changed Name, status to Retired, Description

~~A member of staff involved in work on a [HEALTH PROGRAMME](#) during one financial period.~~ **This item has been retired from the NHS Data Model and Dictionary.**

**The last live version of this item is available in the February 2014 release of the NHS Data Model and Dictionary.**

**Access to this version can be obtained by emailing [information.standards@hscic.gov.uk](mailto:information.standards@hscic.gov.uk) with "NHS Data Model and Dictionary - Archive Request" in the email subject line.**

---

## STAFF MEMBER IN PROGRAMME IN PERIOD (RETIRED)\_ renamed from STAFF MEMBER IN PROGRAMME IN PERIOD

---

Change to Class: Changed Name, status to Retired, Description

- Changed Name from Data\_Dictionary.Classes.S.STAFF\_MEMBER\_IN\_PROGRAMME\_IN\_PERIOD to Retired.Data\_Dictionary.Classes.S.STAFF\_MEMBER\_IN\_PROGRAMME\_IN\_PERIOD
- Retired STAFF MEMBER IN PROGRAMME IN PERIOD
- Changed Description

---

## ACTIVITY GROUP TYPE

---

Change to Attribute: Changed Description

The type of [ACTIVITY GROUP](#).

National Codes:

- 01 [Accident and Emergency Episode](#)
- 02 Acute Myocardial Infarction Care Spell (Retired July 2012)
- 03 Augmented Care Period (Retired 1 April 2006)
- 04 [Breast Cancer Care Spell](#)
- 05 [Cancer Care Spell](#)

06 [Care Home Stay \(Consultant Care\)](#)  
07 [Care Home Stay \(Midwife Care\)](#)  
08 [Care Home Stay \(Nursing Care\)](#)  
09 [Care Home Stay \(Residential\)](#)  
10 [Care Programme Approach Episode](#)  
11 [Colorectal Cancer Care Spell](#)  
12 [Community Episode](#)  
13 [Mental Health Care Professional Episode \(Acute Home-Based\)](#)  
14 [Consultant Episode \(Hospital Provider\)](#)  
15 [Consultant Out-Patient Episode](#)  
16 [Dental Episode](#)  
16 [Dental Episode \(Retired 01 April 2014\)](#)  
17 [Drug Misuse Episode](#)  
18 [Sexual Health And HIV Episode](#)  
19 [Head and Neck Cancer Care Spell](#)  
20 [Home Dialysis Episode](#)  
21 [Hospital Provider Spell](#)  
22 [Lung Cancer Care Spell](#)  
23 [Adult Mental Health Care Spell](#)  
24 [Midwife Episode](#)  
25 [Neonatal Level Of Care Period](#)  
26 [Nursing Episode](#)  
27 [Palliative Care Episode](#)  
28 [Person Stop Smoking Episode](#)  
29 [Pregnancy Episode](#)  
30 [Professional Staff Group Episode](#)  
31 [Regular Attender Episode](#)  
32 Road Traffic Accident Treatment  
33 [Sarcoma Care Spell](#)  
34 [Skin Cancer Care Spell](#)  
35 Supervised Discharge Episode (Retired 01 April 2014)  
36 Supervision Register Episode (Retired 01 April 2014)  
37 [Upper Gastrointestinal Cancer Care Spell](#)  
38 [Urological Cancer Care Spell](#)  
39 [Ward Stay](#)  
40 [Hospital Stay](#)  
41 [Care Spell](#)  
42 [CRITICAL CARE PERIOD](#)  
43 [PATIENT PATHWAY](#)  
44 [REFERRAL TO TREATMENT PERIOD](#)  
45 [Active Monitoring](#)  
46 [Supervised Community Treatment Recall](#)  
47 [Supervised Community Treatment](#)  
48 [Mental Health Care Without Patient Consent](#)  
49 [Cancer Treatment Period](#)  
50 [Gynaecological Cancer Care Spell](#)  
51 [Mental Health Care Spell](#)  
52 [Improving Access to Psychological Therapies Care Spell](#)  
53 [Adult Mental Health Care Team Episode](#)  
54 [Mental Health NHS Day Care Episode](#)  
55 [Mental Health Delayed Discharge Period](#)  
56 [Mental Health Care Cluster Assignment Period](#)  
57 [Mental Health Care Coordinator Assignment](#)  
58 [Child and Adolescent Mental Health Clinical Intervention Episode](#)  
59 [Child and Adolescent Mental Health Care Spell](#)  
60 [Maternity Episode](#)  
61 [HIV Episode](#)  
62 [Central Nervous System Cancer Care Spell](#)  
63 [Children Teenagers and Young Adults Cancer Care Spell](#)  
64 [Haematology Cancer Care Spell](#)  
65 [Lung Cancer Care Spell](#)

- 66 [Commissioner Assignment Period](#)
- 67 [Breast Screening Episode](#)
- 68 [High Risk Breast Screening Episode](#)
- 69 [Open Breast Screening Episode](#)
- 70 [Neonatal Critical Care Spell](#)
- 71 [Radiotherapy Episode](#)

Note:

The list is not in alphabetical order.

## CARE CONTACT TYPE

Change to Attribute: Changed Description

The type of [CARE CONTACT](#).

*National Codes:*

- 01 [Accident and Emergency Attendance](#)
- 02 [Acute Home-Based Contact](#)
- 03 [Audiology Attendance](#)
- 04 [Cancer Clinical Status Assessment](#)
- 05 [Care Programme Approach Review](#)
- 06 [Clinic Attendance Consultant](#)
- 07 [Clinic Attendance Sexual and Reproductive Health Service](#)
- 08 [Clinic Attendance Midwife](#)
- 09 [Clinic Attendance Non-Consultant](#)
- 10 [Clinic Attendance Nurse](#)
- 11 [Contact Tracing Activity](#)
- ~~12~~ [Dental Treatment Contact](#)
- 12 [Dental Treatment Contact \(Retired 01 April 2014\)](#)
- 13 [Day Care Attendance](#)
- 14 [Domiciliary Consultation](#)
- 15 Emergency Dental Attendance (Retired 01 April 2014)
- 16 [Face To Face Contact Community Care](#)
- 17 [Face To Face Contact CPA Care Coordinator](#)
- ~~18~~ [Face To Face Contact Dental](#)
- 18 [Face To Face Contact Dental \(Retired 01 April 2014\)](#)
- 19 Face To Face Contact Optical (Retired 01 April 2014)
- 20 Face To Face Contact Social Worker (Retired 01 April 2011)
- 21 [Face To Face Contact Surveillance](#)
- 22 [Sexual and Reproductive Health Domiciliary Visit](#)
- 23 [Genitourinary Consultant Clinic Attendance](#)
- 24 [GMP Consultation](#)
- 25 [GMP Practice Consultation](#)
- 26 [Home Assessment Visit](#)
- 27 [Maternity Domiciliary Visit](#)
- 28 Night Consultation Visit (Retired 01 April 2014)
- 29 [Nurse or Midwife Contact](#)
- 30 [Out-Patient Attendance Consultant](#)
- 31 Registration Health Check (Retired 01 April 2014)
- 32 Sheltered Work Attendance (Retired 01 April 2011)
- 33 Sight Test (Retired 01 April 2014)
- 34 [Social Services Statutory Assessment](#)
- 35 Professional Advice And Support Contact (Retired 01 April 2014)
- 36 [Professional Staff Group Contact](#)
- 37 Telephone Contact NHS Direct (Mental Health) (Retired 01 April 2011)
- 38 [Theatre Case](#)

- 39 [Ward Attendance](#)
- 40 Genitourinary Care Contact (Retired January 2014)
- 41 [Improving Access to Psychological Therapies Contact](#)
- 42 [NHS Health Check Assessment](#)
- 43 [Antenatal Booking Appointment](#)
- 44 [Pregnancy First Contact](#)
- 45 [Nutritional Assessment](#)
- 46 [HIV Clinic Attendance](#)
- 47 [Multi-Disciplinary Consultation \(Payment By Results\)](#)
- 48 [Multi-Professional Consultation \(Payment By Results\)](#)
- 49 [Two Year Neonatal Outcomes Assessment](#)
- 50 [Radiotherapy Attendance](#)

Note: The list is not in alphabetical order.

## CARE CONTACT TYPE FOR CHILDREN AND YOUNG PEOPLE'S HEALTH SERVICE SECONDARY USES

Change to Attribute: Changed Description

The type of [CARE CONTACT](#) for the purposes of the [Children and Young People's Health Service Secondary Uses Data Set](#).

This includes where the [Child or Young Person](#) may or may not be present (e.g. telephone call between [CARE PROFESSIONALS](#)).

*National Codes:*

- 01 Allied Health Professional Contact
- 02 [CONSULTANT](#) Contact
- 03 [MIDWIFE](#) Contact
- 04 Non-Consultant Contact
- 05 [NURSE](#) Contact
- ~~06~~ [Dental Treatment Contact](#)
- 06 [Dental Treatment Contact](#)
- 07 Community Care Contact
- 08 [GMP Consultation](#)
- 09 [Professional Staff Group Contact](#)
- 10 [Specialist Community Public Health Nurse: Health Visitor](#) Contact
- 11 Registration Health Check
- 12 Professional Advice And Support Contact
- 13 [School](#) Contact
- 97 Other (not otherwise specified)
- 98 Not Specified

## CLINICAL INTERVENTION TYPE

Change to Attribute: Changed Description

The type of [CLINICAL INTERVENTION](#).

*National Codes:*

- 01 Anaesthetic Service (Retired November 2013)
- 02 [Anti-Cancer Drug Cycle](#)
- 03 Anti-Cancer Drug Fraction (Retired 1 January 2013)

04 [Anti-Cancer Drug Programme](#)  
05 [Anti-Cancer Drug Regimen](#)  
06 [Brachytherapy Treatment Course](#)  
07 Contraceptive Service (Retired November 2013)  
08 Dental Haemorrhage Service (Retired November 2013)  
09 [Dental Treatment](#)  
09 [Dental Treatment \(Retired 01 April 2014\)](#)  
10 Drug Dosage and Administration (Retired 1 January 2013)  
11 [Drug Treatment](#)  
12 Emergency Treatment Service (Retired November 2013)  
13 Endocrine Therapy (Retired 1 January 2013)  
14 [Fraction](#)  
15 [Primary Hip Replacement Surgery](#)  
16 [Imaging or Radiodiagnostic Event](#)  
17 [Immunisation Dose Given](#)  
18 [Joint Replacement Surgery](#)  
19 [Primary Knee Replacement Surgery](#)  
20 [Labour and Delivery](#)  
21 Lithotripsy Course Attendance (Retired 1 April 2014)  
22 Maternity Medical Service (Retired November 2013)  
23 Minor Surgery Procedure (Retired November 2013)  
24 [Pathology Laboratory Investigation](#)  
25 [Patient Procedure](#)  
26 [Post Mortem](#)  
27 [Radiotherapy Treatment Course](#)  
28 Screening Test (Retired November 2013)  
29 Teletherapy Treatment Course (Retired 1 April 2014)  
30 Test Of Immunity (Retired November 2013)  
31 Therapy After Discharge (Retired July 2012)  
32 [Thrombo Prophylaxis Regime](#)  
33 Unsealed Source Treatment Course (Retired 1 April 2014)  
34 Vaccination Service (Retired November 2013)  
35 Vasectomy Performed (Retired November 2013)  
36 [Clinical Investigation](#)  
37 [Systemic Anti-Cancer Drug Cycle](#)  
38 [Systemic Anti-Cancer Drug Programme](#)  
39 [Systemic Anti-Cancer Drug Regimen](#)  
40 [Chemotherapy](#)  
41 [Cytotoxic Chemotherapy](#)  
42 [Hormone Therapy](#)  
43 [Immunotherapy](#)  
44 [Diagnostic Imaging](#)  
45 [6 - 8 Week Physical Examination](#)  
46 [Ultrasound Scan In Pregnancy](#)  
47 [Newborn Physical Examination](#)  
48 [Biological Therapy](#)  
49 [Brachytherapy](#)  
50 [Chemoradiotherapy](#)  
51 [Cryotherapy](#)  
52 [High Intensity Focused Ultrasound](#)  
53 [Hyperbaric Oxygen Therapy](#)  
54 [Laser Treatment](#)  
55 [Light Therapy](#)  
56 [Photodynamic Therapy](#)  
57 [Proton Therapy](#)  
58 [Psoralen and Ultraviolet A Therapy](#)  
59 [Radiofrequency Ablation](#)  
60 [Radioisotope Therapy](#)  
61 [Radiosurgery](#)  
62 [Radiotherapy](#)  
63 [Teletherapy](#)

- 64 [Tissue Typing](#)
- 65 [Blood Transfusion](#)
- 66 [Renal Dialysis](#)
- 67 [Antiretroviral Therapy](#)
- 68 [Drug Regimen](#)
- 69 [Ablative Therapy](#)
- 70 [Laparoscopy](#)
- 71 [Primary Ankle Replacement Surgery](#)
- 72 [Revision Ankle Replacement Surgery](#)
- 73 [Primary Elbow Replacement Surgery](#)
- 74 [Revision Elbow Replacement Surgery](#)
- 75 [Revision Hip Replacement Surgery](#)
- 76 [Revision Knee Replacement Surgery](#)
- 77 [Primary Shoulder Replacement Surgery](#)
- 78 [Revision Shoulder Replacement Surgery](#)
- 79 [Oxygen Therapy](#)
- 80 [Therapeutic Hypothermia](#)
- 81 [Parenteral Nutrition](#)
- 82 [Enteral Feeding](#)
- 83 [Radiotherapy Exposure](#)

#### DDP CODE (RETIRED)\_ renamed from DDP CODE

Change to Attribute: Changed Name, status to Retired, Description

~~A [DDP CODE](#) for a [GENERAL DENTAL PRACTITIONER](#). This item has been retired from the NHS Data Model and Dictionary.~~

~~The last live version of this item is available in the February 2014 release of the NHS Data Model and Dictionary.~~

~~Access to this version can be obtained by emailing [information.standards@hscic.gov.uk](mailto:information.standards@hscic.gov.uk) with "NHS Data Model and Dictionary - Archive Request" in the email subject line.~~

#### DDP CODE (RETIRED)\_ renamed from DDP CODE

Change to Attribute: Changed Name, status to Retired, Description

- Changed Name from `Data_Dictionary.Attributes.D.DDP_CODE` to `Retired.Data_Dictionary.Attributes.D.DDP_CODE`
- Retired DDP CODE
- Changed Description

#### DENTAL HAEMORRHAGE SERVICE TYPE (RETIRED)\_ renamed from DENTAL HAEMORRHAGE SERVICE TYPE

Change to Attribute: Changed Name, status to Retired, Description

~~The type of dental [ACTIVITY](#) provided by the [GENERAL MEDICAL PRACTITIONER](#). This item has been retired from the NHS Data Model and Dictionary.~~

~~*Classification:* The last live version of this item is available in the February 2014 release of the NHS Data Model and Dictionary.~~

- ~~a: Arresting of dental haemorrhage or provision of after care~~
- ~~b: Removal of plugs and/or stitches only~~



Access to this version can be obtained by emailing [information.standards@hscic.gov.uk](mailto:information.standards@hscic.gov.uk) with "NHS Data Model and Dictionary - Archive Request" in the email subject line.

---

## DENTAL HAEMORRHAGE SERVICE TYPE (RETIRED)\_ renamed from DENTAL HAEMORRHAGE SERVICE TYPE

---

Change to Attribute: Changed Name, status to Retired, Description

- Changed Name from Data\_Dictionary.Attributes.D.Den.DENTAL\_HAEMORRHAGE\_SERVICE\_TYPE to Retired.Data\_Dictionary.Attributes.D.DENTAL\_HAEMORRHAGE\_SERVICE\_TYPE
- Retired DENTAL HAEMORRHAGE SERVICE TYPE
- Changed Description

---

## DENTAL REFERRAL INDICATOR (RETIRED)\_ renamed from DENTAL REFERRAL INDICATOR

---

Change to Attribute: Changed Name, status to Retired, Description

~~An indication of whether a [PATIENT](#) is referred for further attention following screening during a [Face To Face Contact Dental](#). This item has been retired from the NHS Data Model and Dictionary.~~

~~*Classification:* The last live version of this item is available in the February 2014 release of the NHS Data Model and Dictionary.~~

- a. Yes
- b. No

Access to this version can be obtained by emailing [information.standards@hscic.gov.uk](mailto:information.standards@hscic.gov.uk) with "NHS Data Model and Dictionary - Archive Request" in the email subject line.

---

## DENTAL REFERRAL INDICATOR (RETIRED)\_ renamed from DENTAL REFERRAL INDICATOR

---

Change to Attribute: Changed Name, status to Retired, Description

- Changed Name from Data\_Dictionary.Attributes.D.Den.DENTAL\_REFERRAL\_INDICATOR to Retired.Data\_Dictionary.Attributes.D.DENTAL\_REFERRAL\_INDICATOR
- Retired DENTAL REFERRAL INDICATOR
- Changed Description

---

## DENTAL TREATMENT CLASSIFICATION (RETIRED)\_ renamed from DENTAL TREATMENT CLASSIFICATION

---

Change to Attribute: Changed Name, status to Retired, Description

~~A classification of [Dental Treatment](#). This item has been retired from the NHS Data Model and Dictionary.~~

~~Each [Dental Episode](#) may involve more than one [Dental Treatment Contact](#) and each [Dental Treatment Contact](#) may involve more than one [Dental Treatment](#). The last live version of this item is available in the February 2014 release of the NHS Data Model and Dictionary.~~

~~Only general anaesthesia, sedation and orthodontics are required for the purposes of recording [KC64](#) patient care treatment activity. Where there is more than one [Dental Treatment Contact](#) within a [Dental Episode](#) which entails more than one [Dental Treatment](#) of general anaesthesia, sedation or orthodontics then only one occurrence per [Dental Episode](#) is required to be recorded by [KC64](#). Access to this version can be obtained by emailing [information.standards@hscic.gov.uk](mailto:information.standards@hscic.gov.uk) with "NHS Data Model and Dictionary - Archive Request" in the email subject line.~~

*Classification:*

- a: Preventive treatment or counselling
- b: General anaesthesia
- c: Sedation
- d: Orthodontics
- e: Prosthetics
- f: Scaling and polishing
- g: Periodontal treatment
- h: Restorative treatment
- i: Other

---

## DENTAL TREATMENT CLASSIFICATION (RETIRED)\_ renamed from DENTAL TREATMENT CLASSIFICATION

---

Change to Attribute: Changed Name, status to Retired, Description

- Changed Name from Data\_Dictionary.Attributes.D.Den.DENTAL\_TREATMENT\_CLASSIFICATION to Retired.Data\_Dictionary.Attributes.D.DENTAL\_TREATMENT\_CLASSIFICATION
- Retired DENTAL TREATMENT CLASSIFICATION
- Changed Description

---

## GENERAL DENTAL SERVICE INDICATOR (RETIRED)\_ renamed from GENERAL DENTAL SERVICE INDICATOR

---

Change to Attribute: Changed Name, status to Retired, Description

~~An indicator to whether the initial contact followed as a result of the General Dental Service being unable to provide care.~~ **This item has been retired from the NHS Data Model and Dictionary.**

**The last live version of this item is available in the February 2014 release of the NHS Data Model and Dictionary.**

**Access to this version can be obtained by emailing [information.standards@hscic.gov.uk](mailto:information.standards@hscic.gov.uk) with "NHS Data Model and Dictionary - Archive Request" in the email subject line.**

---

## GENERAL DENTAL SERVICE INDICATOR (RETIRED)\_ renamed from GENERAL DENTAL SERVICE INDICATOR

---

Change to Attribute: Changed Name, status to Retired, Description

- Changed Name from Data\_Dictionary.Attributes.G.GENERAL\_DENTAL\_SERVICE\_INDICATOR to Retired.Data\_Dictionary.Attributes.G.GENERAL\_DENTAL\_SERVICE\_INDICATOR
- Retired GENERAL DENTAL SERVICE INDICATOR
- Changed Description

---

## HEALTH PROGRAMME TYPE

---

Change to Attribute: Changed Description

The type of [HEALTH PROGRAMME](#).

*National Codes:*

- 01 [Contact Tracing Programme](#)

- 02 [Health Promotion Programme](#)
- 03 [Nursing In The Community Programme](#)
- 04 [Oral Health Programme](#)
- 04 [Oral Health Programme \(Retired 01 April 2014\)](#)
- 05 [Professional Advice And Support Programme](#)
- 06 [Screening Programme](#)
- 07 [Surveillance Programme](#)
- 08 [Immunisation Programme](#)
- 09 [NHS Breast Screening Programme](#)

## HOURS WORKED IN PERIOD ON PROGRAMME (RETIRED)\_ renamed from HOURS WORKED IN PERIOD ON PROGRAMME

Change to Attribute: Changed Name, status to Retired, Description

The number of hours worked on an [Oral Health Programme](#) recorded for a [STAFF MEMBER IN PROGRAMME IN PERIOD](#). This item has been retired from the NHS Data Model and Dictionary.

Note: This does not include time spent on [Dental Treatment](#) or by Dental Officers on epidemiological surveys. The last live version of this item is available in the February 2014 release of the NHS Data Model and Dictionary.

Access to this version can be obtained by emailing [information.standards@hscic.gov.uk](mailto:information.standards@hscic.gov.uk) with "NHS Data Model and Dictionary - Archive Request" in the email subject line.

## HOURS WORKED IN PERIOD ON PROGRAMME (RETIRED)\_ renamed from HOURS WORKED IN PERIOD ON PROGRAMME

Change to Attribute: Changed Name, status to Retired, Description

- Changed Name from Data\_Dictionary.Attributes.H.Hom.HOURS\_WORKED\_IN\_PERIOD\_ON\_PROGRAMME to Retired.Data\_Dictionary.Attributes.H.HOURS\_WORKED\_IN\_PERIOD\_ON\_PROGRAMME
- Retired HOURS WORKED IN PERIOD ON PROGRAMME
- Changed Description

## HOURS WORKED IN PERIOD ON SURVEY (RETIRED)\_ renamed from HOURS WORKED IN PERIOD ON SURVEY

Change to Attribute: Changed Name, status to Retired, Description

The number of hours worked on epidemiological surveys by a Dental Officer in a [REPORTING PERIOD](#). This item has been retired from the NHS Data Model and Dictionary.

The last live version of this item is available in the February 2014 release of the NHS Data Model and Dictionary.

Access to this version can be obtained by emailing [information.standards@hscic.gov.uk](mailto:information.standards@hscic.gov.uk) with "NHS Data Model and Dictionary - Archive Request" in the email subject line.

## HOURS WORKED IN PERIOD ON SURVEY (RETIRED)\_ renamed from HOURS WORKED IN PERIOD ON SURVEY

Change to Attribute: Changed Name, status to Retired, Description

- Changed Name from Data\_Dictionary.Attributes.H.Hom.HOURS\_WORKED\_IN\_PERIOD\_ON\_SURVEY to

Retired.Data\_Dictionary.Attributes.H.HOURS\_WORKED\_IN\_PERIOD\_ON\_SURVEY

- Retired HOURS WORKED IN PERIOD ON SURVEY
- Changed Description

---

## HOURS WORKED IN PERIOD ON TREATMENT (RETIRED)\_ renamed from HOURS WORKED IN PERIOD ON TREATMENT

---

Change to Attribute: Changed Name, status to Retired, Description

The number of hours worked on [Dental Treatment](#) by a [STAFF\\_MEMBER\\_IN\\_PROGRAMME\\_IN\\_PERIOD](#). This item has been retired from the NHS Data Model and Dictionary.

The last live version of this item is available in the February 2014 release of the NHS Data Model and Dictionary.

Access to this version can be obtained by emailing [information.standards@hscic.gov.uk](mailto:information.standards@hscic.gov.uk) with "NHS Data Model and Dictionary - Archive Request" in the email subject line.

---

## HOURS WORKED IN PERIOD ON TREATMENT (RETIRED)\_ renamed from HOURS WORKED IN PERIOD ON TREATMENT

---

Change to Attribute: Changed Name, status to Retired, Description

- Changed Name from Data\_Dictionary.Attributes.H.Hom.HOURS\_WORKED\_IN\_PERIOD\_ON\_TREATMENT to Retired.Data\_Dictionary.Attributes.H.HOURS\_WORKED\_IN\_PERIOD\_ON\_TREATMENT
- Retired HOURS WORKED IN PERIOD ON TREATMENT
- Changed Description

---

## ORAL HEALTH AGE GROUP (RETIRED)\_ renamed from ORAL HEALTH AGE GROUP

---

Change to Attribute: Changed Name, status to Retired, Description

The classification of the age group for oral health screening and preventative programmes. This item has been retired from the NHS Data Model and Dictionary.

*Classification:* The last live version of this item is available in the February 2014 release of the NHS Data Model and Dictionary.

- a: Children 0-4
- b: Children 5-15
- c: Patients aged 16-64
- d: Patients aged 65 or over

Access to this version can be obtained by emailing [information.standards@hscic.gov.uk](mailto:information.standards@hscic.gov.uk) with "NHS Data Model and Dictionary - Archive Request" in the email subject line.

---

## ORAL HEALTH AGE GROUP (RETIRED)\_ renamed from ORAL HEALTH AGE GROUP

---

Change to Attribute: Changed Name, status to Retired, Description

- Changed Name from Data\_Dictionary.Attributes.O.ORAL\_HEALTH\_AGE\_GROUP to Retired.Data\_Dictionary.Attributes.O.ORAL\_HEALTH\_AGE\_GROUP
- Retired ORAL HEALTH AGE GROUP
- Changed Description

---

## SCREENING OR PROMOTION INDICATOR (RETIRED)\_ renamed from SCREENING OR PROMOTION INDICATOR

---

---

Change to Attribute: Changed Name, status to Retired, Description

~~An indicator as to whether the [Oral Health Programme](#) is a [Screening Programme](#) or a [Health Promotion Programme](#).~~ **This item has been retired from the NHS Data Model and Dictionary.**

**The last live version of this item is available in the February 2014 release of the NHS Data Model and Dictionary.**

**Access to this version can be obtained by emailing [information.standards@hscic.gov.uk](mailto:information.standards@hscic.gov.uk) with "NHS Data Model and Dictionary - Archive Request" in the email subject line.**

---

## SCREENING OR PROMOTION INDICATOR (RETIRED)\_ renamed from SCREENING OR PROMOTION INDICATOR

Change to Attribute: Changed Name, status to Retired, Description

- Changed Name from Data\_Dictionary.Attributes.S.Scr.SCREENING\_OR\_PROMOTION\_INDICATOR to Retired.Data\_Dictionary.Attributes.S.SCREENING\_OR\_PROMOTION\_INDICATOR
- Retired SCREENING OR PROMOTION INDICATOR
- Changed Description

---

## SOURCE OF REFERRAL FOR COMMUNITY DENTAL (RETIRED)\_ renamed from SOURCE OF REFERRAL FOR COMMUNITY DENTAL

Change to Attribute: Changed Name, status to Retired, Description

~~A classification of the source of a referral to the Community Dental Service which leads to an initial contact (and thus a new [Dental Episode](#)).~~ **This item has been retired from the NHS Data Model and Dictionary.**

~~*Classification:*~~ **The last live version of this item is available in the February 2014 release of the NHS Data Model and Dictionary.**

- a. Community Dental Service screening programme
- b. Other Dentist
- c. Recall
- d. Self
- e. Other

**Access to this version can be obtained by emailing [information.standards@hscic.gov.uk](mailto:information.standards@hscic.gov.uk) with "NHS Data Model and Dictionary - Archive Request" in the email subject line.**

---

## SOURCE OF REFERRAL FOR COMMUNITY DENTAL (RETIRED)\_ renamed from SOURCE OF REFERRAL FOR COMMUNITY DENTAL

Change to Attribute: Changed Name, status to Retired, Description

- Changed Name from Data\_Dictionary.Attributes.S.Smo.SOURCE\_OF\_REFERRAL\_FOR\_COMMUNITY\_DENTAL to Retired.Data\_Dictionary.Attributes.S.SOURCE\_OF\_REFERRAL\_FOR\_COMMUNITY\_DENTAL
- Retired SOURCE OF REFERRAL FOR COMMUNITY DENTAL
- Changed Description

---

## STAFF MEMBER IN PROGRAMME END DATE (RETIRED)\_ renamed from STAFF MEMBER IN PROGRAMME END DATE

Change to Attribute: Changed Name, status to Retired, Description

The date a [CARE PROFESSIONAL](#) ceased to be involved in work on a [HEALTH PROGRAMME](#). This item has been retired from the NHS Data Model and Dictionary.

The last live version of this item is available in the February 2014 release of the NHS Data Model and Dictionary.

Access to this version can be obtained by emailing [information.standards@hscic.gov.uk](mailto:information.standards@hscic.gov.uk) with "NHS Data Model and Dictionary - Archive Request" in the email subject line.

---

### STAFF MEMBER IN PROGRAMME END DATE (RETIRED)\_ renamed from STAFF MEMBER IN PROGRAMME END DATE

---

Change to Attribute: Changed Name, status to Retired, Description

- Changed Name from Data\_Dictionary.Attributes.S.Spe.STAFF\_MEMBER\_IN\_PROGRAMME\_END\_DATE to Retired.Data\_Dictionary.Attributes.S.STAFF\_MEMBER\_IN\_PROGRAMME\_END\_DATE
- Retired STAFF MEMBER IN PROGRAMME END DATE
- Changed Description

---

### STAFF MEMBER IN PROGRAMME START DATE (RETIRED)\_ renamed from STAFF MEMBER IN PROGRAMME START DATE

---

Change to Attribute: Changed Name, status to Retired, Description

The date a [CARE PROFESSIONAL](#) started to be involved in work on a [HEALTH PROGRAMME](#). This item has been retired from the NHS Data Model and Dictionary.

The last live version of this item is available in the February 2014 release of the NHS Data Model and Dictionary.

Access to this version can be obtained by emailing [information.standards@hscic.gov.uk](mailto:information.standards@hscic.gov.uk) with "NHS Data Model and Dictionary - Archive Request" in the email subject line.

---

### STAFF MEMBER IN PROGRAMME START DATE (RETIRED)\_ renamed from STAFF MEMBER IN PROGRAMME START DATE

---

Change to Attribute: Changed Name, status to Retired, Description

- Changed Name from Data\_Dictionary.Attributes.S.Spe.STAFF\_MEMBER\_IN\_PROGRAMME\_START\_DATE to Retired.Data\_Dictionary.Attributes.S.STAFF\_MEMBER\_IN\_PROGRAMME\_START\_DATE
- Retired STAFF MEMBER IN PROGRAMME START DATE
- Changed Description

For enquiries about this Change Request, please email [information.standards@hscic.gov.uk](mailto:information.standards@hscic.gov.uk)