

## Health and Social Care Information Centre

### NHS Data Model and Dictionary Service

**Type:** Data Dictionary Change Notice  
**Reference:** 1409  
**Version No:** 1.0  
**Subject:** Retirement of Standards - DSCN's 46/97/P32, 01/2004, 04/2004, 11/2005, 27/2002, 31/2002, 53/2002 and 54/2002  
**Effective Date:** 1 April 2014  
**Reason for Change:** Retirement of Data Standards  
**Publication Date:** 25 February 2014

#### Background:

The Information Standards Board for Health and Social Care (ISB) has conducted a review of all Data Set Change Notices (DSCNs) and Information Standards Notices (ISNs) issued since 1987, to update its portfolio of standards prior to the handover of responsibility to NHS England, the Health and Social Care Information Centre (HSCIC) and Public Health England.

This review has identified a number of data standards in the NHS Data Model and Dictionary which have been superseded or are no longer in use.

This Data Dictionary Change Notice (DDCN) retires the items in the NHS Data Model and Dictionary in line with the retirement of the following Data Set Change Notices, as listed on the ISB [Advanced Notification - Withdrawal](#) issued 26/09/13:

- DSCN 46/97/P32 Data Standards: Referral Request
- DSCN 01/2004 Data Standards: KC60 Sexually Transmitted Infection Statistics
- DSCN 04/2004 Data Standards: Head and Neck Cancer - Additional Items
- DSCN 11/2005 Data Standards: COVER Hepatitis B immunisation for babies
- DSCN 27/2002 Data Standards: Immunisation and Information for the COVER central return
- DSCN 31/2002 Data Standards: Shifting the Balance of Power
- DSCN 53/2002 Data Standards: National Cancer Data Set Version 1.3
- DSCN 54/2002 Data Standards: National Cancer Data Set - site specific items

To view a demonstration on "How to Read an NHS Data Model and Dictionary Change Request", visit the NHS Data Model and Dictionary help pages at: [http://www.datadictionary.nhs.uk/Flash\\_Files/changerequest.htm](http://www.datadictionary.nhs.uk/Flash_Files/changerequest.htm).

Note: if the web page does not open, please copy the link and paste into the web browser.

#### Summary of changes:

##### Diagrams

<a href="#">ACTIVITY DIAGRAM</a>	Changed Diagram
<a href="#">CANCER OUTCOMES AND SERVICES DIAGRAM</a>	Changed Diagram
<a href="#">CARE PROFESSIONAL DIAGRAM</a>	Changed Diagram
<a href="#">HEALTH PROGRAMME DIAGRAM</a>	Changed Diagram
<a href="#">PERSON AND PERSON PROPERTY DIAGRAM</a>	Changed Diagram

##### Supporting Information

<a href="#">CARE PROGRAMME APPROACH EPISODE</a>	Changed Description
<a href="#">GLOSSARY OF TERMS</a>	Changed Description

<a href="#"><u>PATIENT REGISTRATION (RETIRED)</u></a> renamed from <a href="#"><u>PATIENT REGISTRATION</u></a>	Changed Description, Name, status to Retired
<a href="#"><u>SUPERVISED DISCHARGE EPISODE (RETIRED)</u></a> renamed from <a href="#"><u>SUPERVISED DISCHARGE EPISODE</u></a>	Changed Description, Name, status to Retired
<a href="#"><u>SUPERVISION REGISTER EPISODE (RETIRED)</u></a> renamed from <a href="#"><u>SUPERVISION REGISTER EPISODE</u></a>	Changed Description, Name, status to Retired
<a href="#"><u>VACCINATION SERVICE (RETIRED)</u></a> renamed from <a href="#"><u>VACCINATION SERVICE</u></a>	Changed Description, Name, status to Retired

**Class Definitions**

<a href="#"><u>ACTIVITY GROUP</u></a>	Changed Attributes
<a href="#"><u>CARE PLAN</u></a>	Changed Attributes
<a href="#"><u>CARE PROFESSIONAL ORGANISATION</u></a>	Changed Attributes
<a href="#"><u>CLINICAL INTERVENTION</u></a>	Changed Attributes
<a href="#"><u>CURRENCY</u></a>	Changed Relationships
<a href="#"><u>GMP CLAIM FOR PAYMENT OR REIMBURSEMENT</u></a>	Changed Relationships
<a href="#"><u>GMP PAYMENT OR REIMBURSEMENT (RETIRED)</u></a> renamed from <a href="#"><u>GMP PAYMENT OR REIMBURSEMENT</u></a>	Changed Description, Name, Relationships, status to Retired
<a href="#"><u>HEALTH PROGRAMME</u></a>	Changed Description, Attributes, Relationships
<a href="#"><u>HEALTH PROGRAMME STATEMENT (RETIRED)</u></a> renamed from <a href="#"><u>HEALTH PROGRAMME STATEMENT</u></a>	Changed Description, Name, status to Retired
<a href="#"><u>ORGANISATION</u></a>	Changed Attributes, Relationships
<a href="#"><u>REFERRAL REQUEST</u></a>	Changed Attributes
<a href="#"><u>REPORTING PERIOD</u></a>	Changed Relationships
<a href="#"><u>SINGLE SEX ACCOMMODATION TARGET (RETIRED)</u></a> renamed from <a href="#"><u>SINGLE SEX ACCOMMODATION TARGET</u></a>	Changed Description, Name, status to Retired
<a href="#"><u>TOBACCO USAGE</u></a>	Changed Attributes

**Attribute Definitions**

<a href="#"><u>ACTIVITY GROUP TYPE</u></a>	Changed Description
<a href="#"><u>ACTUAL EXPENDITURE (RETIRED)</u></a> renamed from <a href="#"><u>ACTUAL EXPENDITURE</u></a>	Changed Description, Name, status to Retired
<a href="#"><u>AGE LOWER LIMIT (RETIRED)</u></a> renamed from <a href="#"><u>AGE LOWER LIMIT</u></a>	Changed Description, Name, status to Retired
<a href="#"><u>AGE UPPER LIMIT (RETIRED)</u></a> renamed from <a href="#"><u>AGE UPPER LIMIT</u></a>	Changed Description, Name, status to Retired
<a href="#"><u>COVERAGE ACHIEVED (RETIRED)</u></a> renamed from <a href="#"><u>COVERAGE ACHIEVED</u></a>	Changed Description, Name, status to Retired
<a href="#"><u>DATE STOPPED SMOKING (RETIRED)</u></a> renamed from <a href="#"><u>DATE STOPPED SMOKING</u></a>	Changed Description, Name, status to Retired
<a href="#"><u>GMP PAYMENT NUMBER (RETIRED)</u></a> renamed from <a href="#"><u>GMP PAYMENT NUMBER</u></a>	Changed Description, Name, status to Retired
<a href="#"><u>GMP PAYMENT OR REIMBURSEMENT AMOUNT (RETIRED)</u></a> renamed from <a href="#"><u>GMP PAYMENT OR REIMBURSEMENT AMOUNT</u></a>	Changed Description, Name, status to Retired
<a href="#"><u>GMP PAYMENT OR REIMBURSEMENT DATE (RETIRED)</u></a> renamed from <a href="#"><u>GMP PAYMENT OR REIMBURSEMENT DATE</u></a>	Changed Description, Name, status to Retired
<a href="#"><u>LEVEL OF SERVICE PROVIDED (RETIRED)</u></a> renamed from <a href="#"><u>LEVEL OF SERVICE PROVIDED</u></a>	Changed Description, Name, status to Retired
<a href="#"><u>LOCAL AUTHORITY SERVICES (RETIRED)</u></a> renamed from <a href="#"><u>LOCAL AUTHORITY SERVICES</u></a>	Changed Description, Name, status to Retired
<a href="#"><u>LOCAL POLICY AND OBJECTIVES (RETIRED)</u></a> renamed from <a href="#"><u>LOCAL POLICY AND OBJECTIVES</u></a>	Changed Description, Name, status to Retired
<a href="#"><u>OUT-PATIENT REFERRAL INDICATOR (RETIRED)</u></a> renamed from <a href="#"><u>OUT-PATIENT REFERRAL INDICATOR</u></a>	Changed Description, Name, status to Retired
<a href="#"><u>PRIMARY CARE COMMUNICATION SENT DATE (RETIRED)</u></a> renamed from <a href="#"><u>PRIMARY CARE COMMUNICATION SENT DATE</u></a>	Changed Description, Name, status to Retired
<a href="#"><u>PRIMARY CARE TRUST LEVEL (RETIRED)</u></a> renamed from <a href="#"><u>PRIMARY CARE TRUST LEVEL</u></a>	Changed Description, Name, status to Retired

<a href="#"><u>PRIMARY COURSE DOSE NUMBER (RETIRED)</u></a> renamed from <a href="#"><u>PRIMARY COURSE DOSE NUMBER</u></a>	Changed Description, Name, status to Retired
<a href="#"><u>PROGRAMME CODE (RETIRED)</u></a> renamed from <a href="#"><u>PROGRAMME CODE</u></a>	Changed Description, Name, status to Retired
<a href="#"><u>PROGRAMME DESCRIPTION (RETIRED)</u></a> renamed from <a href="#"><u>PROGRAMME DESCRIPTION</u></a>	Changed Description, Name, status to Retired
<a href="#"><u>PROGRAMME HEADING CODE (RETIRED)</u></a> renamed from <a href="#"><u>PROGRAMME HEADING CODE</u></a>	Changed Description, Name, status to Retired
<a href="#"><u>PROJECTED EXPENDITURE (RETIRED)</u></a> renamed from <a href="#"><u>PROJECTED EXPENDITURE</u></a>	Changed Description, Name, status to Retired
<a href="#"><u>RADIOTHERAPY ANATOMICAL TREATMENT SITE (RETIRED)</u></a> renamed from <a href="#"><u>RADIOTHERAPY ANATOMICAL TREATMENT SITE</u></a>	Changed Description, Name, status to Retired
<a href="#"><u>RATE OF GMP PAYMENT</u></a>	Changed Description
<a href="#"><u>REGISTRATION DATE</u></a>	Changed Description
<a href="#"><u>REINFORCING COURSE DOSE NUMBER (RETIRED)</u></a> renamed from <a href="#"><u>REINFORCING COURSE DOSE NUMBER</u></a>	Changed Description, Name, status to Retired
<a href="#"><u>SINGLE SEX TARGET DATE (RETIRED)</u></a> renamed from <a href="#"><u>SINGLE SEX TARGET DATE</u></a>	Changed Description, Name, status to Retired
<a href="#"><u>SINGLE SEX TARGET MET DATE (RETIRED)</u></a>	New Attribute
<a href="#"><u>SINGLE SEX TARGET OBJECTIVE (RETIRED)</u></a> renamed from <a href="#"><u>SINGLE SEX TARGET OBJECTIVE</u></a>	Changed Description, Name, status to Retired
<a href="#"><u>SINGLE SEX TARGET REVISED DATE (RETIRED)</u></a> renamed from <a href="#"><u>SINGLE SEX TARGET REVISED DATE</u></a>	Changed Description, Name, status to Retired
<a href="#"><u>SPECIALIST HIV SKILLS AVAILABLE (RETIRED)</u></a> renamed from <a href="#"><u>SPECIALIST HIV SKILLS AVAILABLE</u></a>	Changed Description, Name, status to Retired
<a href="#"><u>SPECIALIST REGISTRAR FLAG (RETIRED)</u></a> renamed from <a href="#"><u>SPECIALIST REGISTRAR FLAG</u></a>	Changed Description, Name, status to Retired
<a href="#"><u>SUPERVISION REGISTER RISK (RETIRED)</u></a> renamed from <a href="#"><u>SUPERVISION REGISTER RISK</u></a>	Changed Description, Name, status to Retired
<a href="#"><u>TARGET COVERAGE (RETIRED)</u></a> renamed from <a href="#"><u>TARGET COVERAGE</u></a>	Changed Description, Name, status to Retired
<a href="#"><u>WARD STAY TERMINATION REASON (RETIRED)</u></a> renamed from <a href="#"><u>WARD STAY TERMINATION REASON</u></a>	Changed Description, Name, status to Retired

**Data Elements**

<a href="#"><u>PRIMARY CARE COMMUNICATION SENT DATE (RETIRED)</u></a> renamed from <a href="#"><u>PRIMARY CARE COMMUNICATION SENT DATE</u></a>	Changed Description, Name, linked Attribute, status to Retired
--	--

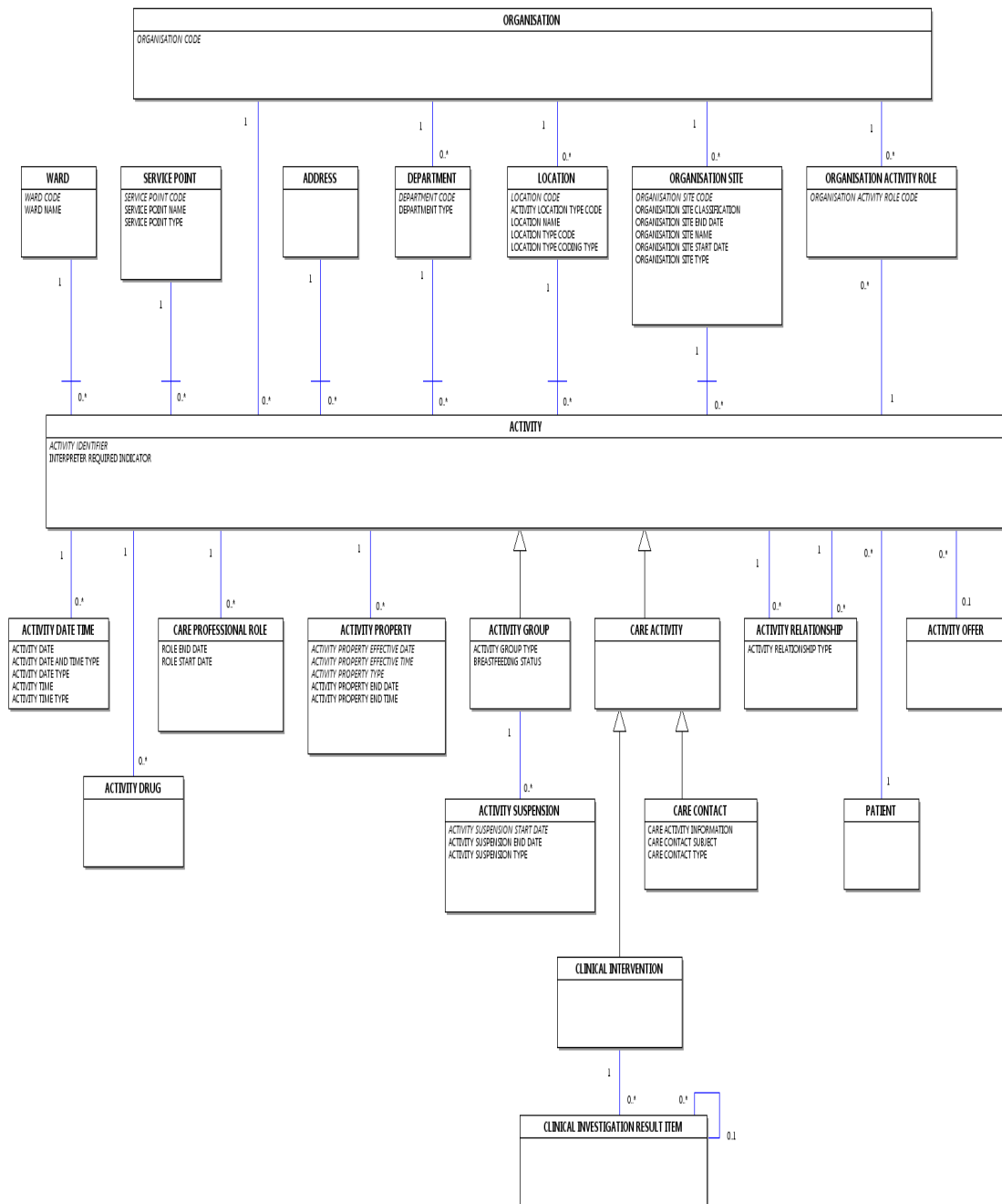
**Date:** 25 February 2014

**Sponsor:** Dr K. Lunn, Director of Information Standards Delivery. Health and Social Care Information Centre

**Note:** New text is shown with a blue background. Deleted text is crossed out. Retired text is shown in grey. Within the Diagrams deleted classes and relationships are red, changed items are blue and new items are green.

# ACTIVITY DIAGRAM

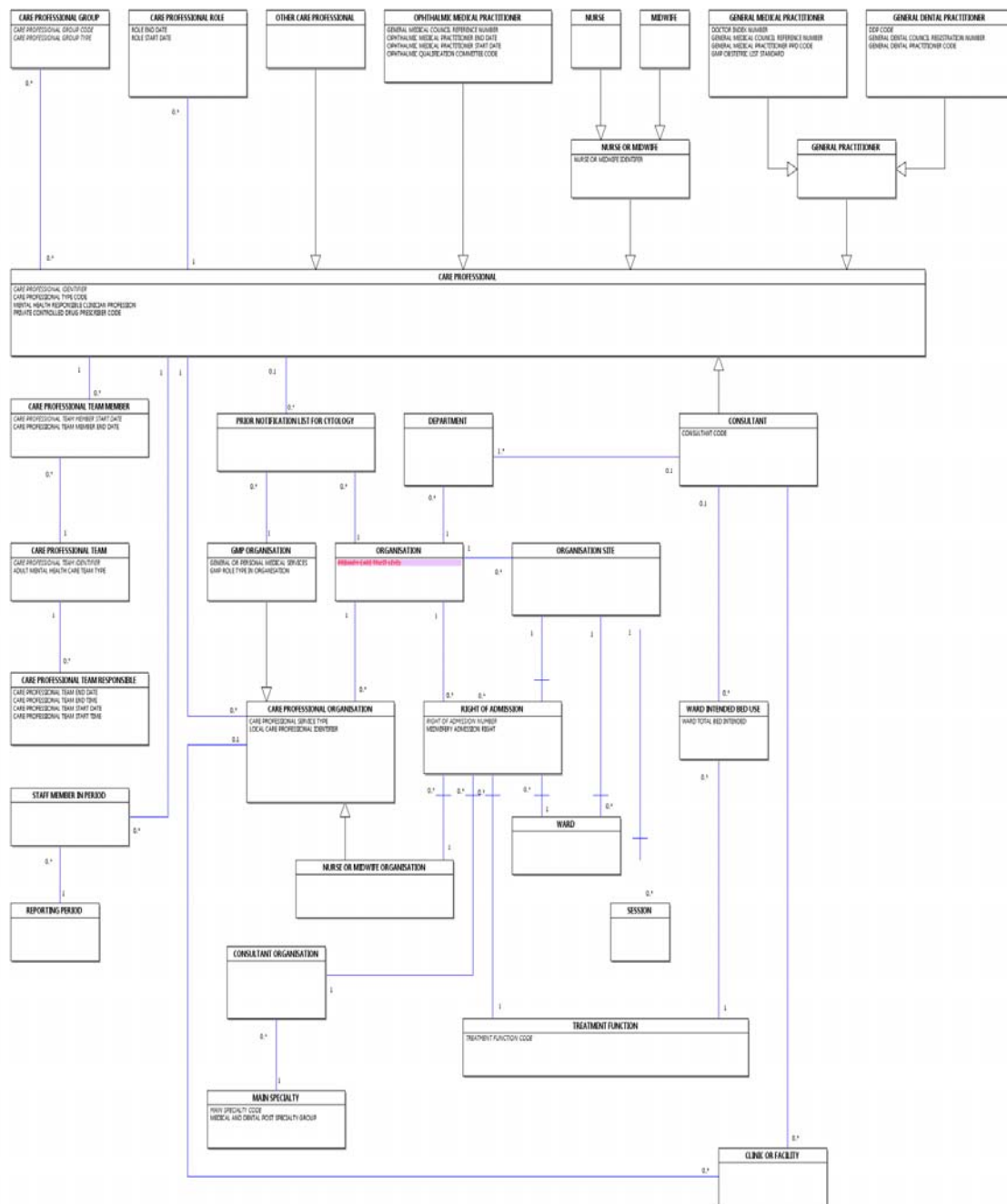
Change to Diagram: Changed Diagram





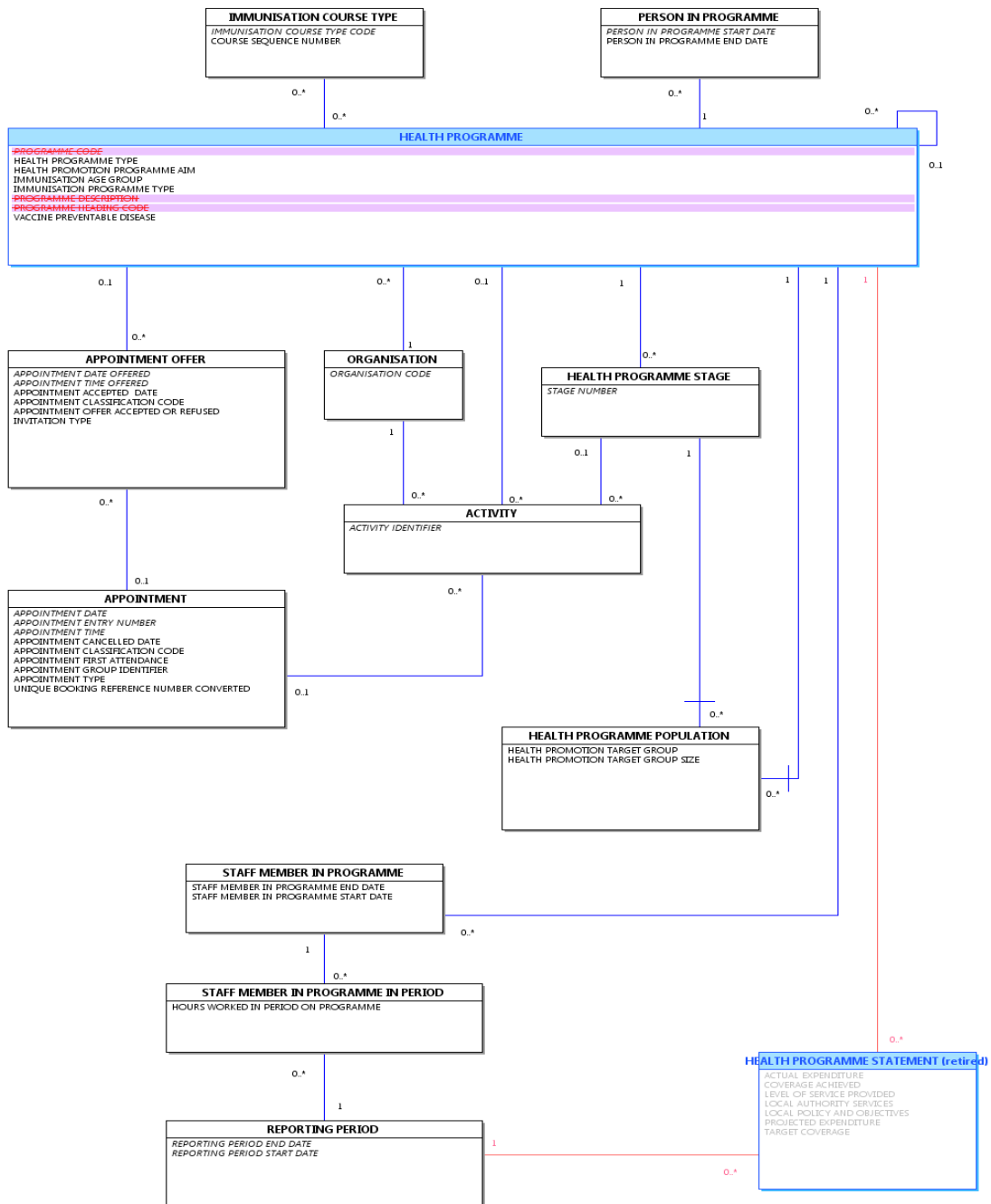
# CARE PROFESSIONAL DIAGRAM

Change to Diagram: Changed Diagram



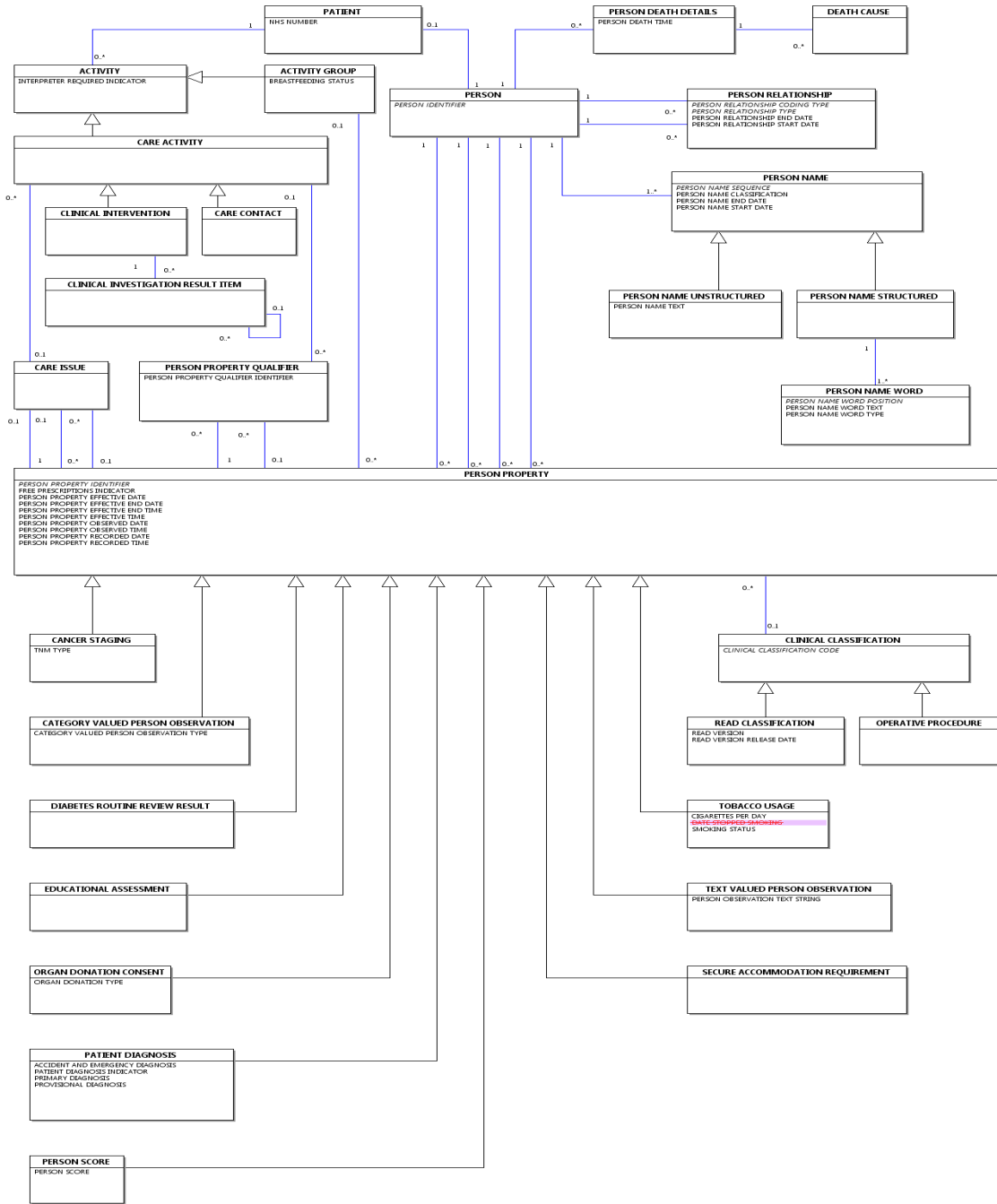
# HEALTH PROGRAMME DIAGRAM

Change to Diagram: Changed Diagram



# PERSON AND PERSON PROPERTY DIAGRAM

Change to Diagram: Changed Diagram



# CARE PROGRAMME APPROACH EPISODE

Change to Supporting Information: Changed Description

[Care Programme Approach Episode](#) is an [ACTIVITY GROUP](#).

A period of care provided as part of the care programme approach for an adult (including elderly) [PATIENT](#). The [Care Programme Approach Episode](#) forms part of a [Adult Mental Health Care Spell](#).



The first [Care Programme Approach Episode](#) starts when the [Adult Mental Health Care Spell](#) initial assessment of the [PATIENT](#) determines that a plan of care or treatment is required which will be delivered under the care programme approach.

The [Care Programme Approach Episode](#) ends when one of the following occurs:

- a review determines that no further care need be provided
- a different level of care programme approach is required
- a [PATIENT](#) transfers to another [Health Care Provider](#) with main responsibility for provision of mental health care also being transferred
- death of the [PATIENT](#)

A [Care Programme Approach Episode](#) must involve all of the following key elements:

- a. An assessment of the [PATIENT](#)'s health and social care needs
- b. A written care plan to meet the assessed needs, the [PATIENT](#) being involved in drawing up the care plan
- c. Regular reviews of the [PATIENT](#)'s care plan
- d. A named mental health worker, called a care coordinator, who is responsible for the [PATIENT](#) care under the care programme approach

Each [Care Programme Approach Episode](#) must be subject to at least one [Care Programme Approach Review](#) and at least one [Care Programme Approach Care Co-ordinator Allocation](#). ~~It may also be associated with one or more [Supervised Discharge Episodes](#) or one or more [Supervision Register Episodes](#).~~

~~Information recorded for a [Care Programme Approach Episode](#) includes:~~

- ~~[Start Date](#)~~
- ~~[CARE PROGRAMME APPROACH LEVEL](#)~~
- ~~[End Date](#) ~~

## GLOSSARY OF TERMS

Change to Supporting Information: Changed Description

The Glossary lists commonly used terms in alphabetical order. These terms are not defined and therefore do not have a class or attribute. Each entry in the Glossary is shown with its related class and attribute where appropriate.

For example 'Booked Admission' is shown as relating to the class [ELECTIVE ADMISSION LIST ENTRY](#). [ELECTIVE ADMISSION LIST ENTRY](#) has an attribute [ELECTIVE ADMISSION TYPE](#) and reference to the attribute definition will identify that 'Booked Admission' is one of the national code classifications of [ELECTIVE ADMISSION TYPES](#).

Class	Attribute
<b>Admission</b>	
<a href="#">Hospital Provider Spell</a>	<a href="#">ACTIVITY DATE</a> of the <a href="#">ACTIVITY DATE TYPE</a> <a href="#">Start Date</a>
<b>Annual Census</b>	
<a href="#">Hospital Provider Spell</a>	<a href="#">ACTIVITY DATE</a> of the <a href="#">ACTIVITY DATE TYPE</a> <a href="#">Start Date</a>
<a href="#">OPERATIVE PROCEDURE</a>	
<a href="#">Mental Health Act Legal Status</a>	<a href="#">MENTAL CATEGORY</a>
<a href="#">Hospital Provider Spell</a>	<a href="#">ACTIVITY DATE</a> of the <a href="#">ACTIVITY DATE TYPE</a> <a href="#">Discharge Date</a>
<a href="#">PATIENT DIAGNOSIS</a>	

<b>Booked Admission</b>	
<a href="#">ELECTIVE ADMISSION LIST ENTRY</a>	<a href="#">ELECTIVE ADMISSION TYPE</a>
<b>Code of General Practitioner</b>	
<a href="#">GENERAL MEDICAL PRACTITIONER</a>	<a href="#">GENERAL MEDICAL PRACTITIONER PPD CODE</a>
<a href="#">GENERAL DENTAL PRACTITIONER</a>	<a href="#">GENERAL DENTAL PRACTITIONER CODE</a>
<b>Consultant Code</b>	
<a href="#">CONSULTANT</a>	<a href="#">CONSULTANT CODE</a>
<b>Consultant Name</b>	
<a href="#">PERSON NAME</a>	
<b>Day Case Admission</b>	
<a href="#">Hospital Provider Spell</a>	<a href="#">PATIENT CLASSIFICATION</a>
<b>Diagnostic Services</b>	
<a href="#">Pathology Department</a>	
<a href="#">Radiology Department</a>	
<a href="#">Isotope Procedure Department</a>	
<a href="#">Physiological Measurement Department</a>	
<b>Discharge</b>	
<a href="#">Hospital Provider Spell</a>	<a href="#">ACTIVITY DATE</a> of the <a href="#">ACTIVITY DATE TYPE</a> <a href="#">Discharge Date</a>
<b>Drop-In Clinic</b>	
<a href="#">REFERRAL REQUEST</a>	<a href="#">OUT-PATIENT CLINIC REFERRING INDICATOR</a>
<b>Emergency Admission</b>	
<a href="#">Hospital Provider Spell</a>	<a href="#">ADMISSION METHOD</a>
<b>Emergency Journey</b>	
<a href="#">Emergency Transport Request</a>	
<b>General Practitioner Name</b>	
<a href="#">PERSON NAME</a>	
<b>GMC or GDC Reference Number</b>	
<a href="#">CARE PROFESSIONAL</a>	<a href="#">CARE PROFESSIONAL IDENTIFIER</a>
<b>Local Patient Identifier</b>	
<a href="#">PATIENT ORGANISATION</a>	<a href="#">LOCAL PATIENT IDENTIFIER</a>
<b>Maternity Admission</b>	
<a href="#">Hospital Provider Spell</a>	<a href="#">ADMISSION METHOD</a>
<b>Neonate</b>	
<a href="#">PATIENT</a>	
<b>Nurse Identifier</b>	
<a href="#">CARE PROFESSIONAL</a>	<a href="#">CARE PROFESSIONAL IDENTIFIER</a>
<b>Nurse Name</b>	
<a href="#">PERSON NAME</a>	
<b>Ordinary Admission</b>	
<a href="#">Hospital Provider Spell</a>	<a href="#">PATIENT CLASSIFICATION</a>
<b>Organisation Postcode</b>	
<a href="#">ADDRESS</a>	<a href="#">POSTCODE</a>
<a href="#">ADDRESS ASSOCIATION</a>	
<b>Organisation Address</b>	
<a href="#">ADDRESS ASSOCIATION</a>	<a href="#">ADDRESS ASSOCIATION TYPE</a>

<b>Patient Name</b>	
<a href="#">PERSON NAME</a>	
<b>Patients Usual Address</b>	
<a href="#">ADDRESS ASSOCIATION</a>	<a href="#">ADDRESS ASSOCIATION TYPE</a>
<b>Planned Admission</b>	
<a href="#">ELECTIVE ADMISSION LIST ENTRY</a>	<a href="#">ELECTIVE ADMISSION TYPE</a>
<b>Postcode of Usual Address</b>	
<a href="#">ADDRESS</a>	<a href="#">POSTCODE</a>
<b>Regular Day Admission</b>	
<a href="#">Hospital Provider Spell</a>	<a href="#">PATIENT CLASSIFICATION</a>
<b>Sex</b>	
<a href="#">PERSON GENDER</a>	<a href="#">PERSON GENDER CODE</a>
<a href="#">PERSON GENDER CODE CURRENT</a>	
<a href="#">PERSON GENDER CODE AT REGISTRATION</a>	
<b>Special/Planned Journey</b>	
<a href="#">Special Transport Request</a>	
<a href="#">Planned Transport Request</a>	
<b>Telephone Number</b>	
<a href="#">COMMUNICATION CONTACT INFORMATION</a>	<a href="#">COMMUNICATION CONTACT METHOD</a>
	<a href="#">COMMUNICATION CONTACT STRING</a>
<b>Two Man/One Man Crew</b>	
<a href="#">TRANSPORT REQUIREMENT</a>	<a href="#">TRANSPORT NEED</a>
<b>TCI (To Come In Date)</b>	
<a href="#">OFFER OF ADMISSION</a>	<a href="#">OFFERED FOR ADMISSION DATE</a>
<b>Waiting List Admission</b>	
<a href="#">ELECTIVE ADMISSION LIST ENTRY</a>	<a href="#">ELECTIVE ADMISSION TYPE</a>
<b>Ward Transfer</b>	
<a href="#">Ward Stay</a>	<a href="#">ACTIVITY DATE</a> of the <a href="#">ACTIVITY DATE TYPE</a> <a href="#">End Date</a>
	<a href="#">WARD STAY TERMINATION REASON</a>

---

## PATIENT REGISTRATION (RETIRED)\_ renamed from PATIENT REGISTRATION

---

Change to Supporting Information: Changed Description, Name, status to Retired

The registration of a [PATIENT](#) at an [Out-Patient Clinic](#), if required. **This item has been retired from the NHS Data Model and Dictionary.**

Use the [REGISTRATION DATE](#) to record the date of the [Patient Registration](#). **The last live version of this item is available in the February 2014 release of the NHS Data Model and Dictionary.**

Use the [PATIENT](#)'s [REGISTRATION DATE](#) to determine whether a [PATIENT](#) has been newly registered at an [Out-Patient Clinic](#). **Access to this version can be obtained by emailing [information.standards@hscic.gov.uk](mailto:information.standards@hscic.gov.uk) with "NHS Data Model and Dictionary - Archive Request" in the email subject line.**

---

## PATIENT REGISTRATION (RETIRED)\_ renamed from PATIENT REGISTRATION

---

Change to Supporting Information: Changed Description, Name, status to Retired

- Changed Description
- Changed Name from Data\_Dictionary.NHS\_Business\_Definitions.P.Patient\_Registration to Retired.Data\_Dictionary.NHS\_Business\_Definitions.P.Patient\_Registration
- Retired Patient Registration

---

## **SUPERVISED DISCHARGE EPISODE (RETIRED) renamed from SUPERVISED DISCHARGE EPISODE**

---

Change to Supporting Information: Changed Description, Name, status to Retired

~~[Supervised Discharge Episode](#) is an [ACTIVITY GROUP](#). This item has been retired from the NHS Data Model and Dictionary.~~

~~A period of time a [PATIENT](#) who is subject to a [Care Programme Approach Episode](#), receives supervised aftercare under the provision of Section 25 of the Mental Health Act 1983 as amended by the Mental Health (Patients in the Community) Act 1995. The [Supervised Discharge Episode](#) starts on the date supervised aftercare commences. The last live version of this item is available in the February 2014 release of the NHS Data Model and Dictionary.~~

~~Each [Supervised Discharge Episode](#) must be part of only one [Care Programme Approach Episode](#). Access to this version can be obtained by emailing [information.standards@hscic.gov.uk](mailto:information.standards@hscic.gov.uk) with "NHS Data Model and Dictionary - Archive Request" in the email subject line.~~

~~Information recorded for a [Supervised Discharge Episode](#) includes:~~

- ~~[Start Date](#)~~
- ~~[End Date](#)~~ 

~~References:~~

~~Section 25 Mental Health Act 1983  
Mental Health (Patients in the Community) Act 1995~~

---

## **SUPERVISED DISCHARGE EPISODE (RETIRED) renamed from SUPERVISED DISCHARGE EPISODE**

---

Change to Supporting Information: Changed Description, Name, status to Retired

- Changed Description
- Changed Name from Data\_Dictionary.NHS\_Business\_Definitions.S.Supervised\_Discharge\_Episode to Retired.Data\_Dictionary.NHS\_Business\_Definitions.S.Supervised\_Discharge\_Episode
- Retired Supervised Discharge Episode

---

## **SUPERVISION REGISTER EPISODE (RETIRED) renamed from SUPERVISION REGISTER EPISODE**

---

Change to Supporting Information: Changed Description, Name, status to Retired

~~[Supervision Register Episode](#) is an [ACTIVITY GROUP](#). This item has been retired from the NHS Data Model and Dictionary.~~

~~A period of time a [PATIENT](#) who is subject to a [Care Programme Approach Episode](#), is registered on a supervision register. The [Supervision Register Episode](#) starts on the date the [PATIENT](#) is entered in the supervision register~~

and ends when the [PATIENT](#) is removed from the supervision register. The last live version of this item is available in the February 2014 release of the NHS Data Model and Dictionary.

Each [Supervision Register Episode](#) must be part of only one [Care Programme Approach Episode](#). Access to this version can be obtained by emailing [information.standards@hscic.gov.uk](mailto:information.standards@hscic.gov.uk) with "NHS Data Model and Dictionary - Archive Request" in the email subject line.

Information recorded for a [Supervision Register Episode](#) includes:

[Start Date](#)  
[End Date](#)  $\ominus$   
[SUPERVISION REGISTER RISK](#)

References:

HSG(94)5

---

## SUPERVISION REGISTER EPISODE (RETIRED)\_ renamed from SUPERVISION REGISTER EPISODE

---

Change to Supporting Information: Changed Description, Name, status to Retired

- Changed Description
- Changed Name from Data\_Dictionary.NHS\_Business\_Definitions.S.Supervision\_Register\_Episode to Retired.Data\_Dictionary.NHS\_Business\_Definitions.S.Supervision\_Register\_Episode
- Retired Supervision Register Episode

---

## VACCINATION SERVICE (RETIRED)\_ renamed from VACCINATION SERVICE

---

Change to Supporting Information: Changed Description, Name, status to Retired

A [Vaccination Service](#) is an [Item Of Service Delivery](#). This item has been retired from the NHS Data Model and Dictionary.

A [Vaccination Service](#) is a vaccination or immunisation given to a [PERSON](#) in accordance with public policy, by or on behalf of a [GENERAL MEDICAL PRACTITIONER](#), for which a fee may be claimed. The last live version of this item is available in the February 2014 release of the NHS Data Model and Dictionary.

The applicable payment rate for the [Vaccination Service](#) delivered is determined by the combination of [VACCINE PREVENTABLE DISEASE](#) and [IMMUNISATION COURSE TYPE](#). Access to this version can be obtained by emailing [information.standards@hscic.gov.uk](mailto:information.standards@hscic.gov.uk) with "NHS Data Model and Dictionary - Archive Request" in the email subject line.

Note that [Items Of Service Delivery](#) reimbursement cannot be claimed by those [GENERAL MEDICAL PRACTITIONERS](#) who hold a Personal Medical Services, as opposed to a General Medical Services, contract.

References:

Statement of Fees and Allowances Payable to General Medical Practitioners in England and Wales:

---

## VACCINATION SERVICE (RETIRED)\_ renamed from VACCINATION SERVICE

---

Change to Supporting Information: Changed Description, Name, status to Retired

- Changed Description
- Changed Name from Data\_Dictionary.NHS\_Business\_Definitions.V.Vaccination\_Service to Retired.Data\_Dictionary.NHS\_Business\_Definitions.V.Vaccination\_Service
- Retired Vaccination Service

---

## ACTIVITY GROUP

---

Change to Class: Changed Attributes

*Attributes of this Class are:*

A and E INCIDENT LOCATION TYPE  
 A and E PATIENT GROUP  
 ACTIVITY GROUP TYPE  
 ADMISSION METHOD  
 BABY FIRST FEED BREAST MILK STATUS  
 BREASTFEEDING STATUS  
 CANCER OR SYMPTOMATIC BREAST REFERRAL PATIENT STATUS  
 CANCER REFERRAL TO TREATMENT PERIOD START DATE  
 CANCER SCREENING STATUS  
 CANCER TREATMENT INTENT  
 CANCER TREATMENT PERIOD START DATE  
 CARE PROGRAMME APPROACH LEVEL  
 CARER RESIDENT INDICATION CODE FOR NATIONAL NEONATAL DATA SET  
 CHILDREN TEENAGERS AND YOUNG ADULTS AGE CATEGORY  
 DELIVERY FACILITIES ONLY USED  
 DELIVERY PLACE CHANGE REASON  
 DISCHARGE DESTINATION  
 DISCHARGED TO HOSPITAL AT HOME SERVICE INDICATOR  
 DISCHARGE FROM MENTAL HEALTH SERVICE REASON  
 DISCHARGE METHOD  
 FIRST REGULAR DAY OR NIGHT ADMISSION  
 FULL POSTNATAL EXAMINATION DATE  
 GENERAL DENTAL SERVICE INDICATOR  
 IMPROVING ACCESS TO PSYCHOLOGICAL THERAPIES CARE SPELL END CODE  
 INCIDENT TYPE  
 INTRAVESICAL CHEMOTHERAPY RECEIVED INDICATOR  
 INTRAVESICAL IMMUNOTHERAPY RECEIVED INDICATOR  
 KEY WORKER SEEN INDICATOR  
 LENGTH OF STAY ADJUSTMENT  
 LENGTH OF STAY ADJUSTMENT REASON  
 MONITORING INTENT  
 NON SMOKING CONFIRMATION STATUS AT 4 WEEKS  
 OUTCOME AT 4 WEEK FOLLOW-UP  
 PAEDIATRIC NEPHROLOGY REGISTRY STATUS CODE  
 PALLIATIVE CARE SPECIALIST SEEN INDICATOR  
 PALLIATIVE TREATMENT REASON CODE FOR UPPER GASTROINTESTINAL  
 PATIENT RECEIVING ONE TO ONE NURSING CARE INDICATOR  
 PHARMACOTHERAPY STOP SMOKING AID RECEIVED  
 PREGNANCY OUTCOME CODE  
 PREGNANCY TOTAL PREVIOUS LOSSES LESS THAN 24 WEEKS  
 PREVIOUS NEGATIVE HIV TEST IN UNITED KINGDOM INDICATOR  
 RADIOTHERAPY INTENT  
 RENAL DIALYSIS SCHEDULE TYPE  
 SMOKING QUIT DATE  
 SOURCE OF ADMISSION

SUPERVISED COMMUNITY TREATMENT END REASON  
~~SUPERVISION REGISTER RISK~~  
TELEPHONE CONTACT INDICATOR  
TREATMENT START DATE FOR CANCER  
~~WARD STAY TERMINATION REASON~~

---

## CARE PLAN

---

Change to Class: Changed Attributes

*Attributes of this Class are:*

K CARE PLAN NUMBER  
CANCER CARE PLAN INTENT  
CANCER RECURRENCE CARE PLAN INDICATOR  
CARE PLAN AGREED DATE  
CARE PLAN END DATE FOR CHILD PROTECTION PLAN  
CARE PLAN START DATE FOR CHILD PROTECTION PLAN  
CARE PLAN TYPE  
CHILD PROTECTION PLAN INDICATOR  
CHILD PROTECTION PLAN REASON CODE  
MULTIDISCIPLINARY TEAM CANCER CARE PLAN DISCUSSED INDICATOR  
MULTIDISCIPLINARY TEAM DISCUSSION DATE FOR CANCER  
NO CANCER TREATMENT REASON  
~~PRIMARY CARE COMMUNICATION SENT DATE~~

---

## CARE PROFESSIONAL ORGANISATION

---

Change to Class: Changed Attributes

*Attributes of this Class are:*

CARE PROFESSIONAL SERVICE TYPE  
LOCAL CARE PROFESSIONAL IDENTIFIER  
~~SPECIALIST HIV SKILLS AVAILABLE~~  
~~SPECIALIST REGISTRAR FLAG~~

---

## CLINICAL INTERVENTION

---

Change to Class: Changed Attributes

*Attributes of this Class are:*

ABDOMINAL XRAY PERFORMED REASON  
ABDOMINAL XRAY PERFORMED TO INVESTIGATE ABDOMINAL SIGNS INDICATOR  
ABLATIVE THERAPY TYPE  
ACCIDENT AND EMERGENCY INVESTIGATION  
ACCIDENT AND EMERGENCY TREATMENT  
ANAESTHESIA TYPE IN LABOUR AND DELIVERY  
ANAESTHETIC METHOD TYPE FOR DIALYSIS ACCESS CONSTRUCTION  
ANAESTHETIC TYPE FOR JOINT REPLACEMENT  
ANTI CANCER REGIMEN NUMBER  
ARTERIOVENOUS GRAFT MATERIAL TYPE  
ARTIFICIAL RUPTURE OF MEMBRANES REASON CODE  
ASA PHYSICAL STATUS CLASSIFICATION SYSTEM CODE  
ASSOCIATED PROCEDURE TYPE FOR ANKLE REPLACEMENT  
BILIARY STENT INSERTION REASON

BIOLOGICAL RESURFACING TYPE  
BLOOD FLOW RATE  
BLOOD TRANSFUSION PRODUCT TYPE  
BLOOD TRANSFUSION TYPE  
BLOOD TRANSFUSION UNITS TRANSFUSED  
BODY IRRADIATION  
BONEGRAFT INDICATOR FOR JOINT REPLACEMENT  
BONEGRAFT INDICATOR FOR REVISION ANKLE REPLACEMENT  
BONEGRAFT TYPE FOR JOINT REPLACEMENT  
BRACHYTHERAPY TYPE  
BREAST ASSESSMENT OUTCOME  
BREAST SCREENING TEST OUTCOME  
CANCER IMAGING MODALITY  
CANCER TREATMENT MODALITY  
CHEMICAL THROMBO PROPHYLAXIS REGIME TYPE  
CHEMO RADIATION INDICATOR  
CHEMOTHERAPY ACTUAL DOSE  
CHEST DRAIN IN SITU INDICATOR  
CLINICAL INTERVENTION TYPE  
CLINICAL INVESTIGATION NOT PERFORMED REASON CODE FOR MATERNITY  
CO MORBIDITY ADJUSTMENT INDICATOR  
COMPLICATION TYPE FOR RENAL DIALYSIS ACCESS  
COMPONENT REMOVAL INDICATOR  
CONTINUOUS INFUSION OF PULMONARY VASODILATOR RECEIVED INDICATOR  
CONTINUOUS POSITIVE AIRWAY PRESSURE DELIVERY MODE  
CONTRACEPTION METHOD STATUS  
CYTOLOGY SCREENING ACTION TYPE  
DELIVERED IN WATER INDICATOR  
DELIVERY INSTRUMENT TYPE  
DELIVERY OF PLACENTA METHOD  
DENTAL TREATMENT CLASSIFICATION  
DRUG ADMINISTRATION DURATION  
DRUG ADMINISTRATION STATUS  
DRUG DAYS SUPPLY  
DRUG DOSAGE AND ADMIN SPECIFICATION  
DRUG IDENTIFICATION  
DRUG INFORMATION COMMENT  
DRUG INFORMATION TYPE  
DRUG QUANTITY SUPPLIED  
DRUG REGIMEN ACRONYM  
DRUG TREATMENT COST  
DRUG TREATMENT INTENT  
ENDOSCOPIC OR RADIOLOGICAL COMPLICATION TYPE  
ENDOSCOPIC PROCEDURE TYPE  
ENTERAL FEEDING METHOD  
ENTERAL FEED TYPE GIVEN  
EPISIOTOMY PERFORMED REASON CODE  
EXCISION TYPE  
FETAL ORDER  
FIRST DEFINITIVE TREATMENT PROVIDED  
FIRST DIAGNOSTIC TEST  
FIXATION TYPE FOR ELBOW OR SHOULDER REPLACEMENT  
FORMULA MILK OR MILK FORTIFIER TYPE  
FRACTION NUMBER



HIP SURGERY PATIENT POSITION  
IMAGE GUIDED SURGERY INDICATOR  
IMAGING ANATOMICAL SITE  
IMAGING EVENT NUMBER  
IMAGING INTERVENTION INDICATOR  
IMAGING MODALITY  
IMAGING OR RADIODIAGNOSTIC EVENT INDICATION CODE FOR RENAL CARE  
IMMUNITY TEST RESULT  
INFECTION CULTURE TEST INDICATOR  
INTERVENTION SESSION TYPE  
INTRAPARTUM ANTIBIOTICS GIVEN INDICATOR  
JOINT REPLACEMENT REVISION REASON CODE FOR ANKLE  
JOINT REPLACEMENT REVISION REASON CODE FOR ELBOW  
JOINT REPLACEMENT REVISION REASON CODE FOR HIP  
JOINT REPLACEMENT REVISION REASON CODE FOR KNEE  
JOINT REPLACEMENT REVISION REASON CODE FOR SHOULDER  
KIDNEY TRANSPLANTED CODE  
LABOUR FIRST STAGE LENGTH  
LABOUR OR DELIVERY ONSET METHOD  
LABOUR PROFESSIONAL PRIOR INVOLVEMENT  
LABOUR SECOND STAGE LENGTH  
LAPAROTOMY FOR NECROTISING ENTEROCOLITIS INDICATION CODE  
LONG HEAD BICEPS TENOTOMY INDICATOR  
MARGIN INVOLVED INDICATION CODE  
MATERNAL CRITICAL INCIDENT TYPE CODE  
MECHANICAL THROMBO PROPHYLAXIS REGIME TYPE  
MINIMALLY INVASIVE SURGERY INDICATOR  
MINOR SURGERY TYPE  
MORE THAN THREE RECTAL WASHOUTS RECEIVED INDICATOR  
NATURE OF RISK AREA CODE  
NEOADJUVANT THERAPY INDICATOR  
NEONATAL CRITICAL INCIDENT TYPE CODE  
NEONATAL RESUSCITATION METHOD  
NEONATAL RESUSCITATION METHOD FOR NATIONAL NEONATAL DATA SET  
NEPHRECTOMY TYPE  
NEURODEVELOPMENTAL ASSESSMENT ALREADY TAKEN INDICATOR  
NEWBORN HEARING INCOMPLETE REASON CODE  
NEWBORN HEARING SCREENING TEST TYPE  
NITRIC OXIDE GIVEN INDICATOR  
NUMBER OF TELETHERAPY FIELDS  
OPERATIVE PROCEDURE INDICATOR  
OPPORTUNISTIC SCREENING TYPE  
PAIN RELIEF TYPE IN LABOUR AND DELIVERY  
PARENTAL CONSENT TO ADMINISTER VITAMIN K INDICATOR  
PARENTAL CONSENT TO POST MORTEM INDICATOR  
PARENTERAL NUTRITION RECEIVED INDICATOR  
PATHOLOGY INVESTIGATION PRIORITY  
PATHOLOGY RESULT REPORTED DATE  
PATIENT PROCEDURE PERFORMED INDICATOR  
PATIENT PROCEDURE TYPE FOR PRIMARY ANKLE REPLACEMENT  
PATIENT PROCEDURE TYPE FOR PRIMARY ELBOW REPLACEMENT  
PATIENT PROCEDURE TYPE FOR PRIMARY HIP REPLACEMENT  
PATIENT PROCEDURE TYPE FOR PRIMARY KNEE REPLACEMENT  
PATIENT PROCEDURE TYPE FOR PRIMARY SHOULDER REPLACEMENT

PATIENT PROCEDURE TYPE FOR REVISION ANKLE REPLACEMENT  
PATIENT PROCEDURE TYPE FOR REVISION ELBOW REPLACEMENT  
PATIENT PROCEDURE TYPE FOR REVISION HIP REPLACEMENT  
PATIENT PROCEDURE TYPE FOR REVISION KNEE REPLACEMENT  
PATIENT PROCEDURE TYPE FOR REVISION SHOULDER REPLACEMENT  
PERFORATIONS OR SEROSAL INVOLVEMENT INDICATION CODE  
PERITONEAL DIALYSIS CATHETER INSERTION TECHNIQUE  
PERITONEAL DIALYSIS CATHETER TYPE  
PLANE OF SURGICAL EXCISION TYPE  
PLANNED TREATMENT CHANGE REASON  
POST MORTEM CARRIED OUT INDICATOR  
POST MORTEM CONFIRMED NECROTISING ENTEROCOLITIS DIAGNOSIS INDICATOR  
POST MORTEM TYPE  
PREVIOUS BONY INFECTION INDICATOR OF TIBIA OR HINDFOOT  
PREVIOUS FRACTURE INDICATOR FOR ANKLE REPLACEMENT  
PREVIOUS SURGERY TYPE FOR ANKLE JOINT  
PREVIOUS SURGERY TYPE FOR SHOULDER REPLACEMENT  
PRIMARY SCREENING  
PRINCIPAL DIAGNOSTIC IMAGING TYPE  
PROCEDURE RENAL DIALYSIS ACCESS REPAIR OR REVISION TYPE  
PROCEDURE SIDE RENAL DIALYSIS ACCESS CONSTRUCTION CODE  
PROCEDURE SITE RENAL DIALYSIS ACCESS CONSTRUCTION CODE  
RADIOISOTOPE  
RADIOLOGICAL PROCEDURE TYPE  
RADIOTHERAPY ACTUAL DOSE  
~~RADIOTHERAPY ANATOMICAL TREATMENT SITE~~  
RADIOTHERAPY BEAM TYPE  
RADIOTHERAPY PRESCRIBED DOSE  
RADIOTHERAPY TREATMENT MODALITY  
RATE OF GMP PAYMENT  
REMOVAL REASON TYPE FOR DIALYSIS ACCESS  
RENAL DIALYSIS ACCESS TYPE  
RENAL TRANSPLANT FAILURE CAUSE CODE  
REPROGLE TUBE IN SITU INDICATOR  
RESPIRATORY SUPPORT DEVICE TYPE FOR NATIONAL NEONATAL DATA SET  
RESPIRATORY SUPPORT MODE FOR NATIONAL NEONATAL DATA SET  
RESULT SENT DIRECT  
RETINOPATHY OF PREMATURITY SCREENING OUTCOME STATUS CODE  
REVISION PROCEDURE TYPE FOR ANKLE OR KNEE REPLACEMENT  
REVISION PROCEDURE TYPE FOR ELBOW OR SHOULDER REPLACEMENT  
REVISION PROCEDURE TYPE FOR HIP REPLACEMENT  
ROTATOR CUFF CONDITION  
ROUTINE OR EMERGENCY  
RUPTURE OF MEMBRANES METHOD  
SARCOMA SURGICAL MARGIN  
SCHEDULED SESSION DURING OR OUTSIDE  
SENTINEL LYMPH NODE BIOPSY TYPE  
SIGNIFICANT MATERNAL PYREXIA IN LABOUR INDICATOR  
STEM CELL INFUSION DONOR TYPE  
STEM CELL INFUSION SOURCE CODE  
STENT DEPLOYED SUCCESS INDICATOR  
STEROIDS GIVEN DURING PREGNANCY TO MATURE FETAL LUNGS INDICATOR  
STOMA PRESENT INDICATOR  
SURGICAL ACCESS TYPE

SURGICAL ACCESS TYPE FOR THORACIC  
SURGICAL APPROACH FOR PRIMARY HIP REPLACEMENT  
SURGICAL APPROACH FOR PRIMARY KNEE REPLACEMENT  
SURGICAL APPROACH FOR PRIMARY OR REVISION ANKLE REPLACEMENT  
SURGICAL APPROACH FOR PRIMARY OR REVISION SHOULDER REPLACEMENT  
SURGICAL APPROACH FOR REVISION HIP REPLACEMENT  
SURGICAL APPROACH FOR REVISION KNEE REPLACEMENT  
SURGICAL COMPLICATION TYPE  
SURGICAL DEFAULT TECHNIQUE INDICATOR  
SURGICAL PALLIATION TYPE  
SURGICAL VOICE RESTORATION PERMANENT VALVE REMOVAL REASON  
SYSTEMIC ANTI CANCER THERAPY DRUG ROUTE OF ADMINISTRATION  
SYSTEMIC ANTI CANCER THERAPY PROGRAMME NUMBER  
SYSTEMIC ANTI CANCER THERAPY REGIMEN MODIFICATION INDICATOR  
TELE THERAPY BEAM TYPE  
TELE THERAPY ELECTRON ENERGY  
TELE THERAPY PHOTON ENERGY  
TRACHEOSTOMY TUBE IN SITU INDICATOR  
TREATMENT EXPOSURE TYPE  
TREATMENT TYPE FOR NECROTISING ENTEROCOLITIS  
TREATMENT TYPE FOR PATENT DUCTUS ARTERIOSUS  
UNPLANNED OPERATION INDICATOR  
UNTOWARD INTRAOPERATIVE EVENT CODE FOR ANKLE REPLACEMENT  
UNTOWARD INTRAOPERATIVE EVENT CODE FOR ELBOW REPLACEMENT  
UNTOWARD INTRAOPERATIVE EVENT CODE FOR HIP REPLACEMENT  
UNTOWARD INTRAOPERATIVE EVENT CODE FOR KNEE REPLACEMENT  
UNTOWARD INTRAOPERATIVE EVENT CODE FOR SHOULDER REPLACEMENT  
VACCINATION REASON INDICATOR  
VASCULAR LINE TYPE IN SITU  
VISUAL INSPECTION CONFIRMED NECROTISING ENTEROCOLITIS DURING LAPAROTOMY  
INDICATOR  
VITAMIN K ADMINISTERED INDICATOR  
VITAMIN K ROUTE OF ADMINISTRATION

---

## CURRENCY

---

Change to Class: Changed Relationships

*Each CURRENCY*

- K may be used for one or more SERVICE FINANCIAL ALLOCATION
- may be relate to one or more GMP CLAIM FOR PAYMENT OR REIMBURSEMENT
- ~~may be relate to one or more GMP PAYMENT OR REIMBURSEMENT~~

---

## GMP CLAIM FOR PAYMENT OR REIMBURSEMENT

---

Change to Class: Changed Relationships

*Each GMP CLAIM FOR PAYMENT OR REIMBURSEMENT*

- K must be made by one and only one GENERAL MEDICAL PRACTITIONER
  - K must be made to one and only one ORGANISATION
  - may be made in one and only one CURRENCY
  - ~~may be resultant in one or more GMP PAYMENT OR REIMBURSEMENT~~
  - may be in the context of one and only one ORGANISATION
-

## GMP PAYMENT OR REIMBURSEMENT (RETIRED)\_ renamed from GMP PAYMENT OR REIMBURSEMENT

---

Change to Class: Changed Description, Name, Relationships, status to Retired

~~A transfer of money from a [Primary Care Trust](#) to a [GENERAL MEDICAL PRACTITIONER](#) which may be in response to a [GMP CLAIM FOR PAYMENT OR REIMBURSEMENT](#) or may be an automatic payment for services provided.~~ **This item has been retired from the NHS Data Model and Dictionary.**

**The last live version of this item is available in the February 2014 release of the NHS Data Model and Dictionary.**

**Access to this version can be obtained by emailing [information.standards@hscic.gov.uk](mailto:information.standards@hscic.gov.uk) with "NHS Data Model and Dictionary - Archive Request" in the email subject line.**

---

## GMP PAYMENT OR REIMBURSEMENT (RETIRED)\_ renamed from GMP PAYMENT OR REIMBURSEMENT

---

Change to Class: Changed Description, Name, Relationships, status to Retired

*Each GMP PAYMENT OR REIMBURSEMENT*

- ⌘ ~~must be made to one and only one GENERAL MEDICAL PRACTITIONER~~
  - ⌘ ~~must be made by one and only one ORGANISATION~~
  - ~~may be made in one and only one CURRENCY~~
  - ~~may be the result of one and only one GMP CLAIM FOR PAYMENT OR REIMBURSEMENT~~
- 

## GMP PAYMENT OR REIMBURSEMENT (RETIRED)\_ renamed from GMP PAYMENT OR REIMBURSEMENT

---

Change to Class: Changed Description, Name, Relationships, status to Retired

- Changed Description
  - Changed Name from `Data_Dictionary.Classes.G.GMP_PAYMENT_OR_REIMBURSEMENT` to `Retired.Data_Dictionary.Classes.G.GMP_PAYMENT_OR_REIMBURSEMENT`
  - Changed Relationships
  - Retired GMP PAYMENT OR REIMBURSEMENT
- 

## HEALTH PROGRAMME

---

Change to Class: Changed Description, Attributes, Relationships

~~A programme run by a [Primary Care Trust](#) ([PCT](#)) collaborative with a lead [Primary Care Trust](#) to provide general preventive or advisory services to groups of the population, or specific services to [PATIENTS](#) with identified needs or conditions.~~ **A programme to provide general preventive or advisory services to groups of the population, or specific services to [PATIENTS](#) with identified needs or conditions.**

[HEALTH PROGRAMME TYPE](#) provides a list of [HEALTH PROGRAMMES](#).

---

## HEALTH PROGRAMME

---

Change to Class: Changed Description, Attributes, Relationships

Attributes of this Class are:

⌘ ~~PROGRAMME CODE~~  
BREAST SCREENING AGE GROUP FOR KC62 PARTS 1 TO 3  
BREAST SCREENING AGE GROUP FOR KC62 PARTS 4 TO 5  
BREAST SCREENING AGE GROUP FOR KC63  
BREAST SCREENING READING TYPE  
CERVICAL SCREENING RECALL INTERVAL  
COMMUNITY NURSE STAFF GROUP  
CONTACT TRACING DISEASE TYPE  
HEALTH PROGRAMME TYPE  
HEALTH PROMOTION PROGRAMME AIM  
IMMUNISATION AGE GROUP  
IMMUNISATION PROGRAMME TYPE  
ORAL HEALTH AGE GROUP  
~~PRIMARY COURSE DOSE NUMBER~~  
PROF ADVICE AND SUPPORT STAFF GROUP  
~~PROGRAMME DESCRIPTION~~  
~~PROGRAMME HEADING CODE~~  
~~REINFORCING COURSE DOSE NUMBER~~  
SCREENING CONDITION OR DISEASE  
SCREENING OR PROMOTION INDICATOR  
~~SURVEILLANCE AGE LOWER LIMIT~~  
~~SURVEILLANCE AGE UPPER LIMIT~~  
SURVEILLANCE PROGRAMME GROUP  
VACCINE PREVENTABLE DISEASE

---

## HEALTH PROGRAMME

---

Change to Class: Changed Description, Attributes, Relationships

Each HEALTH PROGRAMME

K must be led by one and only one ORGANISATION  
may be resultant in one or more ACTIVITY  
may be resultant in one or more APPOINTMENT OFFER  
may be subdivided into one or more HEALTH PROGRAMME  
may be a subdivision of one HEALTH PROGRAMME  
may be targeting one or more HEALTH PROGRAMME POPULATION  
may be broken into one or more HEALTH PROGRAMME STAGE  
~~may be reported as one or more HEALTH PROGRAMME STATEMENT~~  
may be the supplier of one or more IMMUNISATION COURSE TYPE  
may be related to one or more PERSON IN PROGRAMME  
may be resultant in one or more PRIOR NOTIFICATION LIST ENTRY  
may be offering one or more SERVICE REQUEST  
may be related to one or more STAFF MEMBER IN PROGRAMME

---

## HEALTH PROGRAMME STATEMENT (RETIRED)\_ renamed from HEALTH PROGRAMME STATEMENT

---

Change to Class: Changed Description, Name, status to Retired

~~A statement, made each financial period, which establishes and reviews local policies and objectives and sets targets for a [HEALTH PROGRAMME](#).~~ **This item has been retired from the NHS Data Model and Dictionary.**

The last live version of this item is available in the February 2014 release of the NHS Data Model and Dictionary.

Access to this version can be obtained by emailing [information.standards@hscic.gov.uk](mailto:information.standards@hscic.gov.uk) with "NHS Data Model and Dictionary - Archive Request" in the email subject line.

---

## HEALTH PROGRAMME STATEMENT (RETIRED)\_ renamed from HEALTH PROGRAMME STATEMENT

---

Change to Class: Changed Description, Name, status to Retired

- Changed Description
- Changed Name from Data\_Dictionary.Classes.H.HEALTH\_PROGRAMME\_STATEMENT to Retired.Data\_Dictionary.Classes.H.HEALTH\_PROGRAMME\_STATEMENT
- Retired HEALTH PROGRAMME STATEMENT

---

## ORGANISATION

---

Change to Class: Changed Attributes, Relationships

*Attributes of this Class are:*

K ORGANISATION CODE  
APPROVED FOR HSPS  
DEPARTMENT OF HEALTH ORGANISATION CODE  
GMP PRACTICE RESTRICTED  
ORGANISATION COMMENT  
ORGANISATION END DATE  
ORGANISATION IDENTIFIER FOR NATIONAL BREAST SCREENING PROGRAMME  
ORGANISATION NAME  
ORGANISATION START DATE  
ORGANISATION TYPE  
PRIMARY CARE TRUST LEVEL

---

## ORGANISATION

---

Change to Class: Changed Attributes, Relationships

*Each ORGANISATION*

may be a supplier of one or more ACTIVITY  
may be the originator of one or more CARE PLAN  
may be the employer of one or more CARE PROFESSIONAL ORGANISATION  
may be related to one or more CLINICAL INVESTIGATION SERVICE PROVIDER  
may be contacted via one or more COMMUNICATION CONTACT INFORMATION  
may be the operator and manager of one or more DEPARTMENT  
may be the employer of one or more EMPLOYEE IN ORGANISATION  
may be agreeing to one or more EMPLOYEE PLAN  
may be associated with one or more GEOGRAPHIC AREA ASSOCIATION  
may be the subject of one or more GMP CLAIM FOR PAYMENT OR REIMBURSEMENT  
may be the recipient of one or more GMP CLAIM FOR PAYMENT OR REIMBURSEMENT  
~~may be the payee of one or more GMP PAYMENT OR REIMBURSEMENT~~  
may be the lead for one or more HEALTH PROGRAMME  
may be the creator and updater of one or more LOCATION  
may be the commissioner of one or more NHS SERVICE AGREEMENT

may be playing one or more ORGANISATION ACTIVITY ROLE  
may be the owner of one or more ORGANISATION DEPARTMENT  
may be recorded as one or more ORGANISATION REGISTRATION  
may be the second party in one or more ORGANISATION RELATIONSHIP  
may be the first party in one or more ORGANISATION RELATIONSHIP  
may be related to one or more ORGANISATION REPORTING PERIOD  
may be the operator or manager of one or more ORGANISATION SITE  
may be the registered organisation for one or more PATIENT ORGANISATION  
may be the issuer of the identifier of one or more PATIENT PATHWAY  
may be the holder of one or more PHARMACEUTICAL PRODUCT STOCK  
may be intending to provide one or more PLANNED ACTIVITY  
may be the controller of one or more POSITION  
may be a fund holder of one or more POSITION NON-NHS FUNDING  
may be the place of treatment for one or more PRIOR NOTIFICATION LIST ENTRY  
may be the owner of one or more PRIOR NOTIFICATION LIST FOR CYTOLOGY  
may be the player of a role within one or more PROVIDER IN SERVICE AGREEMENT  
may be the qualification awarding body of one or more QUALIFICATION  
may be the holder of one or more REGISTER  
may be the provider of one or more RIGHT OF ADMISSION  
may be the requester of one or more SERVICE REPORT  
may be the receiver of a copy of one or more SERVICE REPORT  
may be the issuer of one or more SERVICE REPORT  
may be the originator of one or more SERVICE REQUEST  
~~may be the subject of one or more SINGLE SEX ACCOMMODATION TARGET~~  
may be the provider of one or more TRAINING ACTIVITY  
may be the recipient of one or more TRANSPORT REQUEST  
may be the first recorder of one or more TRANSPORT REQUEST INCIDENT  
may be the responsible owner organisation of one or more WAITING LIST  
may be the receiver of one or more WRITTEN COMPLAINT

---

## REFERRAL REQUEST

---

Change to Class: Changed Attributes

*Attributes of this Class are:*

BENIGN THERAPEUTIC OPERATION INDICATOR  
COLPOSCOPY REFERRAL INDICATION  
COMMISSIONER REFERENCE NUMBER  
OTHER REFERRER CODE  
OUT-PATIENT CLINIC REFERRING INDICATOR  
~~OUT-PATIENT REFERRAL INDICATOR~~  
REASON FOR REFERRAL TO COMMUNITY CARE  
REFERRAL CLOSURE REASON FOR COMMUNITY CARE  
REFERRAL REQUEST ACCEPTANCE INDICATOR  
REFERRAL REQUEST RECEIVED TIME  
REFERRAL REQUEST SERVICE TYPE FOR NHS HEALTH CHECK  
REFERRAL REQUEST TYPE  
SCREENING REFERRAL SOURCE  
SERVICE TYPE REQUESTED  
SERVICE TYPE REQUESTED FOR CHILD AND ADOLESCENT MENTAL HEALTH  
SOURCE OF REFERRAL FOR A and E  
SOURCE OF REFERRAL FOR COMMUNITY  
SOURCE OF REFERRAL FOR COMMUNITY DENTAL  
SOURCE OF REFERRAL FOR DRUG MISUSE

SOURCE OF REFERRAL FOR MENTAL HEALTH  
SOURCE OF REFERRAL FOR OUT-PATIENTS  
SOURCE OF REFERRAL FOR PROF STAFF GROUP  
TWO WEEK WAIT CANCER OR SYMPTOMATIC BREAST REFERRAL TYPE  
TWO WEEK WAIT EXCLUSION INDICATOR

---

## REPORTING PERIOD

---

Change to Class: Changed Relationships

*Each REPORTING PERIOD*

- ~~may be reported on within one or more HEALTH PROGRAMME STATEMENT~~
  - may be for one or more ORGANISATION REPORTING PERIOD
  - may be allocated during one or more SERVICE FINANCIAL ALLOCATION
  - may be related to one or more STAFF MEMBER IN PERIOD
  - may be related to one or more STAFF MEMBER IN PROGRAMME IN PERIOD
- 

## SINGLE SEX ACCOMMODATION TARGET (RETIRED)\_ renamed from SINGLE SEX ACCOMMODATION TARGET

---

Change to Class: Changed Description, Name, status to Retired

~~A target for monitoring the implementation of standards for the provision of acceptable segregated hospital accommodation. The objective target may be:~~ **This item has been retired from the NHS Data Model and Dictionary.**

- ~~ensuring that the appropriate organisational arrangements, for example procedures, are in place to secure good standards of privacy and dignity for hospital patients,~~
- ~~segregated washing and toilet facilities or~~
- ~~providing single sex safe facilities for people who are mentally ill in hospital which protect their privacy and dignity.~~

~~A [SINGLE SEX TARGET DATE](#) for achieving the target is agreed between the [Primary Care Trust](#) and [Strategic Health Authority](#) [ORGANISATIONS](#). A revision to this date, the [SINGLE SEX TARGET REVISED DATE](#), may be agreed with the [Strategic Health Authority](#) if the original target date cannot be met.~~ **The last live version of this item is available in the February 2014 release of the NHS Data Model and Dictionary.**

**Access to this version can be obtained by emailing [information.standards@hscic.gov.uk](mailto:information.standards@hscic.gov.uk) with "NHS Data Model and Dictionary - Archive Request" in the email subject line.**

---

## SINGLE SEX ACCOMMODATION TARGET (RETIRED)\_ renamed from SINGLE SEX ACCOMMODATION TARGET

---

Change to Class: Changed Description, Name, status to Retired

- Changed Description
  - Changed Name from Data\_Dictionary.Classes.S.SINGLE\_SEX\_ACCOMMODATION\_TARGET to Retired.Data\_Dictionary.Classes.S.SINGLE\_SEX\_ACCOMMODATION\_TARGET
  - Retired SINGLE SEX ACCOMMODATION TARGET
- 

## TOBACCO USAGE

---



Change to Class: Changed Attributes

Attributes of this Class are:

CIGARETTES PER DAY  
~~DATE STOPPED SMOKING~~  
SMOKING STATUS  
SMOKING STATUS FOR MATERNITY

---

## ACTIVITY GROUP TYPE

---

Change to Attribute: Changed Description

The type of [ACTIVITY GROUP](#).

National Codes:

- 01 [Accident and Emergency Episode](#)
- 02 Acute Myocardial Infarction Care Spell (Retired July 2012)
- 03 Augmented Care Period (Retired 1 April 2006)
- 04 [Breast Cancer Care Spell](#)
- 05 [Cancer Care Spell](#)
- 06 [Care Home Stay \(Consultant Care\)](#)
- 07 [Care Home Stay \(Midwife Care\)](#)
- 08 [Care Home Stay \(Nursing Care\)](#)
- 09 [Care Home Stay \(Residential\)](#)
- 10 [Care Programme Approach Episode](#)
- 11 [Colorectal Cancer Care Spell](#)
- 12 [Community Episode](#)
- 13 [Mental Health Care Professional Episode \(Acute Home-Based\)](#)
- 14 [Consultant Episode \(Hospital Provider\)](#)
- 15 [Consultant Out-Patient Episode](#)
- 16 [Dental Episode](#)
- 17 [Drug Misuse Episode](#)
- 18 [Sexual Health And HIV Episode](#)
- 19 [Head and Neck Cancer Care Spell](#)
- 20 [Home Dialysis Episode](#)
- 21 [Hospital Provider Spell](#)
- 22 [Lung Cancer Care Spell](#)
- 23 [Adult Mental Health Care Spell](#)
- 24 [Midwife Episode](#)
- 25 [Neonatal Level Of Care Period](#)
- 26 [Nursing Episode](#)
- 27 [Palliative Care Episode](#)
- 28 [Person Stop Smoking Episode](#)
- 29 [Pregnancy Episode](#)
- 30 [Professional Staff Group Episode](#)
- 31 [Regular Attender Episode](#)
- 32 Road Traffic Accident Treatment
- 33 [Sarcoma Care Spell](#)
- 34 [Skin Cancer Care Spell](#)
- 35 ~~[Supervised Discharge Episode](#)~~
- 36 ~~[Supervision Register Episode](#)~~
- 35 [Supervised Discharge Episode \(Retired 01 April 2014\)](#)
- 36 [Supervision Register Episode \(Retired 01 April 2014\)](#)
- 37 [Upper Gastrointestinal Cancer Care Spell](#)
- 38 [Urological Cancer Care Spell](#)
- 39 [Ward Stay](#)

- 40 [Hospital Stay](#)
- 41 [Care Spell](#)
- 42 [CRITICAL CARE PERIOD](#)
- 43 [PATIENT PATHWAY](#)
- 44 [REFERRAL TO TREATMENT PERIOD](#)
- 45 [Active Monitoring](#)
- 46 [Supervised Community Treatment Recall](#)
- 47 [Supervised Community Treatment](#)
- 48 [Mental Health Care Without Patient Consent](#)
- 49 [Cancer Treatment Period](#)
- 50 [Gynaecological Cancer Care Spell](#)
- 51 [Mental Health Care Spell](#)
- 52 [Improving Access to Psychological Therapies Care Spell](#)
- 53 [Adult Mental Health Care Team Episode](#)
- 54 [Mental Health NHS Day Care Episode](#)
- 55 [Mental Health Delayed Discharge Period](#)
- 56 [Mental Health Care Cluster Assignment Period](#)
- 57 [Mental Health Care Coordinator Assignment](#)
- 58 [Child and Adolescent Mental Health Clinical Intervention Episode](#)
- 59 [Child and Adolescent Mental Health Care Spell](#)
- 60 [Maternity Episode](#)
- 61 [HIV Episode](#)
- 62 [Central Nervous System Cancer Care Spell](#)
- 63 [Children Teenagers and Young Adults Cancer Care Spell](#)
- 64 [Haematology Cancer Care Spell](#)
- 65 [Lung Cancer Care Spell](#)
- 66 [Commissioner Assignment Period](#)
- 67 [Breast Screening Episode](#)
- 68 [High Risk Breast Screening Episode](#)
- 69 [Open Breast Screening Episode](#)
- 70 [Neonatal Critical Care Spell](#)
- 71 [Radiotherapy Episode](#)

Note:

The list is not in alphabetical order.

## **ACTUAL EXPENDITURE (RETIRED)\_ renamed from ACTUAL EXPENDITURE**

Change to Attribute: Changed Description, Name, status to Retired

~~This records the estimated actual expenditure for a [HEALTH PROGRAMME](#).~~ **This item has been retired from the NHS Data Model and Dictionary.**

~~Expenditure on community health programmes will be produced using estimates of staff time devoted to each [HEALTH PROGRAMME](#). For national purposes, expenditure by type of programme only will be required.~~ **The last live version of this item is available in the February 2014 release of the NHS Data Model and Dictionary.**

**Access to this version can be obtained by emailing [information.standards@hscic.gov.uk](mailto:information.standards@hscic.gov.uk) with "NHS Data Model and Dictionary - Archive Request" in the email subject line.**

## **ACTUAL EXPENDITURE (RETIRED)\_ renamed from ACTUAL EXPENDITURE**

---

Change to Attribute: Changed Description, Name, status to Retired

- Changed Description
- Changed Name from Data\_Dictionary.Attributes.A.Acc.ACTUAL\_EXPENDITURE to Retired.Data\_Dictionary.Attributes.A.ACTUAL\_EXPENDITURE
- Retired ACTUAL EXPENDITURE

---

### AGE LOWER LIMIT (RETIRED)\_ renamed from AGE LOWER LIMIT

---

Change to Attribute: Changed Description, Name, status to Retired

The lower age limit of a [HEALTH PROGRAMME](#). This item has been retired from the NHS Data Model and Dictionary.

The last live version of this item is available in the February 2014 release of the NHS Data Model and Dictionary.

Access to this version can be obtained by emailing [information.standards@hscic.gov.uk](mailto:information.standards@hscic.gov.uk) with "NHS Data Model and Dictionary - Archive Request" in the email subject line.

---

### AGE LOWER LIMIT (RETIRED)\_ renamed from AGE LOWER LIMIT

---

Change to Attribute: Changed Description, Name, status to Retired

- Changed Description
- Changed Name from Data\_Dictionary.Attributes.A.Age.AGE\_LOWER\_LIMIT to Retired.Data\_Dictionary.Attributes.A.AGE\_LOWER\_LIMIT
- Retired AGE LOWER LIMIT

---

### AGE UPPER LIMIT (RETIRED)\_ renamed from AGE UPPER LIMIT

---

Change to Attribute: Changed Description, Name, status to Retired

The upper age limit of a [PATIENT](#) within a [HEALTH PROGRAMME](#). This item has been retired from the NHS Data Model and Dictionary.

The last live version of this item is available in the February 2014 release of the NHS Data Model and Dictionary.

Access to this version can be obtained by emailing [information.standards@hscic.gov.uk](mailto:information.standards@hscic.gov.uk) with "NHS Data Model and Dictionary - Archive Request" in the email subject line.

---

### AGE UPPER LIMIT (RETIRED)\_ renamed from AGE UPPER LIMIT

---

Change to Attribute: Changed Description, Name, status to Retired

- Changed Description
- Changed Name from Data\_Dictionary.Attributes.A.Age.AGE\_UPPER\_LIMIT to Retired.Data\_Dictionary.Attributes.A.AGE\_UPPER\_LIMIT
- Retired AGE UPPER LIMIT

## COVERAGE ACHIEVED (RETIRED)\_ renamed from COVERAGE ACHIEVED

---

Change to Attribute: Changed Description, Name, status to Retired

This is recorded for services to the community only and measures the extent to which the [HEALTH PROGRAMME](#) is reaching its target population. This is normally measured as a percentage of the target population. **This item has been retired from the NHS Data Model and Dictionary.**

**The last live version of this item is available in the February 2014 release of the NHS Data Model and Dictionary.**

**Access to this version can be obtained by emailing [information.standards@hscic.gov.uk](mailto:information.standards@hscic.gov.uk) with "NHS Data Model and Dictionary - Archive Request" in the email subject line.**

---

## COVERAGE ACHIEVED (RETIRED)\_ renamed from COVERAGE ACHIEVED

---

Change to Attribute: Changed Description, Name, status to Retired

- Changed Description
  - Changed Name from Data\_Dictionary.Attributes.C.Cou.COVERAGE\_ACHIEVED to Retired.Data\_Dictionary.Attributes.C.COVERAGE\_ACHIEVED
  - Retired COVERAGE ACHIEVED
- 

## DATE STOPPED SMOKING (RETIRED)\_ renamed from DATE STOPPED SMOKING

---

Change to Attribute: Changed Description, Name, status to Retired

The date on which the [PERSON](#) stopped smoking where they are an ex-smoker. If the exact date is not known, then the year should be recorded. **This item has been retired from the NHS Data Model and Dictionary.**

**The last live version of this item is available in the February 2014 release of the NHS Data Model and Dictionary.**

**Access to this version can be obtained by emailing [information.standards@hscic.gov.uk](mailto:information.standards@hscic.gov.uk) with "NHS Data Model and Dictionary - Archive Request" in the email subject line.**

---

## DATE STOPPED SMOKING (RETIRED)\_ renamed from DATE STOPPED SMOKING

---

Change to Attribute: Changed Description, Name, status to Retired

- Changed Description
  - Changed Name from Data\_Dictionary.Attributes.D.DATE\_STOPPED\_SMOKING to Retired.Data\_Dictionary.Attributes.D.DATE\_STOPPED\_SMOKING
  - Retired DATE STOPPED SMOKING
- 

## GMP PAYMENT NUMBER (RETIRED)\_ renamed from GMP PAYMENT NUMBER

---

Change to Attribute: Changed Description, Name, status to Retired

The identifier allocated to a [GMP PAYMENT OR REIMBURSEMENT](#) by the [Primary Care Trust](#). **This item has been retired from the NHS Data Model and Dictionary.**

The last live version of this item is available in the February 2014 release of the NHS Data Model and Dictionary.

Access to this version can be obtained by emailing [information.standards@hscic.gov.uk](mailto:information.standards@hscic.gov.uk) with "NHS Data Model and Dictionary - Archive Request" in the email subject line.

---

### GMP PAYMENT NUMBER (RETIRED)\_ renamed from GMP PAYMENT NUMBER

---

Change to Attribute: Changed Description, Name, status to Retired

- Changed Description
- Changed Name from Data\_Dictionary.Attributes.G.GMP.GMP\_PAYMENT\_NUMBER to Retired.Data\_Dictionary.Attributes.G.GMP\_PAYMENT\_NUMBER
- Retired GMP PAYMENT NUMBER

---

### GMP PAYMENT OR REIMBURSEMENT AMOUNT (RETIRED)\_\_ renamed from GMP PAYMENT OR REIMBURSEMENT AMOUNT

---

Change to Attribute: Changed Description, Name, status to Retired

~~The amount of money received by the [GENERAL MEDICAL PRACTITIONER](#).~~ This item has been retired from the NHS Data Model and Dictionary.

The last live version of this item is available in the February 2014 release of the NHS Data Model and Dictionary.

Access to this version can be obtained by emailing [information.standards@hscic.gov.uk](mailto:information.standards@hscic.gov.uk) with "NHS Data Model and Dictionary - Archive Request" in the email subject line.

---

### GMP PAYMENT OR REIMBURSEMENT AMOUNT (RETIRED)\_\_ renamed from GMP PAYMENT OR REIMBURSEMENT AMOUNT

---

Change to Attribute: Changed Description, Name, status to Retired

- Changed Description
- Changed Name from Data\_Dictionary.Attributes.G.GMP.GMP\_PAYMENT\_OR\_REIMBURSEMENT\_AMOUNT to Retired.Data\_Dictionary.Attributes.G.GMP\_PAYMENT\_OR\_REIMBURSEMENT\_AMOUNT
- Retired GMP PAYMENT OR REIMBURSEMENT AMOUNT

---

### GMP PAYMENT OR REIMBURSEMENT DATE (RETIRED)\_ renamed from GMP PAYMENT OR REIMBURSEMENT DATE

---

Change to Attribute: Changed Description, Name, status to Retired

~~The date on which the actual transfer of funds associated with a [GMP PAYMENT OR REIMBURSEMENT](#) was completed.~~ This item has been retired from the NHS Data Model and Dictionary.

The last live version of this item is available in the February 2014 release of the NHS Data Model and Dictionary.

Access to this version can be obtained by emailing [information.standards@hscic.gov.uk](mailto:information.standards@hscic.gov.uk) with "NHS

Data Model and Dictionary - Archive Request" in the email subject line.

---

## **GMP PAYMENT OR REIMBURSEMENT DATE (RETIRED)\_ renamed from GMP PAYMENT OR REIMBURSEMENT DATE**

---

Change to Attribute: Changed Description, Name, status to Retired

- Changed Description
  - Changed Name from Data\_Dictionary.Attributes.G.GMP.GMP\_PAYMENT\_OR\_REIMBURSEMENT\_DATE to Retired.Data\_Dictionary.Attributes.G.GMP\_PAYMENT\_OR\_REIMBURSEMENT\_DATE
  - Retired GMP PAYMENT OR REIMBURSEMENT DATE
- 

## **LEVEL OF SERVICE PROVIDED (RETIRED)\_ renamed from LEVEL OF SERVICE PROVIDED**

---

Change to Attribute: Changed Description, Name, status to Retired

~~The level of service provided which is recorded in a [HEALTH PROGRAMME STATEMENT](#). It is the level of care that has been provided to a given target population, expressed as a percentage of the target level of care. This item has been retired from the NHS Data Model and Dictionary.~~

**The last live version of this item is available in the February 2014 release of the NHS Data Model and Dictionary.**

**Access to this version can be obtained by emailing [information.standards@hscic.gov.uk](mailto:information.standards@hscic.gov.uk) with "NHS Data Model and Dictionary - Archive Request" in the email subject line.**

---

## **LEVEL OF SERVICE PROVIDED (RETIRED)\_ renamed from LEVEL OF SERVICE PROVIDED**

---

Change to Attribute: Changed Description, Name, status to Retired

- Changed Description
  - Changed Name from Data\_Dictionary.Attributes.L.Len.LEVEL\_OF\_SERVICE\_PROVIDED to Retired.Data\_Dictionary.Attributes.L.LEVEL\_OF\_SERVICE\_PROVIDED
  - Retired LEVEL OF SERVICE PROVIDED
- 

## **LOCAL AUTHORITY SERVICES (RETIRED)\_ renamed from LOCAL AUTHORITY SERVICES**

---

Change to Attribute: Changed Description, Name, status to Retired

~~This is recorded for nursing care in the community only. It records information about existing and planned [Local Authority](#) and voluntary sector services, such as the provision of day care, residential and domiciliary services. This item has been retired from the NHS Data Model and Dictionary.~~

~~The information is required to facilitate the planning and delivery of health services. The last live version of this item is available in the February 2014 release of the NHS Data Model and Dictionary.~~

**Access to this version can be obtained by emailing [information.standards@hscic.gov.uk](mailto:information.standards@hscic.gov.uk) with "NHS Data Model and Dictionary - Archive Request" in the email subject line.**

---

## LOCAL AUTHORITY SERVICES (RETIRED)\_ renamed from LOCAL AUTHORITY SERVICES

---

Change to Attribute: Changed Description, Name, status to Retired

- Changed Description
  - Changed Name from Data\_Dictionary.Attributes.L.Lo.LOCAL\_AUTHORITY\_SERVICES to Retired.Data\_Dictionary.Attributes.L.LOCAL\_AUTHORITY\_SERVICES
  - Retired LOCAL AUTHORITY SERVICES
- 

## LOCAL POLICY AND OBJECTIVES (RETIRED)\_ renamed from LOCAL POLICY AND OBJECTIVES

---

Change to Attribute: Changed Description, Name, status to Retired

~~This will be mainly a matter for local discretion. For services to the community, this should include a target level of coverage. For nursing care in the community, this should include the planned balance between hospital and community care and anticipated implications for the hospital and community health services.~~**This item has been retired from the NHS Data Model and Dictionary.**

**The last live version of this item is available in the February 2014 release of the NHS Data Model and Dictionary.**

**Access to this version can be obtained by emailing [information.standards@hscic.gov.uk](mailto:information.standards@hscic.gov.uk) with "NHS Data Model and Dictionary - Archive Request" in the email subject line.**

---

## LOCAL POLICY AND OBJECTIVES (RETIRED)\_ renamed from LOCAL POLICY AND OBJECTIVES

---

Change to Attribute: Changed Description, Name, status to Retired

- Changed Description
  - Changed Name from Data\_Dictionary.Attributes.L.Lo.LOCAL\_POLICY\_AND\_OBJECTIVES to Retired.Data\_Dictionary.Attributes.L.LOCAL\_POLICY\_AND\_OBJECTIVES
  - Retired LOCAL POLICY AND OBJECTIVES
- 

## OUT-PATIENT REFERRAL INDICATOR (RETIRED)\_ renamed from OUT-PATIENT REFERRAL INDICATOR

---

Change to Attribute: Changed Description, Name, status to Retired

~~An indication of whether a [REFERRAL REQUEST](#) is for a [Consultant Out-Patient Episode](#).~~**This item has been retired from the NHS Data Model and Dictionary.**

~~*Classification:*~~**The last live version of this item is available in the February 2014 release of the NHS Data Model and Dictionary.**

- a. Yes
- b. No

**Access to this version can be obtained by emailing [information.standards@hscic.gov.uk](mailto:information.standards@hscic.gov.uk) with "NHS Data Model and Dictionary - Archive Request" in the email subject line.**

---

## OUT-PATIENT REFERRAL INDICATOR (RETIRED)\_ renamed from OUT-PATIENT REFERRAL INDICATOR

---

Change to Attribute: Changed Description, Name, status to Retired

- Changed Description
  - Changed Name from Data\_Dictionary.Attributes.O.Out.OUT-PATIENT\_REFERRAL\_INDICATOR to Retired.Data\_Dictionary.Attributes.O.OUT-PATIENT\_REFERRAL\_INDICATOR
  - Retired OUT-PATIENT REFERRAL INDICATOR
- 

## PRIMARY CARE COMMUNICATION SENT DATE (RETIRED)\_ renamed from PRIMARY CARE COMMUNICATION SENT DATE

---

Change to Attribute: Changed Description, Name, status to Retired

The date on which communication was first sent to primary care regarding the [Cancer Care Plan](#) for head and neck cancer. **This item has been retired from the NHS Data Model and Dictionary.**

**The last live version of this item is available in the February 2014 release of the NHS Data Model and Dictionary.**

**Access to this version can be obtained by emailing [information.standards@hscic.gov.uk](mailto:information.standards@hscic.gov.uk) with "NHS Data Model and Dictionary - Archive Request" in the email subject line.**

---

## PRIMARY CARE COMMUNICATION SENT DATE (RETIRED)\_ renamed from PRIMARY CARE COMMUNICATION SENT DATE

---

Change to Attribute: Changed Description, Name, status to Retired

- Changed Description
  - Changed Name from Data\_Dictionary.Attributes.P.Prev.PRIMARY\_CARE\_COMMUNICATION\_SENT\_DATE to Retired.Data\_Dictionary.Attributes.P.PRIMARY\_CARE\_COMMUNICATION\_SENT\_DATE
  - Retired PRIMARY CARE COMMUNICATION SENT DATE
- 

## PRIMARY CARE TRUST LEVEL (RETIRED)\_ renamed from PRIMARY CARE TRUST LEVEL

---

Change to Attribute: Changed Description, Name, status to Retired

The level at which a [Primary Care Trust](#) is limited on the functions it can exercise. **This item has been retired from the NHS Data Model and Dictionary.**

*Classification:* **The last live version of this item is available in the February 2014 release of the NHS Data Model and Dictionary.**

- a. Level 3: a commissioning body only
- b. Level 4: a commissioning and Health Care Provider body

**Access to this version can be obtained by emailing [information.standards@hscic.gov.uk](mailto:information.standards@hscic.gov.uk) with "NHS Data Model and Dictionary - Archive Request" in the email subject line.**



---

## PRIMARY CARE TRUST LEVEL (RETIRED)\_ renamed from PRIMARY CARE TRUST LEVEL

---

Change to Attribute: Changed Description, Name, status to Retired

- Changed Description
  - Changed Name from Data\_Dictionary.Attributes.P.Prev.PRIMARY\_CARE\_TRUST\_LEVEL to Retired.Data\_Dictionary.Attributes.P.PRIMARY\_CARE\_TRUST\_LEVEL
  - Retired PRIMARY CARE TRUST LEVEL
- 

## PRIMARY COURSE DOSE NUMBER (RETIRED)\_ renamed from PRIMARY COURSE DOSE NUMBER

---

Change to Attribute: Changed Description, Name, status to Retired

~~The number of recommended doses required to complete a primary course for a particular [Immunisation Programme](#) for an [VACCINE PREVENTABLE DISEASE](#). For example, for a primary course of immunisation against Diphtheria, it is recommended that 3 doses be given. The number of doses recommended may vary depending on the age of the [PATIENT](#). For example, Haemophilus influenzae type b (Hib) primary course consists of 3 doses before thirteen months or one dose thereafter and immunisation against Group C meningococcal disease (MenC) requires 2 or 3 doses before 12 months according to age at vaccination or one dose thereafter.~~ **This item has been retired from the NHS Data Model and Dictionary.**

**The last live version of this item is available in the February 2014 release of the NHS Data Model and Dictionary.**

**Access to this version can be obtained by emailing [information.standards@hscic.gov.uk](mailto:information.standards@hscic.gov.uk) with "NHS Data Model and Dictionary - Archive Request" in the email subject line.**

---

## PRIMARY COURSE DOSE NUMBER (RETIRED)\_ renamed from PRIMARY COURSE DOSE NUMBER

---

Change to Attribute: Changed Description, Name, status to Retired

- Changed Description
  - Changed Name from Data\_Dictionary.Attributes.P.Prev.PRIMARY\_COURSE\_DOSE\_NUMBER to Retired.Data\_Dictionary.Attributes.P.PRIMARY\_COURSE\_DOSE\_NUMBER
  - Retired PRIMARY COURSE DOSE NUMBER
- 

## PROGRAMME CODE (RETIRED)\_ renamed from PROGRAMME CODE

---

Change to Attribute: Changed Description, Name, status to Retired

~~A unique identifier for each [HEALTH PROGRAMME](#) within a [Primary Care Trust](#).~~ **This item has been retired from the NHS Data Model and Dictionary.**

**The last live version of this item is available in the February 2014 release of the NHS Data Model and Dictionary.**

**Access to this version can be obtained by emailing [information.standards@hscic.gov.uk](mailto:information.standards@hscic.gov.uk) with "NHS Data Model and Dictionary - Archive Request" in the email subject line.**

---

## PROGRAMME CODE (RETIRED)\_ renamed from PROGRAMME CODE

---

Change to Attribute: Changed Description, Name, status to Retired

- Changed Description
  - Changed Name from Data\_Dictionary.Attributes.P.Prog.PROGRAMME\_CODE to Retired.Data\_Dictionary.Attributes.P.PROGRAMME\_CODE
  - Retired PROGRAMME CODE
- 

## PROGRAMME DESCRIPTION (RETIRED)\_ renamed from PROGRAMME DESCRIPTION

---

Change to Attribute: Changed Description, Name, status to Retired

~~A description of a [HEALTH PROGRAMME](#). This item has been retired from the NHS Data Model and Dictionary.~~

~~The last live version of this item is available in the February 2014 release of the NHS Data Model and Dictionary.~~

~~Access to this version can be obtained by emailing [information.standards@hscic.gov.uk](mailto:information.standards@hscic.gov.uk) with "NHS Data Model and Dictionary - Archive Request" in the email subject line.~~

---

## PROGRAMME DESCRIPTION (RETIRED)\_ renamed from PROGRAMME DESCRIPTION

---

Change to Attribute: Changed Description, Name, status to Retired

- Changed Description
  - Changed Name from Data\_Dictionary.Attributes.P.Prog.PROGRAMME\_DESCRIPTION to Retired.Data\_Dictionary.Attributes.P.PROGRAMME\_DESCRIPTION
  - Retired PROGRAMME DESCRIPTION
- 

## PROGRAMME HEADING CODE (RETIRED)\_ renamed from PROGRAMME HEADING CODE

---

Change to Attribute: Changed Description, Name, status to Retired

~~A classification of [HEALTH PROGRAMME](#) or other services in the community for financial accounting purposes to which costs and workload are attributed by [CARE PROFESSIONALS](#) when providing general preventative or advisory services to groups of the population, or specific services to people with identified needs or conditions. This item has been retired from the NHS Data Model and Dictionary.~~

~~*Classification:* The last live version of this item is available in the February 2014 release of the NHS Data Model and Dictionary.~~

- ~~a: Paediatric Community Services - Assessment and Development~~
- ~~b: Paediatric Community Services - Vaccination & Immunisation~~
- ~~c: Paediatric Community Services - Dental~~
- ~~d: Paediatric Community Services - Other Professional Advice & Support~~
- ~~e: Mental Illness~~
- ~~f: Learning Disabilities~~
- ~~g: General - Professional Advice & Support~~
- ~~h: General - Nursing~~
- ~~i: General - Chiropody~~
- ~~j: General - Other professional staff group~~
- ~~k: General - Screening~~

- t: ~~General – Home Dialysis~~
- m: ~~General – Sexual and Reproductive Health~~
- n: ~~Maternity Services~~
- o: ~~Services to GPs under open access~~
- p: ~~Services for Local Authorities~~
- q: ~~Health Education and Promotion~~
- r: ~~Other services~~

Access to this version can be obtained by emailing [information.standards@hscic.gov.uk](mailto:information.standards@hscic.gov.uk) with "NHS Data Model and Dictionary - Archive Request" in the email subject line.

## PROGRAMME HEADING CODE (RETIRED)\_ renamed from PROGRAMME HEADING CODE

Change to Attribute: Changed Description, Name, status to Retired

- Changed Description
- Changed Name from Data\_Dictionary.Attributes.P.Prog.PROGRAMME\_HEADING\_CODE to Retired.Data\_Dictionary.Attributes.P.PROGRAMME\_HEADING\_CODE
- Retired PROGRAMME HEADING CODE

## PROJECTED EXPENDITURE (RETIRED)\_ renamed from PROJECTED EXPENDITURE

Change to Attribute: Changed Description, Name, status to Retired

~~This records the estimated projected expenditure for the [HEALTH PROGRAMME](#).~~ This item has been retired from the NHS Data Model and Dictionary.

The last live version of this item is available in the February 2014 release of the NHS Data Model and Dictionary.

Access to this version can be obtained by emailing [information.standards@hscic.gov.uk](mailto:information.standards@hscic.gov.uk) with "NHS Data Model and Dictionary - Archive Request" in the email subject line.

## PROJECTED EXPENDITURE (RETIRED)\_ renamed from PROJECTED EXPENDITURE

Change to Attribute: Changed Description, Name, status to Retired

- Changed Description
- Changed Name from Data\_Dictionary.Attributes.P.Prog.PROJECTED\_EXPENDITURE to Retired.Data\_Dictionary.Attributes.P.PROJECTED\_EXPENDITURE
- Retired PROJECTED EXPENDITURE

## RADIOTHERAPY ANATOMICAL TREATMENT SITE (RETIRED)\_ renamed from RADIOTHERAPY ANATOMICAL TREATMENT SITE

Change to Attribute: Changed Description, Name, status to Retired

~~The part of the body to which the [RADIOTHERAPY ACTUAL DOSE](#) is administered.~~ This item has been retired from the NHS Data Model and Dictionary.

The last live version of this item is available in the February 2014 release of the NHS Data Model and Dictionary.

Access to this version can be obtained by emailing [information.standards@hscic.gov.uk](mailto:information.standards@hscic.gov.uk) with "NHS Data Model and Dictionary - Archive Request" in the email subject line.

---

## RADIOTHERAPY ANATOMICAL TREATMENT SITE (RETIRED) renamed from RADIOTHERAPY ANATOMICAL TREATMENT SITE

---

Change to Attribute: Changed Description, Name, status to Retired

- Changed Description
  - Changed Name from Data\_Dictionary.Attributes.R.Radiot.RADIOTHERAPY\_ANATOMICAL\_TREATMENT\_SITE to Retired.Data\_Dictionary.Attributes.R.RADIOTHERAPY\_ANATOMICAL\_TREATMENT\_SITE
  - Retired RADIOTHERAPY ANATOMICAL TREATMENT SITE
- 

## RATE OF GMP PAYMENT

---

Change to Attribute: Changed Description

~~The rate of payment for a [Vaccination Service](#) that a [GENERAL MEDICAL PRACTITIONER](#) may claim for the service provided.~~ The rate of payment for a Vaccination Service that a [GENERAL MEDICAL PRACTITIONER](#) may claim for the service provided.

Note that these payments do not apply to those [GENERAL MEDICAL PRACTITIONERS](#) who hold a Personal Medical Services, as opposed to a General Medical Services, contract.

*Classification:*

- a. Rate A
- b. Rate B

References:

Statement of Fees and Allowances Payable to General Medical Practitioners in England and Wales.

---

## REGISTRATION DATE

---

Change to Attribute: Changed Description

~~The date of a [Patient Registration](#) at an [Out-Patient Clinic](#).~~ The date a [PATIENT](#) registers at an [Out-Patient Clinic](#).

---

## REINFORCING COURSE DOSE NUMBER (RETIRED) renamed from REINFORCING COURSE DOSE NUMBER

---

Change to Attribute: Changed Description, Name, status to Retired

~~The number of doses required to complete a reinforcing or booster course for a particular [Immunisation Programme](#) for an IMMUNISATION DISEASE.~~ This item has been retired from the NHS Data Model and Dictionary.

~~For example, for a reinforcing course of immunisation against Diphtheria, it is recommended that 2 doses be given routinely. Further reinforcing doses may be required at 10 yearly intervals for travellers to diphtheria endemic regions but these would be part of a new reinforcing or booster course.~~**The last live version of this item is available in the February 2014 release of the NHS Data Model and Dictionary.**

**Access to this version can be obtained by emailing [information.standards@hscic.gov.uk](mailto:information.standards@hscic.gov.uk) with "NHS Data Model and Dictionary - Archive Request" in the email subject line.**

---

## **REINFORCING COURSE DOSE NUMBER (RETIRED)\_ renamed from REINFORCING COURSE DOSE NUMBER**

---

Change to Attribute: Changed Description, Name, status to Retired

- Changed Description
- Changed Name from Data\_Dictionary.Attributes.R.Red.REINFORCING\_COURSE\_DOSE\_NUMBER to Retired.Data\_Dictionary.Attributes.R.REINFORCING\_COURSE\_DOSE\_NUMBER
- Retired REINFORCING COURSE DOSE NUMBER

---

## **SINGLE SEX TARGET DATE (RETIRED)\_ renamed from SINGLE SEX TARGET DATE**

---

Change to Attribute: Changed Description, Name, status to Retired

~~The original target date agreed by the [ORGANISATION](#) with the [Strategic Health Authority](#) for achieving the [SINGLE SEX TARGET OBJECTIVE](#).~~**This item has been retired from the NHS Data Model and Dictionary.**

**The last live version of this item is available in the February 2014 release of the NHS Data Model and Dictionary.**

**Access to this version can be obtained by emailing [information.standards@hscic.gov.uk](mailto:information.standards@hscic.gov.uk) with "NHS Data Model and Dictionary - Archive Request" in the email subject line.**

---

## **SINGLE SEX TARGET DATE (RETIRED)\_ renamed from SINGLE SEX TARGET DATE**

---

Change to Attribute: Changed Description, Name, status to Retired

- Changed Description
- Changed Name from Data\_Dictionary.Attributes.S.Sig.SINGLE\_SEX\_TARGET\_DATE to Retired.Data\_Dictionary.Attributes.S.SINGLE\_SEX\_TARGET\_DATE
- Retired SINGLE SEX TARGET DATE

---

## **SINGLE SEX TARGET MET DATE (RETIRED)**

---

Change to Attribute: New Attribute

**This item has been retired from the NHS Data Model and Dictionary.**

**The last live version of this item is available in the February 2014 release of the NHS Data Model and Dictionary.**

**Access to this version can be obtained by emailing [information.standards@hscic.gov.uk](mailto:information.standards@hscic.gov.uk) with "NHS**

Data Model and Dictionary - Archive Request" in the email subject line.

This attribute is also known by these names:

Context	Alias
plural	SINGLE SEX TARGET MET DATES

---

### SINGLE SEX TARGET OBJECTIVE (RETIRED)\_ renamed from SINGLE SEX TARGET OBJECTIVE

---

Change to Attribute: Changed Description, Name, status to Retired

The objective of a ~~SINGLE SEX ACCOMMODATION TARGET~~. This item has been retired from the NHS Data Model and Dictionary.

*Classification:* The last live version of this item is available in the February 2014 release of the NHS Data Model and Dictionary.

- a. ~~Ensuring the appropriate organisational arrangements, for example procedures, are in place to secure good standards of privacy and dignity for hospital patients~~
- b. ~~Fully achieving segregated washing and toilet facilities~~
- c. ~~Providing safe facilities, including single sex facilities, for people who are mentally ill in hospital which protect their privacy and dignity~~

Access to this version can be obtained by emailing [information.standards@hscic.gov.uk](mailto:information.standards@hscic.gov.uk) with "NHS Data Model and Dictionary - Archive Request" in the email subject line.

---

### SINGLE SEX TARGET OBJECTIVE (RETIRED)\_ renamed from SINGLE SEX TARGET OBJECTIVE

---

Change to Attribute: Changed Description, Name, status to Retired

- Changed Description
- Changed Name from Data\_Dictionary.Attributes.S.Sig.SINGLE\_SEX\_TARGET\_OBJECTIVE to Retired.Data\_Dictionary.Attributes.S.SINGLE\_SEX\_TARGET\_OBJECTIVE
- Retired SINGLE SEX TARGET OBJECTIVE

---

### SINGLE SEX TARGET REVISED DATE (RETIRED)\_ renamed from SINGLE SEX TARGET REVISED DATE

---

Change to Attribute: Changed Description, Name, status to Retired

The revised target date agreed by the ~~ORGANISATION~~ with the ~~Strategic Health Authority~~ for achieving the ~~SINGLE SEX TARGET OBJECTIVE~~. This item has been retired from the NHS Data Model and Dictionary.

The last live version of this item is available in the February 2014 release of the NHS Data Model and Dictionary.

Access to this version can be obtained by emailing [information.standards@hscic.gov.uk](mailto:information.standards@hscic.gov.uk) with "NHS Data Model and Dictionary - Archive Request" in the email subject line.

---

## **SINGLE SEX TARGET REVISED DATE (RETIRED)\_ renamed from SINGLE SEX TARGET REVISED DATE**

---

Change to Attribute: Changed Description, Name, status to Retired

- Changed Description
  - Changed Name from Data\_Dictionary.Attributes.S.Sig.SINGLE\_SEX\_TARGET\_REVISED\_DATE to Retired.Data\_Dictionary.Attributes.S.SINGLE\_SEX\_TARGET\_REVISED\_DATE
  - Retired SINGLE SEX TARGET REVISED DATE
- 

## **SPECIALIST HIV SKILLS AVAILABLE (RETIRED)\_ renamed from SPECIALIST HIV SKILLS AVAILABLE**

---

Change to Attribute: Changed Description, Name, status to Retired

~~The availability of a [CARE PROFESSIONAL](#) to other [CARE PROFESSIONALS](#) expressed in terms of availability within x hours/days where x is the maximum amount of time one might have to wait. This item has been retired from the NHS Data Model and Dictionary.~~

**The last live version of this item is available in the February 2014 release of the NHS Data Model and Dictionary.**

**Access to this version can be obtained by emailing [information.standards@hscic.gov.uk](mailto:information.standards@hscic.gov.uk) with "NHS Data Model and Dictionary - Archive Request" in the email subject line.**

---

## **SPECIALIST HIV SKILLS AVAILABLE (RETIRED)\_ renamed from SPECIALIST HIV SKILLS AVAILABLE**

---

Change to Attribute: Changed Description, Name, status to Retired

- Changed Description
  - Changed Name from Data\_Dictionary.Attributes.S.Spe.SPECIALIST\_HIV\_SKILLS\_AVAILABLE to Retired.Data\_Dictionary.Attributes.S.SPECIALIST\_HIV\_SKILLS\_AVAILABLE
  - Retired SPECIALIST HIV SKILLS AVAILABLE
- 

## **SPECIALIST REGISTRAR FLAG (RETIRED)\_ renamed from SPECIALIST REGISTRAR FLAG**

---

Change to Attribute: Changed Description, Name, status to Retired

~~Indicates that the [CARE PROFESSIONAL](#) who carries out a procedure is a specialist paediatric registrar. This item has been retired from the NHS Data Model and Dictionary.~~

**The last live version of this item is available in the February 2014 release of the NHS Data Model and Dictionary.**

**Access to this version can be obtained by emailing [information.standards@hscic.gov.uk](mailto:information.standards@hscic.gov.uk) with "NHS Data Model and Dictionary - Archive Request" in the email subject line.**

---

## **SPECIALIST REGISTRAR FLAG (RETIRED)\_ renamed from SPECIALIST REGISTRAR FLAG**

---

Change to Attribute: Changed Description, Name, status to Retired

- Changed Description
- Changed Name from Data\_Dictionary.Attributes.S.Spe.SPECIALIST\_REGISTRAR\_FLAG to Retired.Data\_Dictionary.Attributes.S.SPECIALIST\_REGISTRAR\_FLAG
- Retired SPECIALIST REGISTRAR FLAG

---

## **SUPERVISION REGISTER RISK (RETIRED)\_ renamed from SUPERVISION REGISTER RISK**

---

Change to Attribute: Changed Description, Name, status to Retired

~~A classification of the assessed risk for a [Supervision Register Episode](#). This item has been retired from the NHS Data Model and Dictionary.~~

~~*Classification:* The last live version of this item is available in the February 2014 release of the NHS Data Model and Dictionary.~~

- ~~a. Serious violence~~
- ~~b. Significant self-harm~~
- ~~c. Severe self-neglect~~
- ~~d. Serious violence and significant self-harm~~
- ~~e. Serious violence and severe self-neglect~~
- ~~f. Significant self-harm and severe self-neglect~~
- ~~g. Serious violence, significant self-harm and severe self-neglect~~

~~Access to this version can be obtained by emailing [information.standards@hscic.gov.uk](mailto:information.standards@hscic.gov.uk) with "NHS Data Model and Dictionary - Archive Request" in the email subject line.~~

---

## **SUPERVISION REGISTER RISK (RETIRED)\_ renamed from SUPERVISION REGISTER RISK**

---

Change to Attribute: Changed Description, Name, status to Retired

- Changed Description
- Changed Name from Data\_Dictionary.Attributes.S.Sup.SUPERVISION\_REGISTER\_RISK to Retired.Data\_Dictionary.Attributes.S.SUPERVISION\_REGISTER\_RISK
- Retired SUPERVISION REGISTER RISK

---

## **TARGET COVERAGE (RETIRED)\_ renamed from TARGET COVERAGE**

---

Change to Attribute: Changed Description, Name, status to Retired

~~This is recorded as part of the statement for a [HEALTH PROGRAMME](#) identifying the target level of coverage. This item has been retired from the NHS Data Model and Dictionary.~~

~~The last live version of this item is available in the February 2014 release of the NHS Data Model and Dictionary.~~

~~Access to this version can be obtained by emailing [information.standards@hscic.gov.uk](mailto:information.standards@hscic.gov.uk) with "NHS Data Model and Dictionary - Archive Request" in the email subject line.~~



## TARGET COVERAGE (RETIRED)\_ renamed from TARGET COVERAGE

---

Change to Attribute: Changed Description, Name, status to Retired

- Changed Description
  - Changed Name from Data\_Dictionary.Attributes.T.TARGET\_COVERAGE to Retired.Data\_Dictionary.Attributes.T.TARGET\_COVERAGE
  - Retired TARGET COVERAGE
- 

## WARD STAY TERMINATION REASON (RETIRED)\_\_ renamed from WARD STAY TERMINATION REASON

---

Change to Attribute: Changed Description, Name, status to Retired

~~The reason a [Ward Stay](#) was terminated.~~ This item has been retired from the NHS Data Model and Dictionary.

~~Classification:~~ The last live version of this item is available in the February 2014 release of the NHS Data Model and Dictionary.

- ~~a. Discharge~~
- ~~b. Transfer to another ward~~
- ~~c. Home leave or Leave of Absence~~
- ~~d. Absence without leave~~

Access to this version can be obtained by emailing [information.standards@hscic.gov.uk](mailto:information.standards@hscic.gov.uk) with "NHS Data Model and Dictionary - Archive Request" in the email subject line.

---

## WARD STAY TERMINATION REASON (RETIRED)\_\_ renamed from WARD STAY TERMINATION REASON

---

Change to Attribute: Changed Description, Name, status to Retired

- Changed Description
  - Changed Name from Data\_Dictionary.Attributes.W.Ward.WARD\_STAY\_TERMINATION\_REASON to Retired.Data\_Dictionary.Attributes.W.WARD\_STAY\_TERMINATION\_REASON
  - Retired WARD STAY TERMINATION REASON
- 

## PRIMARY CARE COMMUNICATION SENT DATE (RETIRED)\_ renamed from PRIMARY CARE COMMUNICATION SENT DATE

---

Change to Data Element: Changed Description, Name, linked Attribute, status to Retired

Format/length:	see <a href="#">DATE</a>
HES item:	
National Codes:	
Default Codes:	

This item has been retired from the NHS Data Model and Dictionary.

The last live version of this item is available in the February 2014 release of the NHS Data Model and Dictionary.

Access to this version can be obtained by emailing [information.standards@hscic.gov.uk](mailto:information.standards@hscic.gov.uk) with "NHS Data Model and Dictionary - Archive Request" in the email subject line.

---

**PRIMARY CARE COMMUNICATION SENT DATE (RETIRED)\_ renamed from PRIMARY CARE COMMUNICATION SENT DATE**

---

Change to Data Element: Changed Description, Name, linked Attribute, status to Retired

**~~PRIMARY CARE COMMUNICATION SENT DATE~~**

**Attribute:**

[PRIMARY CARE COMMUNICATION SENT DATE](#)

---

**PRIMARY CARE COMMUNICATION SENT DATE (RETIRED)\_ renamed from PRIMARY CARE COMMUNICATION SENT DATE**

---

Change to Data Element: Changed Description, Name, linked Attribute, status to Retired

- Changed Description
  - Changed 

Name	from
Data_Dictionary.Data_Field_Notes.P.Pri.PRIMARY_CARE_COMMUNICATION_SENT_DATE	to
Retired.Data_Dictionary.Data_Field_Notes.P.PRIMARY_CARE_COMMUNICATION_SENT_DATE	
  - null
  - Retired PRIMARY CARE COMMUNICATION SENT DATE
- 

For enquiries about this Change Request, please email [information.standards@hscic.gov.uk](mailto:information.standards@hscic.gov.uk)