

Health and Social Care Information Centre

NHS Data Model and Dictionary Service

Type: Data Dictionary Change Notice
Reference: 1405
Version No: 1.0
Subject: Overseas Visitors
Effective Date: Immediate
Reason for Change: Change to information
Publication Date: 17 December 2013

Background:

NHS England has published new information relating to European cross-border healthcare, see [European cross-border healthcare](#).

Following the publication of this information, the NHS Data Model and Dictionary Service have reviewed the items relating to overseas visitors in the NHS Data Model and Dictionary. A number of these items are out of date and/or are not used in any data set within the NHS Data Model and Dictionary. A consultation has been carried out to establish whether any of the items are still being used locally and should therefore be retained in the NHS Data Model and Dictionary for reference.

Following the consultation, this Data Dictionary Change Notice (DDCN) updates the NHS Data Model and Dictionary as follows:

- Retires the Attributes:
 - COUNTRY RECIPROCAL STATUS
 - EUROPEAN ECONOMIC AREA INDICATOR
 - OVERSEAS VISITOR QUOTA NUMBER
 - OVERSEAS VISITOR REFERRAL PRODUCED
 - OVERSEAS VISITOR TREATMENT PREARRANGED
- Updates definitions to reflect current guidance
- Updates website links.

To view a demonstration on "How to Read an NHS Data Model and Dictionary Change Request", visit the NHS Data Model and Dictionary help pages at: http://www.datadictionary.nhs.uk/Flash_Files/changerequest.htm.

Note: if the web page does not open, please copy the link and paste into the web browser.

Summary of changes:

Diagrams

[DIAGNOSTIC IMAGING DIAGRAM](#)

Changed Diagram

[REFERRAL REQUEST DIAGRAM](#)

Changed Diagram

Supporting Information

[DA1](#)

Changed Description

[DEPARTMENT FOR WORK AND PENSIONS OVERSEAS HEALTHCARE TEAM](#)

Changed Description

[EU DIRECTIVE](#)

New Supporting Information

[EUROPEAN ECONOMIC AREA](#)

Changed Description

[EUROPEAN HEALTH INSURANCE CARD](#)

Changed Description

[EXEMPT FROM CHARGE SERVICE](#)

Changed Description

[NATIONAL CONTACT POINT](#)

New Supporting Information

NATIONAL HEALTH SERVICE (CHARGES TO OVERSEAS VISITORS) REGULATIONS 1989 (AS AMENDED BY STATUTORY INSTRUMENT) (RETIRED) renamed from NATIONAL HEALTH SERVICE (CHARGES TO OVERSEAS VISITORS) REGULATIONS 1989 (AS AMENDED BY STATUTORY INSTRUMENT)	Changed Name, status to Retired, Description
NATIONAL HEALTH SERVICE (OVERSEAS VISITORS HOSPITAL CHARGING REGULATIONS)	New Supporting Information
ORGANISATIONS INTRODUCTION	Changed Description
ORGANISATIONS MENU	Changed Description
OVERSEAS VISITOR	Changed Description
OVERSEAS VISITOR CHARGEABLE CATEGORY	Changed Description
OVERSEAS VISITOR TREATMENT PORTAL	Changed Description
PROVISIONAL REPLACEMENT CERTIFICATE	Changed Description
S2	Changed Description

Class Definitions

COUNTRY	Changed Attributes
DIAGNOSTIC TEST REQUEST	Changed Attributes
OVERSEAS VISITOR STATUS	Changed Attributes, Description

Attribute Definitions

ADMINISTRATIVE CATEGORY CODE	Changed Description
COUNTRY RECIPROCAL STATUS (RETIRED) renamed from COUNTRY RECIPROCAL STATUS	Changed Name, status to Retired, Description
EUROPEAN ECONOMIC AREA INDICATOR (RETIRED) renamed from EUROPEAN ECONOMIC AREA INDICATOR	Changed Name, status to Retired, Description
OVERSEAS VISITOR EXEMPT CATEGORY	Changed Description
OVERSEAS VISITOR QUOTA NUMBER (RETIRED) renamed from OVERSEAS VISITOR QUOTA NUMBER	Changed Name, status to Retired, Description
OVERSEAS VISITOR REFERRAL PRODUCED (RETIRED) renamed from OVERSEAS VISITOR REFERRAL PRODUCED	Changed Name, status to Retired, Description
OVERSEAS VISITOR TREATMENT PREARRANGED (RETIRED) renamed from OVERSEAS VISITOR TREATMENT PREARRANGED	Changed Name, status to Retired, Description
OVERSEAS VISITOR UK ARRIVAL DATE	Changed Description
REQUEST CATEGORY (RETIRED) renamed from REQUEST CATEGORY	Changed Name, status to Retired, Description

Data Elements

ADMINISTRATIVE CATEGORY CODE	Changed Description
DEFERRED ADMISSIONS (ORDINARY)	Changed Description
OVERSEAS VISITOR STATUS CLASSIFICATION	Changed Description
OVERSEAS VISITOR STATUS CLASSIFICATION AT CDS ACTIVITY DATE	Changed Description
PATIENTS SUSPENDED (ORDINARY)	Changed Description
PATIENTS WAITING FOR ADMISSION	Changed Description

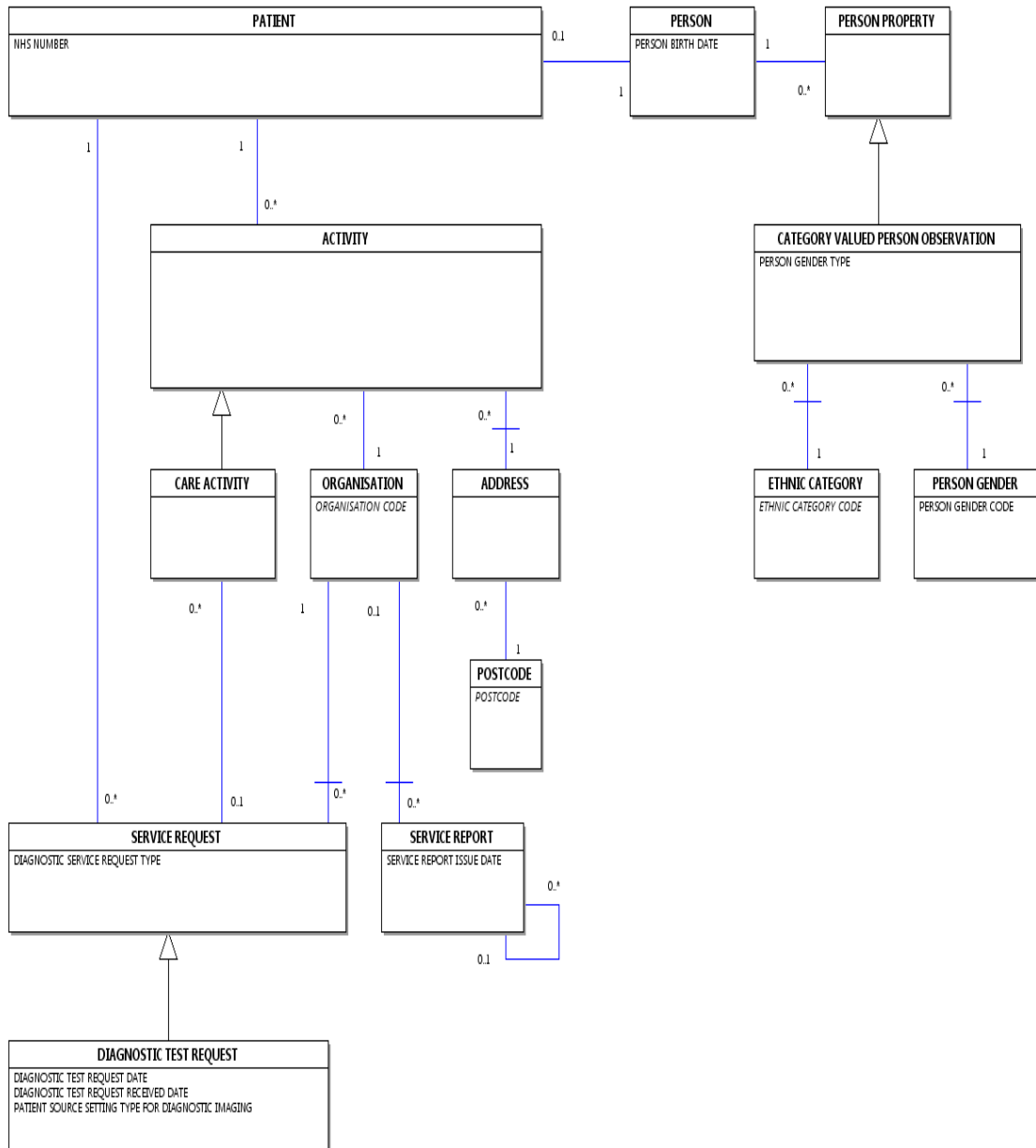
Date: 17 December 2013

Sponsor: Ken Lunn, Head of Information Standards Delivery, Health and Social Care Information Centre

Note: New text is shown with a blue background. Deleted text is crossed out. Retired text is shown in grey. Within the Diagrams deleted classes and relationships are red, changed items are blue and new items are green.

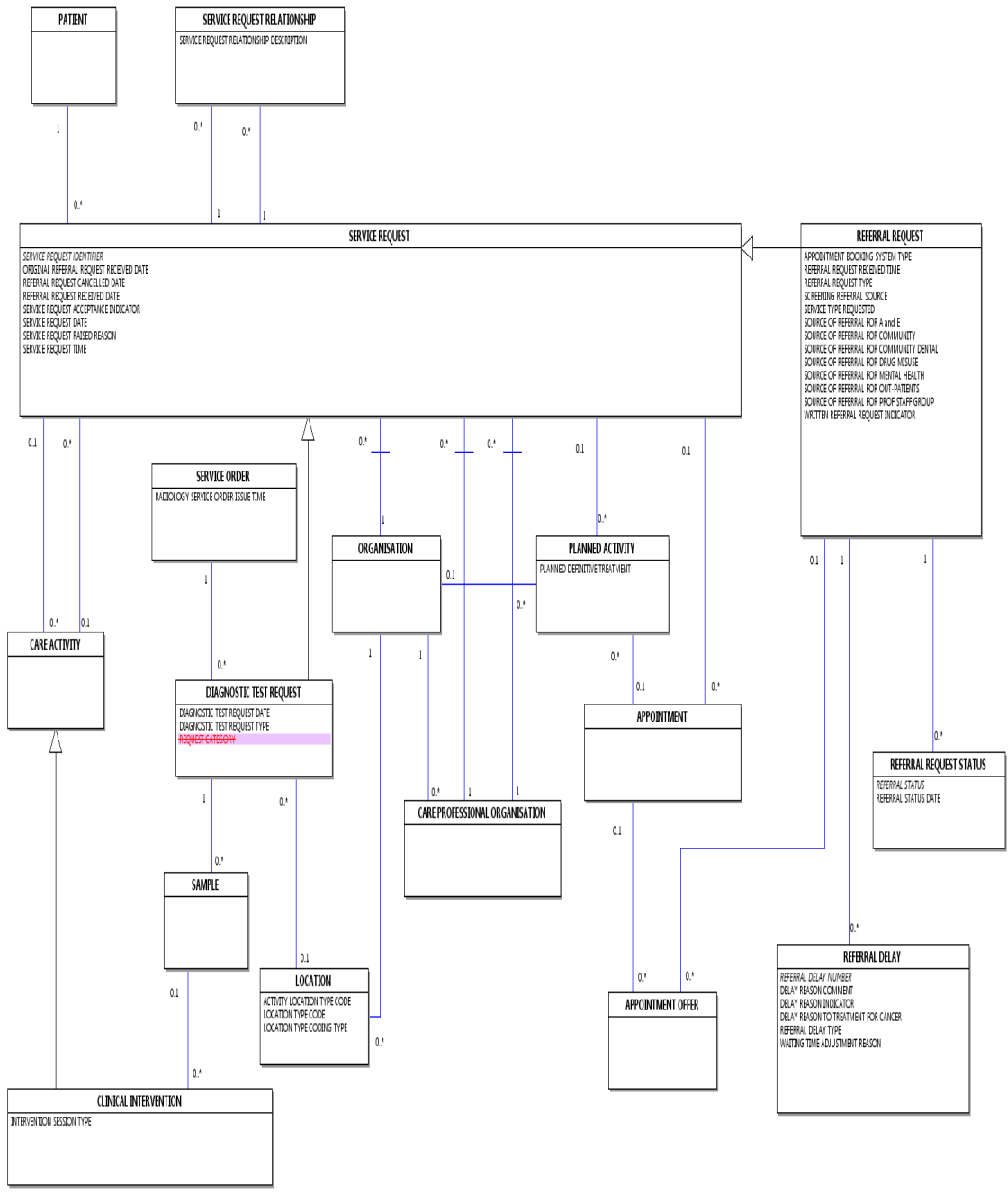
DIAGNOSTIC IMAGING DIAGRAM

Change to Diagram: Changed Diagram



REFERRAL REQUEST DIAGRAM

Change to Diagram: Changed Diagram



DA1

Change to Supporting Information: Changed Description

The [DA1](#) form is presented to the social security institution in the state of residence or stay to gain entitlement to healthcare benefits.

The [DA1](#) entitles people to healthcare under insurance against Accidents at Work and Occupational Diseases (AWOD), when they live or stay in a European Union State, other than the state where they are insured.

~~Note: prior to 1 May 2010, the [DA1](#) was known as the [E123](#).~~ Note: prior to 1 May 2010, the [DA1](#) was known as the [E123](#).

For further information on the [DA1](#) see the: [Department for Work and Pensions website: Getting Industrial Injuries Disablement Benefit when you are living in another EEA country.](#)

- [Department for Work and Pensions website: Getting Industrial Injuries Disablement Benefit when you are living in another EEA country;](#)
- [International Pension Centre \(IPC\);](#)

DEPARTMENT FOR WORK AND PENSIONS OVERSEAS HEALTHCARE TEAM

Change to Supporting Information: Changed Description

The [Department for Work and Pensions Overseas Healthcare Team \(DWP OHT\)](#) is a team within the [Department for Work and Pensions](#), which acts on behalf of the [Department of Health](#).

~~One of the [Department for Work and Pensions Overseas Healthcare Team's](#) duties is to secure reimbursement for the cost of healthcare of [Overseas Visitors](#) from the [European Economic Area](#) and Switzerland under European Union regulations, for the [Department of Health](#) and ultimately the NHS.~~ One of the [Department for Work and Pensions Overseas Healthcare Team's](#) duties is to secure reimbursement for the cost of healthcare of [Overseas Visitors](#) from the [European Economic Area](#) and Switzerland under European Union regulations for the [Department of Health](#).

From 12 October 2009, the [Department for Work and Pensions Overseas Healthcare Team](#) are responsible for collecting information on [European Economic Area](#) residents and those from Switzerland who require NHS hospital treatment. This is done via the [Overseas Visitor Treatment Portal \(OVT Portal\)](#) which every [NHS Trust](#) can access.

~~Note: Prior to 12 October 2009, the information was collected on [Income Generation Audit \(IGA\) forms](#) and sent to Leeds [Primary Care Trust](#).~~ For contact details for the [Department for Work and Pensions Overseas Healthcare Team](#), see the:

For contact details for the [Department for Work and Pensions Overseas Healthcare Team](#), see the [Department for Work and Pensions website](#):

- [Department for Work and Pensions website](#)
- [Department of Health part of the gov.uk website.](#)

EU DIRECTIVE

Change to Supporting Information: New Supporting Information

The [EU Directive](#) grants a fundamental right to healthcare [SERVICES](#) in the United Kingdom across the [European Economic Area](#) for all [European Economic Area](#) citizens, as long as the treatment is medically necessary and would be made available under the NHS.

For further information on the [EU Directive](#), see the [NHS Choices website](#) at:

- [What to do before going abroad for medical treatment](#)

- [EU Directive on cross-border healthcare](#).

EUROPEAN ECONOMIC AREA

Change to Supporting Information: Changed Description

The [European Economic Area \(EEA\)](#) was established on 1 January 1994 and includes countries which are not part of the European Union.

On 1 April 2013, [NHS England](#) became responsible for administering the application process for [PATIENTS](#) seeking funding for healthcare in other European countries; see the [NHS England website](#).

For a list of [European Economic Area](#) countries relating to [Department of Health](#) and NHS [Overseas Visitors](#) policy, see the:

- [Department of Health](#) website at: [European Economic Area \(EEA\) countries](#)
- ~~NHS Choices website at: [Travelling in the European Economic Area \(EEA\)](#):~~
- [Department for Work and Pensions](#) website at: [European Economic Area \(EEA\) countries](#)
- [NHS Choices](#) website at: [Travelling in the European Economic Area \(EEA\) and Switzerland](#).

EUROPEAN HEALTH INSURANCE CARD

Change to Supporting Information: Changed Description

The [European Health Insurance Card \(EHIC\)](#) was introduced in 2005 and allows people to access state-provided healthcare (for clinically necessary treatment) in all [European Economic Area \(EEA\)](#) countries and Switzerland at a reduced cost or free of charge.

For further information on the [European Health Insurance Card](#), see the:

- [Department of Health website: The European Health Insurance Card \(EHIC\)](#)
- [NHS England](#) website at: [European cross-border healthcare: Information for commissioners](#)
- [NHS Choices](#) website: [European Health Insurance Card](#).

~~Note: the [European Health Insurance Card](#) and the [Provisional Replacement Certificate](#) are for clinically necessary treatment and the [S2](#) is for planned treatment. Note: the [European Health Insurance Card](#) and the [Provisional Replacement Certificate](#) are for medical treatment that is or becomes clinically necessary whilst in another [European Economic Area \(EEA\)](#) country and the [S2](#) is for planned treatment.~~

EXEMPT FROM CHARGE SERVICE

Change to Supporting Information: Changed Description

[Exempt From Charge Service](#) is a [SERVICE](#) for which no charge may be made to a [PERSON](#).

~~The [National Health Service \(Charges to Overseas Visitors\) Regulations 1989 \(as amended by Statutory Instrument\)](#) states that a [PERSON](#) has to pay for NHS hospital healthcare unless the [SERVICE](#) they are receiving~~

is an [Exempt From Charge Service](#). The [National Health Service \(Overseas Visitors Hospital Charging Regulations\)](#) states that a [PERSON](#) has to pay for NHS hospital healthcare unless the [SERVICE](#) they are receiving is an [Exempt From Charge Service](#).

For further information on [Exempt from Charge Services](#), see the [Department of Health website](#). For further information on [Exempt from Charge Services](#), see the [Department of Health](#) part of the gov.uk website at: [Guidance on overseas visitors hospital charging regulations](#).

NATIONAL CONTACT POINT

Change to Supporting Information: New Supporting Information

The [National Contact Point \(NCP\)](#) is an [ORGANISATION](#) run by [NHS England](#).

The primary role of the [National Contact Point](#) is the provision of information to prospective European [PATIENTS](#) travelling to England for treatment ('incoming [PATIENTS](#)') and English residents seeking funding for healthcare in the [European Economic Area](#) ('outgoing [PATIENTS](#)').

For further information on the role of the [National Contact Point](#), see the [NHS England website](#).

This supporting information is also known by these names:

Context	Alias
shortname	NCP

NATIONAL HEALTH SERVICE (CHARGES TO OVERSEAS VISITORS) REGULATIONS 1989 (AS AMENDED BY STATUTORY INSTRUMENT) (RETIRED)_ renamed from NATIONAL HEALTH SERVICE (CHARGES TO OVERSEAS VISITORS) REGULATIONS 1989 (AS AMENDED BY STATUTORY INSTRUMENT)

Change to Supporting Information: Changed Name, status to Retired, Description

Access to NHS hospital healthcare is based on [Ordinary Residence](#) in the United Kingdom. This item has been retired from the NHS Data Model and Dictionary.

Anyone who is not [Ordinarily Resident](#), i.e. an [Overseas Visitor](#), is subject to the [National Health Service \(Charges to Overseas Visitors\) Regulations 1989 \(as amended by Statutory Instrument\)](#). The last live version of this item is available in the November 2013 release of the NHS Data Model and Dictionary.

The regulations concerning entitlement to NHS hospital treatment are the [National Health Service \(Charges to Overseas Visitors\) Regulations 1989 \(as amended by Statutory Instrument\)](#), see the [Department of Health website](#). Access to this version can be obtained by emailing information.standards@hscic.gov.uk with "NHS Data Model and Dictionary - Archive Request" in the email subject line.

The [National Health Service \(Charges to Overseas Visitors\) Regulations 1989 \(as amended by Statutory Instrument\)](#) places a responsibility on [NHS Trusts](#) to establish whether a [PATIENT](#) is:

- [Ordinarily Resident](#);
- exempt from charges by virtue of the Charging Regulations; and,
- if they are not exempt, make and recover a charge from them to cover the full cost of their treatment.

The [National Health Service \(Charges to Overseas Visitors\) Regulations 1989 \(as amended by Statutory Instrument\)](#) also state that certain treatments are [Exempt from Charge Services](#) in their own right, irrespective of the [PATIENT](#)'s status. These include:

- treatment given in [Accident and Emergency Departments](#);
- family planning services;
- treatment for certain specified diseases where treatment is necessary to protect the wider public health;
- treatment for all sexually transmitted diseases, including Human Immunodeficiency Virus (HIV) treatment;
- treatment given to people detained, or liable to be detained, or subject to a community treatment order under the provisions of the Mental Health Act 1983 or other legislation authorising detention in a [Hospital](#) because of a mental disorder;
- treatment which is imposed by, or included in, an order of the Court
- and [SERVICES](#) provided other than in a [Hospital](#) or by a [PERSON](#) who is employed to work for, or on behalf of, a [Hospital](#).

For further information on the [National Health Service \(Charges to Overseas Visitors\) Regulations 1989 \(as amended by Statutory Instrument\)](#), see the [Department of Health website](#).

NATIONAL HEALTH SERVICE (CHARGES TO OVERSEAS VISITORS) REGULATIONS 1989 (AS AMENDED BY STATUTORY INSTRUMENT) (RETIRED)_ renamed from NATIONAL HEALTH SERVICE (CHARGES TO OVERSEAS VISITORS) REGULATIONS 1989 (AS AMENDED BY STATUTORY INSTRUMENT)

Change to Supporting Information: Changed Name, status to Retired, Description

- Changed Name from Data_Dictionary.NHS_Business_Definitions.N.National_Health_Service_(Charges_to_Overseas_Visitors)_Regulations_1989_(as_amended_by_Statutory_Instrument) to Retired.Data_Dictionary.NHS_Business_Definitions.N.National_Health_Service_(Charges_to_Overseas_Visitors)_Regulations_1989_(as_amended_by_Statutory_Instrument)
- Retired National Health Service (Charges to Overseas Visitors) Regulations 1989 (as amended by Statutory Instrument)
- Changed Description

NATIONAL HEALTH SERVICE (OVERSEAS VISITORS HOSPITAL CHARGING REGULATIONS)

Change to Supporting Information: New Supporting Information

Access to NHS hospital healthcare is based on [Ordinary Residence](#) in the United Kingdom.

A [PERSON](#) who is not [Ordinarily Resident](#) in the UK falls within the definition of an [Overseas Visitor](#) and may incur a charge for treatment.

Guidance relating to the [National Health Service \(Overseas Visitors Hospital Charging Regulations\)](#), can be found on the [Department of Health part of the gov.uk website](#).

ORGANISATIONS INTRODUCTION

Change to Supporting Information: Changed Description

[ORGANISATIONS](#) such as the [Health and Social Care Information Centre](#), [General Medical Council](#) etc which are included in the NHS Data Model and Dictionary.

Referenced Organisations:

- [American Joint Committee on Cancer](#)
- [British Association for Paediatric Nephrology](#)
- [British Psychological Society](#)
- [British Renal Society](#)
- [British Transplantation Society](#)
- [Care Quality Commission](#)
- [Community Health Partnership \(Scotland\)](#)
- [Department for Education](#)
- [Department for Work and Pensions](#)
- [Department for Work and Pensions Overseas Healthcare Team](#)
- [Department of Health](#)
- [European Renal Association \(European Dialysis and Transplant Association\)](#)
- [Faculty of General Dental Practice \(UK\)](#)
- [GSI](#)
- [Health and Social Care Information Centre](#)
- [Health and Wellbeing Board](#)
- [Health Education England](#)
- [Health Research Authority](#)
- [Healthwatch England](#)
- [Information Standards Board for Health and Social Care](#)
- [International Federation of Gynecology and Obstetrics](#)
- [International Health Terminology Standards Development Organisation](#)
- [International Society of Paediatric Oncology](#)
- [Local Health Board \(Wales\)](#)
- [Local Healthwatch](#)
- [Monitor](#)
- [National Cancer Intelligence Network](#)
- [National Casemix Office](#)
- [National Commissioning Group](#)
- [National Institute for Health and Clinical Excellence](#)
- [National Joint Registry](#)
- [National Kidney Federation](#)
- [National Specialised Commissioning Group](#)
- [NHS Business Services Authority](#)
- [NHS England](#)
- [NHS Dental Services](#)
- [NHS Prescription Services](#)
- [NHS Trust Development Authority](#)
- [NHS Wales Informatics Service](#)
- [Northern Ireland Local Commissioning Group](#)
- [Office for National Statistics](#)
- [Ofsted](#)
- [Organisation Data Service](#)
- [Public Health England](#)
- [Royal College of General Practitioners](#)
- [Royal Pharmaceutical Society](#)
- [The Renal Association](#)
- [The Royal Marsden](#)
- [UK National Screening Committee](#)
- [UK Renal Registry](#)
- [UK Terminology Centre](#)
- [Union for International Cancer Control](#)
- [United Kingdom Association of Cancer Registries](#)
- [World Health Organisation](#)

Regulatory Bodies:

- [General Chiropractic Council](#)
- [General Dental Council](#)
- [General Medical Council](#)
- [General Optical Council](#)
- [General Osteopathic Council](#)
- [General Pharmaceutical Council](#)
- [Health and Care Professions Council](#)
- [Nursing and Midwifery Council](#)
- [Ophthalmic Qualifications Committee](#)

- [American Joint Committee on Cancer](#)
- [British Association for Paediatric Nephrology](#)
- [British Psychological Society](#)
- [British Renal Society](#)
- [British Transplantation Society](#)
- [Care Quality Commission](#)
- [Community Health Partnership \(Scotland\)](#)
- [Department for Education](#)
- [Department for Work and Pensions](#)
- [Department for Work and Pensions Overseas Healthcare Team](#)
- [Department of Health](#)
- [European Renal Association \(European Dialysis and Transplant Association\)](#)
- [Faculty of General Dental Practice \(UK\)](#)
- [GS1](#)
- [Health and Social Care Information Centre](#)
- [Health and Wellbeing Board](#)
- [Health Education England](#)
- [Health Research Authority](#)
- [Healthwatch England](#)
- [Information Standards Board for Health and Social Care](#)
- [International Federation of Gynecology and Obstetrics](#)
- [International Health Terminology Standards Development Organisation](#)
- [International Society of Paediatric Oncology](#)
- [Local Health Board \(Wales\)](#)
- [Local Healthwatch](#)
- [Monitor](#)
- [National Cancer Intelligence Network](#)
- [National Casemix Office](#)
- [National Commissioning Group](#)
- [National Contact Point](#)
- [National Institute for Health and Clinical Excellence](#)
- [National Joint Registry](#)
- [National Kidney Federation](#)
- [National Specialised Commissioning Group](#)
- [NHS Business Services Authority](#)
- [NHS England](#)
- [NHS Dental Services](#)
- [NHS Prescription Services](#)
- [NHS Trust Development Authority](#)
- [NHS Wales Informatics Service](#)
- [Northern Ireland Local Commissioning Group](#)
- [Office for National Statistics](#)
- [Ofsted](#)
- [Organisation Data Service](#)
- [Public Health England](#)
- [Royal College of General Practitioners](#)
- [Royal Pharmaceutical Society](#)
- [The Renal Association](#)
- [The Royal Marsden](#)
- [UK National Screening Committee](#)
- [UK Renal Registry](#)
- [UK Terminology Centre](#)
- [Union for International Cancer Control](#)
- [United Kingdom Association of Cancer Registries](#)
- [World Health Organisation](#)
- [General Chiropractic Council](#)
- [General Dental Council](#)
- [General Medical Council](#)
- [General Optical Council](#)
- [General Osteopathic Council](#)
- [General Pharmaceutical Council](#)
- [Health and Care Professions Council](#)
- [Nursing and Midwifery Council](#)
- [Ophthalmic Qualifications Committee](#)

ORGANISATIONS MENU

Change to Supporting Information: Changed Description

- **Referenced Organisations:**

- [American Joint Committee on Cancer](#)
- [British Association for Paediatric Nephrology](#)
- [British Psychological Society](#)
- [British Renal Society](#)
- [British Transplantation Society](#)
- [Care Quality Commission](#)
- [Community Health Partnership \(Scotland\)](#)
- [Department for Education](#)
- [Department for Work and Pensions](#)
- [Department for Work and Pensions Overseas Healthcare Team](#)
- [Department of Health](#)
- [European Renal Association \(European Dialysis and Transplant Association\)](#)
- [Faculty of General Dental Practice \(UK\)](#)
- [GSI](#)
- [Health and Social Care Information Centre](#)
- [Health and Wellbeing Board](#)
- [Health Education England](#)
- [Health Research Authority](#)
- [Healthwatch England](#)
- [Information Standards Board for Health and Social Care](#)
- [International Federation of Gynecology and Obstetrics](#)
- [International Health Terminology Standards Development Organisation](#)
- [International Society of Paediatric Oncology](#)
- [Local Health Board \(Wales\)](#)
- [Local Healthwatch](#)
- [Monitor](#)
- [National Cancer Intelligence Network](#)
- [National Casemix Office](#)
- [National Commissioning Group](#)
- [National Institute for Health and Clinical Excellence](#)
- [National Joint Registry](#)
- [National Kidney Federation](#)
- [National Specialised Commissioning Group](#)
- [NHS Business Services Authority](#)
- [NHS England](#)
- [NHS Dental Services](#)
- [NHS Prescription Services](#)
- [NHS Trust Development Authority](#)
- [NHS Wales Informatics Service](#)
- [Northern Ireland Local Commissioning Group](#)
- [Office for National Statistics](#)
- [Ofsted](#)
- [Organisation Data Service](#)
- [Public Health England](#)
- [Royal College of General Practitioners](#)
- [Royal Pharmaceutical Society](#)
- [The Renal Association](#)
- [The Royal Marsden](#)
- [UK National Screening Committee](#)
- [UK Renal Registry](#)
- [UK Terminology Centre](#)
- [Union for International Cancer Control](#)
- [United Kingdom Association of Cancer Registries](#)
- [World Health Organisation](#)
- **Referenced Organisations:**
 - [American Joint Committee on Cancer](#)
 - [British Association for Paediatric Nephrology](#)

- [British Psychological Society](#)
- [British Renal Society](#)
- [British Transplantation Society](#)
- [Care Quality Commission](#)
- [Community Health Partnership \(Scotland\)](#)
- [Department for Education](#)
- [Department for Work and Pensions](#)
- [Department for Work and Pensions Overseas Healthcare Team](#)
- [Department of Health](#)
- [European Renal Association \(European Dialysis and Transplant Association\)](#)
- [Faculty of General Dental Practice \(UK\)](#)
- [GS1](#)
- [Health and Social Care Information Centre](#)
- [Health and Wellbeing Board](#)
- [Health Education England](#)
- [Health Research Authority](#)
- [Healthwatch England](#)
- [Information Standards Board for Health and Social Care](#)
- [International Federation of Gynecology and Obstetrics](#)
- [International Health Terminology Standards Development Organisation](#)
- [International Society of Paediatric Oncology](#)
- [Local Health Board \(Wales\)](#)
- [Local Healthwatch](#)
- [Monitor](#)
- [National Cancer Intelligence Network](#)
- [National Casemix Office](#)
- [National Contact Point](#)
- [National Commissioning Group](#)
- [National Institute for Health and Clinical Excellence](#)
- [National Joint Registry](#)
- [National Kidney Federation](#)
- [National Specialised Commissioning Group](#)
- [NHS Business Services Authority](#)
- [NHS England](#)
- [NHS Dental Services](#)
- [NHS Prescription Services](#)
- [NHS Trust Development Authority](#)
- [NHS Wales Informatics Service](#)
- [Northern Ireland Local Commissioning Group](#)
- [Office for National Statistics](#)
- [Ofsted](#)
- [Organisation Data Service](#)
- [Public Health England](#)
- [Royal College of General Practitioners](#)
- [Royal Pharmaceutical Society](#)
- [The Renal Association](#)
- [The Royal Marsden](#)
- [UK National Screening Committee](#)
- [UK Renal Registry](#)
- [UK Terminology Centre](#)
- [Union for International Cancer Control](#)
- [United Kingdom Association of Cancer Registries](#)
- [World Health Organisation](#)

- **Regulatory Bodies:**

- [General Chiropractic Council](#)

- [General Dental Council](#)
- [General Medical Council](#)
- [General Optical Council](#)
- [General Osteopathic Council](#)
- [General Pharmaceutical Council](#)
- [Health and Care Professions Council](#)
- [Nursing and Midwifery Council](#)
- [Ophthalmic Qualifications Committee](#)

OVERSEAS VISITOR

Change to Supporting Information: Changed Description

An [Overseas Visitor](#) is a [PERSON](#) who is not [Ordinarily Resident](#) in the United Kingdom.

~~For further information on [Overseas Visitors](#), see the [Department of Health website](#).~~ For further information on [Overseas Visitors](#), see the:

- [Department of Health part of the gov.uk website](#)
- [NHS Choices website](#).

OVERSEAS VISITOR CHARGEABLE CATEGORY

Change to Supporting Information: Changed Description

[Overseas Visitor Chargeable Category](#) is an [OVERSEAS VISITOR STATUS](#).

~~An [Overseas Visitor Chargeable Category](#) includes [Overseas Visitors](#) who are not exempt from charges by virtue of the [National Health Service \(Charges to Overseas Visitors\) Regulations 1989 \(as amended by Statutory Instrument\)](#).~~ An [Overseas Visitor Chargeable Category](#) includes [Overseas Visitors](#) who are not exempt from charges by virtue of the [National Health Service \(Overseas Visitors Hospital Charging Regulations\)](#). The [PERSON](#) has to pay for NHS hospital healthcare unless the [SERVICE](#) they are receiving is an [Exempt From Charge Service](#).

~~For further information on [Overseas Visitor Chargeable Categories](#), see the [Department of Health website](#).~~ For further information on [Overseas Visitor Chargeable Categories](#), see the [Department of Health part of the gov.uk website](#).

OVERSEAS VISITOR TREATMENT PORTAL

Change to Supporting Information: Changed Description

The [Overseas Visitor Treatment Portal \(OVT Portal\)](#) is used to report treatments of [Overseas Visitors](#) (including planned treatment) from the [European Economic Area \(EEA\)](#) and Switzerland.

Note: There is no requirement to report treatments for [Overseas Visitors](#) from outside the [European Economic Area](#) and Switzerland via the [Overseas Visitor Treatment Portal](#).

For further information on the [Overseas Visitor Treatment Portal](#):

- ~~see the [Department of Health website: Overseas visitors](#)~~

- see the [Department of Health](#) part of the gov.uk website at: [Tutorial guidance on the NHS overseas visitor web portal](#);
- see <https://nww.ovt.dh.nhs.uk/> to access the [Overseas Visitor Treatment Portal](#);
- email: OHT.Overseasvisitorsteam@dwp.gsi.gov.uk;
- telephone: 0191 218 1999.

PROVISIONAL REPLACEMENT CERTIFICATE

Change to Supporting Information: Changed Description

A [Provisional Replacement Certificate \(PRC\)](#) provides the same access to free healthcare as a [European Health Insurance Card \(EHIC\)](#).

[Overseas Visitors](#) receiving clinically necessary treatment, who fail to provide a [European Health Insurance Card](#), have to obtain a [Provisional Replacement Certificate](#) from the appropriate liaison body in the competent member state country.

~~For further information and a list of providers of [Provisional Replacement Certificates](#), see the [Department of Health website: Provisional Replacement Certificates](#).~~ Note: if a [European Health Insurance Card \(EHIC\)](#) is lost or stolen while the [PERSON](#) is abroad, they will apply for a [Provisional Replacement Certificate](#). The [Provisional Replacement Certificate](#) provides the same cover as the [European Health Insurance Card](#) until the [PERSON](#) returns home.

For further information on [Provisional Replacement Certificates](#), see the [NHS Choices website](#).

S2

Change to Supporting Information: Changed Description

The [S2](#) form entitles people to planned treatment in [European Economic Area \(EEA\)](#) countries and Switzerland. Healthcare will be provided under the same conditions of care and payment as residents of that country.

Note: prior to 1 May 2010, the [S2](#) was known as the [E112](#).

~~For further information on the [S2](#), see the:~~ For further information on the [S2](#), see the [NHS Choices website](#) at:

- [Department of Health website: Overseas treatment for NHS Patients](#)
- [NHS Choices website: Using E112](#)
- [NHS Choices website: Planned treatment abroad](#).
- [What is the S2 route?](#)
- [What to do before going abroad for medical treatment.](#)

Note: the [S2](#) is for planned treatment and the [European Health Insurance Card](#) and [Provisional Replacement Certificate](#) are for clinically necessary treatment.

COUNTRY

Change to Class: Changed Attributes

Attributes of this Class are:

K COUNTRY CODE
COUNTRY NAME
COUNTRY RECIPROCAL STATUS
EUROPEAN ECONOMIC AREA INDICATOR

DIAGNOSTIC TEST REQUEST

Change to Class: Changed Attributes

Attributes of this Class are:

DIAGNOSTIC TEST REQUEST DATE
DIAGNOSTIC TEST REQUEST RECEIVED DATE
DIAGNOSTIC TEST REQUEST TYPE
PATHOLOGY SPECIALTY
PATIENT SOURCE SETTING TYPE FOR DIAGNOSTIC IMAGING
RADIOLOGY APPOINTMENT REQUIRED
RADIOLOGY INVESTIGATION PREV INDICATOR
RADIOLOGY PROCEDURE EARLIEST DATE
RADIOLOGY PROCEDURE LATEST DATE
RADIOLOGY PROCEDURE PRIORITY
RADIOLOGY PROCEDURE REQUESTED DATE
RADIOLOGY PROCEDURE REQUESTED TIME
REQUEST CATEGORY
REQUIRED OUTSIDE NORMAL WORKING HOURS
SMEAR REFERRAL NATURE
SMEAR SOURCE TYPE

OVERSEAS VISITOR STATUS

Change to Class: Changed Attributes, Description

The status of a [PATIENT](#) who is an [Overseas Visitor](#).

~~Note: [PATIENTS](#) charged under the [National Health Service \(Charges to Overseas Visitors\) Regulations 1989 \(as amended by Statutory Instrument\)](#) are NHS charged [PATIENTS](#) and should not be confused with private [PATIENTS](#). Unlike private [PATIENTS](#), NHS Charged [PATIENTS](#) are liable to pay for their healthcare even where an undertaking to pay has not been obtained. Alternatively, the [PATIENT](#) can opt to be treated as a private [PATIENT](#).~~Notes:

~~[Health Care Providers](#) should recover the full cost of the healthcare given to a [PATIENT](#) who is an [Overseas Visitor](#). To calculate the cost, trusts follow [Non Contract Activity](#) guidance, which can be found on the [NHS England website](#).~~

- [PATIENTS](#) charged under the [National Health Service \(Overseas Visitors Hospital Charging Regulations\)](#) are NHS charged [PATIENTS](#) and should not be confused with private [PATIENTS](#). Unlike private [PATIENTS](#), NHS Charged [PATIENTS](#) are liable to pay for their healthcare even where an undertaking to pay has not been obtained. Alternatively, the [PATIENT](#) can opt to be treated as a private [PATIENT](#).
- Healthcare for [PATIENTS](#) who are [Overseas Visitors](#) should be reported to the [Department for Work and Pensions Overseas Healthcare Team](#) via the [Overseas Visitor Treatment Portal](#). This enables the [Department of Health](#) and ultimately the NHS to be reimbursed for the cost of treatments of [Overseas Visitors](#) from the [European Economic Area \(EEA\)](#) and Switzerland under European Union regulations.

- The [OVERSEAS VISITOR STATUS](#) may change while the [PATIENT](#) is being treated. All such changes should be recorded so that charges for treatment can be revised accordingly.
- [Health Care Providers](#) should recover the full cost of the healthcare given to a [PATIENT](#) who is an [Overseas Visitor](#). To calculate the cost, trusts follow [Non-Contract Activity](#) guidance, which can be found on the [NHS England website](#).

OVERSEAS VISITOR STATUS

Change to Class: Changed Attributes, Description

Attributes of this Class are:

K OVERSEAS VISITOR STATUS START DATE
 OVERSEAS VISITOR EXEMPT CATEGORY
~~OVERSEAS VISITOR QUOTA NUMBER~~
~~OVERSEAS VISITOR REFERRAL PRODUCED~~
 OVERSEAS VISITOR STATUS CLASSIFICATION
 OVERSEAS VISITOR STATUS END DATE
~~OVERSEAS VISITOR TREATMENT PREARRANGED~~

ADMINISTRATIVE CATEGORY CODE

Change to Attribute: Changed Description

This is recorded for [PATIENT ACTIVITY](#).

A [PATIENT](#) who is an [Overseas Visitor](#) does not qualify for free NHS healthcare and can choose to pay for NHS treatment or for private treatment. If they pay for NHS treatment then they should be recorded as NHS [PATIENTS](#).

The [PATIENT](#)'s [ADMINISTRATIVE CATEGORY CODE](#) may change during an episode or spell. For example, the [PATIENT](#) may opt to change from NHS to private health care. In this case, the start and end dates for each new [ADMINISTRATIVE CATEGORY PERIOD](#) (episode or spell) should be recorded.

If the [ADMINISTRATIVE CATEGORY CODE](#) changes during a [Hospital Provider Spell](#) the [ADMINISTRATIVE CATEGORY CODE \(ON ADMISSION\)](#) is used to derive the 'Category of [PATIENT](#)' for [Hospital Episode Statistics \(HES\)](#).

The category 'amenity [PATIENT](#)' is only applicable to [PATIENTS](#) using a [Hospital Bed](#).

National Codes:

- ~~01~~ NHS [PATIENT](#), including [Overseas Visitors](#) charged under the [National Health Service \(Charges to Overseas Visitors\) Regulations 1989 \(as amended by Statutory Instrument\)](#)
- 01 NHS [PATIENT](#), including [Overseas Visitors](#) charged under the [National Health Service \(Overseas Visitors Hospital Charging Regulations\)](#)
- 02 Private [PATIENT](#), one who uses accommodation or services authorised under the [National Health Service Act 2006](#)
- 03 Amenity [PATIENT](#), one who pays for the use of a single room or small ward in accordance with the [National Health Service Act 2006](#)
- 04 Category II [PATIENT](#), one for whom work is undertaken by hospital medical or dental staff within category II as defined in paragraph 37 of the Terms and Conditions of Service of Hospital Medical and Dental Staff.

COUNTRY RECIPROCAL STATUS (RETIRED)__ renamed from COUNTRY RECIPROCAL STATUS

Change to Attribute: Changed Name, status to Retired, Description

An indication of the nature of any reciprocal agreement between the UK and the overseas [COUNTRY](#). This item has been retired from the NHS Data Model and Dictionary.

Note: Iceland and Sweden are within the European Economic Area but there is also a reciprocal treatment arrangement for their residents who are not nationals of those countries. The last live version of this item is available in the November 2013 release of the NHS Data Model and Dictionary.

Classification: Access to this version can be obtained by emailing information.standards@hscic.gov.uk with "NHS Data Model and Dictionary - Archive Request" in the email subject line.

- a: Reciprocal agreement applying to residents irrespective of nationality
- b: Reciprocal agreement applying to nationals only (list A in the Patients Guide)
- c: European Social Charter signatory but no reciprocal agreement with the UK

COUNTRY RECIPROCAL STATUS (RETIRED)__ renamed from COUNTRY RECIPROCAL STATUS

Change to Attribute: Changed Name, status to Retired, Description

- Changed Name from Data_Dictionary.Attributes.C.Cou.COUNTRY_RECIPROCAL_STATUS to Retired.Data_Dictionary.Attributes.C.COUNTRY_RECIPROCAL_STATUS
- Retired COUNTRY RECIPROCAL STATUS
- Changed Description

EUROPEAN ECONOMIC AREA INDICATOR (RETIRED)__ renamed from EUROPEAN ECONOMIC AREA INDICATOR

Change to Attribute: Changed Name, status to Retired, Description

An indication of whether or not a [COUNTRY](#) is within the European Economic Area. The European Economic Area consists of the European union member states, plus Iceland, Liechtenstein and Norway. This item has been retired from the NHS Data Model and Dictionary.

Classification: The last live version of this item is available in the November 2013 release of the NHS Data Model and Dictionary.

- a: Yes
- b: No

Access to this version can be obtained by emailing information.standards@hscic.gov.uk with "NHS Data Model and Dictionary - Archive Request" in the email subject line.

EUROPEAN ECONOMIC AREA INDICATOR (RETIRED)__ renamed from EUROPEAN ECONOMIC AREA INDICATOR

Change to Attribute: Changed Name, status to Retired, Description

- Changed Name from Data_Dictionary.Attributes.E.End.EUROPEAN_ECONOMIC_AREA_INDICATOR to Retired.Data_Dictionary.Attributes.E.EUROPEAN_ECONOMIC_AREA_INDICATOR

- Retired EUROPEAN ECONOMIC AREA INDICATOR
- Changed Description

OVERSEAS VISITOR EXEMPT CATEGORY

Change to Attribute: Changed Description

This item is not used in a data set in the NHS Data Model and Dictionary. It has been retained as it is collected locally.

~~A classification indicating the circumstances in which [Overseas Visitors](#) are not liable to have to pay to use the National Health Service.~~ A category indicating the circumstances in which [Overseas Visitors](#) are not liable to have to pay to use the National Health Service.

~~Classification:~~ For further information and the categories, see the [NHS Choices website](#).

- ~~a: Anyone who at the time of treatment has been in the UK for the previous 12 months~~
- ~~b: Anyone who has come to the UK for the purpose of taking up permanent residence~~
- ~~c: Anyone who has come to the UK for the purpose of engaging in employment (whether as employed or self employed); this includes students and trainees whose course requires them to spend not less than 12 weeks in employment during their first year and unpaid workers with voluntary organisations providing certain services similar to those of health authorities and [Local Authority](#) Social Services departments.~~
- ~~d: Members of HM forces and other crown servants and British Council or Commonwealth War Graves Commission staff serving overseas, and others working overseas under arrangements sponsored by HM Government~~
- ~~e: People working overseas who have had at least 10 years continuous residence in the UK and have either:

 - ~~i: been working abroad for not more than 5 years, or~~
 - ~~ii: been taking home leave in the UK at least once every 2 years or have a contractual right to do so, or have a contractual right to the cost of their passage to the UK at the end of their agreement~~~~
- ~~f: Nationals of any of the European Economic Area (EEA)* countries who are resident in any of those countries and refugees and stateless persons and their dependants and survivors living in those countries regardless of their own nationality

 - ~~i: who require treatment the need for which arose during the visit to the U.K.~~
 - ~~ii: who are referred to the UK specifically for treatment with form E112 or E123~~~~
- ~~g: Residents and nationals of any country with which the UK has reciprocal agreements:

 - ~~i: who require treatment the need of which arose during the visit to the UK~~
 - ~~ii: who are referred to the UK for treatment under arrangements made by the appropriate authorities in those countries~~~~
- ~~h: Seamen on UK registered ships; offshore workers on the UK sector of the continental shelf

 - ~~i: UK war disabled pensioners and war widows~~~~
- ~~j: UK state pensioners living overseas (limited to treatment the need for which arose during the visit)~~
- ~~k: Refugees and others who have sought refuge in the UK

 - ~~i: Anyone detained by the immigration authorities~~
 - ~~ii: Anyone who is a prisoner**~~~~
- ~~m: Diplomatic staff at embassies and Commonwealth high commissions in London~~
- ~~n: EEA nationals working in another EEA member state but paying compulsory UK class I or class II National Insurance contributions~~
- ~~o: Nationals of countries which are signatories to the European Social Charter but with which the UK has no reciprocal agreement (limited to those nationals who are genuinely without resources to pay for medical assistance and the need for the treatment arose during the visit)~~
- ~~p: NATO service personnel (posted to the UK) not using their own or UK armed forces hospitals~~
- ~~q: Husbands or wives, and children (under the age of 16, or under the age of 19 if at school or college of further education) of any persons described in a. – p. above or in the Note *** below.~~

~~Note: * The European Economic Area consists of the European Community member states plus Iceland, Liechtenstein and Norway.~~

~~Note: ** For prisoners on remand this exemption applies until 12 months after arrival in the U.K. For convicted prisoners this exemption applies to until 12 months after arrival in the U.K., or 6 months after committal to prison by the courts, whichever is earlier~~

Note: *** A person living here for a settled purpose for not less than 6 months will be accepted as ordinary resident and therefore not liable to charges under the Regulations. A student enrolled in a course of study, the prescribed duration of which is not less than 6 months, is similarly entitled.

References:

The NHS Treatment of [Overseas Visitors](#), Manual of Guidance, 1988 Appendix M and subsequent updates

OVERSEAS VISITOR QUOTA NUMBER (RETIRED)_ renamed from OVERSEAS VISITOR QUOTA NUMBER

Change to Attribute: Changed Name, status to Retired, Description

The number of the referral within the agreed quota for authorised treatment of a [PATIENT](#) who is an [Overseas Visitor](#) from Malta, Anguilla, British Virgin Islands, Montserrat, Turks and Caicos and St. Helena. **This item has been retired from the NHS Data Model and Dictionary.**

Note: Further information on quotas can be found in chapter 7 of the [Department of Health](#) document "Implementing the overseas visitors hospital charging regulations", which can be found on the [Department of Health website](#).

The last live version of this item is available in the November 2013 release of the NHS Data Model and Dictionary.

Access to this version can be obtained by emailing information.standards@hscic.gov.uk with "NHS Data Model and Dictionary - Archive Request" in the email subject line.

OVERSEAS VISITOR QUOTA NUMBER (RETIRED)_ renamed from OVERSEAS VISITOR QUOTA NUMBER

Change to Attribute: Changed Name, status to Retired, Description

- Changed Name from Data_Dictionary.Attributes.O.Out.OVERSEAS_VISITOR_QUOTA_NUMBER to Retired.Data_Dictionary.Attributes.O.OVERSEAS_VISITOR_QUOTA_NUMBER
- Retired OVERSEAS VISITOR QUOTA NUMBER
- Changed Description

OVERSEAS VISITOR REFERRAL PRODUCED (RETIRED)_ renamed from OVERSEAS VISITOR REFERRAL PRODUCED

Change to Attribute: Changed Name, status to Retired, Description

An indication of whether the [Overseas Visitor](#) has produced an authorisation for treatment from their social security institution. **This item has been retired from the NHS Data Model and Dictionary.**

For visitors from European Economic Community countries, this will be a [S2](#) or [DA1](#). **The last live version of this item is available in the November 2013 release of the NHS Data Model and Dictionary.**

Classification: **Access to this version can be obtained by emailing information.standards@hscic.gov.uk with "NHS Data Model and Dictionary - Archive Request" in the email subject line.**

a: Yes

b. No

OVERSEAS VISITOR REFERRAL PRODUCED (RETIRED)_ renamed from OVERSEAS VISITOR REFERRAL PRODUCED

Change to Attribute: Changed Name, status to Retired, Description

- Changed Name from Data_Dictionary.Attributes.O.Out.OVERSEAS_VISITOR_REFERRAL_PRODUCED to Retired.Data_Dictionary.Attributes.O.OVERSEAS_VISITOR_REFERRAL_PRODUCED
- Retired OVERSEAS VISITOR REFERRAL PRODUCED
- Changed Description

OVERSEAS VISITOR TREATMENT PREARRANGED (RETIRED)_ renamed from OVERSEAS VISITOR TREATMENT PREARRANGED

Change to Attribute: Changed Name, status to Retired, Description

An indication of whether or not treatment was prearranged by an appropriate referring [COUNTRY](#) authority. **This item has been retired from the NHS Data Model and Dictionary.**

Classification: **The last live version of this item is available in the November 2013 release of the NHS Data Model and Dictionary.**

a. Yes
b. No

Access to this version can be obtained by emailing information.standards@hscic.gov.uk with "NHS Data Model and Dictionary - Archive Request" in the email subject line.

OVERSEAS VISITOR TREATMENT PREARRANGED (RETIRED)_ renamed from OVERSEAS VISITOR TREATMENT PREARRANGED

Change to Attribute: Changed Name, status to Retired, Description

- Changed Name from Data_Dictionary.Attributes.O.Out.OVERSEAS_VISITOR_TREATMENT_PREARRANGED to Retired.Data_Dictionary.Attributes.O.OVERSEAS_VISITOR_TREATMENT_PREARRANGED
- Retired OVERSEAS VISITOR TREATMENT PREARRANGED
- Changed Description

OVERSEAS VISITOR UK ARRIVAL DATE

Change to Attribute: Changed Description

This item is not used in a data set in the NHS Data Model and Dictionary. It has been retained as it is collected locally.

The date that a [PATIENT](#) being treated as an [Overseas Visitor](#) last arrived in the United Kingdom.

REQUEST CATEGORY (RETIRED)_ renamed from REQUEST CATEGORY

Change to Attribute: Changed Name, status to Retired, Description

A classification of [DIAGNOSTIC TEST REQUEST](#) including the category of [PATIENT](#) (NHS or private) and the type of location from which the request was sent. This item has been retired from the NHS Data Model and Dictionary.

Classification: The last live version of this item is available in the November 2013 release of the NHS Data Model and Dictionary.

- a: Request in respect of a NHS [PATIENT](#), including amenity [PATIENTS](#) and [Overseas Visitors](#) charged under the [National Health Service \(Charges to Overseas Visitors\) Regulations 1989 \(as amended by Statutory Instrument\)](#)
 - i: from NHS facilities of another provider
 - ii: being treated in a non-NHS institution
 - iii: being treated in other than i or ii
- b: Request in respect of a private [PATIENT](#) using accommodation or services authorised under the [National Health Service Act 2006](#)
- c: Request in respect of a private [PATIENT](#) in a non-NHS institution under a contractual arrangement when a [Primary Care Trust](#) or [NHS Trust](#) is providing a service to the institution in accord with the [National Health Service Act 2006](#)
- d: Category II request; those received as a result of work undertaken by hospital doctors within the scope of category II of the Schedule to paragraph 37 of the Terms and Conditions of Hospital Medical and Dental Staff. For example, requests may arise from examinations and reports on prospective emigrants for insurance and legal purposes and on behalf of the Employment Medical Advisory Service
- e: Request in respect of other human sources:
 - i: from a NHS facility or
 - ii: from a non-NHS institution under a contractual arrangement as specified at (c)
- f: Request in respect of a non-human source from any non-NHS [ORGANISATION](#)
- g: Request in respect of a non-human source from a NHS [ORGANISATION](#)

Access to this version can be obtained by emailing information.standards@hscic.gov.uk with "NHS Data Model and Dictionary - Archive Request" in the email subject line.

REQUEST CATEGORY (RETIRED)_ renamed from REQUEST CATEGORY

Change to Attribute: Changed Name, status to Retired, Description

- Changed Name from `Data_Dictionary.Attributes.R.Rep.REQUEST_CATEGORY` to `Retired.Data_Dictionary.Attributes.R.REQUEST_CATEGORY`
- Retired REQUEST CATEGORY
- Changed Description

ADMINISTRATIVE CATEGORY CODE

Change to Data Element: Changed Description

Format/Length:	an2
HES Item:	ADMINCAT
National Codes:	See ADMINISTRATIVE CATEGORY CODE
Default Codes:	98 - Not applicable 99 - Not known: a validation error

Notes:

[ADMINISTRATIVE CATEGORY CODE](#) is the same as [ADMINISTRATIVE CATEGORY CODE](#).

Note: for the [National Joint Registry Data Set](#), the default codes are not applicable and the permitted values are:

- ~~01 'NHS PATIENT, including Overseas Visitors charged under the National Health Service (Charges to Overseas Visitors) Regulations 1989 (as amended by Statutory Instrument)' and~~
- 01 'NHS PATIENT, including Overseas Visitors charged under the National Health Service (Overseas Visitors Hospital Charging Regulations)' and
- 02 'Private PATIENT, one who uses accommodation or services authorised under the National Health Service Act 2006.

ADMINISTRATIVE CATEGORY CODE replaces **ADMINISTRATIVE CATEGORY** and should be used for all new and developing data sets and for XML messages.

DEFERRED ADMISSIONS (ORDINARY)

Change to Data Element: Changed Description

Format/length:	n10
HES item:	
Format/Length:	n10
HES Item:	
National Codes:	
Default Codes:	

Notes:

The total number of PATIENTS classified as booked admissions or WAITING LIST admissions, who have an OFFER OF ADMISSION MADE DATE recorded before or on the REPORTING PERIOD END DATE and are still waiting to be admitted from an ELECTIVE ADMISSION LIST to a Hospital Provider Spell for the specified PATIENT CLASSIFICATION of 'ordinary admission' due to Self-Deferred Admission.

DEFERRED ADMISSIONS (ORDINARY) is the total number of PATIENTS classified as booked admissions or WAITING LIST admissions, who have an OFFER OF ADMISSION MADE DATE recorded before or on the REPORTING PERIOD END DATE and are still waiting to be admitted from an ELECTIVE ADMISSION LIST to a Hospital Provider Spell for the specified PATIENT CLASSIFICATION of 'Ordinary admission' due to Self-Deferred Admission.

This includes Self-Deferred Admission PATIENTS where the OFFERED FOR ADMISSION DATE has passed by the end of the REPORTING PERIOD.

It excludes Self-Deferred Admission PATIENTS where the OFFERED FOR ADMISSION DATE has not passed by the end of the REPORTING PERIOD, private PATIENTS, PATIENTS who are Overseas Visitors, elective planned admissions and Suspended Patients.

It is the total of number of Self-Deferred Admission PATIENTS with an OFFERED FOR ADMISSION DATE still waiting admission where:

- no ELECTIVE ADMISSION LIST REMOVAL REASON and ELECTIVE ADMISSION LIST REMOVAL DATE is recorded i.e. the PATIENT is still waiting for admission on the WAITING LIST
or
if recorded, ELECTIVE ADMISSION LIST REMOVAL DATE is after the REPORTING PERIOD END DATE i.e. the PATIENT was waiting for admission on the WAITING LIST as at the end of the REPORTING PERIOD and should therefore be included in the count

and

- an OFFERED FOR ADMISSION DATE of an OFFER OF ADMISSION is recorded where the OFFER OF ADMISSION MADE DATE is before or on the REPORTING PERIOD END DATE
Where more than one OFFER OF ADMISSION is recorded due to PATIENT Self-Deferred Admission, at least one should have an OFFERED FOR ADMISSION DATE before or on the REPORTING PERIOD END DATE even if it is not the latest offer made

and

the latest [OFFER OF ADMISSION](#) made, the one with the latest [OFFER OF ADMISSION MADE DATE](#), is before or on the [REPORTING PERIOD END DATE](#) i.e exclude from the count if the latest offer was made after the end of the [REPORTING PERIOD](#)

and

c. no [ELECTIVE ADMISSION SUSPENSION DETAIL](#) has been recorded

or

if recorded, the [LIST SUSPENSION START DATE](#) is before the [REPORTING PERIOD END DATE](#) and the [LIST SUSPENSION END DATE](#) is before the [REPORTING PERIOD END DATE](#) i.e. no period of suspension is still on-going as at the end of the [REPORTING PERIOD](#).

Where no [LIST SUSPENSION END DATE](#) has been recorded or where the [LIST SUSPENSION END DATE](#) is on or after the [REPORTING PERIOD END DATE](#) then the period of suspension is still active and the [PATIENT](#) should be excluded from the count

and

~~d. the [ADMINISTRATIVE CATEGORY CODE](#) of the [ADMINISTRATIVE CATEGORY](#) for the [ELECTIVE ADMISSION LIST ENTRY](#) is National Code 01 'NHS PATIENT, including Overseas Visitors charged under the National Health Service (Charges to Overseas Visitors) Regulations 1989 (as amended by Statutory Instrument)'~~

d. [ADMINISTRATIVE CATEGORY CODE](#) of the [ADMINISTRATIVE CATEGORY](#) for the [ELECTIVE ADMISSION LIST ENTRY](#) is National Code 'NHS PATIENT, including Overseas Visitors charged under the National Health Service (Overseas Visitors Hospital Charging Regulations)'

and

no [OVERSEAS VISITOR STATUS](#) is recorded for the [ELECTIVE ADMISSION LIST ENTRY](#)

and

e. the [ELECTIVE ADMISSION EFFECTIVE WAIT START DATE](#) is different to the [ORIGINAL DECIDED TO ADMIT DATE](#)

and

the [ELECTIVE ADMISSION EFFECTIVE WAIT START DATE](#) is before or on the [REPORTING PERIOD END DATE](#)

and

f. the [ELECTIVE ADMISSION TYPE](#) is National Code 11 'Waiting list admission' or 12 'Booked admission'

and

g. the [PATIENT CLASSIFICATION](#) is National Code 1 'Ordinary admission'

Where no Self-Deferred Admission [PATIENTS](#) waiting for admissions match the above criteria, a zero value should be recorded.

OVERSEAS VISITOR STATUS CLASSIFICATION

Change to Data Element: Changed Description

Format/Length:	an1
HES Item:	
National Codes:	See OVERSEAS VISITOR STATUS CLASSIFICATION
Default Codes:	8 - Not applicable (not an Overseas Visitor) 9 - Charging rate not known

Notes:

[OVERSEAS VISITOR STATUS CLASSIFICATION](#) is the same as attribute [OVERSEAS VISITOR STATUS CLASSIFICATION](#).

Healthcare for [PATIENTS](#) who are [Overseas Visitors](#) should be reported to the [Department for Work and Pensions Overseas Healthcare Team](#) via the [Overseas Visitor Treatment Portal](#). This enables the [Department of Health](#) and ultimately the NHS to be reimbursed for the cost of treatments of [Overseas Visitors](#) from the [European Economic Area \(EEA\)](#) and Switzerland under European Union regulations.

The [OVERSEAS VISITOR STATUS](#) may change while the [PATIENT](#) is being treated. All such changes should be recorded so that charges for treatment can be revised accordingly.

OVERSEAS VISITOR STATUS CLASSIFICATION AT CDS ACTIVITY DATE

Change to Data Element: Changed Description

Format/Length:	an1
HES Item:	
National Codes:	See OVERSEAS VISITOR STATUS CLASSIFICATION
Default Codes:	8 - Not applicable (not an Overseas Visitor) 9 - Charging rate not known

Notes:

[OVERSEAS VISITOR STATUS CLASSIFICATION AT CDS ACTIVITY DATE](#) is the same as attribute [OVERSEAS VISITOR STATUS CLASSIFICATION](#), recorded at the [CDS ACTIVITY DATE](#).

Healthcare for [PATIENTS](#) who are [Overseas Visitors](#) should be reported to the [Department for Work and Pensions Overseas Healthcare Team](#) via the [Overseas Visitor Treatment Portal](#). This enables the [Department of Health](#) and ultimately the NHS to be reimbursed for the cost of treatments of [Overseas Visitors](#) from the [European Economic Area \(EEA\)](#) and Switzerland under European Union regulations.

The [OVERSEAS VISITOR STATUS](#) may change while the [PATIENT](#) is being treated. All such changes should be recorded so that charges for treatment can be revised accordingly.

PATIENTS SUSPENDED (ORDINARY)

Change to Data Element: Changed Description

Format/length:	n10
HES item:	
Format/Length:	n10
HES Item:	
National Codes:	
Default Codes:	

Notes:

The total number of [PATIENTS](#) classified as booked admissions or [WAITING LIST](#) admissions, who are still waiting to be admitted from an [ELECTIVE ADMISSION LIST](#) to a [Hospital Provider Spell](#) for the specified [PATIENT CLASSIFICATION](#) of 'Ordinary Admission' who at the [REPORTING PERIOD END DATE](#) are [Suspended Patients](#).

[PATIENTS SUSPENDED \(ORDINARY\)](#) is the total number of [PATIENTS](#) classified as booked admissions or [WAITING LIST](#) admissions, who are still waiting to be admitted from an [ELECTIVE ADMISSION LIST](#) to a [Hospital Provider Spell](#) for the specified [PATIENT CLASSIFICATION](#) of 'Ordinary Admission' who at the [REPORTING PERIOD END DATE](#) are [Suspended Patients](#).

It excludes private [PATIENTS](#), [PATIENTS](#) who are [Overseas Visitors](#) and elective planned admissions.

It is the total of number of [Suspended Patients](#) on the [ELECTIVE ADMISSION LIST](#) where:

- a. no [ELECTIVE ADMISSION LIST REMOVAL REASON](#) and [ELECTIVE ADMISSION LIST REMOVAL DATE](#) is recorded i.e. the [PATIENT](#) is still waiting for admission on the [WAITING LIST](#)

or

if recorded, [ELECTIVE ADMISSION LIST REMOVAL DATE](#) is after the [REPORTING PERIOD END DATE](#) i.e. the [PATIENT](#) was waiting for admission on the [WAITING LIST](#) as at the end of the [REPORTING PERIOD](#) and should therefore be included in the count

and

- b. an [ELECTIVE ADMISSION SUSPENSION DETAIL](#) is recorded where the [LIST SUSPENSION START DATE](#) is before or on the [REPORTING PERIOD END DATE](#)

and

the [LIST SUSPENSION END DATE](#) is on or after the [REPORTING PERIOD END DATE](#)

or

no [LIST SUSPENSION END DATE](#) is recorded i.e. it is still active and on-going

and

- e. the [ADMINISTRATIVE CATEGORY CODE](#) of the [ADMINISTRATIVE CATEGORY](#) for the [ELECTIVE ADMISSION LIST ENTRY](#) is National Code 01 '[NHS PATIENT, including Overseas Visitors charged under the National Health Service \(Charges to Overseas Visitors\) Regulations 1989 \(as amended by Statutory Instrument\)](#)'

- c. the [ADMINISTRATIVE CATEGORY CODE](#) of the [ADMINISTRATIVE CATEGORY](#) for the [ELECTIVE ADMISSION LIST ENTRY](#) is National Code '[NHS PATIENT, including Overseas Visitors charged under the National Health Service \(Overseas Visitors Hospital Charging Regulations\)](#)'

and

no [OVERSEAS VISITOR STATUS](#) is recorded for the [ELECTIVE ADMISSION LIST ENTRY](#)

and

- d. the [ELECTIVE ADMISSION TYPE](#) is National Code 11 '[Waiting list admission](#)' or 12 '[Booked admission](#)'

and

- e. [PATIENT CLASSIFICATION](#) is 'Ordinary Admission'

PATIENTS WAITING FOR ADMISSION

Change to Data Element: Changed Description

Format/length:	n10
HES item:	
Format/Length:	n10
HES Item:	
National Codes:	
Default Codes:	

Notes:

The number of [PATIENTS](#) classified as booked admissions or [WAITING LIST](#) admissions, who are waiting to be admitted from an [ELECTIVE ADMISSION LIST](#) to a [Hospital Provider Spell](#) for the specified [WAITING FOR ADMISSION INTENDED MANAGEMENT](#) on the [REPORTING PERIOD END DATE](#).

[PATIENTS WAITING FOR ADMISSION](#) is the number of [PATIENTS](#) classified as booked admissions or [WAITING LIST](#) admissions, who are waiting to be admitted from an [ELECTIVE ADMISSION LIST](#) to a [Hospital Provider Spell](#) for the specified [WAITING FOR ADMISSION INTENDED MANAGEMENT](#) on the [REPORTING PERIOD END DATE](#).

This includes [PATIENTS](#) with an [OFFER OF ADMISSION MADE DATE](#) recorded before or on the [REPORTING PERIOD END DATE](#).

[PATIENTS WAITING FOR ADMISSION](#) will be further categorised by [MAIN SPECIALTY CODE](#) of the [ELECTIVE ADMISSION LIST](#) or [ADMISSION INTENDED PROCEDURE](#).

This includes [Self-Deferred Admission PATIENTS](#) where a further [OFFERED FOR ADMISSION DATE](#) has been made on or before the end of the [REPORTING PERIOD](#).

It excludes [Self-Deferred Admission PATIENTS](#) where no further [OFFERED FOR ADMISSION DATE](#) has been made as at the end of the [REPORTING PERIOD](#), private [PATIENTS](#), [PATIENTS](#) who are [Overseas Visitors](#), elective planned admissions and [Suspended Patients](#).

It is the total of number of [PATIENTS](#) waiting [Elective Admission](#) where:

- a. no [ELECTIVE ADMISSION LIST REMOVAL REASON](#) and [ELECTIVE ADMISSION LIST REMOVAL DATE](#) is recorded i.e. the [PATIENT](#) is still waiting for admission on the [WAITING LIST](#)

or

if recorded, [ELECTIVE ADMISSION LIST REMOVAL DATE](#) is after the [REPORTING PERIOD END DATE](#) i.e. the [PATIENTS](#) was waiting for admission on the [WAITING LIST](#) as at the end of the [REPORTING PERIOD](#) and should therefore be included in the count

and

- b. an [OFFERED FOR ADMISSION DATE](#) of an [OFFER OF ADMISSION](#) is recorded where the [OFFER OF ADMISSION MADE DATE](#) is before or on the [REPORTING PERIOD END DATE](#)

Where more than one [OFFER OF ADMISSION](#) is recorded (due to [Self-Deferred Admission](#)), at least one should have an [OFFER OF ADMISSION MADE DATE](#) before or on the [REPORTING PERIOD END DATE](#) and the latest [OFFER OF ADMISSION MADE DATE](#) is before or on the [REPORTING PERIOD END DATE](#) i.e. exclude from the count if the latest offer was made after the end of the [REPORTING PERIOD](#)

and

- c. ~~the [ADMINISTRATIVE CATEGORY CODE](#) of the [ADMINISTRATIVE CATEGORY](#) for the [ELECTIVE ADMISSION LIST ENTRY](#) is National Code 01 *NHS PATIENT, including Overseas Visitors charged under the National Health Service (Charges to Overseas Visitors) Regulations 1989 (as amended by Statutory Instrument)*~~

- c. the [ADMINISTRATIVE CATEGORY CODE](#) of the [ADMINISTRATIVE CATEGORY](#) for the [ELECTIVE ADMISSION LIST ENTRY](#) is National Code *'NHS PATIENT, including Overseas Visitors charged under the National Health Service (Overseas Visitors Hospital Charging Regulations)'*

and

no [OVERSEAS VISITOR STATUS](#) is recorded for the [ELECTIVE ADMISSION LIST ENTRY](#)

and

- d. no [ELECTIVE ADMISSION SUSPENSION DETAIL](#) has been recorded

or

if recorded, the [LIST SUSPENSION START DATE](#) is before the [REPORTING PERIOD END DATE](#) and the [LIST SUSPENSION END DATE](#) is before the [REPORTING PERIOD END DATE](#) i.e. no period of suspension is still on-going as at the end of the [REPORTING PERIOD](#).

Where no [LIST SUSPENSION END DATE](#) has been recorded or where the [LIST SUSPENSION END DATE](#) is on or after the [REPORTING PERIOD END DATE](#) then the period of suspension is still active and the [PATIENT](#) should be excluded from the count

and

- e. the [ELECTIVE ADMISSION TYPE](#) is National Code 11 *'Waiting list admission'* or 12 *'Booked admission'*

~~[Hospital Provider Spell](#) is an [ACTIVITY GROUP](#) where [ACTIVITY GROUP TYPE](#) is National Code 21 *'Hospital Provider Spell'*~~

For enquiries about this Change Request, please email information.standards@hscic.gov.uk